

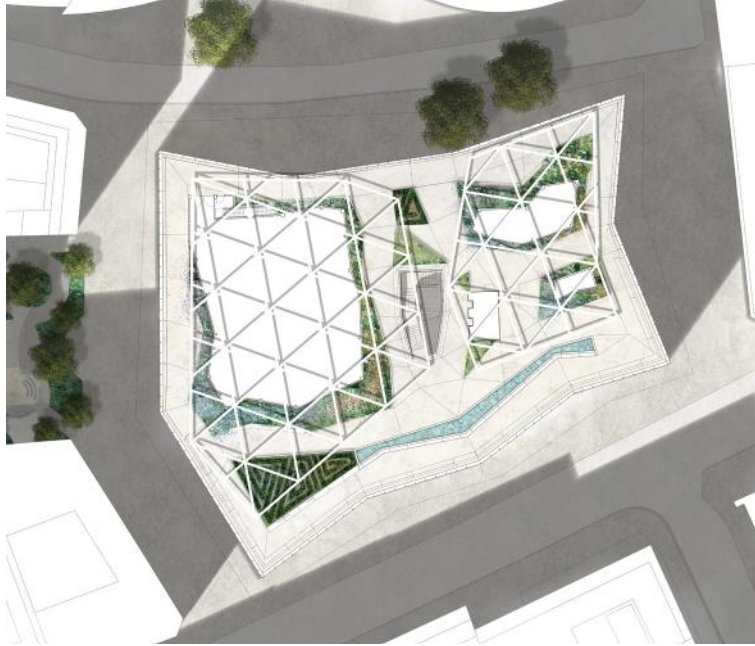
A photograph of a modern rooftop garden. The foreground is filled with lush green plants. In the middle ground, two women are sitting on a bench, engaged in conversation. The background features a complex blue steel structure that forms a canopy over the garden. The sky is clear and blue. A semi-transparent white box with the letters 'LUC' in a bold, sans-serif font is overlaid in the center of the image.

LUC

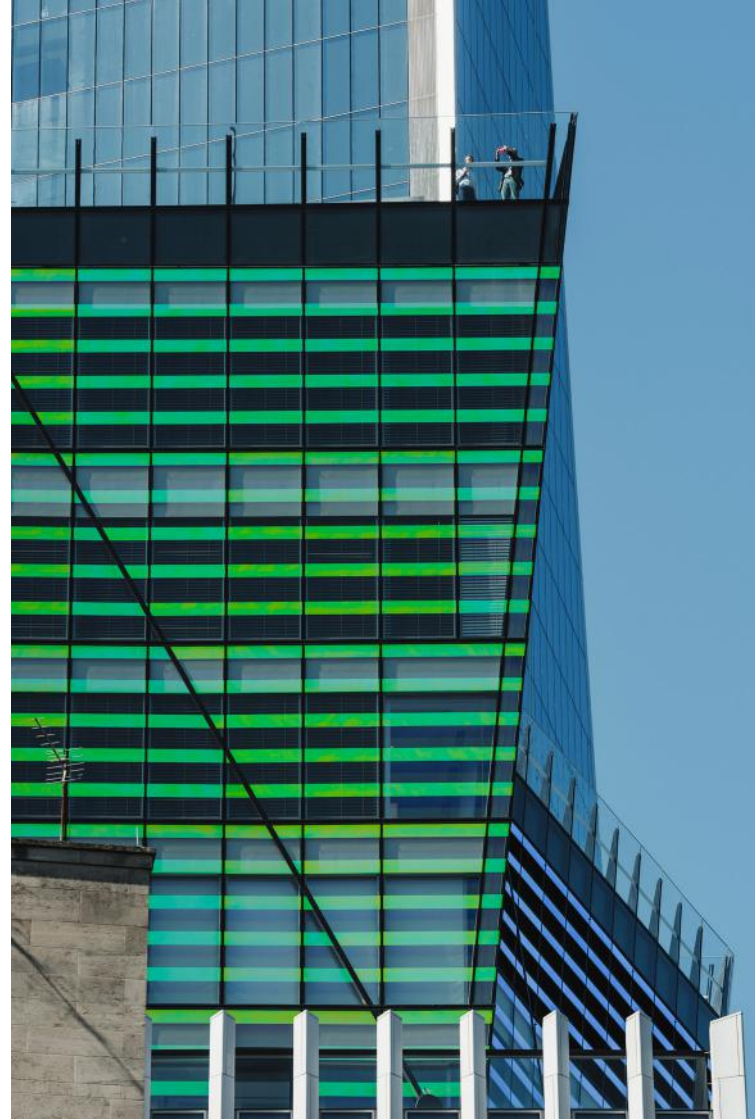
The Garden at 120, Fenchurch Street

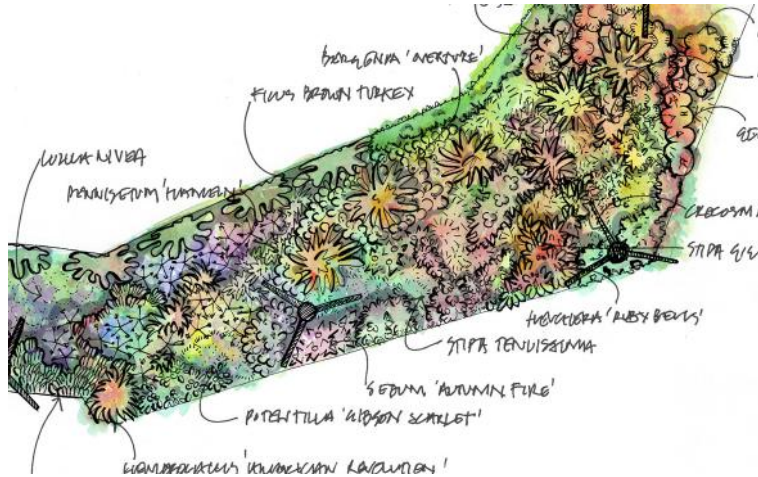


15 storeys up.. meet the #gardenat120.. it's absolutely beautiful from every corner & boasts some fantastic views of @cityoflondon..



The Garden at 120 is a publicly accessible green oasis on top of a new 15-storey office building in the heart of the City of London. Away from the hustle and bustle at ground floor, the 2,200sqm roof garden provides a unique vantage point for office workers and the public to enjoy tranquil views of London, as well as the chance to appreciate the sight, scent and sound of its plants and water feature.





Working in collaboration with Eric Parry Architects and German landscape architects Latz+Partner, LUC was chosen by Saxon Generali Real Estate to develop the detailed design and oversee the implementation of the soft landscape element of the scheme.

We provided planning and planting advice, soil and irrigation design and specification, plus pre-selection of plant stock, setting out and inspection.

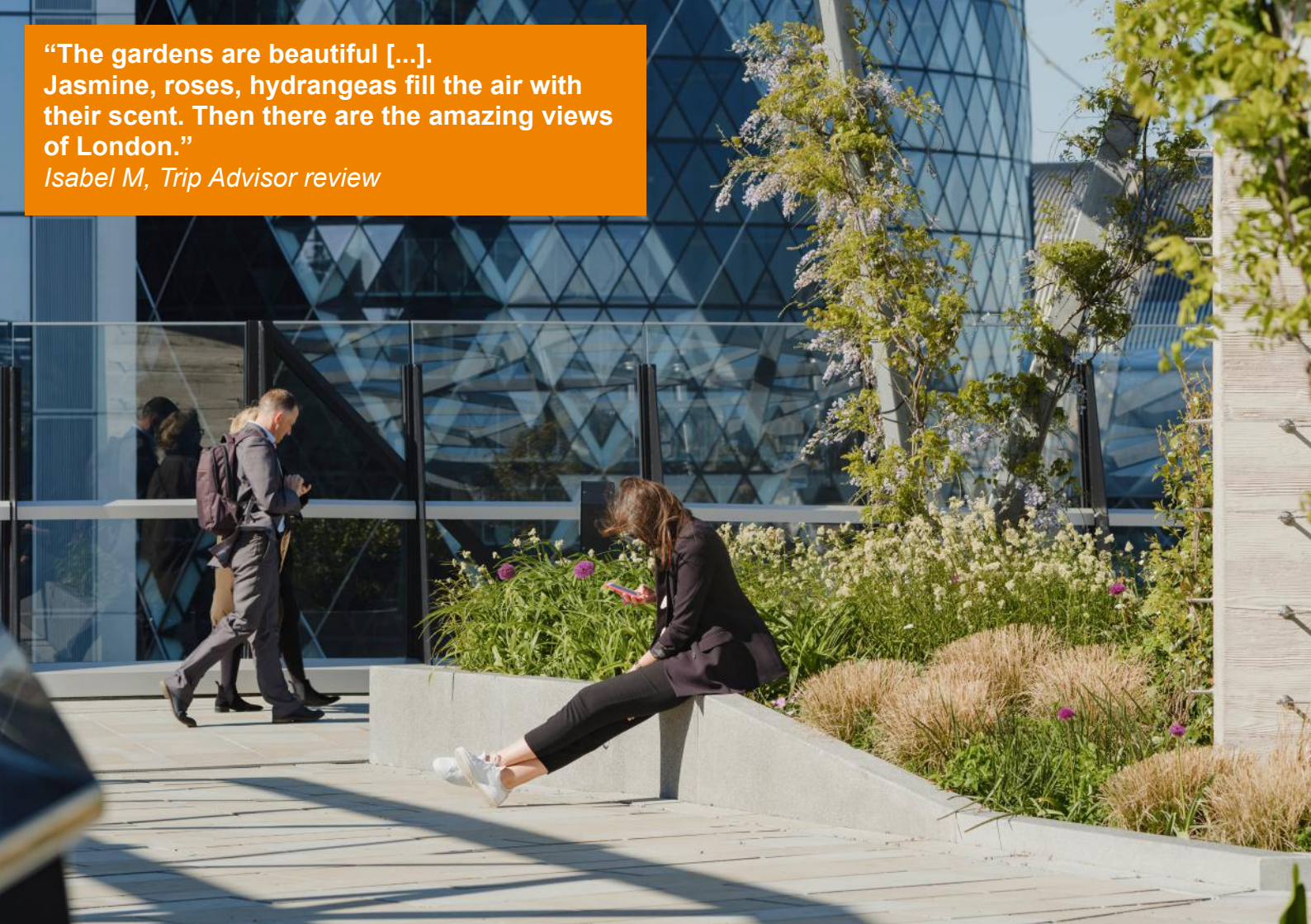


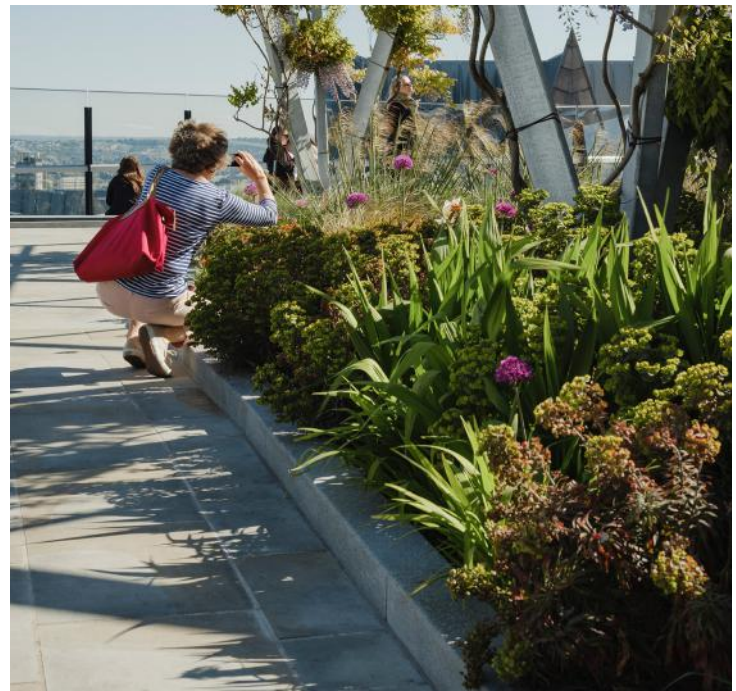
“It’s gone beyond our expectations, simply because it has a wow factor that we were hoping for, but we didn’t dare dream of.”

Tina Paillet, Senior executive, Generali Real Estate

**“The gardens are beautiful [...].
Jasmine, roses, hydrangeas fill the air with
their scent. Then there are the amazing views
of London.”**

Isabel M, Trip Advisor review





Our planting scheme combines robust herbaceous planting with evergreen grasses, bulbs, vines and espalier fruit that deliver interest throughout the year.

Its centrepiece is a grove of 88 wisteria supported on a steel pergola, providing shade, scent and shelter to the roof terrace.



“It’s an ocean of tranquility above the hubbub of city life. Take your lunch and enjoy it up there; it’s a very pretty and well tended garden with plenty of places to sit and while away a few moments.”

Amanda, Trip Advisor review

The Garden at 120 is an environmentally sensitive project: It achieves benefits through water conservation and an increase in the site's ecological value and it is designed to BREEAM Excellent rating. The soft landscaping scheme presents a mix of plants that provide interest all year round and create nesting and foraging opportunities for a number of species.

The scheme also involved a large element of innovation as it had to integrate building services and energy efficiency requirements. Additionally providing the Wisteria plants with the soil volume they will need to thrive required designing bespoke technological solutions to marry horticultural and structural considerations.



The logo consists of the letters 'LUC' in a bold, white, sans-serif font, centered within a solid black square. The background of the entire image is a close-up of tall, golden-brown grasses with long, thin seed heads, set against a blurred background of green foliage and a blue sky.

LUC

landuse.co.uk

