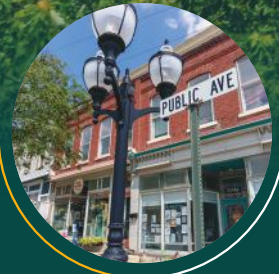





# SUSQ<sup>2024</sup> CO

*visitors guide*



*find your way* [visitsusqco.com](https://visitsusqco.com)   

**KOST**  
TIRE & AUTO SERVICE



**KostTirePA.com**

*Family Owned  
and Operated*



**Montrose**

555 Grow Ave.

**570-278-4557**

**Forest City**

246 S. Main Street

**570-785-3171**

**33 Store Locations  
to Serve you!**

**KOST**  
TIRE & AUTO SERVICE

**Big e Tire**  
& Auto Service

# Montrose Precious Metals

Estate &  
Custom  
Jewelry  
Jewelry  
Repair  
Services  
Design  
Service  
Investment  
Gold or  
Silver



Turn your  
Gold, Silver  
and Coins  
into Cash!

Call Paul at  
607-728-7333  
for questions  
or estimates!

170 Church Street, Montrose, PA 18801

Tues - Thurs, 10 am-5 pm & Sat., 10 am-2 pm

Call for Appointments!

## A MODERN LUXURY GETAWAY IN A TIMELESS NATURAL BEAUTY

And we are dog friendly! 🐕

The four cabins at Camp Bluestone offer a luxurious escape like no other. Rent a cabin for a romantic weekend or mid-week solo escape, or rent all four with family and friends.

A vacation & event rental venue  
designed as a place for folks to gather

Vacation rentals | Weddings | Retreats | Event space

### THE BARN

1200 sq. ft.  
Inviting feel  
Natural sun  
Subtle lighting  
Intimate  
Up to 100 guests

### THE PAVILION

850 sq. ft.  
Open air  
String lighting  
Farmhouse tables  
Lounge seating  
Up to 85 guests

1290 Stalker Hill Rd, Thompson, PA 18465  
609.709.7117 | [campbluestonevenue.com](http://campbluestonevenue.com)



2024

# visitors guide

**4** Celebrating  
History at  
The Dennis Farm

**12** Wineries &  
Breweries

**6** History &  
Heritage

**16** Outdoor  
Adventures

**8** Arts &  
Culture

**22** 2024  
Events

**10** Perk Up

**26** Connect at  
Camp Bluestone

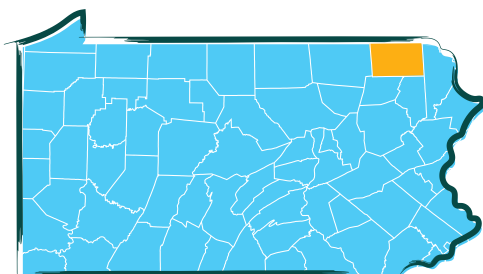


# A LITTLE #SUSQCO FOR EVERYONE!

With charming villages surrounded by rolling hills, and amazing outdoor recreation opportunities, Susquehanna County is the place in northeastern Pennsylvania to play, stay, relax, and rejuvenate.

Paddle down the North Branch of the Susquehanna River. Hike the waterfalls at Salt Springs State Park. Ski and snowboard at Elk Mountain. Experience nature and history along the Rail Trail. Take a self-guided walking tour of the Montrose Historic District and shop unique downtown boutiques and art galleries. Explore the railroad heritage and renaissance of Susquehanna Depot and Forest City.

**Through every season, you'll find something to love in Susquehanna County.**



Find the most current information and events at [visitsusqco.com](https://visitsusqco.com)



# *The* DENNIS *farm*

***America's history told through an  
African American family farm***

The story of the Dennis family is the quintessential American story—predating and encompassing the Revolutionary War and continuing to the present. But it is also a personal story, as told by Denise Dennis, President and CEO of the Dennis Farm Charitable Land Trust.

"It is a belief in the American dream at a time when the American dream was not designed with African Americans in mind," Denise Dennis said at the 2015 annual Dennis Farm Symposium held each October. Guided tours of the historic property are provided to attendees following the symposium. The Dennis family story began in New England and the family's path led to Susquehanna County and to the Perkins-Dennis farm on Creek Road in Brooklyn Township. The property was settled in 1793 by Prince Perkins, a free African-American Revolutionary War veteran. The property has remained in the family for over 200 years. Prince Perkins' daughter, Angeline, and her husband, Henry Dennis, expanded the farm acreage.

Archaeologist and Dennis Farm Charitable Land Trust board member Wade Catts said the family farm located in rural northeastern Pennsylvania created a powerful and nuanced story complete with documentation, photographs and oral histories, as well as artifacts and architecture on the property.

There are plans to renovate the house at the site, which was originally built in the second quarter of the 19th century, Catts

said. Family photos will be used to help with the renovation project. Over 10,000 artifacts, including the ruins of outbuildings, were unearthed on the property in 2008-09 by Binghamton University archeologists who worked at the site. There are also 40-50 burials in the African American cemetery on the property. Catts believes it was the only African American cemetery in Susquehanna County.

In 2014, the Dennis Farm was listed on the National Register of Historic Places, recognized as being nationally significant. Artifacts from the Dennis Farm are on exhibit at the Smithsonian Institute's National Museum of African American History & Culture, as well as at the Museum of the American Revolution in Philadelphia.

America250PA dedicated the Commonwealth's first Semiquincentennial Bell at Dennis Farm in 2023. The bell—one of 7 planned to be installed in the state—is a replica of the Liberty Bell, and is inscribed with the words "When the nation was young, our free African American ancestors owned and farmed this beautiful place against great odds."



Educational & Cultural  
Site Brooklyn Township



Schedule a guided tour, call The Dennis Farm  
at Keystone College: 570-945-8150



Dennis Farm Charitable Land  
Trust [thedennisfarm.org](http://thedennisfarm.org)

# HISTORY and HERITAGE



## SUSQUEHANNA COUNTY HISTORICAL SOCIETY & MUSEUM

18 Monument Square, Montrose, PA  
570.278.1622

[susqcohistosoc.org](http://susqcohistosoc.org)

Monday – Thursday: 9 a.m. – 5 p.m.  
Saturday: 10 a.m. – 2 p.m.  
during Third Weekend in Montrose

*Reservations recommended for museum tours.*

The museum is free to the public. Items of note include spinning wheels built by the Crandall Toy Factory, paintings by Susan C. Moore Waters (1823-1900), exhibits that feature the county's economic past, and rooms dedicated to early local historian Emily Blackman and the United States military, including a phenomenal Civil War collection. The Historical Society also houses a Genealogy and Research Department.

## THE MONTROSE HISTORICAL DISTRICT

Encompasses 386 buildings, 2 sites in the central business district. The Courthouse Complex, Sylvanus Mulford House, and Silver Lake Bank are also listed on the National Register of Historic Places. Self-guided walking tours.

## OLD MILL VILLAGE MUSEUM

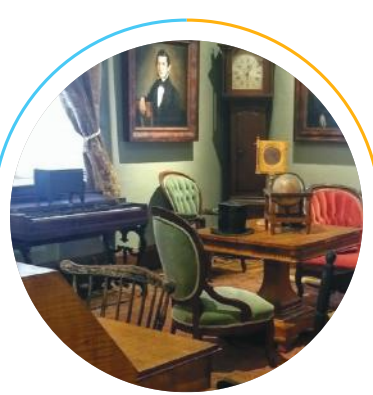
5774 PA-848, New Milford, PA  
[oldmillvillage.org](http://oldmillvillage.org)

Living history museum with special events and themed weekend activities during the spring, summer and autumn months that bring different aspects of our history and heritage alive.

## pennsylvania fun fact

**IN 1856, SAMUEL BRUSH SHOT A PANTHER**—also known as a mountain lion—in the New Milford-Oakland township area. The panther mount made its way to Penn State University where it was displayed in Old Main as a symbol of wildlife preservation and inspired the school's mascot—the Nittany Lion. It was loaned to Chicago for the World's Fair, then to Pittsburgh's Carnegie Museum display of endangered species. The mount returned to the campus in the 1990s and now resides in the Penn State All-Sports Museum.





## MARTIN'S CREEK

### Viaduct, Kingsley

This concrete railroad bridge is considered an engineering triumph constructed 1912-14 for the Delaware, Lackawanna and Western Railroad Company. The Viaduct crosses over US-11. It pre-dates its sibling, the larger Tunkhannock Viaduct, which can also be viewed on US-11. The Martin's Creek Viaduct stands 150-feet tall with seven main arches. A scenic overlook on Zicks Hill Road in Kingsley provides a panoramic view.

## PRIESTHOOD RESTORATION SITE

27832 SR 171, Susquehanna

Oakland Twp.

570.335.9580

[churchofjesuschrist.org](http://churchofjesuschrist.org)

Monday – Saturday: 10 a.m. – 5 p.m.

Sunday: 1 p.m. – 5 p.m.

Marks the place where the Church of Jesus Christ of Latter-Day Saints founder Joseph Smith resided with his wife, Emma (Hale) Smith in 1828-29. The Church recognizes the site as the place where Joseph Smith translated most of the Book of Mormon. The visitors' center features a film, artifacts and interactive exhibits. Guided tours are available of the reconstructed homes and self-guided tours of the remaining areas.

## STARRUCCA VIADUCT

### Lanesboro

Constructed in 1848 by the New York and Erie Railroads using local Pennsylvania Bluestone. This stone arch bridge columns rise 110-feet above the Starrucca Creek and its 17 arches are each 50 feet. The bridge has been used continually for over 175 years. The viaduct was designated as a National Historic Civil Engineering Landmark in 1973 and listed on the National Register of Historic Places in 1975.

## THE FOREST CITY AREA HISTORICAL SOCIETY & MUSEUM

[forestcityareahistoricalsociety.org](http://forestcityareahistoricalsociety.org)

Calls a former Methodist Church home and showcases the immigrant history that settled in the area in the early 1900s to work in the Anthracite Coal industry. The FCAHS also hosts special performances and events throughout the year.

## CLIFFORD HISTORICAL SOCIETY & MUSEUM

[cliffordtownshiphistoricalsociety.org](http://cliffordtownshiphistoricalsociety.org)

Presents guided tours of three venues on the third Sunday of each month, May through October, 1-4 p.m. Take a tour of the Baptist Church which dates back to 1817, Museum of Local History, and a renovated one-room schoolhouse, the Hoover School. Visit the Children's Garden, where kids can safely explore, located next to the Clifford Community Park, 119 Cemetery Street, Clifford.

# ARTS *and* CULTURE



## CHURCH STREET MARKETPLACE

158 Church St., Montrose, PA  
[slantedartcooperative.square.site](http://slantedartcooperative.square.site)

This community cultural center is home to the Slanted Art Cooperative Gallery, the Reimel Centre for Performing Arts and Events, Venice to Madris Tapas & Wine Bar, Yoga by Patti, Art Classes & Workshops, and Special Events. Featured Artists' Receptions are held on the Third Friday of every month, as part of Third Weekend in Montrose events.



## PINK ARROW ARTS

35 Pine St., Montrose, PA  
[Tickets/Classes/Info: pinkarrowarts.org](http://Tickets/Classes/Info: pinkarrowarts.org)

Pink Arrow Arts, located at 35 Pine in downtown Montrose, hosts a monthly speakers Breakfast with the Arts with featured speakers beginning April 13. In addition to the speaker series, Pink Arrow is also the site for workshops, events, Gallery exhibitions, bookstore and shop filled with unique gift items.



## SUSQUEHANNA CO. LIBRARY SYSTEM

458 High School Rd., Montrose  
[susqcolibrary.org](http://susqcolibrary.org)

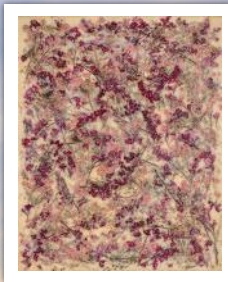
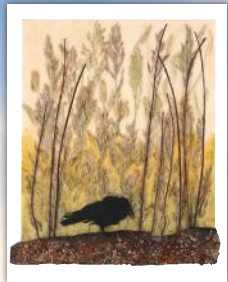
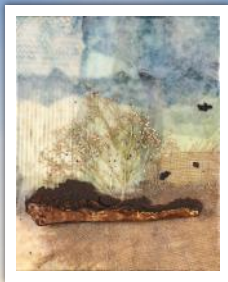
Branches are located in Montrose, Forest City, Hallstead-Great Bend, and Susquehanna Depot. Featuring public programs and events and a "Library of Things," including Birding Backpacks for your SusqCo outdoor adventures, American Girl doll discovery kits, guitars, blood pressure monitors, play and learn "PAL" packs, and special baking pans—perfect for your custom cakes! The Susquehanna County Historical Society and Free Library Association also hosts the annual Blueberry Festival on the Green in Montrose, Aug. 2-3.



## ENDLESS MOUNTAINS THEATRE CO.

[endlessmountainstheatreco.org](http://endlessmountainstheatreco.org)

Founded in 1999, Endless Mountains Theatre Company brings the excitement of live theatre to the local stage. EMTC has a full season of shows planned in 2024, including the Savannah Sipping Society; a Musical Revue & Cabaret; the original comedy, Preppers; Haunted Stories for the spooky season; and a Farndale Christmas Carol.



# DR. SONJI LEE



**2021 - Best Mixed Media**

Cloud Croft Studios and Tioga Arts Council, Owego, NY  
“Every Day Life Every Day Art” – Juried

**2020 - People’s Choice Award**

Butternut Gallery & Second Story Books, Montrose, PA  
Focus, Juried Regional Exhibition

**Schedule your visit to the Art Nest Gallery  
at the Farm at Johnson Pond**

**570-278-5088 • FB@TheFarmatJohnsonPond**

**sonji@thefarmatjohnsonpond.com**





# PERK UP

*Coffee Houses,  
Tea Shops &  
Bakery Treats*

Perk up your day with a stop at one of the exceptional coffee houses in Susquehanna County. Local baristas serve up carefully crafted mugs of your fresh brewed favorites in some of the area's most comfortable spaces. Wherever you find yourself in SusqCo, you're never far from a great cup of coffee and sweet bakery treat.



## ERIE & MAIN – SUSQUEHANNA DEPOT

Relax by one of two fireplaces surrounded by turn-of-the-century industrial charm at Erie & Main Coffee House. Baked goods, breakfast and lunch specials are available, as well as spectacularly-creative seasonal signature drinks—hot and iced—and one of the best cups of hot cocoa sure to warm you in the winter. Check out their Facebook page for food and drink specials and for special events like a “Late Night at the Coffee House.”



**Hours: Monday – Saturday 8-2  
Sunday 8-Noon**



## LYDIA'S BAKE SHOP – MONTROSE

Freshly baked giant cookies taste even better with a cup of tea, cocoa or coffee. Lydia's shares their beautiful original brick-walled space with the delightfully eclectic offerings at Hometown Furniture. Grab a mug and a sweet treat and settle in at one of the window tables providing a grand view of downtown Montrose—including a stunning view of the Susquehanna County Courthouse from their 202 Church Street location.



**Hours: Tuesday – Friday 9-6  
Saturday 9-4**



## MY CUPPA COFFEE – MONTROSE

SusQCo's self-described “sassy” barista serves up a special “Montrose Blend” as the house roast and brews up drinks featuring an ever changing line-up of house-made flavored syrups. Find My Cuppa at their new South Main Street location and join one of the classes and learn to make pasta or tiramisu. Check the bakery case for the best fresh bagels, scones and other sweet treats—including offerings from vintage recipe books so the bakes are “just like Grandma made.” My Cuppa Coffee's drink and lunch specials are posted each week on Facebook.



**Hours: Tuesday, Wednesday & Friday 8-4  
Thursday 7-4 and Saturday 9-1**



## MOUNTAIN VIEW COFFEE HOUSE – CLIFFORD

Between Interstate 81 and Elk Mountain, you'll find the Mountain View Coffee House, with dine-in and grab-n-go food options. Say “yes” to the peppers in the Western Omelet Breakfast Sandwich or you can't miss with the Egg & Cheese with Pork Roll (OMG it's delicious!) on a croissant. You'll also want to try one of the pillow-soft iced cinnamon rolls (sized to share—but you don't have to) and served warm. All your favorite coffee bar classics and flavors are carefully crafted. Try out the bright and vibrant house specialty—a mug of hot, orange-cinnamon tea (also available iced).

Find the specials online!



**Hours: Tuesday – Sunday 7-1**

# WINERIES and BREWERIES



## SAINT JOE'S WINERY

889 Johnson Rd., Friendsville  
570.553.4339  
[saintjoewinery.com](http://saintjoewinery.com)

Tucked away on the edge of the woods—but not too far off the beaten path - is Saint Joe's Winery. Stop in for tastings, with wines available by the glass or bottle. Wine Slushies are also available, along with PA-brewed beers. Sample some of Rick's Ramblin' Raspberry—made with all raspberries and no grapes bringing the bold, fruit flavor to your glass. Also on the menu is Lindbergh's White—named for famed aviator Charles Lindbergh whose plane made an emergency landing in a nearby hayfield during a storm in 1927.

## LUNA WINE & TABLE

2296 Valley View Rd., Franklin Forks  
570.967.2185  
[lunawineandtable.com](http://lunawineandtable.com)

Natural winemakers offer up small-batch red and white wine, aged mead, hard cider, perry, and craft wine cocktails with PA-made distilled spirits. The Amber and the Burnt Honey meads are aged five years, and made with regional real honey. Also on the premises is a plant-based restaurant. Reservations are suggested and call ahead for wine tasting availability. If you're in downtown Montrose, stop by Church Street Marketplace where you will find Luna's newest venture, Venice to Madrid Tapas and Wine Bar.

## HIDDEN CREEK VINEYARD & WINERY

271 Carter Rd., Laceyville  
272.255.3032

The charming Hidden Creek Vineyard & Winery produces handcrafted, award-winning wines from Pennsylvania grapes and local orchards. The winery offers tastings amidst the serene surroundings. The winery is available as a venue for special occasions, events and benefits. Make sure to try the Bluestone Wine—named for the locally quarried flagstone native to Susquehanna County.

# *the* montrose **Wine** Walk

*Save the Date*  
**MAY 18, 2024**

*Downtown Montrose, Pa*

**LOCAL**  
*Wineries*

*Live*  
**MUSIC**

**LOCAL**  
*Artisans*



TICKETS AVAILABLE AT  
**MONTROSEWINEWALK.COM**



**GATES OPEN: VIPs 11:30AM • General Admission 1:00PM**

# WINERIES *and* BREWERIES

## LITTLE IRELAND BREWING CO.

1260 Main St., Susquehanna  
570.853.4644

This craft brewery, located in the heart of Susquehanna Depot, offers up a family-friendly atmosphere in a full service restaurant. Check out the Facebook page to see what's new on tap, weekly food specials and the line-up of live entertainment.

## THE BARR AT RED ROCK

33288 SR 171, Susquehanna  
570.860.6066  
[eatredrockbbq.com](http://eatredrockbbq.com)

Conveniently located in Red Rock BBQ, the BARR brings you carefully crafted beers and seltzers, along with a selection of PA-brewed beers. Try a refreshing ale, rich porter, smooth lager or savor the complex flavor of an IPA. Catch a live performance or test your wits during trivia night.

## 2 DOGZ AND A GUY BREWING

191 Main St., Great Bend  
570.860.2012  
[2dogzandaguybrewing.com](http://2dogzandaguybrewing.com)

Amazing craft beer and a friendly taproom atmosphere awaits at 2 Dogz and a Guy Brewing. The tap list is updated regularly on the website, along with special events happening at the brewery and the food menu. Prefer a mixed drink? Check out the handcrafted cocktails and wine list and scheduled entertainment.

## COUNTRY TRAILS BREWING CO.

SR 706, Montrose  
[countrytrailsbrewing.com](http://countrytrailsbrewing.com)

*Opening Spring 2024!* Visit Susquehanna County's newest brewery located near Heart Lake, just east of Montrose.

## ENDLESS BREWING

20610 SR 29, Montrose  
570.967.0985

A few miles north of Montrose, Endless Brewing brings the beer and cheer with their ever-evolving tap list. Sample the array in a flight or by the pint and take home a growler filled with your favorite. Check out their Facebook page for the to find out what's on tap, as well as the delicious food offerings and Sunday Funday brunch specials.

 **Leatherstocking**  
GAS COMPANY LLC

**SAVE WITH LOW-COST  
NATURAL GAS!**

**UP TO \$1600 IN REBATES**

- \$1000: Energy Efficient Furnace, Water & Steam Boilers
- \$400: New Tankless Hot Water Heaters
- \$200: New Hot Water Heaters : Boiler Reset Controls

**UP TO \$3200 IN TAX CREDITS**  
ON QUALIFIED ENERGY EFFICIENT  
APPLIANCES & PRODUCTS

**Natural Gas: The Fuel of Choice  
for Home Heating, Hot Water & Cooking**

**570-278-5863**  
[WWW.LEATHERSTOCKINGGAS.COM](http://WWW.LEATHERSTOCKINGGAS.COM)



# A PENNSYLVANIAN TWIST ON TEXAS-STYLE BBQ

Opened in 2016 by the Freitag-Lee Family, the business has quickly expanded! The Barn At Red Rock opened in Summer 2020 and has become a hotspot for a multitude of events with its 100-year-old hand-hewn beams, wood slat structuring and two levels of beautifully decorated event space. In 2022, the Brant House, a 4-bedroom & 4-bath farmhouse was added creating more opportunities for guests. The newest venture, The Brewery at Red Rock, aka The B.A.R.R., opened in February 2024 with on-site brewing and an array of wine and spirits from across the state—SHOWCASING THE VERY BEST PENNSYLVANIA HAS TO OFFER!



**RED ROCK**  
BBQ LLC & CATERING

**THE barr**  
BREWERY AT RED ROCK LLC

570.860.6066 • 33288 Rte 171, Susquehanna, Pennsylvania 18847 • [eatredrockbbq.com](http://eatredrockbbq.com)

Restaurant & Brewery open Thursday—Sunday • Catering available 7 days a week

## Saint Joe Winery

889 Johnson Rd  
Friendsville, PA 18818

570-553-4339  
[saintjoewinery.com](http://saintjoewinery.com)

 Saint Joe Winery

Family  
Owned &  
Operated





# OUTDOOR *adventures*

## ELK MOUNTAIN SKI RESORT

344 Elk Mountain Rd., Union Dale  
[elkskier.com](http://elkskier.com)

180 Acres. 27 Trails. Named “Best Overall Mountain” in the Mid-Atlantic Region—Elk Mountain Ski Resort utilizes advanced snowmaking techniques that extends the season on the slopes with perfect powder. Elk Mountain introduced its tree nursery program in the 1970s and is committed to maintaining the natural terrain of the region. Check the website for hours, up-to-date ski conditions, lift tickets, packages and passes. From Green Circle to Black Diamond, skip the crowds in the Poconos and Vermont and experience the Elk Mountain difference.

## FLORENCE SHELLY PRESERVE

State Route 171, Thompson  
[nature.org](http://nature.org)

Immerse yourself in a biodiverse habitat and lush natural beauty of the 380-acre Florence Shelly Wetlands Preserve. Fabulous opportunities for birding in the fields and woodlands, including a glacial pond surrounded by a floating bog. A boardwalk begins near the parking lot, winds through the hemlock forest with the hike paying off at the marsh overlook. Guide sheets for the trail are available at the trailhead just off Stack Road. Dogs are not allowed at the preserve.

## ENDLESS MOUNTAINS HERITAGE REGION

602 Main St., Ste. 7, Towanda • [emheritage.org](http://emheritage.org)

Water, wheel and wander with the Endless Mountains Heritage Region. EMHR serves as the water trail manager for the upper North Branch Susquehanna River Water Trail—the 2023 Pennsylvania River of the Year. EMHR hosts kayaking sojourns on the river. Join in the fun for the Dam Removal Celebration Paddle planned for June 1 in Susquehanna Depot. The Endless Mountains Gravel Bikepacking Loop winds its way over 400 miles through four counties—including SusqCo! Join the loop at any point and plot your route with the map available at [emheritage.org](http://emheritage.org).

# PENNSYLVANIA Trail OF THE Year 2021



## D&H RAIL-TRAIL

The 38-mile-long D&H Rail-Trail winds through Lackawanna, Susquehanna, and Wayne Counties as it follows the former corridor of the Delaware & Hudson Railway, which carried anthracite coal out of the Lackawanna Valley. From its beginnings in the Lackawanna Heritage Valley, the D&H enters the Endless Mountains Heritage Region, known for its farms and bluestone quarrying. It passes under the historic Starrucca Viaduct, the "bridge of stone" in Lanesboro. The D&H attracts runners, hikers, bikers, and equestrians, and in winter, cross-country skiers appreciate the trail grooming done by the snowmobile club who use the D&H as the backbone of their snowmobile trail system. Managed by the Rail-Trail Council of NEPA, the D&H is improved for 20 miles in the south from Carbondale to Ararat and 6 miles in the north from Stevens Point to the NY border. Plans are to continue improvements in the trail's mid-section.

For a trail brochure/map or more information on trail events and programs, contact the Rail-Trail office at 570-679-9300 or [nepatrails@gmail.com](mailto:nepatrails@gmail.com). Stop by our trail office at 948 N. Main Street Union Dale.

Visit our website at [www.nepairailtrails.org](http://www.nepairailtrails.org)



# PUMP PANTRY *N*

OPEN 24 HOURS • OPEN 24 HOURS • OPEN 24

## SUSQUEHANNA COUNTY LOCATIONS:

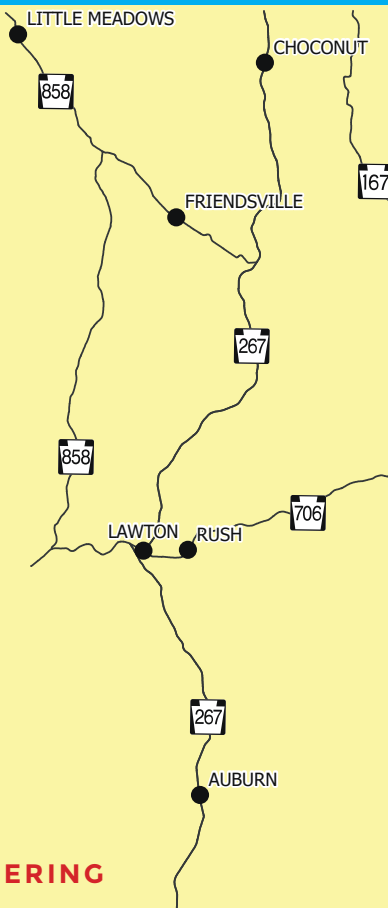
Montrose, Great Bend,  
New Milford, Lenox

## FIND A PNP NEAR YOU!

Dushore, Nicholson, Tunkhannock—Rt. 6,  
Tunkhannock—Rt. 29, Lake Winola,  
Pikes Creek, Troy, Mansfield,  
Tioga, Canton



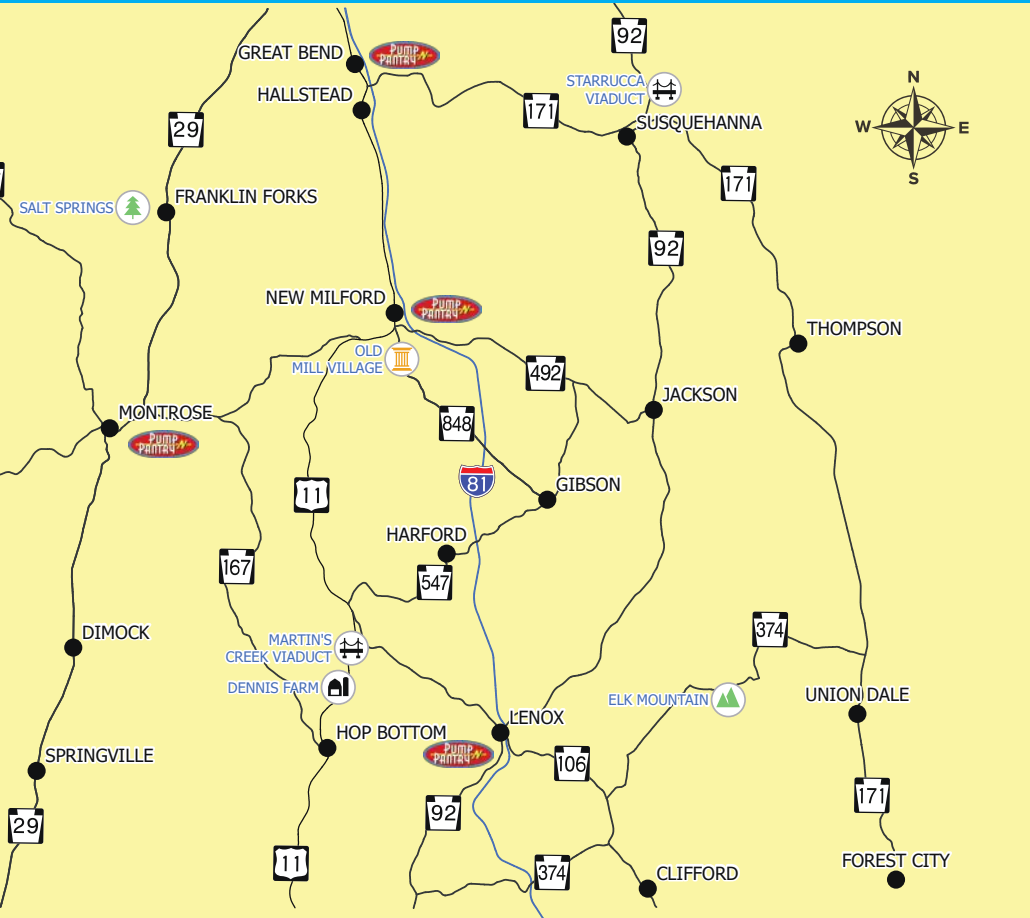
ORDER ONLINE!  
[PUMPNPANTRY.COM/MOBILE-ORDERING](http://PUMPNPANTRY.COM/MOBILE-ORDERING)



# OUR HOMETOWN PROMISE

Great Food  
Exceptional Service  
Clean Stores

HOURS • OPEN 24 HOURS • OPEN 24 HOURS



## WOODBOURNE PRESERVE

State Route 29, Dimock  
[elrose.org](http://elrose.org)

The Woodbourne Forest and Wildlife Preserve has been acquired by the local Edward L. Rose Land Conservancy. The Preserve is a 630-acre property, open to the public, with a well-marked parking area and includes old growth forest, transitional fields, a large pond and a beautiful wetland with a viewing platform for birders. With its diverse environment and over six miles of maintained trails, it is a hiker's and naturalist's delight. The Nature Conservancy, a national land trust, became the owner of the Woodbourne Preserve in 1956 when it was donated by the Cope family with the stipulation that it be maintained as a preserve in perpetuity. It was the first property acquired by The Nature Conservancy in Pennsylvania. The preserve continues to be managed with help from a committed volunteer stewardship committee that has been involved in the operations of the preserve since its inception. The dedicated committee of local citizens assists in maintaining the Preserve and its trails, and implementing environmental education programs for local schools, scout troops, surrounding community groups and other visitors.

## SALT SPRINGS STATE PARK

Silver Creek Rd., Franklin Forks • [friendsofsaltspringspark.org](http://friendsofsaltspringspark.org)

📍 Friends of Salt Springs Park

Climb three waterfalls, explore an old growth hemlock forest, make a wish at "Penny Rock," pitch a tent under the stars, and catch an environmental or historical program at Salt Springs Park. About half of the 842-acres is a state park—the only state park in the Commonwealth managed by a non-profit organization. The remaining lands are owned by the Friends of Salt Springs Park with the public invited to enjoy the streams and woodlands, historic building, cottages and picnic grounds. There are nearly 15 miles of hiking trails. The Overlook Trail is ADA accessible, winding through the forest and connecting to the Hemlock Trail near the waterfalls observation platform. The park's namesake—a bubbling salt spring—is located at the base of the gorge. Public programs are held at the park throughout the year. Check the Friends of Salt Springs Park website for the most up-to-date list of guided hikes, workshops and events.

## RAIL-TRAIL COUNCIL OF NEPA

948 North Main St., Union Dale  
[neparailtrails.org](http://neparailtrails.org)

Old railroad beds have taken on a new life with the 38 miles of improved trails managed by the Rail-Trail Council of NEPA, Inc. The trail offers a safe way to experience nature. The D&H Rail Trail was named Pennsylvania's 2021 Trail of the Year! The D&H travels from the Simpson Viaduct through Forest City and northward to Union Dale. Find the Rail-Trail office, the caboose and informational signage at the Rail-Trail office in Union Dale. Continuing north, the D&H takes hikers and bikers to the historic Starrucca Viaduct in Lanesboro and onward to the New York border. In 2022, the improved Stevens Point Trailhead opened taking hikers and bikers along that section of trail to Luciana Park in Lanesboro and a beautiful view of the Starrucca Viaduct. The Rail-Trail Council controls the first 8-miles of the O&W from Simpson up to the Stillwater Dam. Hike to Panther's Bluff, a 1,500-acre conservation area, from the O&W's original railbed surface. The Endless Mountains Trail is 10-miles from Alford to Montrose and is considered among the first rail-trails in the United States. A trailhead marker, along with the easiest access point is located on Grow Avenue, near the Pump N Pantry convenience store.

*Enjoy the Cozy Atmosphere!*

**Mountain View**  
Coffee House • Lodge • Tavern  
Clifford, Pa

**Stay in Our Comfy Rooms!**

- 7 Large Double Queen Rooms & 3 Large Single King Rooms
- Private bathroom
- Air-conditioning
- Tub and shower
- Wi-Fi (free)
- Cable TV
- Coffee Maker

*Convenient Self-Check-in!*



**Have a drink or bite anytime!**



- Coffee House & Tavern
- Breakfast, Lunch & Dinner
- Pizza Parlor inside!
- Appetizers, Entrées & Desserts

1818 Main Street | Clifford, PA 18413 | (570) 806-2102  
*Book online at [www.mountainviewclifford.com](http://www.mountainviewclifford.com)*

**ARLO'S**



**Country Store & Tavern**

**LIVE MUSIC EVERY WEEKEND  
BEER & WINE TO GO  
GAS-DIESEL-PROPANE**  
Route 171 Uniondale, Pa. 18470  
OPEN 7 DAYS 6am-9pm (570)727-2970

# 2024 *events*

## APRIL

### 6: TROUT SEASON OPENING DAY

Check out [fishandboat.com](http://fishandboat.com) for information on licensing, daily limits, and regulations!

...

## MAY

### 3-5: ENDLESS MTS. THEATRE CO. PRESENTS THE SAVANNAH SIPPING SOCIETY

Reimel Centre, 158 Church St.,  
Montrose, PA

Find Endless Mountains Theatre Company on Facebook for more info on auditions, tickets and showtimes.

### 18: MONTROSE WINE FESTIVAL

Downtown Montrose, PA

Wineries, cideries, breweries, food, live entertainment benefits United Way of Susquehanna County, [unitedwayofsusquehannacounty.org](http://unitedwayofsusquehannacounty.org)

...

## JUNE

### 1: PADDLE THE NORTH BRANCH OF THE SUSQUEHANNA RIVER WITH ENDLESS MOUNTAINS HERITAGE REGION

Ira Reynolds Riverfront Park,  
Susquehanna Depot, PA

Celebrate the 25th anniversary of EMHR, the removal of the dam from the river, and Pennsylvania's 2023 River of the Year!  
Info: [emheritage.org](http://emheritage.org)

### 12-16: VIETNAM VETERANS TRAVELING WALL

Hallstead American Legion Post 357,  
New York Ave., Hallstead, PA

Sponsored by ALA Unit 357.

There is no fee charged to visit the Wall.

### 15: FATHER'S DAY CELEBRATION

Salt Springs State Park

Info: [friendsofsaltspringspark.org](http://friendsofsaltspringspark.org)

### 29: JULY 4 HOLIDAY WEEKEND CELEBRATION

Salt Springs State Park

Music, campfire, hikes. Celebrate Dad in one of SusqCo's most beautiful places.

Info: [friendsofsaltspringspark.org](http://friendsofsaltspringspark.org)

...

## JULY

### 4: INDEPENDENCE DAY CELEBRATION

Downtown Montrose

5k & 10k Road Races; HUGE Patriotic Parade, vendors, chicken barbecue, food, fireworks.

Info: [montrosepajuly4th.com](http://montrosepajuly4th.com)

### 13: SALT SPRINGS STATE PARK BAT COUNT

Salt Springs State Park

Help monitor the health of Pennsylvania's summer bat colonies at Salt Springs State Park  
[friendsofsaltspringspark.org](http://friendsofsaltspringspark.org)

### 17-20: SUSQUEHANNA HOMETOWN DAYS

Erie Blvd., Susquehanna Depot

Rides, food, games, entertainment, vendors, parade, and Dan Wolfe Memorial 5K Run/Walk. Find the Susquehanna Community Development Association on Facebook for more information.

### 25-27: CLIFFORD TOWNSHIP VOLUNTEER FIRE CO. PICNIC

1035 SR 106, Clifford

Food, games, rides, parade, fireworks, chicken barbecue.

### 26-28: ENDLESS MTS. THEATRE CO. MUSICAL REVUE & CABARET

Reimel Centre, 158 Church St.,  
Montrose, PA

Find Endless Mountains Theatre Company on Facebook for more info on auditions, tickets and showtimes.





SO GOOD YOU DON'T WANT

**TO PUT  
IT DOWN**

*it's* **DINER**  
*time*



# 20% OFF

## entire guest check

One coupon per table, per visit. Not valid on national holidays, with the Everyday Value Slam®, Super Slam™, AARP or any other coupons or promotional offers. Coupon has no cash value. No change returned. Taxes and gratuity not included. Alcoholic beverages not included. Valid at participating Denny's restaurants. Selection and prices may vary. Only original coupon accepted. Photocopied and internet printed or purchased coupons are not valid. No substitutions. Offer valid dine in only. Not valid for online orders. Restrictions apply. © 2024 DFO, LLC. Printed in the U.S.A. Offer ends 12.31.24

**VALID AT:**

The Flying J

1623 Oliver Rd • New Milford, PA

570-465-2178



88550015

## AUGUST

### 2-3: BLUEBERRY FESTIVAL

#### Montrose, PA on the Green

Breakfast served both mornings; used book tent, bake sale; crafts, food, games for kids.

Info: [susqcolibrary.org](http://susqcolibrary.org)

### 12-17: 164TH HARFORD FAIR

#### Fair Hill Rd., New Milford

Rides, games, animals, entertainment, truck & tractor pulls, demolition derby. THE BEST WEEK OF SUMMER!

Info/advanced tickets: [harfordfair.com](http://harfordfair.com)

### 17: TASTE OF THE ENDLESS MOUNTAINS BEER & WINE FEST

#### Salt Springs State Park

Come experience the best offerings from regional breweries and wineries.

Info: [friendsofsaltspringspark.org](http://friendsofsaltspringspark.org)

...

## SEPTEMBER

### 7: CLIFFORD PARKFEST

Vendors, Entertainment, Food, Carriage Rides. Come explore the walking trails and all Clifford Township Park has to offer visitors!

Info: [cliffordtownship.org](http://cliffordtownship.org)

### 13-15: ENDLESS MOUNTAINS THEATRE CO. PRESENTS THE ORIGINAL COMEDY, PREPPERS, ON STAGE

#### Reimel Centre, 158 Church St., Montrose, PA

Find Endless Mountains Theatre Company on Facebook for more info on auditions, tickets and showtimes.

### 15: SALT SPRINGS PARK FALL PICNIC

#### Salt Springs State Park

Bid farewell to summer and welcome the fabulous fall at Salt Springs State Park.

Info: [friendsofsaltspringspark.org](http://friendsofsaltspringspark.org)

### 21: WOOFSTOCK 2024!

#### Salt Springs State Park

Annual Peace, Love & Drool Celebration held at Salt Springs State Park benefiting Susquehanna County's no-kill animal shelter, True Friends Animal Welfare Center. Vendors, entertainment, food. Info: [truefriendsawc.com](http://truefriendsawc.com)

...

## OCTOBER

### 12-13: ELK MOUNTAIN FALL FESTIVAL

#### Elk Mountain Ski Resort

Artisan and Craft Vendors, Festive Food, Scenic Chair Life Rides, Hayrides, Shuttle Parking. Info: [elkskier.com](http://elkskier.com)

### 12-14: ARTISTS' OPEN HOUSE STUDIO TOUR WEEKEND

Self-guided tour around Susquehanna County as resident artists open their studios to visitors. Artists on the tour work in various media, including paint, sculpture, fiber arts, glass and more. Info: [artiststour.com](http://artiststour.com)

...

## NOVEMBER

### 25: DEER SEASON, REGULAR FIREARMS OPENING DAY

Check out the Pennsylvania Game Commission website, [pgc.pa.gov](http://pgc.pa.gov) for information on licensing and state regulations.

...

## DECEMBER

### 6-8: CHRISTMAS IN MONTROSE

#### Montrose, PA

Three days of family-friendly events and attractions in PA's premiere small town holiday destination! Vendors, 5k Run/Walk, 'Taste of Montrose' tours, Holiday Light Parade, Community Chorale Concert, Shopping, Games, Photos with Santa, Carriage Rides, Entertainment and More! Info: [christmasinmontrose.com](http://christmasinmontrose.com)



# Christmas in MONTROSE

DECEMBER 6-8<sup>TH</sup> 2024

**FREE PHOTOS WITH SANTA**  
**FREE HORSE DRAWN CARRIAGE RIDES**  
**CHRISTMAS MARKET WITH 80+ VENDORS**  
**SUPER FUN PHOTO OPS & MORE!**



**THANK YOU TO OUR 2023 SPONSORS!!**



Montrose Borough



Thank you to Susq Co Career & Technology Center for building the wooden store fronts on the Green!

Nice Entertainment  
DJ Dave Nice



June & Earle Wootzen Fund  
at Community Foundation



Advertising funded in part by Susquehanna County Promotion & Tourism Room Grant Funds

**CHECK OUT OUR WEBSITE! [WWW.CHRISTMASINMONTROSE.COM](http://WWW.CHRISTMASINMONTROSE.COM)**

A bride and groom are shown in a romantic embrace, kissing. The bride is wearing a white wedding dress, and the groom is in a dark suit. They are standing on a grassy area in front of a rustic log cabin. A sign in the background reads "JACK CABIN". The scene is set during the golden hour of sunset, with warm light filtering through the trees.

# CONNECT

## *at Camp Bluestone*

1290 Stalker Hill Road  
Thompson, PA 18465  
609.709.7117  
[campbluestonevenue.com](http://campbluestonevenue.com)

**Designed as a place for people to gather, Camp Bluestone, offers a vacation and event venue experience nestled among the rolling hills in Thompson—just minutes from Elk Mountain Ski Resort and the Rail-Trail. The space is the perfect venue to host an intimate wedding, corporate gathering, family vacation or romantic getaway.**

The pavilion, along with the fire pit, serve as a common area at the Camp. "People come and meet around the fire pit, whether they are traveling with a group or individually. It's this really cool thing that happens—the old-fashioned concept of telling stories around the fire," says Camp Bluestone owner Lisa Devaney.

It's the type of meeting place Lisa and her husband, Bob, wanted to bring about when they began to renovate the property. When Lisa was a young child, her family bought a house trailer in the area—a place where they could come enjoy the quiet countryside. "And then, when our kids were born, we put a house on the same piece of property and raised our kids here," she



said. "They were literally catching frogs in the pond."

During a 2017 trip to New York's Finger Lake Region, the Devaney's were inspired by a barn venue where cheese and wine were being served. Before they even returned home from the weekend, they had made a deal to buy the 25-year abandoned camp near their home. "It was a hot mess," Lisa says. Work and renovations began the next year. "We decided it shouldn't just be a rental place, that it should also be an event venue. The cabins—now four on-site—were finished one at a time. "People just never stopped coming," she notes.

For those looking to experience the area without busy weekend crowds, mid-week rentals at Camp Bluestone are available. "It's perfect for retirees, work-from-home, or homeschool families looking to explore the area," Lisa adds.

Camp Bluestone is rated a "Guest Favorite," on AirBnB, a rating the booking site describes as "one of the 'most-loved' places to stay." The listings are loaded with top reviews. One visitor writes: "It was the perfect getaway spot! Quiet, clean, quaint with a beautiful view. The night sky was the icing on the cake."

Lisa says, "We sit on top of the mountain. Our view and our sunsets are unbelievable—it's just beautiful!"

In addition to being a getaway destination, Camp Bluestone has the additional focus of serving as a wedding and special event venue. "It's a DIY wedding," Lisa says. "You rent the space and we supply you with the table, chairs, basic accessories, and planning help. You have the ability to do what you please. Our wedding couples are creative people, and our philosophy is that we are in the business of accommodations, but wouldn't it be cool to give people the option to get married without mortgaging their life."

"It's appealing to couples that they get to spend the whole weekend there. People love the idea that it's not a five-hour event." There are two wedding packages available: one for an intimate gathering of up to 50 guests, and the other for parties up to 200. Packages include a wedding planning portal, as well as helpful tips for ceremony ideas, vendors, and additional lodging.

Lisa likes the collaborative nature of getting to know the other businesses in the area. Couples that choose a Camp Bluestone wedding have come from neighboring counties, but also from Philadelphia or Vermont. "Sometimes people who grew up in this area come back here to have their wedding," she says. "That's kind of cool."

COME *Explore* THE ENDLESS MOUNTAINS WITH US!



Water Trail Manager for the  
2023 PA RIVER OF THE YEAR  
the Susquehanna River  
North Branch Water Trail

Promoting our outdoor  
activities, preserving our  
history and ensuring a  
bright future for our Region.

Serving Bradford, Sullivan,  
Susquehanna, & Wyoming counties



[www.emheritage.org](http://www.emheritage.org) (570) 265-1528

Check us out on Facebook and Instagram!

# THRIFT BOUTIQUE

## NEW INVENTORY DAILY!

- CLOTHING, SHOES & ACCESSORIES
- SMALL HOUSEHOLD APPLIANCES
- COLLECTABLES & ANTIQUES
- SMALL ELECTRONICS & TOOLS
- & MORE SPECIAL TREASURES!

## SHOP FOR A PURPOSE

With funds raised at the stores, Interfaith is able to provide the necessary emergency assistance and various programs to help families, individuals and senior citizens in the community.

570-278-1776 | [www.interfaithsc.org](http://www.interfaithsc.org)



SUSQUEHANNA COUNTY  
INTERFAITH

526 Church Street | Montrose, PA 18801  
695 Jackson Avenue | Susquehanna, PA 18847  
500 Main Street | Forest City, PA 18421



# Conklin's Unique Country



- Custom Furniture
- Home Décor
- Gift Items
- Flameless Candles
- Gourmet Food Items
- Purses
- Soaps & Lotions
- Antique Lumber
- Gift Cards

Bring in this coupon and receive 20% off an item of your choice  
(a few exclusions apply - no lumber items) through December 31, 2024.

[www.conklinsbarnwood.com](http://www.conklinsbarnwood.com)

570-465-5500

Directions: Exit 223 off I-81 to Rte 492 (East). 3.5 miles to Lakeside.  
Turn left onto Butterfield Road (dirt road). Take first left after pond.  
Normal business hours: Monday - Saturday, 10am - 4pm



**Quality Equipment**  
**Competitive Pricing**  
**Exceptional Service**

*Serving Susquehanna, northern Wayne & southern Broome Counties*



**Party & Event Rentals**

**Formal Wear**

**Balloons & Decor**

*Tent, Table & Chair Packages Available for Any Size Event!*

[creekroadrentals.com](http://creekroadrentals.com)

570-727-2408

[info@creekroadrentals.com](mailto:info@creekroadrentals.com)

# CHURCH STREET Marketplace

YOUR COMMUNITY CULTURAL ARTS CENTRE

Home of:



*Small Plates for All People*  
Thurs & Fri 4:30-9  
Sun 10-2  
570-967-2185



*Yoga for everyBody*  
570-647-9490



*A creative collective of  
fine artists and artisans*  
Tues-Fri 10-6  
Sat 10-4  
Sun 11-3  
570-243-1075



*An intimate performing arts  
venue - concerts, theatre,  
dance, and art exhibits.*  
Follow us on FB for events.  
484-629-5934

Tues-Fri 10-2  
570-967-2185



*All Under One Roof!*

FOLLOW US ON FACEBOOK FOR MORE EVENT DETAILS.

484-629-5924 158 CHURCH ST MONTROSE, PA

*Artists'  
Open  
house  
Weekend*

## 28th Annual Studio Tour

Columbus Day Weekend  
Indigenous People's Day

October 12, 13 & 14, 2024

10-5 each day

**FOLLOW THE ORANGE ARROWS TO 20+ ARTISTS  
AND ACTIVITIES IN TWO DOZEN LOCATIONS**

# ARTISTSTOUR.COM



#VisitSusqCo  
**SUSQUEHANNA  
COUNTY**  
PROMOTION & TOURISM AGENCY



**KITSON  
ARTS  
ALLIANCE**



# Your local real estate experts!

Don't settle for less...  
call us, your local professionals, for all your real estate needs!



## Angelia "Angie" Hall

Licensed Real Estate Salesperson PA  
Cell: **607-761-6222**

## Alan Hall

Licensed Real Estate Salesperson in PA & NY  
Cell: **607-229-7606**



Real Estate Services

17606 SR 706, Suite A, Montrose, PA 18801 / 570-278-0505 / howardhanna.com



### 2024 SEASON

ON STAGE AT THE REIMEL CENTRE  
158 CHURCH STREET, MONTROSE, PA

SAVANNAH SIPPING SOCIETY  
MAY 3, 4 & 5

MUSICAL REVUE & CABARET  
JULY 26, 27 & 28



PREPPERS  
SEPT. 13, 14 & 15

HAUNTED ANTHOLOGY  
OCT. 25, 26 & 27



FARNDALE CHRISTMAS CAROL  
DEC. 6, 7 & 8



THEATRE CAMP FOR MIDDLE & HIGH SCHOOL STUDENTS!  
ACTING, IMPROV, DANCE, VOICE  
JULY 15-19



Watch for auditions, show and ticket information at  
[endlessmountainstheatre.org](http://endlessmountainstheatre.org)

Find us on

Funded in part by the Susquehanna County Room Tax Fund through the Susquehanna County Promotion and Tourism Agency



E-Liquids

CBD

Delta Products

Disposables



499 S. Main St. • Montrose, PA

Tuesday - Saturday: 11AM-6PM

Follow us: [fb.com/MrZimZimsMontrose](https://fb.com/MrZimZimsMontrose)



**Coordinating Economic and Community  
Development throughout the Region**



570-265-0937 • [authority@cbprogress.org](mailto:authority@cbprogress.org) • [www.cbprogress.org](http://www.cbprogress.org)

*Progress Authority*

## The Forest City News

JOHN P. KAMEEN, PRESIDENT

PATRICIA STRIEFSKY, PUBLISHER

*the News and Advertising voice  
of the greater Forest City Area*

636 Main Street, Forest City  
570-785-3800 FAX 570-785-9840

E-mail [fcnews@nep.net](mailto:fcnews@nep.net)  
[www.forestcitynews.com](http://www.forestcitynews.com)



**Forest City Area  
Historical Society**  
629 Main St.  
Forest City, PA  
18421

Call  
570-785-3800 or  
email  
[jdoyle@nep.net](mailto:jdoyle@nep.net)  
for more  
information

### **Mining History Displays**

The Museum is open from  
April through November at  
limited times. Please visit  
our website for open hours.

Visit the society and museum online at  
[forestcityareahistoricalociety.org](http://forestcityareahistoricalociety.org)

202 CHURCH STREET IN MONTROSE



## HOMETOWN FURNITURE

Custom made Amish tables and chairs

Made in the USA couches, sectionals, recliners

Quality Rugs

Bedding and towels, sheets, comforters

570-396-6300



Home Decor & Clothing Boutique

## HOMETOWN FINDS

570-396-6300

226 CHURCH STREET IN MONTROSE

202 CHURCH STREET IN MONTROSE

## LYDIA'S BAKE SHOP

Specialty Cookies

New flavors every month!

Follow us on Facebook

@lydiasbakeshop

570-533-7195



## SUSQUEHANNA COUNTY HOUSING & REDEVELOPMENT AUTHORITY



PROVIDING SAFE, SANITARY, AND AFFORDABLE HOUSING TO SUSQUEHANNA COUNTY RESIDENTS FOR OVER 50 YEARS

570-278-3011

[www.susqcohra.com](http://www.susqcohra.com)

## FIELDSTONE FARM VACATION RENTAL ON LAKE MONTROSE

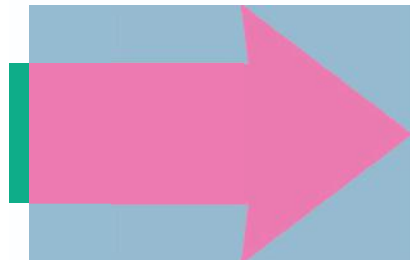
607.765.7867

[airbnb.com/h/fieldstonefarmlakehouse](https://airbnb.com/h/fieldstonefarmlakehouse)

[www.fieldstonefarmbandb.com](http://www.fieldstonefarmbandb.com)

## PINK ARROW ARTS

GALLERY-BOOKSTORE-CLASSES-EVENTS



35 PINE STREET, MONTROSE, PA  
APRIL - DECEMBER, THURS-SAT 11AM-4PM



[www.PinkArrowArts.org](http://www.PinkArrowArts.org)





# MALONEY'S

**Irish Sports Pub  
& Restaurant**  
Route 11, Hallstead, PA

since 1998  
Great Food  
Fun Friends  
Lottery & Other Games



**570-879-9952**

**www.maloneysnepa.com**



Auto • Home • Business • Life

***Call us for a quote today.***

**The Sipe Agency Inc.**

210 Maple St.  
Montrose PA 18801  
PO Box 610  
Wyalusing PA 18853

**570 278 ERIE (3743)**  
**570 746 9025**

**Brian Sipe - Owner**  
**Bill Kelley - Agent**

Not all companies are licensed  
or operate in all states.  
Not all products are  
offered in all states.  
Go to [erieinsurance.com](http://erieinsurance.com)  
for company licensure and  
territory information.



## **Wellness Arts Center**

200 Lake Avenue, Montrose, Pa

*Your destination for personal  
and cultural enrichment.*

570.290.7397 [wellnessarts.com](http://wellnessarts.com)

the best week of the summer

# Harford Fair

**AUGUST 12-17, 2024**

f i d

**www.HarfordFair.com**

FOREST CITY, PA  
EST. 1888  
VISITFORESTCITYPA.COM

STAY | EAT | PLAY | SHOP | LEARN | CELEBRATE | EXPLORE

f GFCBANEPA

i GREATERFCBUSINESSALLIANCE

**OCTAGON BARN**  
*at Woodbourne*  
WEDDING & EVENT VENUE

**Wedding & Event Venue**  
**Reserve your date now!**

914 Woodbourne Road  
Montrose, Pa 18801

**570.767.7000**

**FROGGY HOLLOW FARM  
BED & BREAKFAST**

12316 SR 92, South Gibson, PA 18842

Suite with Private Bath

Hot Tub on Deck Overlooking Fields & Stream

3 Bedrooms with Shared Newly Renovated Bath

In-Ground Heated Pool

Pet Friendly

Close to I-81 & Elk Mountain

**570-756-3063**  
Owner on Premise

*find your way*

**visitsusqco.com** f i x



## Located in Historic Downtown Montrose!

- Clothing, Jewelry & Handbags
- Unique Greeting Cards
- Pottery & Candles
- Local Honey & Maple Syrup
- Montrose Merchandise
- Baby & Children's gifts  
& So Much More!

14 Public Ave Montrose

Hours: Tues-Fri 10-5, Sat 10-3

570-278-6343 [fromtheheartpa.com](http://fromtheheartpa.com)



ART BY THE AWARD-WINNING METAL SCULPTURE ARTIST,  
**JEREMY WERKHEISER**



*The capacity to dream and bring forth reality lives within us all.  
The heart of Metal Relic lies in the belief that you should never let fear  
or negativity stop you in the search of your passion.*

**METALRELIC.COM**



# COTERRA

Embracing the significant cultural and historical importance of **Susquehanna County**



Experience Its **Past** and **Feel Its Presence**



Coterra Energy proudly supports The Dennis Farm Charitable Land Trust, unveiling the "Liberty Bell for the future" for America's 250th in 2026.



**SCAN THE QR CODE** To Learn More About  
The **History Within Susquehanna County.**

# PENNSYLVANIA'S BEST SKIING & RIDING!

*It's Like Skiing  
in Vermont...  
without the Drive!*



**ELK**  
**MOUNTAIN**®

