

GET SMART

# THE CONNECTED SHOP



**SMART LIGHTBULB CAMERA  
USER MANUAL**

Welcome to the Smart Lightbulb Camera User Manual. Your easy, step-by-step guide to set up and connect your Smart Lightbulb Camera. The device is designed to be easy-to-use and to replace all average camera monitors with this modern one.



# SUMMARY

---

## I. Device Set Up



- 1. Set-up Guide
  - a) Set-up Video

## II. Mobile App Connection



- 3. Registering on the Mobile App
  - a) Downloading the Mobile App
  - b) Adding Devices

## PACKAGING DETAILS

---

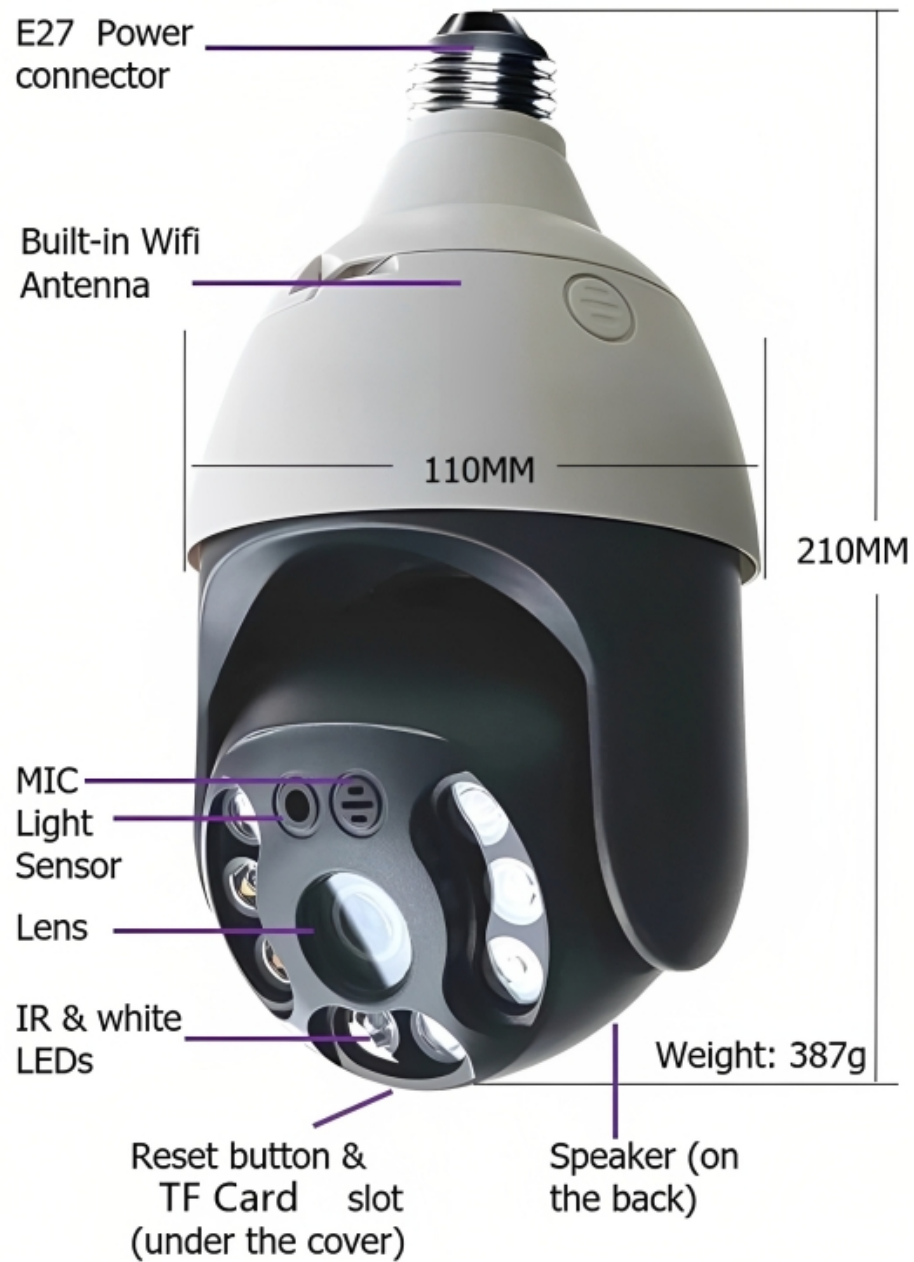


1 Smart Lightbulb Camera

2 E27 Bulb Holder & Screws

## STEP-BY-STEP SET-UP GUIDE

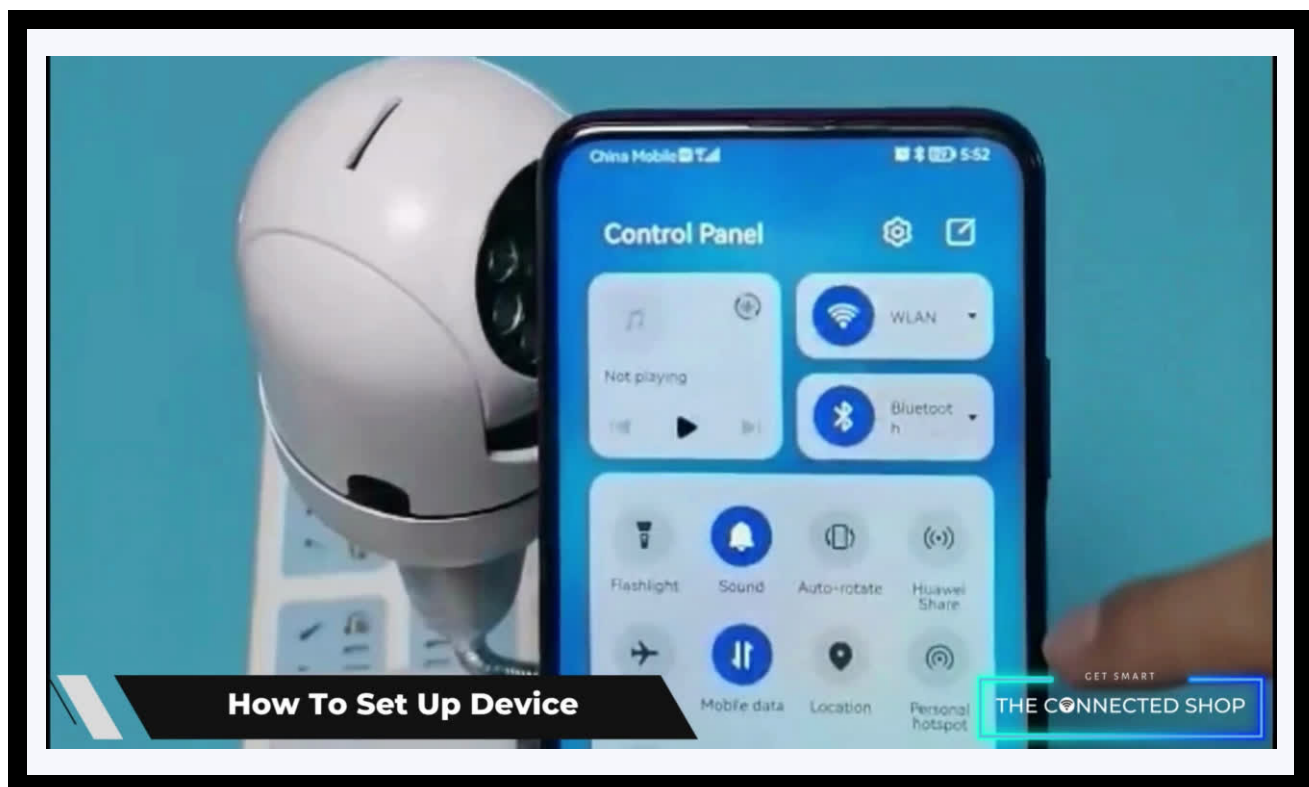
---



## 1. SET UP



- Remove all items from their original box and insert the SD Card
- Install the light bulb holder to the device and use the screws to mount it in place
- Please proceed to the following steps on how to pair the device with the mobile app to remotely manage it
- Make sure to generate a QR code from the mobile app and scan it using the device to finish pairing



## 2. MOBILE APP CONNECTION



### a) Downloading the App

Download the application on the Google Play Store or Apple AppStore by searching “Tuya Smart” or by scanning the QR code below

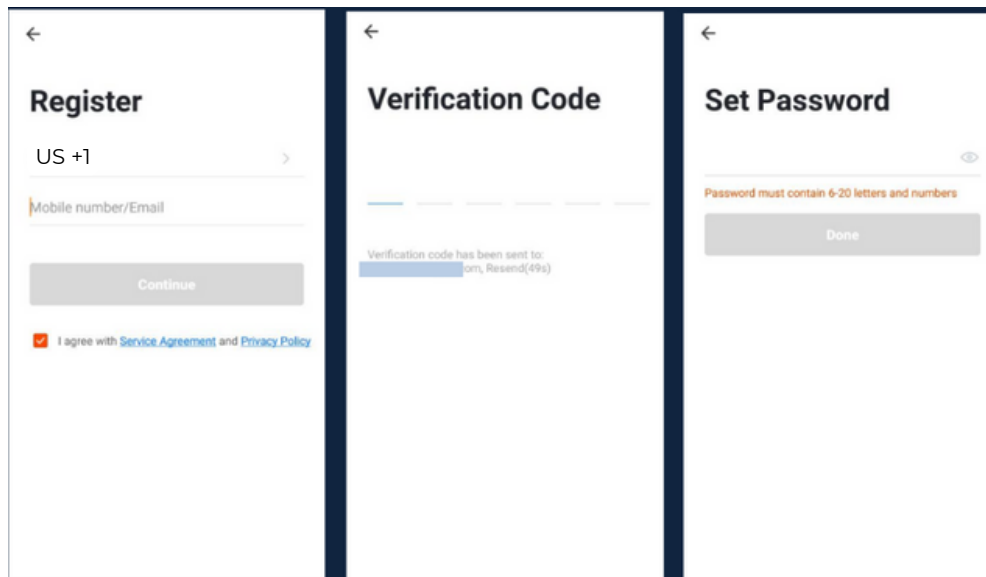


### b) Logging in and Registering

#### After Downloading the App

- Select the country from which you will be using the device, usually the app will prompt it automatically
- You will be redirected to register via email where a verification code will be sent and proceed to enter it on the app in the allotted time limit
- Once the verification code has been entered into the app, you will be asked to set your password
- You will then have full access to the Tuya Smart Platform

## 2. MOBILE APP CONNECTION

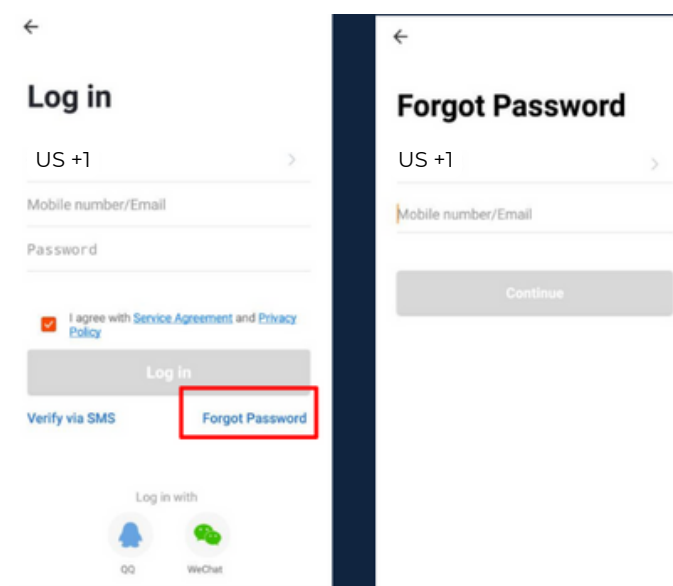


Should you be an existing user to the Tuya Smart Platform, log in using your email and password from the login page.

### c) Resetting your Password

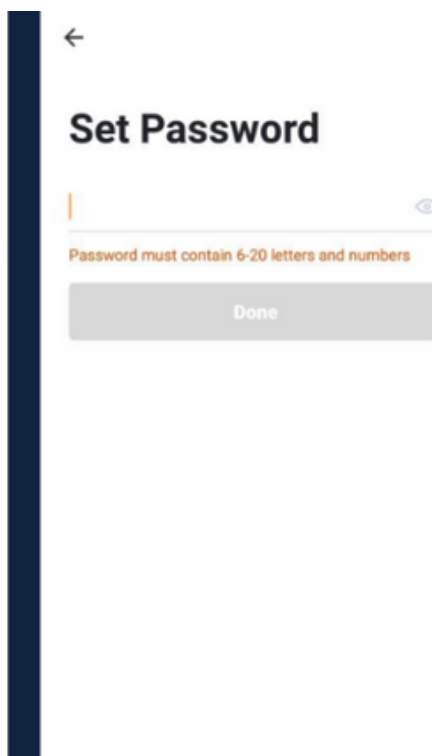
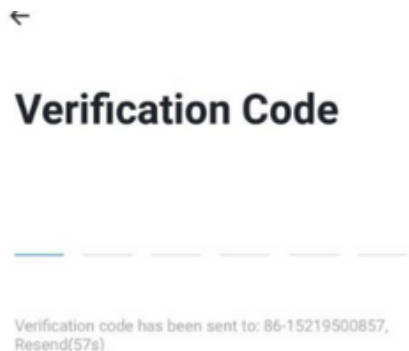
In case you have forgotten your password and need to reset it, please follow the steps below:

- On the Login Page, when prompted for your email & password, click “Forgot Password” button located below the “Login” button
- Select the country from which you will be using the device, usually the app will prompt it automatically





## 2. MOBILE APP CONNECTION



- You will be prompted to enter the email where a verification code will be sent and proceed to enter it on the app in the allotted time limit
- Once the verification code has been entered into the app, you will be asked to set your new password
- You will then have full access to the Tuya Smart Platform

In the case that you would like to change your password from the app, please follow the steps below:

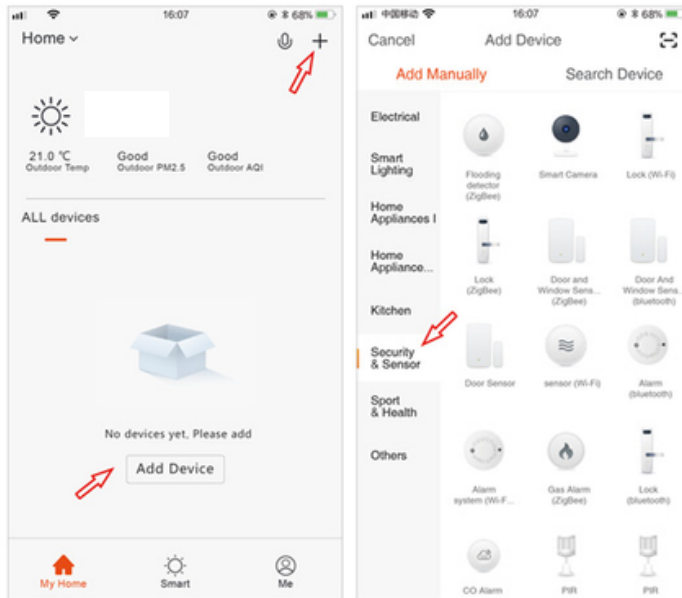
- Tap the 'Me' tab on the bottom right hand corner of your screen
- Click 'Change Login Password'
- You will be taken to the 'Account Verification' page and then tap 'Get Verification Code' button
- This will send a verification to your registered email
- Enter the code in the app
- Proceed to enter the new password

## 2. MOBILE APP CONNECTION



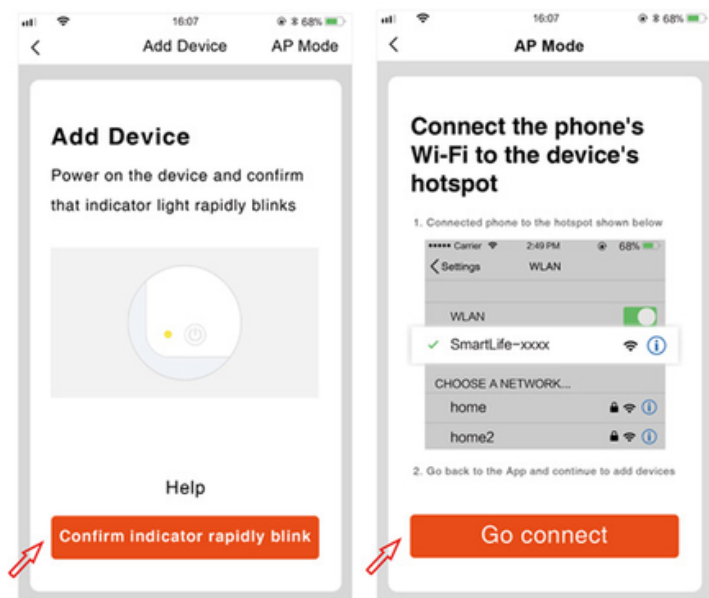
### d) Adding Devices

To add devices on the app, please follow the instructions below. Your devices and phone must be connected to the same Wi-Fi network in order for this to work.



- To add a device, click the 'Add Device' or tap the 'Plus' button on the top-right corner of your screen and select 'Add Device'
- Make sure to keep the device on and your mobile phone in close proximity

- Wait for the app to finish searching for the device until a successful message pops up.
- Finish adding your device. Once this has been done successfully, you can go on to control the device's functions via the mobile app.



Congratulations!

You have successfully set up your very own Smart Lightbulb  
Camera.

Thank you for being a valued customer of The Connected Shop.

[www.theconnectedshop.com](http://www.theconnectedshop.com)





# THE CONNECTED SHOP