



# The Operating System for Multi-day



[myodyssey.app](https://myodyssey.app)





# The Operating System for Multi-day Tourism

**Simplicity when you need it, great depth as you grow.**

Manage the complexities of multi-day tourism, ensuring your business operates seamlessly, without the hassle of spreadsheets or multiple apps

## One source of truth

Odyssey is a comprehensive solution built specifically for multi-day, multi-activity adventure tourism operators, whilst handling day activities with ease.

Odyssey brings your entire operation into one system, simplifying workflows and delivering professional customer communications. Ultimately putting you in a position to create more memorable experiences for your customers.

Odyssey makes it easier for multi-day tourism operators to get things right the first time, ensuring you can coordinate customers, activities, and resources eg staff, vehicles and equipment.



## No more missing data, duplication or errors

Whether you're making the move from siloed spreadsheets or stand alone apps, Odyssey brings all your data into a single view of Customer, Supplier and Logistics.

## Logistics challenges solved

Integrated field operations give your team in the field the knowledge they need to deliver the best customer experience.

## Next level communications

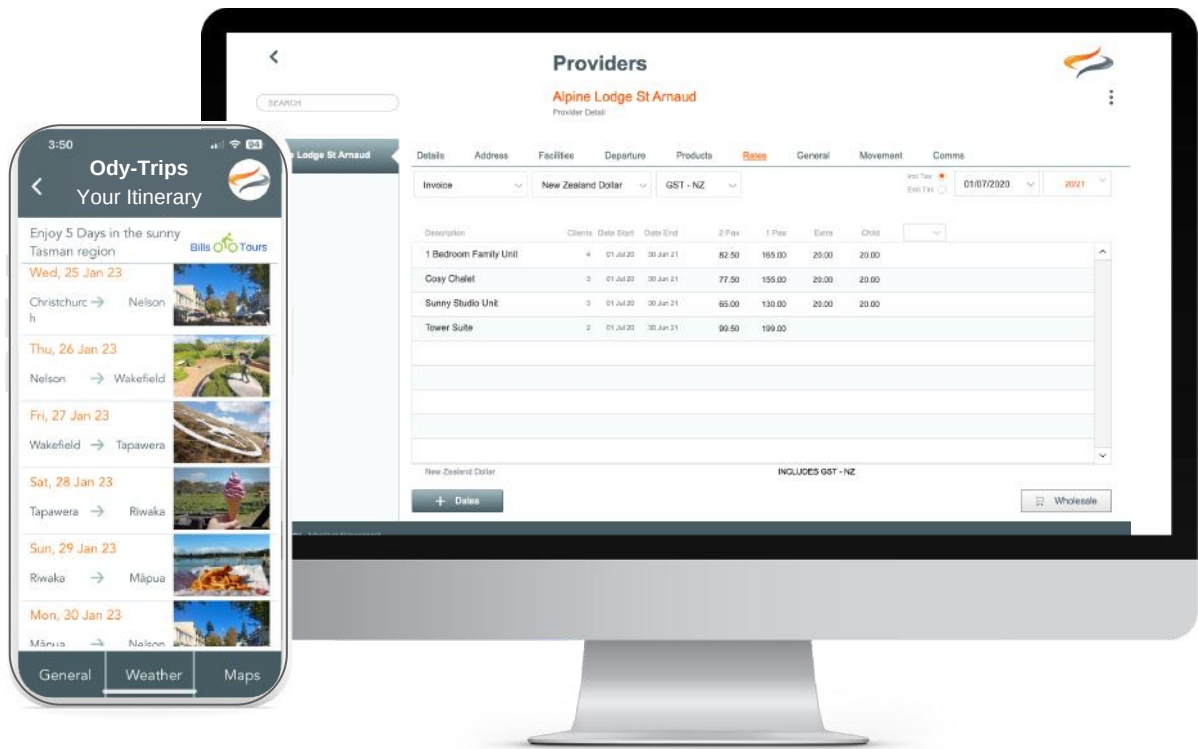
Generate communications in a single integrated system with workflows that deliver consistent and professional touch points, all with your own branding.

## Scale without additional resources

The operational efficiencies delivered by Odyssey will enable your business to add new itineraries, flexible tour types and handle higher customer volumes without increased staffing levels.

Every journey, every detail

More information:  
[myodyssey.app](https://myodyssey.app)



Born out of cycling and hiking tourism, Odyssey has created a comprehensive Tour Management system that adapts to your stage of business growth.

Core Functions	Advanced Modules
<ul style="list-style-type: none"> <li>• Manage Trip logistics</li> <li>• Customer Booking and Management</li> <li>• Manage Suppliers</li> <li>• Package/Product design</li> <li>• Operations management</li> <li>• Realtime dashboards</li> <li>• Integrate with key applications</li> </ul>	<ul style="list-style-type: none"> <li>• Advanced Email Integration</li> <li>• Xero Financial Integration</li> <li>• Luggage Labels</li> <li>• Mobile Itinerary app</li> <li>• Online Forms eg waivers &amp; agreements</li> <li>• Advanced Reporting</li> <li>• Inventory Management</li> <li>• Import online bookings</li> <li>• SMS texting</li> </ul>

## About Odyssey

Odyssey is built on 30-years of tourism experience and co-created with tourism operators. This puts us in a unique position to aid you in modernising your operations.

We believe the future for tourism is delivering memorable experiences. We aim to help operators be more agile and flexibly provide distinctive experiences.

## Contact

Tanya & Al Check  
[info@myodyssey.app](mailto:info@myodyssey.app)

Odyssey by:  
 Creative Technology NZ Limited  
 Nelson  
 New Zealand



# Odyssey Core

Included in all Odyssey Packages



## TOUR MANAGEMENT

- Guided or self-guided, Scheduled or Custom
- Basic Scheduling tools & Calendar management
- Task to-do dashboards
- Custom Transfer & Luggage run manifests
- Assign vehicles and guide resources
- Office, guide and depot notes, inclusions and briefing details
- Tour, Customer & Guide output reports eg customer details, bikes, departures, rooming lists
- Height to bike calculator
- Where are they now?



## CUSTOMER MANAGEMENT

- Individual or Group bookings
- Detailed finance options - organiser, payer, payment reminders
- Handles Enquiry, Booking, and Organising.
- CRM - Customer booking data profiles
- Customer resource data eg height to bike selections, accessories
- Templated Email Communications (automated or manual, branded, add documents, monitor or personalise) send from Odyssey
- Data connected across services eg Sales, Res, Ops, Admin etc
- Detailed PDF itinerary with imagery, supplier details, and more
- Luggage and transfer movements all at group or individual level



## SUPPLIER MANAGEMENT

- Comprehensive and centralised Supplier data system
- Templated Email Communications (automated or manual, branded, add documents, monitor or personalise) send from Odyssey
- Description, location and images pushed to itinerary and mobile app
- Ai itinerary text generation tools.
- Check availability of suppliers through their booking portal
- Supplier dashboard to monitor reservation status and readiness (configurable categories)
- Detailed room selection and rates
- Colour coded customer room sharing
- Manage rates & seasonal changes
- Auto pop up notes e.g closed on Mondays
- Multi-currency pricing
- Wholesale or retail rates - tax inclusive or exclusive

# Odyssey Core

Included in all Odyssey Packages



## PRODUCTS & PACKAGES

- Guided or Self-Guided, Custom or Scheduled
- Package pricing or 'build your own', with pricing overrides
- Direct or third party
- Master templates to create, clone or adjust products, packages and itineraries
- Dedicated enquiry dashboard
- Tour specific output documents
- Assign staff to tour design
- Add walk-in day bookings
- Reservation or Depot(?) dashboard views
- Transfer Services



## REPORTING

- Charting tools for month by month or cumulative views by trail and season
- Define and save (ad-hoc) data views per user
- Depot Daily view of tours
- Calendar views for tours



## SUPPORT

- Cloud Based
- Online manual with demo learn modules
- Assign different permission access for staff
- Configured to your business naming terms and brand.
- Change browser language to suit
- GDPR standard compliant
- Supported onboarding (Package specific)
- Consulting and Additional Services (additional costs apply)

# Packages

	Lite	Growth	Premium	Enterprise
	2 users Up to 500 pax	5 users Up to 2000 pax	10 users Up to 5000 pax	Talk to US 5000 + pax
<b>Add-Ons</b>				
Additional Users	-	●	●	●
<b>Advanced Modules</b>				
Customer Information Platform	-	●	●	●
Mobile Itinerary App	-	●	●	●
Inventory Management	-	●	●	●
Online Booking Imports	-	●	●	●
Luggage Label	-	●	●	●
Online Forms	-	●	●	●
Xero Financial Integration	-	●	●	●
SMS Texting	-	●	●	●
Advanced Scheduling	-	●	●	●
Advanced Data Analysis	-	●	●	●
Advanced Email Integration	●	●	●	●
<b>Core Products</b>				
Package/Product Design	●	●	●	●
Customer Bookings	●	●	●	●
Customer Management	●	●	●	●
Tours Dashboard	●	●	●	●
Provider Reservations	●	●	●	●
Tour Management	●	●	●	●
Itineraries	●	●	●	●
Operations Management	●	●	●	●
Adhoc Reporting	●	●	●	●
<b>User Support</b>	Email Support	Phone/ Email Support 48 Hrs	Phone/ Email Support 24 Hrs	Phone/ Email Support 24 Hrs
<b>Onboarding</b> On site training available (costs apply)	Self-Learning Modules  Online Help Manual	Tailored Learning Modules  Online Help Manual	Tailored Learning Modules  Online Help Manual	Tailored Learning Modules  Online Help Manual

● Included    ● Available    - Not available

# Odyssey LITE

Designed for Small Operators who require less features, but still need the seamlessness of Odyssey



## HOW WILL LITE BENEFIT YOU?

Odyssey LITE is designed for smaller operators who aspire to improve efficiencies and productivity in their Operating Systems.

Will suit you if you wish to ...

- Be more organised
- Move from spreadsheets
- Set up a 'fit for purpose' Operating System

## WHO IS LITE FOR?

- Up to 2 Users
- Up to 500 customers per annum
- Operators who are capable and motivated to self-learn

Additional features and Advanced Modules are available in other Odyssey Packages.

## WHAT'S INCLUDED

- Package/Product Design
- Customer Booking & Management
- Bookings Dashboard
- Trip Management
- Supplier Reservations
- Itineraries
- Operational reports
- Email Integration Advanced Module
- ... and more

## SUPPORT

- Online Help Manual
- Online Self Training Modules
- Ongoing email support
- 48 hr response time

# Advanced Modules

Our special sauce...  
You choose what's important  
to your business



## OUR ADVANCED SERVICES

- Designed to provide additional functionality
- Extend the core Odyssey product
- Add value to your business
- Can be added anytime
- Additional costs apply

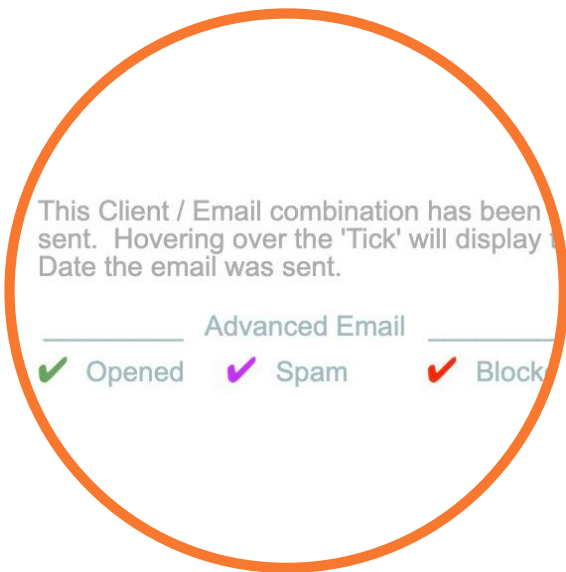




## Advanced Module

# Email Integration

Review and Monitor email activities while providing a personal touch to enhance your customers experience



### LIVE TRACKING



Live tracking of emails shows which have been opened, bounced etc.



### PERSONALISED



Modify email templates with client-by-client comments for that personal touch



# Advanced Module Data Analysis

## HOW WILL THIS BENEFIT YOU?

Avoid the limitations of set reporting.

Odyssey gives you the ability to control what data you want to see and how to see it.

Quickly save and share the output with others so they can have the same data sets eg Finance, Operations etc

## HOW DOES IT WORK?

Choose data from a range of fields eg whats on the X, Y axis.

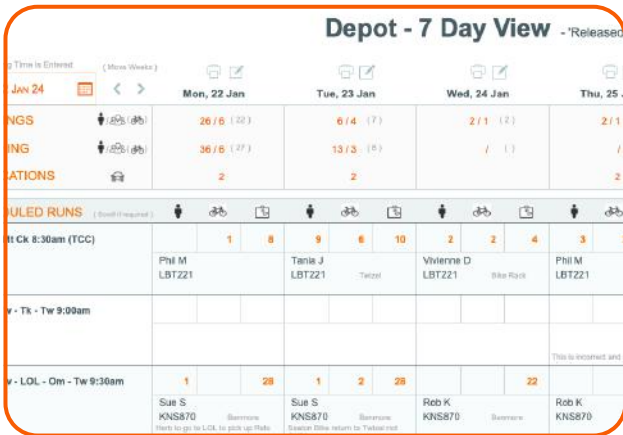
Decide how you want to view it eg graphed, heat maps, numerical tables, or export to excel

Save your personal query choices for repeat reporting.



# Advanced Module Advanced Scheduling

Manage scheduling & logistics of drivers, vehicles, trailers, luggage and bikes. This module is required if your customers need these services.



## LOGISTICS IN A GLANCE

Day by day, week by week, you can see exactly what's happening now, and in the future. Assign staff and vehicles.



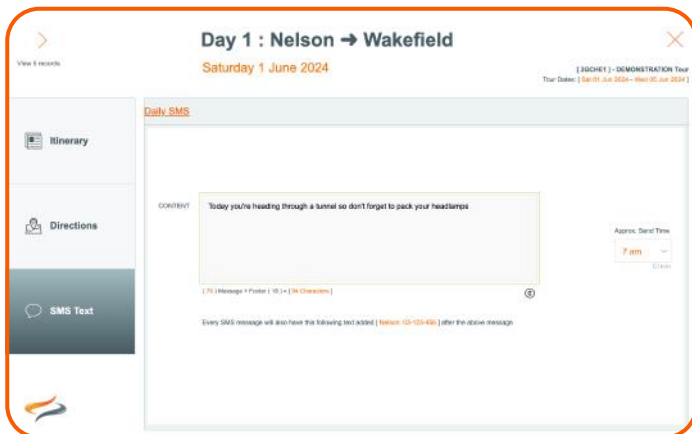
## OVERVIEW ROSTERING

Another option to schedule drivers, guides, or vehicles. Select interactive views and tailored outputs eg manifest reports, to enable smooth operations for all.




# Advanced Module SMS texting

Communicate direct with your customers before, during or after their tour or event. Set up automated texts inside Master templates, or send one-off texts as required.



## AUTOMATED TEXTS

Set up automated texts direct from Odyssey letting your customers know of things to consider eg 7am “*today you’re heading through a tunnel so don’t forget to pack your headlamps*”.



## ONE OFF ‘SPECIAL’ TEXTS



You need to get an urgent message out to all group members eg “*there’s a nasty weather front coming tomorrow*”, or “*this section of the trail is closed due to fire risk*”.





# Advanced Module Xero Integration



Integrate Odyssey with the industry leading cloud accountancy tool Xero.

## HOW WILL THIS BENEFIT YOU?

This integration enables you to sync relevant and appropriate details regarding your sales transactions and clients.

Remove double handling and implement efficient accounting practices.

## HOW DOES IT WORK?

Manually or automatically sync between Odyssey and Xero.

Online payments going into Xero can be 'picked up' by Odyssey.

Contact details entered into Odyssey can be pushed into Xero.

Client specific costs can be pushed into Xero using matching GL codes

✔ Sync client details

✔ Sync costs

✔ Sync payments



# Advanced Module

# Online Forms

## MODERNISE YOUR BUSINESS

---

### HOW WILL THIS BENEFIT YOU?

Ease the burdon on your staff, keep accurate and up to date records, and build stronger relationships with your Customers and Providers.

---

### HOW DOES IT WORK?

Customers can sign waivers, add height/sizes for equipment fitting, dietary requirements or health & fitness status direct via online forms.

Providers can confirm reservation status direct in response to your booking request.

## UPDATE DETAILS DIRECT

---

01

### Provide Access

Notify each client in a group by email giving them access to update their personal details online.

02

### Add Data

Customisable online forms means your Customers or Providers can update information quickly and easily.

03

### Update Direct

Client and Provider records are updated live and direct into Odyssey.



# Advanced Module Luggage Labels



## HOW WILL THIS BENEFIT YOU?

Having professional customer facing processes is critical to ensure your valued clients receive a quality experience.

And making it easy on your staff saving them significant time and effort, and reducing the risk of errors.

Your business brand will lift to another level.

## HOW DOES IT WORK?

- Two sided stick over label – Airline style
- Includes 2 small labels eg bike, kayak, helmet etc.
- Waterproof and weatherproof, very durable and suitable for outdoor use.
- Recommended Printer – Industrial style – GoDEX ZX400/400i (Optional wifi or USB connection versions).

Talk to us about for Printer and Label pricing and supplier details.



## SMOOTH TRANSFERS

Ensure your customers luggage is delivered to the right place at the right time. Reduce lost bags and support your delivery staff with a quality system.



## PROFESSIONAL BRANDING

Colour or B&W logo branding makes your business stand out. Showing your commitment to quality customer service.



## DURABLE

Made from waterproof and weather proof these labels are durable and suitable for outdoor use.

# Advanced Module Inventory Management

Select inventory to manage, view availability, eliminate double bookings, and manage pre & post requirements eg maintenance, cleaning or relocations.

e-Bike Low	150-154	ST/S17	<input type="checkbox"/>	+	+	+	+	+	+	+	+
e-Bike Low	150-154	ST/S18	<input type="checkbox"/>	+	+	+	+	+	+	+	+
<b>Small</b>	e-Bike	150-165	EES/S33	<input type="checkbox"/>	+	+	+	+	+	2GCJ2	+
	e-Bike	150-165	EES/S34	<input type="checkbox"/>	+	+	+	+	+	2GCJ2	+
	e-Bike	150-165	EES/S35	<input type="checkbox"/>	+	+	+	+	+	+	+
	e-Bike	150-165	EES/S36	<input type="checkbox"/>	+	+	+	+	+	2GCJ1	+
	e-Bike	150-165	EES/S37	<input type="checkbox"/>	+	+	+	+	+	2GCJ1	+
<b>Sm/Med</b>	e-Bike Low	155-167	ST/S20	<input type="checkbox"/>	+	+	+	+	+	+	+
	e-Bike Low	155-167	ST/S21	<input type="checkbox"/>	+	+	+	+	+	+	+
	e-Bike Low	155-167	ST/S22	<input type="checkbox"/>	+	+	+	+	+	+	+
	e-Bike Low	155-167	ST/S23	<input type="checkbox"/>	+	+	+	+	+	+	+
	e-Bike Low	155-167	ST/S24	<input type="checkbox"/>	+	+	+	+	+	+	+
	e-Bike Low	155-167	ST/S25	<input type="checkbox"/>	+	+	+	+	+	+	+



## ALLOCATIONS



Live track resources like bikes to manage there allocation eg view availability, eliminate double bookings


## INVENTORY



Manage inventory maintenance, cleaning or relocations.



- Details
- Notes



Description - 'Pre' use

●

Days 'Pre' use

Description - 'Post' use

●

Days 'Post' use



# Advanced Module Mobile app Ody Trips

## HOW WILL THIS BENEFIT YOU?

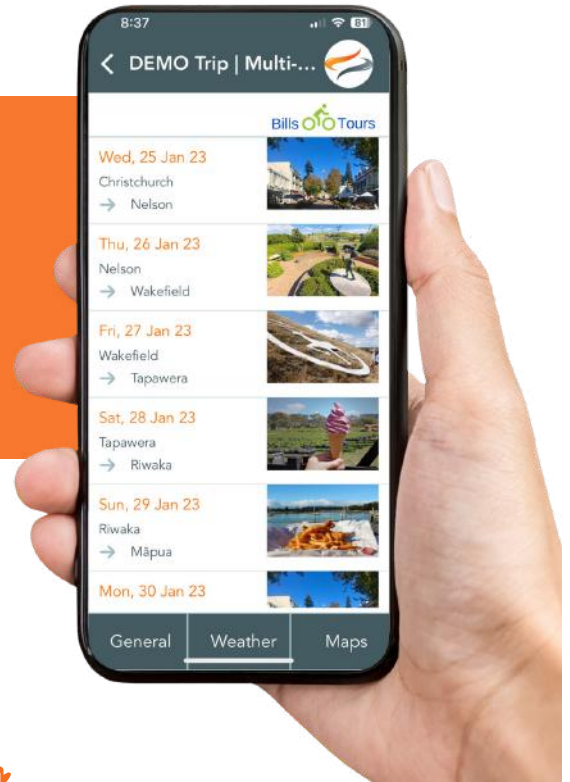
Provide your customers with a modern, easy to use mobile itinerary app. Plus, provide access to your 'secret sauce' information to enhance their experience.

Impress your customers with a professional, stylised and unique mobile app.

Great for self-guided trips, but also takes care of the information flow for guided trips too.

## HOW DOES IT WORK?

- Push data direct from Odyssey into the Ody Trips app.
- Set up individual trail 'Maps' and local 'Weather' forecasts.
- Choose Odysseys 'Customer Information Platform' option, set the General button up with all your company information eg how to change a tyre, contacts, daily trail details etc or...
- Direct the 'General' button to your website.



## MODERN APP

A 'fit for purpose' mobile itinerary for multi-day trips. Designed to replicate your customers itinerary and embed your companies 'special' information.



## PROFESSIONAL

Stand out from your competitors and deliver a complete and professional digital experience for your customers.



## CUSTOMER INFORMATION PLATFORM

Collate all your 'secret sauce' information in one place, fully accessible to customers on their mobile, or desktop, keeping them well informed.

Talk to us about our **Customer Information Platform** feature.

## Advanced Module

# Import Online bookings

## *Reduce Errors Improving Data Integrity*

### HOW WILL THIS BENEFIT YOU?

Significant streamlining of data entry.

Reduce errors improving data integrity.

Capture more than just a name and address - secure the booking while obtaining key information from your client at the start. Minimising the need to follow up.

### HOW DOES IT WORK?

Import bookings directly into Odyssey from a 3rd party eg: website booking form, using .xml format, or via API or webhook.

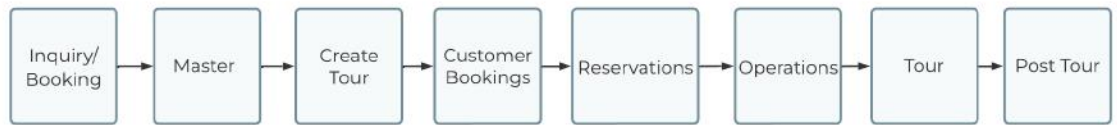
Working with your web designer or 3rd party, we will advise the structure and format of the output required.

Bookings are stored in a 'holding state' where staff can modify the booking prior to importing.

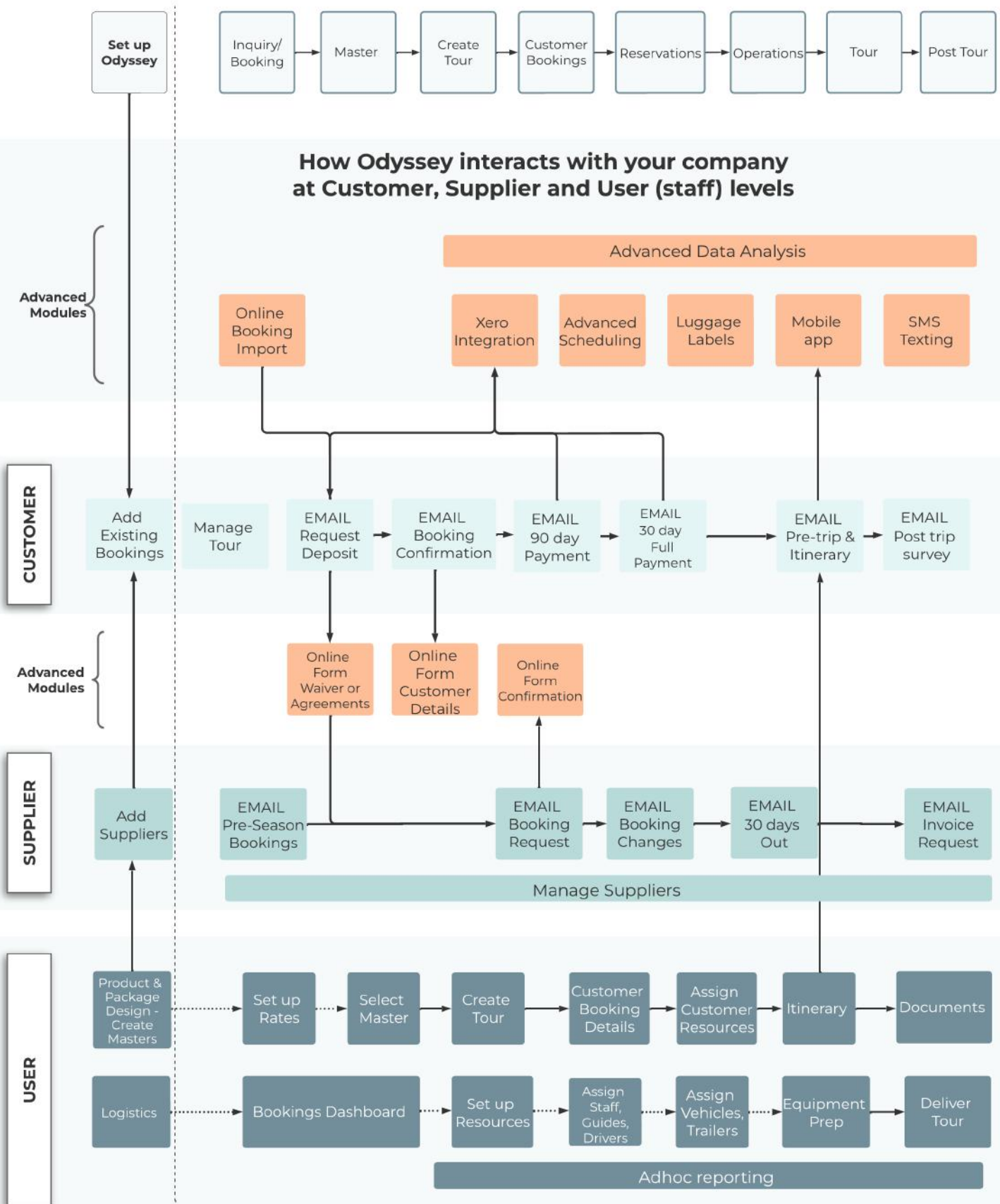


## Odyssey - User - Customer/Supplier

### The 'Workflow'



### How Odyssey interacts with your company at Customer, Supplier and User (staff) levels





# Advanced Module Pricing



Odyssey Advanced Modules are designed to provide additional functionality and value to your business. They extend the core Odyssey product and are able to be added at anytime for Growth and Premium Packages.

Costs for Advanced Modules are invoiced quarterly. All prices USD + local tax (if applicable) Refer to the left column for which modules are included in Packages.

Advanced Module	Description	Cost (USD + gst)
<b>Advanced Email Integration</b>  <i>Package incl in...</i> <ul style="list-style-type: none"> <li>• Lite</li> <li>• Growth</li> <li>• Premium</li> </ul>	<ul style="list-style-type: none"> <li>• Email remains one of the most ubiquitous and powerful communication tools to nurture leads, provide information to clients and coordinate services with providers. Our email integration ensures optimal benefits to your organisation.</li> <li>• Modify emails with client-by-client comments for that personal touch.</li> <li>• Live tracking of emails shows which have been opened, bounced etc.</li> </ul>	\$65 per mth
<b>Advanced Data Analysis</b>  <ul style="list-style-type: none"> <li>• Growth</li> <li>• Premium</li> </ul>	Pivot Tables: <ul style="list-style-type: none"> <li>• No more set reports - you control what data you want to see and how you want to see it.</li> <li>• Choose your data range fields, where to position them on what axis, then choose how you want to view it e.g.: graphs, heat maps, numerical tables or export to excel.</li> <li>• Then save and share the output with others so you're all viewing the same reporting.</li> </ul> Charting: <ul style="list-style-type: none"> <li>• Filter by Sales Type/s, Compare years – month by month</li> <li>• View Trends comparing Trails/Categories across years</li> </ul>	\$65 per mth
<b>Advanced Scheduling</b> <ul style="list-style-type: none"> <li>• Growth</li> <li>• Premium</li> </ul>	<ul style="list-style-type: none"> <li>• Manage scheduling &amp; logistics of drivers, vehicles, trailers, luggage and bikes. This module is required if your customers need these services.</li> <li>• Logistics at a glance: Day by day, week by week, you can see exactly what's happening now, and in the future. Assign staff and vehicles.</li> <li>• Overview Rostering: Another option to schedule drivers, guides, or vehicles. Select interactive views and tailored outputs eg manifest reports, to enable smooth operations for all.</li> </ul>	\$65 per mth
<b>SMS Texting</b>  <ul style="list-style-type: none"> <li>• Premium</li> </ul>	<ul style="list-style-type: none"> <li>• Odyssey also has SMS integration, so you can give <u>one way</u> updates about weather conditions, pickup changes, or to warn of new hazards such as a slip, flood warnings etc</li> </ul>	\$65 per mth  + provider usage costs
<b>Xero financial integration</b>  <ul style="list-style-type: none"> <li>• Premium</li> </ul>	<ul style="list-style-type: none"> <li>• Integrate Odyssey with the industry-leading cloud accountancy tool Xero. Sync clients, costs, and payments. Talk to us about integrations with Quick books</li> </ul>	\$65 per mth



<p><b>Online Forms – Waivers and Agreements</b></p> <ul style="list-style-type: none"> <li>• <i>Premium</i></li> </ul>	<ul style="list-style-type: none"> <li>• Odyssey’s integration with customisable online forms means your client or providers can update information directly into Odyssey</li> <li>• Notify each client in a group by email, giving them access to update their personal details online, including signing waivers, their height/size for equipment fitting, dietary restrictions, vaccination status, etc.</li> <li>• Providers can confirm the reservation status directly online into Odyssey, in response to receiving a booking request.</li> </ul>	<p>\$65 per mth</p>
<p><b>Luggage Labels</b></p>	<ul style="list-style-type: none"> <li>• When clients trust you with their luggage, it’s vital that it’s handled and moved with care and professionalism. When providing multi-day adventure packages, you need Odyssey’s airline-style luggage labels.</li> <li>• Branded with your logo.</li> <li>• Durable and weather resistant.</li> </ul>	<p>\$100 per mth <i>(excl printer &amp; label cost)</i></p>
<p><b>Online Booking Imports</b></p>	<ul style="list-style-type: none"> <li>• For scheduled or standard departures</li> <li>• Import bookings directly into Odyssey e.g. from a website.</li> <li>• Modify the client details prior to importing.</li> </ul>	<p>\$100 per mth</p>
<p><b>Inventory Management</b></p>	<ul style="list-style-type: none"> <li>• Manage inventory, view availability, eliminate double bookings, and manage pre &amp; post requirements eg: maintenance, cleaning or relocations.</li> <li>• Suitable for hire gear eg: bikes</li> </ul>	<p>\$100 per mth</p>
<p><b>Mobile Itinerary app</b></p> <p><i>+ Optional add on...</i></p> <p><b>Customer Information Platform</b></p>	<p>Customers expect trip information like their itinerary on their mobile.</p> <ul style="list-style-type: none"> <li>• ‘Ody Trips’ is a comprehensive mobile itinerary app showing customer specific itineraries that are synced and updated with Odyssey data. Includes customisable link buttons to...</li> <li>• Maps – you choose the link stored for the trail or route (<i>Talk to us about using Google Maps</i>)</li> <li>• Weather – you choose the link stored for the trail or route</li> <li>• General – link to your website home page or to Odyssey’s Customer Information Platform (<i>see below</i>)</li> </ul> <ul style="list-style-type: none"> <li>• Have all your company’s customer trip information in one place and accessible online, via the ‘General’ button of the app... Store each trail's day-to-day info, bike info eg: ‘how to fix a puncture’, FAQs, review links, contact info etc.</li> <li>• We manage the platform providing 9 categories and unlimited articles (<i>you provide the information</i>). This needs to be set up and configured within 60 days – then maintenance rates apply as required (<i>below</i>).</li> <li>• Maintenance - Add, modify or remove data etc</li> </ul>	<p>\$100 per mth + <b>\$1 x total customers (Intro offer For Year 1)</b></p> <p>Set up \$500</p> <p>\$65 per mth</p> <p>\$65 per hour <i>(minimum)</i></p>

All prices are current for a period of 30 days for presentation of this proposal.  
Terms and conditions as per the Odyssey SaaS agreement