



ICELAND AND THE COSMOS

A TOTAL SOLAR ECLIPSE AT SEA

Orbridge

CRUISE ABOARD SWAN HELLENIC'S EXCLUSIVELY
CHARTERED EXPEDITION SHIP SH VEGA

Dear Texas Ex,

Join us to witness the awe-inspiring path of totality during this 2026 solar eclipse luxury cruise along Iceland's western coast. This extraordinary voyage offers a front-row seat to one of nature's rarest spectacles, all while exploring Iceland's mesmerizing landscapes.

Unlike land-based viewing sites—which often draw large crowds for such a rare event—our exclusively chartered expedition ship offers a private, uninterrupted vantage point at sea. With nothing but sky and horizon surrounding you, experience the eclipse in peaceful seclusion, making this moment all the more profound and unforgettable.

With world-class accommodations aboard a state-of-the-art vessel, thrilling water and land excursions and expert-led presentations, this is a once-in-a-lifetime experience where celestial phenomena, adventure and refinement perfectly align.

The *SH Vega* will be your floating sanctuary and home away from home—providing unparalleled comfort and amenities. The five-star ship features an elegant Scandinavian design with the latest in cruising technology, including a PC5 ice-strengthened hull and extra-large stabilizers to make cruising as smooth as possible. The vessel also boasts a range of beautifully designed public areas where you can relax, socialize and embrace the journey. Onboard dining is a gourmet experience with a focus on fresh, locally sourced ingredients and international cuisine.

This outstanding itinerary is brought to you by the Texas Exes Flying Longhorns travel program, which supports the association's mission of promoting and protecting The University of Texas at Austin and uniting its alumni around the world. While you do not have to be an alumnus of UT to travel with us, we do ask that all Flying Longhorns travelers have an active membership in the Texas Exes. Memberships start at just \$50.

The association is a huge proponent of continuing education and there is no better classroom than our world. Experience stunning natural beauty and rich culture in the company of your fellow Longhorns! Are you ready for the adventure of a lifetime? We're standing by to answer all of your questions and/or take your reservation. Capacity is limited on this popular program and it may sell out quickly.

To secure your spot, please contact the Flying Longhorns travel office at 800-594-3900 or travel@texasexes.org with questions or to make a reservation.

Best regards,

Your Flying Longhorns Travel Team:
Margaret, Janice, and Alysha

Iceland and the Cosmos | Itinerary Highlights (subject to change)

Day 1 EN ROUTE FROM U.S.

1

Day 2 **ARRIVE IN KEFLAVÍK, ICELAND | REYKJAVÍK – EMBARKATION (R,D)** Upon arriving to Keflavik Airport an Orbridge representative will be waiting to assist with your transfer to the hospitality room in Reykjavik. En route to the vessel, enjoy a panoramic tour of the city driving past a variety of notable landmarks including Harpa concert hall and the iconic Hallgrímskirkja church. As embarkation begins take time to settle into your stateroom and become acquainted with the state-of-the-art *SH Vega*—your home away from home during this thrilling expedition. This evening gather with fellow travel companions for a special welcome reception and captain's gala dinner to celebrate the adventures to come.

Day 3 **ÍSAFJÖRÐUR (B,L,D)** Awake to remarkable scenery and crisp Nordic air. Gather for breakfast then disembark for Ísafjörður, a charming town nestled in the Westfjords with dramatic landscapes and a tranquil atmosphere. Visit the Ósvör Maritime Museum for a unique glimpse into the harsh and challenging lives of Icelandic fishermen in the 19th century. Explore Ósvör's extensive collection of fishing tools, gear and equipment that were essential to the daily lives of fishermen in the Westfjords. See old fishing nets, hand-carved wooden oars, harpoons and traditional clothing plus various navigational tools. Continue to the peaceful village of Bíldudalur. This small community, known for its diverse avian wildlife, was once a bustling fishing and trading hub. The town is also a gateway to our next destination—Dynjandi waterfall. Rugged cliffs, lush green moss and basalt rock formations create this awe-inspiring setting—a perfect backdrop for photographers. After lunch visit the Ísafjörður Museum, a captivating cultural and historical center housed in a meticulously preserved 18th-century building that was once a storehouse for the Danish trading company. Gain a fascinating glimpse into the maritime heritage and daily life of the Westfjords throughout history.

Day 4 **FLATEY (B,L,D)** Board a tender destined for Flatey for a self-guided walk to see the island's bird colonies. Approaching the rugged coastline the sounds of crashing waves and distinct calls of seabirds fill the air. Prepare for close encounters (at a respectable distance) with countless puffins and Arctic terns. After lunch there will be an option to return to Flatey to capture final photos. Alternatively embrace leisure time on the ship. Late afternoon enjoy a relaxing cruise towards Grundarfjörður.

Day 5 **ECLIPSE DAY | SAILING THE PATH OF TOTALITY (B,L,D)** As the ship is positioned strategically along the path of totality for unobstructed views of the sky, anticipation builds for today's celestial event. The captain and crew will provide updates on the eclipse's progress, and solar viewing glasses will be distributed. *(Eclipse viewing is entirely weather-dependent.)*

Day 6 **STYKKISHÓLMUR | SNÆFELLSNES PENINSULA (B,L,D)** Embark on an exciting boat ride through pristine Breidafjörður Bay where you'll partake in an unforgettable Icelandic sushi tasting experience. Savor the freshest flavors as you sample an array of scallops, sea urchins and other freshly caught shellfish straight from the sea. Return to the ship for lunch then depart for an afternoon excursion to the Snæfellsnes Peninsula, whose iconic Snæfellsjökull Glacier provided inspiration for Jules Verne's *Journey to the Center of the Earth*.

Day 7 **AKRANES | DEILDARTUNGUHVER | REYKJAVÍK (B,L,R,D)** Today's highlight features a visit to the Krauma Geothermal Baths with time to relax and rejuvenate. Fed by the Deildartunguhver hot spring, the most powerful in Europe, Krauma offers an unforgettable thermal bathing experience. Return to the ship for lunch and enjoy the afternoon sailing toward Reykjavik. Tonight gather for a lively farewell reception followed by a convivial gala dinner.

Day 8 **REYKJAVÍK – DISEMBARKATION | KEFLAVÍK | DEPART FOR U.S. (B)** After breakfast guests departing during the suggested times will take a complimentary transfer to the airport for flights home.

(B = Breakfast, L = Lunch, D = Dinner, R = Reception)



Activity Level: Activities include shore excursions and small boat cruises. Guests should be sure-footed on stairs and ramps, be able to walk or hike at least one mile on uneven and slippery terrain, and be comfortable landing on various terrain and boarding small vessels.

What's Included

- 6 nights aboard exclusively chartered, luxurious *SH Vega*
- All meals: 6 breakfasts, 5 lunches and 6 dinners (served with wine, beer or non-alcoholic beverages) plus special welcome and farewell receptions
- Private tours and special small-group excursions as noted in the 8-day itinerary
- Full guiding services of a team of Orbridge Expedition Leaders and expert local guides
- Private motor coach transportation
- Luggage portage
- Gratuities to ship crew, Orbridge Expedition Leaders, local guides, drivers, porters and wait staff for included meals
- Airport transfers for guests arriving and departing during the suggested times



Deck 3



Deck 4



Deck 5



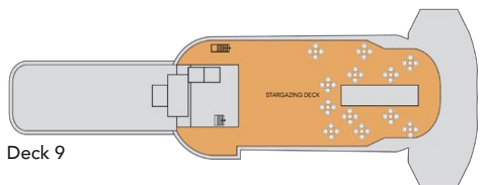
Deck 6



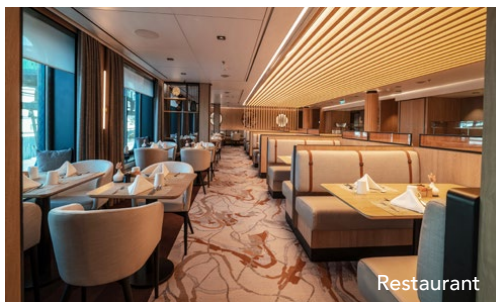
Deck 7



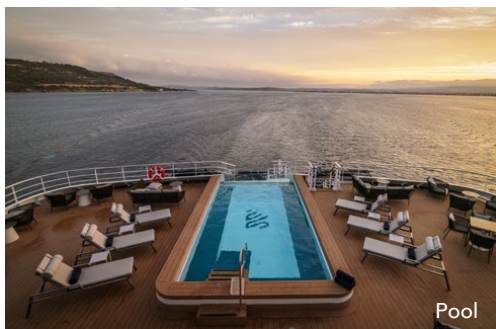
Deck 8



Deck 9



Restaurant



Pool



Club Lounge

Onboard SH Vega

Embark on an unparalleled journey of luxury and elegance aboard the SH Vega. From the moment you step on board, you'll be enveloped in an atmosphere of opulence and comfort.

Refined staterooms, each featuring ocean views, offer a serene retreat after the day's adventures. Inviting common spaces foster a sense of warm camaraderie among fellow travelers.

Indulge in gourmet dining that elevates every meal to an extraordinary culinary experience. The ship offers several dining venues to cater to different tastes and preferences.

The observation lounge offers floor-to-ceiling windows providing stunning panoramic views of the surrounding landscapes.



D4 Oceanview M4 Oceanview

One double or two single beds, living room area, private bathroom, and flame-effect fireplace. (approx. 215 sq.ft.)



D5 Balcony M5 Balcony

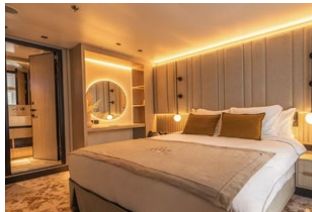
D6 Balcony

One double or two single beds, living room area, private bathroom, flame-effect fireplace, and private balcony. (approx. 269 sq.ft. with balcony approx. 54 sq. ft.)



Suite

King bed, living room, large private bathroom with separate bathtub and walk-in shower, flame-effect fireplace, and private balcony. (approx. 430 sq.ft. with balcony approx. 108 sq. ft.)



Premium Suite

King bed, walk-in wardrobe, living room, large private bathroom with separate bathtub and walk-in shower, flame-effect fireplace, and private balcony. (approx. 505 sq.ft. with balcony approx. 129 sq. ft.)



Optional Pre-Tour Reykjavík

Begin your adventure in Iceland's vibrant capital city rich with timeless traditions, intriguing history and colorful culture. Discover the area's Viking and maritime heritage during museum visits, and immerse yourself in the tranquil geothermal waters of the area's iconic lagoons.



Day +1 EN ROUTE FROM U.S.

Day +2 **ARRIVE IN KEFLAVÍK, ICELAND | REYKJAVÍK**
Upon arriving to Keflavik International Airport transfer to the Blue Lagoon for a unique geothermal spa experience. Next visit Hallgrímskirkja, one of Iceland's most iconic landmarks. This towering Lutheran church is renowned for its unique architectural design. Marvel at the magnificent pipe organ, designed by the German organ builder Johannes Klais, standing 49 feet tall with an impressive 5,275 pipes. Continue to the hotel for check-in and the remainder of the day at leisure.

Day +3 **REYKJAVÍK (B)** Meet a local guide for a comprehensive city tour. Venture inside Perlan, a natural history museum with exhibits showcasing Iceland's natural phenomena. Continue to the National Museum of Iceland, a treasure trove of artifacts and exhibits that chronicle Iceland's rich and complex history from the Viking Age to modern times. Conclude touring with an inside visit to Harpa, Reykjavik's stunning glass concert hall and cultural center. Enjoy the afternoon and evening at leisure to explore independently.

Day +4 **REYKJAVÍK | GOLDEN CIRCLE | MAIN PROGRAM BEGINS (B,L)** Following breakfast and check-out depart for a full-day Golden Circle excursion. This scenic route takes you through some of the country's most iconic natural and historical landmarks including Þingvellir National Park, Geysir Geothermal Area and Gullfoss Waterfall. Also stop at a local farm for a tour and delightful lunch. Later join guests arriving for the main program.

What's Included

- 2 nights hotel accommodations at Iceland Parliament Hotel (or similar)
- 2 breakfasts and 1 lunch
- Guided city and Golden Circle touring
- Entrance fees to Perlan Museum, National Museum and Harpa concert hall
- Luggage portage
- Guiding services of an Orbridge Travel Director
- Gratuities to Orbridge Travel Director, local guide, driver and porters
- Airport transfers for guests departing during the suggested times





AUGUST 8-15, 2026

Reykjavík Pre-Tour: August 6-9, 2026

RESERVE YOUR SPACE TODAY

Online: travel.texasexes.org

Phone: 800-594-3900


Stateroom Category	Standard Rate	Special Rate*
D4 Oceanview	\$9,999	\$9,495
M4 Oceanview	\$10,499	\$9,995
D5 Balcony	\$14,499	\$13,995
M5 Balcony	\$15,299	\$14,795
D6 Balcony	\$16,199	\$15,695
Suite	\$19,499	\$18,995
Premium Suite	\$21,499	\$20,995
Single D4 Oceanview	\$14,699	\$14,195
Single M4 Oceanview	\$15,499	\$14,995
Reykjavík Pre-Tour	Standard Rate	Special Rate*
Double	\$2,199	\$1,995
Single	\$2,999	\$2,795

DEPOSIT AMOUNT PER PERSON

\$500 pre-tour • \$2,500 main tour

*Special group rates; limited offer. All rates are per person in U.S. dollars based on double occupancy except where noted as Single. Single availability limited. Unless noted otherwise, airfare is not included. **An exclusive Early Booking Bonus, Expedition Libraries are curated collections of useful resources and background reading tailored to this program. Place your deposit on or before the specified date, and one Expedition Library per room will be sent after receipt of final payment. Libraries may be purchased; call for details. Full Terms & Conditions at terms.orbridge.com. Any payment to Orbridge, LLC constitutes your acceptance of the terms and conditions set out therein, including but not limited to the cancellation and refund terms.

CST#2098750-40 WST#602828994

 Orbridge takes seriously the responsibility to minimize our global environmental impact. Each year we plant 100,000 trees in U.S. State Forests with afforestation needs as an ongoing initiative among our evolving sustainability efforts. Learn more at orbridge.com/going-green.



ICELAND AND THE COSMOS

AUGUST 8-15, 2026

Special Alumni Rate:

Save more than \$1,000 per couple

30-day refund guarantee

FREE EXPEDITION LIBRARY
AN EXCLUSIVE EARLY
RESERVATION BONUS

Reserve by
May 31, 2025**

PRSRT STD
U.S. POSTAGE
PAID
PERMIT NO. 825
SAN DIEGO, CA

Final payment is due 90 days prior to departure, that is, on or before, May 10, 2026.

Membership in The Texas Exes is a requirement for all participants in the Flying Longhorns travel program. Alumni, friends of the University, UT faculty and staff, and parents of current UT students are welcome to join. Our dues are 80% tax-deductible and memberships start at just \$50.