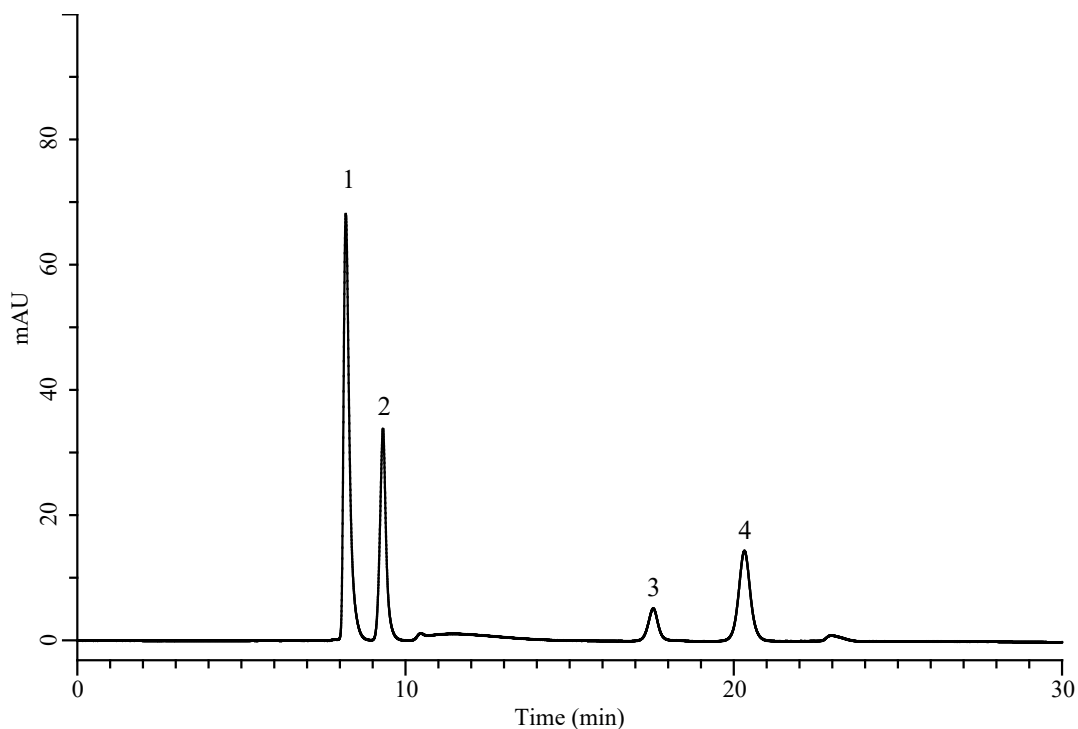


InertSearch™ for LC

Inertsil® Applications

Analysis of Chloroacetic acid

Data No. LB801-1027



Conditions

System : Chromaster HPLC system (HITACHI)
Column : InertSphere FA-1 (GL Sciences Inc.)
(9 μ m, 300 x 7.8 mm I.D.)
Column Cat. No. : 5020-11003
Eluent : 3 mM HClO₄ in H₂O
Flow Rate : 0.5 mL/min
Col. Temp. : 35 °C
Detection : UV 210 nm
Injection Vol. : 10 μ L
Sample : Standard

Analyte:

1.	Trichloroacetic acid	100 mg/L
2.	Dichloroacetic acid	100 mg/L
3.	Chloroacetic acid	100 mg/L
4.	Bromoacetic acid	100 mg/L