

Winchelsea Star

Price \$1

Your Weekly Community Newspaper

Since 1977

Vol 48 Ed 10

Tuesday 18 March 2025

winchelseastar.org.au

Winchelsea Primary School



FREE
Digital Subscription
Winchelsea Star
www.winchelseastar.org.au

Winchelsea Primary School Grade 5 and 6 students have been working on an art piece called 'Imaginary Flowers', inspired by artist Sandrine Pellissier and her book 'Painting Imaginary Flowers: Beautiful Blooms and Abstract Patterns in Mixed Media'. They have worked so hard on this project, and the end results are simply stunning.

GRANTS

NOW
OPEN

Open on 1 March
closes on 31 March

- Community Initiative Grants up to **\$5,000**
- Natural Environment Grants up to **\$8,000**

Scan the **QR code** to find out more or call grants team on **5261 0600** to discuss your idea and ask any questions.



surfcoast.vic.gov.au/Grants



Community Satisfaction Survey 2025

On Now



Random phone interviews with 600 Surf Coast Shire ratepayers are taking place until mid-March for the Local Government Community Satisfaction Survey.

The annual survey which takes about seven minutes to complete provides us with feedback to help understand community perceptions about council, and identify improvement opportunities.

The Local Government Community Satisfaction Survey is carried out by the Victorian Government.



WINCHELSEA GIRL GUIDES WELCOMES GIRLS 6-15 YRS

**Mondays, 4.30pm-6pm
at St John's Catholic Church
Winchelsea during school term.**

Guiding provides fun, friendship, and adventure. Developing teamwork, and leadership skills, whilst girls achieve goals, improve communities and grow in confidence.

If interested, girls can attend
3 FREE sessions
to come along and try.

Enquiries

Yvonne Orchard ph 0448 672 630 or
Lily Dell Rennie ph 0428 936 441

R.A.K. DAVIS & SONS

CARTAGE CONTRACTORS

WINCHELSEA

SUPPLIER OF ALL QUARRY MATERIALS, TRUCK HIRE

CARTAGE OF GRAIN, LIME, GYPSUM & SUPER

LANDSCAPE & GARDEN SUPPLIES

56 WILLIS ST, WINCHELSEA

Ph – 5267 2094

Ryan – 0438 672 281

email: rakdavissons@gmail.com



Winchelsea and District International Women's Day

Womens' Free Brunch

9.30-12pm Tuesday 18 March

The Hub, 70 Hopkins St, Winchelsea

Determination and Strength



Leah Alstin, 42, was diagnosed with Friedreich's Ataxia at the age of 17. Despite the challenges posed by this progressive condition, she remains indomitable and resilient balancing family life on her ongoing journey. Friedreich's Ataxia is a rare, inherited disease that affects the nervous system and causes movement problems.

"When I was 15, I started to 'slow down' when playing sport and at 17 I felt off balance when going downstairs so my Mum took

me to the doctor and the rest is history," says Leah.

Leah relies on a wheelchair and walking frame to navigate daily life. "While living with this condition has its challenges I don't let it define me. I remain determined and strong. I am married and a proud mother of two and find strength in my family and my journey," said Leah. "Every day is an opportunity to push forward with resilience and positivity."

Her unwavering and positive approach to life is a constant inspiration to those around her. Leah has over 4.2K followers on Instagram and as a FA Ambassador she is raising awareness and fundraising, providing advocacy and is a supporter of all things fara and FA. "It's been a long process but I feel I am finally at peace (kind of) with FA and life is so much easier. I am grateful for the lessons learnt along the way," concludes Leah

Leah Alsti is speaking at

Winchelsea's INTERNATIONAL WOMEN'S DAY CELEBRATION BRUNCH

**Tuesday 18 March 9.30 am to 12 noon
Eastern Reserve Winchelsea**

Two other business women will also be speaking about their journey through life.

**Get in quick to book your seat
as registrations are filling quickly.**



"You can have it all, just not at the same time."

Olivia Tipler graduated with a Bachelor of Business and Bachelor of Arts (Swinburne University & University of Florence) in 2000 and started work as a Business Analyst for Cisco Systems in Rome.

Olivia is an entrepreneur with a rare combination of creative and commercial skills, and a passion for developing big ideas that translate into concepts in both Australian and global markets.

Upon her return to Australia in 2004, she co-founded the iconic Australian lifestyle brand MOZI. Her extensive travels abroad, combined with the time spent at her parent's property in the Otways, provided the knowledge that there was a genuine gap in the Australian market for such a brand, and the inspiration for the brand's development. Sold to private equity 13 years ago, the MOZI brand was a vertically integrated (design to retail) lifestyle brand with a strong Australian footprint.



In 2015 Olivia, her partner and architect, Daryl Pelchen and their 3 children relocated from Melbourne to a farm in Modewarre where she established a red angus beef business and where the idea for CORA (Cape Otway Rd Australia) was conceived.

CORA will be the southern hemisphere's first destination to combine 'Centres of Excellence'

(CoE) in conservation, sustainability, sport, education, wellness and tourism. Nestled in the Surf Coast hinterland of Victoria and in close proximity to Melbourne and the iconic Great Ocean Road (Australia's most visited region), CORA's unrivalled location provides unique competitive advantages.

As Mona has been to Tasmania, CORA is set to become a Victorian and international destination, illuminating the coastal beauty, promoting the local region and sharing it with the world. Since the inception of CORA, baby number 4 arrived, she survived a pandemic home-schooling 3 children and dreamt up a new home wares brand that is currently being developed.

Often armed with a pair of secateurs, Olivia spends most weekends working in the garden in between the yoga sessions, children's sport and baking a scone or two. Amongst the chaos (and often frustration) of raising 4 children and working, Olivia has developed a new motto to live by: "You can have it all, just not at the same time".



BOGGED

Join us for a moving conversation with Mary Tuesday 18th March 6.30-8.30pm at the Winchelsea Shire Hall-- let's change the way we approach men's wellbeing.

IN WINCH

A Men's only Mental Health night with Mary O'Brien, the founder of 'Are you bogged mate' a movement aimed at helping connect country men with support services and break down the stigma associated with seeking help around mental health.

"After spending her whole life working in rural and remote Australia, Mary knows country blokes. She's worked with them, for them, and beside them and most importantly she knows how to talk to them. This unique perspective inspired the launch of Are you bogged mate?"



FREE to attend.
Nibbles and drinks provided.
Men only (this is at the request of the speaker for the benefit of the men attending) Bookings ensure catering needs are met

Tuesday March 18th
6:30pm - 8:30pm
Winchelsea Shire Hall

Bookings:

Scan the QR Code, phone 52672240 or email vitality@onebodychiropractic.com.au to book your (FREE) ticket! For you, and a mate!

Supported by Winchelsea Community House
+ "The Gentlemen of Geelong"



"I promise you there is always a way out of the bog hole and there are plenty of people ready to help you. Don't choose a permanent solution for a temporary problem. We have already lost too many good men".

©Mary O'Brien 2018



nab AFL Auskick

GOOD CLEAN FUN

PLAY.AFL/AUSKICK

Winchelsea

70 Hopkins Street

~Thursdays 5pm commencing 1st May 2025
Contact Colleen 0421210401

AFL PLAY

WINCHELSEA RE-LOVED MARKET

SUNDAY 23RD OF
MARCH 9AM - 2PM

**PRE-LOVED
CLOTHING,
HOMEWARES,
ANTIQUES,
BOOKS,
COLLECTABLES
AND SO MUCH
MORE!**

**GOLD COIN DONATION AT THE
DOOR**

WANT TO HAVE A STALL?

EMAIL: SHIREHALL@WINCHHOUSE.ORG.AU

Re-loved Market

Rhani Bayon, Shire Hall Coordinator

The fashion industry is one of the largest contributors to global carbon emissions, accounting for approximately 10% of the total, according to the United Nations Environment Programme (UNEP).

As we face the growing challenges of climate change, over-consumption and excessive waste it is important to consider the benefits of shopping second-hand. Reusing, Recycling and Repurposing clothing and other goods goes a long way in curbing our impacts on the planet.

Don't believe me? Jump online and Google 'Clothing beaches in Ghana, Africa' or watch the Netflix documentary 'Buy Now - The Shopping Conspiracy'. Purchasing second-hand items helps lower our overall carbon footprint.

The production of new clothing and homewares involves resource-intensive processes. Second-hand items require little to no additional resources making them far more environmentally friendly. By choosing to buy pre-loved items, you reduce demand for new items and help to extend the life of clothing and other goods.

The upcoming Winchelsea Re-Loved market has come from a genuine place of wanting to be part of our progression to lowering our impacts and carbon footprint. Small steps, Made by many, can create change. The Re-loved Market will not only provide a sustainable and cost-effective shopping option but also offer the opportunity for community connection and networking.

Beyond environmental benefits of shopping second hand are the financial benefits, high quality secondhand clothing can be purchased for a fraction of the original RRP.

So if you're free on Sunday the 23rd, come along and support the Shire Hall's second Re-Loved Market happening 9am - 2pm with Coffee and food available. Stall holder fees all go back into Winch House to support running costs and future community events and programs.



Getting to know our commUNITY:

Winchelsea and Surrounds

Haidee Benning

In 1901 records show there were only 446 residents in the 3241 postcode. By 1921, this had doubled to 838. Census and population data records that by 1975, the town had 1,278 people living in the region. From the 1970s to early 2000 the Winchelsea population varied between 1000-1756 people, a small and tight knit community with a strong focus on farming and primary production, and of course let's not forget the patriotic dedication of its locals to the towns football, netball, cricket, bowling, golfing and other recreational outlets!

In the last 10 – 20 years Winchelsea and the surrounding region has grown considerably with more and more people choosing to make this area home. From 2000 – 2024, our residents of 3241 postcode has grown to 7,145 (figures taken from last Census dated Nov 2024). As our population grows, so too does the need for services, infrastructure, and greater resources to support the town. We thought it would be a great idea to get to know the folk who call this region home and what their perspectives are on the ever evolving, growing and transforming place we call home.

Tell us about what brought you to Winchelsea? What do you love about living here? What matters most to you for the place you call home? What values and community based services are important for you and your families? What would your hopes, wishes and vision be for the future growth of our region? Are there any key topics you feel passionate about or are involved

with supporting in a community based context? (Please note, this is not a platform to air grievances or submit complaints or negative comments on community or town related issues. Should you have such concerns, please consider expressing them via a letter to the editor).

Each week, we would love to shine a brief spotlight on our local residents to share a little of the stories, lives, and vision of the wonderful people we have on our own back doorstep. Whether you have lived in the region all your life, or have just moved here in more recent years, please join us in celebrating the Unity within our fantastic and growing Community.

Allow our little local paper to share your skills and ideas about the town. Getting to know your neighbours and fellow townsfolk helps us all to foster strong and healthy friendships, support networks, and social opportunities. Do you have a small business in the area that we can all benefit from? Tell us about it! Do you have an interesting yarn to tell about the local region, events, opportunities, gatherings? Perhaps a story about the area's local History, present day, or future? We would love to hear about it! Whether you have lived here all your life or are new to the area, well look forward to introducing and meeting you! Please reach out to Haidee via moksha.vie@gmail.com if you would like to feature or nominate someone to feature in one of our upcoming issues.

This week's "Locals Spotlight":

Geoff and Yvonne Orchard Long-time residents of Winchelsea

Geoff was born and bred in Winchelsea. His original ancestors arrived here in the 1850s and had 16 children. Geoff is the only Orchard residing here now. His dad Neil and mum Phyllis (nee Parish) bought the farm 'Stoneleigh' on Swaby's Lane. They also purchased 'Glenallen' on Atkins road. Geoff grew up helping on the farm but he loved engines and eventually taught himself how to fix them. Geoff also learnt the art of shearing, and worked as a shearer around the district in season.

The shearing sheds are full of practical jokers, one he recalls is when a new 16yr old local lad was employed as a rouseabout, and just as he was about to pick up the fleece, the shearer yelled "Hang on I've lost the 'edge' off my cutter" and commenced looking through the fleece for it, helped by the new boy, and he also tricked the owner of the sheep who started looking as well, until he realised the joke! The owner wasn't very impressed and stormed out of the shed! Another time, a shearer went to use the toilet, and another shearer backed the tractor up close to the door so he couldn't get out!

Geoff also worked on various properties around Winch and had a short stint at Brockman's engineering works in Geelong along with harvesting Cottee's peas around Victoria. He eventually (1976) had a small engines shop in the Main St for 26yrs located where the pizza shop / Sandy's is today. Here he sold and serviced, lawnmowers, chainsaws, pumps etc.

Geoff and Yvonne also purchased a video franchise business, which after 4 years, an unscrupulous employee, sent them broke. In 2002 Knuckey's engineering came to the rescue, and gave



Geoff a job selling and servicing tractors until he retired in 2012. When Geoff was in the shop, a local chap came in for some fencing insulators, but he found he'd left his wallet at home. Geoff said not to worry, he could pay him next time he came in "Yes, I'm not leaving town" he replied. And a few hours later Geoff heard he'd collapsed and died! Well Geoff said "He was right, he hasn't left town"- he's buried in the Winch cemetery!

Geoff spent 34 years in the Fire brigade which he loved, and was Captain for 6 years, and helped when 'Ash Wednesday' devastated the Otway's. He also loves bowling (over 40 years), and has won club pairs tournaments three times, with various partners, and was runner up for club champion in 2022.

Geoff met Yvonne (Pierce, a Queenscliff girl) at the Leopold dance and they were married in 1969 when Yvonne came to teach in Winchelsea. They eventually had five beautiful daughters. No sooner did Yvonne arrive, she was snapped up by the local Guide Unit as a leader and has continued for the last 55 years, keeping Guiding alive in Winchelsea, with the help of many other dedicated ladies over the years.

One incident occurred with Pat Crosbie out in the Bambra bush, they had taken their small children with them, and Pat had strapped Andrew to her back and gone and hidden in the bush, the girls had the task of finding her, however, Andrew began to get restless and on taking him off her back she found he had a leech on his ear, thankfully it came off easily, but we certainly found out how much ears bleed, the old fashioned cloth nappies came in handy!

After leaving teaching to have two children, Yvonne also taught at the kinder for one year then left and had three more babies. Later she worked in the Occasional care Child Care at Winch House for about 17 years. Yvonne also regularly cared for Jenni Gregory's children and Haidee Benning's boys. Most of Yvonne's interests have centred around children and church- Play Group, Nursing Mothers group leader, Kinder committee, Sunday school, RE teaching, Youth group (ICYG), Paradise club/ WOW, Church Elder, Church secretary, Parents Club president (6 yrs), organised Carols by Candlelight by the river for 8 years, etc

Geoff and Yvonne both enjoy camping. The large orange 'circus' tent they took all the family in, has in more recent years been replaced by a caravan with all the mod cons so now they are 'glamping'! Their girls all try and join them at Easter somewhere in Vic (or SA) for a family get together. A tradition started back in 1982 when they joined an ex guiding friend's family at Easter in Daylesford every year for about 8 years. Then they started the tradition with their own family but change the venue, each year or two. Geoff pushed hard to establish the free camp on the Barwon for travellers, and to declare Winch an 'RV Friendly Town'.

When the school ran its music program under Brian Blackett, Geoff and Yvonne helped organise a number of "Band Fests" at Barwon Park and can remember the spine chilling finales with 30 odd bands playing in unison and a piper on the top balcony. Geoff and Yvonne both recommend getting involved in community organisations for the satisfaction it brings, and the community spirit it fosters.




Made for more purpose



At Victoria Police, you will enjoy a purposeful career making a real difference in your community. With more benefits including a generous starting salary, 9 weeks paid leave, and access to ongoing training and support. Start your career with Victoria Police today.

Authorised by the Victorian Government, 1 Treasury Place, Melbourne

SCAN ME





MADE FOR MORE



Winchelsea Projects Update

MARCH 2025



Greening and Stormwater Treatment Project



Concept sketch

A total of 33 trees will be planted Hesse and Armytage streets as part of a project which will green and cool residential streets and improve the quality of water running into the Barwon River.

Designs are complete for the Winchelsea Greening and Stormwater Treatment Project which will use stormwater for passive irrigation of the trees.

Passive irrigation uses gravity feed of stormwater into irrigation pipes and pits below the trees.

Use of the stormwater will reduce volumes and pollutant loads flowing into the Barwon River.

Twenty-one trees will be planted along Hesse Street and 12 along Armytage Street.

Council is now preparing to secure contractors for the project, with focus on sourcing sustainable materials from local suppliers where possible.

Work is expected to start mid-May.

Adventure Play Space set for opening



Kids and families can look forward to the exciting new Adventure Play Space opening for use during the week of 24 March.

Play equipment including elevated cubby pods is now installed, rubber matting and soft-fall surfaces laid, and hundreds of grasses, shrubs and trees have been planted in and around the play space and adjoining areas.

Final safety checks will be completed during the coming week.

Pollocksford Road Bridge

Structural engineers have confirmed that the Pollocksford Road Bridge deck can be replaced to allow its reopening.

A load limit of 20 tonnes will be in place on the repaired structure, which is the same as before the bridge was closed due to structural issues.

The limit will allow buses to use the bridge but trucks over the limit will need to use alternative routes.

Council is working on concept designs for the deck replacement and expects to award a works contract by the end of June.

Construction is expected to be complete by the end of the year.

Updates are provided via

surfcoast.vic.gov.au/PollocksfordRoadBridge.



surfcoast.vic.gov.au/winchprojects





March Council Meeting - Lorne



Surf Coast Shire Council will hold its March Council meeting at Stribling Reserve Pavilion in Lorne on Tuesday 25 March.

The venue will be open from 5.30pm, providing an opportunity to chat with councillors. Tea, coffee and light refreshments will be provided. Council meeting will commence at 6.00pm.

An agenda will be published online at surfcoast.vic.gov.au/CouncilMeetings on the Thursday prior to the meeting.

People can view the meeting via live streaming, which has captions, at <https://webcast.surfcoast.vic.gov.au>

Live streaming issues may arise at this venue. People will be able to access a recording of the meeting on our website the following day. The recording has captions and a transcript available.



Lorne Stribling Reserve Pavilion – 45 Otway Street, Lorne.



Water Supply Specialists

WATER SOLUTIONS

74 Dennis Street, Colac
5231 1861



ALL THINGS WATER:

- PUMPS • PIPES
- FITTINGS • TANKS
- POOL CHEMICALS
- IRRIGATION
- WATER PURIFICATION
- SOLAR • REPAIR

TREE WORKS & STUMP GRINDING



Fully insured and qualified
climbing arborists.

Slashing and fire preparation.

FREE QUOTES
0488 553 650
Mathieu Vaupres

www.colactrees.com.au



Letter to the Editor

Dear Editor,

Despite the high take-up of the Covid injections, new cases of covid remain high with some people still being admitted to hospital.

Data shows that some 84% of Australians have had two doses and some 68% of Victorians have received three doses (Boosters). Yet new cases of the virus are still high at around 3,182 new infections last week. Hospitalisation rates have also remained stubbornly high with despite over 71,000,000 doses being administered thus far. But why are new Covid infections still so high despite the high take up of injections?

It's interesting to note that NSW Health has been keeping data on covid deaths by vaccination status - going by NSW data, those who have received three doses constituted 52% of covid deaths, those that are fully "vaccinated" made up 30% of deaths, those with one dose 3%, compare this with those who did receive the jab and the figure drops to 14%.

72% of deaths occurred in those aged over 75 years with most having at least two co-morbidities. During the height of the pandemic deaths from Covid ranked 26 on the list of causes of death.

One could say that the so called Covid "vaccine" is a misnomer as it appears to be neither effective or safe as there have been over 136,000 'vaccine' injuries recorded in Australia to date. Why has the TGA not taken steps to withdraw the Covid jabs?

Thankfully Covid was nowhere as deadly as the Spanish flu which killed 10,000 Australians in first week when it arrived in 1918 (that's about 30,000 people in today's terms).

Alan Barron



Tough new bail laws

The State Government will introduce the toughest bail laws in Australia to prevent reoffending and keep Victorians safe. Premier Jacinta Allan, Attorney-General Sonya Kilkeny and Minister for Police Anthony Carabine today announced new *Tough Bail Laws* that will, in summary:

- Put community **safety above all** in bail decisions and remove the principle of remand as a 'last resort'.
- Create the **toughest bail laws ever** for serious offences – including a new bail test that is extremely hard to pass, targeting repeat offenders of the worst crimes.
- Ensure **respect for the rules** with new bail offences, including a second-strike rule for offenders.

The Government will start this work immediately by introducing the first *Tough Bail Bill* into Parliament next Tuesday. In addition, the Government will also ban machetes to crack down on knife crime. Machetes will become prohibited weapons, with exemptions to be available for legitimate use.

Tough Bail Laws

The number of youth offenders on remand has increased following changes in 2024 to target serious, repeat reoffending. But more changes are needed.

The current system is still not tough enough and does not reflect the expectations of victims or the public. The Government will make sweeping changes – not to punish people who haven't yet had their day in court, but to reduce the risk of someone on bail reoffending in the community.

Reoffending remains a serious problem. Males in their mid-to-late teens – both adults and youths – make up the most alleged aggravated burglary offenders by far, with 64 per cent under the age of 20. The *Tough Bail Laws* again squarely target the risks of these younger serious offenders.

The *Tough Bail Laws* will jolt the system - create new offences, change what decision-makers consider, and create the toughest bail test ever for the worst offences. The combination of these changes will make Victoria's bail laws the toughest in Australia.

Community safety above all

The *Tough Bail Laws* will make two big changes to bail decision-making principles to reduce the risk of reoffending and ensure the system meets community expectations.

- **Community safety comes first on all bail decisions:** Under the laws, community safety will become the overarching principle for bail decision-making for offenders of all ages. It will be a clear and unambiguous signal: community safety comes first in all considerations.
- **No longer needs to be a last resort to deny bail:** Right now, under section 3B of the Bail Act, an accused youth offender is remanded (detained in custody) only as a 'last resort'. The *Tough Bail Laws* will remove the principle of remand as last resort.

Toughest bail laws ever

A person accused of an indictable offence faces 'tests' to be granted bail. The tests get tougher as the offences get worse. A tough test applies for serious offences: someone accused of a Schedule 2 offence like manslaughter must show 'compelling

reasons' to justify bail. Someone accused of a Schedule 1 offence like murder or aggravated carjacking must prove even tougher 'exceptional circumstances'.

The *Tough Bail Laws* will elevate key offences into harsher bail tests, and create a new test to target repeat offenders of the worst crimes.

- **Tougher bail laws for serious, high-risk offences:** Many crimes that most Victorians would consider serious and high-risk do not face tougher bail tests, so bail is more likely. The *Tough Bail Laws* will uplift many offences like these so tougher bail tests will apply, and bail is less likely. Offences will include serious gun and arson offences, and other knife and weapon offences like machete violence. In addition, non-aggravated home invasion and carjacking offences will also face a tougher test for bail.
- **The toughest bail test ever:** To target repeat offenders of the worst crimes, the Government will create a new bail test extremely hard to pass. Under the new test, bail can't be granted to someone accused of committing a serious offence if they are already on bail for a similarly serious offence – unless there is a 'high degree of probability' they will not reoffend. This will apply to offences including murder and aggravated charges of home invasion, burglary and carjacking. A similar test recently introduced in NSW saw the number of people granted bail more than halve. Victoria's test goes further: it will apply to all ages and more offences.

Respect for the rules

Bail rules should not be broken. The *Tough Bail Laws* will restore respect for bail and its conditions – at all levels of offending and for all ages – with consequences for breaking the rules.

Consequences for breaking the rules: The *Tough Bail Laws* will introduce the offence of 'committing an indictable offence while on bail'. It will be subject to the second-strike rule. If you commit a second indictable offence while already on bail for an indictable offence, there are consequences – you will face the tough test of proving 'compelling reasons' for bail, like you would for a more serious crime. Appropriate safeguards and caveats will be developed to ensure proportionality.

To ensure bail conditions are respected, it will also become a summary offence to breach those conditions – like failing to report or meet curfew. This delivers consequences and can be considered by bail decision-makers as a reason to refuse bail, but it won't 'uplift' the accused to a tougher bail test. This reflects proportionality and the administrative nature of most breaches.

What else is underway

Machetes will be declared prohibited weapons in Victoria to crack down on knife crime. Strict exemptions will be available for legitimate use, and more details will be provided in the coming days.

The Government's Victoria Police pay rise offer backs frontline police and will help recruit more members to the force. The Government is also introducing electronic monitoring for young offenders, undertaking more intensive bail supervision, has created more pathways to get young offenders in jobs and support – and has allowed for more of them to get treatment and rehabilitation without prejudicing their case.

Winchelsea Star

Your Weekly Community Newspaper

Since 1977



National edeposit is designed for publishers



Audience reach

- Reach a wider audience with your edeposit through discovery services including Google, Trove and national, state and territory library catalogues
- Delivery of your edeposit to a wide range of digital devices



Access control

- Control where and when your edeposit may be viewed and reused by others
- Set conditions for access and reuse of your edeposit ranging from open use through to restricted access
- Your intellectual property and commercial interests are protected when you deposit with the National edeposit service



Preservation

- Your edeposit will be digitally preserved for the community and future generations to become an important part of Australia's memory

Did you know? Every publication is required by law to deposit a copy with the State Library (Libraries Act) and the National Library (Copyright Act) to capture and preserve the digital documentary history of Australia, for the benefit of all Australians. This is a joint system called NED (National eDeposit) and the Star has an account, to which our secretary, Tony Phelps uploads all our editions. The NED service provides for the deposit, management, storage, preservation, discovery and delivery of published electronic material across Australia.

This Week's Winchelsea Star

Editor - Yvonne Stevens
Designer - Susan Corby

Winchelsea Star Production Meeting @ Coffee Saturday 29 March 2025 9-10am

Winch locals are invited to come along to a coffee meeting on the last Saturday of each month @ Sweet Thyme, Winchelsea. Your comments or suggestions, feedback, ideas for stories or coming events are welcome - or simply to say Hi!

send your stories
news@winchelseastar.org.au

LOCAL NEWS and ARTICLES WELCOME

Include name and address of the sender
Email news@winchelseastar.org.au
Leave hard copy at IGA Supermarket

DEADLINE 5pm Fridays

4pm Sundays - hard copy articles left at IGA
6pm Sundays - sports results and weekend events

EDITOR 5273 0295 Leave a message

ADVERTISING

advertising@winchelseastar.org.au 5273 0294

free digital subscription
www.winchelseastar.org.au

JOIN US ON FACEBOOK

facebook.com/TheWinchelseaStar

production

Editors: Cerrie Forgan, Yvonne Stevens, Judy Cameron
Advertising: Sasha Gauntlett, Neil McInnes
Design: Susan Corby, Tony Phelps
Printed by: Winchelsea Community House
Website by: Winch Websites

committee

President: president@winchelseastar.org.au
Neil McInnes
Treasurer: treasurer@winchelseastar.org.au
Cathy Cheadle
Secretary: secretary@winchelseastar.org.au
Tony Phelps
Members: Mick O'Mara, Linda Carter, Susan Corby
Sasha Gauntlett, Judy Cameron,
Yvonne Stevens, Cerrie Forgan



© Winchelsea Star Org. Inc. All rights reserved
Winchelsea Star Organisation Inc.
Reg. No. A0053999F ABN 75 941 529 279
winchelseastar.org.au PO Box 5 Winchelsea 3241

Views expressed are not necessarily those of the Winchelsea Star or Committee. The Winchelsea Star reserves the right to edit or not publish any article.

Winchelsea Community Dinner

Celebrating the essence of community

Tara Quin

Mark your calendars for 29 March, as Winchelsea gears up for an evening of connection and celebration at the Community Dinner. This event is more than just a meal; it's a chance to weave the fabric of our community tighter, one story at a time.

The venue is St John the Baptist Catholic Church Hall, accessible via Harding Street. To keep the spirit of community alive, we're asking for a gold coin donation at the door to help cover costs and to give thanks to our gracious hosts.

Here's the twist – the dinner is a potluck! We invite you to bring your favourite dish, whether it's a family recipe or a local favourite or even something bought from your favourite store. Imagine the variety of flavours, each dish telling its own story, crafted with love by your neighbours. It's a culinary adventure that promises to delight your taste buds and spark conversations.

Long tables will be set up, creating a cozy, communal atmosphere. This setup encourages everyone to mingle, share stories, and make new friends. It's a perfect opportunity to break the ice and build connections that last beyond the evening.

To join this celebration of community spirit, simply RSVP on the event's Facebook page, by using the QR code below. Feel free to call or text if you don't use Facebook. Keep an eye out for more details in the shop windows of local businesses.



Don't miss out on this chance to be part of something special. The Winchelsea Community Dinner is set to become a beloved tradition, celebrating the essence of our town – its people.

If you have any questions, reach out via the Facebook page (scan the QR code for quick access) or contact Jess on 0409 536 752. We're also looking for sponsors and volunteers to make this and future events a success.

We can't wait to see you there, sharing in the laughter, the stories, and the delicious food that make Winchelsea such a wonderful place to call home.

6.30pm 29 March 2025

**St John the Baptist Catholic Church Hall,
5 Mercer Street,
accessible via Harding Street.**

**Bring a plate/gold coin/nothing.
Kids welcome. Alcohol free**

Enquiries Jess on 0409 536 752

**RSVP on the event's Facebook page
[https://www.facebook.com/
events/1268149947601233](https://www.facebook.com/events/1268149947601233),
by using this QR code.**



Importance of travel insurance

RACV

Before you set off on your next adventure, RACV reminds travellers of the crucial step in planning any trip: securing travel insurance. Travel insurance can offer a sense of security and reassurance, helping you enjoy your journey with added peace of mind. It's an option worth considering for many travellers.

RACV Travel Insurance Manager Judith Gamble said, "Many people book their holidays and then insurance is often forgotten about or an afterthought. RACV is encouraging everyone to consider purchasing travel insurance at the same time you book your travel, to help manage potential financial costs when unforeseen events occur."

"Having cover in place when you have paid for your trip should also cover any cancellation fees if you need to cancel due to an unexpected insured event."

RACV said there are some exclusions to travel insurance that you should be aware of when choosing a policy.

"Some of the exclusions to travel insurance cover may come as a surprise to people and COVID-19 is a good example, as some less expensive travel insurance may not cover you if you contract COVID-19 overseas," Ms Gamble said.

"RACV encourages everyone to read their policies to make sure they are informed and understand what the appropriate policy is for their circumstances."

 **THE WINCHELSEA STAR**

ALL WELCOME

ANNUAL GENERAL MEETING

 **DATE**
15 APRIL 2025

 **TIME**
AT 7 PM

 **PLACE**
WINCH HOUSE
(HELEN VERITY ROOM)

RSVP
secretary@winchelseastar.org.au



MRP Steelworx

Matthew Partridge
p 0418 672 334
[e mrpsteelworx@yahoo.com.au](mailto:mrpsteelworx@yahoo.com.au)

Welding Service

- Onsite welding
- Farm maintenance
- Farm machinery & equipment repairs
- Cattle & sheep yards
- Custom built trailers
- Supply & install gates

Winchelsea Churches



Winchelsea Uniting Church

0475 777 301

uca.winchelsea@gmail.com

Hesse St, Winchelsea 3241

Services 9.30am Sundays

St John the Baptist Catholic Church

Father Joseph Panackal

0404598558

Harding St, Winchelsea 3241

MASS 6pm Sat. MAR. 1, 8, 22, 29

St. Joseph's Parish

150 Th Anniversary Mass

Sunday March 16th

11am @ Meredith

All Welcome

St Thomas' Anglican Church

Rev'd Phil Jacobson

0477 672 042

stthomaswac@gmail.com

Barwon Tce, Winchelsea

Service 10am

Thought for the Week

"You will change your mind.

You will change your looks.

You will change your smile,

laugh, and your ways,

but no matter what you change,

you will always be you.

Have a blessed week."

John Bader,
Former U/C Accredited
Lay Preacher



Winchelsea Harvest's ★

GARDENERS MEET & PRODUCE SWAP

★ SECOND SUNDAY EACH MONTH ★

9-10AM

SWAP & SOCIALISE

BUILDING COMMUNITY

WHAT TO SWAP

HOME-GROWN PRODUCE,
COMPOST SUPPLIES, BAKED GOODS,
SEEDS, PRESERVES.

5 MAIN ST
WINCHELSEA

THE HOUSE NEXT TO THE BARWON HOTEL

FIND US ON INSTAGRAM & FACEBOOK

Winchelsea Harvest

Cancer Connection

Partnering with **Cancer Council**

Weekly group sessions connecting those impacted by cancer through promoting wellbeing, education, exercise and social support.

For those living with cancer, and for those caring for those living with cancer.

Share a cuppa and morning tea.

YOUR CARE PATH
Regional Care Partnerships - Chronic Conditions

To register your interest please contact:
Email: healthpromotion@hesse.vic.gov.au Phone: (03) 5267 1200

Introductory Session
Feb 27th & ongoing
Thursdays 10am-12pm

Hesse Rural Health
Community Building
8 Gosney St, Winchelsea

52672192 **R & K Creative Framing**

for all your framing needs

free quotes
pension discount
specialist in Age &
Disability Modifications

Ray & Kim Jansen
10 Witcombe st
Winchelsea 3241

Ray The Home
Maintenance HANDYMAN

0414672192

abn 47928623462

New screening test could improve detection of potentially fatal sleep disorder

Charles Darwin University (CDU)

Researchers from Charles Darwin University have developed a new technique to screen for the potentially fatal condition Obstructive Sleep Apnoea.

Obstructive Sleep Apnoea can lead to serious health problems including heart disease, stroke, diabetes and high blood pressure; and increased risk of car and workplace accidents. It is one of the most common forms of sleep disorder encountered, as high as 38% in the adult population.

The study's lead co-author, Professor Subash Heraganahally, said Obstructive Sleep Apnoea remains largely underdiagnosed. "In 2023, 80% GP attendances were 6-20-minute consultations, the time taken to fill questionnaires in a consultation is a barrier to assess for Obstructive Sleep Apnoea, let alone initiate specialist referrals or undergo a sleep study.

With an ageing population and increasing obesity in Australia, Professor Heraganahally explained the current screening tools, including the STOP-Bang and OSA-50, have age and gender bias.

Obstructive Sleep Apnoea is becoming more prevalent in younger individuals and women. "Some existing screening tools were developed for patients over 50 years and males, so new referral guidelines should be considered," he said.

The new General Practice Sleep Scale (GPSS) questionnaire features a broader scope of questions across age, sex and patient experience. The new test will increase accessibility, ease and accuracy - especially with patients able to complete the questionnaire in a waiting room prior to a clinical appointment.

The General Practice Sleep Scale (GPSS) was published in Sleep Medicine, journal of the World Sleep Society and International Paediatric Sleep Association.

The theme for this year's #WorldSleepDay (14 March) is 'Make Sleep Health a Priority.'



parkrun 54



15 March 2025

Trebeck Reserve, Winchelsea



On a cool but muggy morning 44 participants completed the parkrun course through Trebeck Reserve this week. We had visitors from Torquay, Yarra Valley and Geelong.

Ten people completed their personal best for Trebeck Reserve parkrun. Congratulations to: Thomas Gleeson, Jane Joreham, Mel Philpot, Rob Davies, Anthony Keogh, Annette Devereaux, Alette Rennie, Ray Farrell, Jess Driscoll and Georgie Thompson.

This event was made possible by the following volunteers: Ann Jones, Ann Morsby, David Woodall, Don Smith, Helen Woodall, Kate McInnes, Kristen Czerkiewicz, Murray Bennett, Neil McInnes. It takes a minimum of six people each week to safely conduct an enjoyable event. Please email trebeckreserve@parkrun.com if you are able to volunteer some of your time. Tasks are simple, sociable, fun and very much appreciated.

Further details of this week's results can be found at

trebeckreserveparkrun.com.au/results or check out our Facebook page for more photos and further information.

If you wish to join us any Saturday morning as a walker, runner or volunteer please complete the simple online registration at parkrun.com.au/register, this is free, only needs to be done once and can be used at any of the 5,000 plus parkrun events worldwide.

You do not need to be a runner, wear fancy Lycra or the latest high-tech shoes. Around one third of participants walk the course.

Well behaved dogs on a short hand held leash are welcome (no waist harnesses please).

parkrun was conducted at around 500 locations across Australia this week.



Permaculture at home:

Ways to incorporate sustainable practices

Rebekah Ellen

Winchelsea is the home for lots and lots of farms, self sufficient people, and people with chooks & Veggie gardens.

Although there is these people who have these self-sufficient practices on the property, there is also a percentage of people in town who buy everything from supermarkets in town, and of course our IGA.

There is so many things you can do at home to live more sustainably. Some of the practices at most environmentally friendly homes include: keeping a veggie garden, composting, keeping a worm farm, having a hot house, and raising chickens.

All of these are awesome ways to give back to the environment. For example a veggie garden can be all year round if you own a hot house, instead of buying various plants for the one season, with factors like snails, rats, animals in general like owning sheep, and weather of course. having chickens or sheep has its benefits.

Sheep manure can be great compost for the garden, and the same with chicken manure. Not to mention chickens also provide food (eggs) everyday!

- Raising chickens comes with a variety of benefits. Not only are they cute and fluffy companions that are perfect for cuddling, but they also brighten our mornings with delightful sunny-side-up eggs and fresh orange juice for breakfast. Chickens are an excellent source of protein, and in the garden, they happily munch on insects, helping to keep pests away. Their manure is highly nutrient-rich, which can fertilize the soil and encourage plant growth. In summary, chickens make fantastic pets.
- They also play a role in composting within the garden. In addition to being delightful (and adorable) companions, chickens can help you save money by decreasing the need to purchase eggs from the grocery store. Just imagine all the meals you can whip up with the eggs you gather, and there are endless delicious ways to enjoy eggs on toast!
- Growing a vegetable garden is quite akin to savoring the fresh eggs from your chickens. Once your crops are ready for harvest, you'll have a range of vegetables and fruits to cook with, significantly reducing your grocery costs on store-bought produce, which isn't always organic.

All these self-sufficiency efforts are interconnected; for example, having chickens provides compost for the garden, and worm juice is advantageous for plant growth. These factors are crucial when starting a vegetable garden from the ground up.

Once the growing season concludes and the vegetables have been picked, or if the garden becomes overwhelmed with weeds and pests, inviting sheep to graze on the leftovers can be an effective solution.



Pilot program helps farmers beef up carbon capture

Agriculture Victoria

Agriculture Victoria has partnered with South Gippsland farmers Jenny and Paul O'Sullivan of Malabar Farm near Walkerville to find profitable and sustainable ways to reduce emissions on their sheep and beef properties.

The O'Sullivans participated in Agriculture Victoria's On-Farm Emissions Action Plan Pilot, a program that helped nearly 250 farmers across the state understand and act on their greenhouse gas (GHG) emissions.

The Pilot was launched in 2022 under the Victorian Government's \$20 million Agriculture Sector Emissions Reduction Pledge that invested in flagship trials of leading research, and development of tools and services helping farmers to reduce emissions while maintaining productivity and profitability.

Agriculture Victoria Emissions Specialist Alison Kelly worked with the O'Sullivans to develop a customised on-farm emissions action plan to reduce their GHG and sequester and store carbon. 'Reducing emissions through efficient production and carbon storage is top of mind for farmers in this pilot like the O'Sullivans who are passionate about sustainable agriculture and climate adaptation,' Mrs Kelly said.

'Determining the environmental impact of your farm's production through a process called "Know Your Number" is now something that governments and the whole supply chain is increasingly demanding.'

As part of the program, Mrs Kelly worked with the O'Sullivans to determine their 'number', a net farm annual emissions footprint estimate, via an existing Greenhouse Gas Accounting Framework calculator for beef and sheep enterprises.

She said the O'Sullivans tailor made action plan helped them apply for a government grant to implement some of the opportunities from the plan such as:

- the establishment of a 1.7 km long and 10-metre-wide plantation, which will provide carbon sequestration, biodiversity and livestock shelter benefits.
- support to follow up on benchmark soil sampling to monitor changes in soil organic carbon levels across several paddocks and organic treatments using a blend of animal manure and chicken bedding litter.

As well as revegetation and land use improvements, the O'Sullivans continue to reduce their farm GHG emissions with a 7kW solar power system for their workshop, fences and pumps. They are also screening their bulls for feed conversion efficiency and hope to learn from feed additive research to see how they can apply benefits to their grazing operation to possibly further reduce emissions.

Read more about Agriculture Victoria's On-Farm Emission Action Plan online and other farmer case studies at agriculture.vic.gov.au/support-and-resources/case-studies/on-farm-emissions-case-studies



Winchelsea Community House Inc. A6247K
28 Hesse Street, PO BOX 75, WINCHELSEA, Vic. 3241
Phone: (03) 5267 2028 **Email:** manager@winchhouse.org.au
ABN: 48 932 340 254

COMMUNITY CO-WORKING & STUDY SPACE

9am - 2pm Mondays and Thursdays
\$10 Flat rate no subscription required.

Vinyasa Yoga

Tuesday evenings at 7pm

11th of Feb – 25th March

Join Kate for pose alignment, pranayama, meditation, yoga philosophy & mindful movement. 23 per class.

Winchelsea Knitting Group

Thursday Mornings 10.30 – 12pm

All welcome, Learn to knit or bring a project to work on whilst enjoying a cuppa and a chat at Winchelsea Community House.

Tai Chi

Fridays, 9.00am – 10.00am

In the Helen Verity Room,
Winchelsea community house

\$10 per session

Chatty Café

Fridays 10.30pm – 12.30pm

"Sip, Chat, Share, Care"

Everyone Welcome, Collection tin for donations.

Flow Yoga

Saturday mornings at 8am
8th of Feb – 29th March

An inclusive, all abilities class. Build strength, clarity and bliss as you move through a dynamic whole body experience. A playful, powerful class that leaves you feeling refreshed and uplifted. \$23 per class.

Crochet Group

1.30pm in the Winchelsea Community Centre

Every Second Saturday, next class April 5th

\$5 per class

Book your spot at reception@winchhouse.org.au

WINCHELSEA RE-LOVED MARKET

SUNDAY 23RD OF
MARCH 9AM - 2PM

PRE-LOVED
CLOTHING,
HOMEWARES,
ANTIQUES,
BOOKS,
COLLECTABLES
AND SO MUCH
MORE!

GOLD COIN DONATION AT THE
DOOR

WANT TO HAVE A STALL?

EMAIL: SHIREHALL@WINCHHOUSE.ORG.AU

2 x Toys for 2 weeks - \$2

No Subscription required.



Mon - Fri 9-2 at Winch House

Yoga at the Shire Hall

Online Feedback Survey:

<https://forms.gle/nPzfSumD1k8UiYeD7>



COMING EVENTS MARCH 2025

Winchelsea & District Womens' free Brunch
a celebration in honour of International Womens Day

When: Tuesday March 18th, 2025
Where: The Hub, Winchelsea
Time: 9.30 to 12pm
Guest speakers & brunch
Register ASAP as limited numbers

Scan QR to register here



Or register by emailing
Kelly.tumer@bendigoadelaide.com.au

Proudly supported by




WINCHELSEA RE-LOVED MARKET

SUNDAY 23RD OF MARCH 9AM - 2PM

PRE-LOVED CLOTHING, HOMEWARES, ANTIQUES, BOOKS, COLLECTABLES AND SO MUCH MORE!

GOLD COIN DONATION AT THE DOOR

WANT TO HAVE A STALL?
EMAIL: SHIREHALL@WINCHHOUSE.ORG.AU

BOGGED
Join us for a moving conversation with Mary Tuesday 18th
IN WINCH

A Men's only Mental Health night with Mary O'Brien, the founder of 'Are you bogged mate' a movement aimed at helping connect country men with support services and break down the stigma associated with seeking help around mental health.

"After spending her whole life working in rural and remote Australia, Mary knows country blokes. She's worked with them, for them, and beside them and most importantly she knows how to talk to them. This unique perspective inspired the launch of Are you bogged mate?"


FREE to attend. Nibbles and drinks provided. Men only (this is at the request of the speaker for the benefit of the men attending) Bookings ensure catering needs are met

Tuesday March 18th 6:30pm - 8:30pm
Winchelsea Shire Hall

Bookings: Scan the QR Code, phone 52672240 or email vitality@onebodychiropractic.com.au to book your (FREE) ticket! For you, and a mate!

Supported by Winchelsea Community House "The Gentlemen of Gentling"

"I promise you there is always a way out of the log hole and there are plenty of people ready to help you. Don't choose a permanent solution for a temporary problem. We have already lost too many good men"




WINCHELSEA COMMUNITY DINNER

6.30pm 29 March 2025

St John the Baptist Catholic Church Hall, 5 Mercer Street, accessible via Harding Street.

Bring a plate/gold coin/nothing. Kids welcome. Alcohol free

Enquiries Jess on 0409 536 752

RSVP on the event's Facebook page
<https://www.facebook.com/>



BACK TO BACK 2025

Get behind 3 Victorian teams as they shear, spin and knit a jumper in the fastest time.

It's slow clothing sped up!

Watch a woolly jumper materialise in front of your eyes!

SATURDAY 29 MARCH 2025
TARNDWARNCOURT HOMESTEAD
5459 PRINCES HWY, WARNCOURT, VICTORIA
8:00AM TO LATE

Food. Bar. Market Stalls. Yarn Shop. Raffles. Hands-on activities.

Gold coin entry.
www.tarndie.com/tarndie-back-to-back-2025
Phone 0480 080 248

Raising funds for:



SCAN ME!

27TH ANNUAL DEANS MARSH FESTIVAL

SUNDAY 30 MARCH 2025 | 10AM - 3PM

DEANS MARSH MEMORIAL RESERVE | 10 PENNYROYAL VALLEY ROAD, DEANS MARSH

MARKET STALLS | VINTAGE TRACTORS & CARS | DOG JUMP COMP. | FOOD & BAR
FREE WILDLIFE INTERACTIVE DISPLAY | FREE FACE PAINTING | TRADITIONAL CRAFTS
ART EXHIBITION | DEANS MARSH GIFT | BIRD CALLING COMP & MORE
PLUS LIVE MUSIC ALL DAY SUPPORTED BY FREEZA - SURFCOAST YOUTH!

GOLD COIN DONATION AT ENTRY TO SUPPORT DEANS MARSH CFA + COTTAGE!

DEANSMARSHCOTTAGE.ORG.AU



Logos: The Cottage, Bendigo Bank, Community Bank, Surfcoast Events, Freeza Victoria

When your children go online - they have left the house

If the Young People in your world are:

- Using online platforms
- Gaming with friends
- Using chat/messenger functions
- Keen to have their own youtube channels
- Asking for personal devices & eager to access more online platforms

DIGITAL TATTOO

Supporting Children as we introduce them to the world via the Internet, social media/chat platforms and gaming is very much a conversation about relationships not the tech itself.

This workshop is for:

- parents and carers of primary aged students
- aims to complement information delivered by Vic Police and e-safety

Digital Tattoo focuses on how:

- Young People interact with each other
- parents and carers can create ongoing conversations that mirror their own family values
- we can support Young People as they grow in their online worlds
- families can create meaningful conversations about their families online footprints

Tuesday: 6.00 - 8.00pm
18 March 2025

Winchelsea Primary School

batforce www.batforce.org.au






Winchelsea Star COMMUNITY NOTICEBOARD

email editor@winchelseastar.org.au or leave at Winchelsea IGA

WINCHELSEA TENNIS CLUB

JUNIOR COACHING

Mondays from 3.30pm
with experienced Nicole Mullen, \$10

SOCIAL TWILIGHT TENNIS

Monday evenings from 6.00pm.
All Welcome!

RUNNING GROUP

Did you know Winchelsea has a small run group? We all start our watches but we're not worried about personal best. Its more of a social run, jog and chat. We wait for slower runners and walk when one of us needs a rest. The aim is 10k with the option of 8 or 5k it's up to you. To finish off we have a coffee at La Hoot.
**Join us each Sunday morning 8am
Meet at La Hoot.**

LIONS CLUB

Environmentally friendly
compressed paper bricks for your fire.
Save on the rising cost of wood.
Pack 4 bricks \$5 - Roll small rolls \$2
Contact Alan 0476 475 422

WINCHELSEA PICKLEBALL

Winchelsea Leisure Time Centre
Wed 7-830pm or Thurs 10-11.30am.
All equipment supplied,
wear suitable footwear.
Lesley Mathison 0438 672 197

CUBS AND JOEYS

For information, or to get involved,
contact Marie McPadden – 0409330147
or mcpadden630@bigpond.com

DIAMOND DOT DAY SATURDAY 5 APRIL

11.00-400pm

Senior Citizens, Harding St Winchelsea
\$10 entry incl lunch, afternoon tea
Diamond dot is like doing a painting. but
you use beads instead of paint. We do
have a few kits for sale.
New members welcome - See you there
Tracey 0427500649



BRIDGE

Social Bridge is played
TUESDAYS 10 AM - 12 NOON
Senior Citizens Centre
36 Harding Street Winchelsea
New players always welcome
Elaine Atkinson 0458 009 616

GEESE FREE TO A GOOD HOME

Contact Judy 0409 417 562

Posted 11/3/25

HELP NEEDED PLEASE

Someone wanted to assemble
an adult tricycle Please contact Grant
Elsbury 5267672051
Posted 18/3/25

Winchelsea Star CLASSIFIED ADS

email editor@winchelseastar.org.au or
leave at Winchelsea IGA
Notices removed after 2 weeks



Winchelsea Taxis is now Surfcoast Taxis

Our fleet of vehicles are growing to all late models and we are covering
an extended area including Winchelsea, Colac, Bannockburn, Inverleigh,
Great Ocean Road and Geelong.

We have a fleet of 10 seater Maxi Vans, all with capacity to carry wheelchairs.

Surfcoast Taxis Pty Ltd
All Bookings: 0408 325 992
Fax: 5267 2699
Email: bannotaxis@gmail.com
(Admin or Stan 0429 672 888)
66A Batson Street
Winchelsea 3241



Accounts NDIS provider. TAC, DVA etc

NDIS provider number 4050001044
NDIS provider number 4050001048



FOUND BLACK CHOOK

Wandering on Napthine Walk.
If you are missing this chook
please ring David on 0488165109
to arrange pickup.
I have the chook penned up
at the moment.

Posted 11/3/25

FREE 5.5KG SOLT TOP LOAD WASHING MACHINE

Need gone.
Bought a bigger machine VGC.
Phone John. 0438396492

Posted 18/3/25



Bags of rubbish don't belong in your recycling bin.

The bags tear open and spill rubbish onto the recycling, which stops some items from being recycled.

Put bags of rubbish in your red-lid landfill bin instead.

Visit surfcoast.vic.gov.au/recycling to find out more.





The Climate Report

Judy Cameron

Two major studies agree earth is entering frightening new climate phase

Andrew King, Associate Professor in Climate Science, ARC Centre of Excellence for 21st Century Weather, University of Melbourne and Liam Cassidy, PhD Candidate, University of Melbourne

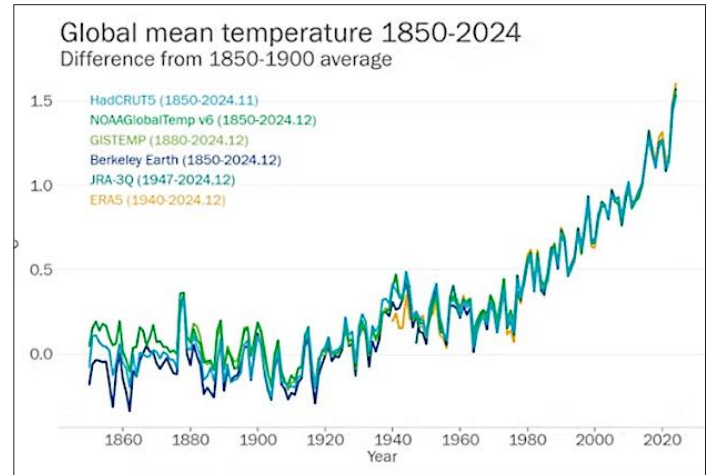
Earth is crossing the threshold of 1.5°C of global warming, according to two major global studies which together suggest the planet's climate has likely entered a frightening new phase.

Under the 2015 Paris Agreement on climate change, humanity is seeking to reduce greenhouse gas emissions and keep planetary heating to no more than 1.5°C above the pre-industrial average. In 2024, temperatures on Earth surpassed that limit.

But the two papers just released use a different measure. Both examined historical climate data to determine whether very hot years in the recent past were a sign that a future, long-term warming threshold would be breached.

The answer, alarmingly, was yes. The researchers say the record-hot 2024 indicates Earth is passing the 1.5°C limit, beyond which scientists predict catastrophic harm to the natural systems that support life on Earth.

Climate organisations around the world agree last year was the hottest on record. The global average temperature in 2024 was about 1.6°C above the average temperatures in the late-19th



century, before humans started burning fossil fuels at large scale. Given these findings, what humanity does next is crucial.

For decades, climate scientists have warned burning fossil fuels for energy releases carbon dioxide and other gases that are warming the planet. But humanity's greenhouse gas emissions have continued to increase. Since the Intergovernmental Panel on Climate Change released its first report in 1990, the world's annual carbon dioxide emissions have risen about 50%. Put simply, we are not even moving in the right direction, let alone at the required pace.

The science shows greenhouse gas emissions must reach net-zero to end global warming. Even then, some aspects of the climate will continue to change for many centuries, because some regional warming, especially in the oceans, is already locked in and irreversible.

If Earth has indeed already crossed the 1.5°C mark, and humanity wants to get below the threshold again, we will need to cool the planet by reaching "net-negative emissions" – removing more greenhouse gases from the atmosphere than we emit. This would be a highly challenging task.

The damaging effects of climate change are already being felt across the globe. The harm will be even worse for future generations.

Australia has already experienced 1.5°C of warming, on average, since 1910. Our unique ecosystems, such as the Great Barrier Reef, are already suffering because of this warming. Our oceans are hotter and seas are rising, hammering our coastlines and threatening marine life. Bushfires and extreme weather, especially heatwaves, are becoming more frequent and severe. This puts pressure on nature, society and our economy.

But amid the gloom, there are signs of progress. Across the world, renewable electricity generation is growing. Fossil fuel use has dropped in many countries. Technological developments are slowing emissions growth in polluting industries such as aviation and construction.

But clearly, there is much more work to be done.

Humanity can turn the tide

A major shift is also needed to decarbonise our societies and economies. There is still room for hope, but we must not delay action. Otherwise, humanity will keep warming the planet and causing further damage.

When your children go online – they have left the house

If the Young People in your world are:

- Using online platforms
- Gaming with friends
- Using chat /messenger functions
- Keen to have their own youtube channels
- Asking for personal devices & eager to access more online platforms



This session is for you!

DIGITAL TATTOO

Supporting Children as we introduce them to the world via the internet, social media/chat platforms and gaming is very much a conversation about relationships not the tech itself.

This workshop is for:

- parents and carers of primary aged students
- aims to complement information delivered by Vic Police and e-safety

Digital Tattoo focuses on how:

- Young People interact with each other
- parents and carers can create ongoing conversations that mirror their own family values
- we can support Young People as they grow in their online worlds
- families can create meaningful conversations about their families online footprints

Tuesday: 6.00 – 8.00pm
18 March 2025



Winchelsea
Primary School

batforce
BARROW ADOLESCENT TASK FORCE

www.batforce.org.au





5234 6585 0417 385 984

*For all your septic tank, grease traps
and interceptor pits servicing.
Locally owned and operated*

WINCH WEBSITES
WEB SOLUTIONS SIMPLIFIED.

WEBSITES

**GROW business
INCREASE reach
SAVE time**



Find out what a website
could do for you
winchwebsites.com.au
04 887766 20

Water Delivery



WAZZA'S
WATER CARTAGE

*Stainless Tanker Up to 22,000 ltr loads
Barwon Water Registered*

Domestic & Rural Water Supplies

Call Wazza

Mob: 0428 877 260

Email: wazza@wazzas.com.au Web: wazzaswater.com

Knuckey's Winchelsea

Ph: 5267 2011

Knuckey's have in stock a complete
range of batteries to suit tractor,
heavy machinery, cars, utes

The largest range of the best oil for
your vehicles—**CASTROL**—
'when only the best will do'

The largest range of V belts.
A, B, C, D M Sections
Bolts and nuts for all occasions
Steel cut to size

**OZ TREES NURSERY
& TREE PLANTING SERVICES**

- Affordable seedlings—over 200 species
 - Complete plantation service—farm forestry, shelter, aesthetics
 - Deep ripping & mound ploughing. Rotary bed forming
 - Our experienced staff will help you select species for your site conditions and needs
- Also available—tree planting tools, milk cartons, plastic tree guards & bamboo stakes



569 Warrowie Rd. Colac
P: 5233 6280 F: 5233 6393
E: info@oztrees.com.au
W: www.oztrees.com.au
Open Monday—Friday
9am—4:30pm

Phone OzTrees for professional advice,



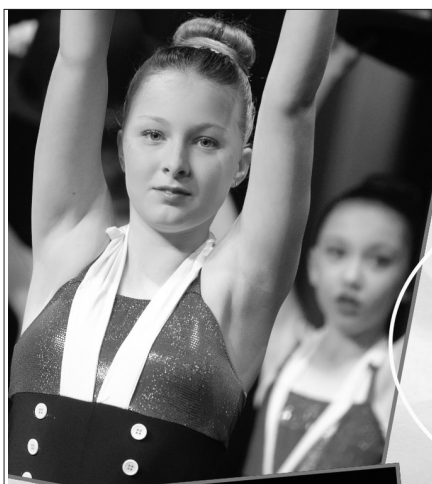
mainly music
est. 1990

**Fun, Interactive music sessions for
pre-school children (0-4 y.o.) and
parents/caregivers**

When: Mondays from 10 to 11 am
(runs during school terms)

Where: St Thomas' Hall
25 Barwon Tce.

To Enquire ring: 0407838256



**DANCE
CLASSES**

**TAKING ENROLMENTS NOW
FOR OUR WINCHELSEA STUDIO**

**PRE-SCHOOLERS - ADULTS
CONTROLLED CLASS SIZES
JAZZ - THEATRICAL TAP - CLASSICAL BALLET
HIP-HOP - CONTEMPORARY DANCE**

ENROL TODAY

WWW.MELSDANCECENTRAL.COM.AU



**Your Taxation
&
Superannuation
Specialists.**

Winchelsea

5267 2673

www.surftax.com.au

Oz Trees Nursery: 30 years of excellence in transforming the farming landscape

Michael Turner, Oz Trees Nursery, Irrewarra

Operating in the South-West since 1994, Oz Trees Nursery has been dedicated to growing and planting high-quality trees for landholders of all sizes. Over the past three decades, we have built a reputation for excellence, helping our clients successfully establish and nurture trees on their properties. Our commitment to quality products and meticulous preparation has been the key to our success.

With over 35 years of horticultural experience, we specialize in growing native farm trees sourced from seeds collected across the South-West and other regions where these trees and shrubs naturally thrive. Our extensive knowledge and expertise have enabled us to cultivate more than 200 species of plants, ranging from grasses to large trees, and develop a comprehensive understanding of what works best in different environments.

The diverse soils of the South-West – from sandy banks to heavy black soil flats – present unique challenges. However, through years of experience, we've identified the species that thrive in these various conditions.



Preparation: The key to success

Successful tree planting begins with proper site preparation. Common challenges include soil compaction caused by livestock and weed competition, both of which can deprive trees of essential moisture and nutrients. To address these issues, we offer expert advice and provide seedlings that are resilient enough to withstand the challenges presented by the environment.

Our nursery is situated on the Basalt Plains in Irrewarra, a location that naturally conditions young seedlings, hardening them for field planting. For medium to large planting sites, we use a heavy-duty Merbein Plough to break up compacted soil and create a more suitable environment for seedling roots to establish. This preparation encourages fast growth and ensures strong survival rates.

We encourage our clients to treat tree planting with the same level of preparation they would apply to a fodder crop. Just as one would never sow crops in unprepared, weedy, or compacted soil, the same principle applies to trees.



Tailored solutions for every landscape

For properties with rolling hills, deep loamy soils, and consistent moisture, tree planting is generally more straightforward. Proper weed control alone can yield excellent results. However, for more challenging terrain, such as the heavier plains country, our advanced techniques, such as ripping and mounding, ensure optimal conditions for root development, achieving results comparable to those found in the southern parts of the district with rich, deep loams.

Tree planting is not just about aesthetics; it also adds value to the rural landscape. It improves the overall farming experience by providing shade, shelter, and supporting biodiversity, including the introduction of beneficial insects. These insects play a vital role in pest control, reducing the need for expensive chemical interventions.



Your partner in farm planting

Whether you're planning a small planting or a large-scale shelter project, Oz Trees Nursery is here to support all your farming needs. We provide expert guidance and high-quality seedlings to ensure the success of your planting projects.

**Contact Michael Turner today
for a complimentary site inspection.
Phone: 0407 319 966**





WINCHELSEA FACEBOOK



Community, Sports, Churches and Non-profits

What's on in Winchelsea	facebook.com/WhatsoninWinchelsea
Winchelsea FREE	facebook.com/groups/winchelseafree
Winchelsea Community Information	facebook.com/groups/207538644446972
Winchelsea Classifieds 3241	facebook.com/groups/216942861684082
Winchelsea Lost and Found	facebook.com/groups/768187693217518
Winchelsea Op Shop	facebook.com/HospitalAuxiliaryOpShopWinchelsea
Winchelsea Shire Hall	facebook.com/WinchelseaShireHall
Winchelsea Community House	facebook.com/winchelseacommunityhouse
The Green Winchelsea Residents	facebook.com/groups/515322772623126
Growing Winchelsea Inc	facebook.com/growingwinch
Winchelsea Star	facebook.com/TheWinchelseaStar
Winchelsea Movie Club	facebook.com/winchelseamovies
Winchelsea Community Market	facebook.com/100083362387611
Winchelsea Land and River Care Group	facebook.com/envirowinchelsea/
Upper Barwon Landcare Network	facebook.com/UpperBarwonLandcare
Winchelsea & District Historical Society Inc	facebook.com/Winchelseaanddistricthistoricalsociety/
Winchelsea Wildlife Shelter	www.winchelseawildlifeshelter.com/
SCARS - Surf Coast Animal Rescue Service	facebook.com/groups/415211698950674
Winchelsea Gardeners	facebook.com/groups/779878518703025
Winchelsea & District Historical Society	facebook.com/Winchelseaanddistricthistoricalsociety/
Winchelsea Repertory Society Inc	facebook.com/winchrep/
Winchelsea Globe Theatre	facebook.com/Winchelsea-Globe Theatre-164790897641678
Winchelsea Uniting Church	facebook.com/winchelseaunitingchurch
St Thomas' Anglican Church	facebook.com/StThomasWinchelsea
St John the Baptist Catholic Church	facebook.com/pages/Winchelsea-Catholic-Church/101775670163180
Winchelsea Mainly Music	facebook.com/groups/668500343953191/
Winchelsea Health Club	facebook.com/WinchelseaHealthClub
Winchelsea Playgroup (School terms only)	facebook.com/groups/551663435367031
Winchelsea Girl Guides	www.guidesvic.org.au/
Winchelsea/Modewarre Scouts	facebook.com/1stModewarreScouts
Winchelsea Fire Brigade	facebook.com/winchelseafirebrigade/
Winchelsea SES	facebook.com/groups/WinchSES
Country Women's Association - CWA Winchelsea	facebook.com/pg/CWAWinchelsea/
Winchelsea Bowls Club	facebook.com/Winchelsea-Bowls-Club-533783333344345/
Winchelsea Blues Cricket Club	facebook.com/groups/8999049476/
Winchelsea Blues FC	facebook.com/WinchelseaFNC/
WYLD Winchelsea Youth Leisure and Drop in	facebook.com/groups/569737570027065/
Lions Club of Winchelsea	facebook.com/LionsWinchelsea
Winchelsea Probus	facebook.com/893535194971083
Winchelsea Golf Club	facebook.com/winchelseagc/ facebook.com/groups/1324943804676697
Winchelsea's Zumba Dance Crew.	facebook.com/share/g/1B19EATPVz/

WINCHELSEA CONCRETING

• Driveways • Sheds • Decorative Concrete • Raft Slabs

Robert Murphy

☎ 0438 235 237

✉ winchelseaconcreting@outlook.com

DownRyte Excavations



- Excavations
- Drilling and Piling
- Rock Placement
- Tree and Stump Removal

Sean Hunwick

Mobile: 0409 447 288
Email: downryte@activ8.net.au

direct TEMPORARY FENCING

FOR HIRE - SUPPLIED & ERECTED - 7 DAYS
GEELONG - BELLARINE - COLAC - SURF COAST
PHONE CAM 0417 310 800

SOUTH-WEST — PAINTING — GROUP

Contact us:



0431 719 218



www.southwestpaintinggroup.com.au



matt@southwestpainting.com.au

We specialise in:

- New Homes
- Texture Feature Finishes
- New and Old Cabinetry Coatings
- Commercial Projects
- Maintenance Work
- Residential Work
- Wallpapering
- Pre-Sale Painting
- Timber Decking Rejuvenations

M & L DRAYTON

PLUMBING SERVICES

REG No 24356 C/A No C02594

- Domestic and Rural Plumbing
- Roofing
- Sewerage & Septic
- LPG & Natural Gas Connections
- Motorised Drain Cleaning
- Backhoe Hire

Phone Mark 5288 7244

PO BOX 98 WINCHELSEA 3241

Mobile 0428 520 142



DRIVEWAYS, CARPORTS, CROSSOVERS,
FOOTPATHS, SHED SLABS, STAIRS
HOUSE SLABS, EXPOSED, SEALING & MORE

CONTACT ALISTER NOW FOR A QUOTE

☎ 0411871950

✉ AMACONCRETING1@GMAIL.COM

All About **Mowers & Chainsaws**

Repairs to all makes and models of ride on mowers, domestic mowers, pumps, chainsaws, brushcutters and small engines.

Trading Hours: Mon - Fri 8am - 5pm Saturday 8am - 12 noon

5267 2266 Cnr Princes Hwy & Lennox St Winchelsea
www.allaboutmowers.com.au
accounts@allaboutmowers.com.au

FERRIS CDX STIHL BRIGGS & STRATTON VICTA

IGA

Winchelsea Supermarket

Trading Hours
Monday to Saturday
 8.30am to 7.30pm
Sunday
 10am to 7pm
Ph: 5267 2676
 29 Main St, Winchelsea

 **SOUTHERN GRAIN STORAGE PTY. LTD.**

AG SUPPLIES FERTILISER GRAIN STORAGE SEED CLEANING

(03) 5267 2351



5234 6585 0417 385 984
 For all your domestic & stock water.
 Also available for road and civil construction
 Local owned and operated.

Antique Repairs

By **Doug Burns** est. 1976

- All Furniture
- French polishing
- Carving
- Veneering
- Wood Turning
- Porcelain




Unusual Requests Welcome

180 Barwon Terrace, Winchelsea

0428 672 704

TRENCHES & HOLES PTY LTD.



PHILLIP ROBERTSON
 ☎ **0427 672 945**
WINCHELSEA

- General Earth Works
- Driveways
- Trencher
- Kanga Loader
- Grader
- Excavator Work (3.5 & 6.5 Tonne)
- Tip Truck
- Rock Breaker
- Post Holes & Shed Footings

A.B.N 74006896898

 **Café La Hoot**

have you tried
 'owl' coffee?

1 willis st cafelahoot@gmail.com 0407 528 999

SERVICES & ACTIVITIES IN WINCHELSEA

VLINe TRAIN SERVICES

TO MELBOURNE:

Mon - Fri 6.21(coach) 07.55, 11.10, 14.04, 16.58, 19.21
Sat - Sun 9.34, 14.04, 16.58 19.18

TO WARRNAMBOOL:

Mon - Fri 8.58, 11.51, 14.46, 17.28 (coach), 18.43, 20.53
Sat - Sun 8:48, 11.41, 14.46, 20.38



COUNTRY WOMEN'S ASSOCIATION

7pm second Wednesday of month
Winchelsea Senior Citizens' Hall

Join us. *A role for everyone*



Nationally accredited training to help our community.
Pop in to meet your crew **Wednesdays 7:30pm**

Winchelsea Unit 325 Mousley Drive **132 500**

Winchelsea and District COMBINED PROBUS CLUB



Senior Citizens Rooms,
Harding St, Winchelsea.
New members always welcome.
Enquiries Lorraine 0417 467 927



SOCIAL BRIDGE

Every Tuesday 10.30 am - 1.00 pm
Senior Citizens Centre
36 Harding Street Winchelsea
New players always welcome
Contact Elaine Atkinson 0458009616

WINCHELSEA TRANSFER STATION 55 Cressy Road, Winchelsea

Tuesday	2pm-4pm	Saturday	1.30-3.30pm
Thursday	2pm-4pm	Sunday	9.30-12.30pm

Closed on Christmas Day,
but open on other public holidays
that fall during their normal operating hours.
www.surfcoast.vic.gov.au/disposalsites



WINCHELSEA GIRL GUIDES

Our Unit meets at the Catholic Church Hall,
Harding St Winchelsea each Monday 4.30pm-6pm
All girls 5yrs- 15yrs Welcome!
Contact Yvonne Orchard 0448 672 630
or Lily Del Rennie Ph. 0428 936 441



1st Modda & 1st Winchelsea SCOUT GROUP

Joeys: Tuesdays of school term 5-6pm
Cubs: Mondays of school term 6:30-8pm
Scouts: Tuesdays of school term 6:30-8:30pm
All at Modewarre Hall, Cape Otway Rd
Venturers: Wed at Walton's Rd Venturer Den
Contact Marie McPadden 0409 330147



BUS TO THE HUB

For reservations on the weekly bus
to the Eastern Reserve Hub,
please phone 52671202.

SURF COAST MOBILE LIBRARY

Hesse St, Fridays, 2pm-5pm
Surf Coast Mobile Library
parked in Hesse Street (outside Shire Hall)
Fridays 2:00 and 5:00pm unless it is a Public Holiday.

WINCHELSEA TAXI

0429 672 888 or 5267 2888
Wheelchair accessible
10 seater bus available.

WINCHELSEA PLAYGROUP

Every second Thursday 10am-12pm
St Thomas Anglican Church Hall
cnr Barwon Tce and Hopkins St, Winchelsea
Contact: Danni Menzies 0432019944
winchelseaplaygroup@gmail.com
Facebook - Winchelsea Playgroup 2019
New families welcome





Invitation to our 3rd webinar in the series
A Nature Positive Future for the Barwon River System

UNDERGROUND WATERWAYS: WHY SHOULD WE CARE ABOUT GROUNDWATER? WEBINAR



Save the date:
'Why Should We Care About Groundwater' Webinar
Thursday 3rd April - 1:00 - 2:00pm

21 March - 23 March
MEADOW
Bambra
Victoria
Last weekend of the season

Meadow 10 The End Of A Local Era

March 21-23, 2025 Bambra
Music, Camping, BYO

Featuring Hiatus Kaiyote, Pond, MJ Lenderman & The Wind, Empress Of, Kaiit, Floodlights, and more. Get ready to enjoy one final weekend EVER in the Bambra Bowl on Gulidjan, Gadubanud and Wadawurrung land.

Food vendors from surrounding areas, Airey's Inlet's Pete's Pizza, or Torquay's 'Gypsy Burger' and Mexican 'Perla Taco's, Melbourne and Tin Can Alley Cafe.

www.facebook.com/meadow.mf

Winchelsea Community Foodbank

Fridays, 12 - 2PM

30-32 Hesse Street Winchelsea



For more info, contact Tess
healthpromotion@hesse.vic.gov.au
0417 848 292



Winchelsea Men's Shed



For the Community

NEW MEMBERS WELCOME

Every Wednesday from 9.30am
51 Hesse Street, Winchelsea

KINDLING/OFFCUTS \$7.00 bag

Pickup Wednesdays 9.30-2.30
For delivery, call Bill 0438 083 373

NESTING BOXES Birds/animals

NEED A JOB DONE?

Woodworking, Furniture Repairs
Call in Wednesdays to order

Ray Atkinson (Co-ordinator) 0407839139
winchmenshed@gmail.com



WINCHELSEA LIONS CLUB

ARE SELLING ENVIRONMENTALLY
FRIENDLY SHREDDED PAPER
COMPRESSED BRICKS FOR YOUR FIRE
SAVE ON THE RISING COST OF WOOD
BY INCLUDING PAPER BRICKS
AS WELL

PACKET OF 4 ROARS (BRICKS) **\$5**
ROLL OF PURRS (SMALL ROLLS) **\$2**

AVAILABLE AT LIONS PAPER SHED
36 HARDING STREET
SATURDAY MORNINGS
10AM - 12 NOON
FROM 4TH MAY UNTIL SOLD OUT

EFTPOS AVAILABLE
CASH ACCEPTED

WINCHELSEA LIONS CLUB

PAPER RECYCLING

Paper depot rear of
Senior Citizens Rooms
Harding Street
NEWSPAPERS,
MAGAZINES,
PHONE BOOKS WANTED



RAISING FUNDS FOR
OUR TOWN & DISTRICT
0408 520 606

We'd love to see you!

WINCHELSEA PLAYGROUP

Each Thursday during school terms.
Come along between 10AM - 12PM.
Check out our Facebook Page for more
information about the happenings of each
session.
Playgroup Leader - Danni Menzies
Email:
winchelseaplaygroup@gmail.com
St. Thomas's Hall,
27-29 Barwon Terrace,
Winchelsea VIC 3241

**\$5 PER
FAMILY**
INCLUDES
MORNING
TEA & HOT
DRINKS FOR
CAREGIVERS

Scan to be
part of our
Facebook
Group

WANT TO JOIN PROBUS?

Enjoy fellowship with
other members

Enjoy trips & outings

Listen to guest speakers



Contact Lorraine
0417 467 927



Wightons Lawyers

Dispute Resolution & Litigation
Debt Collection
Property Law
Wills & Estates
Powers of Attorney
Business Law
Family Law

By appointment only

22 Willis Street, Winchelsea
ph. 5221 8777

www.wightons.com.au



SIMPLE STORAGE SOLUTIONS

- Personal & Business Storage
- Boat, Caravan & Vehicle Storage
- High Security Premises
- Individually Alarmed Units
- Electric Gate Access
- 7 Day Access & CCTV

YOUR STORAGE PROBLEMS SOLVED

5267 3116

6 ALSOP DRIVE, WINCHELSEA 3241

BIN AMNESTY



Extra wheelie bins at your house?

We're holding a bin amnesty to collect all unwanted and unpaid extra or upgraded kerbside waste bins.

Each household pays a waste charge through their rates for collection of four bins:

- FOGO (lime green lid)
- Landfill (red lid)
- Recycling (yellow lid)
- Glass (purple lid)

Not sure if you're paying for extra or upgraded (larger) bins?

Or do you want to organise the removal of extra bins?

Call us on **5261 0600** or email info@surfcoast.vic.gov.au and include 'Bin Amnesty' in the subject line.

Find out more: surfcoast.vic.gov.au/BinServices.



HESSE RURAL HEALTH



Acute Care+
Urgent Care+
Residential Aged Care+
Community Nursing
Dietetics
Physiotherapy
Occupational Therapy

Diabetes Education
Social Support Groups
Counselling
Home Care
Health Promotion
* services from Winchelsea only

www.hesseruralhealth.com.au

P: (03) 5267 1200 E: reception@hesse.vic.gov.au

SIMCO PLUMBING SERVICE

Domestic - Commercial - Rural

0400 643 976

- All general Plumbing and Gasfitting • Water tanks and Pumps
- Renovations and Extensions • Hot water and Heat pump
- Split system and Wood heaters • Roof and Gutter
- Septic and Treatment plants • Excavation, Bobcat and Tipper
- Driveways and Earthworks
- Blocked drains and CCTV Inspection

Simon McGillivray

Lic: 109610 Free Quotes, Fast & Friendly Service



HEALTH AND WELL BEING



Family Healthcare - Naturally through Chiropractic

Get out of pain and back to life.
Build a foundation for lifelong wellness.
Perform at your absolute best.




www.onebodychiropractic.com.au
 03 52672240 Shop 4/21 Hesse St Winchelsea

Here for your Vitality...



Casuarina Counselling Therapy
Time For You

Counselling to help find clarity, understanding and new ways forward for relief from distress of all kinds, including anxiety, depression, addiction, relationship issues.

Call 0493 988 150 to book appointment
Available at The Exchange,
32-34 Main Rd, Winchelsea



Lifeline

13 11 14



SUNNY GYM
GYM BUT JOYFUL

Strength, Mindfulness and Martial Arts in Winchelsea

Boxing NEW!
Kids Kung Fu
Group Exercise
Personal Training
Qi Gong
sunnygym.com.au



Moriac Veterinary Clinic

0447 781 089

PHONE 24 HOURS

784 Hendy Main Road Moriac
info@moriacvet.com
www.moriacvetclinic.com.au

HOURS // Monday - Friday: 8am - 5pm



Winchelsea
Medical Clinic

Located at 36 Main Street, Winchelsea 3241

For any enquires or bookings please contact the clinic on 5292 8028.
Or visit our website: www.winchmc.com.au

Opening Hours:
 Monday - Friday 8:00am - 5:00pm
 (Monday Evening Clinics available and selected Saturdays)



Available on the
App Store

GET IT ON
Google Play

Our clinic accepts online bookings via the app called HotDoc.
Download the app on the App Store or Google Play or head to our website.



Caring for families since 1883

*"We are here to help you
tell your loved one's story;
however they want it told"*



PH: 5221 4788
www.tuckers.com.au



- Domestic and Commercial hire equipment • Industrial welding gas
- Digging and Earthmoving equipment • New trailers and trailer repairs
- Firewood • Stockists of Royal Oil Lubricants products
- LPG for domestic and commercial requirements

Give Chris and the Team a call on **5232 1177** or email info@colachire.com.au

www.colachire.com.au

101 Wallace St Colac 3250



GREAT Bundle Deal on Bosch Hot Water...

FROM ELGAS
Buy any Bosch Bluetooth continuous flow hot water model - 16Litre, 20Litre or 26Litre and Receive \$100* in Elgas bonus LPG gas credits

*For more details www.elgas.com.au/appliances/bosch-aptflow-16-20-26-lpg-bundle-sale



AND... for new customers, an additional \$80 WORTH OF LPG GAS CREDITS** when you open a new LPG Gas account with Elgas



**Further details can be viewed at www.elgas.com.au

Ask about the Elgas Easy Payment Plan - 12 months interest free*** on selected LPG appliances

***Further details can be viewed at: www.elgas.com.au/epp

Automatic tanker gas bottle refill OR gas bottle exchange refill is available for home or business.... Call today or visit our website for our many customer benefits and latest offers

131 161
www.elgas.com.au

ELGAS



17 Alsop Drive

- ❑ LOG BOOK SERVICE
- ❑ AUTO ELECTRICAL
- ❑ TOWING
- ❑ AIR CONDITIONING
- ❑ CLUTCH & BRAKES
- ❑ TYRES
- ❑ WHEEL ALIGNMENT
- ❑ BATTERIES

CAR, TRUCK REPAIRS & Roadworthys

PH: 5267 3001

Mob: 0417 137 457

Visit our new office located at Winchelsea Ag, Horse & Pet

For all your livestock, rural real estate and property management needs, speak to the Charles Stewart team today

Livestock Peter McConachy 0408 522 878

Real Estate Michael Stewart 0418 520 467

Property Management Sarah Higgs 5231 5011



5231 5400
15 Murrell Street, Winchelsea



eldersrealestate.com.au

Elders

You're in Safe Hands With Peter Lindeman Delivering Exceptional Results for Over 20 Years

If you're thinking of selling a Rural or Lifestyle acreage property on the Bellarine, the Greater Geelong region or beyond then think Peter Lindeman.

Peter spent 20 years managing farms before jumping the fence to sell them; and over the last 23 years he's helped over 350 vendors achieve extraordinary results, more often than not surpassing their expectations. Why not let Peter show you how he can help you achieve an outstanding result for your property.

Peter Lindeman - 0418 525 609

RURAL AND LIFESTYLE SALES MANAGER - ELDERS GEELONG

E: peter.lindeman@elders.com.au



M&B WOOD PLUMBING

Call Matt - 0418 319 357
mbwoodplumbing.au

Servicing Winchelsea & surrounds

- General maintenance & blocked drains
- Gas fitting & hot water service upgrades
- New homes & renovations

AlfordBuilt

New Homes, Renovations, Extensions,
Bathrooms, Decks & Pergolas

0408 583 362

stephen@alfordbuilt.com.au



REGISTERED
Building Practitioner

Lupton BUILDERS

SPECIALISING IN QUALITY



REGISTERED
Building Practitioner

- | | | |
|---------------|-----------------------|---------------|
| • NEW HOMES | • EXTENSIONS | • RENOVATIONS |
| • ALTERATIONS | • DECKS | • PERGOLAS |
| • CARPORTS | • VERANDAS | • RE-CLADS |
| • BATHROOMS | • WINDOW REPLACEMENTS | |

Leigh Lupton
0438 840 104

LEIGHLUPTON17@GMAIL.COM

Est. 1977

NATURAL GAS CONNECTIONS

M. & L DRAYTON PLUMBING SERVICES

YOUR LOCAL LICENSED

- PLUMBERS (24356)
- GAS FITTERS
- GAS CONVERTERS
- CARBON MONOXIDE TESTING

MARK 0428 520 142

Green Lead Electrical

Connecting you to a greener future
REC 23618

0467 097 101



Servicing Geelong & the Surf Coast

Specialising in all residential electrical work including:

- Switch board & lighting upgrades
- Outdoor lighting
- Electrical safety checks
- Energy efficient LED lighting
- Ceiling sweep fans & ventilation
- Energy saving advice

Phone Martin Wilkinson:

0467 097 101

greenlead@outlook.com

1132268-CG1B-14



MET BUILDING & CONSTRUCTION

NEW HOMES | EXTENSIONS | RENOVATIONS

Ph: 0409 433 687



REGISTERED
Building Practitioner



The treasures of Murano: unique glass objects in Peter Grünbaum's private collection

Grünbaum AG

Peter Grünbaum has been a collector since early childhood. His interest in Murano glass objects was not his first passion, but certainly the most enduring. Today, the Swiss artist owns one of the most impressive collections in private hands.

Glass has fascinated people for more than 3,000 years. In particular, the translucency of the material, in combination with the possibilities for shaping it that have been perfected over centuries, put glass on a par with sculpture and other forms of artistic expression spanning different eras in the history of art. Its durability, in contrast to its literal fragility, is the reason for archaeological finds dating back to the 15th century in the field of glass vessels.

Throughout the centuries, there have been a series of outstanding, timeless phases with characteristic forms of artistic glass processing and the regions and artists associated with them. The Venetian glass tradition, whose roots go back to the 7th century BC, is particularly notable here. Since the 12th century, the name of the Murano archipelago, north-east of Venice's old town, is synonymous with glass objects that are still sought after by connoisseurs around the world and are often expensive. They consider Murano glass to be absolutely unique due to its shapes and colors and even its imperfections. So unique that it sparks the passion of enthusiastic collectors in particular.

One of these collectors is Peter Grünbaum. Before the Swiss national gave up his career as a marketing manager in international corporations and his own marketing agency after



three decades in 2005 and devoted himself entirely to his passion for collecting, he had already achieved a great deal as a collector. The sale of the toy robot collection, with more than 1,200 objects, to the founder of the Vitra Design Museum in Weil am Rhein, Rolf Fehlbaum, was just one noteworthy milestone.

Although the Murano glass objects are only one of many categories in Grünbaum's collection, known as the "1000 Objects", they are nevertheless considered to be among the most outstanding pieces in the collection, which in the meantime comprises over 6,000 objects. Although Grünbaum offers the Murano glass vases and other rarities he has collected over the years for sale, he has continued to add to his portfolio by acquiring other collections.

More than 200 objects - vases, bowls and sculptures from the workshops of the masters of glass processing, from the 1930s and 1940s as well as from more recent times, from the 1950s to the 1970s, are currently for sale on the 1000-objekte.ch website.

Together with other collector's items from the fields of furniture and lighting design, as well as a wide variety of rarities ranging from cigarette pictures to Pirelli calendars, Grünbaum constantly rearranges parts of his collection in his own four walls in Zurich. In addition to numerous pictures and videos on his website, Peter Grünbaum is happy to invite any interested parties and potential buyers upon request to come and see the uniqueness of his collection for themselves and thus understand, at least to some extent, how a passion for collecting can arise from a liking.

Discover a rewarding and secure career as a Prison Officer.

Apply now to become a Prison Officer at Western Plains Correctional Centre, Lara.



**Corrections
Victoria**

Hiring now



Authorised by the Victorian Government,
1 Treasury Place, Melbourne



A family business operating for more than 138 years, HF Richardson services an extensive client base throughout the greater Winchelsea area. Our success is built on a long history of innovation and while we've moved with the times, our basic values of honesty, trust and integrity have remained.



Eric Foster
0429 499 924
Sales Executive



Ken McDonald
0418 524 150
Licensed Estate Agent

**Residential | Rural Lifestyle
Agricultural Farms**

HF RICHARDSON

PROPERTY

www.hfrichardson.com.au



Life's busy. Let us help you.

Contact us today

We can help you with:

- Buying your first or next family home
- Saving for your first home
- Residential Investment Lending
- Refinancing from your current lender
- Home loan reviews
- Pre-approvals

With extensive banking experience and financial expertise, we'll help bring your financial goals to life.



Ebony Berg
0400 784 249



Josie Kavenagh
0409 564 192

Bendigo Bank

Community Bank
Winchelsea and District

**Winchelsea
Star**

ISSN 2202-6851



9 772202 685002

Since 1977

**DEFIBRILLATORS IN
WINCHELSEA**

**Accessible to the public
24 hours a day**

The Winchelsea Lions Club has compiled a list of public access defibrillators in Winchelsea. If anyone knows any others with 24 hour public access, please let Linda Carter know 0439 817 263.

Ambulance Victoria
33 Willis Street

Bendigo Bank
11 Main Street

Globe Theatre (Side entrance)
17 Willis Street

Hesse Rural Health
8 Gosney Street

Men's Shed
51 Hesse Street

Netball Courts
Eastern Reserve Hopkins St

Senior Citizens Club
36 Harding Street

Uniting Church
33 Hesse Street

Winchelsea Bowls Club
Hesse St,

Winchelsea Cemetery,
McConachy St

Winchelsea Golf Club
13 Anderson Street

Winchelsea Primary School
Main Street

Wurdale Memorial Hall
220 Wurdale Road

