



LIGHTING IN HEALTHCARE

APPLICATION GUIDE

LIGHTING UP THE **HEALTHCARE SECTOR.**



Lighting plays a significant role in health, wellbeing and performance — essential in healthcare.

Combining the latest technology with smart lighting design, Pierlite harnesses the power of natural light to help create the highest quality medical and aged care environments.

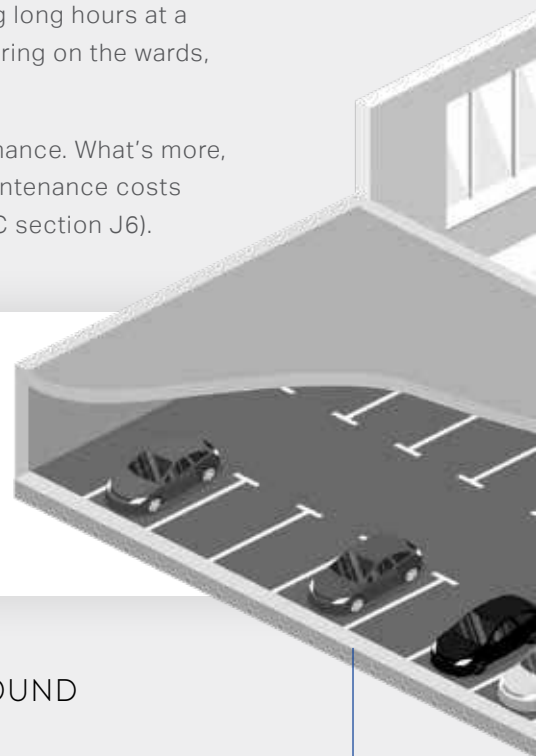
The Pierlite range of smart, human-centric lighting can be completely customised to increase focus, improve safety and support healing, contributing to the creation of exceptional healthcare zones.

From vital surgical functions within operating theatres and supporting long hours at a nurse station, through to the wellbeing of patients resting and recovering on the wards, purposeful lighting choices can enhance health from every angle.

Each solution considers patient experience while aiding staff performance. What's more, the Pierlite range of energy efficient luminaires helps to minimise maintenance costs and reduce power consumption in line with Australian standards (NCC section J6).

MEDICAL
EXAMINATION

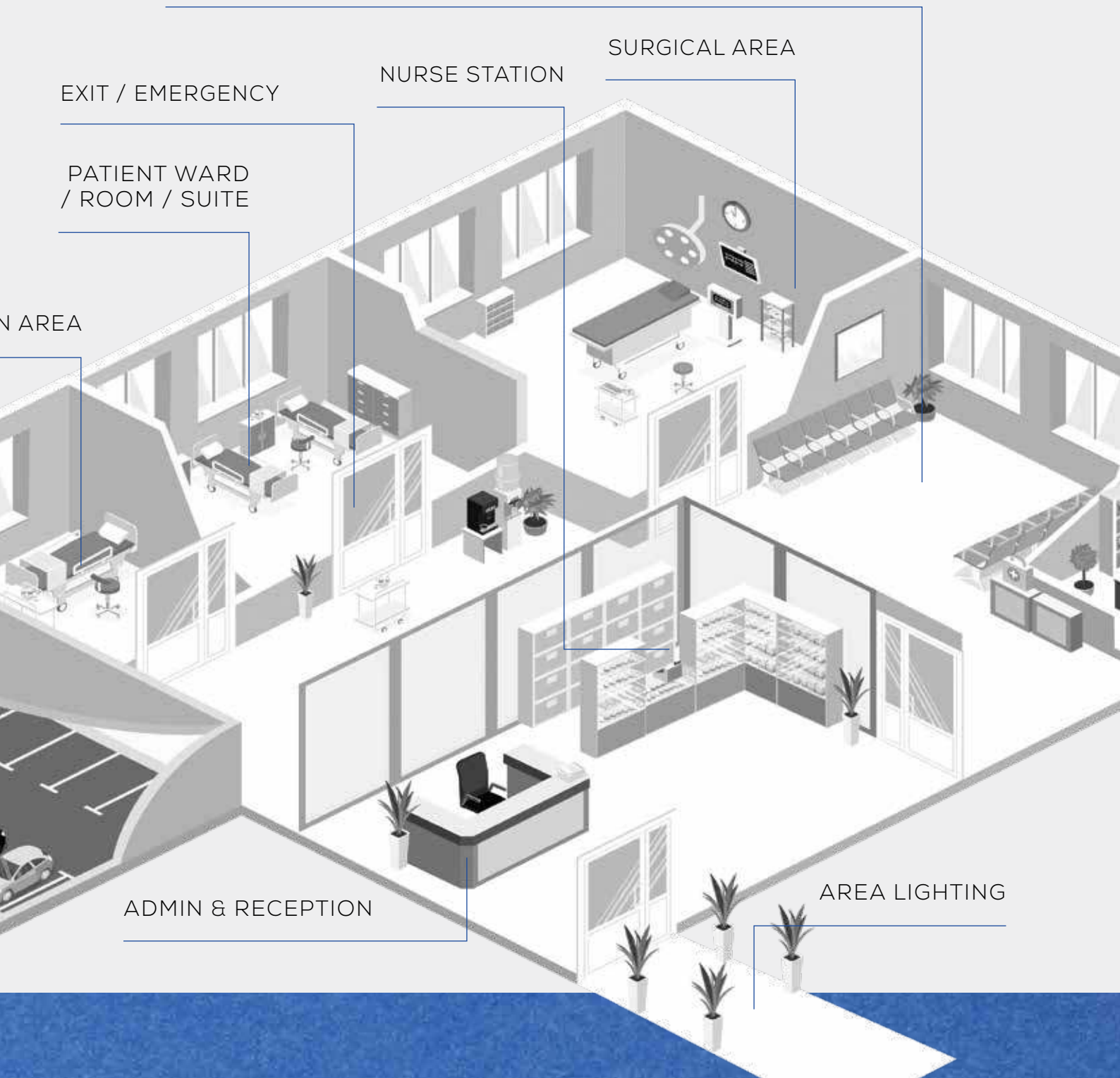
Well planned lighting choices take distinct staff, patient and building needs into account.



UNDERGROUND
CARPARK



CORRIDOR / THOROUGHFARE



PRODUCT OVERVIEW AND LIGHTING SOLUTIONS

The products shown are only a selection of what is available for healthcare application. To find out more about our range please visit pierlite.com.au. Our product offering includes downlights, surface lights, troffers, panels, feature lights, battens, floodlights, architectural and façade lighting, security lighting, emergency lighting and lighting control.

ADMIN & RECEPTION



Derungs
ViVva



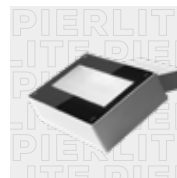
Momentum range



Siteco Scriptus LED
Linear Luminaire



Dot Downlight
range



SIDE Solaris
MCL



SIDE Drop

NURSE STATION



Equatore 50
Linear Profile



AmbienZ LED
Troffer



Dot Downlight
range



DLED3 Troffer



Siteco Lunis

MEDICAL EXAMINATION AREA



Lab LED
Cleanroom Gen 2



Slender LED
Panel Gen 2



Planet Lighting
ULED / ULED +



Planet Lighting
Phantom



Planet Lighting
PentaLED 28 & 12

SURGICAL AREA



Lab LED Operating
Theatre



Planet Lighting
PentaLED 81



Planet Lighting
TrisLED



Planet Lighting
PentaLED 30E



Planet Lighting
U29



Planet Lighting
Unica 860 / 520

CORRIDOR / THOROUGHFARE



Dot Kimbal range



DLED 100
Profile



SIDE Jogger LED
Wall Light



AmbienZ LED
Troffer

PATIENT WARD / ROOM / SUITE



Planet Lighting
Overbed Light



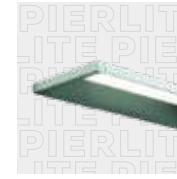
DLED3 Troffer



Fosnova Cortesia
Night Light



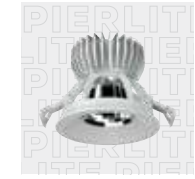
SIDE Jogger LED
Wall Light



Derungs Zera



Dot Downlight
range



Dot Kimbal range

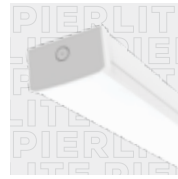
UNDERGROUND / UNDERCOVER CARPARK



BWP Pro 2 LED
Emergency
Weatherproof Batten



Vandalux LED
Lumen Select Gen 2



Nipper LED Batten

AREA LIGHTING & EXTERNAL CARPARK



Siteco SL11



Siteco DL20



Start Bollard IP65



Environ
Area Light



SIDE Verso Bollard



Disano Vista



Disano Como

EXIT & EMERGENCY



Blade 2 DALI LED
Exit Light



Pathfinder 2
DALI LED
Emergency Light

MENTAL HEALTH / ANTI-LIGATURE



Dot Downlight with
Secure Access
Lens



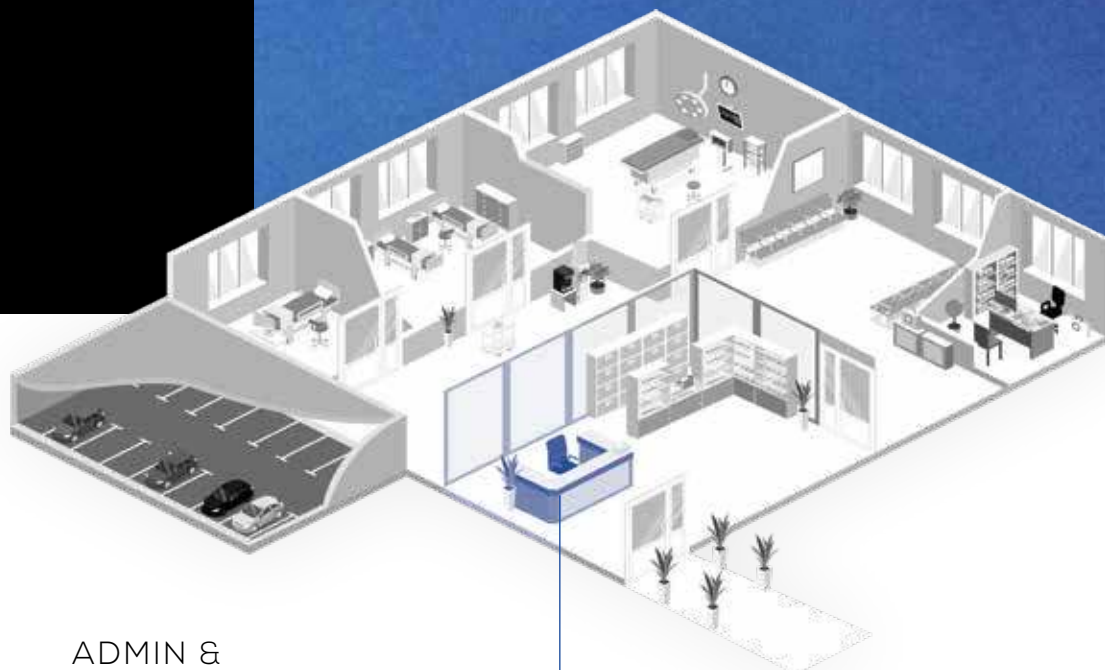
Cellite Raw



Cellite Remand

CALM & COMFORTABLE ON ARRIVAL





ADMIN &
RECEPTION

Attractive and ambient lighting for reception areas promote a sense of comfort while offering a seamless transition to clinical areas.

Create an entry that makes people feel welcome and calm from the moment they arrive. With a focus on the human visual, biological and emotional aspects of light, Pierlite delivers solutions that instil security and offer respite for occupants as they enter a facility, as well as providing comfort lighting with low glare to benefit those working within admin-focused spaces.

Choose from a range of ambient and decorative lobby lighting to create a reassuring first impression that lasts.



Derungs
ViVva



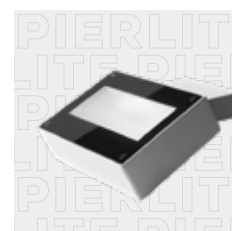
Momentum range



Siteco Scriptus LED
Linear Luminaire



Dot Downlight
range



SIDE Solaris
MCL



SIDE Drop



DERUNGS VIVVA

The basic element of the ViVAA luminaire family is the exceptionally flat lamp body, which provides an unforgettable light experience. The three models – surface mounted, pendant and Ring – provide individual solutions for a diversity of projects.

FEATURES AND BENEFITS

- Flexibility for every project with a variety of models and a restrained design
- Energy-efficient thanks to new LED technologies up to 111 lm/ W
- Smart flat design, discreet elegance in harmony with the interior

ADMIN & RECEPTION

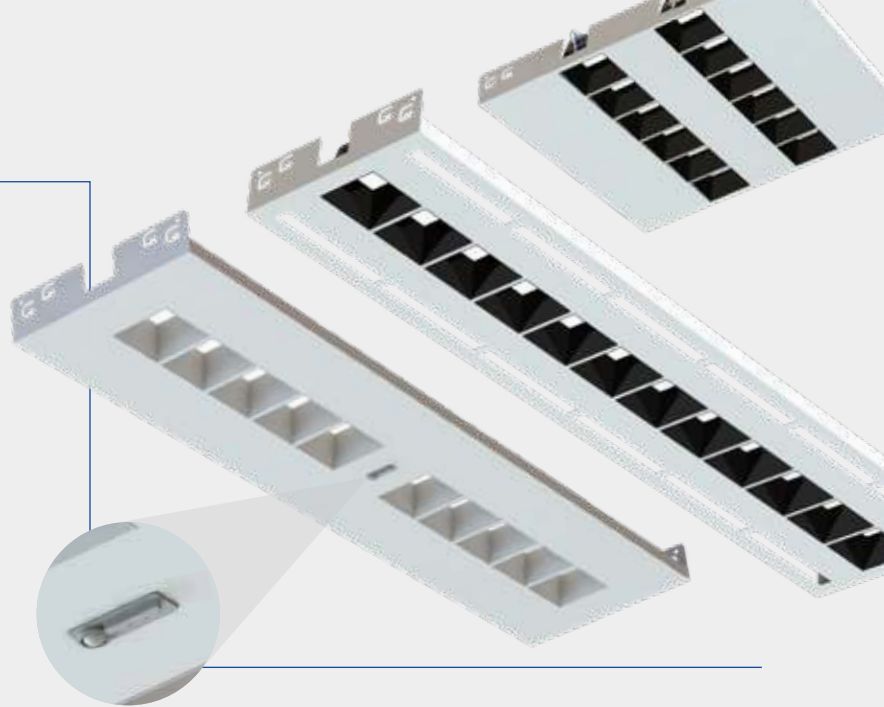


MOMENTUM 1 TROFFER

Momentum 1 is a sustainability compliant, fully configurable modular troffer that offers design flexibility, short lead times and outstanding performance. Its aesthetically pleasing design with side-lit panels and central optics integrates seamlessly into contemporary environments of today.

FEATURES AND BENEFITS

- Balance of style and performance specifications, targeted for GreenStar and WELL rated buildings
- Highly efficient lighting, and excellent performance and light distribution to achieve low glare UGR16 compliant designs
- Design on demand for rapid prototyping and production



CRI 90
Colour
Rendering
Index



UGR 16
Unified Glare
Rating



3SDCM
MacAdam
Step Ellipse



72,000hr
Lifetime



Sensor

SITECO SCRIPTUS LED LINEAR LUMINAIRE

Innovative tunable LED technology, progressive optics and state-of-the-art design: Scriptus is specifically developed for illuminating contemporary spaces and environments, and with its innovative technology and functional design sets new standards for today's general lighting.

FEATURES AND BENEFITS

- Luminaire range for surface and pendant mounting
- High-quality lighting technology with new optical system for glare-free visual comfort
- Maximum planning flexibility thanks to various lengths and luminous intensities as well as a wide range of control options



CRI 80
Colour
Rendering
Index



UGR 16
Unified Glare
Rating



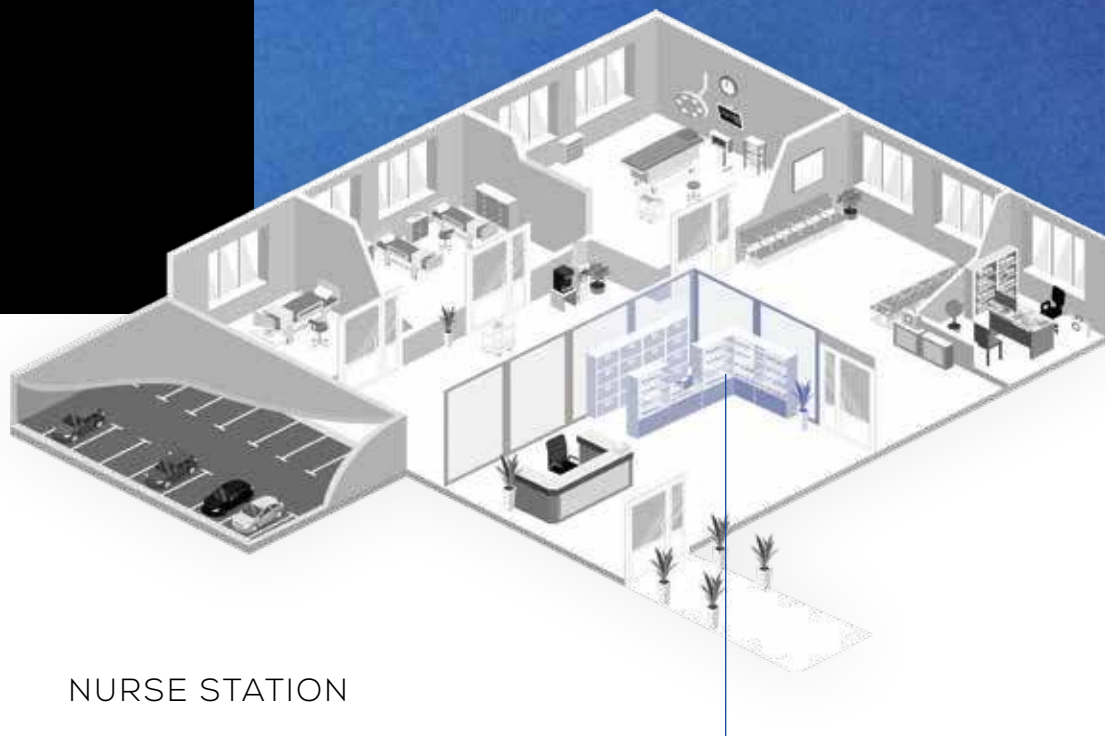
3SDCM
MacAdam
Step Ellipse



**Tunable
White**

COMFORTABLE LIGHT, DAY AND NIGHT

Staff
Station 1
Emergency
Resuscitation



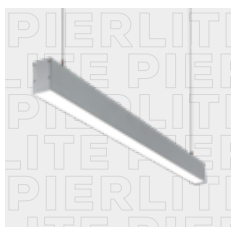
NURSE STATION

Lighting that supports the diverse range of responsibilities carried out by nurses at all hours.

User-friendly, performance-based lighting is vital for nurses who often work long shifts and move through multiple spaces within healthcare facilities.

With duties ranging from manual tasks and face-to-face interactions to time spent working at a computer, a nurse's role is varied. Designing the lighting to meet the demands of each space can significantly enhance performance and wellbeing, particularly for those working night shift.

Pierlite provides comprehensive lighting solutions that consider glare control for the use of screens and complete customisation to suit a range of functions, no matter the time of day.



Equatore 50
Linear Profile



AmbienZ LED
Troffer



Dot Downlight
range



DLED3 Troffer



Siteco Lunis



EQUATORE 50 LINEAR PROFILE

Equatore 50 is a suspended or surface mounted linear profile range designed for contemporary environments where style and performance are equally important.

FEATURES AND BENEFITS

- Suspended profile with direct/indirect light output (60%/40%), Surface mount version with downward output only
- Stand-alone linear profile 1200mm, 2400mm and 3600mm
- Black, White, and Satin Silver finishes available with PC diffuser



CRI 90
Colour
Rendering
Index



UGR 22
Unified Glare
Rating



4SDCM
MacAdam
Step Ellipse



120°
Beam Angle

AMBIENZ LED TROFFER

Ambienz LED comes in diffused and louvered options, offering high performance and a pleasant working environment. The curved steel body is softly back-lit reducing the cavern effect often associated with cut off louvered luminaires.

FEATURES AND BENEFITS

- Ideal for environments with low UGR requirements, and professional applications where a softer light is required, such as hospitals
- Louvered and diffused options to suit various applications in 1200 and 600mm lengths, 300mm standard width
- The photometric distribution provides outstanding uniformity



CRI 90
Colour
Rendering
Index



UGR 19
Unified Glare
Rating



3SDCM
MacAdam
Step Ellipse



72,000hr
Lifetime

DOT DOWNLIGHTS

Lighting demands vary from project to project. Some require the best quality of light, others need maximum light output from their luminaires while a significant number of projects must have low "up front" costs.

The DOT LED range offers four options to cater for these demands; they are EXCEL, PERFORMANCE, COLOUR and BASE. All options are available in three configurations – fully recessed, surface mounted and suspended.



CRI 80 / 90
Colour
Rendering
Index



Cyanosis
Compliant



2SDCM
MacAdam
Step Ellipse



70°
Beam Angle



100,000hr
Lifetime

VITAL SIGNS **BROUGHT TO LIGHT**





MEDICAL
EXAMINATION
AREA

Advanced lighting solutions that improve the accuracy of medical examinations in a range of clinical settings.

Medical examination areas need to support a variety of clinical functions. It is why Pierlite solutions allow users to effortlessly shift between lighting presets to create an atmosphere that is appropriate for each procedure or patient interaction.

The reliable detection of cyanosis (the bluish discolouration of skin and mucous membranes as a result of low blood oxygen levels) is a significant consideration in clinical settings. Pierlite offers industry-leading Australian examination lighting, such as the ULED, which delivers high CRI >90 and cyanosis fittings to assist medical professionals during vital examinations and minor procedures and visibility of screens.



Lab LED
Cleanroom Gen 2



Slender LED
Panel Gen 2



Planet Lighting
ULED / ULED +



Planet Lighting
Phantom



Planet Lighting
PentaLED 12 & 28



LAB LED CLEANROOM GEN 2

The Pierlite LAB LED Cleanroom Gen2 is the perfect lighting solution for medical and hygienic environments with a plaster recess mount and LED optimised lens for low glare comfort with excellent colour rendering and efficiency.

FEATURES AND BENEFITS

- UV resistant and LED optimised acrylic diffuser for low glare comfort
- Screw-less and removable front cover for easy installation and maintenance
- Water resistant and dust-free up to IP65



CRI 90
Colour
Rendering
Index



UGR 19
Unified Glare
Rating



Cyanosis
Compliant



72,000hr
Lifetime



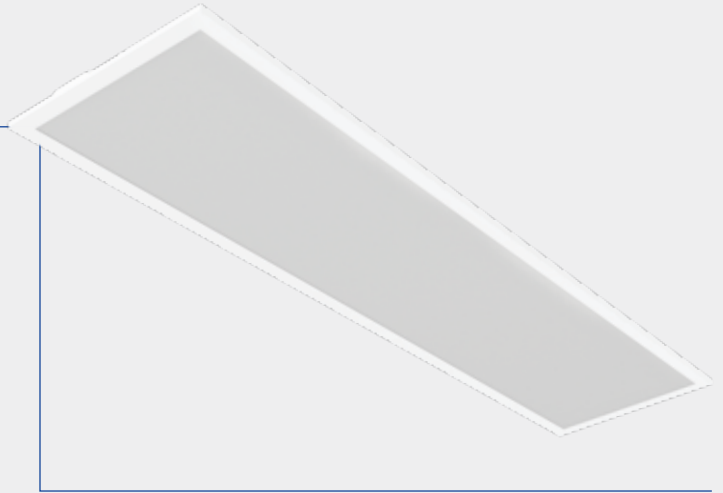
IP65
Ingress
Protection
Angle

SLENDER LED PANEL GEN 2

The Pierlite Slender LED Panel Gen 2 is a comprehensive range of energy-efficient low glare, long life panel solution for general lighting applications.

FEATURES AND BENEFITS

- Smooth opal acrylic diffuser offering an evenly distributed appearance
- Aluminium matt finish 10mm slim white frame, complete with remote, long life and flicker free driver
- Available in 3 sizes and 4 power output options for project requirements



CRI 90
Colour Rendering Index



UGR 19
Unified Glare Rating



Cyanosis
Compliant



72,000hr
Lifetime



IP40
Ingress Protection Rating

PLANET LIGHTING ULED EXAMINATION LIGHT

ULED is a significant step beyond traditional halogen examination lights and other LED fixtures. Specifically designed for close examination and minor procedure lighting tasks, where a very powerful yet infinitely adjustable cool light is required, the ULED is the best possible solution for hospital wards, consulting rooms and clinics.

FEATURES AND BENEFITS

- Suitable for areas requiring compliance for Cyanosis Observation with CRI96 (AS/NZS 1680.2.5)
- Easy clean IP65 membrane switch with ON/OFF switching and 4 stage dimming control
- Mounting options: Ceiling, Wall, Extended wall, Trolley and twin head



CRI 96
Colour Rendering Index



4000K
Colour Temperature (Natural White)



Cyanosis
Compliant



50,000hr
Lifetime



IP65
Ingress Protection Angle



5 Year
Warranty

PRECISION LIGHTING

FOR CONTROL
AND FOCUS





SURGICAL AREA

For clarity in scrub zones, utility rooms, operating theatres and recovery areas, Ra90+ LED is essential.

A state-of-the-art surgical lighting solution promotes exceptional performance. Incorporating shadow elimination and a high Colour Rendering Index (CRI>90), Pierlite dimmable solutions allow for the ideal balance between background and task lighting in theatres. This also allows each individual surgeon to select the appropriate lighting to undertake their work with confidence – every time.

Plus, maintain the highest standard of hygiene with sealed, dustproof fittings specifically designed for cleanrooms.



Lab LED Operating Theatre



Planet Lighting PentaLED 81



Planet Lighting TrisLED



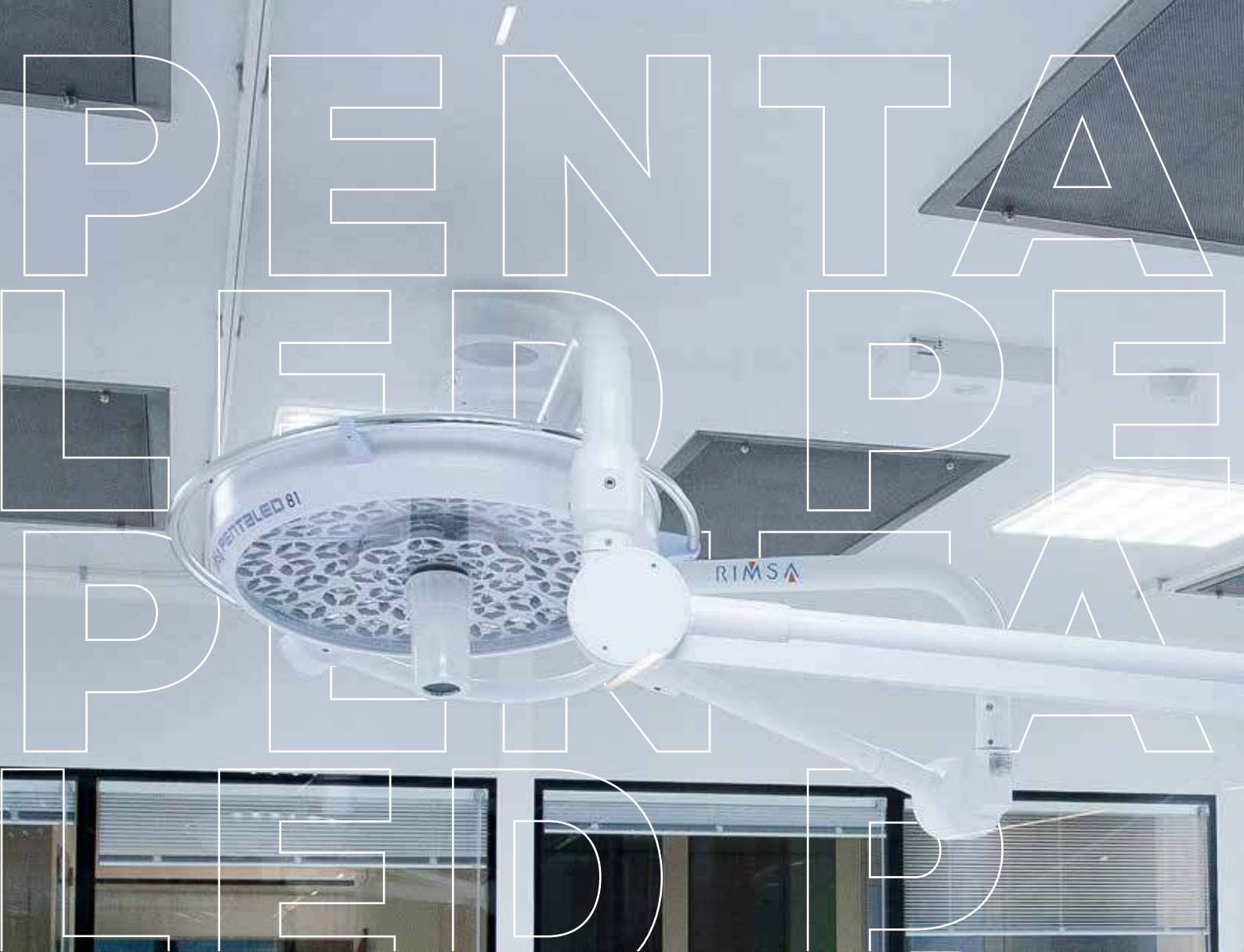
Planet Lighting PentaLED 30E



Planet Lighting U29



Planet Lighting Unica 860 / 520

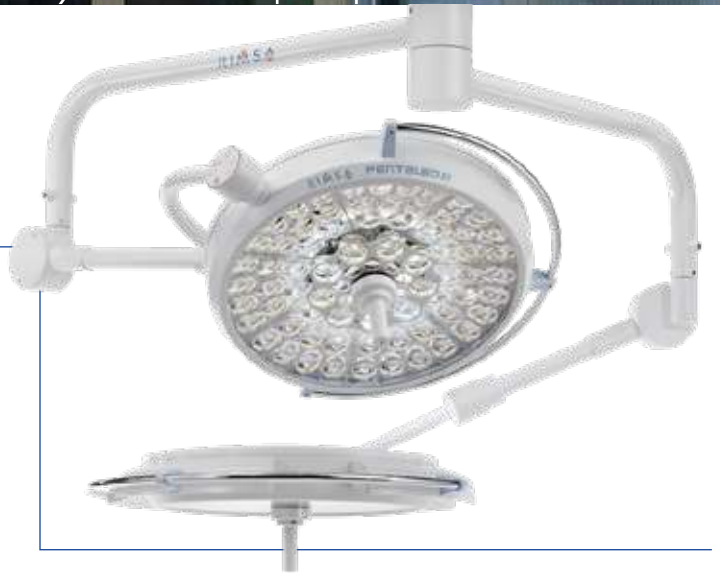


PLANET LIGHTING PENTALED 81

PentaLED 81 is a hi-tech major surgery light designed to guarantee outstanding performance levels. The PentaLED 81 delivers an intense cool beam of up to 160,000 lux of light at one metre.

FEATURES AND BENEFITS

- Steel arms, Anodised aluminium head, Autoclaveable handle
- Mounting options Wall, Trolley, Ceiling
- Integrated Solutions (optional) TVCC camera, Support monitor arm, IR remote control, Wall control panel



CRI 96
Colour
Rendering
Index



50,000hr
Lifetime



3 Year
Warranty

LAB LED OPERATING THEATRE

The Pierlite LAB LED OT is the lighting solution in operating rooms and surgical areas for optimal visualisation and successful safe surgery and procedures. Using the highest quality LEDs and an optimised lens for low glare comfort with excellent colour rendering and efficiency.

FEATURES AND BENEFITS

- Fully sealed luminaire - water resistant and dust free up to IP65, ideal for medical and cleanroom applications.
- Screw-less removable front cover for easy installation and maintenance.
- Cyanosis Compliant



CRI 90
Colour Rendering Index



UGR 19
Unified Glare Rating



Cyanosis Compliant



72,000hr
Lifetime



IP65
Ingress Protection Angle

PLANET LIGHTING TRISLED

The Tris-LED is a surgical light with exceptional performance and excellent versatility. It is particularly suitable for minor surgical procedures, gynaecology and emergency. The Light head is smaller in size than the PentaLED 9 and has four modular beams each with 7 LEDs. These are arranged in a radial pattern so as to eliminate shadows and provide deep three dimensional lighting.

FEATURES AND BENEFITS

- Steel arms, Powder coated finish, Autoclaveable handle
- individually wired boards and modules ensures uninterrupted operation
- Mounting options Wall, Trolley, Ceiling, Twin Ceiling



CRI 96
Colour Rendering Index



50,000hr
Lifetime

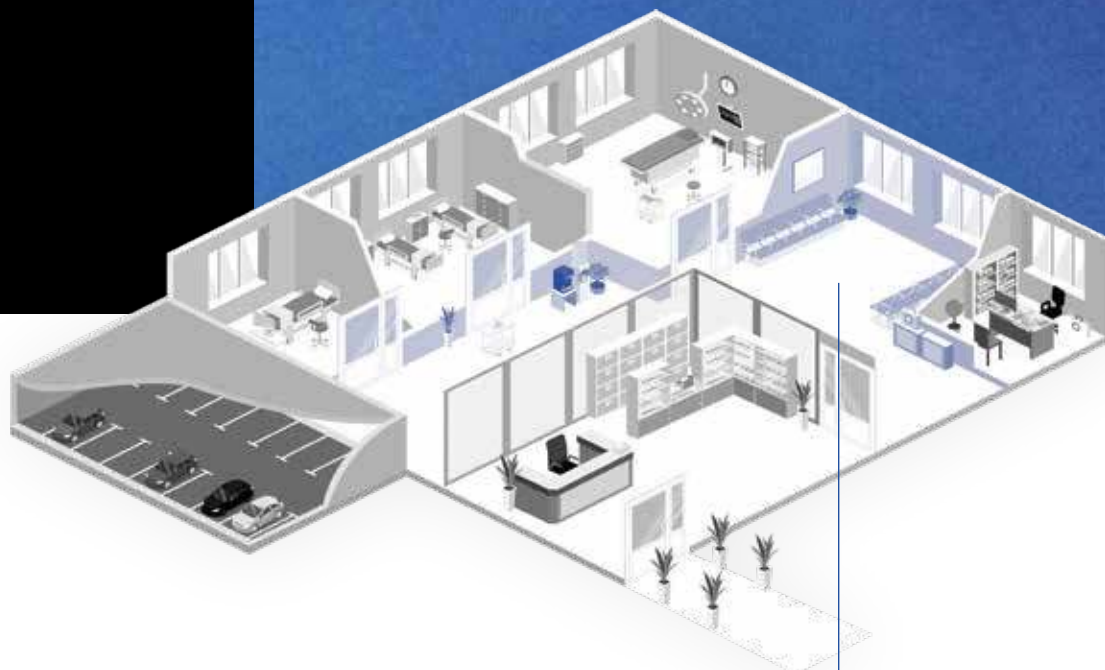


3 Year
Warranty

EFFICIENT NAVIGATION

GUIDED BY LIGHT





CORRIDOR / THOROUGHFARE

Pierlite combines visibility, infection control and energy-efficiency for ideal corridor lighting design.

Creating a clear path is a priority to assist people moving through a healthcare facility. Corridor lighting can be optimised to ensure patients, staff and visitors can easily orient themselves and find their way between departments and appointments.

With special needs and the ageing eye in mind, vertical lighting assists in illuminating directional signage, while glare control should be considered for the many patients who will be transported while lying on beds.

Off-center light positioning enhances visual comfort for all in circulation areas and maintains comfortable clarity twenty-four hours a day..



Dot Kimbal range



DLED 100
Profile



SIDE Jogger LED
Wall Light



AmbienZ LED
Troffer



DOT KIMBAL



Modularity and flexibility describe the Kimbal range engineered by DOT. With quality components, the Kimbal range is available in a number of colour temperatures, reflectors, beam angles, lumen packages, accessories, CRI and SDCM options.

Designed and constructed in NZ, the Kimbal range incorporates the very best features of the existing DOT Downlight range while taking advantage of the latest advances in LED.

The range has sustainability at its core: every element of a Kimbal engineered body is either recyclable or reusable and the range has been designed to enable replacement of electronic control gear or LED to uptake future technology and at end of life.



CRI 90
Colour
Rendering
Index



UGR 16-19
Unified Glare
Rating



Cyanosis
Compliant



2SDCM
MacAdam
Step Ellipse



75,000hr
Lifetime

DLED 100 PROFILE

The DLED 100 shares many of the features and function of our DLED2 troffer in a skinny 100mm linear profile. Using high fidelity LEDs with an opal optic providing a nice clean light perfect for corridors, pelmets, in and around the perimeter of spaces and areas. Remote driver ensures the longest possible lifetime of its LED components making it an ideal professional recessed diffused luminaire.

FEATURES AND BENEFITS

- Using the latest high efficacy and high-fidelity LEDs for low power consumption and superb colour rendering.
- Comes with an acrylic opal diffuser for comfortable lighting.
- Stocked in standard sizes 1200mm, 900mm and 600mm lengths for T-bar and plaster installations.



CRI 80
Colour Rendering Index



UGR 22
Unified Glare Rating



3SDCM
MacAdam Step Ellipse



IP54
Ingress Protection Rating (from below)



Slimline
Recessed

SIDE JOGGER LED WALL LIGHT

Indoor/Outdoor low level marker light, for walkways or hospital, aged care: Steel base structure and thermoplastic plate.

FEATURES AND BENEFITS

- Integrated LED driver 24Vdc output
- Stainless steel with concealed fixings
- 99.8% pure aluminium reflector



CRI 80
Colour Rendering Index



60°
Beam Angle



50,000hr
Lifetime



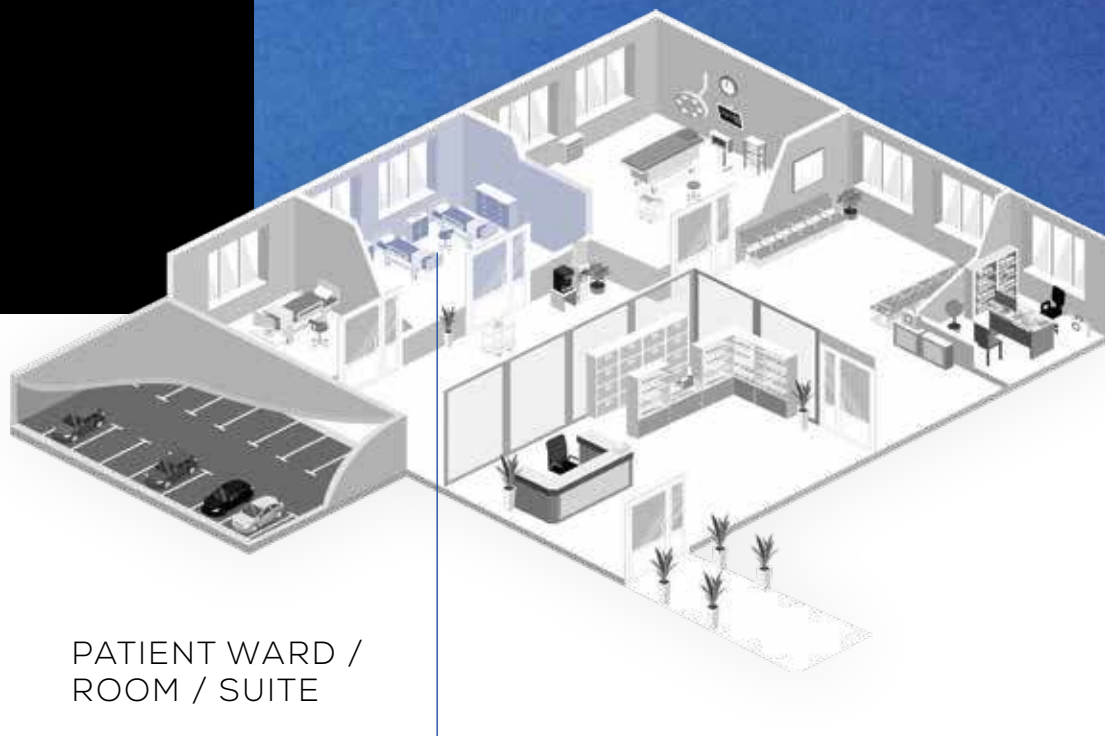
IP65
Ingress Protection Angle



IK10
Impact Rating

AMBIENT LIGHTING FOR **OPTIMAL RECOVERY**





Smart lighting design in patient wards has a direct impact on recovery times as well as individual comfort.

The healing power of light cannot be overstated. Create a relaxing environment for patients to rest and recuperate with lighting that is designed to reduce glare and enhance comfort.

Patients have control over their surroundings at all hours with a side wall jogger as a night light, as well as an overbed light with up/down flexibility and an integrated nurse call feature. The inclusion of DOT downlights provides high Colour Rendering Index lighting to support medical professionals during examinations.



Planet Lighting
Overbed Light



DLED3 Troffer



Fosnova Cortesia
Night Light



SIDE Jogger LED
Wall Light



Derungs Zera



Dot Downlight
range



Dot Kimbal range



PLANET LIGHTING OVERBED LIGHT

The Planet Lighting Overbed Light is a wall mounted LED over bed luminaire designed and manufactured in Australia with an elegant slimline design. It is “clean safe” for infection control and is highly configurable for a light distribution that suits you best.

FEATURES AND BENEFITS

- Top and bottom are tapered toward the front for asymmetric throw of light and easy cleaning
- Glare management options as well as Circadian Rhythm Control, Cyanosis compliance, dimming and Tunable White.
- IP65 easy to clean for infection control



CRI 90
Colour
Rendering
Index



IP65
Ingress
Protection
Angle



5 Year
Warranty

DLED 3 TROFFER

The professional Pierlite DLED 3 Troffer is designed for general areas and interiors with glare restrictions. Ideal for special projects providing a range of options to maintain consistent aesthetics, performance and excellence.

FEATURES AND BENEFITS

- Sturdy low profile steel body with polyester powder coat finish
- Remote flicker free driver, comes with flex and plug
- Using a microprismatic diffuser that offers a uniform low glare appearance



CRI 90
Colour Rendering Index



UGR 19
Unified Glare Rating



Cyanosis Compliant



72,000hr
Lifetime



IP54
Ingress Protection Rating

FOSNOVA CORTESIA NIGHT LIGHT

The Fosnova Cortesia is a recessed mounted LED night light designed for use in hospital wards. The night light provides optimum light levels with extremely low glare optics for maximum patient visual comfort. To be kept on all night, for transit areas, to serve as a courtesy light or ambient light.

FEATURES AND BENEFITS

- RAL 9010 in PC plastic material
- Spotlight with built-in driver that can be connected directly to the electricity supply network
- It can be installed on plasterboard walls using the mounting plate supplied as standard or with the junction box (not included)



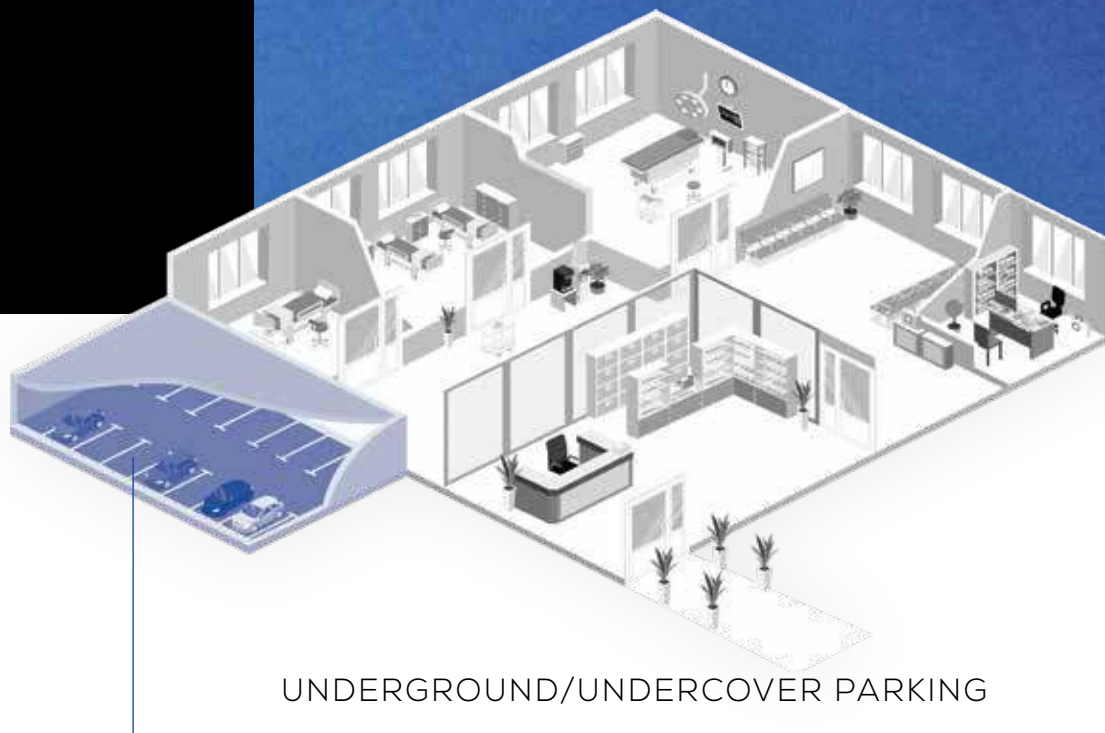
IP20
Ingress Protection Rating



IK08
Impact Rating

SECURE AND SAFE **CARPARK SOLUTIONS**





→ Programmable zones of light will reduce energy consumption while creating well-lit carparks 24/7.

Underground and covered parking areas can be dark and unnerving, especially at night. Considered lighting choices can brighten these spaces, maximising visibility for pedestrians and vehicles.

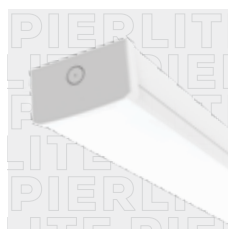
Convey a sense of safety for staff and visitors as they move to and from their car with weatherproof BWP Pro batten. This durable, long-life light fitting offers the ability to select the optimal lumen output to offer consistent, reliable lighting with a focus on greater coverage at entrances and exits.



BWP Pro 2 LED
Emergency
Weatherproof Batten



Vandalux LED
Lumen Select Gen 2



Nipper LED Batten



BWP PRO 2 LED EMERGENCY WEATHERPROOF BATTEN

The high output LED emergency weatherproof batten has longer life and the ability to select your preferred lumen output/wattage within one light fitting.

FEATURES AND BENEFITS

- Polycarbonate body with durable foam seal and frosted prismatic polycarbonate lens resists impact (IK08)
- Options: Standard and DALI , DALI Emergency, DALI Sensor with replaceable Lithium Iron Phosphate (LiFePO4) battery for Emergency code
- Supplied with stainless steel mounting clips for easy installation without compromising the IP65 integrity



72,000hr
Lifetime



IP65
Ingress
Protection
Angle



IK08
Impact
Rating



DALI
Monitoring
& Dimming



7 Year
Warranty

NIPPER LED BATTEN

COLOUR SELECT

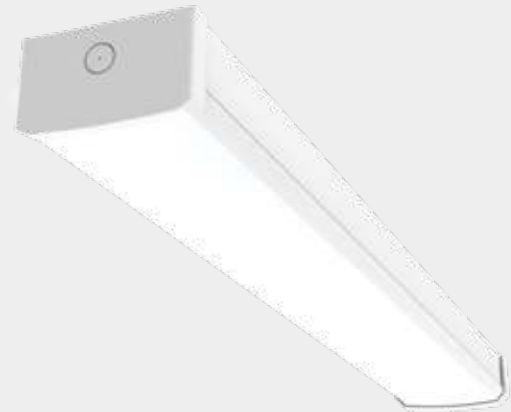
LUMEN SELECT™

The NIPPER is an efficient wide base LED linear batten designed in a sealed removable LED module and a white metal back plate with large terminal blocks for ease of installation.

The frosted diffuser is made from impact resistant material that produce a clean light, ideal for surface mount or suspended installations.

FEATURES AND BENEFITS

- Designed with a wide 130mm width base to easily replace old and energy consuming twin fluorescent battens
- Flicker free LED driver built-in for increased visual acuity and comfort
- Option for emergency with Lithium Iron Phosphate Battery 2.5W @ 350lm available



CRI 80
Colour Rendering Index



54,000hr
Lifetime



IP20
Ingress Protection Rating



4 Year
Warranty

VANDALUX LED LUMEN SELECT GEN 2

The Australian designed and engineered Vandalux adverse weatherproof range have a proven and trusted history of being tough for all levels of public areas including schools, transport and highly secured areas.

FEATURES AND BENEFITS

- Pressure die-cast LM6 marine grade aluminium body with a powder coated paint finish and robust frosted polycarbonate lens to resist impact and abuse with its lockable stainless steel clips on body
- Multiple wattages / lumen outputs in 1 fitting with Lumen Select
- Two sizes available 4FT (22W, 30W, 37W, 53W, 63W) and 2FT (16W, 20W, 28W, 33W)



60,000hr
Lifetime



IP66
Ingress Protection Rating



IK10
Impact Rating



DALI
Dimmable



5 Year
Warranty

SET THE TONE ON ARRIVAL AND DEPARTURE





AREA LIGHTING & EXTERNAL CARPAK

Correctly integrated exterior lighting is a key factor in creating a safe and secure outdoor carpark zone.

Staff, patients and visitors should feel at ease when arriving or departing a hospital or aged care facility. It is why external carpark lighting needs to provide adequate light, day and night.

External carparks are a shared space for cars and people coming and going, as well as congregating. Preventing windshield glare, maximising visibility and guiding the way for visitors on roads and pathways can all be achieved with intelligent lighting choices.



Siteco SL11



Siteco DL20



Start Bollard IP65



Siteco Litepole



Disano Rolle



Environ
Area Light



SIDE Verso Bollard



Disano Vista



Disano Como



SITECO SL11

The Streetlight 11 from SITECO— future-proof light for streets and roads, parking lots and outdoor areas in industry. Here, state-of-the-art LED technology, innovative lighting technology and trend-setting design combine to create a sustainable luminaire concept — modular, costconscious, energy-saving and always ready for even more.

FEATURES AND BENEFITS

- Rapid payback due to high energy savings
- Optimum visibility thanks to outstanding lighting technology
- Future-proof thanks to upgrade option on future LED generations



100,000hr
Lifetime



IP66
Ingress
Protection
Rating



IK09
Impact
Rating

SITECO DL20

The optical concept developed for the DL20 ensures differentiated lighting solutions for different street and square situations. This ensures that the lighting of troughand residential roads, car parks, parks and other open spaces, as well as cycle paths and footpaths, is consistently in line with standards and requirements. Thus a variable application with just one type of luminaire.

FEATURES AND BENEFITS

- Elegant design based on lantern-shaped luminaires with robust workmanship (IP66, IK08) and dirt-resistant toughened safety glass
- Optimum glare control even allows glare-free view into the luminaire
- Low-maintenance continuous operation of up to 100,000 hours



CRI 80
Colour
Rendering
Index



100,000hr
Lifetime



IP66
Ingress
Protection
Rating



IK08
Impact
Rating

START BOLLARD IP65

The new START Bollard IP65 is a modern take on the classic style bollard. Ideal for landscape lighting such as gardens, parks, pathways, and exterior commercial areas. The range is available in 0.5m and 1m with a robust IK10 rating.

FEATURES AND BENEFITS

- Contemporary designed bollard
- Die-cast aluminium body, available in black colour
- Polyester powder coating with special treatment for outdoor use



50,000hr
Lifetime



IP65
Ingress
Protection
Angle



IK10
Impact
Rating



Ta50
Operational
Temperature
Rating



5 Year
Warranty

A CLEAR PATH TO SAFETY





EXIT & EMERGENCY

Effective and reliable lighting is crucial to ensure staff, patients and visitors are guided to safety in the case of an emergency.

In healthcare, exit and emergency lighting is a vital consideration for every building, particularly in the case of a facility-wide hazard.

Emergency lights should clearly illuminate a secure path through a potentially hazardous environment – helping to efficiently navigate people to safety or the nearest exit.

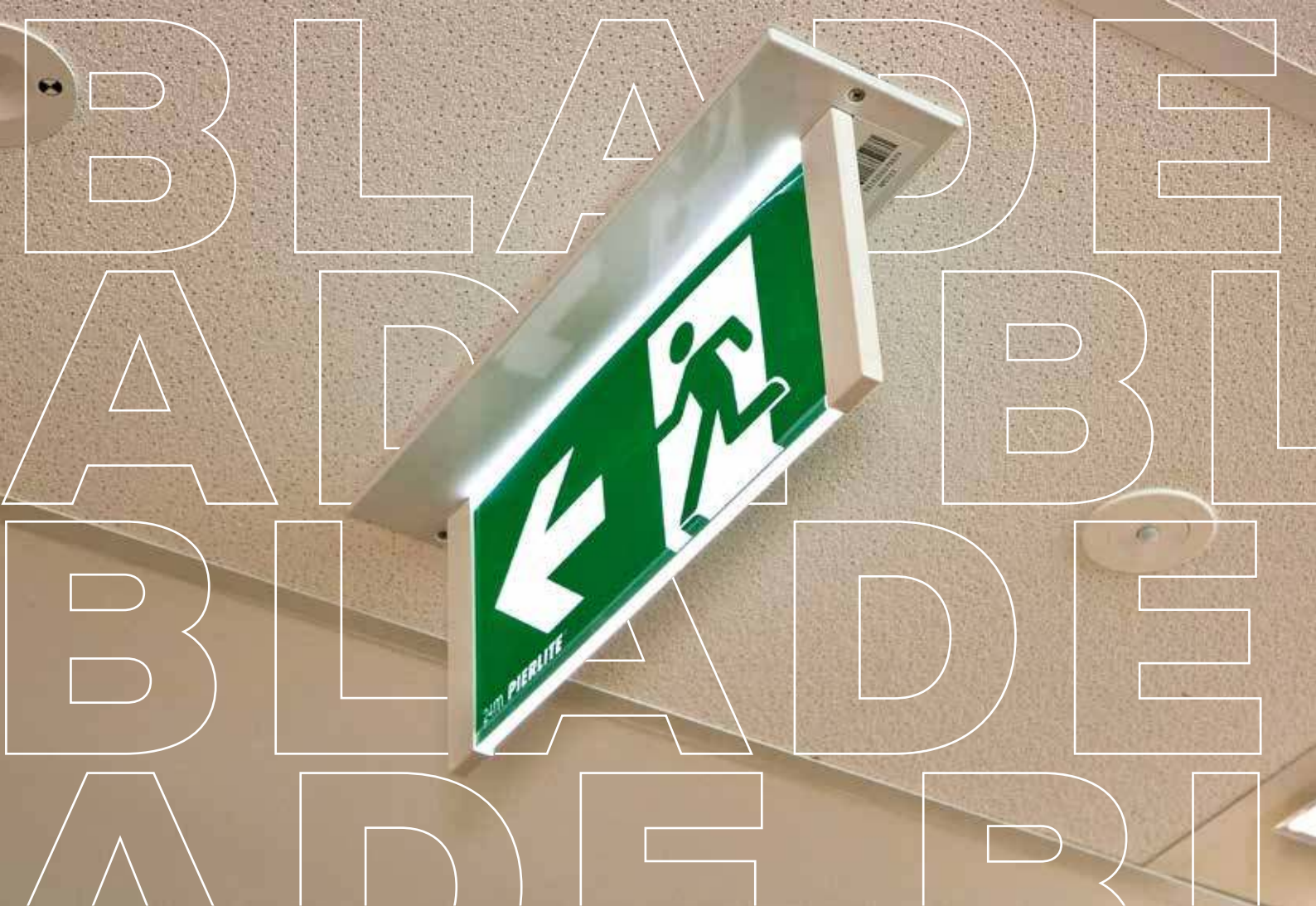
With careful attention to national safety standards, Pierlite offers comprehensive emergency lighting solutions.



Blade 2 LED
Exit Light



Pathfinder 2 LED
Emergency Light



BLADE 2 LED EXIT LIGHT

The Blade 2 LED Exit Light is a premium exit sign. Stylish and energy efficient, this LED exit luminaire is designed for applications where aesthetics is important - commercial buildings, hotels, retail, cinema complexes, apartments and hospitals.

FEATURES AND BENEFITS

- Flexible for ceiling or wall mounting with an optional recessed kit (order separately)
- Complete with replaceable lithium iron phosphate (LiFeP04) battery
- Includes all pictogram inserts and one box solution with a fully integrated assembly makes for easier installation



50,000hr
Lifetime



DALI
Monitoring



LiFeP04
Battery



Ta40
Operational
Temperature
Rating



4 Year
Warranty

PATHFINDER 2 LED EMERGENCY LIGHT

The Pathfinder 2 LED Emergency Light is a high performance, energy efficient luminaire providing omnidirectional coverage in applications such as office spaces, correctional facilities, fire passages, retail centres, aged care and hospitality.

FEATURES AND BENEFITS

- Recessed mount with an optional surface mount kit (white and black versions)
- Replaceable Lithium Iron Phosphate (LiFeP04) battery
- Flex and plug included for easy installation



50,000hr
Lifetime



DALI
Monitoring



LiFeP04
Battery



Ta40
Operational
Temperature
Rating



4 Year
Warranty





A WORLD OF BENEFITS

Connected lighting opens up a world of opportunities for smart buildings by integrating lighting and information systems. However, real savings and benefits can be achieved by pairing a sensor with every light fitting.

With a combination of best-in-class luminaires, smart sensors and world-leading Internet of Things (IoT) technology providers, Pierlite Connect's new generation of smart building solutions delivers customers with greater control and advanced data analytics.

Using these data insights, customers are able to optimise their environments while delivering better outcomes for occupants.



SENSORS AND CONTROLS

FOR HEALTHIER ENVIRONMENTS

Our connected lighting platform delivers healthcare providers with advanced data insights to help them optimise their environments, from improving patient outcomes through to mitigating risks.

Key Benefit Areas

Asset Monitoring

- Easy tracing and recovery of assets saves staff time
 - Asset temperature monitoring can result in increased safety thanks to real-time alerts
 - Protection of high-use devices from overheating and breakdowns
-

People Tracking

- Centralized remote monitoring saves staff resources
 - Automatically identify high traffic to allocate extra staff, increase security, boost housekeeping
 - Prevent the risk of patients injuring themselves or getting lost
-

Light & Energy

- Reduce staff errors with adequate lighting conditions
 - Optimize energy consumption across the building
 - Help patients keep normal sleeping patterns while in hospital with circadian-based lighting
 - Gain full visibility into energy consumption
-

Air Quality & Microclimate

- Identify major contaminant sources and timely address issues
 - Accommodate different temperature preferences of patients
 - Additional monitoring in positive / negative pressure areas for potential leaks
-

Outbreak control

- Monitor social distancing for increased visitor and staff safety
 - Assists with contact tracing for accurate tracking of interactions with historical data and reports available within minutes
-

NEW SOUTH WALES
NATIONAL HEAD OFFICE

Phone: 1300 799 300 | Fax: 1300 789 300
96-112 Gow Street, Padstow NSW 2211
Postal Address: PO BOX 314 Padstow NSW 2211

QUEENSLAND

Phone: 1300 799 300 | Fax: 1300 789 300
54 Berwick Street, Fortitude Valley QLD 4006
Postal Address: PO Box 500 Fortitude Valley QLD 4006

VICTORIA/TASMANIA

Phone: 1300 799 300 | Fax: 1300 789 300
1/768 Lorimer Street, Port Melbourne VIC 3207

SOUTH AUSTRALIA/NORTHERN TERRITORY

Phone: 1300 799 300 | Fax: 1300 789 300
Level 2, 191 Fullarton Rd, Dulwich SA 5065

WESTERN AUSTRALIA

Phone: 1300 799 300 | Fax: 1300 789 300
77 Truganina Road, Malaga WA 6090
Postal Address: PO Box 2046 Malaga, WA 6944



1300 799 300 | PIERLITE.COM.AU

Pierlite is a registered trademark of Gerard Lighting Pty Ltd ©Copyright Pierlite 2021. Gerard Lighting Pty Ltd and all directly related legal entities reserve the right to alter the specifications, designs or other features of any items herein and to discontinue any items at any time without notice and without liability.