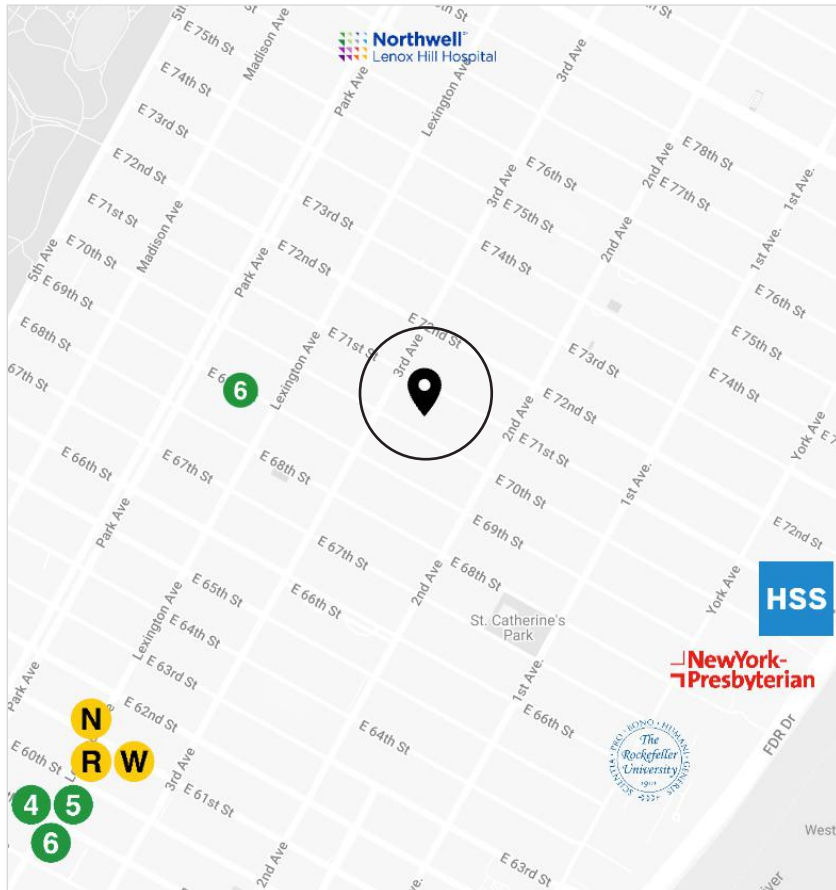


# GROUND FLOOR **MEDICAL OFFICE** FOR LEASE

PRICE	INQUIRE
APPROX SIZE	2,276+/- RSF
TERM	NEGOTIABLE
POSSESSION	IMMEDIATE



**211 EAST 70TH STREET, GF**  
BETWEEN 2ND AND 3RD AVENUE



## MEDICAL TEST FIT LAYOUT

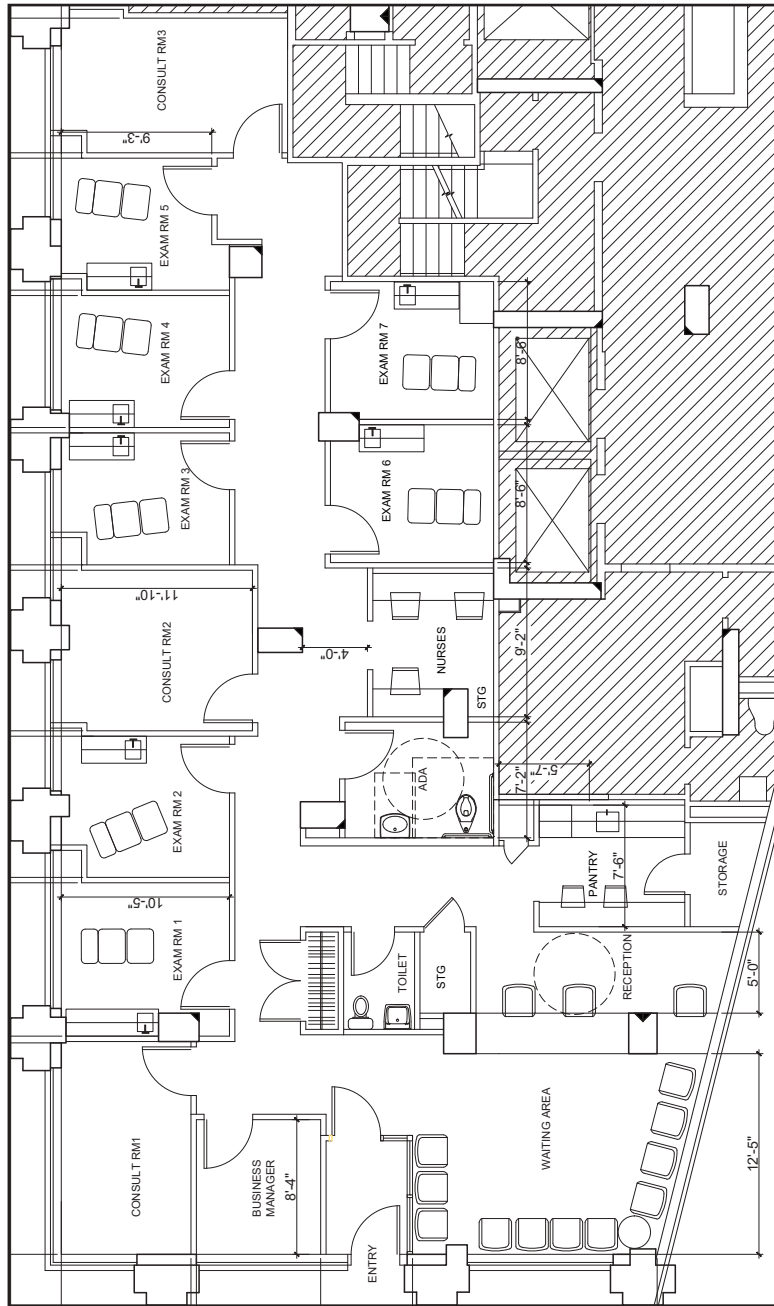
- WAITING ROOM
- RECEPTION
- SEVEN EXAM ROOMS
- NURSES' STATION
- THREE OFFICES/CONSULTS
- ADMIN OFFICE
- TWO STORAGE CLOSETS
- TWO RESTROOMS (ONE ADA)

## ADDITIONAL FEATURES

- PRIVATE STREET ENTRANCE EAST 70TH STREET
- WINDOWS FACING 70TH STREET AND COURTYARD
- CENTRAL AIR CONDITIONING
- ADAPTABLE TO ANY MEDICAL SPECIALTY



## MEDICAL TEST FIT



FLOOR PLAN FOR ILLUSTRATIVE PURPOSES ONLY



### Paul L Wexler

LICENSED ASSOCIATE  
REAL ESTATE BROKER

P: 212.836.1075  
E: PWexler@corcoran.com

### Josef Yadgarov

LICENSED ASSOCIATE  
REAL ESTATE BROKER

P: 212.836.1097  
E: josef.yadgarov@corcoran.com

### Alisia Ramlochan

LICENSED ASSOCIATE  
REAL ESTATE BROKER

P: 212.893.1450  
E: alisia.ramlochan@corcoran.com

### Cosmin Bitu

LICENSED REAL ESTATE  
SALESPERSON

P: 917.602.5754  
E: cosmin.bitu@corcoran.com

### Kurt Herold

LICENSED ASSOCIATE  
REAL ESTATE BROKER

P: 212.323.3817  
E: kherold@corcoran.com