



Learning Partners
academy trust

2024/25 CPLD Programme

JANUARY 2025



Welcome!

Welcome to our Continuous Professional & Leadership Development (CPLD) brochure, tailored specifically for Learning Partners Academy Trust & Learning Partners Church Academy Trust.

We are dedicated to fostering a culture of excellence and lifelong learning within our community. This brochure is designed to provide you with a comprehensive overview of the diverse CPLD opportunities available to support your professional growth and development.

Together, we strive to create an inspiring and supportive environment. We look forward to working with you.

Kathryn, Andrew & Helen
Directors of Education



Contents - Courses & Networks

| DATE | PROGRAMME | | | PAGE |
|--------------------|-------------------------------------------------------------|------|---------|-----------|
| SPRING TERM | | | | |
| 13 JAN 25 | Maths Network | P | NETWORK | <u>10</u> |
| 15 JAN 25 | Colourful Semantics | P, S | COURSE | <u>35</u> |
| 16 JAN 25 | EYFS Network | P | NETWORK | <u>24</u> |
| 20 JAN 25 | ECT Network | P | NETWORK | <u>16</u> |
| 20 JAN 25 | Secondary English Network | S | NETWORK | <u>44</u> |
| 29 JAN 25 | Writing Network | P | NETWORK | <u>14</u> |
| 03 FEB 25 | Primary Phase Leaders Network | P | NETWORK | <u>18</u> |
| 04 FEB 25 | New to Role - SEND focus & Introduction to CPOMS | P,S | COURSE | <u>9</u> |
| 04 FEB 25 | Subject Leadership - the Essentials : Monitoring & Feedback | P, S | COURSE | <u>23</u> |
| 04 FEB 25 | RE Network | P | NETWORK | <u>12</u> |
| 06 FEB 25 | Deputy Head & Assistant Heads Group | P | NETWORK | <u>22</u> |
| 06 FEB 25 | Middle Leader Professional Learning & Development | S | NETWORK | <u>19</u> |

Key:-

P -


Primary

S -

Secondary

3

Contents - Courses & Networks

| DATE | PROGRAMME | | | PAGE |
|--------------------|------------------------------------------------------------------------------------------------------------------------------------|------|---------|-----------|
| SPRING TERM | | | | |
| 06 FEB 25 | Teaching & Learning Leaders Forum | S | NETWORK | <u>20</u> |
| 10 FEB 25 | Enhancing Writing Skills in the Primary School - Modelling Writing & Editing | P | COURSE | <u>21</u> |
| 11 FEB 25 | Year 1 Network  | P | NETWORK | <u>38</u> |
| 13 FEB 25 | DT - CAD & Microbits | P | COURSE | <u>36</u> |
| 25 FEB 25 | Outdoor Learning & Forest Leaders Network | P | NETWORK | <u>11</u> |
| 26 FEB 25 | Reading Network | P,S | NETWORK | <u>28</u> |
| 27 FEB 25 | SENDCO Network | P,S | NETWORK | <u>31</u> |
| 03 MAR 25 | ECT Network | P | NETWORK | <u>16</u> |
| 04 MAR 25 | Effective Leadership for Aspiring Leaders Established Subject Leaders - Dealing with Challenges & Underperforming Colleagues | P, S | COURSE | <u>17</u> |
| 06 MAR 25 | History Network | P | NETWORK | <u>37</u> |
| 06 MAR 25 | Deputy Heads Professional Learning & Leadership Group | S | NETWORK | <u>25</u> |

Key:-

P -

Primary

S -

Secondary

Contents - Courses & Networks

| DATE | PROGRAMME | | | PAGE |
|--------------------|---------------------------------------------------------------------------------------------------|------|---------|--------------------|
| SPRING TERM | | | | |
| 11 MAR 25 | Science Network | P | NETWORK | 13 |
| 12 MAR 25 | Writing Moderation Years 1-6 | P | NETWORK | 33 |
| 12 MAR 25 | Writing Moderation EYFS | P | NETWORK | 34 |
| 13 MAR 25 | Writing Network | P | NETWORK | 14 |
| 13 MAR 25 | Middle Leader Professional Learning & Development | S | NETWORK | 19 |
| 13 MAR 25 | Teaching & Learning Leaders Forum | S | NETWORK | 20 |
| 17 MAR 25 | Art Network | P | NETWORK | 39 |
| 18 MAR 25 | HSLW Network | P, S | NETWORK | 30 |
| 18 MAR 25 | Geography Network | P | NETWORK | 26 |
| 20 MAR 25 | EAL Network | P, S | NETWORK | 27 |
| 25 MAR 25 | Inspiring Young Poets - The Teaching of Poetry | P | COURSE | 40 |
| 27 MAR 25 | DSL Network | P, S | COURSE | 32 |
| 01 APR 25 | Year 1 Network  | P | NETWORK | 38 |
| 03 APR 25 | Mastering Non-Fictional Writing | P | COURSE | 41 |

Key:-

P - **Primary**

S - **Secondary**

Contents - Courses & Networks


| DATE | PROGRAMME | | | PAGE |
|--------------------|-----------------------------------------------------------------------------------------------------|------|---------|-----------|
| SUMMER TERM | | | | |
| 25 APR 25 | Subject Leadership - the Essentials : Teaching & Learning | P, S | COURSE | <u>23</u> |
| 28 APR 25 | Challenging Conversations | P, S | COURSE | <u>42</u> |
| 28 APR 25 | ECT Network | P | NETWORK | <u>16</u> |
| 29 APR 25 | Deputy Head & Assistant Heads Group | P | NETWORK | <u>22</u> |
| 06 MAY 25 | Maths Network | P | NETWORK | <u>10</u> |
| 07 MAY 25 | Supporting Students with Self Harm | P, S | COURSE | <u>43</u> |
| 08 MAY 25 | Primary Phase Leaders Network | P | NETWORK | <u>18</u> |
| 08 MAY 25 | Teaching & Learning Leaders Forum | S | NETWORK | <u>20</u> |
| 08 MAY 25 | Middle Leader Professional Learning & Development | S | NETWORK | <u>19</u> |
| 13 MAY 25 | Year 1 Network  | P | NETWORK | <u>38</u> |
| 15 MAY 25 | EYFS Network | P | NETWORK | <u>24</u> |
| 19 MAY 25 | Effective Leadership for Aspiring Leaders Established Subject Leaders - Effective Implementation | P, S | COURSE | <u>17</u> |

Key:-

P - **Primary**

S - **Secondary**

Contents - Courses & Networks

| DATE | PROGRAMME | | | PAGE |
|--------------------|--------------------------------------------------------------------------------------------------|------|---------|-----------|
| SUMMER TERM | | | | |
| 20 MAY 25 | Reading Network | P, S | NETWORK | <u>29</u> |
| 22 MAY 25 | SENDCO Network | P, S | NETWORK | <u>31</u> |
| 04 JUN 25 | Writing Moderation | P | COURSE | <u>33</u> |
| 12 JUN 25 | Deputy Heads Professional Learning & Leadership Group | S | NETWORK | <u>25</u> |
| 17 JUN 25 | Year 1 Network  | P | NETWORK | <u>38</u> |
| 19 JUN 25 | Deputy Head & Assistant Heads Group | P | NETWORK | <u>22</u> |
| 23 JUN 25 | ECT Network | P | NETWORK | <u>16</u> |
| 26 JUN 25 | Teaching & Learning Leaders Forum | S | NETWORK | <u>20</u> |
| 26 JUN 25 | Middle Leader Professional Learning & Development | S | COURSE | <u>19</u> |
| 02 JUL 25 | HSLW Network | P, S | NETWORK | <u>30</u> |

Key:-

P -

Primary

S -

Secondary

Contents - Courses & Networks

| DATE | PROGRAMME | | | PAGE |
|------|-----------|--|--|------|
|------|-----------|--|--|------|

SUMMER TERM

| | | | | |
|-----------|-------------|------|---------|-----------|
| 09 JUL 25 | DSL Network | P, S | NETWORK | <u>32</u> |
| 14 JUL 25 | ECT Network | P | NETWORK | <u>16</u> |

OTHER DEVELOPMENT OPPORTUNITIES

| | | | | |
|---------|--------------------------------------------|------|--------|-----------|
| VARIOUS | National Professional Qualifications (NPQ) | P, S | COURSE | <u>45</u> |
| VARIOUS | Schools Alliance for Excellence (SAFE) | S | COURSE | <u>46</u> |
| VARIOUS | SIAMS Training & Support - LPCAT Schools | P | COURSE | <u>47</u> |

Key:-

P -

Primary

S -

Secondary



SUITABLE FOR:

This training is designed for teacher, ECTs, TAs and LSAs, who are new to the role and new to working in a school

Facilitated by Olivia Wernick, Trust Inclusion Lead & Holly Wise, Trust Safeguarding & Mental Health Lead

Primary

Secondary

New to Role – SEND focus & Introduction to CPOMS

This interactive session will cover the following key topics :-

- How to work with children in the classroom who have additional needs
- The SEND Code of Practice 2015, including the model of the Assess, Plan, Do, Review Cycle and the four categories of need. Including what your role is as Teacher and TA
- Research around TAs and best practice for the use of TAs/LSAs
- Guide to using CPOMS
- SEND Code of Practice
- Types of SEND Need, categories of need
- Piaget's Learning Theory
- Vygotsky's Learning Theory
- Zone of Proximal Development
- Scaffolding and Differentiation

Please note a laptop/suitable device will be required on the day to access resources. Mobile phone is not sufficient

This session will run on:

04 Feb 2025 0930-1230 at
George Abbot – CANCELLED



Sign Up





SUITABLE FOR:

This training is designed for Maths Leads

Facilitated by Mili Daly & Chloe Jackman

Primary

Maths Network

Session - 13 Jan 2025

We will discuss effective assessment methods for times tables in our schools, identifying common systems for tracking and monitoring student progress. Chloe, Tillingbourne Junior School's Maths lead, will share their assessment approach and its effectiveness. We will address strategies for supporting students who are not meeting the expected standards in Maths, aiming to develop trust-wide practices. Participants will also explore effective times tables teaching strategies to try in their classrooms.

Session - 06 May 2025

Examining how to teach each specific set of times tables, focusing on supporting each year group to plan and teach effectively with fun, engaging methods like songs, games, and activities.

We will discuss strategies for supporting the lowest 20% of students, including scaffolding and Maths interventions.

We will also explore ways to encourage parental engagement in Maths, generating ideas to share with schools via newsletters or websites. Participants will learn effective times tables teaching strategies to implement in their classrooms.

These sessions will run on:

13 Jan 2025 1315-1545

06 May 2025 1315-1545

Venue: Tillingbourne Junior School



Sign Up





SUITABLE FOR:

This training is designed for Outdoor Learning Leads, Forest Leaders & Assistants, Geography Leads or other teachers who are passionate about taking more learning outside across the school.

Facilitated by Jessica Lamb, Burpham Primary

Primary

Outdoor Learning & Forest Leaders Network

Group members will be invited to suggest areas of focus for prior to this session.

These could include:

- Monitoring outdoor learning
- What is The Learning Partners' Vision for outdoor learning?
- The Sustainability and Climate Change Strategy
- Effective leadership of outdoor learning
- Forest School vs teacher-led outdoor learning

Teaching for wellbeing outdoors

This session will run on:

25 Feb 2025 1300-1600 at Northmead Junior School



Sign Up





SUITABLE FOR:

This network is designed for RE leads

Facilitated by Lucy Dorrington & Carlota Reviriego

Primary

RE Network

The KPIs developed in the previous session will guide the creation of various assessment tools and methods. These assessments will be designed to evaluate how well students are meeting the established KPIs, thereby ensuring that the learning objectives of the RE Surrey Syllabus are being achieved.

The collaborative nature of this session aims to foster a sense of shared ownership and commitment among educators, which is crucial for the successful implementation and ongoing refinement of the syllabus.

This session will run on:

4 Feb 2025 1315-1545

****POSTPONED DATE TBC****

Venue: Tillingbourne Junior School



Sign Up





SUITABLE FOR:

This network is designed for Science Leads.

This session will be facilitated by Abi Rudall, Assistant Headteacher at Boxgrove Primary School

Primary

Science Network

Focus : EYFS Engagement

This session is designed to prioritise and enhance high-quality science opportunities specifically tailored for Early Years Foundation Stage (EYFS) pupils, employing the continuous provision model as its framework.



This sessions will run on:

11 Mar 2025 1315-1530 at
Boxgrove Primary School -
cancelled



Sign Up





Writing Network

Session 29 Jan 2025: This session will be used to finalise the writing assessment framework & establish clear, consistent guidelines across the Trust. It is crucial to attend this session.

Session 13 Mar 2025 : We will explore the innovative use of Artificial Intelligence (AI) in supporting the planning and development of writing units.

Discover how AI tools can enhance, extend, and refine the delivery of writing curriculum in the classroom. Gain insights into leveraging AI to elevate writing instruction and achieve enhanced learning outcomes.



These sessions will run on:

29 Jan 2025 1300 1600
Venue: Kings College Central
Team Meeting Room

13 Mar 2025 1315-1600
****Revised date & Revised
Venue: Kings College Central
Team Meeting Room**

SUITABLE FOR:

This training is designed for Writing Leads

Facilitated by Shane Vickery, Writing Lead at Stoughton Infant School & Rachel Hughlock, Primary Practice Development Lead

Primary



Sign Up





SUITABLE FOR:

This training is designed for all staff

Pre-recorded webinar by Lee Parkinson, Owner of Mr P ICT

INSET

Primary

Mr P ICT

In an upcoming recorded webinar, Mr P ICT will showcase a variety of innovative tools designed to help teachers reduce their workload through the power of artificial intelligence.

This session aims to empower educators by introducing them to AI-driven solutions that streamline administrative tasks and lesson planning, allowing more time to focus on teaching. Additionally, Mr. P ICT will demonstrate a selection of interactive tools that can be used directly in the classroom to enhance student engagement and make learning experiences more dynamic and captivating.

This session will be available from the end of January 2025.

The recording can be used on the Trust Inset afternoon on the 30 Jun 2025 or during a staff meeting at the discretion of the Headteacher

INSET

Venue: Own school





SUITABLE FOR:

This training is designed for ECTs & ECTIs

Facilitated by Alison Fitch, Headteacher and Sophie Watts, Upper School Leader & SLT member at Boxgrove Primary School.

Primary

ECT Network

Participants in this group will meet throughout the year to share best practice and discuss issues arising in their early careers.

Group members will be able to suggest areas of focus for the sessions - previous key themes have included:

- Workload management
- Well being
- Assessment
- Career progression
- Resilience
- Difficult conversations

Please plan to attend all of the sessions to gain the maximum benefit from this network group.

These sessions will run on:

20 Jan 2025 1430-1630
03 Mar 2025 1430-1630
28 Apr 2025 1430-1630
23 Jun 2025 1430-1630
14 Jul 2025 1600-1700

Venue: Boxgrove Primary School



Sign Up





SUITABLE FOR:

This training is designed for aspiring leaders & established subject leaders with the skills, knowledge & strategies needed to be effective with driving improvements

Facilitated Rachel Hughlock,
Primary Practice Development
Lead

***Session suitable for all staff
including non teaching staff.**

Primary

Secondary

Effective Leadership for Aspiring Leaders & Established Subject Leaders

Session – 04 Mar 2025* Dealing with Challenges and Underperforming Colleagues

This session focuses on equipping participants with practical techniques and tools to effectively manage challenging conversations and support underperforming colleagues. By fostering a constructive and empathetic approach, attendees will learn how to address performance issues, provide actionable feedback, and create an environment conducive to professional growth and improvement.

Session – 19 May 2025 Strategies for Effective Implementation of New Initiatives

This session provides a guide to the implementation cycle, offering participants the knowledge and tools needed to successfully implement new initiatives within their organisations. From initial planning to evaluation and refinement, attendees will learn step-by-step strategies to ensure that new projects are effectively integrated and sustained.

These sessions will run on:

04 Mar 2025 1315–1530 –

****Cancelled****

19 May 2025 1315–1530

****Cancelled****

Venue: Boxgrove Primary
School



Sign Up





SUITABLE FOR:

This training is designed for Primary Phase Leaders

Facilitated by Rachel Hughlock, Trust Primary Development Leader

Primary

Primary Phase Leaders Network

This network is designed to enhance leadership & management skills. Each session begins with a tour around the school, allowing participants to magpie ideas and share best practices. Sessions incorporate focused CPLD on effective leadership & developing management skills to ensure teams run efficiently. Join us to gain valuable insights and practical strategies for driving success in your educational setting.

Objectives are:-

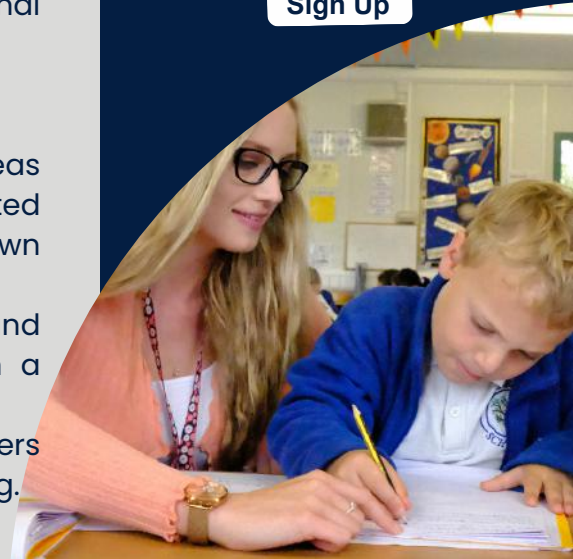
- to gather innovative ideas ("magpieing") that can be adapted & implemented in participants' own schools.
- to enhance leadership skills and pedagogical knowledge through a targeted CPD session.
- to foster a network of phase leaders for ongoing support & idea sharing.

These sessions will run on:

03 Feb 2025 1315-1600 at
Tillingbourne Junior School
08 May 2025 1315-1600 at
Stoughton Infant & Nursery



Sign Up





SUITABLE FOR:

This training is designed for aspiring & new to Middle Leadership staff with curriculum or pastoral responsibilities

Facilitated by Michele Miller, Consultant for Secondary School Improvement Leadership, Learning & Development

Secondary

Middle Leader Professional Learning & Development

The Learning Partners Middle Leader Development Programme is designed to support aspiring or new to role curriculum or pastoral leaders. The programme will run half termly over the course of the year, giving participants the opportunity to practice and grow their leadership expertise over time.

Participants will work on a specific change that needs to be made with the team that they lead. If the colleague is not yet in a leadership role, they will be able to identify a project to work on during the course of the programme.

The programme will support and develop participants to lead change by understanding how to lead people whilst implementing change. Sessions are in person, and attendance at every session is compulsory.

These sessions will run on:

06 Feb 2025 1400–1600 at Kings College

13 Mar 2025 1400–1600 at Loseley Fields Primary School

08 May 2025 1400–1600 at Loseley Fields Primary School

26 Jun 2025 1400–1600 at Loseley Fields Primary School



Sign Up





SUITABLE FOR:

This training is designed for Secondary Teaching & Learning Leads

Facilitated by Michele Miller, Consultant for Secondary School Improvement Leadership, Learning & Development

Secondary

Teaching & Learning Leaders Forum

The Teaching & Learning Leaders Forum aims to bring together and support colleagues responsible for the leadership of Secondary phase T&L across the Trust.

This forum provides an opportunity to share thinking, learn about current research and review impact through peer support and challenge.

Sessions are hosted by each of our schools in turn, creating the opportunity for peer learning, support and challenge.



Sign Up

These sessions will run on:

06 Feb 2025 0900–1130 at Glebelands

13 Mar 2025 0900–1130 at Guildford County

08 May 2025 0900–1130 at Fullbrook

26 Jun 2025 0900–1130 at Surrey Maths School





SUITABLE FOR:

This training is designed for all Yr 2-6 teachers

Facilitated by Rachel Hughlock, Primary Practice Development Lead

Primary

Enhancing Writing Skills in the Primary School

Modelling writing by creating an exemplar & editing strategies to reduce cognitive overload

One of the most effective strategies for improving writing is modelling; however, it can be challenging to pitch it correctly while incorporating grammar, punctuation, and effective composition. The second part of this session will concentrate on strategies for teaching editing, emphasizing the importance of making students active participants in their learning and maintaining their focus. By doing so, we aim to reduce cognitive overload and help students internalise the skills necessary for effective writing.

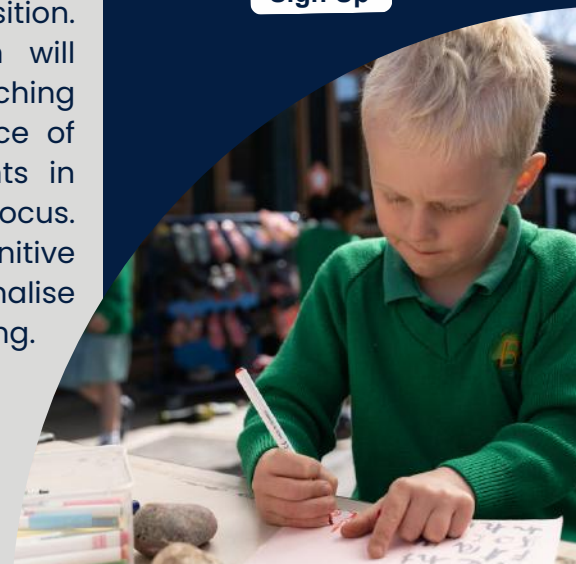
These sessions will run on:

10 Feb 2025 1315-1600

Venue: Kings College – Central Team Meeting Room



Sign Up



Deputy Head & Assistant Heads Group

**6 Feb 2025 - led by Alison Fitch & Rebecca Stacey, Co-Headteachers
Boxgrove**

Creating a positive culture & dealing with energy vampires

29 Apr 2025 - led by Jo White, Headteacher Burpham

How to gain buy in from staff, influence change & have impact

19 Jun 2025

Topic for discussion will be decided collectively during the course of the year

Please plan to attend all 4 sessions to gain maximum benefit from this group

These sessions will run on:

06 Feb 2025 0930-1130 at Boxgrove Primary School
29 Apr 2025 0830-1030 at Kings College - Central Team Meeting Room ****new venue****
19 Jun 2025 0830-1030 at Tillingbourne Junior School



Sign Up



SUITABLE FOR:

This group is designed for all Primary Deputy Heads & Assistant Heads

Facilitated by the Headteacher leading the session

Primary



SUITABLE FOR:

This training is designed for anyone who is new to subject leadership or has recently taken on this role

Facilitated by Rachel Hughlock, Primary Practice Development Lead

Primary

Secondary

Subject Leadership – the Essentials

Session – 04 Feb 2025

Monitoring and Feedback Basics

- Importance and cycle of monitoring, methods and tools, data analysis.
- Effective strategies for providing constructive feedback

Session – 25 Apr 2025

Enhancing Teaching and Learning

- Strategies for common leadership challenges, problem-solving, building resilience
- Focus on PP/SEND, improving teachers' skills, implementing best practices.
- SOAP (Subject On A Page): Creating a concise subject overview, key elements, communicating strengths and progress.

These sessions will run on:

04 Feb 2025 1315–1530 Kings College

25 Apr 2025 1315–1530 Boxgrove Primary



Sign Up



EYFS Network

Session – 16 Jan 2025

General findings from the ‘Strong Foundations in the First Years of School’ and the impact on EYFS practise moving forward. (In response to previous online task)

Session – 15 May 2025

Continue collaborating to create a skills progression document for writing, incorporating insights from recent research. Your attendance at this network is crucial, as your input is essential for developing a progression in skills document. This will then help when it comes to moderations next year

These sessions will run on:

16 Jan 2025 1600–1730 at
Stoughton Infant & Nursery
15 May 2025 1600–1730 at
Boxgrove Primary School



Sign Up



SUITABLE FOR:

This network is designed for class teachers & EYFS Leaders in Reception & Nursery.

Facilitated by Gaby Jones EYFS Assistant Headteacher at Guildford Grove & Sophie Murray, EYFS & Phase Lead at Pyrford Primary

Primary



Deputy Heads Professional Learning & Leadership Group

The Learning Partner Secondary Deputy Head Professional learning group meets termly. Sessions provide the opportunity for this group to collaborate, learn, support and challenge each other as they live their senior leadership in our schools.

Sessions will be a platform to celebrate successes, share excellent practice, and to grow in leadership by dedicating time to learn, reflect and plan for next steps.

Deputies are invited to join one of two groups, (0800-1000 or 1400-1600 on the same day) with their peer school Deputy joining the other. This is to mitigate the impact of leaders being out of school at the same time.

SUITABLE FOR:

This group is designed for all Secondary Deputy Heads

Facilitated by Michele Miller, Consultant for Secondary School Improvement Leadership, Learning & Development

Secondary

These sessions will run on:

Group 1

06 Mar 2025 0800-1000 at Glebelands
12 Jun 2025 0800-1000 at Guildford County

Group 2

06 Mar 2025 -please attend morning session 0800-1000at Glebelands if possible ****UPDATE****
12 Jun 2025 1400-1600 at Kings College - central team meeting room



Sign Up





SUITABLE FOR:

This network is designed for Geography Leads

Facilitated by
Claire Pasculotti & Emma Brockway

Primary

Geography Network

Session - 18 Mar 2025

Climate Change

This session will provide subject leaders with an opportunity to discuss how climate change features in our school progression maps talking about which year groups cover the topic and what best practice looks like. This session will also provide the chance to look at what 'expected' looks like in Geography and an opportunity to complete a book look together.

This session will run on:

18 Mar 2025 1315-1530 at
Boxgrove Primary School



Sign Up





SUITABLE FOR:

This network is designed for EAL Leads

Facilitated by Rachel Hughlock, Primary Practice Development Lead

Primary

Secondary

EAL Network

The EAL Networks for primary and secondary colleagues is designed to provide educators with a comprehensive toolkit to enhance language teaching and support student acquisition

Session - 20 Mar 2025

The EAL Network provides educators with essential strategies to support EAL students in the classroom. Following on from last year, further practical methods and strategies will be shared to make learning more accessible, ensuring that teachers can effectively scaffold learning and address the unique needs of EAL students.

These sessions will run on:

20 Mar 2025 1315-1600

Venue: Pyrford Primary School



Sign Up





SUITABLE FOR:

This network is designed for Subject Leaders in reading.

Facilitated by Rachel Hughlock, Primary Practice Development Lead & Leah Crawford, Educational Consultant

Primary

Secondary

Reading Network

Session – 26 Feb 2025 – Lets think approach

This half-day taster session will provide an insight into the powerful effect of the Let's Think approach (previously known as Cognitive Acceleration) by providing an overview of the PD programme and materials and observing a live lesson.

Let's Think in English at Primary is a teaching programme created at King's College London. It consists of a suite of high-interest lessons which are intended to be used once fortnightly.

They are largely oral, and based on reading authentic, unseen texts. Structured group discussion and open ended questioning enable the teacher to provide expert guidance, which improves pupils' reasoning skills. A particular feature is metacognition (structured reflection) which makes pupils more aware of their thinking processes and how they think most effectively.

This approach aligns with what has been discussed in the reading framework and subject report series in English.

These sessions will run on:

26 Feb 2025 0900-1200

20 May 2025 1315-1530

Venue: Boxgrove Primary School



Sign Up





SUITABLE FOR:

This network is designed for Primary Subject Leaders in reading.

Facilitated by Rachel Hughlock, Primary Practice Development Lead

Primary

Secondary

Reading Network

Session - 20 May 2025

Fluency

Herts for Learning Fluency Project.

- The Reading Fluency Project works to significantly improve outcomes for pupils. It is designed to help equip teachers to improve fluency and comprehension in a short space of time, across primary and secondary phases of education.

The following areas will also be discussed:-

- Fluency misconceptions
- How to address fluency across the curriculum
- A possible approach which focuses on fluency for 1:1 reading, which will support TA's or anyone who hears children read on a 1:1 basis.
- Assessment

These sessions will run on:

26 Feb 2025 0900-1200

20 May 2025 1315-1530

Venue: Boxgrove Primary School



Sign Up





SUITABLE FOR:

This network is designed for Home School Link Workers

Facilitated by the Trust School Inclusion Team

Primary

Secondary

HSLW Network

This session is aimed at Home School Link Workers within our schools, both Primary and Secondary.

In this hugely challenging role, this network provides an opportunity to get together with other Home School Link Workers and share best practice.

External speakers are frequently invited to the network meetings. Much of the agenda comes from the HSLW themselves.

These sessions will run on:

18 Mar 2025 1000-1130

02 Jul 2025 1000-1130

Venue: Pyrford Primary School



Sign Up





SUITABLE FOR:

This network is designed for SENDCOs, Assistant SENDCOS & SEND administration staff

Facilitated by Olivia Wernick, Trust Inclusion Lead

Primary

Secondary

SENDCO Network

The meetings will be a series of opportunities for professionals working in the SEND to get together and share best practice, discuss current issues and keep up to speed with all things SEND happening in Surrey.

Key topics:

Content for these network sessions will be based upon requests from our SENDCOs at each network meeting.

We will cover specialist topics and invites visitors like we did in 2023/2024:

- Regular updates from Senior Managers in the local authority,
- Talks from Alternative Provision providers.
- Tours of our Specialist Schools in the local area
- Hearing from The National Autistic Society and what services they provide.

These sessions will run on:

27 Feb 2025 0930-1130 at George Abbot
22 May 2025 0930-1130 at George Abbot



Sign Up





SUITABLE FOR:

This network is designed for Designated Safeguarding Leads and Deputy Designated Safeguarding Leads.

Facilitated by Holly Wise

Primary

Secondary

DSL Network

This network meeting is for Designated Safeguarding Leads and Deputy Designated Safeguarding Leads.

It is designed to keep DSLs and DDSLs up to date with safeguarding news and events in Surrey and Learning Partners Academy Trust. It may at times include relevant external speakers.

This network meeting will provide an opportunity to:

- Share best practice
- Discuss current issues
- Meet key individuals
- Discuss the latest safeguarding policies and procedures

These sessions will run on:

27 Mar 2025 1000-1130

09 Jul 2025 1000-1130

Venue: Pyrford Primary School



Sign Up





SUITABLE FOR:

This training is designed for for all Year 1-6 teachers within primary schools

Primary

Writing Moderation Years 1-6

These sessions provide a valuable platform for qualifying judgments, discussing uncertainties, and enhancing understanding of students' progress.

Hosted by the Trust's primary schools, the moderation sessions are integral to fostering a collaborative and supportive environment. The termly exemplars for each year group, along with the Trust's Writing Framework, will ensure that judgments are consistent and derived from an agreed-upon approach.

This structured process aims to improve the accuracy and reliability of writing assessments, ultimately benefitting both educators and students.

Please note each session will start promptly at 1600

PTO for EYFS Moderation Information

These sessions will run on:

12 Mar 2025 1600-1700

04 Jun 2025 1600-1700

Venues:

Tillingbourne will host:-

Tillingbourne, Loseley Fields, Shalford Infants, Farncombe & Sandfield

Boxgrove Primary will host:-

Boxgrove, Burpham, Pyrford

Guildford Grove will host:-

Guildford Grove, Northmead, Stoughton & Pirbright



Sign Up



Writing Moderation - Early Years

Session - 12 Mar 2025

Discussion of 'Strong Foundations in the First Years of School' and the impact on the writing curriculum within the EYFS. (In response to previous online task)

Session - 04 Jun 2025

Analysis of children's writing samples to assess if they meet the writing ELG.

SUITABLE FOR:

This training is designed for for all EYFS teachers within primary schools

Facilitated by Sophie Murray

Primary



Sign Up

These sessions are **mandatory** & will run on:

12 Mar 2025 1600-1700

04 Jun 2025 1600-1700

Venue:

Pyrford CofE Primary School





SUITABLE FOR:

This network is designed for teachers, SENDCOS, TAs & LSAs.

Facilitated by Claire Pascolutti, Loseley Fields Primary School

Primary

Secondary

Colourful Semantics

This session is an introduction to colourful semantics and how it can support sentence structure for writing.

With a focus on how to support the individual SEND child within a mainstream classroom. Sharing examples and best practice from a specialist LAN centre.

This session will run on:

15 Jan 2025 1315-1515

Venue: Pyrford Primary School



Sign Up



DT – CAD & Microbits

Morning session : 0900–1215

We will have online training for Tinkercad from Create Education. It's a free web app that's great for 3D design, electronics, and coding. Tinkercad is super easy to use, making it perfect for beginners and especially good for primary school kids. This session will help you get the hang of creating and working with 3D models, sparking creativity and a love for STEM from an early age.

Afternoon session : 1300–1500

Susie McAuley from Inventors and Makers will be delivering our session on micro:bits

1. What is a micro:bit and how does using it fit into the DT and Computing curriculums.
2. Inputs, outputs and programming a micro:bit.
3. Using a micro:bit to monitor temperature, including how you can use it to obtain data the children can read and interpret.
4. Creating a control program for a topic-based challenge.

This session will run on:

13 Feb 2025 0900–1500

AM Session – Tinkercad

PM Session – Microbits

Venue: Kings College , Central Team Meeting Room

UPDATED



Sign Up

SUITABLE FOR:

This training is designed for DT leads, Computing leads and teachers teaching Tinkercad and Microbits

Facilitated by Rachel Hughlock, Primary Practice Development Lead, Create Education & Inventors & Makers

Primary





HISTORY

SUITABLE FOR:

This network is designed for History Leads

Facilitated by Tom Hunt & Natalie Hind, Boxgrove Primary School. Together with Haidee Thomas - Museum Engagement Office, Surrey Museums Partnership & Ismail Dale from Historic England

Primary

History Network

This history network focuses on the role of sources in the teaching of history, and how to use historical sources in ways that are engaging and accessible for all students.

Through practical examples and interactive activities, educators will learn techniques to integrate primary and secondary sources into their lessons effectively, making history more relatable and compelling for learners of all backgrounds.

This approach not only enriches students' understanding of historical events but also enhances their critical thinking and analytical skills.

We are delighted to welcome Ismail Dale from Historic England who will provide attendees with a half hour of practical training on how to use your local free map packs (worth £70) for local history in the classroom.

This session will run on:

06 Mar 2025 1315 -1530

Venue : Boxgrove Primary School



Sign Up



NEW

Year 1 Network

Join us for an engaging and collaborative session designed for Year 1 practitioners to share challenges, exchange ideas, and work together to identify solutions.

01 Apr 2025 : Stronger in the Foundation Years (discussion on key themes from the document)

13 May 2025 : Sharing Our Practice (an opportunity for everyone to discuss their provision, timetabling, etc.)

17 Jun 2025 : Research from Lead Practitioners (sharing findings and insights)

The sessions will be facilitated by Olivia Wernick, Trust Inclusion Lead, and Rachel Hughlock, Primary Lead. Don't miss this opportunity to connect and grow as a community!

These sessions will run on:

01 Apr 2025 1300-1530

13 May 2025 1300-1530

17 Jun 2025 1300-1530

Venue : Kings College



Sign Up



SUITABLE FOR:

This network is designed for Year 1 teaching staff.

Facilitated by Rachel Hughlock Primary Development Lead & Olivia Wernick, Trust Inclusion Lead

Primary



SUITABLE FOR:

This network is designed for Art Leads

Facilitated by
Alix Blakeway, Art Lead at
Boxgrove Primary School

Primary

Art Network

Exploring Painting in the Primary Phase EYFS–Yr6

This course explores painting from the Early Years Foundation Stage (EYFS) to Year 6, combining practical elements with theory. Participants will delve into various painting techniques, from technical precision to expressive forms, using watercolors and acrylics. Practical activities include color mixing, layering paints, and experimenting with different surfaces.

Pedagogy emphasises exploratory painting and discovery, encouraging creative and emotional expression. You will learn how to apply these methods within your school, ensuring all children benefit from painting. You'll also try painting exercises yourself, gaining starting points to use with your class or colleagues. By the end, you'll feel informed about different types of paint and how they can be combined and layered, appreciating the value of exploratory painting.

This session will run on:

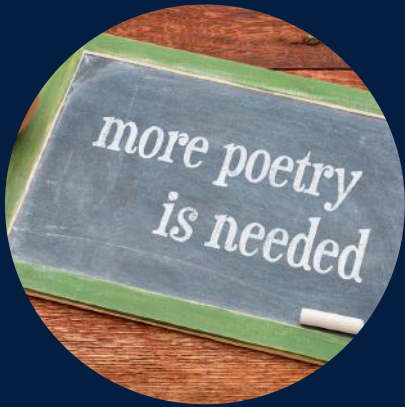
17 Mar 2025 1315 – 1600

Venue : Boxgrove Primary
School



Sign Up





SUITABLE FOR:

This network is designed for all teaching staff

Facilitated by Rachel Hughlock, Primary Practice Development Lead

Primary

Inspiring Young Poets – the Teaching of Poetry

Teaching poetry in KS2 is essential for enhancing students' writing abilities across all genres by incorporating rich, figurative language and vivid imagery.

For developing greater depth writers, poetry is an essential skill as they can use poetic forms as a tool when writing fiction and non-fiction to enhance their composition and effect.

By engaging in activities that stimulate the imagination, students can strengthen their ability to write evocatively and effectively. Immersive experiences further deepen students' understanding and appreciation of poetry, making the learning process both enjoyable and impactful.

Scaffolding this learning involves modelling poetic techniques, guided practice, and we will look at strategies to support all learners develop confidence and competence in figurative writing.

This session will run on:

25 Mar 2024 1315-1600

Venue: Boxgrove Primary School



Sign Up





SUITABLE FOR:

This training is designed for all teachers within primary schools

Facilitated by Rachel Hughlock, Primary Practice Development Lead

Primary

Mastering Non-Fictional Writing

Writing in non-fiction is a distinct skill set compared to fiction, characterized by unique language patterns that differ significantly from everyday speech. This session will delve into various strategies designed to scaffold learning and help develop the necessary language patterns for crafting non-fiction genres. Participants will explore techniques to structure their writing effectively, ensuring clarity and coherence in conveying factual information.

Additionally, we will introduce a novel approach to reduce cognitive overload when writing non-fiction: fictitious non-fiction. This strategy blends elements of fiction with non-fiction, providing a creative yet structured way to ease the complexities of non-fiction writing. Through these methods, attendees will gain practical tools to enhance their non-fiction writing skills, making their work both engaging and informative.

This session will run on:

03 Apr 2025 1315-1600

****CANCELLED****

Venue: Boxgrove Primary School



Sign Up





SUITABLE FOR:

This training is designed for all teaching staff

Facilitated by
Kate Charles, Area Schools
Officer for North West &
South West

Primary

Secondary

Challenging Conversations

Building positive relationships between parents/carers and schools contributes to positive outcomes for children and young people. This includes improved attainment and achievement, improved attendance, reduced exclusion, improved child-teacher relationships and an improved school community environment/culture

Conflict, if not properly managed, can undermine relationships quickly and sometimes permanently, it can also take an emotional and physical toll.

Our training offers a framework to understand and manage conflict in a constructive, safe and confident manner.

We hope you will have some fun whilst gaining a better understanding of behaviour, our reaction to conflict and leave with a strategy to managing distressing situations in the future.

This session will run on:

28 Apr 2025 1315-1530

Venue: Pyrford Primary School



Sign Up



Supporting Students with Self Harm

The session will be delivered by Liz Langley, highly experienced in working with young people who are experiencing difficulties with their wellbeing.

Liz will facilitate a discussion based session, in which we will consider the reasons why children may harm themselves.

We will explore:-

- self harm and neurodiversity
- build confidence in having difficult conversations with students
- identify positive responses to incidents of self harm,
- have a practical experience of using safety plans
- consider the emotional impact of self harm on staff.

Prior to the session you will be asked for questions you would like incorporated.

43

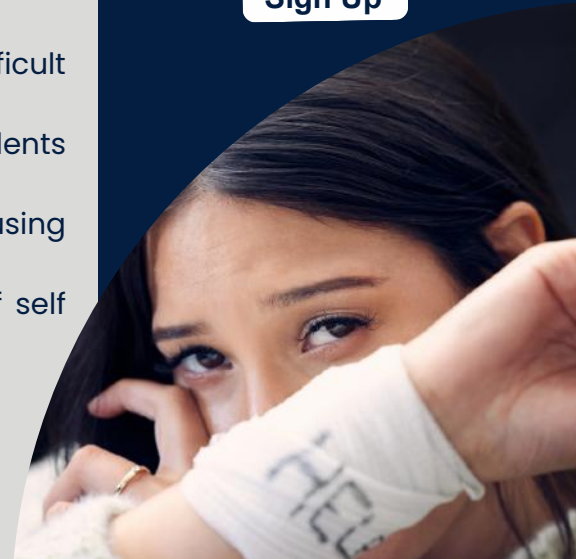
This session will run on:

07 May 2025 0900-1200

Venue: Tillingbourne Junior School



Sign Up



SUITABLE FOR:

This network is designed for teachers, TAs, LSAs, DSLs, DDSLs & HSLWs

Facilitated by
Liz Langley, Primary Mental Health Worker

Primary

Secondary



NEW

Secondary English Network



SUITABLE FOR:

Secondary subject specialist teachers & leaders

Secondary

The Secondary English Network is designed to facilitate formal & informal collaboration across Trust schools.

Teachers and leaders have the opportunity to benefit from partnership with peer experts as they engage in continuing professional learning.

Please book the Secondary English Network via the QR code. Future sessions & focus will be finalised during this session.

The next session will run on:

20 Jan 2025 1545-1645

Venue: Virtual meeting



Sign Up





SCHOOLS TOGETHER
SUCCESS NOW

NPQs are the most widely recognised qualifications in the education sector for current and aspiring leaders.

STSN has successfully delivered NPQs to over 3500 leaders since 2013. It has worked with school leaders from 35 Local Authorities in the South East and East of England and London. The quality of its courses and delivery has been rated exceptional for the DfE's Quality Assurance Agent.

National Professional Qualifications

There are ten NPQ programmes to support aspiring and established leaders at every level. These NPQs either support the development of specialist knowledge and skill or focus on leadership development at a range of levels.

Specialist NPQs:

- NPQ in Leading Teaching (NPQLT)
- NPQ in Leading Behaviour and Culture (NPQLBC)
- NPQ in Leading Teacher Development (NPQLTD)
- NPQ in Leading Literacy (NPQLL)
- NPQ in Leading Primary Maths (NPQLPM)

Leadership NPQs:

- NPQ in Senior Leadership (NPQSL)
- NPQ in Headship (NPQH)
- NPQ in Executive Leadership (NPQEL)
- NPQ in Early Years Leadership (NPQEYL)
- NPQ for SENDCoS (NPQSENDCO)

Limited scholarship funding is available for the following three NPQs:

- NPQLPM
- NPQH
- NPQSENDCo

In addition, scholarship funding is available for any NPQ for schools with a specific cohort.

For LPAT schools this is for teachers at Guildford Grove, Kings College and Loseley Fields schools only

Further details on available funding can be found in the 'Funding' tab of each individual programme page on the website www.stsn.co.uk

For further information please contact Andrew Roach on CPLD@learningpartners.org

Primary

Secondary



SUITABLE FOR:

The Schools Alliance for Excellence has a range of training & networking opportunities for all.

Secondary

SAFE

Secondary Schools have a subscription to SAFE - the Schools Alliance for Excellence, for the this academic year.

This enables access to a range of training courses & networking opportunities free of charge.

Please liaise with your Teaching & Learning Lead for further information.

To browse all that SAFE has to offer please click below:-

CLICK HERE



Training courses & networking opportunities run throughout the academic year both virtually and at various venues.





Learning Partners

church academy trust

SUITABLE FOR:

This training is designed for LPCAT Schools – Learning Partners Church Academy Trust

Primary

SIAMS Training & Support

The Diocese of Guildford offers SIAMS Training and Support for all LPCAT Learning Partners Church Academy Trust Schools.

Training on all aspects of the SIAMS Framework & how to prepare for inspection is available for Senior Leaders, RE Subject Leaders & Governors.

Further information can be found here:-

[CLICK HERE](#)

The Elevate Partnership package is also available providing access to system leaders & practitioner consultants equipped to provide consultancy in

- SIAMS
- Christian Distinctiveness
- RE for Church Academies
- RE 2023–2028 Surrey Agreed Syllabus

To explore this opportunity further

[CLICK HERE](#)





NOTES

Contact us - CPLD@learningpartners.org



NOTES

Contact us - CPLD@learningpartners.org

Leading schools where children thrive

Subscribe to
the calendar



www.learningpartners.org