



FOR the FEN!

The campaign to protect
Bonaparte Meadows

WORLDWIDE

A CRITICAL MOMENT

A peat fen may not be the eighth wonder of the world, but it comes pretty darn close.

From helping mitigate climate change to supporting unique plant and wildlife habitat, a healthy thriving peatland is about the most ecologically important patch of land on planet earth.

Once gone, impossible to recreate.



Water Security

- Peatlands function like a reservoir, storing water and releasing it slowly across seasons to prevent drought and flooding.



Climate Value

- Carbon stored below ground is durable and hard to rebuild.
- Peatlands store twice as much carbon as all the world's forests combined.

A RARE OPPORTUNITY

Campaign Purpose

Thankfully, we have a chance to come together to purchase and preserve one of the most important peat fens in the state of Washington, part of a 745-acre parcel at Bonaparte Meadows, located in the Okanogan Highlands east of Tonasket.

Bonaparte Meadows



Okanogan County,
Washington.

Campaign Goal

\$3 MILLION

\$1.5M Private Donations/ \$1.5M Grants

For the Fen! is the Okanogan Land Trust's \$3 million campaign to preserve 260 acres of critical fen habitat and restore sections that have been degraded by peat harvest and other uses.

With your help, we can:

- Purchase the 745-acre parcel that sustains the fen.
- Conserve 260 acres of critical peat fen habitat.
- Restore degraded fen areas.

”

This is a rare opportunity that we simply couldn't pass up... A peat fen is a unique habitat that rarely comes on the market, and this is our chance to preserve one of the largest and most ecologically significant wetlands in this part of the state.

— Kate Miller, Executive Director
Okanogan Land Trust

COMMITMENT DEADLINE: JULY 31, 2026



WHAT IS PEAT?

Peat is nature's filter and storage system, holding water when it is plentiful, and releasing water when it is scarce.

When plants die in wet environments where there's little oxygen, they don't fully decompose. Instead, they build up in layers over thousands of years, creating thick deposits of organic material- called peat.

THE CRITICAL DISTINCTION

While bogs rely on rainfall, fens are unique peatlands sustained by the steady flow of groundwater.



Fen

Peatland fed by Groundwater



Bog

Peatland fed by Rainwater

Preserving the fen allows critical groundwater recharge, even through dry seasons.



SPOTLIGHT: CALCAREOUS FEN

Bonaparte Meadows is not just any fen. One of the rarest wetland types in the United States, calcareous fens form where bedrock is rich in calcium and other minerals that make the soil and water neutral or alkaline.



FEN FACTS

- Calcareous fen: Bonaparte Meadows is a rare calcareous fen (mineral-rich wetland).
- Unique conditions: It's one of the only places in Eastern Washington with these unusual conditions.
- Critically Imperiled : Bonaparte supports rare, sensitive—and sometimes critically imperiled—plants that can't thrive elsewhere.



IRREPLACEMENTABLE

WHY SAVE A FEN?

Because they are both rare and located in areas unlikely to be seen by the public, peat fens carry out their important work in relative obscurity.

Once destroyed, a peat fen is essentially impossible to recreate because it takes thousands of years to form.

Peat does its work quietly, but the benefits are loud.

CARBON STORAGE

Peat fens are massive carbon sinks. Despite covering only about 3% of Earth's land surface, peatlands store roughly twice as much carbon as all the world's forests combined. Climate research agencies are urging nations to move peatland protection and restoration to the center of their climate mitigation strategies.

CLIMATE CHANGE MITIGATION

The carbon stored in the fen means less in the atmosphere, which serves to slow climate change. Conversely, when destroyed or dried out, peatlands release this stored carbon as CO₂, contributing to climate change.

WATER FILTRATION & FLOOD CONTROL

Peat acts like a giant natural filter and reservoir, cleaning water as it moves through and storing excess water during wet periods, then slowly releasing it into streams and rivers during dry times. This helps prevent both flooding and drought.

BIODIVERSITY HOTSPOT

Bonaparte Meadows is a rare oasis in arid Eastern Washington, supporting uniquely adapted plants and wildlife that can't thrive elsewhere—including mule deer, moose, elk, Canada lynx, flying squirrels, and Columbia spotted frogs, plus countless insects, fish, and birds.



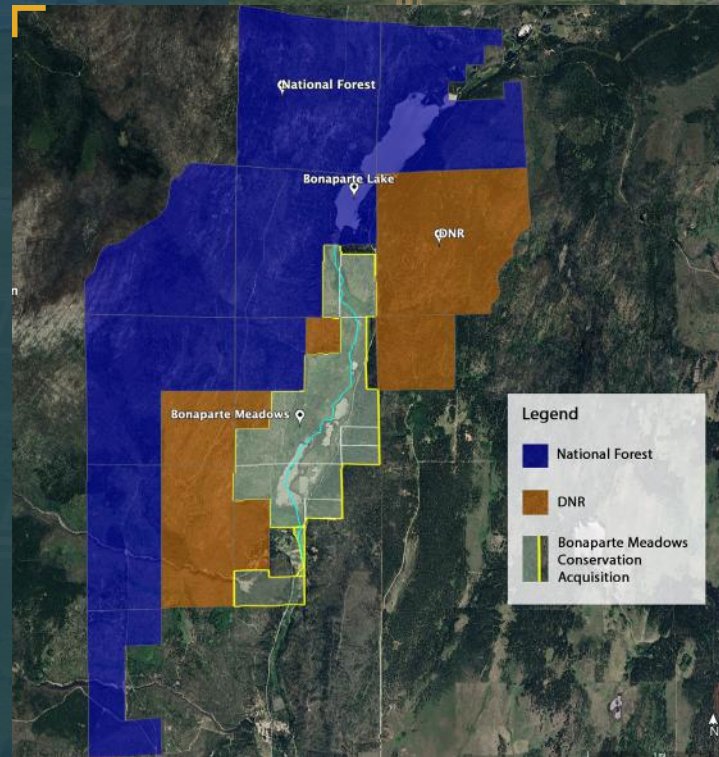
DEATH BY DEVELOPMENT

Threat

Bonaparte Meadows borders popular Bonaparte Lake, and nearby cabins, a Forest Service campground, and the Bonaparte Lake Resort are increasing development pressure. A pattern of 20-acre parcels south of the fen, extending to Highway 20, signals potential encroachment.

Opportunity

The landowners want to sell to OLT to honor their late father's wish to keep the property intact—but they can't wait indefinitely. OLT has until July 31, 2026 to commit to the purchase.



If split and developed, this chance will never come again.

PRESERVATION PLAN

When alerted by community naturalists that this parcel was up for sale, a coalition of local organizations and entities designed a plan to acquire, preserve and restore the property.

Three Goals

1. Raise funds to purchase the 745-acre Bonaparte Meadows parcel and protect it forever.
2. Restore degraded areas of the 260 acre fen.
3. Build a strong coalition.

Okanogan Land Trust Trout Unlimited Okanogan Conservation District Confederated Tribes of the Colville Reservation Upper Columbia Salmon Recovery Board

OUR PARTNERS

- Due Diligence Completed**
- Appraisal
- Boundary Survey
- Phase 1 Environmental Review
- Botany Assessments

Restoration

THE WORK AHEAD

Once the Bonaparte peatlands are under the stewardship of OLT, the work to preserve its functionality and restore damaged areas will begin.

RESTORATION PATHWAY

Protect + Stabilize

Raise Water Table

Slow Flow + Store Water

Recovery

IMMEDIATE



Protect the peat to stop further degradation

YEARS



Nurture stronger wetland function

LIFETIMES



Peat rebuild + recovery

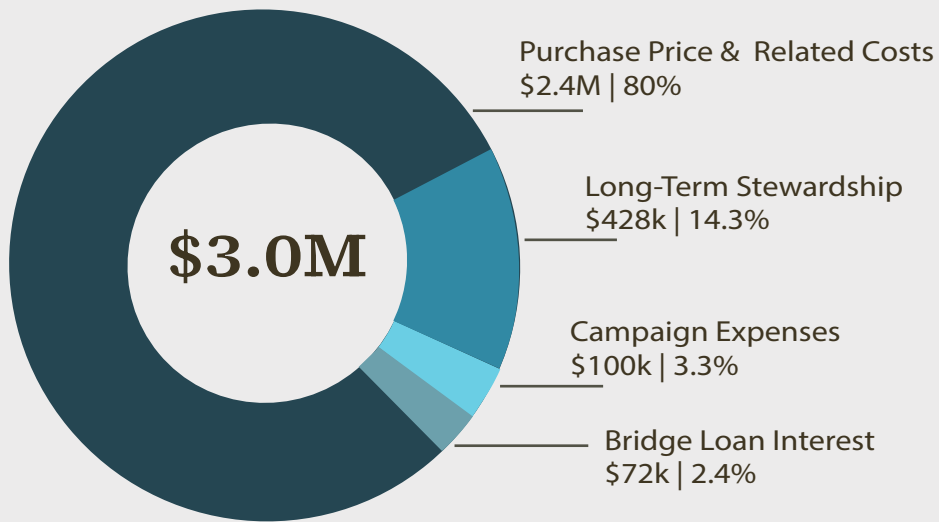
Peat builds over thousands of years, so full restoration will take lifetimes—but once protected, degradation stops immediately, habitat improves within a few years, and new peat can begin to form.

Peat Recovery Time Horizon

FUNDING THE FUTURE

Okanogan Land Trust has committed \$400,000 of its own reserves to protect Bonaparte Meadows, and asks interested donors to help make up the \$1,500,000 needed to match state grants and secure the purchase.

Campaign Expenses



Campaign Revenue

Loan
Forgiveness:
\$300k

Grants: \$1.2M

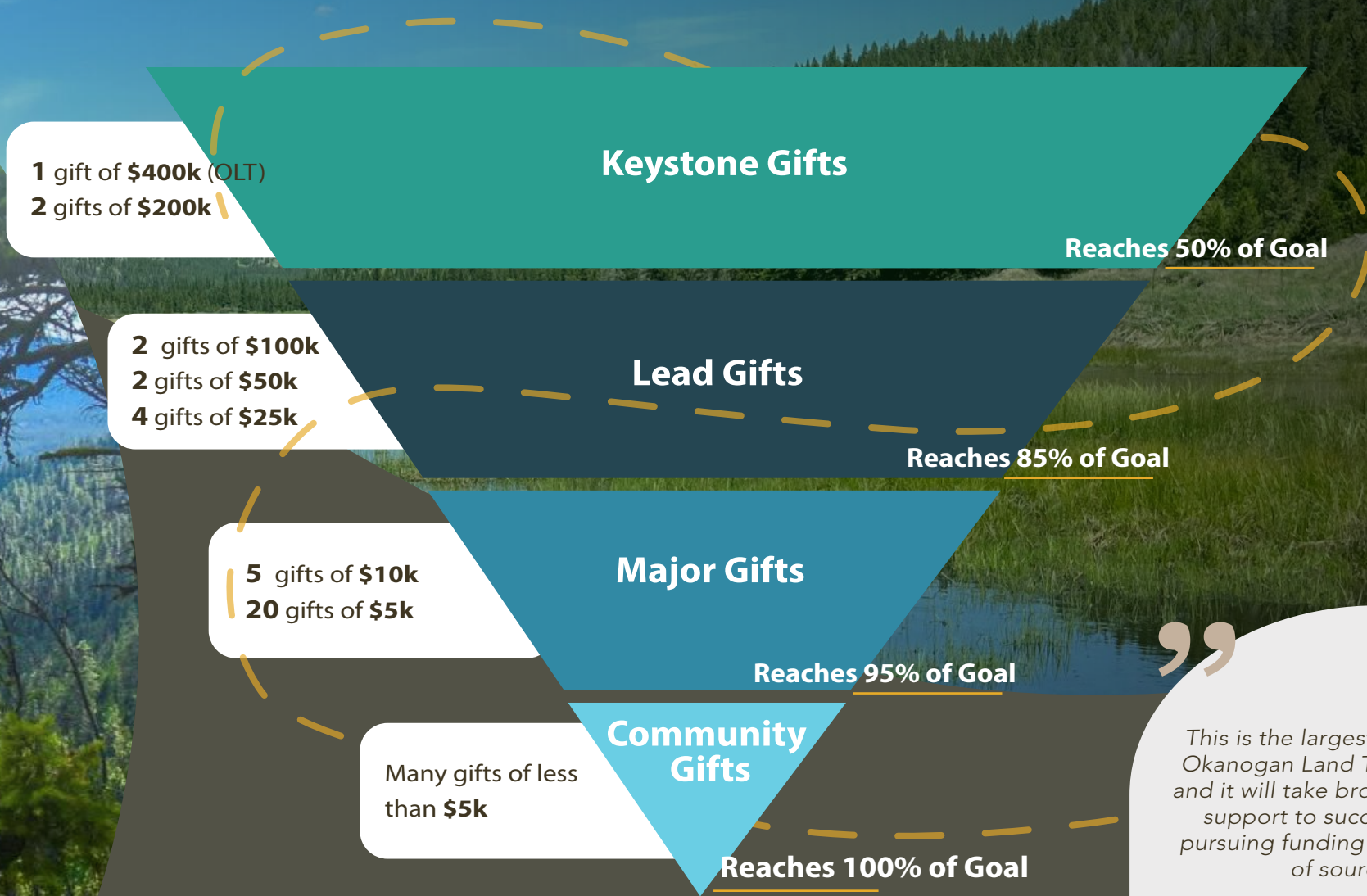
\$1.5M

For the Fen! Campaign: \$1.5M

Private Donations Needed

\$3.0M Goal

THE FUNDING PATHWAY



300+ Total Gifts Required to cross the finish line.

”

This is the largest campaign in Okanogan Land Trust's history, and it will take broad community support to succeed. OLT is pursuing funding from a variety of sources.

— Kate Miller, Executive Director Okanogan Land Trust

Let's keep a living fen — and the water it holds — intact for generations.

Explore giving
options...

● **Make a Foundational Cash Gift**

A gift of cash outright or over a three-year pledge period

● **Give Appreciated Securities**

A gift of appreciated securities, such as stock

● **Plan a Distribution**

A distribution from your Donor Advised Fund
OLT's EIN: 94-3112454

● **Host a Gathering**

At home or place of business

● **Help Make Connections**

Connect OLT with like-minded
donors, businesses, or
foundations

COMMITMENT DEADLINE: JULY 31, 2026



Contact

For more information about campaign giving, please contact:

Kate Miller
Executive Director
Okanogan Land Trust

Email:
kate@okanoganlandtrust.org
Phone: (971) 271-3540

About Okanogan Land Trust

Begun as a grassroots movement in the 1970s, Okanogan Land Trust is a 501 (c)(3) nonprofit organization that currently protects over 18,450 acres via conservation easements in Okanogan and Ferry counties. It is governed by a nine-member board.

Its mission statement reads: From the Cascades to the Kettles, Canada to the Columbia, Okanogan Land Trust is a local nonprofit organization connecting people to the land and conserving and sustaining our working farms and ranches, wildlife habitats, and water resources for generations to come.

As an accredited land trust, OLT has the expertise in land transactions and conservation project funding, public

engagement and education, and experience with long-term monitoring and stewardship, to accomplish the acquisition of Bonaparte Meadows. Recognizing that few conservation acquisitions within its service area offer such abundant benefits to habitat, climate, and water quality as Bonaparte Meadows, OLT's board has committed to contributing \$400,000 from its own Opportunity Fund to the project.

OLT is supported in this effort by partners including Trout Unlimited, the Okanogan Conservation District, Sparrowsong Consulting, and fish and wildlife program staff from the Confederated Tribes of the Colville Reservation.



FOR the FEN!

The campaign to protect
Bonaparte Meadows