

AGIBOT G2

Industrial-Grade Interactive Embodied Operation Robot

The industrial-grade interactive embodied robot, with sub-millimeter precision dual arms, revolutionizes precision assembly and complex tasks. AGIBOT G2 brings intelligent, flexible, and reliable future technology, injecting new possibilities for humanoid robot collaboration across industries.

The image shows three AGIBOT G2 humanoid robots in a factory environment. The central robot is the largest and is holding a black tray with both hands. It has a white and black body with orange accents and a glowing blue circular light on its forehead. In the background, two smaller versions of the robot are working at industrial machines labeled '60H' and '6160H'. The floor is light gray with yellow and black safety stripes. The overall scene is brightly lit, highlighting the sleek design of the robots.

 AGIBOT
www.agibot.com

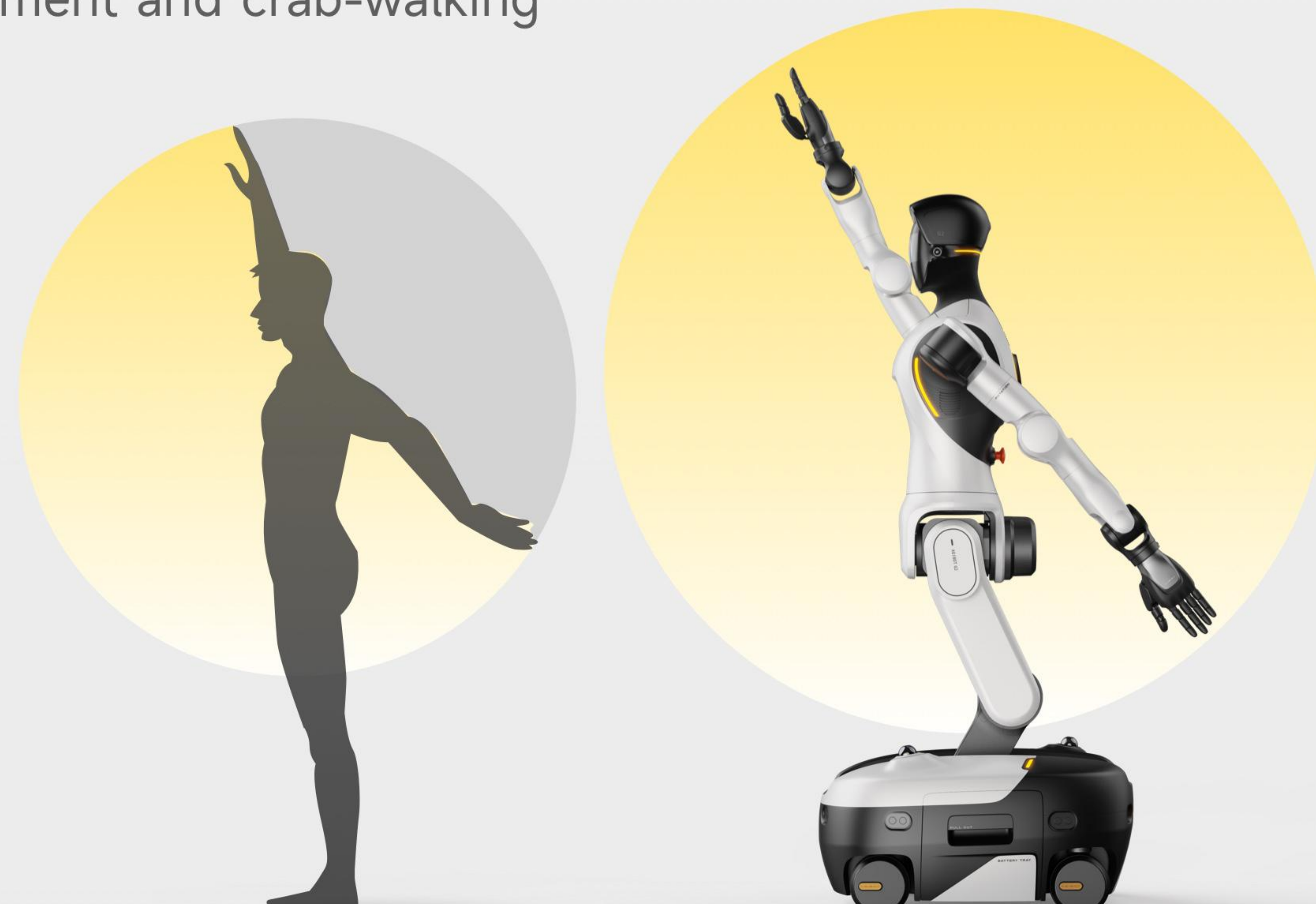
Advanced Precision Performance

- 100% automotive-grade components for unwavering reliability
- Dual-arm force control precision $\leq 0.5\text{N}$, achieving sub-millimeter accuracy
- Powered by NVIDIA Jetson Thor T5000 chip with a computing power of up to 2070 TFLOPS.



Expanded Operational Workspace

- 26-DOF body for human-like motion
- 5-DOF waist-leg system for fluid movement even in tight spaces
- 4-wheel steer enables in-place rotation, omnidirectional movement and crab-walking



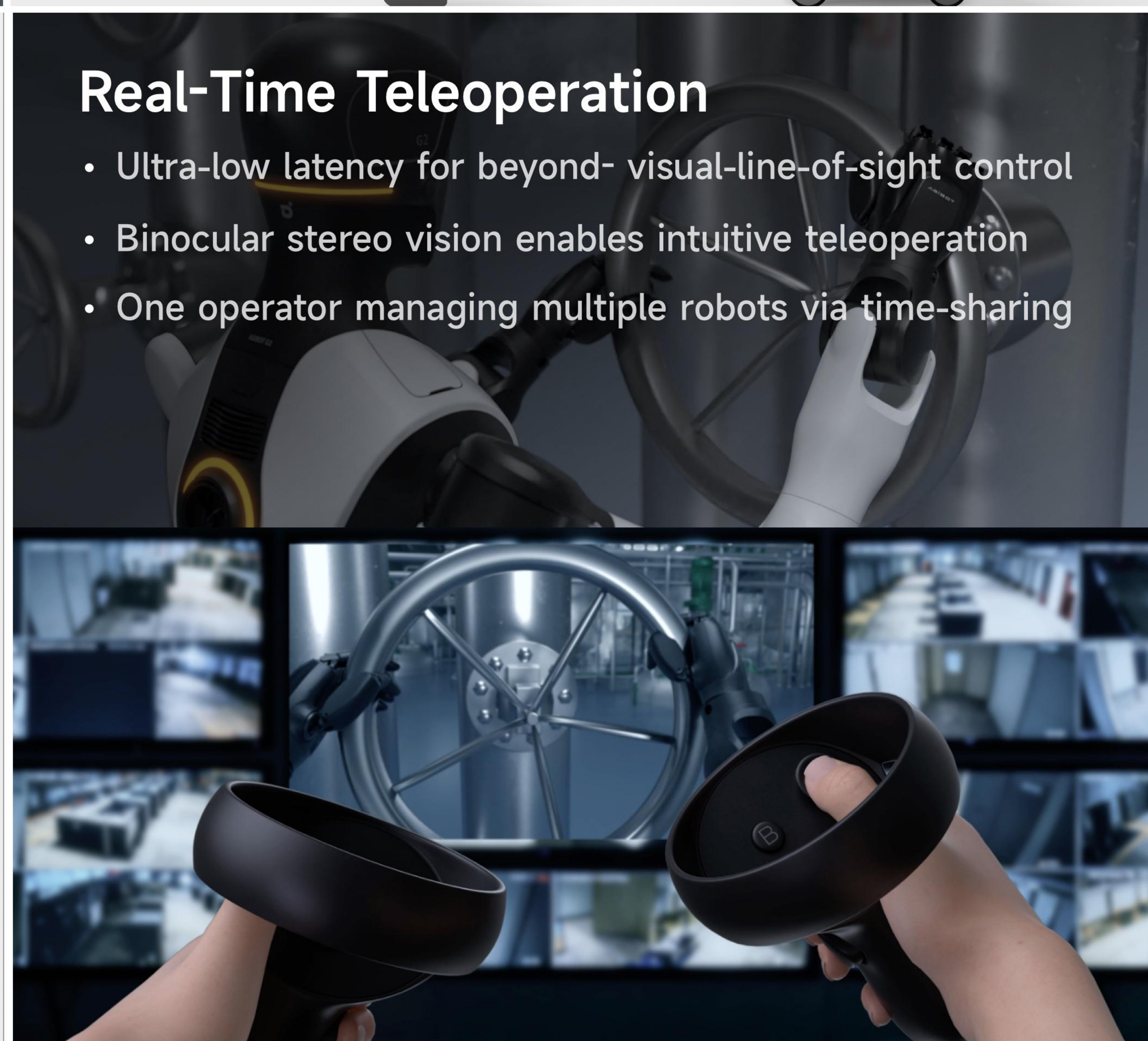
Multi-Modal Smart Interaction

- Continuous multi-speaker dialogue and knowledge base Q&A
- 1:1 human-like motion



Real-Time Teleoperation

- Ultra-low latency for beyond-visual-line-of-sight control
- Binocular stereo vision enables intuitive teleoperation
- One operator managing multiple robots via time-sharing



Safety Assurance

- 360° surround view and high-precision arm collision detection
- Hybrid active-passive system ensures personnel safety



Long-Lasting Power

- Hot-swappable dual batteries for 24/7 continuous operation
- Autonomous return-to-charge, rapid "full-power" recovery



AGIBOT G2 Product Specifications

RGB-D Camera

- Depth Perception

Stereo Camera

- Depth Video Capture

Neck

- Roll, Pitch, Yaw

Computing Platform

- NVIDIA Jetson T5000 2070 TFLOPS (FP4)
- HUIXI R1 500 TOPS (INT8)

Wrist RGB-D

- Depth Perception

Dexterous Hand (Optional)

- Up to 19 Active DOF
- 3D Tactile Sensing
- Supports Quick Replacement

Waist & Legs

- Waist Joint *3
- Leg Joint *2

Chassis

- Speed: 1.5 m/s
- In-place rotation, omnidirectional movement

Microphone Array

- Sound Source Localization
- Noise Reduction & Echo Cancellation

Fisheye Camera Array

- 360° Surround View

Speaker

- 8W

Network Port

- 10G

7-DOF Arm

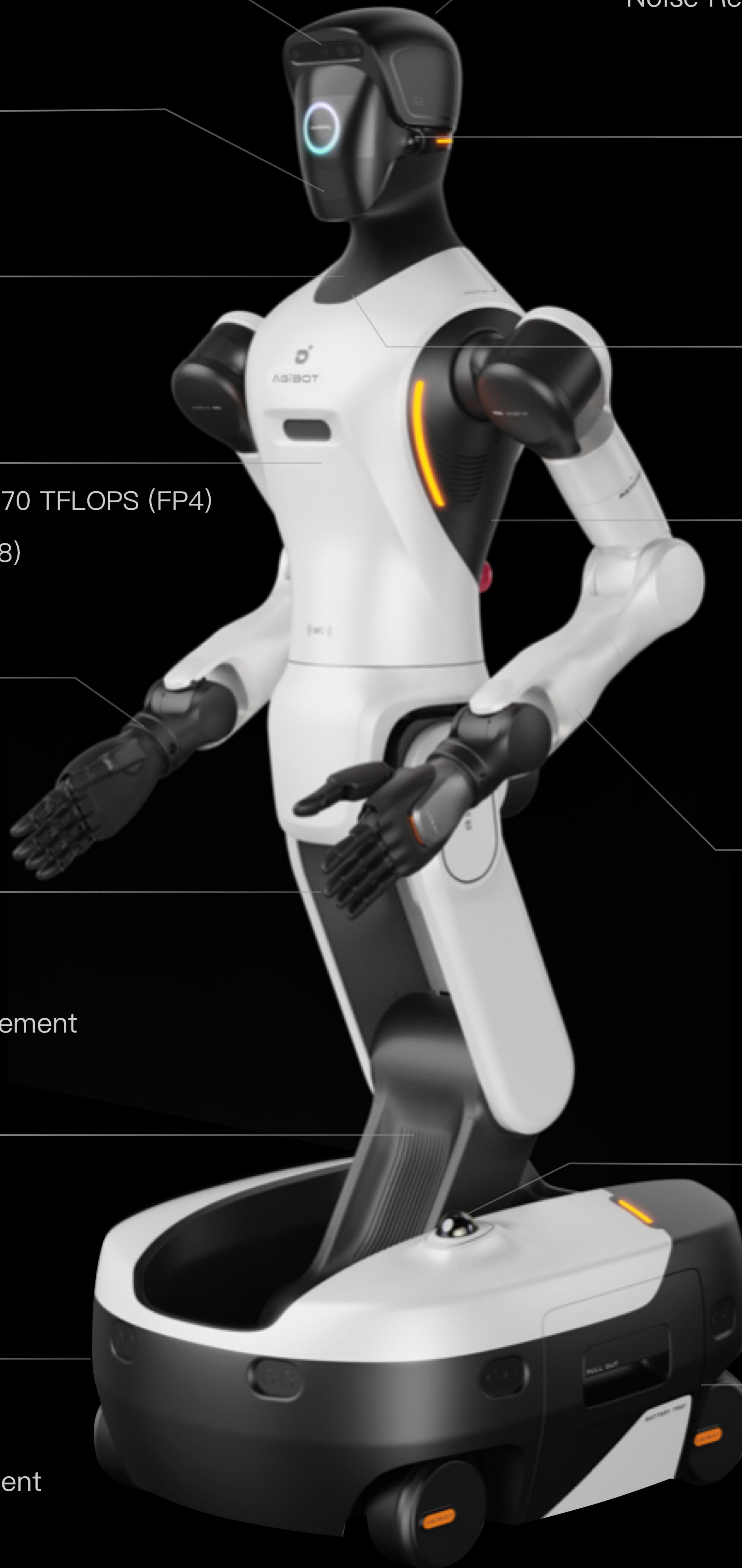
- 5kg Payload
- Full Joint Torque Sensing

Lidar*2

- 360° Coverage

Battery*2

- Hot-Swappable
- Automatic Recharging

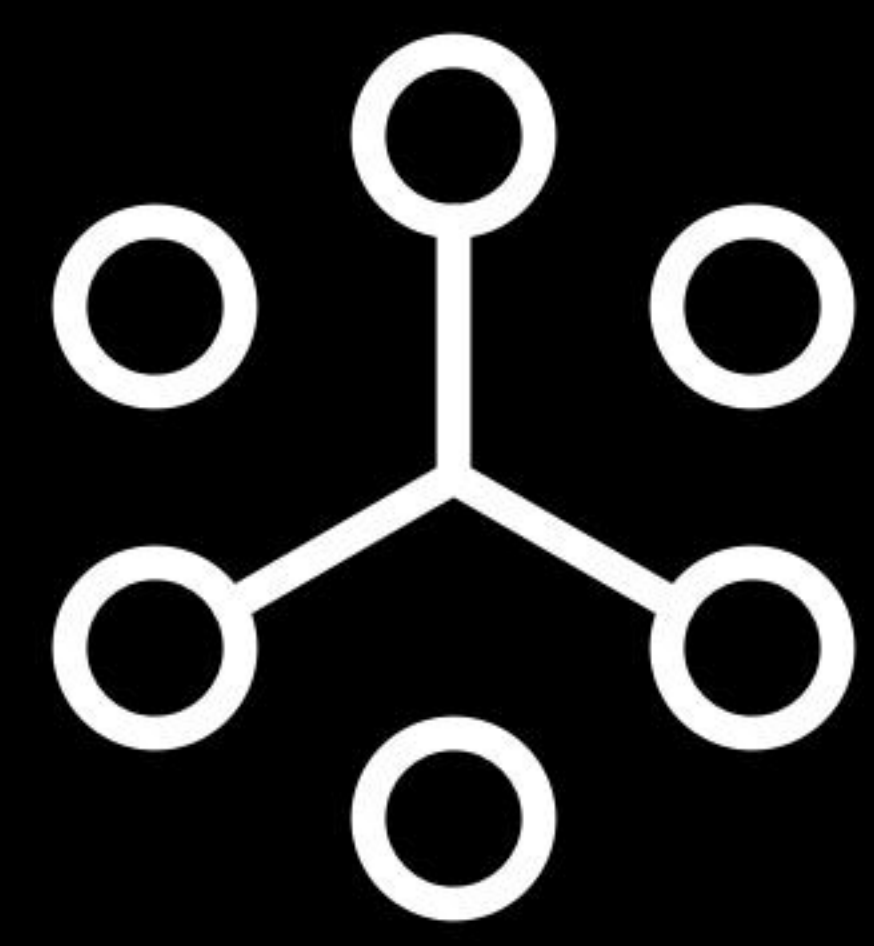


1. Schematic for reference only, actual product may vary.

2. End-effectors (e.g., 012 Dexterous Hand, OmniPicker) are optional extras.

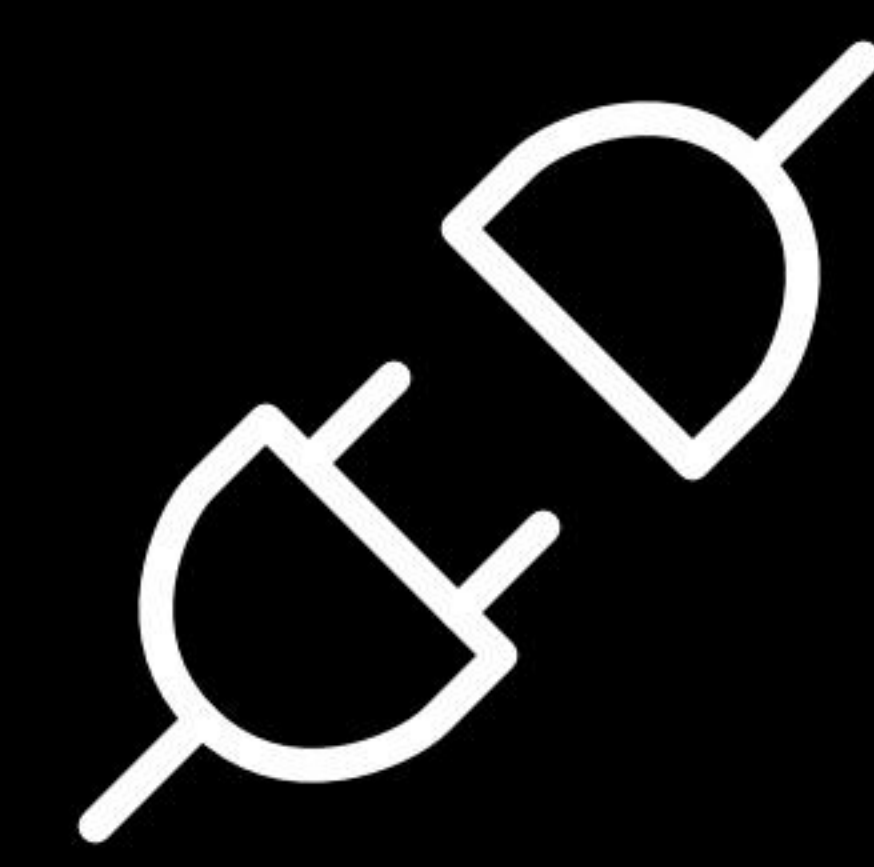


Developer-Friendly Ecosystem



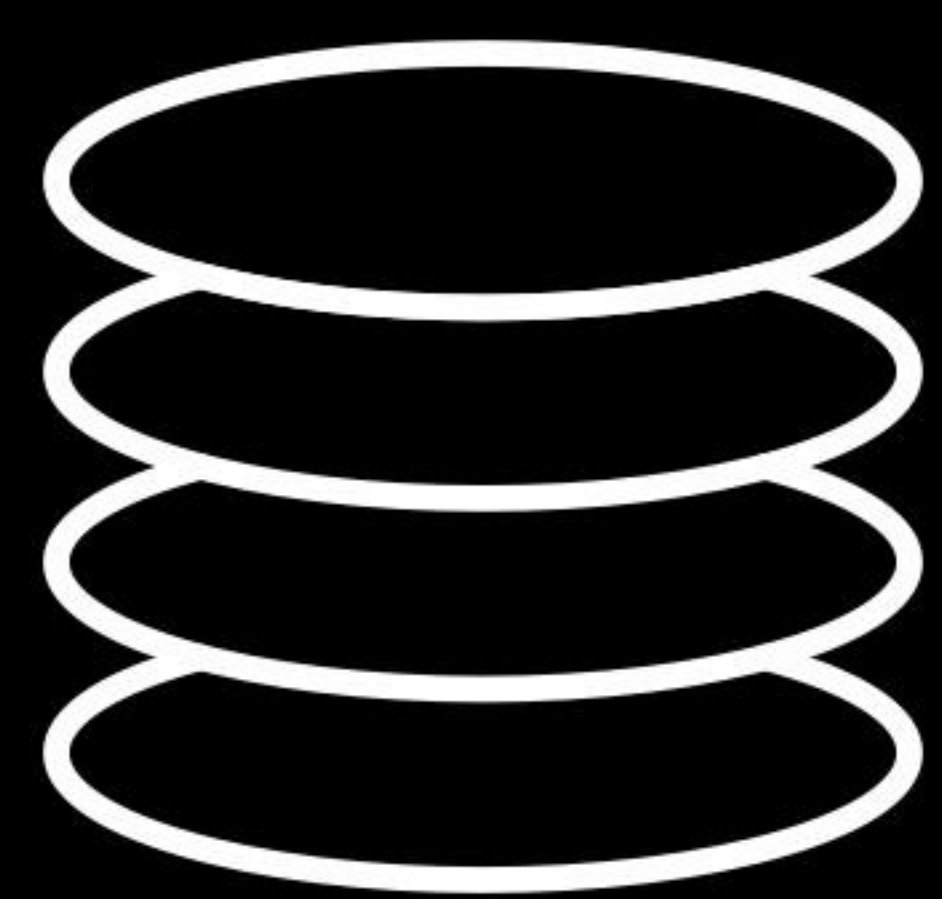
Genie RL Toolkit

Rapid deployment and model switching with minimal demonstration



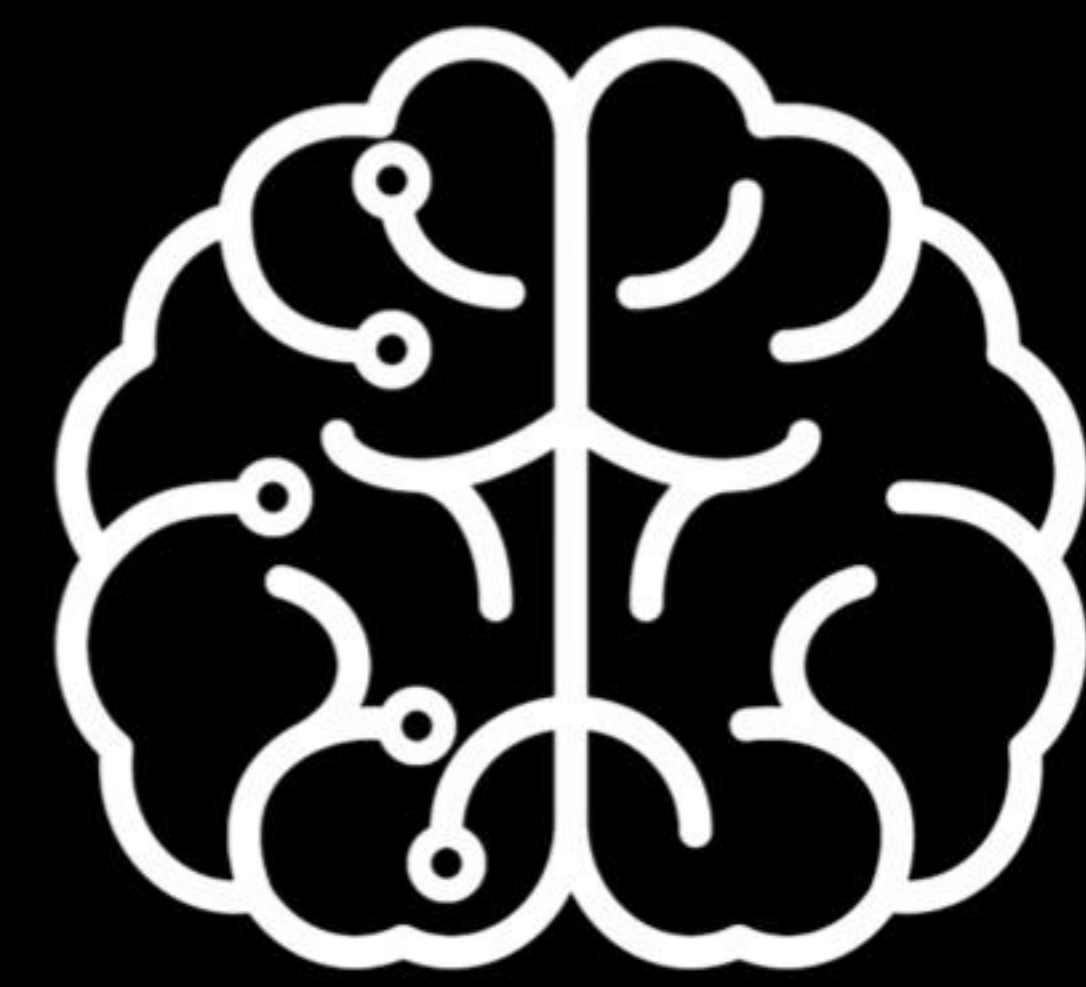
GDK (Genie Development Kit)

A development toolkit enabling rapid development, deployment, and optimization of Agibot robotic applications and functionalities



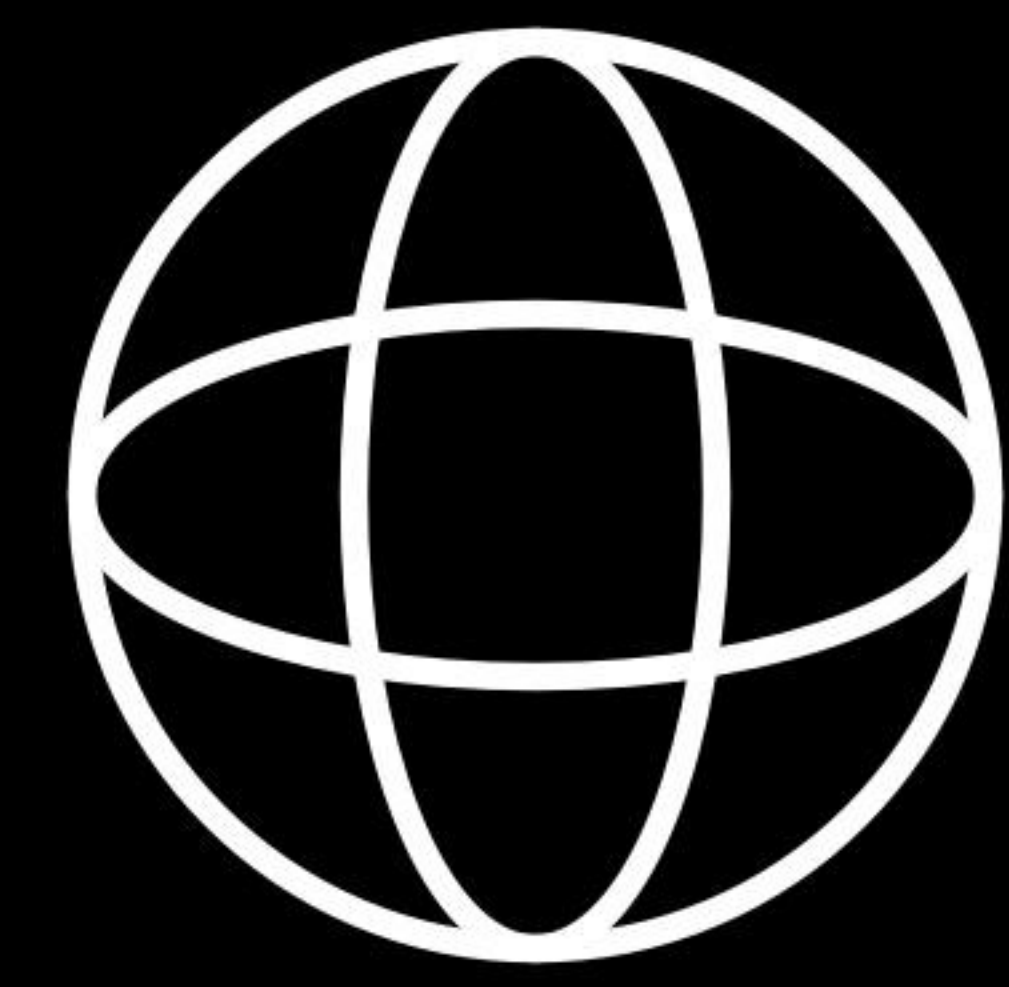
AGIBOT WORLD

Million-scale real-machine open source dataset



GENIE OPERATOR-1

An innovative generalist embodied foundation model



Genie Envisioner

A unified world foundation platform for robotic manipulation

Applications



High Precision Assembly & Operaion



Industrial Inspection



Logistics Sorting



Security Check



Guided Tours



Research & Development

AGIBOT Innovation (Shanghai) Technology Co., Ltd



www.agibot.com



business@zhiyuan-robot.com



Official Website



YouTube