

SUPERLOCK 2.0 CODE DOUBLE-SIDED SURFACE MOUNTED


CODE: C

5-Year Warranty
Reversible Handing



Suitable for wooden gate frames. For metal gates, our bolt-on option is available.

INCLUDED IN THE BOX

- 2.5mm hex key + 3mm hex key
- 2 x M8 fixing bolts
- Face plate
- Latchbolt
- Strike plate (2 x self-drilling fasteners)
- Code changing pack



Enjoy secure, keyless convenience with durability you can count on, even in challenging conditions. Perfect for surface-mounting to wooden gates, this double-sided keypad lock is easy to install and provides reliable long-lasting performance in any environment. The code can be customised to suit your needs.

Product code	Description
BDGW1030	To fit 10-30mm (½" to 1 ¼") gate frames
BDGW4060	To fit 40-60mm (1 ½" to 2 ¼") gate frames
Available in:	 Black RAL9005  Moss Green RAL6005

HELP & SUPPORT

Need further assistance? Our customer support team can help with order queries, product identification, spare parts, warranty information and general after-care.



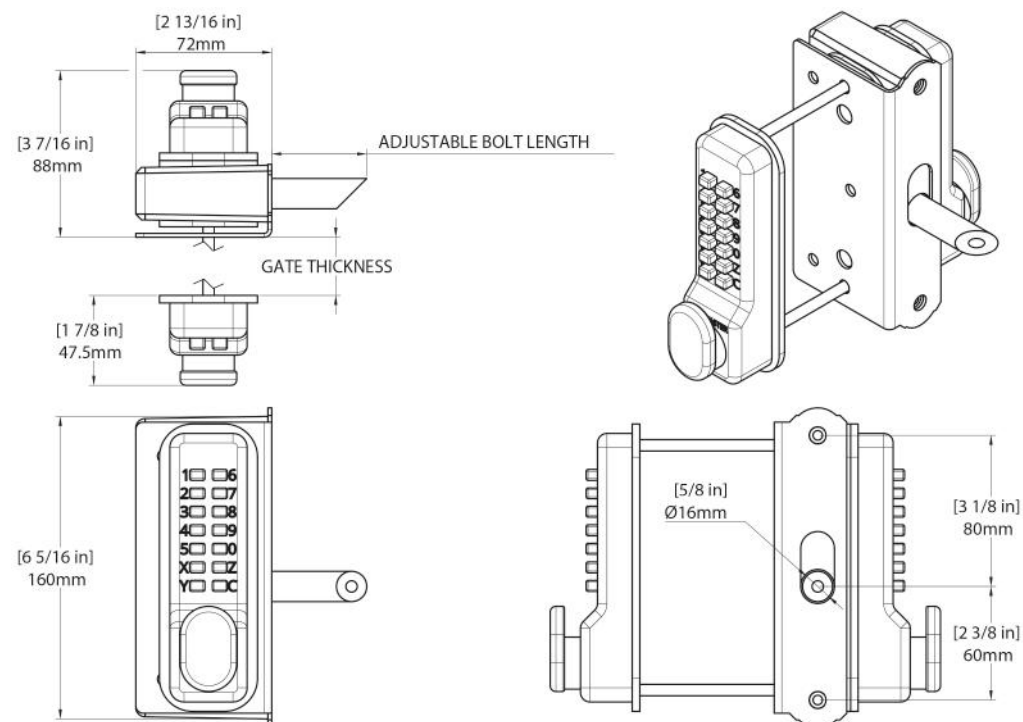
UK: +44 1243 558580 US: +1 214 872 9687


www.gatemasterlocks.com

support@gatemasterlocks.com

TECHNICAL SPECIFICATIONS

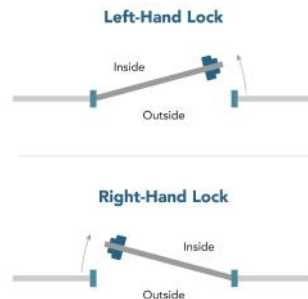
Lock type	Mechanical keypad gate lock
Keypad type	Double-sided
Handing	Reversible, supplied right-handed
Latchbolt throw	20mm (3/4")
Lock case width	70mm (2 3/4")
Fixing method	Surface-mounted
Fixings included	Yes
Warranty	5 years



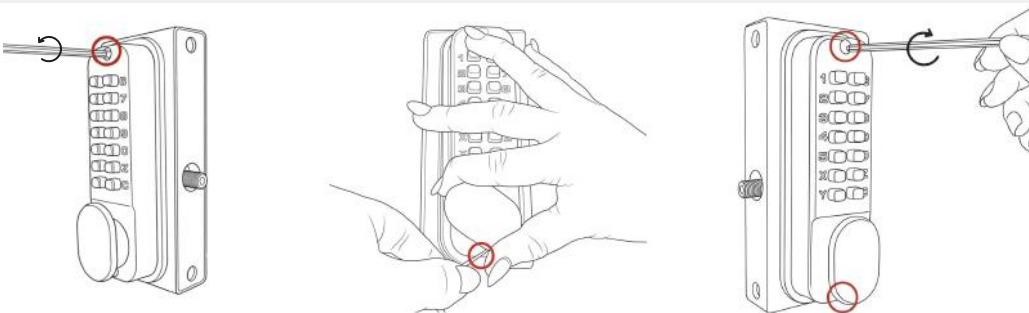
1. Position L bracket at a suitable height on the outside of the gate and mark it for reference. Ensure outward-opening gates have a minimum 18mm (3/4") gap between the L plate end and post so the lock doesn't clash with the keep when opening. Start off the holes with a smaller drill bit, using the plate as a jig.
2. Drill the holes partway through, then mark and drill from the other side to ensure holes are straight.
3. Drill the centre spindle hole with a 12mm drill bit, and open out the top and bottom holes with the 12mm drill bit to allow insertion of the outside keypad. Insert outside keypad and fasten with M5 screws provided. M5 screws may have to be cut to length with a grinder or a hacksaw. Screw L bracket to the gate with screws supplied. Insert spindle (ensuring it is fully seated) and measure a protrusion to the correct length (BDGW - 55mm (2 3/16"), BDGSW - 70mm (2 3/4"), BDGWRR - 45mm (1 3/4") BDGSWRR - 60mm (2 3/8")) then cut to length using a grinder or hacksaw. Use the notches as cutting guides - if your measurement falls between notches, cut at the next longer notch and trim further if needed.
4. Once cut, insert the spindle, then place lock body over spindle and fix using M8 fixing bolts and cover plate supplied. Use 5mm hex key to tighten bolts.
5. To fit the keep, align with the lock and mark the position on the gate post, then fasten with screws supplied

HOW TO CHANGE HANDING FROM RIGHT TO LEFT HANDING

Handing refers to the side on which the gate is hinged. This determines whether the lock should be set for left-hand or right-hand installation. When standing outside the gate, if the hinges are on the left, the lock must be changed to left-hand setting.



OUR LOCKS ARE SUPPLIED RIGHT-HANDED. IF A RIGHT-HANDED LOCK IS REQUIRED, SKIP THE STEPS BELOW AND CONTINUE WITH INSTALLATION.



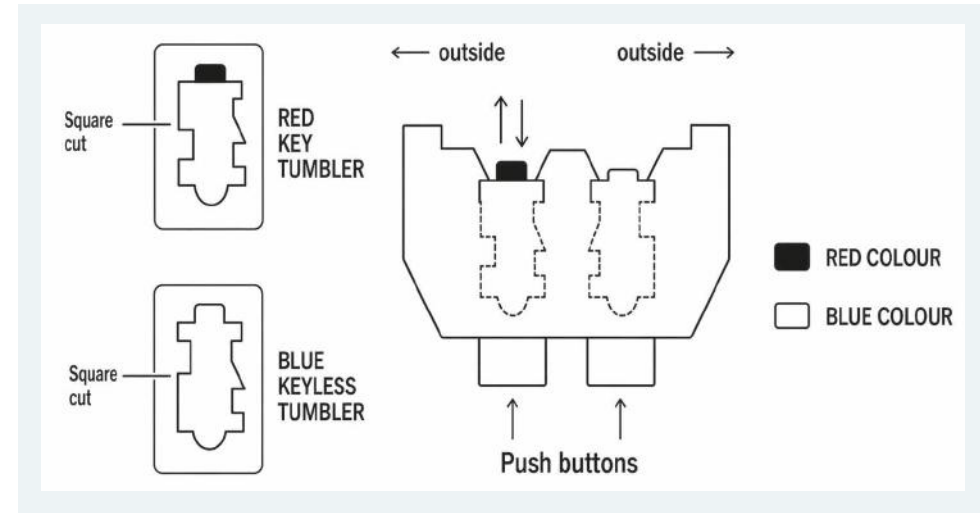
1. Using the 3mm hex key, unscrew the top screw of the inside keypad.

2. Enter the code and turn the handle and then use a 2.5mm hex key to unscrew the bottom screw. Remove the keypad and rear fixing plate.

3. Refit the keypad and fixing plate on the correct sides using the hex keys, ensuring the flat spindle and rubber gaskets are in place. Use the 3mm hex key for the top screw & the 2.5mm for the bottom. Make sure that the keypad with screws is located on the inside of the gate.

Check that the code and handle work correctly and then follow the instructions install the lock onto the gate.

1. Check the original code is working on the keypad.
2. Remove the keypad off the lock. To do this, unscrew the two screws fixing the keypad to the panel.
3. Turn the keypad over and remove the 4 screws.
4. Lift off the covering panel carefully as there are 10 springs attached to this panel. Note that the red tumblers relate to the code shown above. Also note that the C tumbler is uncoloured and should not be removed.
5. To change the code hold the keypad with the code buttons down and depress & hold the C button (if this is not done you may damage some of the internal components). Reposition the tumblers to the new code (red tumblers are coded and blue tumblers are uncoded). Ensure that the square cut-out on each tumbler is facing the outside of the lock body, also ensure that the coloured mark is facing upwards. If any one tumbler is upside down or the wrong way round the lock will not work and if forced will break the internal components. The code must always start with a 'C'



6. Replace the covering panel and tighten the 2 screws

7. The code is now changed, check to see that it is working correctly and make a note of the code for future reference. Once satisfied that the lock is working correctly refit keypads to the panel using the 2 screws and reassemble the lock.

MAINTENANCE

6 Monthly:

1. Remove keypads from the lock.
2. Spray the inside of the lock thoroughly with WD40 or equivalent, through the tumbler holes at the back of the lock.
3. Spray all the fixing accessories and the latch with WD40 or equivalent.
4. Push each of the buttons and rotate the knob several times to make sure the lock is working smoothly.