

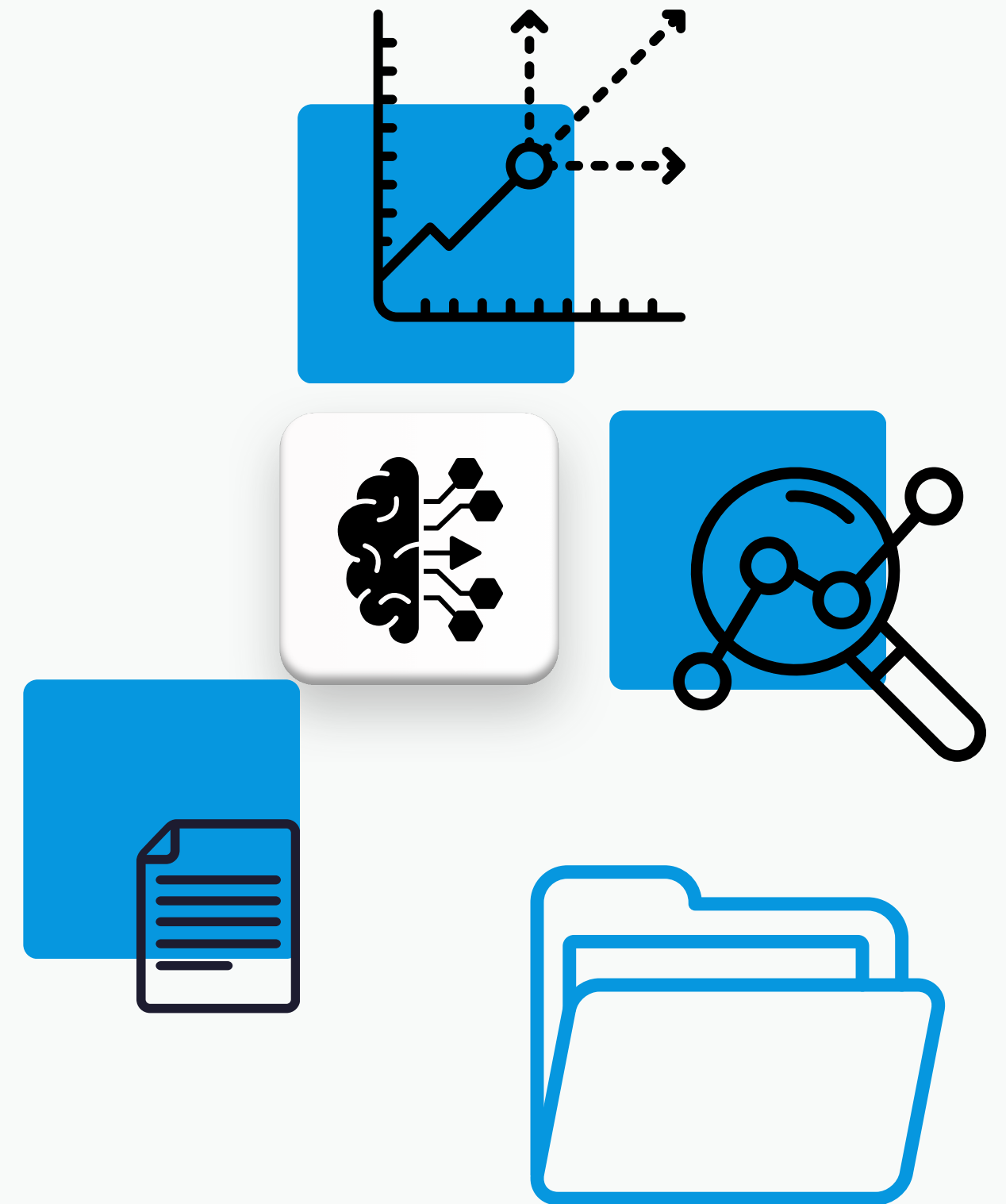
The strategic  
advantage behind  
**Context Sensitivity**

**wxrk**s



# What is Context Sensitivity in Wxrks?

We are using stateless models to arbitrate between different linguistic possibilities, not to translate.



Top 16 reasons  
Why our context-  
sensitive approach  
is so beautiful?

1. Because it works with stateless models
2. Because it works with stateless models
3. Because it works with stateless models
4. Because it works with stateless models
5. Because it works with stateless models
6. Because it works with stateless models
7. Because it works with stateless models
8. **Because it works with stateless models**
9. Because it works with stateless models
10. Because it works with stateless models
11. Because it works with stateless models
12. Because it works with stateless models
13. Because it works with stateless models
14. Because it works with stateless models
15. Because it works with stateless models
16. Because it works with stateless models

# Sure but what is a **stateless model?**

It's a system or application that:

- **Processes each request independently** (no memory of past interactions).
- **Does not store information** or user session data.
- Handles **each transaction as self-contained**.



# But what's so terrible about **stateful models**?

Nothing in and of themselves, but they present their own sets of challenges:

## **Security Risk**

Data is stored and learned from, creating compliance liabilities (GDPR, SOC 2, HIPAA).

## **Lack of Control**

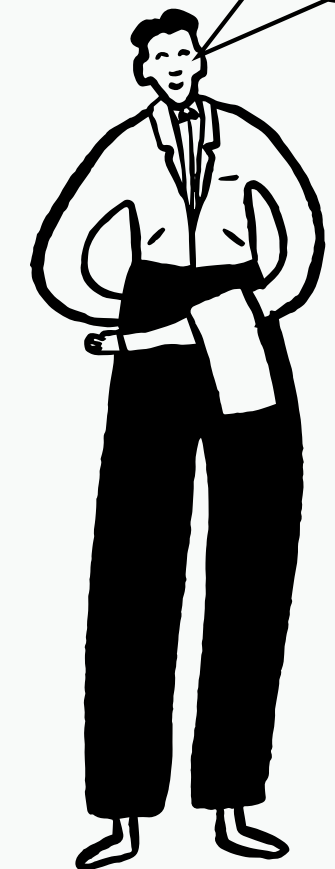
AI learns inconsistently over time, leading to model drift and unpredictability.

## **High Maintenance**

Requires frequent retraining, making it expensive and hard to manage.

## **Vendor Lock-In**

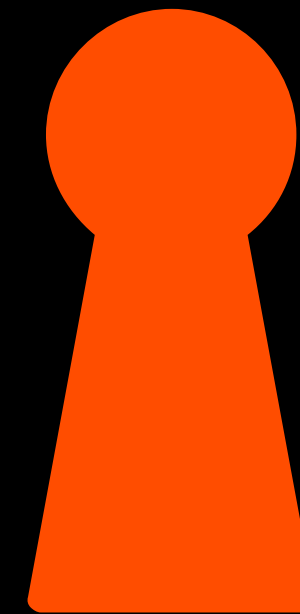
Once trained, switching AI models requires starting from scratch.



can they really be that bad?

And this is how  
**Context Sensitivity**

addresses these challenges  
through stateless models.



# No Retention of Sensitive Data

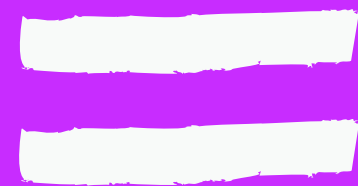


Protects confidentiality  
and ensures compliance  
(GDPR, SOC 2, HIPAA).

# Lower Risk of Model Poisoning or Adversarial Attacks



**No long-term  
memory**



**no data leakage or  
contamination risks.**

# Deterministic & Reproducible Outputs



Same  
input



Same  
output



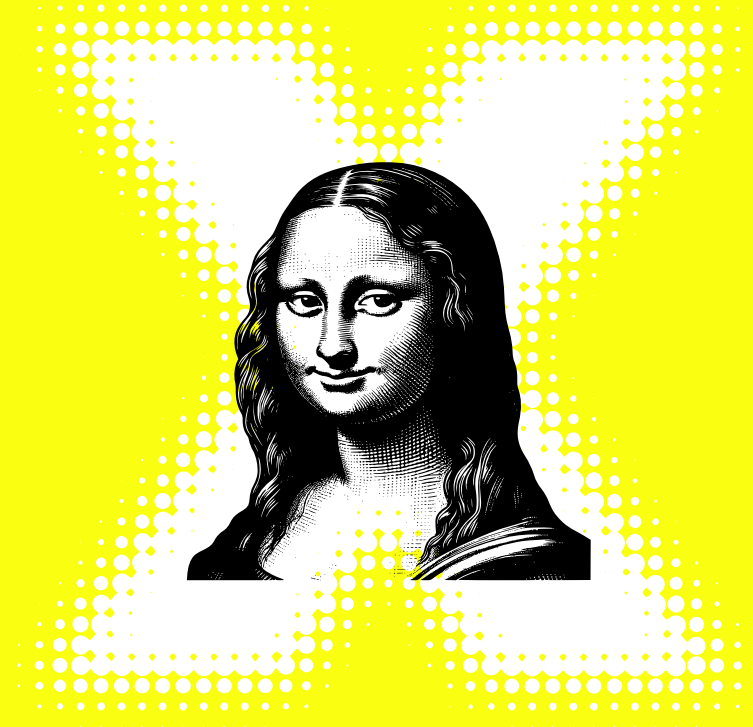
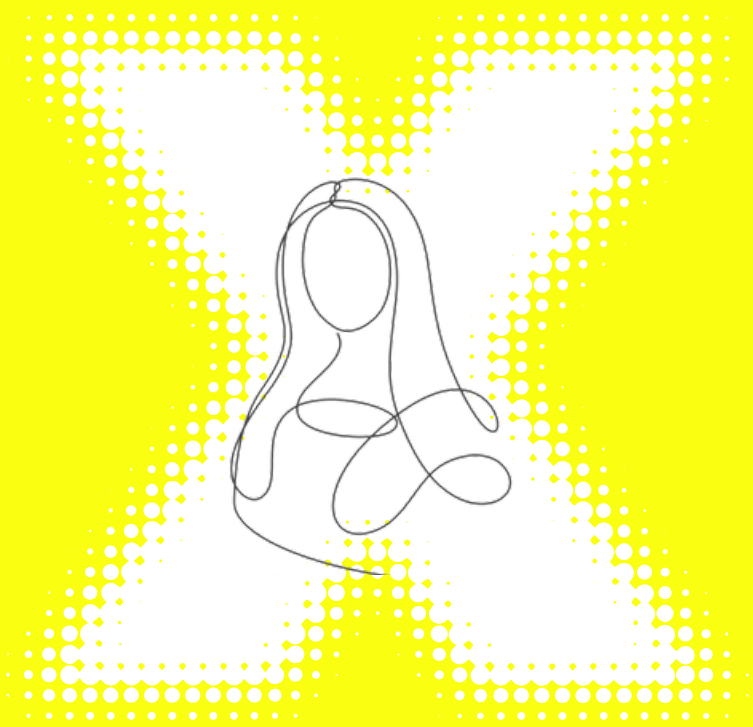
Consistent  
translations.

# Instant Adaptation to User Preferences

Dynamically adjusts terminology and tone for different teams.



# No Model Training Required



⬇️ **Reduces** Infrastructure, Costs and Time.

# Multi-Source Arbitration for Higher Accuracy

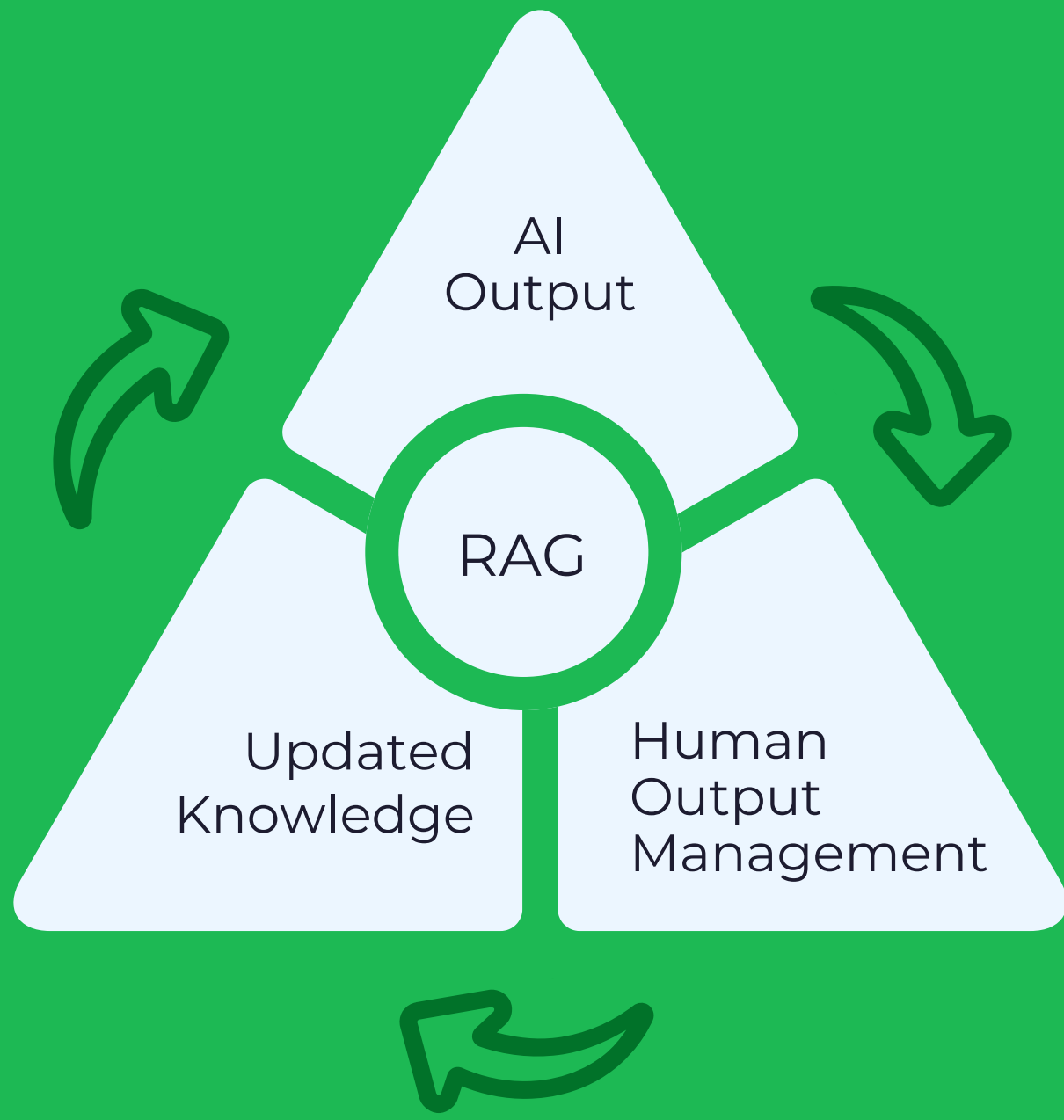


Combines AI outputs  
with human arbitration  
for better quality.

# Efficient Handling of Edge Cases & Ambiguities

Ensures nuanced translations  
backed by a user defined guiding  
linguistic corpus.





# Real-Time Fine-Tuning Without Retraining Costs

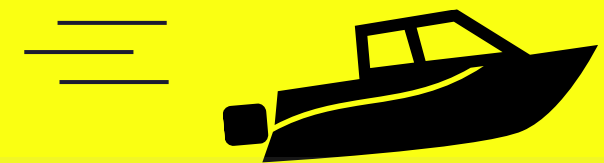
Customizes instantly without expensive model updates.

# Lower Infrastructure Costs & Faster Deployment

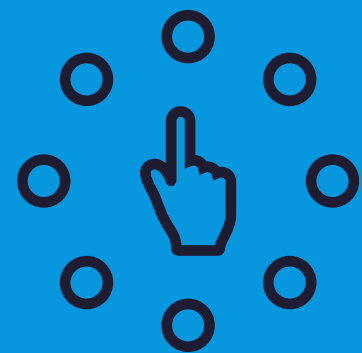
No  
GPU-intensive  
training

=

Lower  
cloud costs.



# Scalability Across Multiple Clients & Domains



Handles multiple clients, brands, and teams without cross-contamination.

# Vendor Neutrality & Avoiding Lock-In



Clients can switch  
AI providers anytime.

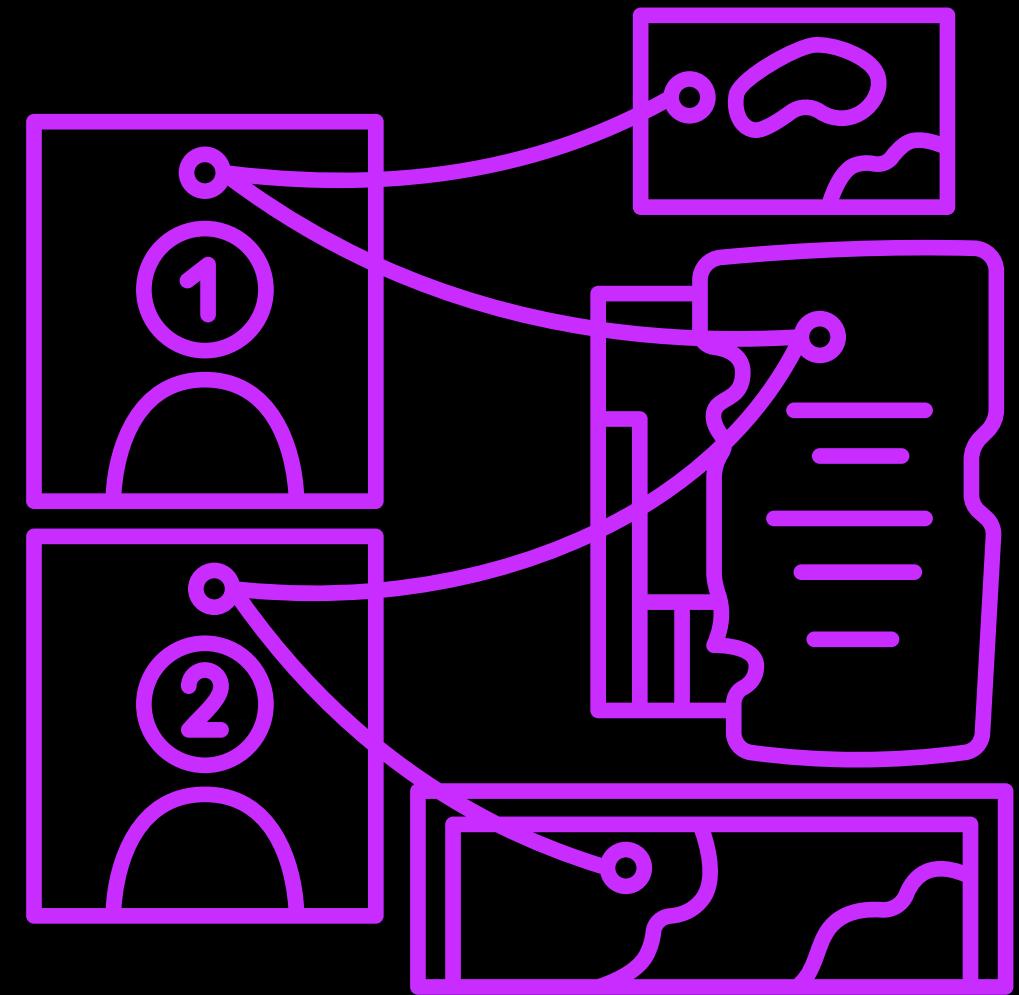
# Future-Proofing Against AI Model Evolution

Newer models can be  
plugged in immediately.



# Enhanced Explainability & Auditability

Every AI-generated output  
can be traced and reviewed.





# Compliance & Regulatory Simplicity

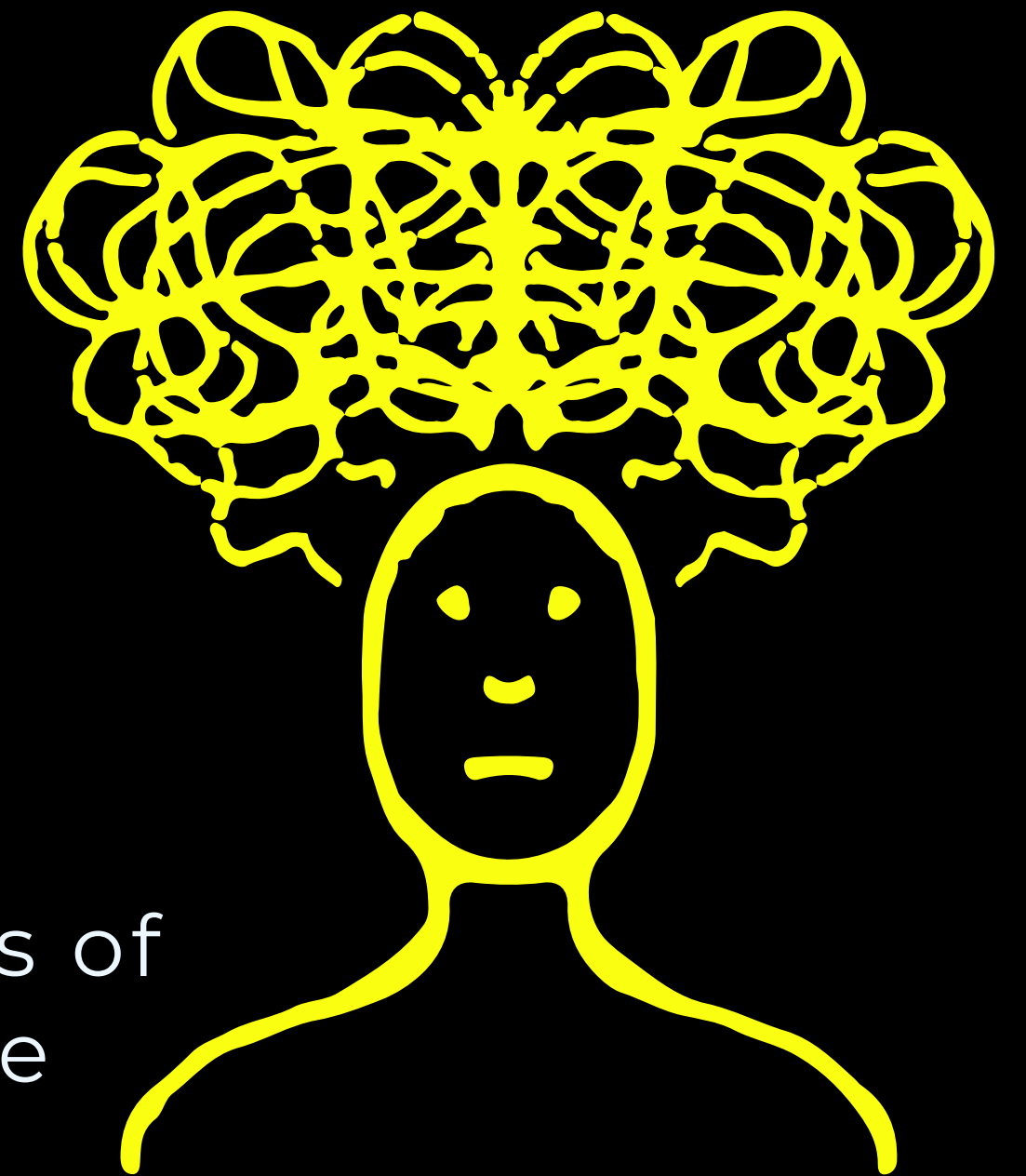
Built-in security features  
eliminate compliance headaches.

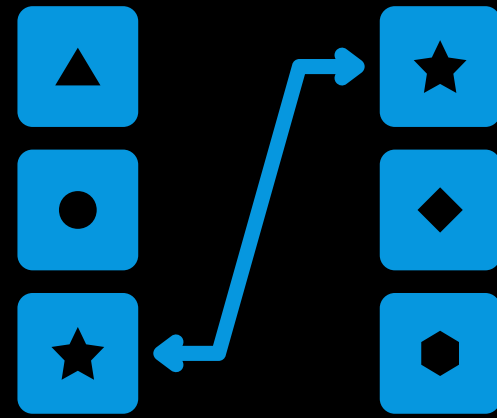
# Reduced Bias & Model Drift Risks

No long-term memory



stable, unbiased AI behavior regardless of human interference





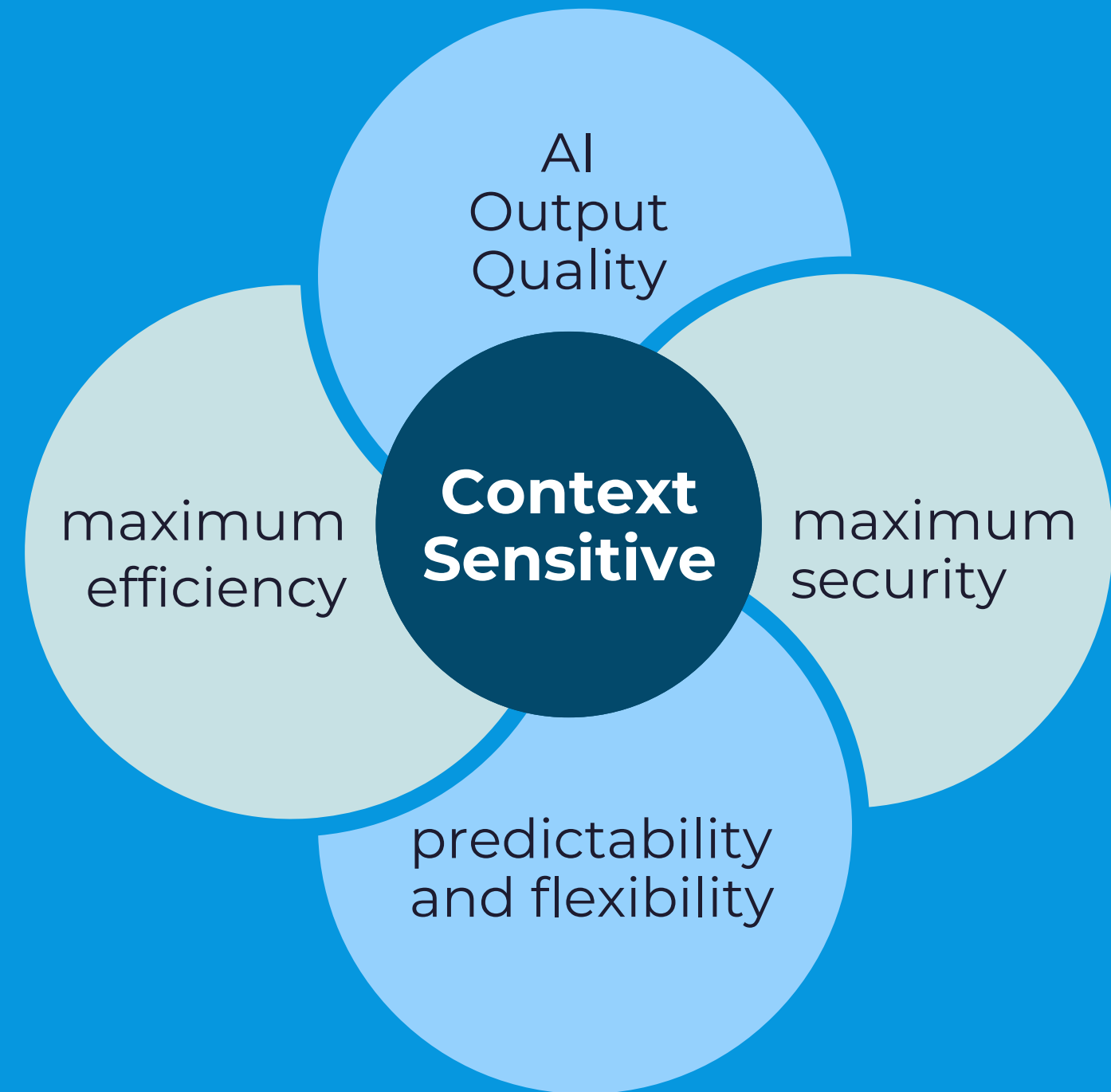
*(Best Model for Each Task)*

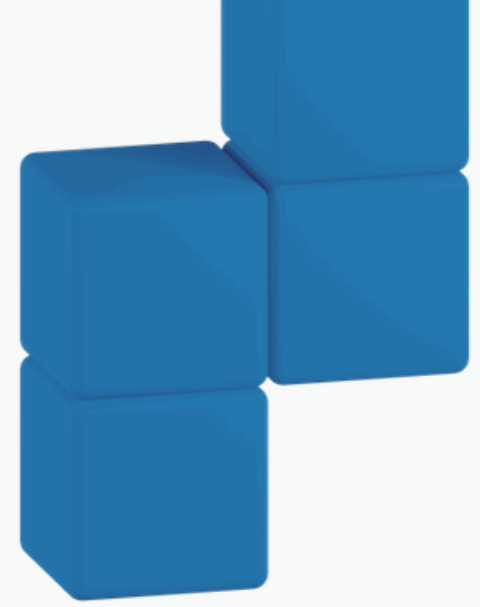
# Use-case matching

Uses the best AI for each use case,  
optimizing performance.

# Context Sensitivity

The Best of All Worlds

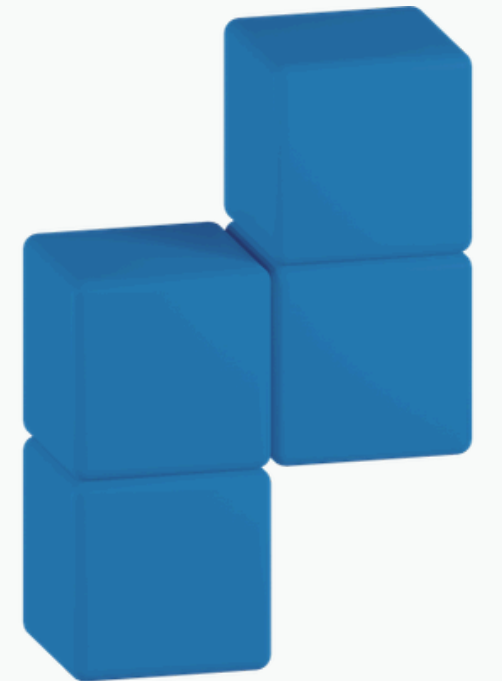




Working with stateless models means

Wxrks takes on the machine learning burden of generating the **context that's just right**

so that we can let models excel at what they do best in a secure, predictable, and scalable way.



**MAKE IT**

**wxrkS**

wxrkS.com

