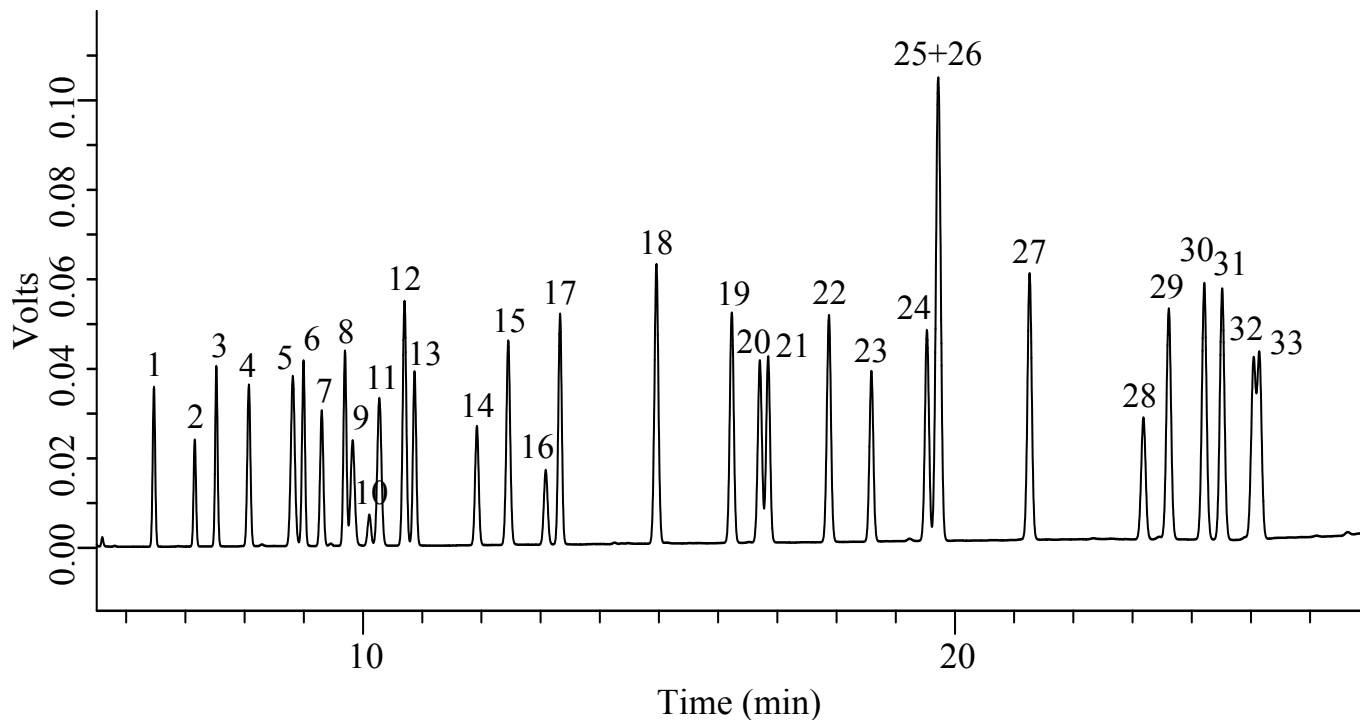


Organic Solvents

Data No. GA222-0644



Conditions

System	: GC-FID	11. Carbontetrachloride
Column	: InertCap AQUATIC-2 0.25 mm I.D. x 60 m df = 1.4 µm	12. Benzene
Col. Cat. No.	: 1010-19166	13. 1,2-Dichloroethane
Col. Temp.	: 60 °C - 4 °C/min - 150 °C (7 min hold)	14. Trichloroethene
Carrier Gas	: He 200 kPa	15. 1,2-Dichloropropane
Injection	: Split flow 80 mL/min 250 °C	16. Bromodichloromethane
Detection	: FID Range 10 ⁰ 250 °C	17. Dibromomethane
Sample Size	: Analyte in Methanol 0.2 µL	18. Toluene
Analyte	: 1. 1,1-Dichloroethene	19. 1,1,2-Trichloroethane
	2. Dichloromethane	20. Tetrachloroethene
	3. <i>trans</i> -1,2-Dichloroethene	21. 1,3-Dichloropropane
	4. 1,1-Dichloroethane	22. Dibromochloromethane
	5. 2,2-Dichloropropane	23. 1,2-Dibromoethane
	6. <i>cis</i> -1,2-Dichloroethene	24. Chlorobenzene
	7. Chloroform	25. <i>m</i> -Xylene
	8. Bromochloromethane	26. <i>p</i> -Xylene
	9. 1,1,1-Trichloroethane	27. <i>o</i> -Xylene
	10. 1,1-Dichloropropene	28. Bromoform
		29. 1,1,2,2-Tetrachloropropane
		30. 1,2,3-Trichloropropane
		31. Bromobenzene
		32. <i>m</i> -Chlorotoluene
		33. <i>p</i> -Chlorotoluene