



TRANSFORMING LIVES TOGETHER



Exceptional Children's Foundation

Transforming Lives Together

Seventy-eight years ago

From the small group of concerned parents and community advocates who founded our mission 78 years ago, to our current network of thousands of business and community partners, supporters, parents, and advocates — the dedication and passion of those who join in collaboration with our leadership and skilled staff to ensure hope, opportunity, empowerment and inclusion fuels our ongoing mission and service impact, transforming lives together . . .

CONTENTS

02	Executive Greeting
03	ECF Programs
12	Impact at a Glance
14	Stories of Success
18	Highlights of the Year
22	Financial Highlights
24	Our Donors
28	Leadership



OUR MISSION is to provide the highest quality services for children and adults who are challenged with special needs — empowering them to reach their greatest potential.



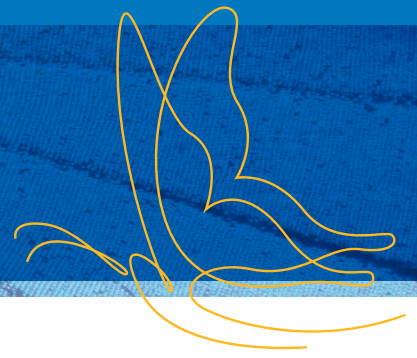
ON THE COVER

ECF Kayne Eras School student, Maya, came to ECF Kayne Eras School last year with behavioral and academic challenges. With the help of her teacher and staff, she's learning how to self-regulate when triggered and to calm herself so that she can be more successful.

She loves dance class, and her favorite things are butterflies, hearts, and everything pink!

Partially AI generated (sky, clouds, and butterfly)

Executive Greeting



VERONICA ARTEAGA
President and CEO



SHELLEY I. SMITH
Chair, Board of Directors

TO OUR EXCEPTIONAL FRIENDS AND FAMILY:

We are honored to share with you the Exceptional Children's Foundation (ECF) 2023–2024 Annual Report.

Over our 78 years of service, Exceptional Children's Foundation has grown from the initial vision of a group of concerned parents into California's most comprehensive provider of services for individuals with learning and developmental challenges. The expansion of our mission and impact on the lives of thousands served each year has been forged by the combined commitment, service and steadfast stewardship of our Board, staff, visionary partners, and our network of volunteers, advocates and ardent supporters.

Together, we answer the call of the community we serve — providing a full lifespan of transformative programs and services that empower possibilities for individuals of all ages with special needs.

Our longevity and growth in impact have been guided by continuing regular analysis, innovation, and sound strategic planning. This year, we launched our 2023–2026 strategic plan, developed drawing upon broad and thoughtful feedback and insights provided by staff; our Board of Directors; policy advisors and field experts, service partners; and participants. The plan builds upon our successes and provides a roadmap of strategic pillars and initiatives that will be pursued over the next three years. It demonstrates our ongoing commitment to meeting the needs of our community and ensuring the advancement of our service mission.

Together this fiscal year we have developed new opportunities to engage and educate our community — providing a forum for exchanging information and resources, and building networks of support for parents, friends and others advocating for individuals challenged with special needs.

We continued to expand supportive services, therapies and learning opportunities for families, young children, and students; training and employment opportunities for adults; and platforms for empowerment and recognition of our exceptional ECF artists.

This year we have witnessed countless milestones met, goals achieved, and possibilities realized, a sample of which we are proud to share in this report.

We invite you to read and see further the impact of your investment, and we thank you — for the accomplishments, smiles and bright futures you help us make possible as we transform lives, together.

Our Programs

ECF was founded in 1946 by a group of parents and community activists who sought to establish a day training program as an alternative to institutional care for individuals with developmental disabilities. Over the past 78 years, ECF's services expanded to meet the changing needs of those we serve, successfully developing and implementing early intervention programs for infants and toddlers, as well as residential, work and day programs for adults. Today, ECF is the only organization of its kind in California, offering a full continuum of care and lifespan services for children and adults challenged with special needs.

A LIFESPAN OF SERVICES



YOUNG CHILDREN

- Early Education
- Emotional Attachments
- Family Functioning
- Ready for Kindergarten
- Family Supports
- Developmental Milestones



STUDENTS

- Academic Success
- Self Esteem
- Confidence
- Learning
- Social & Emotional Well-Being
- Peer Relationships
- Social Skills



ADULTS

- Coping Skills
- Respect
- Friendships
- Training
- Self-Expression
- Employment
- Independent Living Skills

TRANSFORMING LIVES TOGETHER

CHILD PROGRAMS Early Start



THE EARLY START PROGRAM provides early intervention and educational services for children from zero to three years of age who are developmentally delayed or disabled, as well as support for their families. We serve children challenged with autism, Down syndrome, cerebral palsy, intellectual disabilities, speech and language impairments, traumatic brain injuries and many other disabilities or delays.



1,191
CHILDREN
 AND
FAMILIES
SERVED

Center-Based Services

Our **Center-Based Services** offer an inclusive, enrichment-based program for both children with special needs and typically developing children in a warm, family-friendly setting at two Early Start centers. We support each child's individual needs in a blended classroom where they learn and play with children with diverse needs and abilities. Much like a traditional preschool, our program provides socialization activities, outdoor play, healthy meals and field trips, along with occupational, physical and speech therapy for children who qualify for individual therapy. With the help of our licensed therapist, we integrate language enriched and functional skill activities into our classroom curriculum.

Home-based Services

Educators in our **Home-Based Services** provide early childhood education along with parent education in the home on a weekly or monthly basis. After assessing a family's needs, our staff creates a personalized service plan that can include early education, parent education, occupational/speech/physical therapies, medical assessment and medical services.

Speech and Language Therapy

We also provide **Speech and Language Therapy** for children with language processing disorders, hearing loss, language delays, stuttering and voice or articulation disorders. Licensed Speech Therapists help each student learn to communicate more effectively in all areas of their lives.

Family Support Services

To help ensure each child's success, our **Family Support Services** teach families how to better advocate for their child and how they can participate in the services their child is receiving from ECF. Services include parent support groups, legal aid referrals, one-on-one social work support, immigration assistance, crisis counseling, marriage and family counseling, mental health and medical care and on-site emergency food pantries.

Bilingual Staff

All Early Start services are provided by **culturally competent** and **bilingual staff** who can effectively work with families speaking Armenian, Farsi, Russian, and Spanish.



Supporting Families

ECF Early Start Distributes Diapers and Other Necessities to Support Families

ECF Early Start distributed diapers, strollers and car seats to the families of toddlers in the program, donated by our partners at Baby2Baby.

The coordination of donations and distributions is just one of a range of service components Early Start provides to further assist and support families as they work to help their children reach critical early childhood developmental milestones. These include parent support groups, parent education and training, crisis counseling, marriage and family counseling, an on-site emergency food pantry, and a family resource center. To learn more, visit <https://www.ecf.net/young-children/>.

TRANSFORMING LIVES TOGETHER

STUDENT PROGRAM Kayne Eras School

ECF's nonpublic Kayne Eras School (KES) helps TK-12 students develop the social, intellectual, emotional and academic skills they need to learn at their fullest potential.

KES empowers students to explore and achieve, increases their academic and social skills and helps them find joy in learning.





Graduation

ECF CELEBRATES KAYNE ERAS SCHOOL Class of 2024 Graduation

Each classroom is staffed by a credentialed teacher and highly skilled assistant. Our self-contained elementary and middle-school classrooms vary by student need to effectively serve students with emotional/behavioral challenges and specific learning disabilities, as well as students with autism spectrum disorder.

High school students work toward earning a high school diploma. Classes follow common core standards for academics, with individualized instruction to meet each student's ability level. Homeroom teachers serve as case managers who communicate with families and members of each student's educational team of teachers, therapists, administrators, service providers and support staff, who collaborate to help students meet graduation requirements and provide transition planning, college readiness and vocational preparation.

KES has long been recognized for its excellent Enrichment program. Enrichment activities help develop the multiple intelligences we all possess and provide opportunities for students to succeed and express themselves both in and outside of the classroom. Activities include performing and visual arts, technology education, financial education, culinary education, vocational training, self-defense, team sports and community service.

ECF's Therapeutic Services program offers a range of interventions and treatments to encourage the healthy development and growth of students and their families. Students receive counseling to help them manage their emotional and psychological challenges so that they can reach their highest academic potential, improve their social relationships and learn to feel good about who they are.

KES also provides speech/language and occupational therapy, as well as mental health services to both KES and non-KES students and families. KES holds full accreditation status from the Accrediting Commission for Schools, Western Association of Schools and Colleges.

We had an exciting and inspiring celebration of our students' success with a house full of family and friends in June.

Following graduation and awards ceremonies for our elementary and middle school classes, the Class of 2024 Seniors celebrated with a processional and presentation of diplomas and award recognitions, including the President's Award from President Biden, presented by Kayne Eras Director of Educational Services Caprice Wade to Robert Garcia Martinez.

ECF President and CEO Veronica Arteaga welcomed the families and congratulated the 2024 Class on their hard work throughout a period of the historic pandemic and other challenges to achieve this milestone moment in their lives.

Quadir Price delivered the commencement address to his peers, noting, "Your work is going to fill a large part of your life and the only way to be truly satisfied is to do what you believe is great work. And the only way to do great work is to love what you do. If you haven't found it yet, keep looking. Don't settle. As with all matters of the heart, you'll know when you find it. I will miss all of you. I'm proud of us because I know we will shape the world."

TRANSFORMING LIVES TOGETHER

ADULT PROGRAMS

Employment, Art Centers and Residential



ECF provides an array of programs and services to help adults with special needs reach their personal, residential and employment goals.

ECF believes that every adult who wants to work deserves the opportunity to earn a paycheck. Too often, adults with developmental disabilities face barriers to employment due to lack of experience and specialized training.

Exceptional Works is a continuum of employment services that help adults find employment in the community.

The **Accelerated Preparation Program** expedites the time it takes adults with lower-than-average work productivity levels (below 75%) to prepare for more advanced employment training by teaching the work, life and soft skills needed to become employable. Participants

complete the program with a broader set of skills and increased self-motivation to accelerate their transition into Work Readiness classes or the Exceptional Training Academy.

Through instruction and group learning in ECF's **Work Readiness Program**, participants develop the skills needed to conduct a job search and maintain





employment, including: understanding different job opportunities, completing applications, writing a resume, interviewing, professional grooming and hygiene, workplace communication, and personal development and growth.

ECF's **Exceptional Training Academy** offers vocational training in computer literacy, culinary arts, janitorial services, retail sales and warehouse operations. Upon successful completion of their training, participants will have learned the skills necessary to help them secure meaningful employment with a community employer. Participants also have the option to participate in the Exceptional Packaging Solutions program for up to three hours per day, earning minimum wage.

In our **College Classroom Program** and in partnership with educational institutions, ECF staff provide in-class support to adult students, helping them successfully complete vocational training courses.

ECF also partners with NTMA Training Centers of Southern California to give adults the opportunity to become **Computer Numerical Control (CNC) Machinists**, learning how to program, set up and operate CNC machines to produce complex precision parts and tools for the aerospace, military, medical and other industries.

Participants in our **Exceptional Packaging Solutions** program gain paid work experience with packaging and assembly contract work. **Exceptional Employment Solutions** helps participants prepare for and find community-based employment. Once hired, they can receive ongoing job coaching from ECF to support them in their new role. ECF proudly partners with over 70 local businesses to provide a wide variety of employment opportunities in industries including retail, computer software testing, clerical, warehouse operations, culinary services and janitorial.

Our renowned **Art Centers Program** provides fine arts training in a variety of mediums, at four locations throughout Los Angeles. Art produced by ECF adult artists is showcased at juried art shows and is also available for purchase at www.artecf.org.

The **Community Fusion Program** provides opportunities for adults with developmental and intellectual disabilities to experience their community and develop good work habits through meaningful community volunteerism and partnerships with community entities. The program enables participants' self-advocacy and safety in the community, assists in connecting them with community services and activities of their choice, and supports involvement in their interests. Services and supports delivered are designed to enhance independence, self-esteem, and social connections.

Participants in **Exceptional Community Connections** enjoy meaningful volunteer opportunities while integrating into the community.

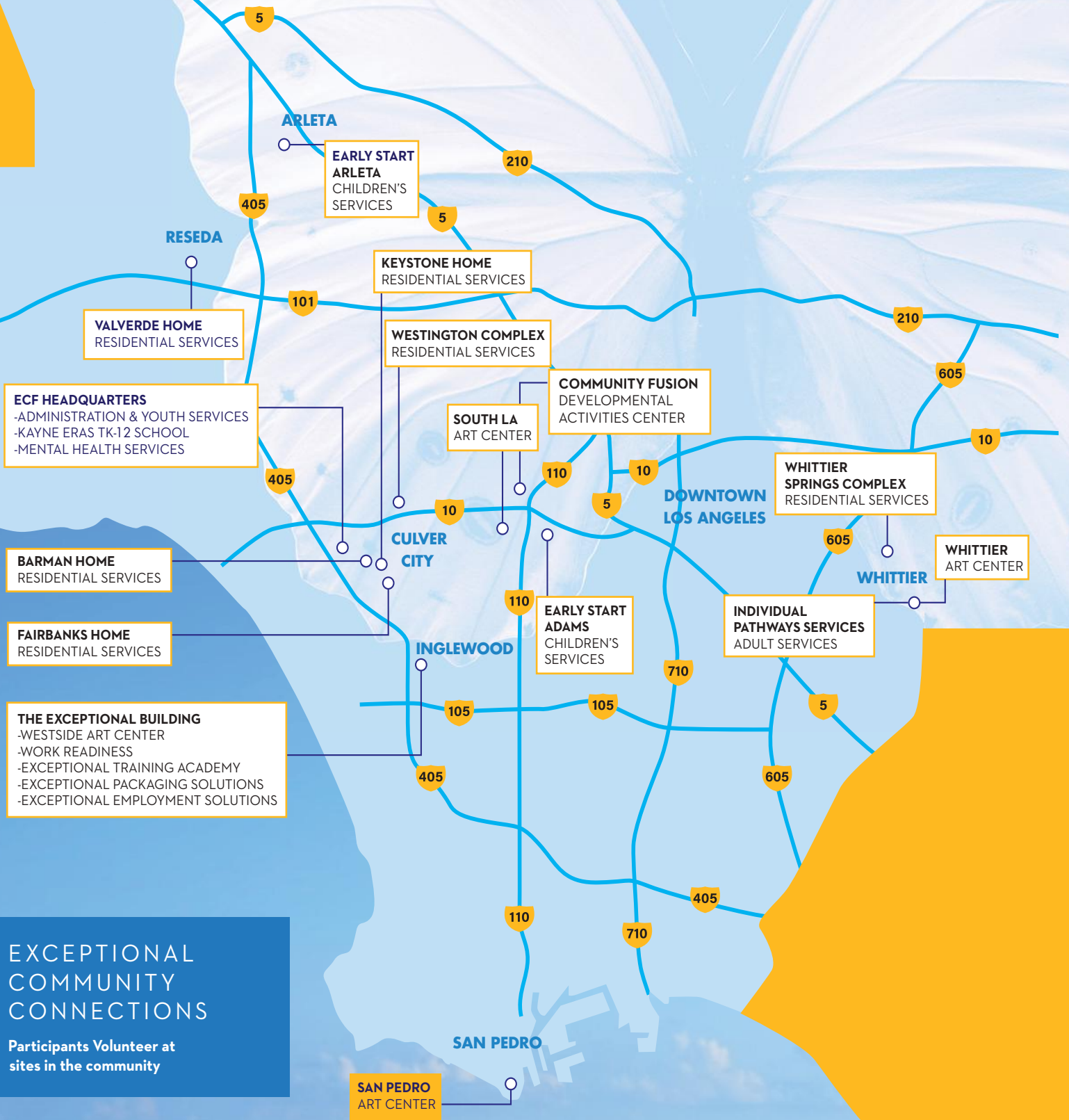
Individual Pathways Program provides in-depth transitional plans for adults, particularly young adults, to help them access community resources and gain more training and skill development to enter the job market, or engage in community volunteering.

The **Residential Services Program** provides housing, life skills training and support for adult clients, ranging from independent living with minimal assistance to fully staffed group homes providing medical care.

To learn more about ECF programs, visit ECF.net.



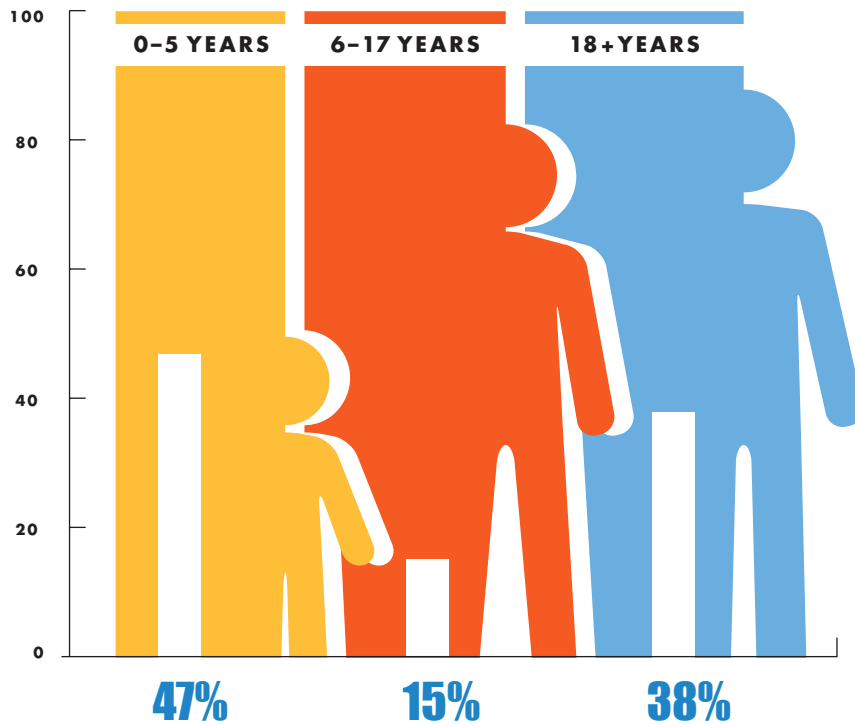
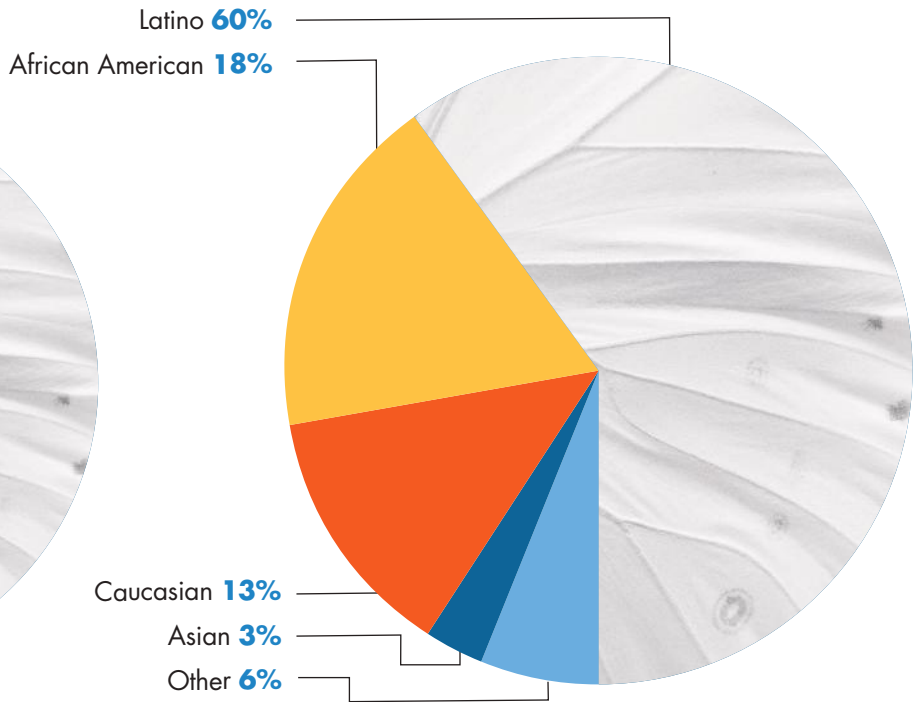
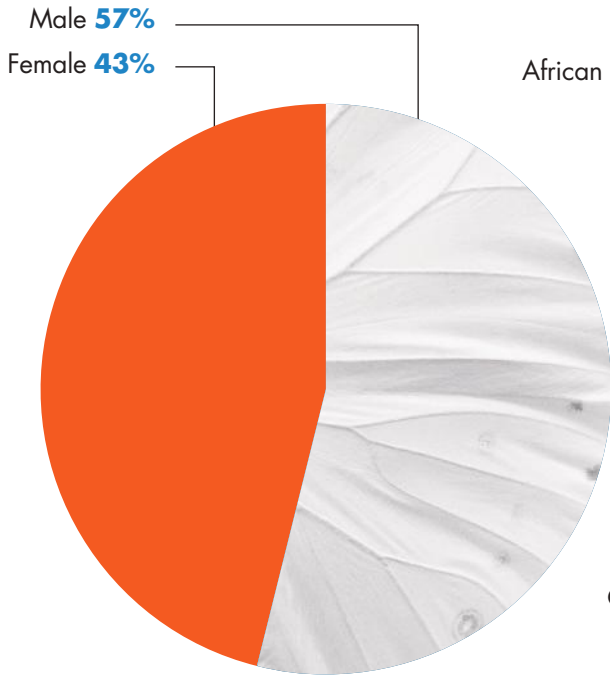
WHERE WE WORK



EXCEPTIONAL COMMUNITY CONNECTIONS

Participants Volunteer at sites in the community

WHO WE SERVE



TRANSFORMING LIVES TOGETHER

ECF IMPACT

at a glance



214,901

OVERALL HOURS
of SERVICE PROVIDED



100%

of PARENTS
of CHILDREN in
ECF EARLY START

report that the program helped them
be a better advocate for their child



18,644

HOURS OF
CLASSROOM-
BASED EARLY
INTERVENTION

97% of ADULT CLIENTS

feel supported in getting
the help they need



17,608

HOME VISITS

for families with infants and toddlers
with developmental delays



30,504

HOURS OF

Warehouse Operations/
Fulfillment Skills, Computer Literacy,
Janitorial and Culinary Training
Provided to Clients in ECF's
Exceptional Training Academy



100%

of PARENTS of
CHILDREN in ECF
EARLY START PROGRAM

report that Early Start helped their
child and that the program made them
feel better about their child's future



84%

OF KAYNE ERAS GRADUATES
are attending four-year colleges, trade schools or pursuing employment opportunities within the community



1,100

PIECES OF
ARTWORK SOLD
BY ART CENTERS PROGRAM
CLIENT ARTISTS



19,010
HOURS OF
JOB COACHING
for adults with developmental disabilities working in community jobs



7,678
HOURS OF **SPEECH, OCCUPATIONAL AND PHYSICAL THERAPY** for infants and toddlers

33,150

HOURS OF
LIFESKILLS TRAINING
and community outings/experiences provided to adults in Community Fusion program




5,088
HOURS OF
RN/LVN CARE
Higher-Level RN/LVN Care Provided at ECF Residential Services Sites

92
EXCEPTIONAL EMPLOYMENT SOLUTIONS

clients placed/working in community jobs



100% 
OF K-12 STUDENTS
participated in enrichment activities

Early Start



MAKAYLA

MAKAYLA'S MOM, MARISSA, WAS EXPERIENCING

a typical pregnancy and all the typical excitement and nervousness when she went into labor and to the hospital to give birth to her first child.

But the birth did not go typically — Makayla was in a breach position. Her mom needed an emergency C-section and Makayla needed immediate medical intervention. She struggled with breathing difficulties and was rushed to neonatal intensive care.

Once home from the hospital, Marissa began settling in with her new baby. But when she took Makayla for her wellness check, the doctor said Makayla had significant delays — she scored very low on testing scales. The doctor referred her to a Regional Center where Marissa learned about options for specialized support for Makayla's development. The Regional Center recommended ECF's Early Start Center for developmental intervention.

"That was a scary time," she says. "Makayla is my only child and all of the usual fears for a newborn were just that much more overwhelming. I just was so grateful to know that ECF Early Start was there for us with positive encouragement and expertise helping children with developmental delays."

One day after she started attending Early Start's Center, perceptive and well-trained teachers noticed Makayla suddenly seeming disconnected and realized she could be having a seizure. They knew the signs and took steps immediately to address and to get Makayla to the hospital. Though she has not had another seizure since that time, Marissa credits the teachers at Early Start for bringing the issue to attention and making sure

she is getting the appropriate care and monitoring. Marissa had noticed Makayla sometimes "spacing out" — just seeming disconnected for brief periods — episodes that may have been seizures she was unaware of at the time.

"The staff and teachers at Early Start are lifesaving in so many ways. Makayla is making such progress. She's so happy and loves the Center. This program really turned things around for her. I'm so grateful for all their knowledge and care!"



Makayla is my only child and all of the usual fears for a newborn were just that much more overwhelming. I just was so grateful to know that ECF Early Start was there for us with positive encouragement and expertise helping children with developmental delays."

"That's what we're here for, at Early Start," says Gabriela Kayacan, Program Director. "To care for the wellbeing and development of the children and to be a supportive arm to parents challenged with the fears and unknowns of helping their young children with developmental delays to thrive."

"Makayla is so charming! She really lights up a room wherever she goes, and she has made tremendous strides during her time here. We know she will continue to be successful as she moves forward into Los Angeles Unified education."

Kayne Eras School



XAVIER

XAVIER IS A 2ND-GRADE STUDENT at ECF's Kayne Eras School. He has ADHD, and a heart condition that requires daily monitoring and medical attention.

Living with both a heart condition and ADHD can be a lot — especially for a second grader. And it can be a lot for the family that loves him.

Before Xavier's family found ECF Kayne Eras School, every day he went to school was a struggle. Xavier often refused to go to school; and when he did attend, he was anxious and volatile. Unable to sit still in his seat and disinterested, he often eloped from class — and was missing important educational milestones.

Fortunately, now at ECF Kayne Eras School, Xavier is getting the support he needs and loves attending school. His teacher, Mr. Harris, makes sure Xavier gets his medication during the school day and supports him with reassurance before his periodic medical scans and procedures, too. With Mr. Harris' help and specialized teaching, Xavier is learning how to successfully present his gifts and talents in a classroom setting. He participates in lots of enrichment activities — music, art, and he loves helping with the school's broadcast morning announcements. He also loves to read, and he writes very well, too, reports Mr. Harris. "Xavier is reading Harry Potter, and it's really capturing his imagination and attention," says Mr. Harris. "He's just made remarkable progress and we all really look forward to the things Xavier will accomplish here at Kayne Eras School."

Now happy at school, Xavier is known for his adorable charm and sweet disposition. He lights up the hallways with his big smile and even bigger hugs for his

principal, school staff and friends. School is a second home to him now.



Xavier is reading Harry Potter, and it's really capturing his imagination and attention," says Mr. Harris. "He's just made remarkable progress and we all really look forward to the things Xavier will accomplish here at Kayne Eras School."

It's a relief and a dream for his family to see him happy and thriving at school. Xavier's mom, Jennifer, says, "We are so appreciative of having a special place for Xavier to grow and learn. We don't know where we would be if we didn't have ECF Kayne Eras School."





STORIES OF SUCCESS

Exceptional Works



ANDREA

ANDREA HAS AN INFECTIOUS GLOW AND BUBBLY giggle as she talks about her love of nature. "I just really want to continue working tending to the environment and nature," she says, "I can't help myself — it makes me so happy!"

Andrea discovered her passion thanks to ECF Exceptional Works' Exceptional Training Academy partnership with Nature Nexxus Institute (NNI). The partnership provides participants opportunities to connect with nature, learn about conservation careers, restore habitat and participate in other activities that promote confidence and increase skills beneficial for future job possibilities.

Andrea first began volunteering through Exceptional Works at Kenneth Hahn State Recreational Area in 2019. In the process, she developed a deep appreciation for the environment, as well as her natural calling. Since she began volunteering, she has been awarded multiple certificates for her exemplary volunteer work.

Through the Exceptional Works partnership, ECF clients can also earn a certificate in a free course led by NNI staff through West Los Angeles Community College. With the certification, clients are eligible to apply for the NNI's Summer Fellows Program, providing seasonal paid positions. Andrea applied and interviewed and was selected as a paid Summer Fellow.

In July, she began working at the Baldwin Hills Scenic Overlook and Kenneth Hahn State Recreational Area, earning minimum wage with a cohort of 15 people in the Habitat Restoration field. Andrea is involved with

the CDC Foundation Project, which brings together the cohort and The Kaiser Permanente Bernard J. Tyson School of Medicine (KPSOM) students from Pasadena. Andrea and her group are working with the students conducting interviews and collecting community stories about relationships related to nature.



Absolutely I plan to continue working to help the environment. This is the joy of my life," she says. "I'm so grateful for all the opportunities I have had and all that I have learned here at ECF!"

"Andrea is an expert at conducting informational interviews, thanks to her training at Exceptional Works," says ECF Job Readiness Specialist Mark Anthony Campoy. "She is confident at work and making significant contributions through this fellowship. We are all very proud and happy for her."

She still participates in various classes and activities at Exceptional Works — she loves computers, and of course, helping in the Exceptional Works urban garden. Andrea knows very definitely what her life's work is meant to be now. "Absolutely I plan to continue working to help the environment. This is the joy of my life," she says. "I'm so grateful for all the opportunities I have had and all that I have learned here at ECF!"

Art Centers



EDDIE



EDDIE ARRIVES AT THE ECF ART CENTER WESTSIDE

studio each day and flips on his headphones to listen to his favorite music while he works on his art.

His practice, since joining the ECF Art Centers studios in 2008, consists largely of acrylic paintings, mixed medium sculptures, and sketchbook development of text-based work. Greatly influenced by music and vintage fashion, Eddie has branched out recently into designing custom apparel, inspired by his love of classic rock. He cuts a striking figure modeling his painted velvet blazer, and then gets to work on a pair of stylized denim customized with painted peace signs and abstract art any current rocker would want to wear onstage and off.

He loves to show his favorite paintings, which reveal a “who’s who” of musical icons—Janis Joplin, Ray Charles, and more, quizzing with a broad smile, “You know who that is? You do know who that is don’t you?”

His daughter, Melissa, who recently came by the studio from her work to visit and take Eddie to lunch, smiles and says, “He gets excited and full of light when he has finished an art piece. He can’t wait to share his latest creation with me.”



“He’s so much happier now,” says Melissa. “The ECF Art Centers are important because they give adults like my dad a safe space to be imaginative and to explore; a routine to look forward to; and a place to inspire purpose.”

She explains that before her father began coming to the Art Center, Eddie was not active, and he was often unhappy. Now, Eddie finds purpose in his artwork. “The Art Center has definitely improved my dad’s quality of life. It’s a place where he can be creative and share his creativity and artwork with others.”

This year, the Westside studio held its first public fashion show, in conjunction with an art exhibit and sale. Eddie debuted that velvet jacket and jeans, strutting down the show runway and giving a spin to the audience’s applause. He’s looking forward to putting new pieces together for next year’s show.

“He’s so much happier now,” says Melissa. “The ECF Art Centers are important because they give adults like my dad a safe space to be imaginative and to explore; a routine to look forward to; and a place to inspire purpose.”

She adds, “I really want to say thank you to everyone who makes this program possible, because it has such a positive impact on my father’s life, the lives of all of the artists, and the lives of their family members like me.”

HIGHLIGHTS

of the Year

THIS YEAR WE PROUDLY CELEBRATED well-earned recognitions awarded to our management and direct support professional staff — awards recognizing the highest level of service and impact, transforming the lives of those we serve.

RECOGNITION for EXCELLENCE

ECF Manager Renay Jackson Receives National Council of SourceAmerica Employers (NCSE) Management Excellence Award

RENAY JACKSON, ECF EXCEPTIONAL WORKS CUSTODIAL SERVICES MANAGER, was presented with a National Council of SourceAmerica Employers (NCSE) Management Excellence Award in May at the annual XForce National Conference in Florida.

Renay was recognized for his excellence in leadership, commitment to highest-quality services, and his impact on the lives of adults challenged with developmental disabilities.

“**Through his leadership and demonstrated excellence, Renay has positively and profoundly impacted the lives of the client workers he manages.**”

SourceAmerica connects government customers and other organizations to a national network of AbilityOne™ authorized providers that hire people with disabilities.

As ECF's Custodial Services Manager at the West Los Angeles Federal Building, an AbilityOne™ contract, Renay supervises a crew of 14 janitors with developmental disabilities and three job coaches.



He oversees the day-to-day custodial operations, contract compliance and quality assurance standards, and the custodial operations unit at the West Los Angeles Federal Building. His team has been called “the Gold Standard” by SourceAmerica Manager, Account Services GSA/Civilian Michael Smith.

“Through his leadership and demonstrated excellence, Renay has positively and profoundly impacted the lives of the client workers he manages, who earn competitive wages and fair health and welfare benefits that empower them and increase their independence,” says Samson Mulugeta, ECF Director of Client Employment Services, and himself a recipient of the 2019 NCSE Management Excellence Award. “We are thrilled to see him honored with this well-deserved award!”



Mark Wong Campoy Honored with ANCOR 2024 DSP of the Year Award for California

MARK WONG CAMPOY, WORK READINESS SPECIALIST for ECF Exceptional Works, was selected and honored with the ANCOR 2024 DSP of the Year Award for California in April.

ANCOR is the leading advocacy voice nationwide for providers that support people with intellectual and developmental disabilities. The annual Direct Support Professional of the Year Awards is the premier recognition for professionals in the field.



Mark's exceptional passion and dedication empowers the adults he works with and truly transforms lives."

"We are so proud and excited for Mark to receive this well-deserved and prestigious recognition," said ECF President and CEO Veronica Arteaga. "Mark's exceptional passion and dedication empowers the adults he works with and truly transforms lives."

The 2024 Direct Support Profession of the Year awards were presented at the culmination of the ANCOR Annual Conference held in Santa Fe.

ECF is proud to have two exceptional DSPs honored with the DSP of the Year award for the state of California—both Mark Wong Campoy this year and Joelene Walker-Stephens in 2023.

ECF HOSTS INAUGURAL INFORMATIONAL FORUM on Special Needs Trusts

MORE THAN 60 PARENTS, FAMILY MEMBERS AND OTHER GUESTS ATTENDED an Informational Forum on Special Needs Trusts in June at ECF Kayne Eras Center, featuring a panel of experts in planning for the security of loved ones with special needs. The event began with networking followed by a lively and informative panel discussion and Q and A moderated by Jory Rand, co-anchor, ABC7. Featured panelists Steven P. Beltran, Senior Partner, Beltran, Beltran, Smith & MacKenzie, LLP; Jenny Chau, Partner, Law Offices of Hirji & Chau, LLP; Michelle Wolf, JLA Trust; Jennifer Joseph, Financial Services Professional, New York Life; and Samson Mulugeta, ECF Director of Client Employment Services provided critical information, resources and tips for establishing special needs trusts.

The event was co-sponsored by Exceptional Children's Foundation in partnership with New York Life Insurance Company and was the first in a planned annual series of ECF informational presentations focusing on topics relevant to the special needs community.



HIGHLIGHTS

of the Year

CELEBRATING PARTNERSHIPS for INCLUSION

ECF 8th Annual Exceptional Partners Luncheon And Awards Recognizes Local Partners Investing in Individuals with Special Needs

EXCEPTIONAL CHILDREN'S FOUNDATION (ECF) hosted the 8th Annual Exceptional Partners Luncheon and Awards in April, honoring ECF partners creating a more inclusive workforce through employment training, hiring and philanthropy. The event was held at Killer Shrimp in Marina del Rey, emceed by KCAL News reporter Kristine Lazar with a keynote address from Bryce McDonald, Chief of Staff, UCLA Football.



The Los Angeles Rams and these 2024 honorees demonstrate leadership by creating pathways to employment for individuals with special needs, and to a more inclusive future for Los Angeles.

— VERONICA ARTEAGA

Longtime ECF community partner and previous award honoree, the Los Angeles Rams, also announced a new partner initiative providing an annual employment opportunity for a selected ECF special education high school graduate as a member of their Rams Ambassador program. Anthony Brown, an ECF class of 2023 graduate, landed his first job out of high school with the Los Angeles Rams as a Rams Ambassador. In this role, Brown works Rams home games at SoFi Stadium and special events with the organization. Since 2016, the Rams have partnered with ECF's Pathways to Employment Exceptional Packaging Solutions program in Inglewood,



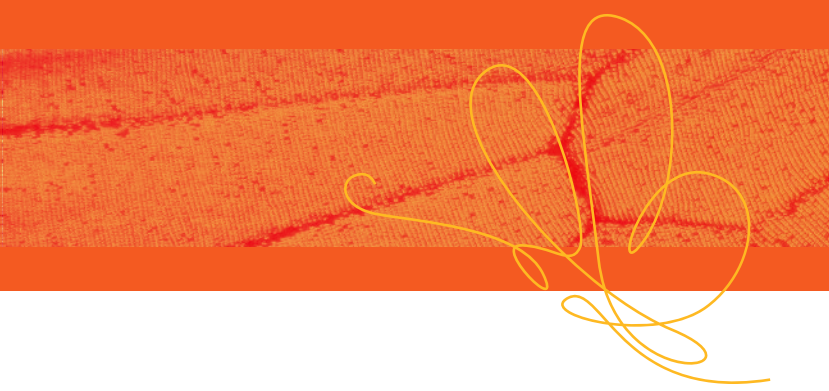
which provides adults with developmental disabilities skills training and paid work experience. The partnership has played a key role in creating jobs for adults with disabilities and raising awareness nationwide.

Four partners were recognized and presented with 2024 Exceptional Partner Awards for their exemplary efforts on behalf of the special needs community: Baby2Baby, Source America, U.S. Department of Veterans Affairs, and United States Department of State Bureau of Consular Affairs Los Angeles Passport Agency.

"The Los Angeles Rams and these 2024 honorees demonstrate leadership by creating pathways to employment for individuals with special needs, and to a more inclusive future for Los Angeles," said ECF President and CEO Veronica Arteaga.

At the luncheon ECF also presented the 5th Annual Steven J. Rose Exceptional Culver City Partner Award to Kristin Larson (Cavanaugh), Vice President of Studio & Production Affairs at Sony Pictures Entertainment. The award recognizes an individual who has helped to shape the future of Culver City and strengthen its business community.





Creating Community Connections

ECF Art Centers Annual Sale and VIP Patrons Reception Celebrate Art Created by Artists with Disabilities and Creates Community Connections

IN OCTOBER, ECF SUPPORTERS, ART LOVERS AND COLLECTORS enjoyed a VIP Patrons Reception and Art Sale at the ECF Art Centers South LA studio, located in historic Engine House No. 18 in the West Adams Art District.

The reception featured a curated selection of hundreds of stunning works created by tenured ECF Art Centers artists, an opportunity to meet the artists, wine and delicious hors d'oeuvres created by ECF's Culinary Training program, and music provided by DJ master and ECF Board Member Leonard Washington.

The event kicked off the ECF Art Centers annual series of art sales, celebrating all four of ECF's progressive art studios throughout LA County supporting professional artists with developmental and intellectual disabilities.

The Fall Art Sale series introduced communities to artists and our studios in Whittier, South Los Angeles, San Pedro and West Los Angeles. Hundreds of new and old friends, families, and art lovers attended each of the sales.

The VIP Patrons Reception and art sales events, conceived and launched last year by ECF Board of Directors member Azita Karimkhany Fatheree, raised more than \$47,000, with 1,026 original pieces by ECF Art Centers artists sold. The final sale was held at the Art Center Westside studio over two days, in conjunction with the Inglewood Open Studios 14th Annual Art Walk.



REVENUE

Program and Other Revenue

Regional Centers – Tuition and Fees	\$ 11,964,473
Unified School Districts – Tuition and Fees	2,757,755
DMH Contract	2,589,616
ICF Medi-Cal Fees	2,822,736
Non Public Agency Fees	1,077,805
Contract Sales	1,603,066
Authorized Endowment Fund (Spending Policy)	1,089,458
HUD Program Revenue	811,907
MISC Income	261,885
Sale of Merchandise	51,066

Total Program and Other Revenue **25,029,768**

Community Support

Contributions (Net of Special Event Costs \$83K)	1,542,278
In-Kind Donations – KEC Food	31,245

Total Community Support **1,573,523**

TOTAL REVENUE¹ **26,603,291**

EXPENSE

Programs

Early Start	3,816,109
KEC School	3,969,497
Residential Services	3,096,593
Art Centers	2,342,346
Exceptional Employment Solutions (SEP)	2,224,344
Mental Health	1,573,413
Exceptional Works (excluding SEP)	1,394,359
Exceptional Community Connections and Community Fusion	511,397
Diagnostic and Therapy (NPA)	970,669
HUD Properties	846,382

TOTAL PROGRAM EXPENSE² **20,745,109**

Administrative

Administration	2,772,728
Development and Fundraising	878,573

TOTAL ADMINISTRATIVE EXPENSE² **3,651,302**

TOTAL EXPENSE² **24,396,411**

Surplus (Deficit) before Interest & Depreciation Expense **\$ 2,206,880**

* Information in Financial Highlights is Unaudited

¹ Excludes Appreciation/(Depreciation) from Investment Accounts of \$3,005K (Instead of add Spending Policy amount of \$1,089K).

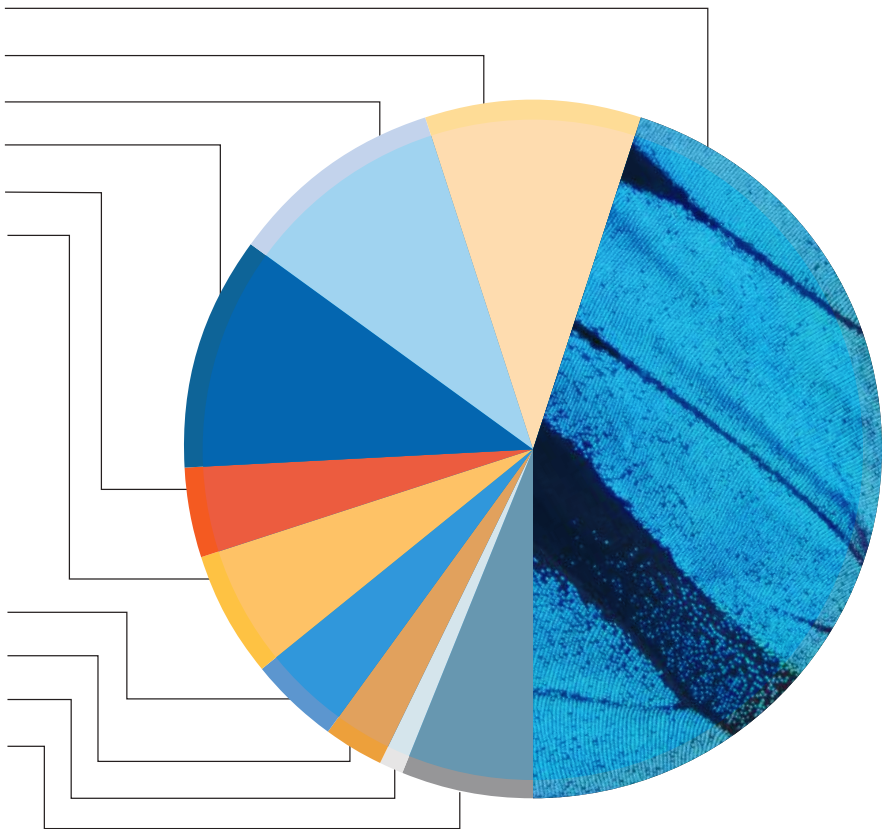
² Excludes \$363K interest and \$768K depreciation expense

REVENUE and EXPENSE

- Regional Centers – Tuition and Fees **45%**
- Unified School Districts – Tuition and Fees **10%**
- DMH Contract **10%**
- ICF Medi-Cal Fees **11%**
- Non Public Agency Fees **4%**
- Contract Sales **6%**

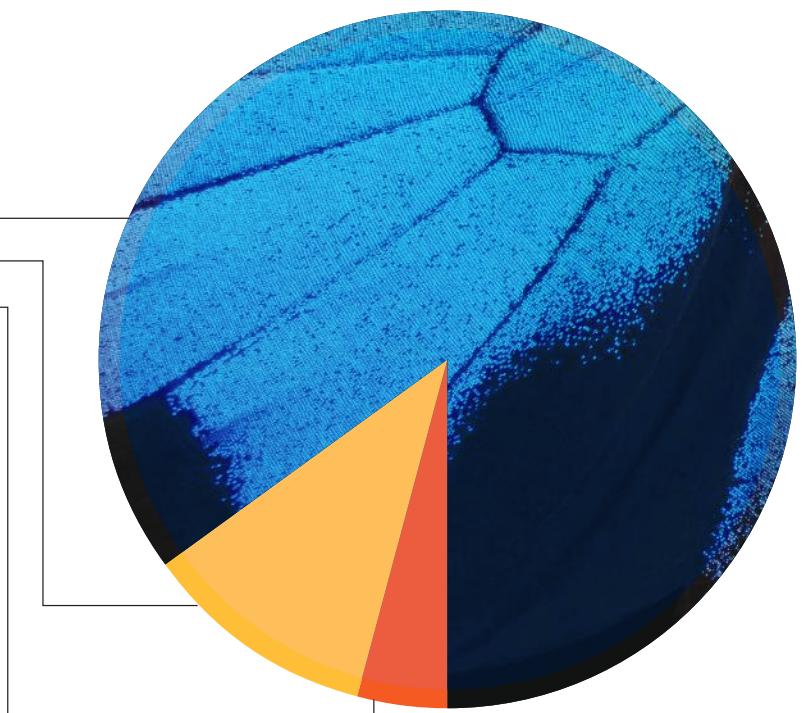
REVENUE

- Endowment Transfers Authorized **4%**
- HUD Program Revenue **3%**
- Sales of Merchandise & MISC Income **1%**
- Fund Raising **6%**



EXPENSE

- Program Expenses **85%**
- Administration **11%**
- Development and Fundraising **4%**



Our Donors

OUR DONORS' SUPPORT AND GENEROSITY help to sustain and ensure the future of Exceptional Children's Foundation.

Annual Donor Recognition July 1, 2023 – June 30, 2024

\$75,000 and above

The Ahmanson Foundation
The Rose Hills Foundation
SHARE, Inc.

\$50,000 to \$74,999

Suzanne & Ric Kayne
Merle Norman Cosmetics
Lynn Nicholas

\$25,000 to \$49,999

Community Partners
The Carl & Roberta Deutsch Foundation
Gerald Ducot
L.L. Foundation for Youth
Milken Family Foundation
James Rothstein
The Steve Tisch Family Foundation
The David William Upham Foundation
U.S. Bank
Paul K. Zimmerman

\$10,000 to \$24,999

Jana & Trevor Bezdek
Anoosheh Bostani
Johnny Carson Foundation
Joseph Drown Foundation
First Bank Foundation
The Joanne Marie and Marcel George Foundation



OUR SON TRENT, NOW AN ADULT, is thriving thanks to the care and support he has always received from Kayne Eras, now Exceptional Children's Foundation. Trent has been in the program over 25 years, and in one of the group homes for the same amount of time. Knowing that Trent is in a nurturing environment that understands and meets his needs gives our family incredible peace of mind. He has been given his own life. That's why we proudly support ECF — so other families can experience the same reassurance, and children with unique needs can continue to thrive. God bless all the staff at ECF."

—HELEN RICHARDS NETHERCUTT

The Morris A. Hazan Family Foundation
IMA Foundation
Tamara & Albert Rabil
Iris & Michael Smith
Shelley & Grady Smith
Terri & James Walker
Jeffrey Wilson & Deidre Powell
Carl E. Wynn Foundation

\$5,000 to \$9,999

Nancy & Leslie Abell
The Albertsons Companies Foundation
Banc of California
Beverly Hills Rotary Community Foundation
Cindy & Bob Broder

Catherine Brown
 The Hugh & Hazel Darling Foundation
 Azita & George Fatheree
 Ella Fitzgerald Foundation
 Insuperity
 Martha & Bruce Karsh
 Lakers Youth Foundation
 Los Angeles Trial Lawyers' Charities
 Cynthia and Michael Malone
 Malcolm McNeil
 Miriam Muscarolas & Grant Abramson
 The Albert Parvin Foundation
 Lynne & Larry Rabineau
 Michelle & Anil Ranavat
 Royal & Johnathan Rodgers
 Robert Ronus
 ServiconCares
 SoCalGas
 Elaine Spierer
 Weingart Foundation
 Winningham Becker & Company

\$1,000 to \$4,999

Alan Amirteymour
 Nancy Aossey
 Emilio Arechaederra
 Veronica & Sergio Arteaga
 Rachel Artenian
 Tika & Bill Ashby
 Debbie & Mark Attanasio
 Bonnie Barnes
 Bayhurst Foundation
 Catherine Benkaim
 Beth Bohn
 Stephanie Bronfman
 Pamela Buffett
 Andrew Chaffee
 The Charitable Foundation
 Christopher Cohick
 Ned Colletti
 Lori & Scott Cooper
 Crescenta Valley Insurance
 Michel Daher
 The Davidow Charitable Fund
 Alexis Deutsch Adler & Robert Adler
 Steven Doren
 Joan & Gerald Doren
 Phyllis & Jim Easton
 EH National Bank



ECF SUPPORTERS TEE OFF to Raise Funds for Children and Adults with Special Needs

THE CALIFORNIA SUN SMILED ON GOLFERS AT THE 2ND ANNUAL ECF GOLF BENEFIT held in March at the beautiful Oakmont Country Club!



Golfers enjoyed a beautiful day on the green with lots of fun contests and prizes, followed by a lively cocktail hour, auction and dinner — all raising critical funds for ECF's programs and services for children and adults with special needs.



SUPPORTING ECF PROVIDES AN OPPORTUNITY to directly impact the lives of individuals with developmental disabilities by offering them pathways to education, skill development, and a brighter future. My participation in the ECF Golf Benefit is a fun way to support this broader mission."

— LOUIE SADD, CEO, DATASTREAM IT





ECF SUPPORTERS AND FRIENDS GATHERED for a night of fun and fundraising for ECF's programs for children and adults with special needs at Hamburger Mary's Legendary Bingo in West Hollywood on June 12th.

The event, hosted by the ECF Associates Board, featured bingo prizes including Ranavat skincare products, wine and coffee baskets—and included a live and lively auction, where guests had an opportunity to bid on amazing items like VIP tickets for UCLA basketball, USC football, Magic Castle and more.

The ECF Associates Board is a dynamic group of young professionals between the ages of 22 and 40 using their time, talent and resources to help advance the mission of ECF.



THERE ARE FEW THINGS MORE GRATIFYING than helping each individual become the best that they can be. Kayne Eras School and ECF are there to give each exceptional person the help they need to live lives with opportunity and dignity and respect. We are proud to be supporters for over 20 years."

—MIRIAM MUSCAROLAS & GRANT ABRAMSON

- Joshua Ellin
- David Feldman
- Karin & Jonathan Fielding
- Lynn and Thomas Finkelor
- Sandra & Mark Flagel
- Dorothy Fleisher
- Linda & Martin Frank
- Stuart Freeman
- Joel Fried
- Gallagher
- George C. Hopkins Construction
- Claudia & Charles Hartwig
- Hollywood Park Casino
- Jeri Jones & Robert Farkas
- Jenni Kayne
- Lenore & Fred Kayne
- Bridget Gless Keller & Paul Keller
- Anita & Allen Kohl
- James Korsen & Sandi Coapman
- Alice & Nahum Lainer
- Deborah & Harry Langenbacher
- Kimberly Lewis
- Jennifer Lewis
- Emily Lloyd
- Los Angeles Rams
- Carol & Doug Mancino
- Kevin McClenton
- Mary Milner
- Pamela Morton
- Merle & Peter Mullin
- Vartan Nazerian
- Helen & Jack Nethercutt
- Stacy Horth-Neubert & Aaron Neubert
- Patti & Peter Neuwirth
- Chris & Richard Newman
- Lan Nguyen
- Renvy Pittman
- Debbie & Rick Powell
- Rodney Propp
- Sonhui & James Robilotta
- Jaye Rogovin
- Patricia & Michael Rosenfeld
- Esther & Rick Rosenfield
- Luke Rutledge
- Carol & Donald Schireson
- Molly Segal
- Rhonda & Larry Sheakley
- Laura & William Siart
- Rosa & Bob Sinnott

Sony Pictures Entertainment
 Grace Helen Spearman Charitable Foundation
 Spogli Family Foundation
 Lacey Stoffer
 Jocelyn Tetel
 Linda Thieben
 Barbera Thornhill
 Maria Hummer Tuttle & Bob Tuttle
 James Van de Voorde
 Stuart Vetterick
 Gillian & John Wagner
 Terrence White
 Jacqueline Wickser
 AJ Wilder
 John Winters
 Wendy & Jay Wintrob
 Philip & Elaine Yalowitz
 Julia & Monty Zimmerman

This annual report covers the fiscal year July 1, 2023 — June 30, 2024. Gifts received after June 30, 2024 will be acknowledged in the next annual report. We have made every effort to ensure the information included is accurate. If an error has been made, please accept our apology and contact Maxine Moshay at mmoshay@ecf.net.



ECF LONGSTANDING PARTNERS, SHARE, INC.

provided generous support for the Experiential Learning and Educational Therapy programs at ECF Kayne Eras School. ECF President and CEO Veronica Arteaga joined members and guests at the SHARE Grant Reception.

ECF's nonpublic special education Kayne Eras School (KES) helps TK-12 students develop the social, intellectual, emotional and academic skills they need to learn at their fullest potential. KES Experiential Learning and Educational Therapy empowers students to explore and achieve, increases their academic and social skills and helps them discover joy in learning.



LOS ANGELES TRIAL LAWYERS' CHARITIES Beautify Early Start Site in Arleta

ON APRIL 30TH, THE FINAL DAY OF AUTISM AWARENESS MONTH, Los Angeles Trial Lawyers' Charities (LATLC) w volunteers joined families at ECF's Arleta Early Start Program site to do some spring planting and beautification, while sharing lots of smiles and fun.

LATLC previously landscaped the back playground at our Arleta site and this year decided to make the entrance more inviting to everyone. Everyone enjoyed the opportunity to work and play together as we created and celebrated our beautiful new entrance, along with a new season of possibilities for the young children and families we serve.

WE'RE A CREATIVE RECOVERY LA GRANTEE!

#LACountyArts

ECF IS PROUD TO HAVE BEEN AWARDED AN ARTS RELIEF AND RECOVERY GRANT from the Los Angeles County Board of Supervisors, the American Rescue Plan and the Los Angeles County Department of Arts and Culture in support of the ECF

Art Center South Los Angeles. LA County's Creative Recovery LA initiative is designed to address pandemic impacts on the arts and the creative economy, one of the most economically significant and hardest-hit sectors, while leveraging the unique capacity of arts and culture to catalyze our region's economic recovery, civic connectivity, and community wellbeing.



THE EXCEPTIONAL CHILDREN'S FOUNDATION is privileged to have highly qualified and deeply committed community leaders serving on its Board of Directors and Board of Governors. In partnership with an experienced Executive Management Team, these individuals give generously of their time and resources to help fulfill the organization's mission.

BOARD OF DIRECTORS & BOARD OF GOVERNORS

2023–2024 Board Officers and Board Members

Shelley I. Smith, Esq.
President & General Counsel,
GrayShell Consulting
Chairperson

Anil Ranavat
Chief Financial Officer,
Homebound, Inc.
*First Vice Chairperson/
Vice Treasurer*

Malcolm McNeil, Esq.
Partner, Arent Fox
*Second Vice Chairperson/
Secretary*

Thomas Hopkins
Vice President, U.S. Bank
Treasurer

Ellen Turner
Principal and Vice-President –
Operations,
Turner Techtronics, Inc.
Assistant Secretary

Steven P. Beltran, Esq.
Senior Partner, Beltran, Beltran,
Smith & MacKenzie, LLP
Immediate Past Chair

Leslie B. Abell, Esq.
Attorney, Leslie B. Abell,
A Professional Corporation

Fred Alavi
Managing Director,
EH National Bank

Lisa C. Anderson
Client Advocate

Russell Ching, Esq.
Attorney, Stonesifer & Chong

Scott Cooper, CMC
Principal, Pegasus Squire, Inc.

Azita Karimkhany Fatheree
Disability Rights Advocate

Monica M. Jaramillo
Co-Founder, LABEL the Agency

Mary Kayne
Community Volunteer

Kimberly Lewis, Esq.
Ervin, Cohen & Jessup, LLP

Larry Rabineau, Esq.
Attorney, Law Offices of
Larry Rabineau

Eugene Siciliano
President, Western
Management Associates

Ralph Walter, D.Phil, CFA
Visiting Fellow,
Kellogg College, Oxford

Leonard Washington
Digital Media and Business
Operations Consultant

Montgomery Zimmerman
Vice President, Client Strategist,
BNY Mellon Wealth Management

Paul K. Zimmerman
Independent Businessman,
Imperfect Partners

BOARD DIRECTOR EMERITUS
Suzanne Kayne

BOARD OF GOVERNORS
Barbara Cull
Founder, Kayne Eras Center

Monte Markham

Jerry Moss In Memoriam

SHARE, Inc.

Honorable Dickran Tevrizian

EMERITUS
Robert D. Shushan, Ed.D.
*President Emeritus —
In Memoriam*

Scott D. Bowling, Psy.D.
CEO Emeritus

EXECUTIVE STAFF
Veronica Arteaga, LCSW
President & CEO

Maryam Hamedaninia
Chief Programs Officer

Maxine Moshay
Interim Chief Development Officer

TuLynn Smylie
Chief Operating Officer

Sonhui "Sunny" Robilotta
Chief Financial Officer

Thank you



Learn more about transforming lives together. Visit **ECF.net**.



DONATE TODAY
ecf.net/donate

Click Here
or visit ECF.net
to sign up for our newsletter
and to learn more.

Follow Us
[@ConnectwithECF](https://twitter.com/ConnectwithECF)
   



Exceptional Children's Foundation

5350 Machado Road
Culver City, CA 90230
(310) 204-3300
info@ecf.net | www.ECF.net