

3LM Catalogue 2023-2024



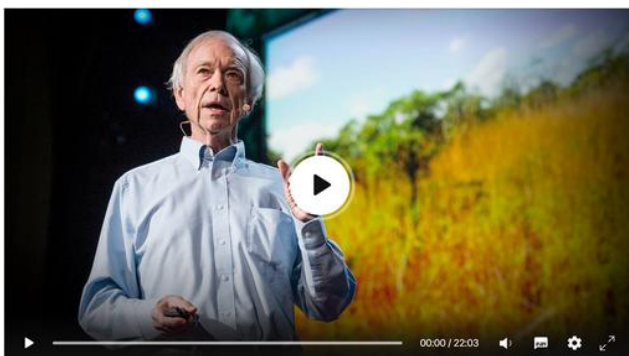
5th of January 2023

Dear Reader,

Increasingly, people are experiencing success regenerating soils by managing holistically. For example, Fernhill Farm won Sheep Farmer of the Year in October 2022, thanks to their holistic approach.



Watch, Demonstrating Achievable Change, with Fernhill Farm.



Watch, How to fight desertification and reverse climate change, with Allan Savory

Is Holistic Management new to you? Then we invite you to watch Allan Savory's TED Talk, *How to fight desertification and reverse climate change.*

Start your journey by taking a course online, in-person, or on your own farm. Then set your baseline with Ecological Outcome Verification so you can monitor results over time.



Christopher & Sheila Cooke, co-hub leaders for 3LM

With all best wishes for a bountiful 2023!

Christopher & Sheila Cooke

Table of Contents

CURRICULUM

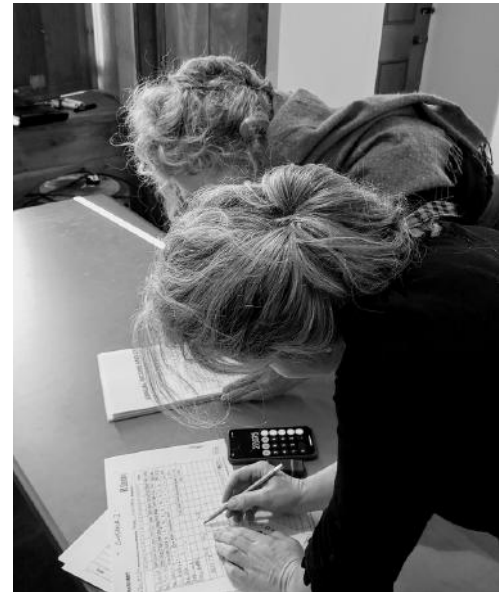
- 6 Course Overview
- 7 What's included with training?
- 8 How it works
- 9 Case Study

COURSES

- 12 Online Holistic Management Courses
- 14 In-Person Holistic Management Courses
- 21 Bespoke & Self Study Courses
- 22 Low Stress Livestock Handling

SUPPORT PROGRAMMES

- 26 Accreditation by Savory Institute
- 28 Ecological Outcome Verification (EOV)
- 29 Forms: Grazing & Finance
- 30 Funding
- 31 Mentoring
- 32 Webinars & Workshops
- 33 Contact Us



CONTACT DETAILS

+44 7446 780081
info@3LM.network
www.3LM.network

[APPOINTMENT](#)

[NEWSLETTER](#)

[SOCIAL MEDIA](#)

Curriculum

I have taken part in four trainings with 3LM, two in person, two online. I can honestly say I'd do it all again in a heartbeat. I highly recommend anyone who is interested to go for it, don't hold back.

-- *Andreas*





Course Overview



Become part of a local movement for regenerating soils by getting your Holistic Management training from 3LM, Land and Livestock Management for Life. 3LM is the Savory Network hub in the UK and Ireland, and understands how to adapt Holistic Management to a *nonbrittle* habitat, where clay soils turn to muck in Winter. 3LM offers courses online, in-person, and bespoke on your land.

COURSE 1 **Holistic** **Management** **Fundamentals**

This whole system approach to resource management enables you to achieve economic social and ecological outcomes.

COURSE 2 **Holistic Financial** **Planning**

This simple-to-use, cash-based planning process increases profit, whilst improving quality of life and land health.

COURSE 3 **Holistic Planned** **Grazing**

Planned grazing Increases grass productivity and crop yields; improves land and livestock health; increases biodiversity.

COURSE 4 **Holistic Ecological** **Monitoring & Land** **Planning**

When you change your management practice, it is essential to monitor the land for the earliest signs of change.

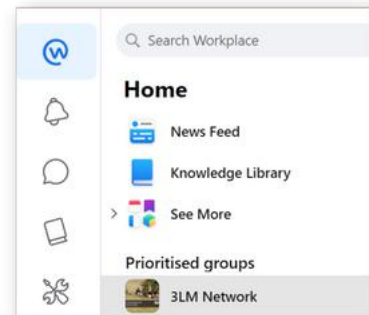
Low Stress **Livestock Handling**

Handling livestock calmly is essential for their health & yours. Instructor: Miriam Parker, OBE.

What's included with training?

1 REGRARIANS WORKPLACE

When you take any 3LM course, you receive a lifetime membership to Regrarians Workplace, a private online global community of 4,000+ people regenerating soils and ecosystems.



Regrarians Workplace

2 COURSE MATERIALS

We provide you with course manuals, ebooks, and forms. All of these are available online in the Regrarians Knowledge Library.

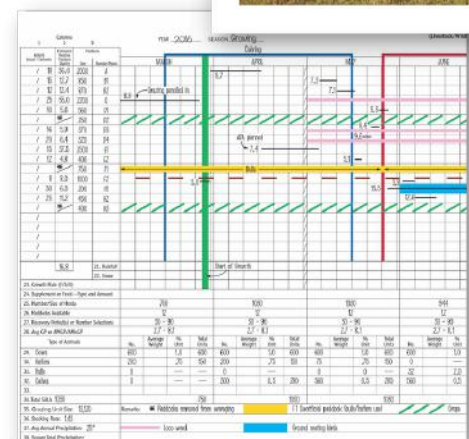


3 MENTORING

Each class has practical exercises that enable you to apply what you have learned to a case study or to your own situation. Our instructors review your work, give feedback and answer questions.

4 ACCREDITED CURRICULUM

We follow the Savory Institute accredited curriculum so that if you want to become a Accredited Professional you have all the knowledge you need.



How it Works

DISCOVERY CALL

During our call we'll answer your questions, and help you select the programme that best suits your situation. [Book a time using this link.](#)

REGISTER FOR TRAINING

Click the REGISTER button in this catalogue for your preferred course and it will take you to a registration page. If you prefer bespoke training, please email us at: info@3LM.network, or telephone: +44 7446 780081.

SETTLE PAYMENT

If you pay online you can pay by credit card or PayPal. You are able to pay in monthly instalments when purchases are in excess of £450 – simply tick the option on the right side of the screen.

To pay by BACS, send an email to us and we will send you an invoice. Email: info@3LM.network

WELCOME EMAIL

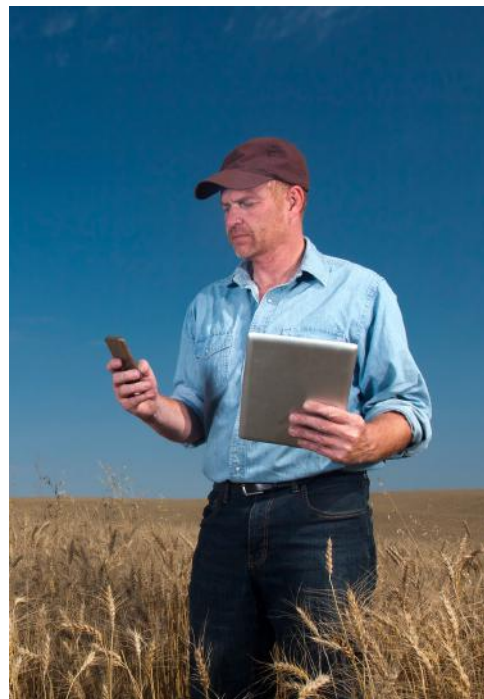
Look for a "Welcome Email" confirming your registration (sometimes it slips to junk mail – if so, please whitelist us). Separately, you will receive an email from Regrarians Workplace, inviting you to join the class Group and Knowledge Library.

MAKING IT REAL

In online training, you will be provided with practical homework (often done outdoors) to help you make progress between sessions. We do the same homework as exercises during in-person courses.

RECORDINGS

If you miss a session, or want to listen again later, you have lifetime access to recordings in the Knowledge Library of Regrarians Workplace.



"A comprehensive, well-structured course that aids the student to tailor existing knowledge to suit their own situation and push them in the right direction towards profitable, regenerative agriculture."

-- Joel Kerr



Case Study: Less Stress More Grass



[The Story of Dairy | Regenerative Agriculture Documentary](#)

Organic dairy farm, Dharma Lea, experienced economic, social and ecological benefits from Holistic Management.

[DOWNLOAD
CASE STUDY](#)

Benefits after three years of managing holistically:

- ✓ 120% increase in the number of grazing days per year.
- ✓ A drop in feed cost from 60% to 48% of the total cost of production.
- ✓ A significant improvement in livestock health, with a key indicator – mastitis – dropping from 73% to 3% within the herd.
- ✓ Improved milk quality, with a 10% increase in total milk solids.



Courses

There are few frameworks or models of management I could recommend globally, but Holistic Management is one of them, and 3LM has done a beautiful job of presenting this valuable material and making it accessible.

-- Susan



Online Courses

COURSE 1

Holistic
Management
Fundamentals

ONLINE SERIES Tuesday Nights Starting January 2023

10 Jan – 28 Feb 2023
6:30 PM - 9:30 PM, London
SKU505
£450

[REGISTER](#)

ONLINE SERIES Tuesday Nights Starting March 2023

7 Mar – 25 Apr 2023
6:30 PM - 9:30 PM, London
SKU510
£450

[REGISTER](#)

COURSE 2

Holistic
Financial
Planning

5 Sep – 24 Oct 2023
6:30 – 9:00 PM, London
SKU555
£375

[REGISTER](#)

5 Sep – 24 Oct 2023
6:30 – 9:00 PM, London
SKU555
£375

[REGISTER](#)

COURSE 3

Holistic
Planned
Grazing

31 Oct – 19 Dec 2023
6:30 PM – 9:00 PM, London
SKU560
£375

[REGISTER](#)

31 Oct – 19 Dec 2023
6:30 PM – 9:00 PM, London
SKU560
£375

[REGISTER](#)

COURSE 4

Holistic
Ecological
Monitoring
& Land Planning

2 May – 20 Jun 2023
6:30 PM – 9:00 PM, London
SKU545
£375

[REGISTER](#)

7 May – 25 Jun 2024
6:30 PM – 9:00 PM, London
SKU590
£375

[REGISTER](#)

**BUY THE SERIES
and save £300.**

£1275 vs. £1575

Buy the series, save £300.
Pay in 4 instalments.

[REGISTER](#)

Buy the series, save £300.
Pay in 4 instalments.

[REGISTER](#)

Prefer a different combination of dates?
We can help. Please contact us:
Email: info@3LM.network
Tel: +44 7446 780081

ONLINE SERIES
Friday Mornings
Starting May 2023

5 May – 23 Jun 2023
9:30 AM - 12:30 PM, London
SKU515
£450

[REGISTER](#)

12 Jan – 1 Mar 2024
9:30 AM - 12:30 PM, London
SKU586
£375

[REGISTER](#)

8 Mar – 3 May 2024
(Skip 7 Apr)
9:30 AM - 12:30 PM, London
SKU587
£375

[REGISTER](#)

12 Jul – 30 Aug 2024
9:30 AM - 12:00 PM, London
SKU591
£375

[REGISTER](#)

Buy the series, save £300.
Pay in 4 instalments.

[REGISTER](#)

ONLINE SERIES
Tuesday Nights
Starting July 2023

4 Jul – 22 Aug 2023
6:30 PM - 9:30 PM, London
SKU520
£450

[REGISTER](#)

5 Sep – 24 Oct 2023
6:30 – 9:00 PM, London
SKU555
£375

[REGISTER](#)

31 Oct – 19 Dec 2023
6:30 PM – 9:00 PM, London
SKU560
£375

[REGISTER](#)

7 May – 25 Jun 2024
6:30 PM – 9:00 PM, London
SKU590
£375

[REGISTER](#)

Buy the series, save £300.
Pay in 4 instalments.

[REGISTER](#)

ONLINE SERIES
Friday Mornings
Starting September 2023

1 Sep – 20 Oct 2023
9:30 AM - 12:30 PM, London
SKU525
£450

[REGISTER](#)

12 Jan – 1 Mar 2024
9:30 AM - 12:30 PM, London
SKU586
£375

[REGISTER](#)

8 Mar – 3 May 2024
(Skip 7 Apr)
9:30 AM - 12:30 PM, London
SKU587
£375

[REGISTER](#)

12 Jul – 30 Aug 2024
9:30 AM - 12:00 PM, London
SKU591
£375

[REGISTER](#)

Buy the series, save £300.
Pay in 4 instalments.

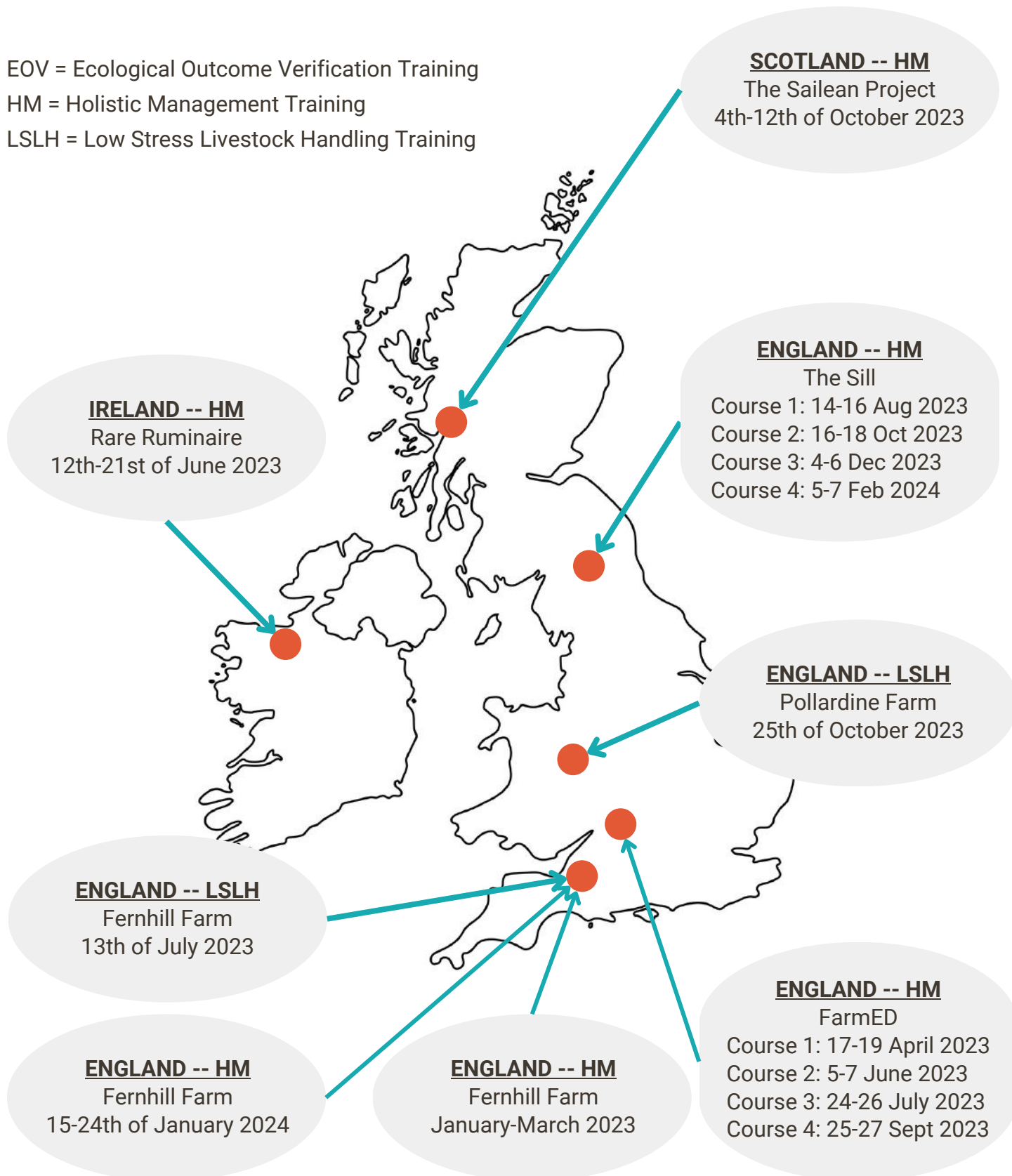
[REGISTER](#)

In-Person Locations

EOV = Ecological Outcome Verification Training

HM = Holistic Management Training

LSLH = Low Stress Livestock Handling Training



FarmED, England

Holistic Management Comprehensive 12-Day Course, FarmED, Oxfordshire, UK

Our partner, FarmED, is the Centre for Farm & Food Education based in the Cotswolds. We are running the training as a cohort over four sessions from April through September. A farm tour is included with each session featuring local regenerative farms.

Course 1, SKU561

Holistic Management Fundamentals
17th-19th of April 2023, 9:30 AM to 5 PM

Course 2, SKU562

Holistic Financial Planning
5th-7th of June 2023, 9:30 AM to 5 PM

Course 3, SKU563

Holistic Planned Grazing
24th-26th of July 2023, 9:30 AM to 5 PM

Course 4, SKU564

Holistic Ecological Monitoring & Land Planning
25th-27th of September 2024, 9:30 AM to 5 PM

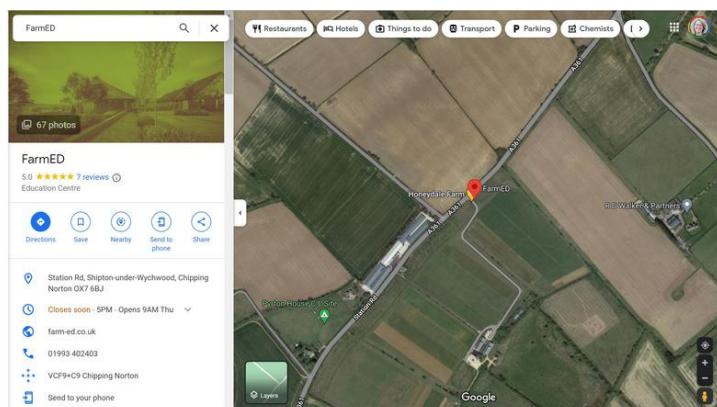


Welcome to FarmED - Farm and Food Education

Price

Comprehensive 12-day training package
includes lunches, coffee/tea breaks & materials
£1950 per person + VAT
10% discount for PFLA members
Bursaries sometimes available

**REGISTER
WITH FARMED**



FarmED

Honeydale Farm
Station Road
Shipton-under-Wychwood
Chipping Norton, Oxfordshire, OX7 6BJ
United Kingdom

Tel: +44 1993 402403

Website: <https://www.farm-ed.co.uk/>

Email: sophie@farm-ed.co.uk

Nearby Accommodation

County Sligo, Ireland

Holistic Management Comprehensive 3, 6 or 9-Day Course, County Sligo, Ireland

This training is in collaboration with our partner, National Organic Training Skillnet (N.O.T.S.), which provides funding support for re-skilling in Ireland. During the first three days, our training venue will be The Coach House Hotel, and our Learning Hub, Rare Ruminaire, will provide a farm tour. The 6-Day Advanced Course will be held in N.O.T.S.' mobile training unit at Rare Ruminaire. (Please note we have a free day on Father's Day, the 18th of June 2023.)

3-Day Fundamentals Course & Learning Hub Farm Tour

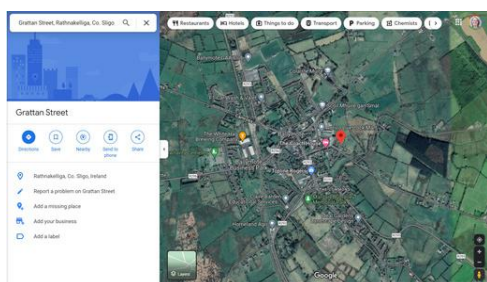
Course 1: Holistic Management Fundamentals
12th-14th of June 2023, 9:30 AM to 5 PM

6-Day Advanced Course

Course 2: Holistic Financial Planning
Course 3: Holistic Planned Grazing
Course 4: Holistic Ecological Monitoring & Land Planning
15th-21st of June 2023, 9:30 AM to 5 PM
(No class on the 18th of June)

9-Day Comprehensive Course

Holistic Management Courses 1, 2, 3, 4
12th-21st of June 2023, 9:30 AM to 5 PM



This Co Sligo farmer practices planned holistic grazing - but what is it?

Pricing & Registration for Irish Residents

Please contact N.O.T.S.

**IRISH RESIDENT
REGISTRATION**

Pricing for Non-Irish Residents

9-day £1,575 per person (no VAT)
Payable in monthly instalments.

**NON-IRISH RESIDENT
REGISTRATION**

The Coach House Hotel

S/N Grattan Street
Ballymote
Sligo
Republic of Ireland
Tel: +353 (0) 71 918 311
<https://coachhousesligo.com>

Northumberland, England

Holistic Management Comprehensive 12-Day Course, The Sill, Northumberland, UK

We are running the training as a cohort over four sessions from August 2023 through February 2024. A local farm tours are included featuring local regenerative farms.

Course 1, SKU626

Holistic Management Fundamentals
17th-19th of August 2023, 9:30 AM to 5 PM

Course 2, SKU627

Holistic Financial Planning
16th-18th of October 2023, 9:30 AM to 5 PM

Course 3, SKU628

Holistic Planned Grazing
4th-6th of December 2023, 9:30 AM to 5 PM

Course 4, SKU629

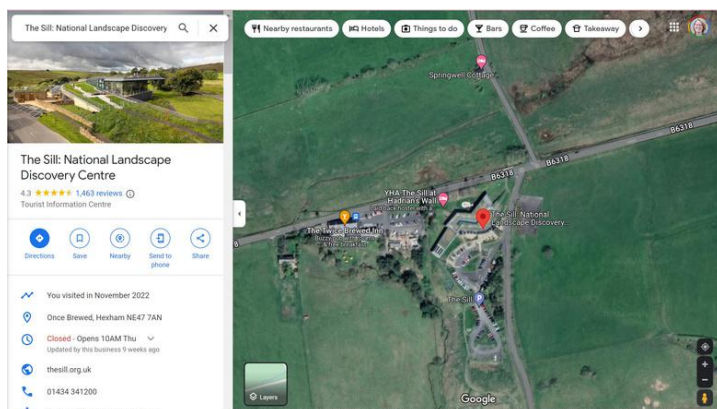
Holistic Ecological Monitoring & Land Planning
5th-7th of February 2024, 9:30 AM to 5 PM



Price

Comprehensive 12-day training package
includes lunches, coffee/tea breaks & materials
£1900 per person (no VAT)
Payable in monthly instalments.

[REGISTER](#)



The Sill

National Landscape Discovery Centre
Bardon Mill, Hexham
Northumberland, NE47 7AN
United Kingdom
Tel: +44 (0)1434 341200
<https://www.thesill.org.uk>

Nearby accommodation available at
YHA, or The Twice Brewed Inn

Isle of Lismore, Scotland

Holistic Management Comprehensive 9-Day Course, Isle of Lismore, Scotland, UK

This training is a life-changing experience, done in collaboration with our Learning Hub, The Sailean Project. They are truly ambassadors of holistic thinking and living.

Limited to 12 participants, you will experience a croft tour, home-cooked lunches and dinners from food grown on the croft.

The Sailean Project is our training venue. There is a wide variety of accommodation available on the island. Because the main industry is tourism, we recommend booking your accommodation early.

Courses 1-4, SKU575

Holistic Management Fundamentals

Holistic Financial Planning

Holistic Planned Grazing

Holistic Ecological Monitoring & Land Planning

4th-12th of October 2023, 9:30 AM to 5 PM



[Watch all Sailean Project videos on YouTube](#)

Price

Comprehensive 9-day training package includes homecooked lunches, dinners, coffee/tea breaks & materials
£1825 per person (no VAT)
Payable in monthly instalments.

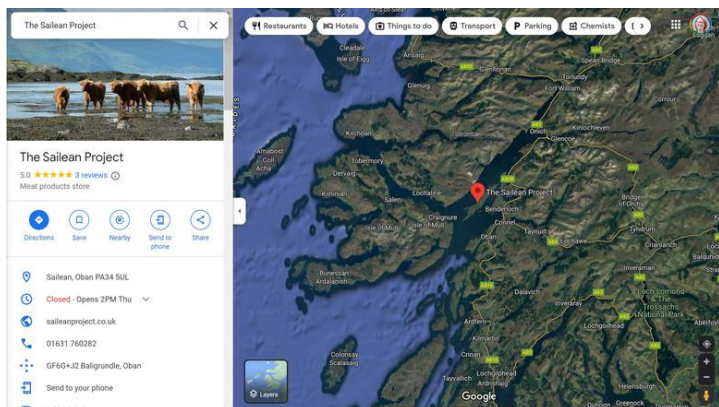
[REGISTER](#)

The Sailean Project

Sailean, Lismore
Oban, Argyll, Lismore
PA34 5UL
United Kingdom

Tel: +44 (0)1631760282
<https://saileanproject.co.uk/>

[Getting There & Accommodation](#)



50%
Discount

Somerset, England, 2023

Three places offered at 50% discount in Somerset

The Somerset Wildlife Trust and Mendip Hills AONB Service are offering three places on their Holistic Management training to the general public. These places are offered at a 50% discount, subsidised by the Farming in Protected Landscape Programme.

The price for 9 days of training, including lunches and materials, is £770. The usual price for this would be £1,425.

The training venue is Fernhill Farm, a regenerative farm and Learning Hub on the Mendip Hills.. The training is 9:30 am to 5:00 pm on the following dates:

- **Course 2:** Holistic Financial Planning, 26-28 January 2023
- **Course 3:** Holistic Planned Grazing, 23-25 February 2023
- **Course 4:** Holistic Ecological Monitoring & Land Planning, 22-24 March 2023

If you have already completed Course 1: Holistic Management Fundamentals, you can join right in.

If you have not taken Course 1, it's easy to do. Simply take the [Self Study Course through Savory Institute](#) The price is £336, and if you use this booking link, you will receive a 10% discount.



Watch webinar, [Demonstrating Achievable Change](#)

For questions about the training, please contact Sheila Cooke at 3LM:

- Tel: +44 (0)7446 780081
- info@3lm.network

To register, please contact Alix Zelly at the Somerset Wildlife Trust:

- Tel: +44 (0)7517 910090
- alix.zelly@somersetwildlife.org

To book accommodation, please contact Jen Hunter at Fernhill Farm:

- Tel: +44 (0)7903 584695
- mail@fernhill-farm.co.uk

[REGISTER](#)

[Fernhill Farm](#)

Cheddar Road
Compton Martin
Bristol, Somerset, BS40 6LD
United Kingdom

Somerset, England, 2024

Holistic Management Residency

9-Day Course, Fernhill Farm, Somerset, UK
With Full Room & Board Included

Offered in collaboration with our Learning Hub, Fernhill Farm, this will be a rich experience that includes residency on the farm. A local farm tour is included featuring pasture-reared cattle and sheep, and a reed-bed water system, and the Fernhill Fibre business.

Fernhill Farm was awarded Sheep Farmer of the Year in October 2022, and is Ecological Outcome Verified by 3LM.

Courses 1-4, SKU632

Holistic Management Fundamentals

Holistic Financial Planning

Holistic Planned Grazing

Holistic Ecological Monitoring & Land Planning

15th-23rd of January 2024, 9:30 AM to 5 PM

Fernhill Farm was featured on Farming Today, 28 December 2022



Watch webinar, Demonstrating Achievable Change

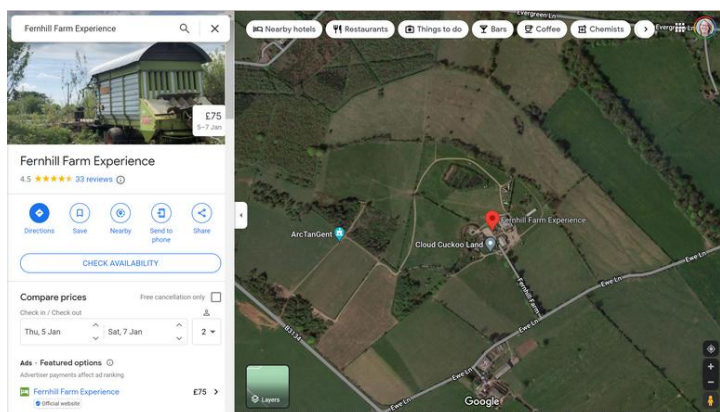
Price

Comprehensive 9-day training package includes 10 nights bunk bed (bring your own duvet & towels) breakfasts, lunches, dinners, coffee/tea breaks & materials

£2,300 per person (no VAT)
Payable in monthly instalments.

If you wish to upgrade to private or luxury accommodation, please contact Fernhill Farm directly:

- Tel: +44 7903 584695
- Email: mail@fernhill-farm.co.uk



REGISTER

Fernhill Farm

Cheddar Road
Compton Martin
Bristol, Somerset, BS40 6LD
United Kingdom

Bespoke & Self Study Courses



Self Study Holistic Management Fundamentals

This self-study programme is filled with videos featuring Allan Savory, and Byron Shelton, Senior Program Director at Savory Institute.

Get started when you want to, and go at your own pace. Once you complete the Self Study, you will be qualified to take the advanced level Holistic Management courses.

If you are interested in becoming an Accredited Professional with the Savory Institute, this is an excellent way to complete the educational requirements, because you need to take *Course 1* twice.

Purchase the, *Five Course Bundle*.

Bespoke Training

Benefits of bespoke training:

- Convenience -- no need to travel overnight.
- The whole team keeps pace together.
- Develop shared language and Holistic Context for land regeneration.

Book an appointment to discuss your needs.

[BOOK AN
APPOINTMENT](#)

Price of Self Study Course

Foundations of Holistic Management

Five-Course Bundle

£336 taxes included

Receive 10% discount by using the link below.

[SELF STUDY
5-COURSE BUNDLE](#)

Low Stress Livestock Handling -- Somerset

Low Stress Livestock Handling Training 1-Day Course

Learn to see the world the way a cow does, so you can be safe and stress-free in handling them.

Educator Miriam Parker was trained by the originators, Bud Williams and Temple Grandin, and was awarded an MBE for services in farming in 2006.

The course involves classroom sessions, as well as outdoor exercises with cattle. We limit the course to 12 participants so everyone gets a turn!

Learning Outcomes

- Natural cattle behaviour.
- Examine how to work with the animal's natural behaviour.
- Finding the flight zone.
- Keys to handling system design.

Price

Includes lunches, coffee/tea breaks & materials
£330 per person (including VAT)



Video regarding handling equipment principles.

Somerset, SKU630

13th of July 2023, 9:30 AM to 5:00 PM

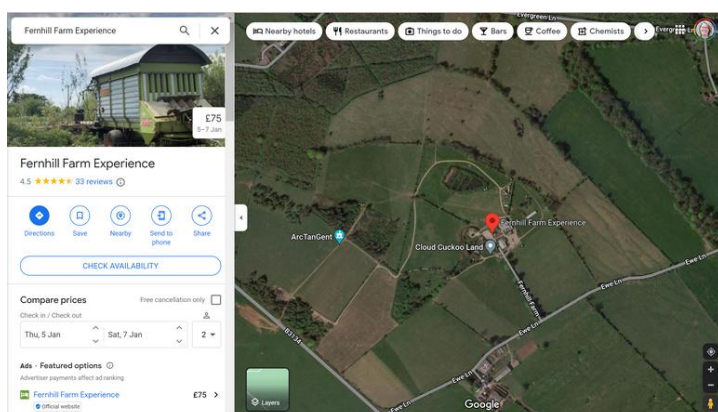
Fernhill Farm
Cheddar Road, Compton Martin, Bristol
Somerset, BS40 6LD United Kingdom

Contact Fernhill Farm directly regarding overnight accommodation:

- Tel: +44 7903 584695
- Email: mail@fernhill-farm.co.uk

REGISTER

FOR SOMERSET



Low Stress Livestock Handling – Shropshire

Low Stress Livestock Handling Training 1-Day Course

Learn to see the world the way a cow does, so you can be safe and stress-free in handling them.

Educator Miriam Parker was trained by the originators, Bud Williams and Temple Grandin, and was awarded an MBE for services in farming in 2006.

The course involves classroom sessions, as well as outdoor exercises with cattle. We limit the course to 12 participants so everyone gets a turn!

Learning Outcomes

- Natural cattle behaviour.
- Examine how to work with the animal's natural behaviour.
- Finding the flight zone.
- Keys to handling system design.

Price

Includes lunches, coffee/tea breaks & materials
£330 per person (including VAT)



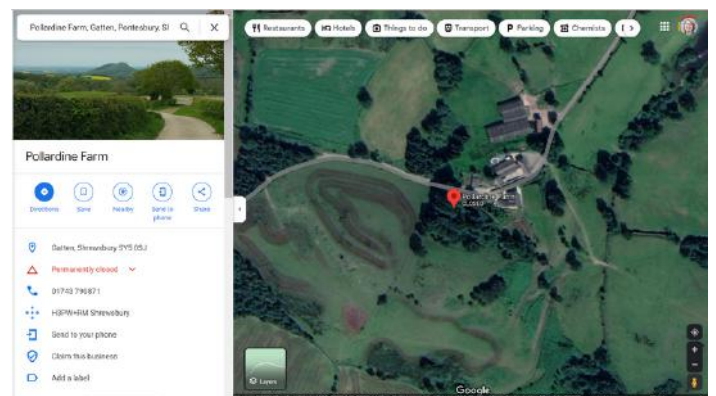
Video regarding low stress livestock handling.

Shropshire, SKU631

25th of October 2023, 9:30 AM to 5 PM

Pollardine Farm
Gatten, Pontesbury
Shropshire SY5 0SJ United Kingdom

**REGISTER
FOR SHROPSHIRE**





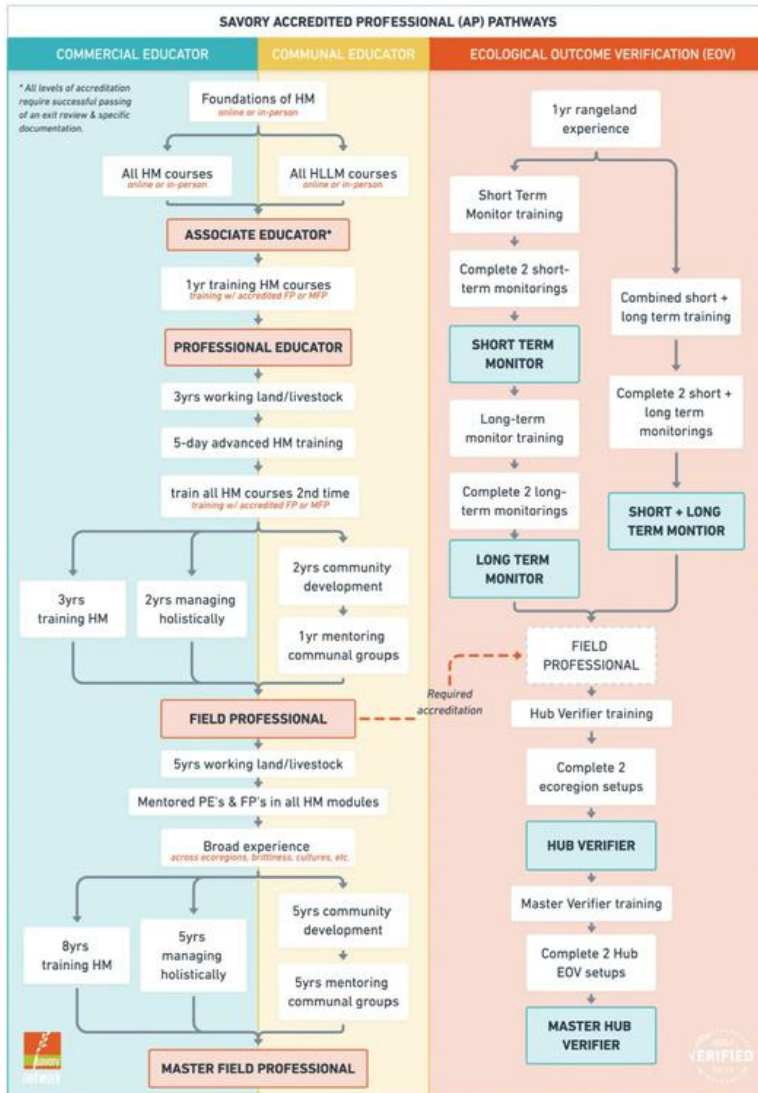
Support Programmes

Super course. So are the tutors. For me it's what I didn't expect to learn is the added value. The people you meet and their perspectives along with the learning all gear you up to put your plans into context and practice.

-- *Harry*



Accreditation by Savory Institute



What is a Savory Network Accredited Professional?

3LM are expanding capacity for land regeneration by developing a network of Accredited Professionals with a portfolio lifestyle consisting of Ecological Outcome Verification during the growing season, and Holistic Management education during the non-growing season.

Accredited Professionals (AP's):

- Receive annual continuing education from Savory Institute
- Join a global support system
- Contribute to the Holistic Management body of knowledge

In addition to teaching Holistic Management, AP's may also become Monitors and Verifiers that implement Ecological Outcome Verification (EOV) on landbases in their ecoregion, allowing producers to measure the outcomes on their land.

Three Accreditation Pathways

1. Commercial Educator
2. Communal Educator
3. Ecological Outcome Verification (EOV)

ENABLE FARMERS TO
REGENERATE SOILS

[FIND OUT MORE](#)
[BOOK AN APPOINTMENT](#)

Becoming Accredited



How to Become an Accredited Professional

1. Complete *all* Holistic Management Training. To consolidate your learning, you are required to take Holistic Management Fundamentals twice. We recommend the [Self Study](#) as your second go at it.
2. After completing the coursework, the best form of revision is practise. Work with a farmer to do all the planning procedures, holistic decision-making, and ecological monitoring.
3. Pay for your Exit Review (£168) using this [link](#).
4. Book an Exit Review with Savory Institute using this [link](#).
5. Receive your accredited certificate and pay annual fees to maintain accreditation. The fees cover continuing education courses for AP's, new course materials, training resource libraries and access to Savory Global Network collaboration forum.

[FIND OUT MORE](#)
[BOOK AN APPOINTMENT](#)

Ecological Outcome Verification



What is Ecological Outcome Verification?

Ecological Outcome Verification (EOV) gives the land a voice of its own, through empirical and tangible outcomes, which in turn provide the farmer with ongoing feedback from which to make better management decisions. EOV is a global programme of the Savory Institute that has been contextualised for the ecoregions of the UK and Ireland by 3LM.



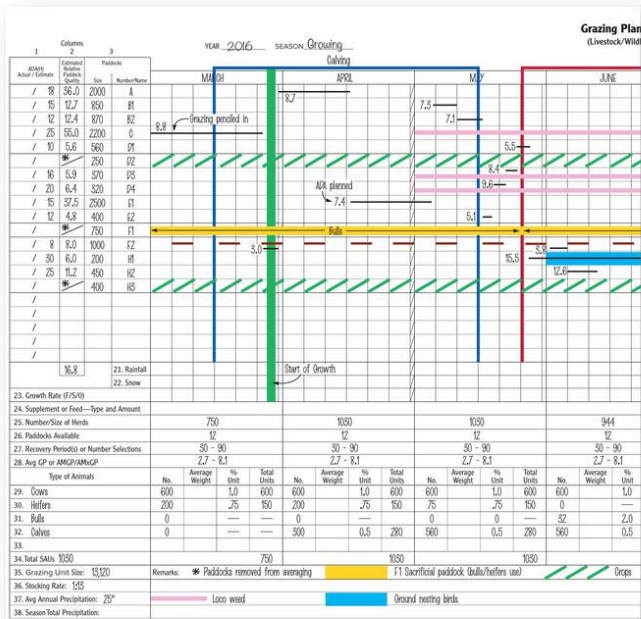
Ecological Outcome Verification (EOV) is the “science inside” Savory Institute’s Land to Market programme. Land to Market (L2M) is a sourcing solution that connects conscientious buyers, brands and retailers directly to farms and ranches that are verified to be regenerating their land. EOV is the empirically-based protocol used to verify farms and ranches to be eligible to participate in the L2M programme.



Farms demonstrating positively trending outcomes in land regeneration through EOV are eligible to be entered into a “Verified Regenerative Supplier Roster”, from which participating buyers, brands, retailers and end consumers can access products or services that have been produced on a verified regenerative land base.

[FIND OUT MORE](#)
[BOOK AN APPOINTMENT](#)

Forms: Grazing & Finance



ANNUAL INCOME AND EXPENSE PLAN												
Year												
Plan												
- Actual												
= Difference												
Cumulative Difference to Date												
Plan												
- Actual												
= Difference												
Cumulative Difference to Date												
Plan												
- Actual												
= Difference												
Cumulative Difference to Date												
Plan												
- Actual												
= Difference												
Cumulative Difference to Date												
Plan												
- Actual												
= Difference												
Cumulative Difference to Date												
Plan												
- Actual												
= Difference												
Cumulative Difference to Date												
Plan												
- Actual												
= Difference												
Cumulative Difference to Date												

Grazing Plan & Control Charts

Savory Institute Grazing & Control Charts can be used for Open or Closed Season Holistic Planned Grazing. Shipping included to the UK or Ireland. For other destinations please contact info@3LM.network prior to placing your order.

Price -- Grazing

Set of 5 Charts
Size A1, folded to size A4
Includes delivery to the UK & Ireland

£25 (excluding VAT)

ORDER
GRAZING CHARTS

Annual Income & Expense Plan

Savory Institute Annual Income & Expense Plan charts can be used for Holistic Financial Planning. Shipping included to the UK or Ireland. For other destinations please contact info@3LM.network prior to placing your order.

Price -- Finance

Set of 5 Charts
Size A1, folded to size A4
Includes delivery to the UK & Ireland

£25 (excluding VAT)

ORDER
FINANCE CHARTS

Funding



Irish Residents

Irish residents qualify for funding from National Organic Training Skillnet (N.O.T.S.). They provide subsidies for Holistic Management training and Ecological Outcome Verification.

See a programme in this catalogue that you would like? Please contact N.O.T.S. directly.

National Organic Training Skillnet (N.O.T.S.)

info@nots.ie
<https://nots.ie/>
Tel: 071 96 40688

Payment Plans Available

3LM offer monthly payment plans, interest-free, when purchasing £450 or more.

Click REGISTER for the product you want, then tick, "Payment Plan."

Have questions?
Email: info@3lm.network
Tel: +44 (0)7446 780081



FarmED

FarmED sometimes has bursaries available. They also provide a 10% discount to Pasture for Life members. Please contact them directly for details.

FarmED

sophie@farm-ed.co.uk
<https://www.farm-ed.co.uk/>
Tel: 01993 402403

Price

Online Mentoring
£66 / hour including VAT

Mentoring



MENTORING WITH
SHEILA COOKE

Sheila Cooke, MBA, BA **Accredited Field Professional** **EOV Hub Verifier**

- Co-founder of 3LM, hub leader
- Accredited facilitator, and trainer of Technology of Participation, ICA-USA
- 20+ years experience supporting business growth
- Pioneer in the field of virtual facilitation, working to develop this capacity within FAO
- Degrees in sociology/anthropology, and international business
- Specialities: facilitating a shared Holistic Context, Holistic Financial Planning, Holistic Planned Grazing



MENTORING WITH
CHRISTOPHER COOKE

Christopher Cooke, MSC, BA, FRSA **Accredited Field Professional** **EOV Hub Verifier**

- Co-founder of 3LM, hub leader
- 20+ years experience training, coaching, and advising people in the adoption of holistic thinking
- Extensive leadership and advisory experience related to biological agriculture in the UK and Australia
- Advanced qualifications in managing change, engineering, environmental monitoring and control, and the psychology of change
- Specialities: Holistic Management Fundamentals, Ecological Outcome Verification

Webinars & Workshops



3LM Newsletter

Subscribe to the 3LM newsletter to find out about webinars and workshops, as well as to read interesting articles about Holistic Management. Receive, *Savory Institute Ebook 1, The Foundations of Holistic Management*, when you subscribe. Recent articles:

- [Forest Grazing](#) (Hungary)
- [Pasturing Poultry](#) (Scotland)
- [A holistic entrepreneur](#) (Ireland)
- [Lowering risk by managing holistically](#) (England)
- [Successful transition to Holistic Management](#) (England)
- [Managing Horses Holistically](#) (England)
- [Moving a flerd long distance](#) (England)
- [Does it pay to 'graze tall' and trample grass?](#) (Germany)
- [Manage for an Effective Water Cycle](#) (Scotland)
- [Green Oasis](#) (Germany)



**SUBSCRIBE TO
3LM NEWSLETTER**

Contact Us



3LM -- Land and Livestock Management for Life

Tel: +44 (0)7446 780081

Email: info@3LM.network

Website: www.3LM.network

[SUBSCRIBE TO
3LM NEWSLETTER](#)

[FIND OUT MORE
BOOK AN APPOINTMENT](#)