

SUSQ CO

★ 2026 ★

visitors guide



#VisitSusqCo
**SUSQUEHANNA
COUNTY**
PROMOTION & TOURISM AGENCY

find your way
visitsusqco.com  

2026 *visitors guide*



p **4** Heritage Trail

p **22** Growing SusqCo

p **6** Getting Here

p **26** Breweries & Wineries

p **8** History & Heritage

p **32** Lodging

p **14** Outdoor Adventures

p **38** 2026 Events

p **18** Arts & Culture

ABOUT THE COVER

Civil War Re-enactors at Old Mill Village, a living history museum with special weekend events happening May - October.
PHOTO BY #VISITSUSQCO

CONTACT US

Staci Wilson,
Executive Director

PO Box 218 • 31 Lake Avenue
Montrose, PA 18801

570.278.6614 (office)
570.767.4151 (cell)

tourism@visitsusqco.com
VisitSusqCo.com

Susquehanna County, PA

THE CRADLE OF AMERICAN CHARACTER

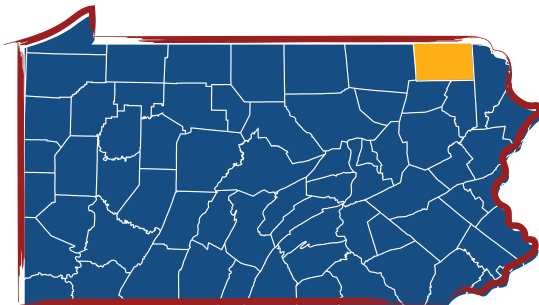
As America marks its 250th anniversary, Susquehanna County invites you to explore the spirit that helped shape a young nation. Beyond the Revolution, this was a frontier of progress where the American promise was tested and proven.

At the Dennis Farm, settled in 1793 by Prince Perkins, a free Black man and Revolutionary War veteran, visitors can experience a rare and enduring testament to African-American land ownership and perseverance. That same trailblazing spirit is reflected in Jonathan Jasper Wright, the first African American admitted to the bar in Susquehanna County and a pioneer in American law and justice.

Innovation runs deep here. The iconic Starrucca Viaduct, completed in 1848 and once hailed as the "Eighth Wonder of the World," stands as a marvel of engineering that helped power the industrial age.

Susquehanna County also holds deep spiritual significance at the Priesthood Restoration Site, a landmark in religious history that draws visitors from around the world. And through the legacy of Galusha Grow, the "Father of the Homestead Act," the county's influence reached far beyond Pennsylvania, helping expand opportunity across the nation.

More than rolling hills and bluestone vistas, Susquehanna County is a place where American character was forged. Come discover the stories, sites, and landscapes that prove the American experiment thrives at the top of the Endless Mountains.



Find the most current information and events at visitsusqco.com



susquehanna county **HERITAGE TRAIL** **OCTOBER 3-4, 2026** **10AM-4PM**

The self-guided and scenic Heritage Trail offers the perfect way to explore Susquehanna County's rich history in a weekend.

Step back in time and breathe in the fresh air on the Susquehanna County Heritage Trail! This scenic journey is a vibrant celebration of our local roots, winding through the rolling hills and charming historic towns of Northeast Pennsylvania. History comes alive at every turn, from the Dennis Farm, the oldest African American-owned farm in the U.S., to the engineering marvel of the Martins Creek Viaduct. Whether you're exploring the nostalgic Old Mill Village, visiting a meticulously restored

one-room schoolhouse in Clifford, or wandering the halls of the Susquehanna County Historical Society, the trail offers a perfect blend of education and recreation. It's more than just a path; it's a living tribute to the resilient spirit and natural beauty of our community—**so grab your walking shoes and come discover the stories etched into every mile!**

Check visitsusqco.com and individual sites for special events, tour times, admission and hours.





**Giving Animals
a Safe Refuge
& Hope for a
Second
Chance**
570.278.1228



Follow Us On Facebook for 2026 Event Info!

WOLF STOCK
15th Anniversary
Celebration

Peace, Love & Drool

Old Red's Revival
Dancing Drinks Dinner



SHELTERING HOMELESS ANIMALS
Our committed purpose is to bring together a united community to protect the lives of our homeless animals.



ADOPTION SERVICES
View our current Friends and find the next addition to your family!



DONATIONS
Help us continue to provide the best care for our animals!



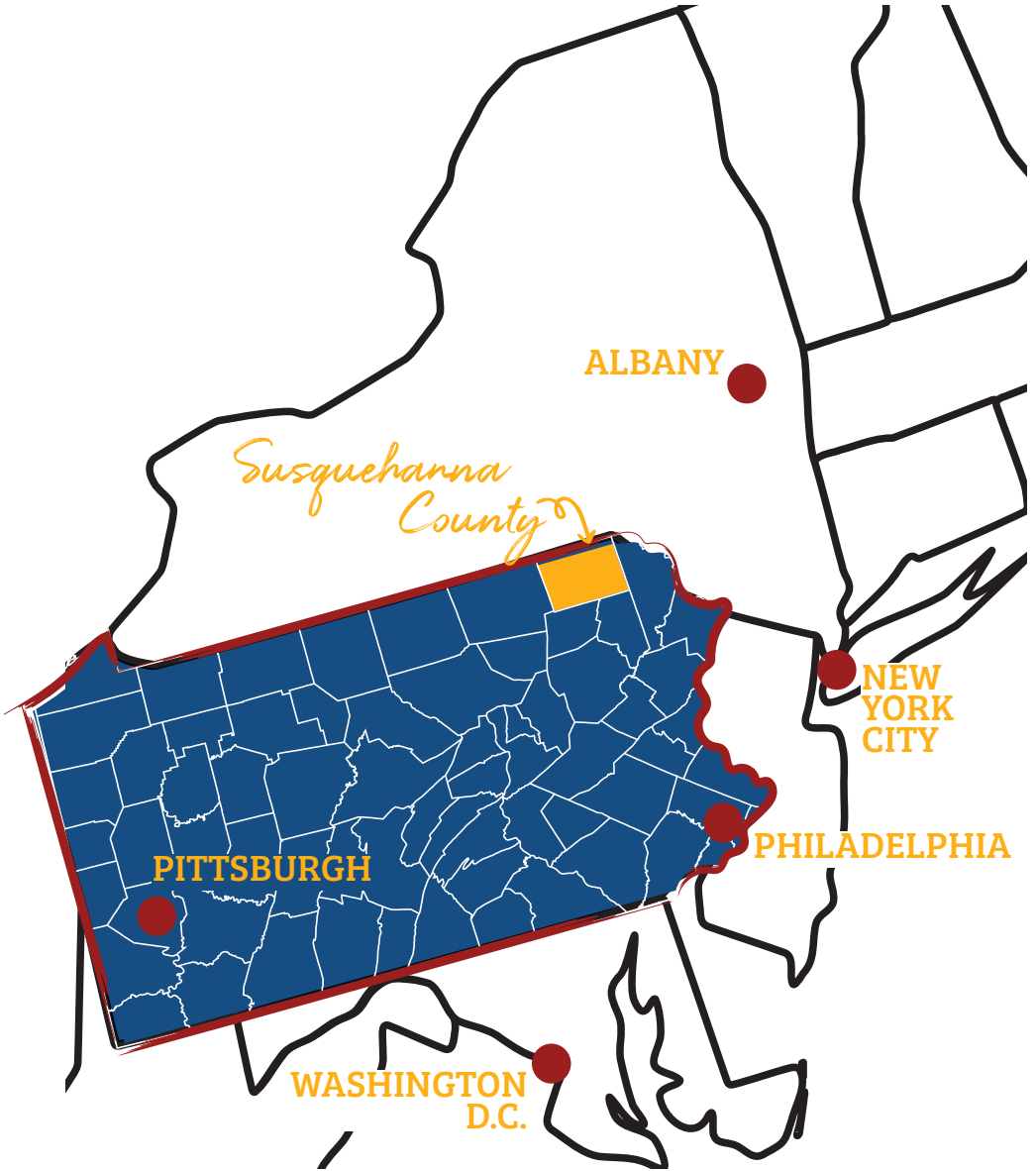
FIND OUT MORE!

16332 SR 706, Montrose, PA 18801 truefriendsawc.com

find your way visitsusqco.com

GETTING HERE

The Road to Susquehanna Co.



County

Tucked into Pennsylvania's Endless Mountains, Susquehanna County feels a world away — yet it's an easy and scenic drive from many major cities. However you travel, the journey here is part of the experience: rolling hills, open farmland, and small-town charm waiting at the end of the road.

FROM NEW YORK CITY

Approx. 2.5–3 hours

Head west via I-80 or take I-87 north to connect with I-84 west into Pennsylvania. From there, follow local routes north into Susquehanna County. It's a straight-forward drive that quickly trades skyline views for mountain vistas.

FROM NEW JERSEY

Approx. 2–3 hours (depending on starting point)

Northern and central New Jersey travelers can follow I-80 west into Pennsylvania, then head north. The closer you get, the quieter it becomes — traffic fades and country roads begin.

FROM SOUTHEAST PENNSYLVANIA (PHILADELPHIA REGION)

Approx. 2.5–3 hours

Take I-476 (Northeast Extension of the PA Turnpike) north, then connect to I-81 north. From there, state routes guide you directly into the heart of the county.

FROM CENTRAL & WESTERN PENNSYLVANIA

Approx. 2–4 hours

Travelers from areas like State College, Harrisburg, or Pittsburgh can take I-80 or I-81 depending on your starting point, then follow connecting highways north and east into the Endless Mountains region.

FROM WASHINGTON, DC

Approx. 4–4.5 hours

Take I-270 north to I-81 north through Maryland and into Pennsylvania. The drive is scenic and steady, bringing you straight into northeastern PA.

FROM UPSTATE NEW YORK & ALBANY

Approx. 1.5–3 hours

Travel south via I-88 or I-81 depending on your location. From Albany, the trip is typically around two hours — an easy getaway into peaceful countryside.

No matter your starting point, Susquehanna County is close enough for a spontaneous weekend and far enough to truly feel like an escape. Pack the car, cue up your favorite playlist, and come see where the road leads.

HISTORY

and heritage

HISTORICAL SITES

STARRUCCA VIADUCT

Lanesboro

The Starrucca Viaduct was constructed in 1848 by the New York and Erie Railroads using local Pennsylvania Bluestone. This stone arch bridge columns rise 110-feet above the Starrucca Creek and its 17 arches are each 50 feet. The bridge has been used continually for over 175 years. The viaduct was designated as a National Historic Civil Engineering Landmark in 1973 and listed on the National Register of Historic Places in 1975. Nearby Luciana Park offers a spectacular view of the viaduct, and access to the D&H Rail Trail.

MARTIN'S CREEK VIADUCT

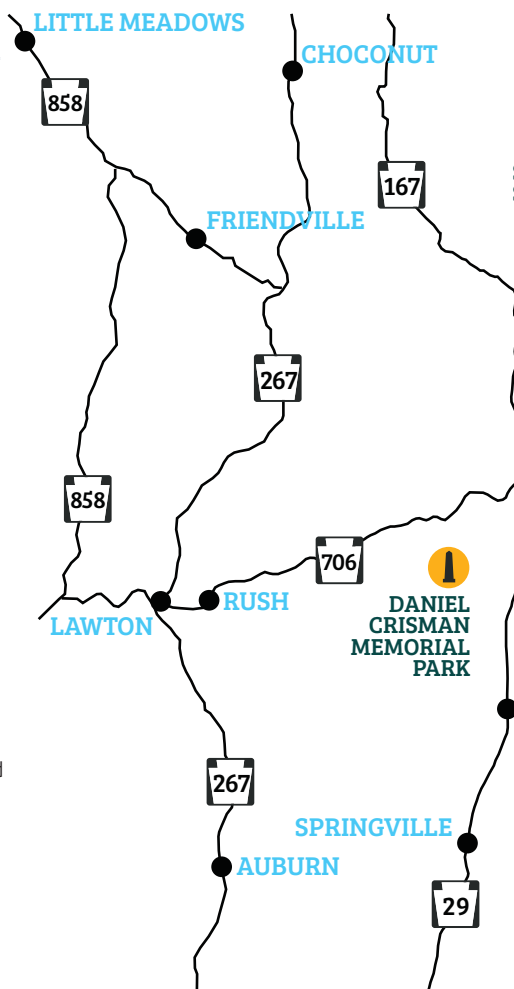
Kingsley

This concrete railroad bridge is considered an engineering triumph constructed 1912-14 for the Delaware, Lackawanna and Western Railroad Company. The Viaduct crosses over US-11. It pre-dates its sibling, the larger Tunkhannock Viaduct, which can also be viewed along US-11. The Martin's Creek Viaduct stands 150-feet tall with seven main arches. The Martin's Creek Viaduct Scenic Overlook on Zick's Hill Road, Kingsley, provides a panoramic view of the structure and is managed by the Brooklyn Historical Society.

SUSQUEHANNA COUNTY COURTHOUSE COMPLEX

Lake Ave., Montrose, PA

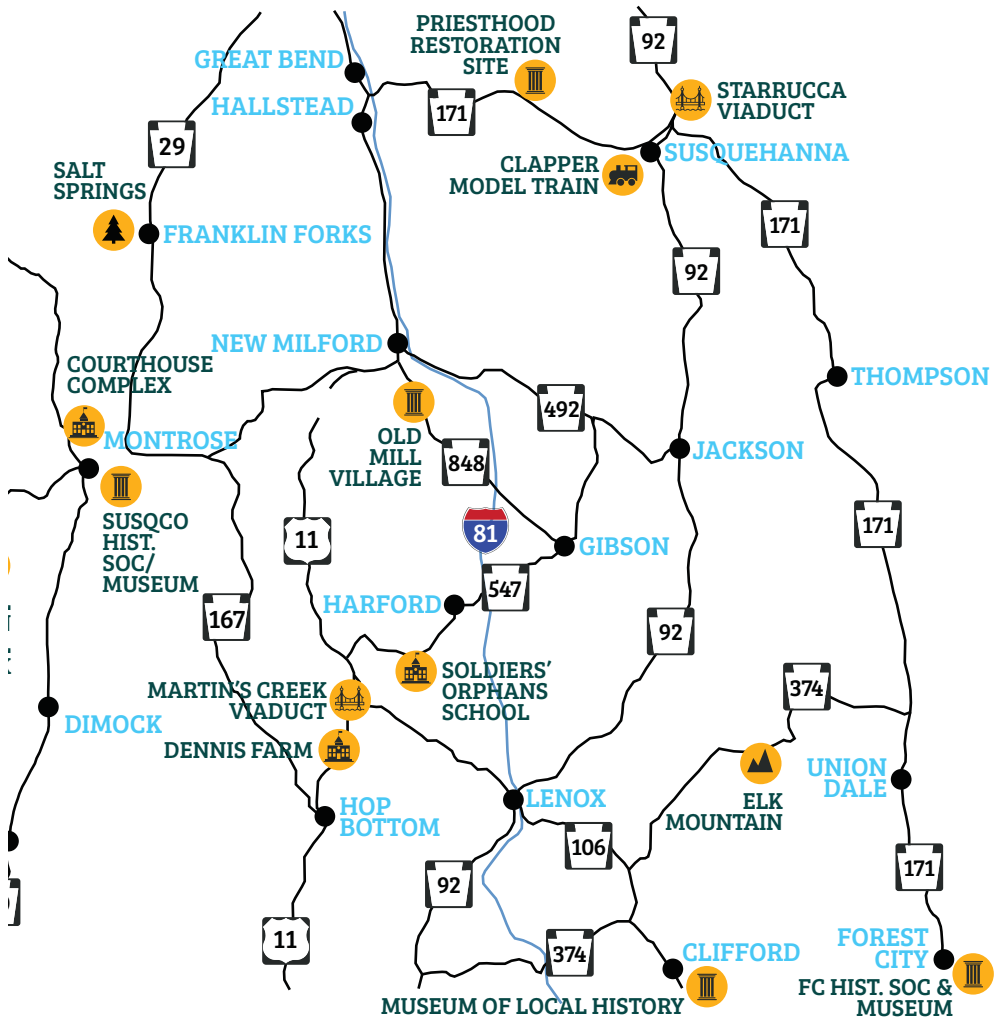
Comprised of the Greek Revival style Susquehanna County Courthouse buildings, as well as the 1867-68 Jail, and Town Green. Also included is an 1887 American Civil War Memorial; Galusha A. Grow Monument; and early surveyor's marker; and a 1930s Veterans' Memorial.



HISTORICAL SOCIETIES & RESEARCH RESOURCES

SUSQUEHANNA COUNTY HISTORICAL SOCIETY

18 Monument Square, Montrose
570.278.1622
susqcohistosoc.org



BROOKLYN HISTORICAL SOCIETY

PO Box 58, Brooklyn
 570.498.6637
brooklynpahistoricalsociety.net/home.html

FOREST CITY AREA HISTORICAL SOCIETY

636 Main St., Forest City
forestcityareahistoricalsociety.org

CLIFFORD TOWNSHIP HISTORICAL SOCIETY

PO Box 161, Clifford,
cliffordtownshiphistoricalsociety.org

HARFORD HISTORICAL SOCIETY

Orphan School Rd., Kingsley
 570.434.2681

HISTORY *and heritage*

MUSEUMS & ATTRACTIONS

SUSQUEHANNA COUNTY HISTORICAL SOCIETY & MUSEUM

18 Monument Square, Montrose
570.278.1622 • susqcohistoc.org

Reservations recommended for museum tours, free.

The museum is free to the public. Items of note include spinning wheels built by the Crandall Toy Factory, paintings by Susan C. Moore Waters (1823-1900), exhibits that feature the county's economic past, the United States military, including a phenomenal Civil War collection. The Historical Society also houses a Genealogy and Research Department.

THE FOREST CITY AREA HISTORICAL SOCIETY & MUSEUM

forestcityareahistoricalociety.org

Housed in a former Methodist Church, the museum showcases the immigrant history that settled in the area in the early 1900s to work in the Anthracite Coal industry. The FCAHS also hosts special performances and events throughout the year.

OLD MILL VILLAGE MUSEUM

5774 PA-848, New Milford
oldmillvillage.org

Living history museum with special events and themed weekend activities during the spring, summer and autumn months that highlight different aspects of local, state and national rural history and heritage.

CLIFFORD HISTORICAL SOCIETY & MUSEUM

119 Cemetery St., Clifford
cliffordtownshiphistoricalsociety.org

There are guided tours of venues on the third Sunday of each month, May through October. The Historic Baptist Church, 1817; Museum of Local History; one-room schoolhouse the



Hoover School; Yarns Cider Mill. The Children's Garden, where kids can safely explore, located next to the Clifford Community Park.

DANIEL CRISMAN MEMORIAL PARK Ridge Rd., South Montrose

Five acre park honoring those who lost their lives in the attacks on 9-11 with various memorials and markers. A community remembrance event is held annually on September 11.



SALT SPRINGS STATE PARK WHEATON HOUSE

2305 Salt Springs Rd., Montrose
friendsofsaltspringspark.org

The 1830s Wheaton House serves as the Welcome Center for the Friends of Salt Springs Park. Displays feature 19th century rural life and regional wildlife.

CENTER FOR ANTI-SLAVERY STUDIES

395 Church Street, Montrose

The Center for Anti-Slavery Studies (CASS) is dedicated to historic research, preservation, and public programming. CASS is focused on the period of 1800 to 1900, specifically the activities surrounding the Anti-Slavery Movement as it transpired in Pennsylvania's Northeast.

HISTORY *and heritage*

MUSEUMS & ATTRACTIONS

THE HISTORIC DENNIS FARM

Creek Rd., Kingsley
thedennisfarm.org

The Dennis Farm highlights the story of a Free African American family in the Northeast United States, from the American Revolution through the 21st century. At the center of the family's story is the 200+ year-old, 153-acre Dennis Farm. The Dennis Family Farm is the oldest African American owned farm in the country. The Perkins-Dennis Cemetery on the Farm's hilltop is the final resting place of documented African American veterans of the American Revolutionary War, the War of 1812 and the Civil War. Site of the first Pennsylvania Semiquincentennial Bell in celebration of America's 250th birthday in 2026. Artifacts from The Dennis Farm are on display at the Smithsonian National Museum of African American History and Culture, Washington, D.C., and the Museum of the American Revolution, Philadelphia, PA. The Dennis Farm is Listed on the National Register of Historic Places. Plans are underway to renovate the 1800s farmhouse into a museum, research and visitors center.

RUSSELL CLAPPER MODEL TRAIN DISPLAY

132 Exchange St., Susquehanna

Russell Clapper worked in the roundhouse of the Erie Railroad. He used salvaged pieces of wood from the railroad to build 150 scaled miniature railroad cars. The No. 2602 locomotive in the display is a replica of one of three built in 1907 by the Erie Railroad which were the largest steam locomotives in the world.

SOLDIERS' ORPHANS SCHOOL

2238 Orphan School Rd., Kingsley

The Soldiers' Orphans School accommodated children of deceased or disabled Civil War veterans, operating between 1865 and 1902. Prior to 1865 the still-existing timber-frame buildings were part of Franklin Academy, which became Harford University in 1850. The Harford Historical Society operates from this location. A used book sale, artifacts and exhibits, as well as a diorama of the Orphans School are on exhibit and open to the public one Saturday a month, May through October.



UNITED FIRE COMPANY FIREFIGHTERS' MUSEUM

Monument Square, Montrose

Unique collection of fire fighting apparatus and history of the fire company.



RICHMOND HILL SCHOOL

1340 Wilkes Barre Turnpike, Montrose

Richmond Hill School, aka Silver Lake Schoolhouse #1, was placed on National Register of Historic Places in 2024 due to its significance in early Pennsylvania Public Education and how it was used as an incentive in recruiting Irish Immigrants. The school was established under the Common School Act of 1934, of which Susquehanna Co. was an early proponent of at a time when many counties were against publicly funded schools.



AMERICAN LEGION POST 354

New York Ave., Hallstead

Carefully curated military memorabilia from World War 1 through the present, and representing all branches of the US Military. Learn America's history from the veterans who made it.



PRIESTHOOD RESTORATION SITE

27832 SR 171, Susquehanna

570.335.9580 • churchofjesuschrist.org

Location where Church of Jesus Christ of Latter-Day Saints founder Joseph Smith resided with his wife, Emma (Hale) Smith in 1828-29. The LDS Church recognizes the site as the place where Joseph Smith translated most of the Book of Mormon. The visitors' center features a film, artifacts and interactive exhibits. Guided tours are available of the reconstructed homes or take a self-guided tour of the additional areas.





OUTDOOR

adventures

ADVENTURE

ELK MOUNTAIN SKI RESORT

344 Elk Mountain Rd., Union Dale
elkskier.com

180 Acres. 27 Trails. Named “Best Overall Mountain” in the Mid-Atlantic Region—Elk Mountain Ski Resort utilizes advanced snowmaking techniques that extends the season on the slopes with perfect powder. Elk Mountain introduced its tree nursery program in the 1970s and is committed to maintaining the natural terrain of the region. Check the website for hours, up-to-date ski conditions, lift tickets, packages and passes. From Green Circle to Black Diamond, skip the crowds in the Poconos and Vermont and experience the Elk Mountain difference.

EMR EVENT PARK

577 Wolfs Lair Rd., New Milford
emreventpark.com

122 acres of varied terrain with 20 playing fields is home to the famous Castle Aarrgh, Castle War and Tippmann Town. The facility has a two-story Rec Center with full service store, picnic pavilion complete with sink, tables, chairs, and gas grill. Overnight accommodations in the 35 bunkhouses or 96 campsites. Check the website for paintball, airsoft, magfed paintball and LARP events happening from May through November.

GOLF

TALL PINES PLAYERS CLUB

628 Kinney Rd., Friendsville
570.553.GOLF (4653)
tallpinesplayersclubllc.com

Tall Pines Players Club offers spectacular golf and dining near the New York - Pennsylvania border. The 18-hole golf course boasts well-maintained fairways and greens, welcoming golfers at every skill level. Make Tall Pines a regular destination for a round of golf or a great meal with family and friends.



ROCK CREEK GOLF COURSE

2738 State Route 374, Nicholson
570.222.2500
Facebook: Rock Creek
Golf Course

Course is a short drive off I-81, exit 206 with 18 holes and a driving range.



PANORAMA GOLF COURSE

1124 SR 2023, Clifford Township
570.222.3525
panoramagolfcourse.com

18-hole, classic 1960s era design with a blend of length, skill and strategy. The course was built on farmland, allowing turfgrass to thrive and provide stellar playing conditions.



ARCHERY

OUTDOOR INSIDERS

310 Outdoor Dr., New Milford
outdoorinsiders.com

Northeast Pennsylvania's premier outdoor gear and archery center complete with three on-site archery ranges—the Indoor 3D Archery Range, 20-Yard Paper Range, and the on-site Outdoor Course. Range membership packages are available.



OUTDOOR *adventures*

TRAILS

SALT SPRINGS STATE PARK

Silver Creek Rd., Franklin Forks

friendsofsaltspringspark.org

Facebook: Friends of Salt Springs Park

Climb waterfalls, explore an old growth hemlock forest, make a wish at “Penny Rock,” pitch a tent under the stars, and catch a environmental or historical program at Salt Springs Park. About half of the 842-acres is a state park—the only state park in the Commonwealth managed by a non-profit organization. The remaining lands are owned by the Friends of Salt Springs Park with the public invited to enjoy the streams and woodlands, historic building, cottages and picnic grounds. There are nearly 15 miles of hiking trails. The Overlook Trail is ADA accessible, winding through the forest and connecting to the Hemlock Trail near the waterfalls observation platform. The park’s namesake—a bubbling salt spring—is located at the base of the gorge. Public programs are held at the park throughout the year. Check the Friends of Salt Springs Park website for the most up-to-date list of guided hikes, workshops and events.

WOODBOURNE PRESERVE

SR 29, Dimock

elrose.org

The Woodbourne Forest and Wildlife Preserve has been acquired by the local Edward L. Rose Land Conservancy. The Preserve is a 630-acre property, open to the public, with a well-marked parking area and includes old growth forest, transitional fields, a large pond and a beautiful wetland with a viewing platform for birders. With its diverse environment and over six miles of maintained trails, it is a hiker’s and naturalist’s delight. The Nature Conservancy, a national land trust, became the owner of the Woodbourne Preserve in 1956 when it was donated by the Cope family with the stipulation that it be maintained as a preserve in perpetuity. It was the first property acquired by The Nature Conservancy in Pennsylvania. The preserve continues to be managed with help from a

committed volunteer stewardship committee that has been involved in the operations of the preserve since its inception. The dedicated committee of local citizens assists in maintaining the Preserve and its trails, and implementing environmental education programs for local schools, scout troops, surrounding community groups and other visitors.

FLORENCE SHELLY PRESERVE

SR 171, Thompson

nature.org

Immerse yourself in a biodiverse habitat and lush natural beauty of the 380-acre Florence Shelly Wetlands Preserve. Fabulous opportunities for birding in the fields and woodlands, including a glacial pond surrounded by a floating bog. A boardwalk begins near the parking lot, winds through the hemlock forest with the hike paying off at the marsh overlook. Guide sheets for the trail are available at the trailhead just off Stack Road. Dogs are not allowed at the preserve.

ENDLESS MOUNTAINS HERITAGE REGION

602 Main St., Ste. 7, Towanda

emheritage.org

The Endless Mountains Heritage Region is comprised of four counties—Susquehanna, Bradford, Sullivan and Wyoming. EMHR serves as the water trail manager for the upper North Branch Susquehanna River Water Trail—the 2023 Pennsylvania River of the Year—and hosts kayaking sojourns on the river. Join in the fun for the Dam Removal Celebration Paddle planned for June in Susquehanna Depot. EMHR has two overnight hikes planned this season—one at Salt Springs State Park and the other on the D&H Rail Trail. The Endless Mountains Gravel Bikepacking Loop winds its way over 400 miles through four counties—including SusqCo! Join the loop at any point and plot your route with the map available at emheritage.org. The Endless Mountains 430/250 Challenges are a multi-day, self-supported race along the EMGBL.



**Quality Equipment
Competitive Pricing
Exceptional Service**

Serving Susquehanna, northern Wayne & southern Broome Counties



Party & Event Rentals

Formal Wear

Balloons & Decor

Tent, Table & Chair Packages Available for Any Size Event!

creekroadrentals.com

570-727-2408

info@creekroadrentals.com



**Friends of
Salt Springs Park**
invite you to

- 🌲 Camping & Hiking
- 🌲 15 Miles of Trails
- 🌲 Picnic Areas
- 🌲 24/7 Access
- 🌲 Pavilion Rentals
- 🌲 Special Events

**Programs for the
Whole Family**

**Guided Trail Hikes,
Cider & Candle Making,
Pickling, and More!**

**come to your senses, this
winter, spring, summer, and fall**



2305 Salt Springs Road, Montrose, PA 18801

Scan to
Visit Our
Website



Funded in part by the Susquehanna

www.friendsofsaltspingspark.org

County Room Tax Fund through the Susquehanna County Promotion and Tourism Agency

ARTS *and culture*



In Susquehanna County, art rises from the land itself —

from stone walls that wander like old scars, from barns that lean into the wind with quiet defiance, from hills that breathe stories into anyone willing to listen. But its real heartbeat is the community. Music and theater ring through school gyms and community halls, carrying the same raw honesty as the fields outside. Maurice Taylor's Easy Steps to the Band, born in Montrose and taught across the nation, began with local kids learning their first brave notes together. Jazz musician and artist Joe Welden carried that spirit forward, turning everyday life into melody and color. And across the county, fiber artists, painters, and photographers continue to shape beauty from the textures of daily life. Here, creativity is a shared inheritance — a living thread binding makers of every kind to the county's wild, unpolished grace.

SLANTED ART COOPERATIVE GALLERY

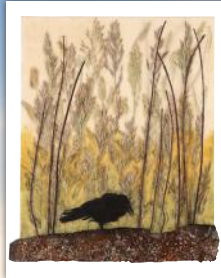
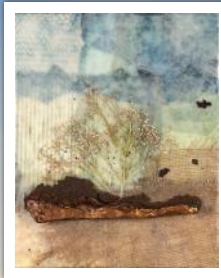
158 Church St., Montrose, PA
slantedartcooperative.square.site

Slanted Art is more than a cooperative gallery - it's a community striving to inspire creativity and celebrate artistic talent in many forms. Over 60 visual and literary artists from Pennsylvania, New York and a few other states display their work with Slanted Art. Workshops, classes and events offered.

PINK ARROW ARTS

35 Pine St., Montrose, PA
pinkarrowarts.org

Pink Arrow Arts introduces Pink Arrow Studio in 2025—a vibrant space designed for workshops, events, artistic exploration and inspiration. In addition to featured artists exhibitions, offerings at Pink Arrow include a Lecture Series on interesting and diverse topics, art classes in a variety of mediums, a selection of secondhand books, and an eclectic mix of unique gifts in the Makers Shop.



DR. SONJI LEE



2021 - Best Mixed Media

Cloud Croft Studios and Tioga Arts Council, Owego, NY
“Every Day Life Every Day Art” – Juried

2020 - People’s Choice Award

Butternut Gallery & Second Story Books, Montrose, PA
Focus, Juried Regional Exhibition



**Schedule your visit to the Art Nest Gallery
at the Farm at Johnson Pond**

**570-278-5088 • FB@TheFarmatJohnsonPond
sonji@thefarmatjohnsonpond.com**



ARTS *and culture*

ENDLESS MOUNTAINS THEATRE CO.

endlessmountainstheatreco.org

Founded in 1999, Endless Mountains Theatre Company brings the excitement of live theatre to the local stage. EMTC has a full season of shows planned in 2026. For upcoming performances and auditions, visit the website or find them on Facebook.

WELLNESS ARTS CENTER

200 Lake Ave., Montrose, PA
wellnessarts.com

The Wellness Arts Center is a destination for both personal and cultural enrichment. The Center hosts 10 different styles of yoga classes, special events and programs, musical concerts, literary opportunities, guest speakers, and expanded counseling and therapy services. The Wellness Arts Center is an organization that continually seeks dynamic, eclectic programs to offer the region.

SUSQUEHANNA SYMPHONY SOCIETY

susquehannasymphonysociety.com

The Susquehanna Symphony Society is dedicated to bringing live musical performances to the county, such as classical, jazz, and other popular styles. We strive to keep performances affordable, working with other organizations that subsidize the arts, with an emphasis on student audiences.



A CREATIVE COLLECTIVE
OF FINE ARTISTS & ARTISANS

Slanted ART

COOPERATIVE GALLERY

**Gallery, Artist Receptions,
Classes & Workshops**



158 CHURCH STREET
MONTROSE, PA 18801

570-243-1075

EMTC

est. 1999

Endless Mountains Theatre Company
*Add a night of laughter, music,
and storytelling to your visit.*

*Join us for comedies, musicals
heartfelt dramas and original works
— all performed by talented
community artists.
Perfect after a day of exploring
Susquehanna County.*

◆ **On Stage in 2026**

- The Boardinghouse
- One Act Originals: Motel Edition
- Summer Musical TBD
- Theatre Camp Finale
- Fall Murder Mystery

show titles & schedule subject to change

Scan for upcoming
show dates &
ticket links



Live Theatre. Local Flavor.

Artists'
Open
house
Weekend

follow the
ORANGE arrows
to nearly
20 artists
in 16 studio
locations



30th Annual Tour
October 10, 11 & 12
10-5 Daily



ARTISTSTOUR.COM

Funded in part by Susquehanna County Room Tax Funds

Susquehanna
Symphony
Society

EXPERIENCE THE

MAGIC
of music

Scan QR
code for
performances
and more:



SUSQUEHANNA SYMPHONY SOCIETY

Live musical performances
at affordable prices

Classical, Jazz, and Other Popular Styles

www.susquehannasymphonysociety.com



growing SUSQCO

***Connect with the land,
explore rural life, and support
sustainable family farms.***

From hand-picking orchard-fresh fruit to learning how farms operate—or simply soaking up the fun at fairs and festivals—agriculture here is authentic, welcoming, and hands-on. Along the way, you'll make lasting memories while supporting small farms and helping preserve the county's rural landscapes for future generations.

Roadside farm stands dot the countryside, offering homegrown fruits and vegetables, locally raised meats and dairy, and a variety of specialty items. Stock up on maple syrup, honey, handmade jams and jellies, baked goods, and handcrafted treasures. Shopping directly from farm-based retailers lets you create your own farm-to-table experience—and meet the people who grow your food.



FARMS

BARBOUR FARMS

barbourfarms.com

For over 80 years, Barbour Farms has been family owned and operated. They practice organic and sustainable agriculture in their garden and raising their beef and pork. The small herd of grass-fed Jersey cows produce raw, A2A2 milk—available at the farm store with other locally sourced products. The farmhouse is available for short term rentals or experience glamping at the “hotel in the woods” where you’ll find hot running water, bathroom facilities, bedding with linens and an outdoor kitchen.

PENN-CAN BERRY FARM

SR 858, New Milford

July and August are berry-sweet at Penn-Can, where you can pick your own raspberries and blueberries—or let them do the picking for you. Follow them on Facebook for daily updates during the season. Find more berry picking at **Hilltop Berry Farm** (New Milford) and **Blueberry Haven** (Auburn).

RUSSELL FARMS

Hawleyton Rd, Brackney
russell-farm.com

Celebrate fall on the farm from mid-September through Thanksgiving. Enjoy apple picking, fresh-pressed cider, homemade donuts, pumpkins, flowers, local cheeses, and bakery treats. Weekend family fun includes hayrides, a corn maze, farm animals, a historic one-room schoolhouse, bounce houses, and a jumping pillow. The year-round farm store features fresh produce, baked goods, groceries, and gifts.

JAYNES ORCHARDS

Jaynes Rd, West Auburn

Known for hand-picked and carefully sorted apples, Jaynes Orchards also produces its own apple cider. Visitors can find grapes, peaches, sweet and tart cherries (pick-your-own), pumpkins, and seasonal squash.

LOCH'S MAPLE

Cokely Rd, Springville • lochsmapple.com

March is maple season at Loch's Maple. Tour the tap house on Saturdays, shop the on-site store, and take home your favorite maple treats. Nationwide shipping is available so you never miss a taste of SusqCo.

FAIRS & FESTIVALS

HARFORD FAIR

harfordfair.com

The undisputed Best Week of Summer, the Harford Fair brings the entire agricultural community together. Nightly main-arena events include truck and tractor pulls, rodeo action, and demolition derbies, while daily shows fill the North and South Arenas. Wander the barns to meet cows, sheep, goats, horses, pigs, and rabbits, then enjoy exhibits, shopping, and unbeatable fair food—from milkshakes and strawberry shortcake to chicken spiedies and funnel cakes. Carnival rides, free parking, and shuttle service make it easy to enjoy it all.

THE ENDLESS MOUNTAINS FIBER FESTIVAL

endlessmountainsfiberfest.com

The largest and longest-running fiber festival in Pennsylvania, this celebration brings together fiber enthusiasts from across the Northeast. Explore raw and processed fibers, finished garments, handcrafted goods, and fiber-crafting supplies. Enjoy demonstrations, classes, animals, contests, a fleece show and sale, great food, and more—no matter your fiber passion.

FLOWER FARMS

FROLICKING FEATHERS FLOWER FARM

Montrose

Specializes in cut flowers, pick-your-own, bouquets and classes. Seasonal bouquets and subscriptions available. Find them on Facebook & Instagram.

TWINING SEASONS FARM

Friendsville • twiningseasonsfarm.com

Elegant, sustainably grown flowers offered through pick-your-own experiences, bouquets, workshops, and seasonal subscriptions.

GARDENS

Get inspiration from the masters—the Master Gardeners of Susquehanna County, that is. Stroll through the diverse gardens around the county.

MONTROSE

Home of the **Penn State Extension** office (Chenango St) where you'll find the prize-winning Educational Garden, featuring 10 raised bed gardens, trellis garden, onion bed, green roof, apple trees and blueberry patch. Tours available upon request.

Three Pollinator Gardens are located on the grounds. These monitor gardens were established as part of a statewide research project at Penn State University to study plant and pollinator preferences.

Other gardens in Montrose: **Day Lily Garden** (Montrose Bible Conference grounds, Laurel St/Lake Ave), **Gazebo Garden** and **Low Maintenance Garden on the Green** (Lake Ave).

SALT SPRINGS PARK

Step back in time at the **Historic Kitchen Garden** beside the Wheaton House, showcasing 1800s-era vegetables and flowers, each clearly labeled for visitors.

HARFORD FAIRGROUNDS

Several gardens are located on the fairgrounds, including near the Master Gardeners and 4-H buildings. Gardens include: a spiral herb garden, pollinator gardens, lasagna-style, and shade gardens. Gardens in front of the Master Gardener building feature an educational theme that changes annually.

SUSQUEHANNA DEPOT POCKET PARKS

DRINKER CREEK GARDEN

Spring bulbs, native perennials, and a shaded upper level. The park renewed an existing railroad tie terraced hillside with a creek running below the garden's edge.

VIADUCT PARK

Provides year-round interest as a pollinator garden with color and seasonal variety. Extensive stonework adds to the garden's beauty in the main section of town.



FRANKLIN AVENUE

A trio of gardens were designed around the remnants of building foundations and exterior walls, representative of Susquehanna being known as the "City of Stairs."

WILLOW AVENUE HILL GARDEN

Drought-tolerant perennials, shrubs and trees provide a lovely solution to a steep slope.

IRA REYNOLDS RAIN GARDEN

Located in Ira Reynolds Rain Garden and designed to capture water from a pavilion roof. Perennial and grasses, planted with native pollinators.

SUSQUEHANNA COUNTY
**HOUSING & REDEVELOPMENT
AUTHORITY**



PROVIDING SAFE,
SANITARY, AND
AFFORDABLE HOUSING
TO SUSQUEHANNA
COUNTY RESIDENTS
FOR OVER 50 YEARS

570-278-3011
www.susqcohra.com

*Your destination for personal
and cultural enrichment.*



Wellness Arts Center

200 Lake Avenue, Montrose, Pa

wellnessarts.com

570.290.7397

BEST WEEK OF THE SUMMER



HARFORD FAIR



August
17-22

WWW.HARFORDFAIR.COM



BREWRIES

and wineries

LITTLE IRELAND BREWING CO.

1260 Main St., Susquehanna
570.853.4644

This craft brewery, located in the heart of downtown Susquehanna Depot, offers up a family-friendly atmosphere in a full-service restaurant. Check out the Facebook page to see what's new on tap, weekly food specials and the line-up of live entertainment.

COUNTRY TRAILS BREWING CO.

19815 SR 706, Montrose
countrytrailsbrewing.com

Visit Susquehanna County's newest brewery located near Heart Lake, just east of Montrose. Featuring 12 taps, special events, live entertainment, outdoor seating, and serving up Andy's Pizza and other pub favorites.

THE BARR AT RED ROCK

33288 SR 171, Susquehanna • 570.860.6066 • eatredrockbbq.com

Conveniently located in Red Rock BBQ, the BARR brings you carefully crafted beers and seltzers. Try a refreshing ale, rich porter, smooth lager or savor the complex flavor of an IPA. Catch a live performance or test your wits during trivia night.

the **montrose**
Wine
Walk

SAVE THE DATE

MAY 16, 2026

Downtown Montrose, Pa

LOCAL
Wineries

Live
MUSIC

LOCAL
Artisans



**RUN
NOW**
Wine
Later **5K**

MAY 16, 2026

9:00AM

United Way of Susquehanna County
67 PUBLIC AVE, MONTROSE, PA



Register today!

BREWERIES *and wineries*

SAINT JOE'S WINERY

889 Johnson Rd., Friendsville • 570.553.4339
saintjoewinery.com

Tucked away on the edge of the woods—but not too far off the beaten path—is Saint Joe's Winery. Stop in for tastings, with wines available by the glass or bottle. Wine Slushies are also available, along with PA-brewed beers. Sample some of Rick's Ramblin' Raspberry—made with all raspberries and no grapes bringing the bold, fruit flavor to your glass. Also on the menu is Lindbergh's White—named for famed aviator Charles Lindbergh whose plane made an emergency landing in a nearby hayfield during a storm in 1927.



HIDDEN CREEK VINEYARD & WINERY

271 Carter Rd., Laceyville • 272.255.3032 • hiddencreekwines.com

The charming Hidden Creek Vineyard & Winery produces handcrafted, award-winning wines from Pennsylvania grapes and local orchards. The winery offers tastings amidst the serene surroundings. The winery is available as a venue for special occasions, events and benefits. Make sure to try to Bluestone Wine—named for the locally quarried flagstone native to Susquehanna County.

SUSQUEHANNA COUNTY
HERITAGE
x TRAIL

Events Happening October 3 & 4

Experience fall along the Susquehanna County Heritage Trail, where historic sites come alive with special events, guided tours, and seasonal programming set against brilliant autumn color.

Spend the weekend exploring museums, landmarks, and heritage attractions as they open their doors to share stories, demonstrations, and local traditions that celebrate the county's past.

15+ Historic and Heritage sites open throughout the weekend with guided tours, docents and special events

Check visitsusqco.com for special events, days and times for each site, hours are typically 10-4, but may vary by site.

Saint Joe Winery

889 JOHNSON ROAD
FRIENDSVILLE, PA 18818

570-553-4339

SAINTJOEWINERY.COM

f /SAINTJOEWINERY

Family Owned & Operated

Hours of Operation

THURSDAY 2-8PM*

FRIDAY 2-8PM

SATURDAY 12-8PM

SUNDAY 12-4PM

*CLOSED THURSDAY

NOVEMBER-MARCH



Erie
Insurance

Above all in SERVICE™

Auto • Home • Business • Life

Call us for a quote today.

The Sipe Agency Inc.

210 Maple St.
Montrose PA 18801

PO Box 610
Wyalusing PA 18853

570 278 ERIE (3743)

570 746 9025

Brian Sipe - Owner

Bill Kelley - Agent

Not all companies are licensed
or operate in all states.
Not all products are
offered in all states.
Go to erieinsurance.com
for company licensure and
territory information.

LBC SEALCOATING

Montrose, PA

Asphalt Sealcoating

Crack Filling

Line Striping

**FREE
ESTIMATES!**

570-278-1640

www.lbcsealcoating.com

Rediscover Susquehanna

Create New Memories in Our Historic Spaces.

Rockin' By the River

Summer Concert Series starting June 11th
each Thursday at 6pm (except July 16)
Live Music - Food Vendors - Local Breweries

Susquehanna Hometown Days

Red, White & Blue 250 Celebration

July 17-18

Friday: Patriotic Parade, 5:30; Festival in the Park,
6:00 with food, craft vendors, games.

Live music, 6:30-9:30; Fireworks, 9:30

Saturday: Dan Wolfe Memorial 5k Run/Walk, 8:00.

Festival opens at Noon with food, craft vendors,
games, children's activities, entertainment.

Live Music All Afternoon & Evening!

Merry & Bright Winter Festival

December 12

Breakfast with Santa, 8:30-10:30, St. John's Hall;

Festivities in the Park, 1:00, include Live Nativity,
food, craft vendors, "Reindeer Games" for the kids!

**All Events Sponsored by the
Susquehanna Community Development Association**

Unless otherwise noted, all events held in Ira Reynolds Riverfront Park.

**For More Info & Events
Follow Us on Facebook**



PENNSYLVANIA Trail OF THE Year 2021



D&H RAIL-TRAIL

The 38-mile-long D&H Rail-Trail winds through Lackawanna, Susquehanna, and Wayne Counties as it follows the former corridor of the Delaware & Hudson Railway, which carried anthracite coal out of the Lackawanna Valley. From its beginnings in the Lackawanna Heritage Valley, the D&H enters the Endless Mountains Heritage Region, known for its farms and bluestone quarrying. It passes under the historic Starrucca Viaduct, the "bridge of stone" in Lanesboro. The D&H attracts runners, hikers, bikers, and equestrians, and in winter, cross-country skiers appreciate the trail grooming done by the snowmobile club who use the D&H as the backbone of their snowmobile trail system. Managed by the Rail-Trail Council of NEPA, the D&H is improved for 20 miles in the south from Carbondale to Ararat and 6 miles in the north from Stevens Point to the NY border. Plans are to continue improvements in the trail's mid-section.

For a trail brochure/map or more information on trail events and programs, contact the Rail-Trail office at 570-679-9300 or nepatrails@gmail.com. Stop by our trail office at 948 N. Main Street Union Dale.

Visit our website at www.neparailtrails.org



LODGING

*play here,
stay here*



BRACKNEY - FRIENDSVILLE

OFF-GRID CABIN

VRBO: 3476494

CAMP AC BED & BREAKFAST

campacbednbreakfast.com

THE POND HOUSE

VRBO: 1541831

MARY JANE COTTAGE

Airbnb: 11471085

LAUREL LAKE COTTAGE

Airbnb: 22472041

THOMPSON

ROCK LEDGE LODGE

rockledgelodge.com

SPENCER HOUSE

Airbnb: 14196241

THE KING'S BARN

thekingsbarn.com

CAMP BLUESTONE

campbluestonevenue.com

CAMPING

MONTROSE CAMPGROUND

403 PRATT RD., NEW MILFORD, PA 18834

RV Camping; Tent Camping

Ph: (570) 278-9999

Email: Montrosecampsites@frontier.com

SHORE FOREST CAMPGROUND

21 THE DRIVEWAY,

HOP BOTTOM, PA 18824

RV & Tent Camping; Cabin & Trailer Rentals; shoreforestcampground.com

SHADY REST CAMPGROUND

2684 STATE RTE 2067,

UNION DALE, PA 18470

RV Camping

shadyrestcampgroundpa.com

SALT SPRINGS STATE PARK

14 Rustic Campsites (8/walk-in only, 4/campers >30'); 3 rustic cabins
friendsofsaltspringspark.com

ROCK MOUNTAIN BIBLE CAMP FAMILY CAMPGROUND

1156 ROCK MOUNTAIN DR.,

SUSQUEHANNA, PA 18847

Open May 15 – Oct 12, 2026; Tent & RV Camping; Cabin; Cottage
rockmountainbiblecamp.org

FROGGY HOLLOW FARM BED & BREAKFAST

12316 SR 92, South Gibson, PA 18842

October to May

Suite with Private Bath

Hot-Tub on Deck Overlooking Fields & Stream

3 Bedrooms with Shared Newly Renovated Bath

In-Ground Heated Pool

Pet Friendly

Close to I-81 & Elk Mountain

570-756-3063

Owner on Premises



Fieldstone Farm

Offering
Montrose
lodging
downtown
or lakeside!



607.765.7876

Fieldstone Farm 1818 House
and Fieldstone Farm Vacation
Rental on Lake Montrose

OCTAGON BARN
at Woodbourne
WEDDING & EVENT VENUE

Wedding & Event Venue
Reserve your date now!

914 Woodbourne Road
Montrose, Pa 18801

570.767.7000

LODGING *play here, stay here*

MONTROSE AREA

HOOTS INN/NOONAN'S GETAWAY

Airbnb: 32336661

THE INN AT MONTROSE

Call to reserve 570.278.1124

THE MONTROSE HOTEL

Call to reserve 570.278.1124

ROSEMONT INN BED & BREAKFAST

therosemontinnbb.com

MODERN ESCAPE

Airbnb: 1192864918798571642

COTTAGE ON LITTLE ELK LAKE

Airbnb: 24397057

ON LAKE TIME

Airbnb: 14928378

TIMBER LAKE HOUSE

Airbnb: 921798855965984411

WHISPERING PINES

Airbnb: 752954974290794889

FIELDSTONE FARM LAKE HOUSE

fieldstonefarmbandb.com

MOUNTAIN CREEK HAPPY PLACE

Airbnb: 1064807511189367116

CLIFFORD

MOUNTAIN VIEW LODGE

mtviewlodging.com

FERN HALL ESTATE

fernhallestata.com

WIFFY BOG FARM

Airbnb: 47149054

BLUE ELK LODGE

gowanderhome.com/listings/
blue-elk-lodge

QUARRY HILL FARMS

quarryhillfarms.com

ZAKOPANE LOG HOUSE

Airbnb: 768240057565722200

UNION DALE

ARLO'S

arloucountrystore.com/lodging

CHET'S PLACE

chetsplace.com/lodging

THE SPEAKEASY SALOON & RESORT

Call to reserve 570.679.2100

LAZY BEAR LODGE

AirBNB: 24521034

ELK MOUNTAIN ESCAPE

Evolve: 453845

ENDLESS MOUNTAIN RESORT

endlessmountainresort.com

THE COUNTRY HOUSE AT TALL PINES

tallpinescountryhouse.com

THE ELK RETREAT

marastay.com/elk-retreat

ROUNDHOUSE LODGE

Airbnb: 5869818

CLARK COTTAGE

Airbnb: 25812716

HOP BOTTOM

SHORE FOREST CAMPGROUND

shoreforestcampground.com

SPRINGVILLE

WREN'S NEST

Airbnb: 30512826

Conklin's Unique Country



Custom Furniture
Home Decor
Gift Items
Flameless Candles
Gourmet Food Items
Purses & Jewelry
Soaps & Lotions
Antique Lumber
Gift Cards

20% OFF

Bring in This Coupon Before Dec. 31, 2026
& Receive 20% an Item of Your Choice
some exclusions apply, lumber not included

20% OFF

www.conklinsbarnwood.com

570-465-5500

DIRECTIONS: Exit 223 off I-81 to Route 492 (East) - 3.5 miles to Lakeside.
Turn Left on Butterfield Road (dirt road). Take the first left after the pond.
HOURS: Monday thru Saturday - 10AM-4PM



Experience a Thrift-venture at Susquehanna County **INTERFAITH**



526 Church Street
Montrose, PA 18801

695 Jackson Avenue
Susquehanna, PA 18847

500 Main Street
Forest City, PA 18421

TREASURES FOUND HERE!

- CLOTHING, SHOES & ACCESSORIES
- SMALL HOUSEHOLD APPLIANCES
- COLLECTABLES & ANTIQUES
- SMALL ELECTRONICS & TOOLS
- & MORE SPECIAL TREASURES!

**NEW
PRODUCT
DAILY**



Shopping at Interfaith helps fund vital emergency assistance and support programs for individuals, families, and seniors in our community!

570-273-8695

www.interfaithsc.org

LODGING *play here, stay here*



I-81 CORRIDOR

FROGGY HOLLOW FARM B&B

October thru May: 570.756.3063

BLUE RIDGE MOTEL

570.465.2675

COLONIAL BRICK INN & SUITES

colonialbrickinnandsuites.com

PARKVIEW HOTEL

570.465.7940

THE PATRIOT HOUSE

thepatriohouse.com

HEMLOCK HOLLOW

Airbnb: 16095600

BARBOUR HILL FARMHOUSE & GLAMPING

Airbnb: 832115501719961846

BRANT HOUSE

Airbnb: 682533449851752469

OLIVIA HOUSE

Airbnb: 37328808

HOLIDAY INN EXPRESS & SUITES

[ihg.com/holidayinnexpress/
hotels/us/en/new-milford/nmfpa/
hoteldetail](http://ihg.com/holidayinnexpress/hotels/us/en/new-milford/nmfpa/hoteldetail)



202 CHURCH STREET IN MONTROSE



HOMETOWN FURNITURE

Custom made Amish tables and chairs

Made in the USA couches, sectionals, recliners

Quality Rugs

Bedding and towels, sheets, comforters

570-396-6300



202 CHURCH STREET IN MONTROSE

LYDIA'S BAKE SHOP

Specialty Cookies

New flavors every month!

Follow us on Facebook

@lydiasbakeshop

570-533-7195



Home Decor & Clothing Boutique

HOMETOWN FINDS

570-396-6300

226 CHURCH STREET IN MONTROSE



Coordinating Economic and Community Development throughout the Region

570-265-0937 • authority@cbprogress.org • www.cbprogress.org



Progress Authority



2026 events

MARCH

21: INTERNATIONAL DAY OF FORESTS HIKE

Salt Springs State Park

Celebrate the International Day of Forests with a day hike hosted by the Endless Mountains Heritage Region at Salt Springs State Park. The hike will include forest bathing among the trees in the old-growth hemlock forest.

Info: emheritage.org

11: CRAFT FAIR & QUILT SHOW

Old Mill Village Church, Midtown Park,
New Milford, 10am-3pm

Info: oldmillvillage.org

...

APRIL

4: TROUT SEASON OPENING DAY

Check out huntfish.pa.gov for information on licensing, daily limits, and regulations!

11: HEMLOCK WOOLLY ADELGID LECTURE

Salt Springs State Park, 10-11am

DCNR Service Forester leads discussion on history, background and control of the invasive insect.

Info: friendsofsaltspringspark.org

25: SALT SPRINGS PARK CLEAN-UP DAY

Starting at 9am

Volunteers needed for trail clearing, cleaning of buildings, raking flowerbeds and lawns, splitting firewood and more. Lunch and t-shirt provided. Register in advance.

Info: friendsofsaltspringspark.org

...

MAY

9: TIMELINE OF HISTORY

Old Mill Village, noon-5pm
SR 848, New Milford.

Medieval, Viking, American Colonial and Fur Trade, the Civil War and World War II. An exciting stroll through the centuries!
Info: oldmillvillage.org

16: MONTROSE WINE FESTIVAL

Downtown Montrose

Wineries, Cideries, Breweries, Food, Live Entertainment. Run Now, Wine Later 5K!
Info: montrosewinewalk.com

Benefits United Way of Susquehanna County, Info:
unitedwayofsusquehannacounty.org

23: ARCHERY FOR BEGINNERS

Salt Springs State Park,
10am-Noon

Beginners program, equipment provided. Fee.
Info: friendsofsaltspringspark.org

...

JUNE

6: MIDTOWN FEST

Main St., New Milford.

Vendors, food, chicken barbecue.

6: ICE CREAM SOCIAL

Old Mill Village Church,
10am-3pm, Midtown Park

Enjoy a refreshing dish or cone of ice cream, or a root beer float! Meet the Susq. County Dairy Princess and her Court. No admission charge, pay only for what you buy.

12: BATS PROGRAM

Salt Springs State Park, 7:30-9pm

Short presentation followed by participation in PA Game Commission's Appalachian Bat Count Initiative. Donations accepted. Another Bat Count on July 19. Info: friendsofsaltspringspark.org

13: ARCHERY FOR BEGINNERS

Salt Springs State Park,
10am-Noon

Beginners program, equipment provided. Fee.
Info: friendsofsaltspringspark.org

14: CELEBRATION PADDLE

Join the Endless Mountains Heritage Region (EMHR) for a day-trip paddle on the northern branch of the Susquehanna River from Oakland Twp to Hallstead. Please check in and sign waivers at Phantom Fireworks of Great Bend Shopping Plaza (25059 US-11, Hallstead, PA 18822) by 8am Registration/Info: emheritage.org

20: MIDSUMMER FESTIVAL OF GAMES

Old Mill Village, SR 848,
New Milford, noon-5pm

Old time outdoor games that our ancestors played, that are still as fun today as then.
Info: oldmillvillage.org

CENTURY 21
JACKSON REAL ESTATE
570-432-9511



DORREEN MANLEY
GRADUATE REALTOR® INSTITUTE
COMMERCIAL SPECIALIST E-PRO

My Listings Are Selling Fast!
Full-Time, Experienced, Reliable & Dedicated Agent!
List With Me - I'll Get You Moving!!

237 CHURCH ST, MONTROSE, PA 18801
Check Out Current Listings → 
Call Dorreen Today!
607-427-8746
Serving & Licensed in PA & NY

2026 *events*

27: INDEPENDENCE DAY PARTY

Salt Springs State Park, 11am-4pm

Homemade pie auction, white elephant sale, quilt show and exhibit, crafts and food trucks. Entertainment by Blue Velvet 13-piece Big Band. Info: friendsofsaltspringspark.org

...

JULY

4: INDEPENDENCE DAY CELEBRATION

Downtown Montrose

5k & 10k Road Races; HUGE Patriotic Parade, vendors, chicken barbecue, food, fireworks. Info: montrosepajuly4th.com

11: ENDLESS MOUNTAINS PARACON

Old Mill Village, SR 848, New Milford

Ghost hunters alert! Paranormal investigation teams, vendors, and speakers. Topics: Ghosts, cryptids, and the unexplained.

11: ARCHERY FOR BEGINNERS

Salt Springs State Park, 10am-Noon

Beginners program, equipment provided. Fee. Info: friendsofsaltspringspark.org

17-18: SUSQUEHANNA HOMETOWN DAYS: RED, WHITE & BLUE 250 CELEBRATION

Ira Reynolds Riverfront Park

Rides, food, games, entertainment, vendors, parade, and Dan Wolfe Memorial 5K Run/Walk on Saturday, July 18. Find the Susquehanna Community Development Association on Facebook for more information.

19: SALT SPRINGS STATE PARK BAT COUNT

Help monitor the health of Pennsylvania's summer bat colonies at Salt Springs State Park.

Info: friendsofsaltspringspark.org

23-25: CLIFFORD TOWNSHIP VOLUNTEER FIRE CO. PICNIC

1035 SR 106, Clifford

Food, games, rides, parade, fireworks, chicken barbecue.

...

AUGUST

1: ARCHERY FOR BEGINNERS

Salt Springs State Park, 10am-Noon

Beginners program, equipment provided. Fee.

Info: friendsofsaltspringspark.org

1: TRAIL TOWN FESTIVAL

Downtown Forest City

Music, food, vendors, family fun capped off with a Light Parade on Main Street. Info: visitforestcitypa.com

7-8: BLUEBERRY FESTIVAL

Montrose, PA on the Green

9am-4pm

Breakfast served both mornings, used book tents, bake sale; crafts, food, games for kids; 5k; white elephant sale; raffles; silent auction; quilt raffle. Info: susqcolibrary.org

17-22: 168TH HARFORD FAIR

485 Fair Hill Rd., New Milford

Rides, games, animals, entertainment, truck & tractor pulls, demolition derby. THE BEST WEEK OF SUMMER! Info/advanced tickets/reserved grandstand seating: Info: harfordfair.com

15-16: OVERNIGHT HIKE

Salt Springs State Park

Join the Endless Mountains Heritage Region (EMHR) at Salt Springs State Park. This two-day hike is Saturday, August 15 overnight into Sunday, August 17. Registration/Info: emheritage.org

29: DULCIMER CONCERT

Old Mill Village Church, Midtown Park, New Milford

Admission. Info: oldmillvillage.org

SAVE THE DATE



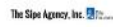
Christmas in **MONTROSE**

DECEMBER 4-6TH 2026



**Free Photos with Santa
Free Horse Drawn Carriage Rides
Christmas Market with 80+ Vendors
Fun Photo Ops & More**

THANK YOU TO OUR 2025 SPONSORS



CHECK OUT OUR WEBSITE! WWW.CHRISTMASINMONTROSE.COM

Advertising funded in part through the Susquehanna County Room Tax Fund through the Susquehanna County Promotion & Tourism Agency

2026 events



30: FIELD, FOREST & FALLS RACE

Salt Springs State Park, 7am-6:30pm

Participants can choose from a 5K, 10K or 50K option. All courses are technical trails through a beautiful old-growth forest with spectacular scenery. Questions can be directed to Chris and Elisabeth at saltspringstrailraces@gmail.com. Find all the details here: <https://runsignup.com/Race/PA/Montrose/SaltSpringsTrailRace>

...

SEPTEMBER

6: CLIFFORD PARKFEST

Vendors, Entertainment, Food, Carriage Rides. Come explore the walking trails and all Clifford Township Park has to offer visitors! Info: cliffordtownship.org

12: ENDLESS GRAVEL GRAND DEPART

Towanda, Bradford County

Ride the Endless Mountains bikepacking routes at the 3rd Annual September bikepacking endurance event. Routes are 115, 250, and 430-mile, multi-surface masterpieces comprised of rural dirt and gravel roads, rail-trails, paved roads through small historic downtowns, and various ascents over scenic rolling hills. Start is in Towanda, Bradford County.

Info: emheritage.org

12: ARCHERY FOR BEGINNERS

Salt Springs State Park,
10am-Noon

Beginners program, equipment provided. Fee. Info: friendsofsaltsspringspark.org

12-13: ENDLESS MOUNTAINS FIBER FESTIVAL

Harford Fairgrounds

A celebration of fiber animals, products, and related goods. Vendors from the Northeastern US with a diverse selection of goods and services: raw and processed fibers, finished garments, handcrafted arts and crafts, fiber-crafting supplies, demonstrations, contests, exhibitors, fleece show & sale, raffles and food. www.endlessmountainsfiberfest.com

19: FALL FESTIVAL & PUMPKINTOWN

Old Mill Village, SR 848,
New Milford

Harvest time activities for the whole family. Plus, the village is again inhabited by our "Pumpkintown" friends, a traditional delight of the season. Info: oldmillvillage.org

...

OCTOBER

3-4: SUSQUEHANNA COUNTY HERITAGE TRAIL

Susquehanna County, 10am-4pm

Self-guided tour explores the historical and heritage sites in Susquehanna County. Info: visitsusqco.com

3: CIVIL WAR DAY

Old Mill Village, SR 848, New Milford

The Village will be hosting Civil War reenactors with displays and demonstrations. Info: oldmillvillage.org

10: APPLE CIDER MAKING & FALL FARE

Salt Springs State Park, 10 am-1 pm

Celebrate the bounty of fall and discover how to press apples into delicious, fresh cider. Pressing apples into cider for sale. Fun for all ages. Warm homemade soup and bread available for purchase. Info: friendsofsaltspringspark.org

9-10, 16-17: HISTORIC GHOST WALKS OF PA

Old Mill Village, SR 848, New Milford, 7-9pm

Take a spine-tingling nighttime candlelight tour of the Village, while being thrilled by tales of ghosts and hauntings from our area and around the state of PA. Your shivers will not be from the chilly weather! Cider, hot chocolate and donuts provided at the end of the tours. Tours start about every 20 minutes throughout the night. Admission. Info: oldmillvillage.org

10-11: ELK MOUNTAIN FALL FESTIVAL

Artisan and Craft Vendors, Festive Food, Scenic Chair Life Rides, Hayrides, Shuttle Parking. Info: elkskier.com



10-11: ARTISTS' OPEN HOUSE STUDIO TOUR WEEKEND

Self-guided tour around Susquehanna County as resident artists open their studios to visitors. Artists on the tour work in various media, including paint, sculpture, fiber arts, glass and more. Info: artiststour.com

24: WITCHES' TEA

Old Mill Village Church, 2-4pm, Midtown Park, New Milford

Let your "inner witch" come out for Old Mill Village's annual Witches' Tea. Dress in your finest witch attire to sample a wicked variety of teas and delightfully decadent treats. Reservations required/Admission. Info: oldmillvillage.org

...

NOVEMBER

28: DEER SEASON

Regular Firearms Opening Day. Check out the Pennsylvania Game Commission website, pgc.pa.gov for information on licensing and state regulations.

2026 *events*

...

DECEMBER

4-6: CHRISTMAS IN MONTROSE

Three days with a variety of family-friendly events and attractions in PA's premiere small town holiday destination! Different events offered each day. Check the schedule. Vendors, 5k Run/Walk, 'Taste of Montrose' tours, Holiday Light Parade, Community Chorale Concert, Shopping, Games, Photos with Santa, Carriage Rides, Entertainment and More!
Info: christmasinmontrose.com

11: VICTORIAN CHRISTMAS TEA

Old Mill Village Church,
Midtown Park, New Milford, 11am-4pm

Enjoy an elegant interlude during the pre-Christmas rush. Relax with friends while tasting delectable treats and a variety of teas (or hot chocolate). Afternoon tea served all day. Donations gratefully accepted! Silent auction of gift baskets.

RACE *susqco*

RUN NOW, WINE LATER 5K

Saturday, May 16, Montrose
Scenic timed race through charming Montrose then celebrate your finish at the Wine Walk Festival. montrosewinewalk.com

MONTROSE FOURTH OF JULY 5K, 10K AND FUN RUN

Friday, July 4, Montrose
montrosepajuly4th.com

DAN WOLFE MEMORIAL 5K RUN/WALK

Saturday, July 18
Susquehanna Depot. Part of the Hometown Days annual celebration.
susquehannaborough.com

BLUEBERRY HILL 5K & NEWBERRY FUN RUN

Saturday, August 7, Montrose
After the race, refuel with the blueberry pancake breakfast and check out the family-friendly Blueberry Festival. findarace.com/us/events/blueberry-hill-5k-newberry-fun-run

SALT SPRINGS FIELD, FOREST & FALLS TRAIL RACE

Saturday, August 29
Choose a 5k, 10k, or 50k option. All courses are technical trails through an old-growth forest with spectacular scenery. findarace.com/us/events/salt-springs-field-forest-falls-trail-race

JINGLE BELL RUN 5K

Saturday, December 5,
Downtown Montrose
Festive attire suggested for this race held in conjunction with Christmas in Montrose.
christmasinmontrose.com



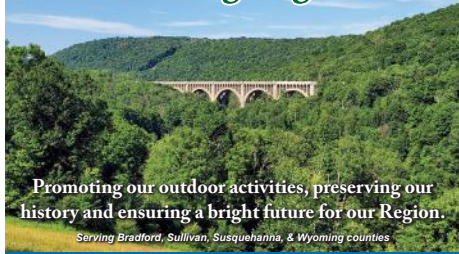


**Located in Historic
Downtown Montrose!**

- ♥ Clothing, Jewelry & Handbags
- ♥ Unique Greeting Cards
- ♥ Pottery & Candles
- ♥ Local Honey & Maple Syrup
- ♥ Montrose Merchandise
- ♥ Baby & Children's gifts
& So Much More!



14 Public Ave Montrose **Hours: Tues-Fri 10-5, Sat 10-3**
 570-278-6343 fromtheheartpa.com



Promoting our outdoor activities, preserving our history and ensuring a bright future for our Region.

Serving Bradford, Sullivan, Susquehanna, & Wyoming counties



Explore the Endless Mountains with Us!

emheritage.org (570) 265-1528

Check us out on Facebook & Instagram!



**SAVE WITH LOW-COST
NATURAL GAS!**

UP TO \$1600 IN REBATES

\$1000: Energy Efficient Furnace, Water & Steam Boilers

\$400: New Tankless Hot Water Heaters

\$200: New Hot Water Heaters ; Boiler Reset Controls

UP TO \$3200 IN TAX CREDITS

**ON QUALIFIED ENERGY EFFICIENT
APPLIANCES & PRODUCTS**

**Natural Gas: The Fuel of Choice
for Home Heating, Hot Water & Cooking**

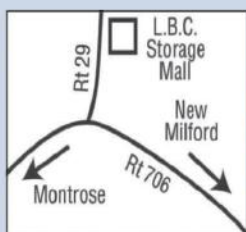
570-278-5863

WWW.LEATHERSTOCKINGGAS.COM

L.B.C. STORAGE MALL

Serving Montrose & Surrounding Areas for over 30 years

- Commercial Accounts Welcome
- Yearly Rentals Get up to Three Months Free
- Perimeter Fencing With 24 Hour Controlled Access
- Monthly Rentals
- Sizes: 5'x10'-10'x10'-10'x15'-10'x20'-10'x30'



15954 PA-29, north of Montrose

Please visit our website at
lbcstoragemall.com

570-278-1640

Your local real estate *experts!*

Don't settle for less...
call us, your local
professionals, for all
your real estate needs!

Angelia "Angie" Hall

Licensed Real Estate Salesperson PA
Cell: **607-761-6222**

Alan Hall

Licensed Real Estate Salesperson in PA & NY
Cell: **607-229-7606**



Real Estate Services



ENDLESS GRAVEL

PENNSYLVANIA

Explore Northeastern Pennsylvania from a different perspective.
The Endless Gravel PA bikepacking loops take you across hundreds of miles
of backroads through Bradford, Sullivan, Susquehanna, and Wyoming counties.
Come for the miles. Stay for the views.



Explore More!



Maps, Links &
Grand Depart
← Race Info

<https://emheritage.org/endless-mountains-gravel-bikepacking-loop/>

PENNSYLVANIA'S BEST SKIING & RIDING!

*It's Like Skiing
in Vermont...
without the Drive!*



ELK
MOUNTAIN®



UNION DALE, PA • (570) 679-4400 / TOLL FREE SKI REPORT: 1-800-233-4131 • www.elkskier.com