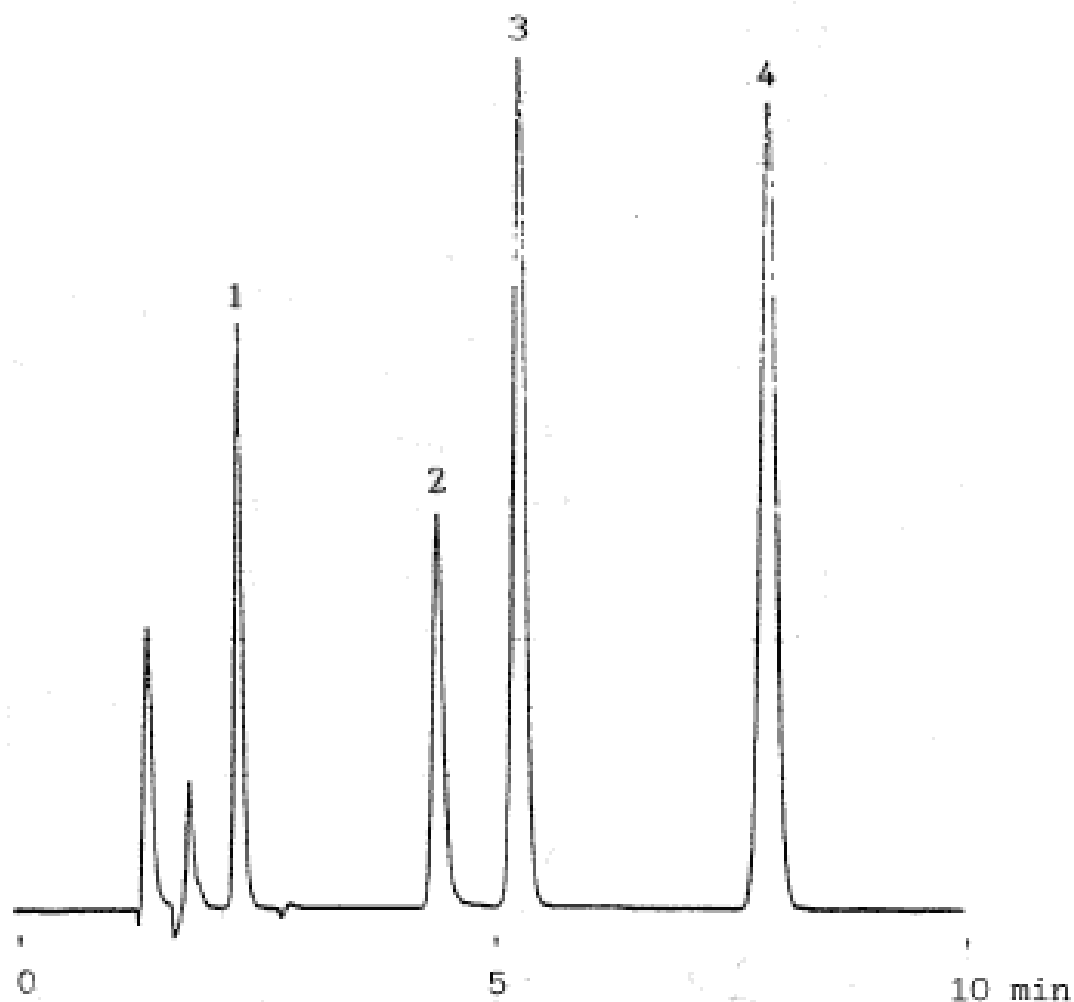


InertSearch™ for LC

Inertsil® Applications

Pesticides

Data No. LA268-0000



Column : ODS-Cu
5 μ m
150 \times 4.6mm I.D.

Column Cat. No. : 5020-02501

Eluent : CH₃CN/50mM KH₂PO₄+0.1% EDTA-2Na
(pH 3.5 by H₃PO₄)=40/60

Flow rate : 1.0 mL/min.

Col. Temp. : 40°C

Detection : UV 220 nm

Injection Vol. :

Sample :

Solutes : 1. Asulam
2. Oxine-copper
3. DDVP
4. Thiuram