

INSIDE OUT



Florence Hutchings
Jane Yates Robert Tilling MBE RI



‘Inside Out’

Florence Hutchings, Jane Yates
& Robert Tilling MBE RI

There are three linguistic definitions of the term ‘inside out’. The first suggests that the inner surface becomes the outer when a material is reversed. As small children we were often reminded by our parents that we’ve put our jumpers on ‘inside out’.

The second implies a state of disarray often involving drastic reorganisation. Businesses, whole corporate empires even, are often subject to this type of forensic upheaval in order to improve the bottom line. ‘The company was turned inside out!’

Within the context of modern and contemporary art practice each of the above definitions could be said to describe the thoughts and technical processes involved in the making of a successful painting.

From the 1950’s New York School of Abstract Expressionists and its French counterpoint Tachisme (meaning to stain or splash) through to the 1980’s Neo-Expressionists and right up to the recent rebirth of figurative painting, artists have continually sought to rework their ideas on canvas, layering up paint, exposing their brush marks and revealing hidden gestures.

The artist's primary concern, whilst ponderously spending hours in the studio drastically reorganising the spacial arrangements of form and colour, has been to stretch the boundaries and accepted traditions within art practice by turning convention on its head.

This disruptive approach to reinvention, in which the limits of painting are stretched inside out, provides us with new realities, images and previously unconsidered portrayals. This is the underlying truth of art at its very best. This is what makes art interesting for artists as much as it does for collectors.

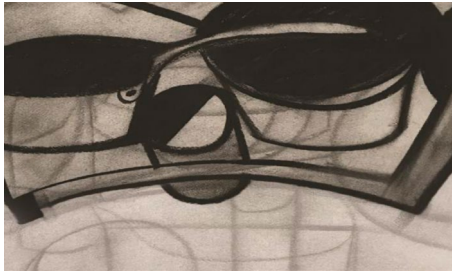
My interest in art history, theory and practice was ignited by the artist Robert Tilling. I still regard him as having the greatest influence on my career and his forensic knowledge of modern art, and in particular artists such as the British painters Patrick Heron and William Scott left a lasting impression upon me.

In a captivating lecture Tilling explained to a room full of mildly terrified art students that Scott used the traditional subject of a table-top still-life as the starting point for his paintings. The subject, he explained, became deliberately ambiguous as the composition could be seen to suggest a landscape or a figure just as much as a still life. As viewers of Scott's works we are, Tilling suggested, simultaneously indoors and outside at the same time.



William Scott, Still Life on Black Table I (Landscape Still Life), 1956, Oil on Canvas, 50cm x 100cm, Sold for £170,500 at Christies, 20th June 2016, Lot Number 3

Scott's influence over Tilling, who was known to many as a landscape painter, was not evident in the bands of colour that typically resembled sea and sky but towards the end of his life Robert Tilling produced a beautiful series of charcoal drawings that echoed Scott's kitchen table scenes. Covering the period from 1988 to 2008 these highly collectable works illustrate the artist's fascination with the genre and his influences which also include Giorgio Morandi and Nicolas de Stael.



Robert Tilling, Pots & Pans, 2007, Charcoal on Paper, 80cm x 50cm

The British artist Florence Hutchings was born in Kent in 1996 and studied at the Slade School of Fine Art in London. Since graduating in 2019 she has built an international reputation for her large size colourful still-life paintings which are inspired by everyday life and interior spaces.

Hutchings' surrounds herself with objects, drawings, plants, images and postcards that inspire her to create.

Often, she relentlessly draws in her home, expanding her practice from the studio, bringing her work into the domestic sphere.

This has been evermore present during the recent lockdowns, where the artist was forced to adopt her own domesticity as her primary source of influence. The sink in the bathroom, the stand in the sitting room, the plants, pots, and vases which make up her home. Hutchings' work is not just a documentation of the everyday. She uses a diverse vibrant palette and varied modes of painting to create a dialogue between the actual and the abstracted.



Florence Hutchings, Clothes Rail, 2017, Oil on Canvas,
180cm x 140cm

Jane Yates, born Jersey 1981, originally studied Fashion Design before moving to London and working within the industry. She applied to Byam Shaw School of Art and was awarded a full scholarship for a one year diploma in Fine Art and was then offered a place at Chelsea School of Art.

Since then the artist has continued her exploration and fascination of the unconscious through psychotherapy and works professionally in this field which is complementary to her studio practice.

Her confident, fluid and gestural paintings suggest landscape, sky and light and are produced in her north coast studio overlooking Bonne Nuit Bay in Jersey but they come from a place deep inside her soul and are outwards projections of the unconscious mind.



Jane Yates, Autumn Approach, 2020, Oil on Wood,
62cm x 38cm

So it is with great pleasure that I welcome you to this wonderful artistic exploration of the Inside and Outside in which landscape and interiors are expressed from within the artists own internal memory and from the observed world and everyday life.



Chris Clifford BA(Hons), MA Gallery Director,
Private and Public

Florence Hutchings





Florence Hutchings

Flowers at Night I,

Oil paint, oil bar, acrylic and collage on paper,

160x120cm

£5,500



Florence Hutchings

Dried Flowers on a Table,

Oil paint and collage on canvas,

85x60cm,

£1,800



Florence Hutchings

Flowers at Night II,

Oil paint, acrylic, oil bar and collage on canvas,

160x120cm

£5,500



Florence Hutchings

The Studio Easel,

Oil paint and collage on canvas

85x60cm

£1,800



Florence Hutchings

Sardines,

Oil paint, collage and oil bar on canvas

180x135cm

£6,000



Florence Hutchings

The Red Triangle,

Oil paint and collage on canvas,

180x135cm

£6,000



Florence Hutchings

The Vase and its Shadow (Daytime)

Oil paint, acrylic and collage on canvas

120x100cm,

£4,000



Florence Hutchings
Spring Blooms at Night,
Oil paint and collage on canvas
50x30cm
£1,200



Florence Hutchings

Plants at night II

Gouache, ink and collage on paper;

29x21cm

£500



Florence Hutchings

Plants at Night III

Gouache, ink and collage on paper;

29x21 cm

£500



Florence Hutchings
The Antique Collector's Cupboard I
Ink and collage on paper,
29x21 cm
£500



Florence Hutchings
The Antique Collector's Cupboard III
Ink and collage on paper,
29x21 cm
£500



Florence Hutchings

The Antique Collector's Cupboard V

Ink and collage on paper,

29x21 cm

£500



Florence Hutchings

Blue Flowers II

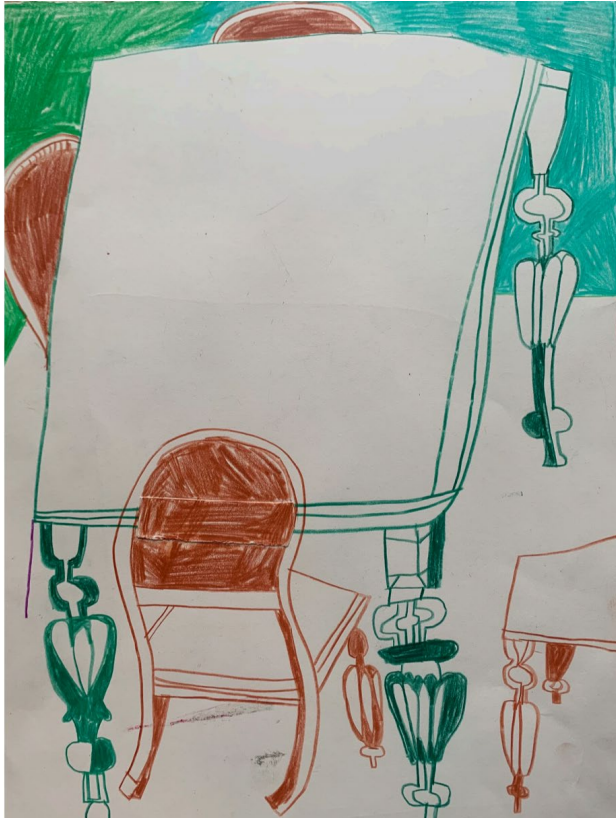
Oil pastel on paper;

42x29cm

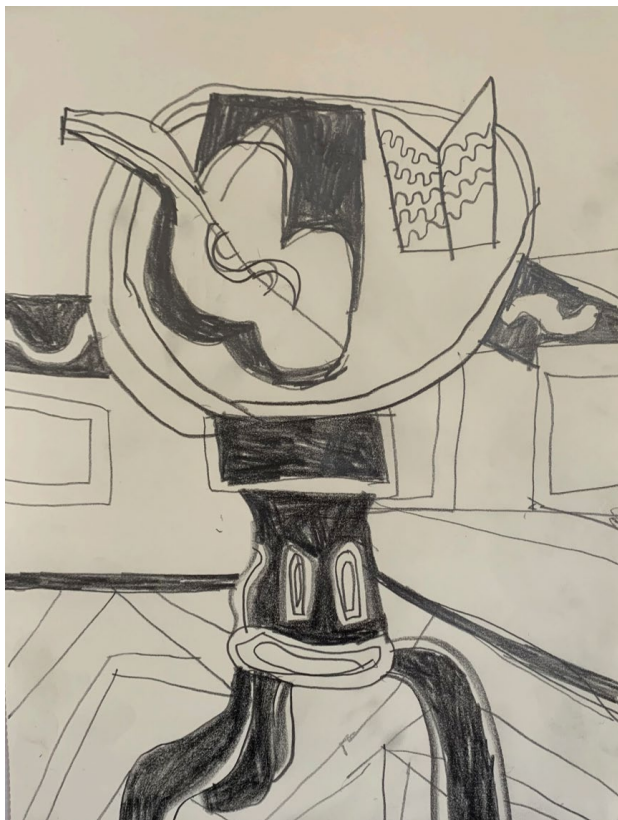
£900



Florence Hutchings
Jersey Table II
Oil pastel on paper
42x29cm
£900



Florence Hutchings
Jersey Table IV
Coloured pencil on table
42x29cm
£900



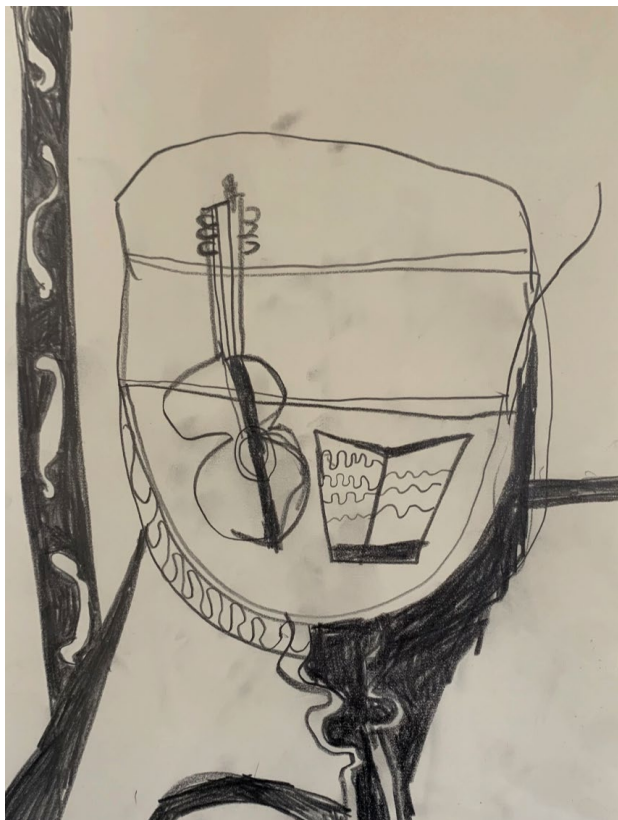
Florence Hutchings

Guitar Lessons I

Pencil on paper,

27x20cm

£500



Florence Hutchings
Guitar Lessons II
Pencil on paper,
27x20cm
£500



Florence Hutchings

The Vase and its Shadow (Nighttime)

Oil paint, acrylic and collage on canvas

120x100cm,

£4,000

Jane Yates

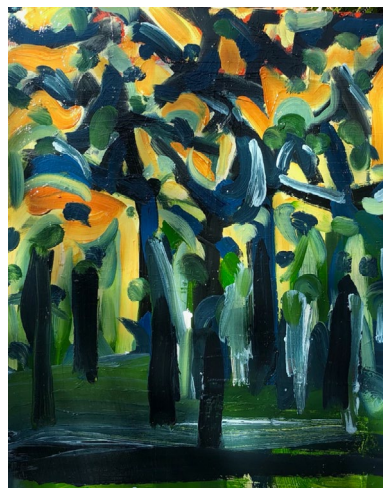




Jane Yates
 Snow Moon
 65cm x 44cm
 2021
 Oil on Wood
 £950



Jane Yates
 Spring Baby!
 43cm x 60cm
 2021
 Oil on Wood
 £950



Jane Yates
 Into the Trees
 64cm x 80cm
 2021
 Oil on Wood
 £1,200



Jane Yates
Underwater Dreams
28cm x 63cm
2021
Oil on Wood
£900



Jane Yates
Whoosh
60cm x 26
2021
Oil on Wood
£900



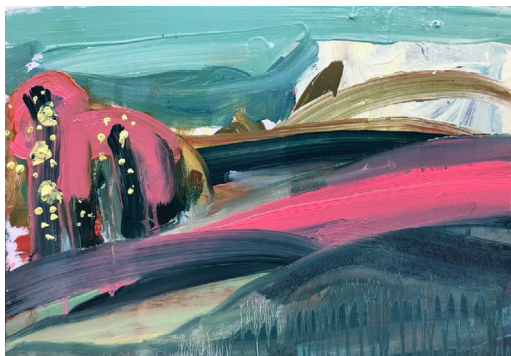
Jane Yates
Balmy Landscape
44cm x 40cm
2021
Oil on Wood
£900



Jane Yates
Autumn Approach
68cm x 32cm
2020
Oil on Wood
£1,200



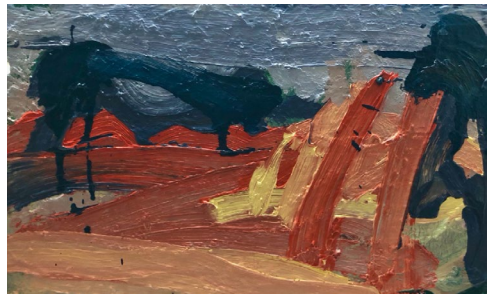
Jane Yates
Wetlands
60cm x 26cm
2021
Oil on Wood
£900



Jane Yates
Garden Blues
40cm x 62cm
2021
Oil on Wood
£1,100



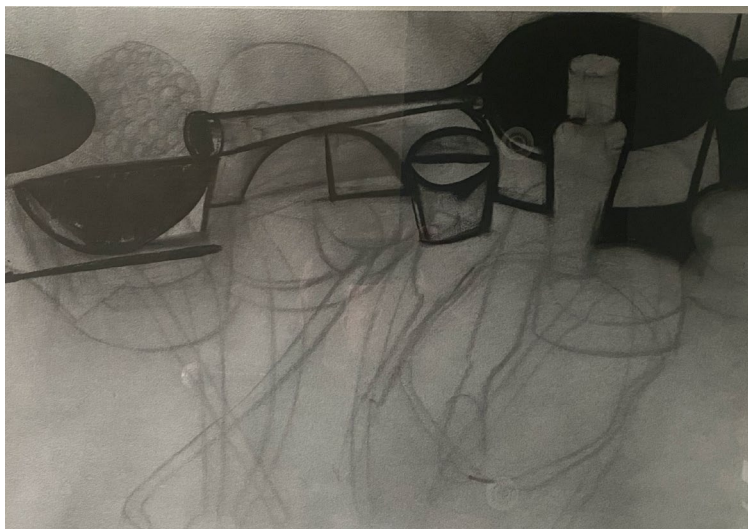
Jane Yates
 Geraniums in the Window
 57cm x 90cm
 2021
 Oil on Wood
 £1,500



Jane Yates
 Autumn Fields
 44cm x 26cm
 2020
 Oil on Wood
 £900

Robert Tilling MBE RI





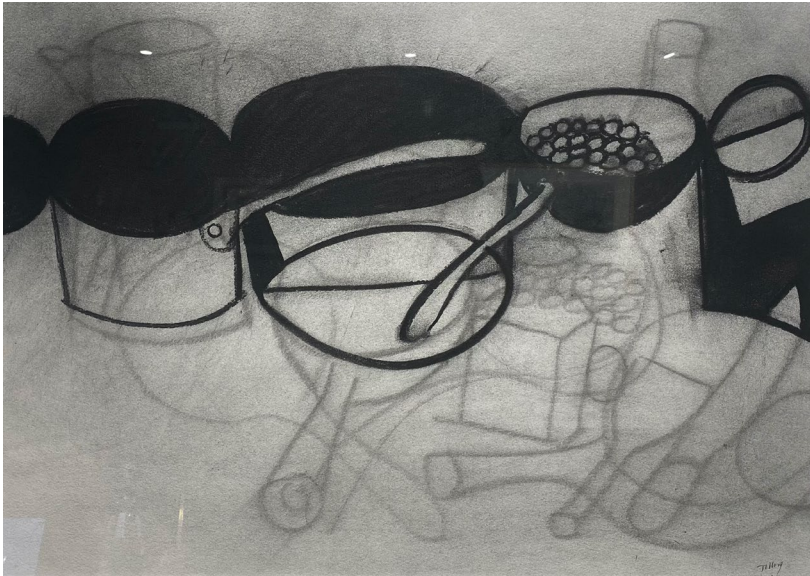
Robert Tilling
Still Life in Kitchen
1998-2008
Charcoal on Paper
66cm x 46cm
Framed
£1,200



Robert Tilling
Still Life in Kitchen
1998-2008
Charcoal on Paper
66cm x 46cm
Framed
£1,200



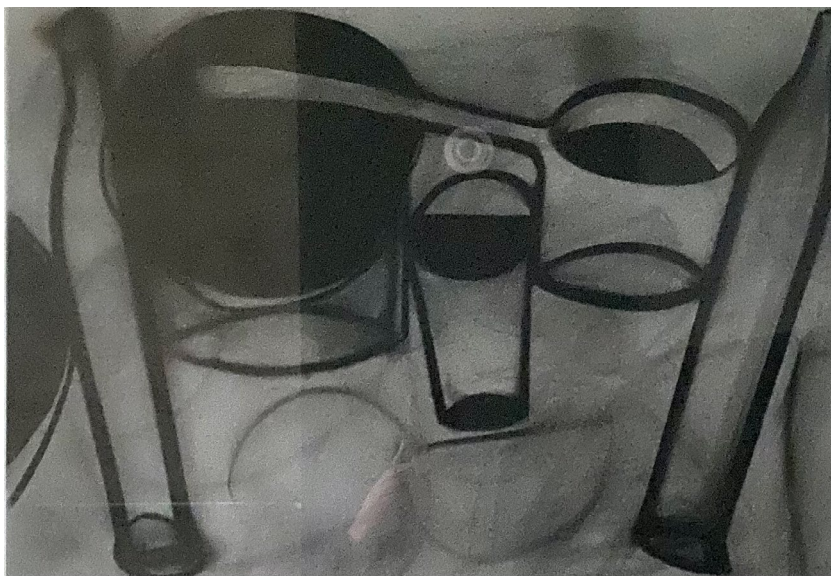
Robert Tilling
Still Life in Kitchen
1998-2008
Charcoal on Paper
66cm x 46cm
Framed
£1,200



Robert Tilling
Still Life in Kitchen
1998-2008
Charcoal on Paper
66cm x 46cm
Framed
£1,200



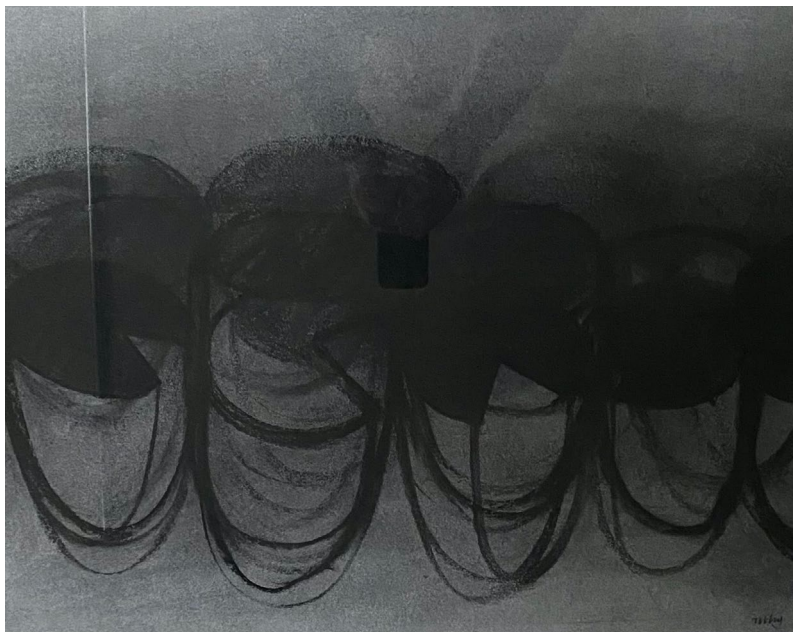
Robert Tilling
Still Life in Kitchen
1998-2008
Charcoal on Paper
66cm x 46cm
Framed
£1,200



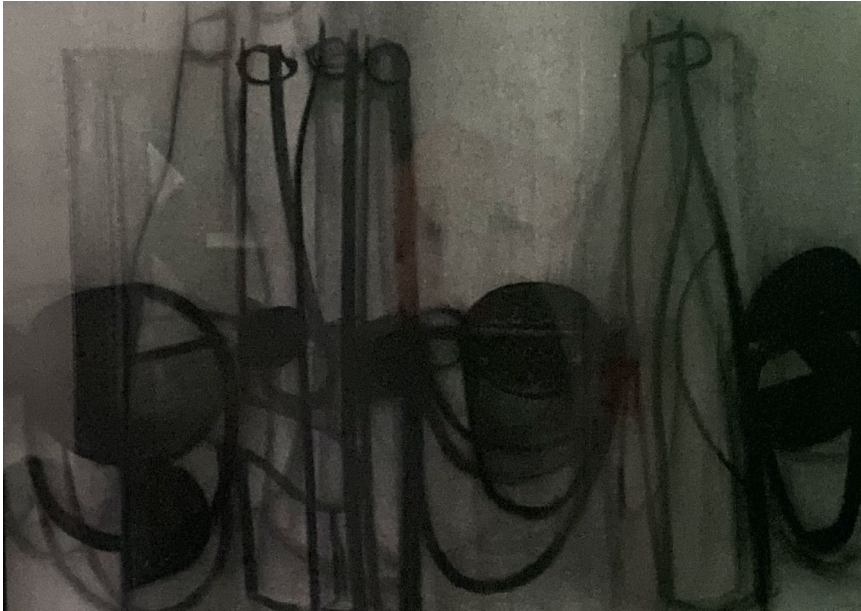
Robert Tilling
Still Life in Kitchen
1998-2008
Charcoal on Paper
66cm x 46cm
Framed
£1,200



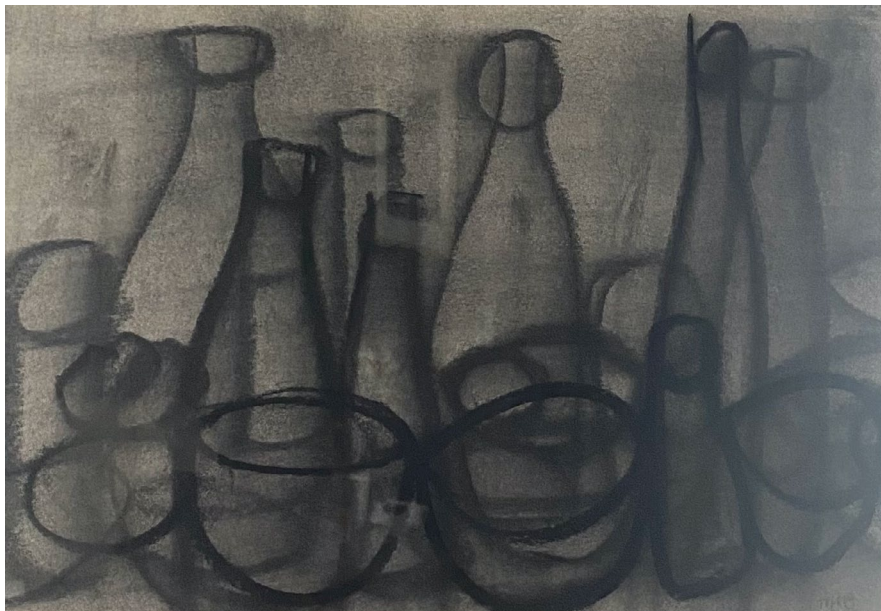
Robert Tilling
Still Life in Kitchen
1998-2008
Charcoal on Paper
66cm x 46cm
Framed
£1,200



Robert Tilling
Still Life in Kitchen
1998-2008
Charcoal on Paper
66cm x 46cm
Framed
£1,200



Robert Tilling
Still Life in Kitchen
1998-2008
Charcoal on Paper
66cm x 46cm
Framed
£1,200



Robert Tilling MBE RI
Still Life Bottles & Glass
1998-2008
Charcoal on Paper
37cm x 26cm Framed
£600

Chris Clifford BA (Hons) MA
Director
www.privateandpublic.com
Sommerville House
Phillips Street
St. Helier
Jersey
JE2 4SW
chris@privateandpublic.com
+44 (0) 1534 859093
+44 (0) 7797 714186
Instagram @private_and_public



OPENING TIMES
14th June-10th July
Weekdays 12pm-6pm
Saturdays 11am-4pm

VIEW ONLINE
privateandpublic.com
3D Virtual Tour
Video Presentation
Digital Catalogue