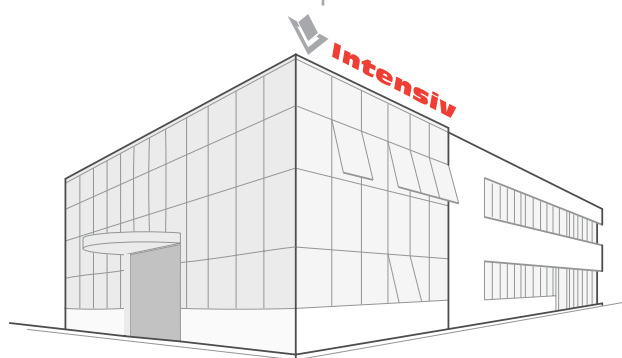
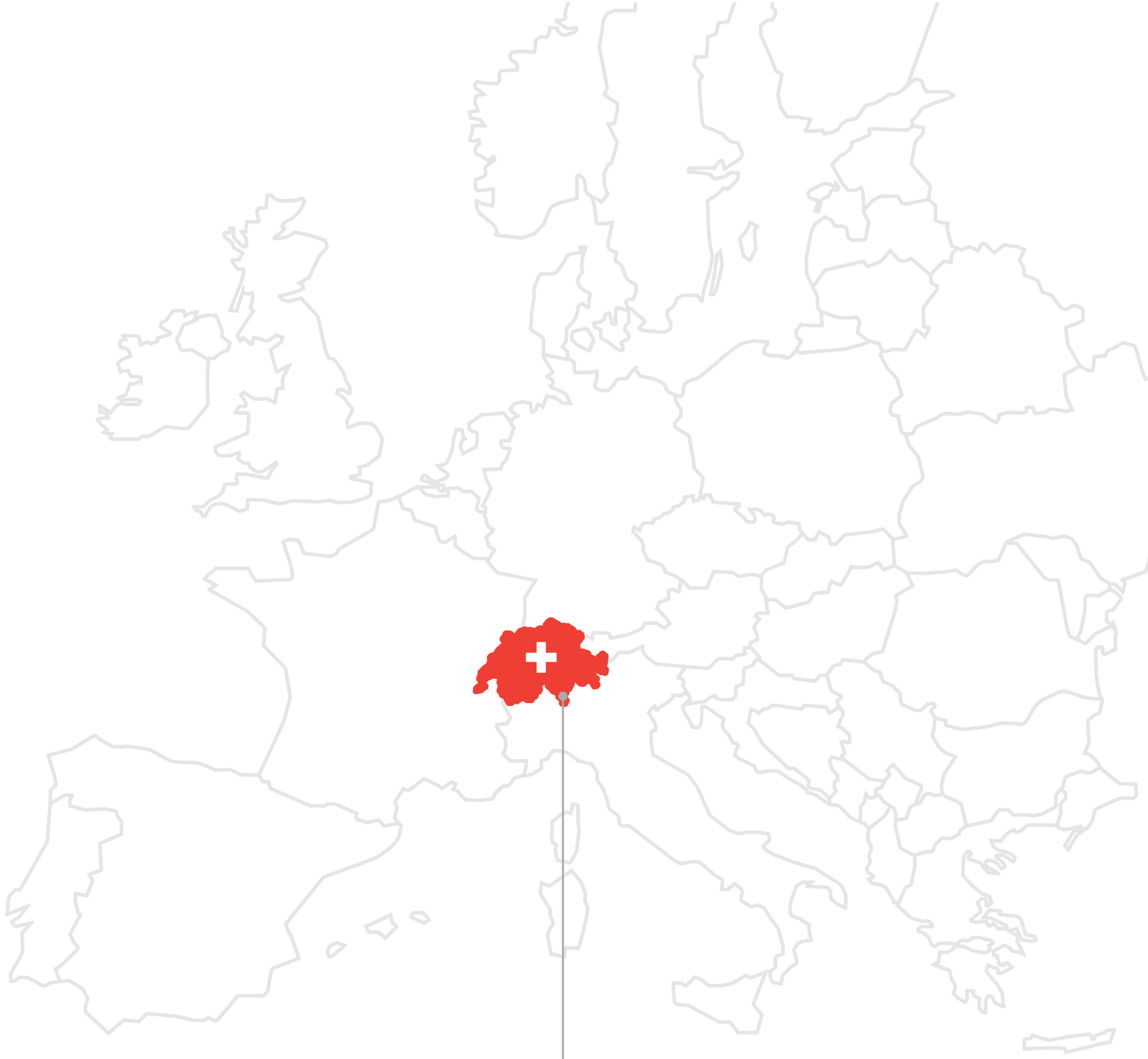


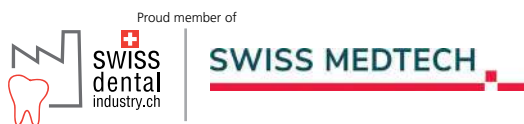
# Catalogue 2025 | Selection

## Intensiv Oscillating Instruments / Intensiv Swingle





Via al Molino 107, CH-6926 Montagnola, Switzerland



# We proudly present the Intensiv Team

## Your product quality expectations are our daily mission.

From acquisition of raw materials through our ambitious industrial processes, the daily task for the Intensiv team is to guarantee constant superior quality products. Our strategy is to achieve excellence in natural diamond abrasives.

We are proud to present the Intensiv 2025 Catalogue with some new products and the confirmation of the long-term existing ones. Intensiv products are clinically approved and scientifically supported by a large international network of dental professional experts. This network leads Intensiv to organise the annual Dental Innovation Congress and several hands-on workshops during the year.



Greetings from the Intensiv team who works everyday with passion and commitment to guarantee the constant superior quality of Intensiv products. Beyond those colleagues presented here, there are many other who contribute to the company's mission.

# Index

## Intensiv Sets

### Conservative Sets

■ Intensiv Minimal Invasive Preparation Set <b>New</b>	10
■ Intensiv Cerinlay Set	11
■ Intensiv Mini Prep Set	12
■ Intensiv Composhape Set 1	13
■ Intensiv Composhape Set Anterior & Posterior	14
■ Intensiv Combi Prep Set: Direct Restauration	15
■ Intensiv Perio Set	16

### Prosthetic Sets

■ Intensiv Guided Universal Prep Set	20
■ Intensiv Sets Direct and Indirect Anterior & Posterior	22
■ Intensiv Advanced Prep & Finishing Set for Cerec Restorations	24
■ Intensiv Universal full Crown and Porcelain Veneer Prep Set	26
■ Intensiv Tooth Caring Bur Set	27
■ Intensiv Modular Veneer Set	28
■ Intensiv Geneva Prep Set	29

## Zircon oxyde Ceramic Cutting

■ Intensiv ZirconCut Prosthetics	30
■ Intensiv Rockle <b>New</b>	32

## Shape chart Intensiv DiaRotary

### Intensiv DiaRotary

■ Ball	34
■ Cone, inverted	36
■ Pear	38
■ Cylinder	40
■ Flame	42
■ Cone	49
■ Torpedo	52
■ Football	64
■ Wheel	68
■ Lenticular	72
■ Special shapes	73
	74

## Cutting Instruments

■ Intensiv Cutting Instruments	80
--------------------------------	----

## Trays

■ Intensiv HygienicTray <b>New</b>	84
■ Intensiv InstrumentTray	85
■ Intensiv ProxoshapeTray	86
■ Intensiv Ortho-StripsTray	87

## Swingle and Oscillating Instruments

### Swingle

- Intensiv Swingle® 90
- Intensiv Swingle® SWISS EDITION 91

### Oscillating Instruments

- Intensiv Proxoshape 92
- Intensiv Proxoshape Flexible 94
- Intensiv Bevelshape 95

## Instruments for orthodontics

- Intensiv Ortho-Strips® System 98
- Intensiv Ortho-Strips® System, Central 100
- Intensiv Ortho-Strips® Sets **New** 102
- Intensiv IPR-DistanceControl 103
- Intensiv ApproxOpener 103

## Finishing and Polishing

- Intensiv PrepTwins 106
- Intensiv ProxoStrip 108
- Intensiv ProxoStrip Plus 108
- Intensiv ProxoStrip Anterior 109
- Intensiv ProxoContour Coarse 109
- Intensiv ProxoPolish 110
- Intensiv UniglossPaste 111
- Intensiv UniglossPolisher 111

## Accessories

- Intensiv DiaTweezer **New** 114
- Intensiv PerioDiaCurette 115
- Intensiv ApproxOpener 115

- Recommendations for Intensiv Diamond Instruments 116
- Intensiv table structure 117
- Intensiv code index 118



# Swingle and Oscillating Instruments



## Swingle

Intensiv Swingle <sup>®</sup> Pat. EP 2754406B1 .....	90
Intensiv Swingle <sup>®</sup> SWISS EDITION PAT. EP 2754406B1 .....	91

## Oscillating Instruments

Intensiv Proxoshape .....	92
Intensiv Proxoshape Flexible .....	94
Intensiv Bevelshape .....	95

# Intensiv Swingle® Pat. EP 2754406B1

Reciprocating contra-angle handpiece with micromechanical dual function (axially free-rotating / axially fixed position of the oscillating instruments)

Efficient use of a reciprocating contra-angle handpiece requires a choice between the axially fixed position and the free axial rotation of the oscillating instruments during the same treatment. The 2:1 reduction of rotation results in an efficient stroke movement of 20,000 times per minute when used with micromotors with 40,000 rounds per minute (rpm).



REF WG-69 LT  
(with light)

REF WG-69 A  
(without light)



A simple to move toggle switch at the contra-angle head permits to choose between axially free rotating or axially fixed instruments.

## Product Description

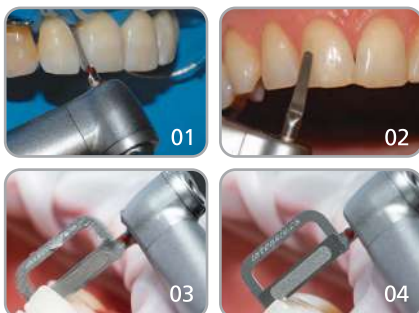
### DUAL INTENSIV SWINGLE CONTRA-ANGLE

The dual contra-angle handpiece Intensiv Swingle, type EVA, is used for the application of oscillating instruments Intensiv Ortho-Strips, Intensiv Proxoshape and Intensiv Bevelshape.

- Reciprocating contra-angle handpiece with integrated water spray and optional with light
- Stroke movement 0.9 mm
- 20,000 oscillating stroke movements at 40,000 rpm
- With toggle switch to select axially free-rotating or fixed position of the oscillating instruments
- Axially free-rotating files and strips are used to finish and polish prepared surfaces. Contoured surfaces are maintained
- Axially fixed positions of the files and strips are used for required fixed positioning of the files and strips for removing excess (files), opening contact points (strips) and for enamel reduction in orthodontics (strips).

## Indications

- Swingle: for oscillating instruments with oscillating movement
- Swingle/Proxoshape: Precise minimally invasive preparation and margin finishing
- Swingle/Proxoshape: Fast and efficient excess removal, finishing and polishing of restorations
- Swingle/Ortho-Strips: Approximal enamel reduction, IPR, in orthodontics



01, 02) Dr. Simona Giani, Varese, Italy  
03, 04) Dr. Francesco Garino, Turin, Italy

## Benefits

- Two applications in a contra-angle handpiece: free axial rotation or fixed axial position of inserted instruments
- Versatile use, for oscillating instruments in restorative and orthodontics (interproximal reduction)
- 20,000 oscillating stroke movements per minute for improved abrasion efficiency

## Clinical pictures

- 01 Interproximal finishing with Intensiv Swingle and Intensiv Proxoshape PS2
- 02 Finishing of vestibular surface with Intensiv Proxoshape PS2 and Intensiv Swingle
- 03 Enamel reduction in orthodontics (IPR) with Intensiv Ortho-Strips System, Central, red, 40 µm
- 04 Beneficial interproximal insertion with Intensiv Ortho-Strips System, Central, free of diamond coating at the edge

# Intensiv Swingle<sup>®</sup> Pat. EP 2754406B1

## SWISS EDITION

Reciprocating contra-angle handpiece with micromechanical dual function (axially free-rotating / axially fixed position of the oscillating instruments) - Durable, refined and efficient, including additional service package

Efficient use of a reciprocating contra-angle handpiece requires a choice between the axially fixed position and the free axial rotation of the oscillating instruments during the same treatment. Intensiv Swingle SWISS EDITION with a better grip design and a scratch and wear-resistant glass-coating. This special coating provides the contra-angle handpiece with long lasting protection against scratched surfaces.



## Product Description

### DUAL INTENSIV SWINGLE CONTRA-ANGLE

- Better grip design of the contra-angle handpiece
- Special coating provides lasting protection against scratched surfaces
- Reciprocating contra-angle handpiece with integrated water spray and optional light
- Stroke movement 0.9 mm
- 20,000 oscillating stroke movements at 40,000 rpm
- With toggle switch to select axially free-rotating or fixed position of the oscillating instruments
- 12 axially fixed positions within 360°

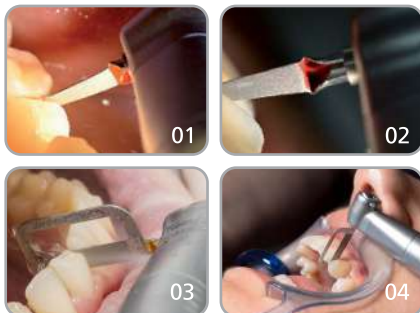
A toggle switch on the contra-angle head allows you to choose between axially free-rotating or axially fixed oscillating instruments.



Toggle switch fixed downwards: oscillating instruments in axially fixed position  
Toggle switch fixed upwards: axially free-rotating oscillating instruments.

## Indications

- Swingle: for oscillating instruments with oscillating movement
- Swingle/Proxoshape: Precise preparation and margin finishing
- Swingle/Proxoshape: Fast and efficient excess removal, finishing and polishing of restorations
- Swingle/Ortho-Strips: Approximal enamel reduction, IPR, in orthodontics



01-02) Dr. A. Devigus, Bülach, Switzerland  
03-04) Dr. F. Garino, Turin, Italy

## Benefits

- Lasting integrity of the contra-angle's surface, thanks to the scratch resistant and durable special coating
- 20.000 oscillations per minute for better use performance of files
- 3 year Warranty including one maintenance service

## Clinical pictures

- 01 Approximal finishing with Intensiv Swingle SWISS EDITION and Intensiv Proxoshape Flexible, red, 40 µm
- 02 Finishing of margins with Intensiv Swingle SWISS EDITION and Intensiv Proxoshape Flexible, red, 40 µm
- 03 Approximal contact point opening with Intensiv Swingle SWISS EDITION and Ortho-Strips System, orange, 8 µm
- 04 Approximal enamel reduction with Intensiv Swingle SWISS EDITION and Ortho-Strips System, Central, red, 40 µm

# Intensiv Proxoshape

Oscillating diamond-coated files for the removal of overhangs and finishing of proximal filling surfaces

Perfectly adapted and polished proximal filling surfaces and crown margins are a prerequisite for the maintenance of the health of the periodontium and the prevention of secondary caries. Proxoshape meets the requirements to correctly model the filling surfaces and margins and prepares them for the high gloss finish.



## Product Description

Intensiv Proxoshape:

- 6 one-sided diamond coated files in 6 grits: 125, 90, 50, 40, 15 and 8  $\mu\text{m}$ , 8.5 mm
- 4 files with extended working surface, 90, 50, 40, 15  $\mu\text{m}$ , 11 mm
- 1 distal diamond-coated file, 15  $\mu\text{m}$ , 3 mm

Intensiv Proxoshape Coarse:

- One-sided diamond coated and perforated file, in 80  $\mu\text{m}$ , 2 rows of perforation



FILE THICKNESS  
**0.2 mm**

All Intensiv Proxoshape are available in packages of 3 or 6 pcs

Intensiv Proxoshape Set, REF 100  
1 pcs of PS0, PS1, PS2, PS3

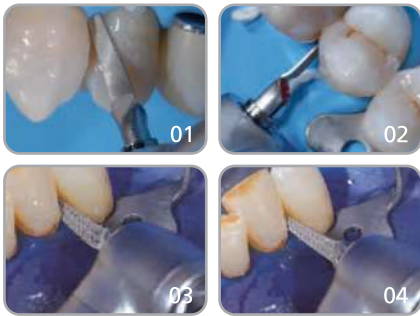
## Indications

- Removal of: Filling and cement overhangs
- Finishing and trimming of: proximal crown margins in gold or ceramic
- Contouring and finishing of: proximal restoration surfaces

## Benefits

- Easier access to the interproximal space
- No iatrogenic damage to adjacent teeth
- Prevention of surface wave generation caused by rotating instruments

01, 02) University of Brescia, Italy  
 03, 04) Dr. A. Devigus, Bülach, Switzerland



## Clinical pictures

- 01 Interproximal restoration finishing with file PS2
- 02 Treatment of the zone underneath the reconstructed contact points without damaging the neighbouring teeth with the PS3 file
- 03 Modeling with PSC80
- 04 Modeling with PSC80

Colour code	Micron	Description
534	125 µm	Coarse
524	90 µm	Standard
524	80 µm	Medium
514	50 µm	Golden Burs GB
524	60 µm	Medium
514	40 µm	Fine
504	15 µm	Extra fine
494	8 µm	Ultra fine

## Intensiv Swingle® Pat. EP 2754406B1

The unique reciprocating contra-angle handpiece with both functions in one contra-angle handpiece: free axial rotation and fixed axial position. Intensiv Swingle is calibrated for all Intensiv mechanical oscillating instruments such as Intensiv Proxoshape, Bevelshape and Ortho-Strips. The Intensiv Swingle corresponds to a "type EVA" contra-angle handpiece, but with patented dual function of the instrument positions.

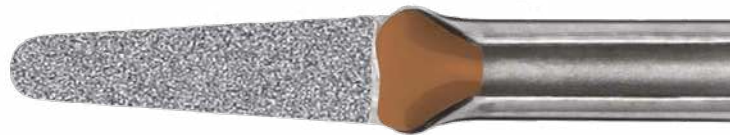
See  
page  
90

# Intensiv Proxoshape Flexible

Oscillating diamond-coated files for the removal of excess material and contouring of restored proximal surfaces

The contouring in aesthetic restorations in proximal zones is necessary to achieve an ideal morphology of the restoration. Appropriate instruments are required, which adapt perfectly to restoration surfaces while avoiding iatrogenic damage to adjacent tooth.

The Intensiv Proxoshape Flexible file is, due to its minimal file thickness of 0.1mm, so thin that difficult to access interdental spaces can be treated. In addition, the thin file is sufficiently flexible to adapt to the partially concave surfaces.



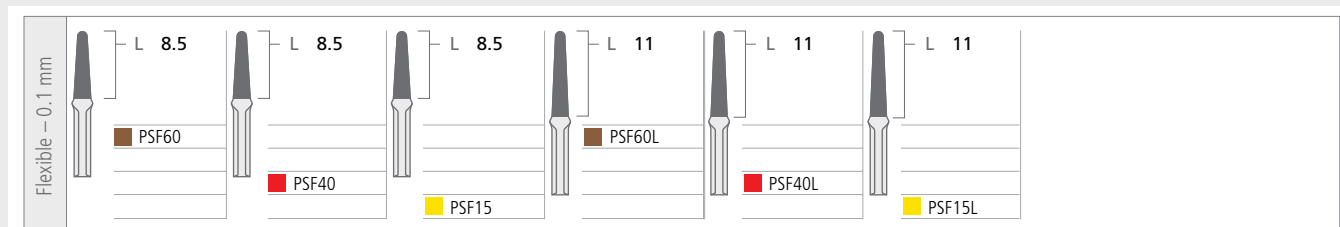
## Product Description

Intensiv Proxoshape Flexible:

- 3 single-sided diamond files in 60, 40 and 15  $\mu\text{m}$
- 2 file lengths: 8.5 mm and 11 mm

Intensiv Proxoshape Flexible Set, REF 110  
Content 6 limes: PSF60, PSF40, PSF15, PSF60L, PSF40L, PSF15L

FILE THICKNESS  
**0.1 mm**



## Indications

- Finishing and polishing of aesthetic restorations with difficult to access proximal areas
- Excess (filling-cements, overhangs) removal on restoration surfaces

University of Zurich, Switzerland



## Benefits

- Simplified access to the interdental space
- Improved adaptation to the proximal filling morphology
- No iatrogenic damage to adjacent tooth due to one side diamond coating
- Prevention of irregular surface waves created by use of rotating instruments

## Clinical pictures

- 01 Finishing of the cervical margin with the PSF40L file
- 02 Finishing the interproximal restoration with the PSF15L file

# Intensiv Bevelshape

Oscillating diamond files for perfect bevelled edges and preparation margins

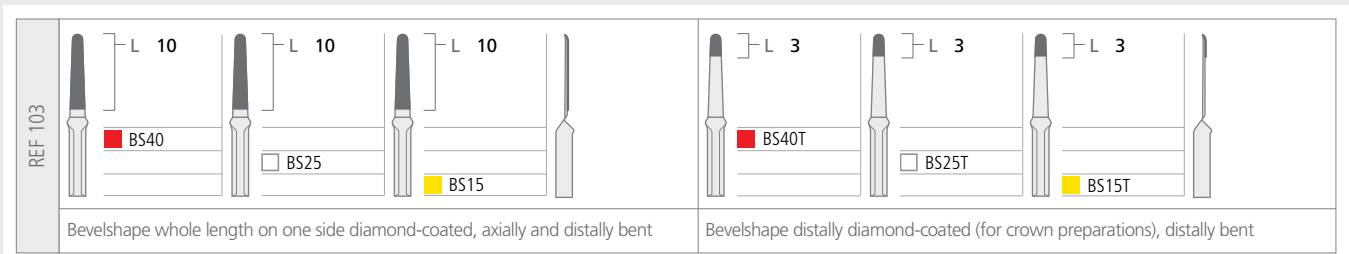
A key factor for an ideal cavity preparation for composite fillings, gold inlays and overlays is a precise margin bevelling with sharp edges. The single-side diamond coating helps to prevent iatrogenic damage to adjacent teeth and injury to periodontal tissue.



## Product Description

- Axially curved files with distally bent ends
- 3 files diamond-coated over the entire convex working length in grits 40, 25, 15 µm
- 3 files diamond-coated over the convex distal end only in grits 40, 25 and 15 µm

REF 103, Intensiv Bevelshape Set.  
All Intensiv Bevelshape are available in packages of 3 or 6 pcs



## Indications

- Margin bevelling for anterior composites, composite slots, inlays and overlays
- Margin finishing in veneer preparations
- Crown preparations
  - Margin finishing in chamfer preparation
  - Bevelling in shoulder preparation

University of Zurich, Switzerland



## Benefits

- Polished and clearly outlined profiles with perfect sharp cut edges
- No microfractures and no accidental chipping of dental enamel prisms
- Prevention of enamel defects and grooves on the preparation margin

## Clinical pictures

- 01 The file allows the bevelling of a cervical shoulder
- 02 Margin finishing in veneer preparation with BS40 or BS40T
- 03 Margin bevelling in class IV restorations

## Intensiv Swingle® Pat. EP 2754406B1

The unique reciprocating contra-angle handpiece with both functions in one contra-angle handpiece: free axial rotation and fixed axial position. Intensiv Swingle is calibrated for all Intensiv mechanical oscillating instruments such as Intensiv Proxoshape, Bevelshape and Ortho-Strips.

The Intensiv Swingle corresponds to a "type EVA" contra-angle handpiece, but with patented dual function of the instrument positions.

See page 90



# Instruments for Orthodontics



Intensiv Ortho-Strips® System .....	98
Intensiv Ortho-Strips® System, Central <small>PAT. EP115201863.6</small> .....	100
Intensiv Ortho-Strips® Sets .....	102
Intensiv IPR-DistanceControl .....	103
Intensiv ApproxOpener .....	103

# Intensiv Ortho-Strips® System



Oscillating diamond strips for the double-sided or one-sided interdental reduction of the tooth size in orthodontics

When opening the interdental space and reducing, finishing and polishing enamel in orthodontics, care must be taken to avoid grooves and scratches. It is also important to proceed systematically, following a coarse-to-fine sequence in selecting grits. Unlike manual strips, the Intensiv Ortho-Strips System provides rapid, controlled enamel reduction followed by polishing without unnecessary removal of healthy tooth substance.



## Product Description

- Flexible strips, double-sided or one-sided diamond coating
- 6 different grits:
  - 08 µm, orange, opening
  - 40 µm, red, contoured reduction
  - 60 µm, brown, fast reduction
  - 80 µm, blue, very fast reduction
  - 25 µm, white, finishing
  - 15 µm, yellow, polishing
- Sterilizable

Intensiv Ortho-Strips System, Double-Sided, assortment of 6 strips, REF OSSet02/6

- OS08OP-DS, OS40M-DS, OS60C-DS, OS80XC-DS, OS25F-DS, OS15POL-DS

Intensiv Ortho-Strips System, Left-Sided, assortment of 6 strips, REF OSSet02L/6

- OS08OP-L, OS40M-L, OS60C-L, OS80XC-L, OS25F-L, OS15POL-L

Intensiv Ortho-Strips System, Right-Sided, assortment of 6 strips, REF OSSet02R/6

- OS08OP-R, OS40M-R, OS60C-R, OS80XC-R, OS25F-R, OS15POL-R

Intensiv Ortho-Strips System, Opener

- Strip with serrated edge and ultra-fine 8µm grit to open contact points without friction



## Indications

- Opening of the interdental contact points
- Widening of the interdental spaces in orthodontics by bilateral or unilateral tooth size reduction
- Elimination of minor crowding and treatment finishing in orthodontics
- Bilateral proximal enamel polishing

## Benefits

- Efficient opening of the interdental contact points
- Rapid and controlled enamel reduction
- Proximal contouring, finishing and polishing of both adjacent teeth in a single procedure
- Reusable

Dr. Francesco Garino, Turin, Italy

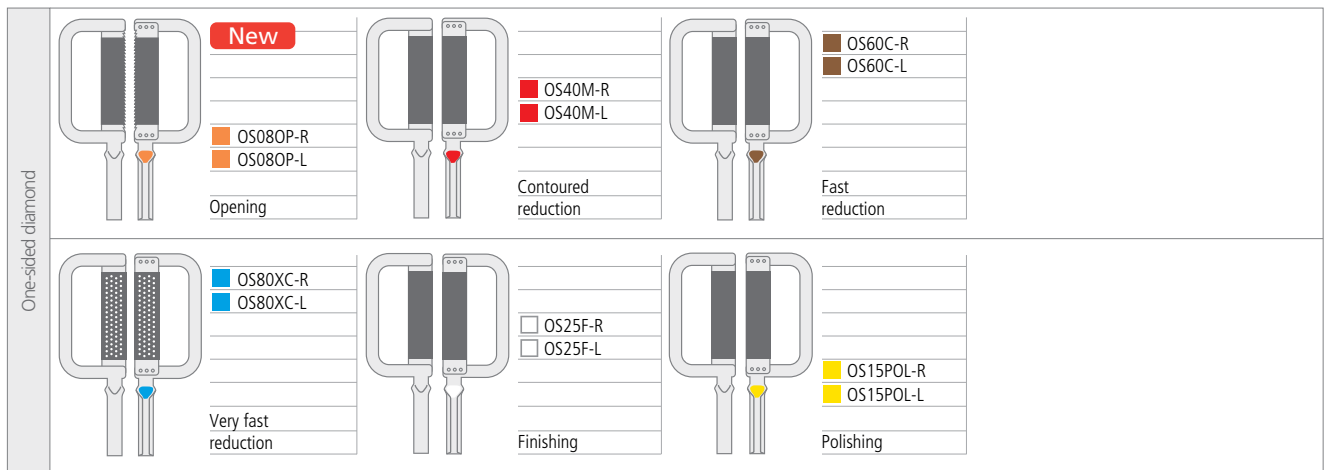
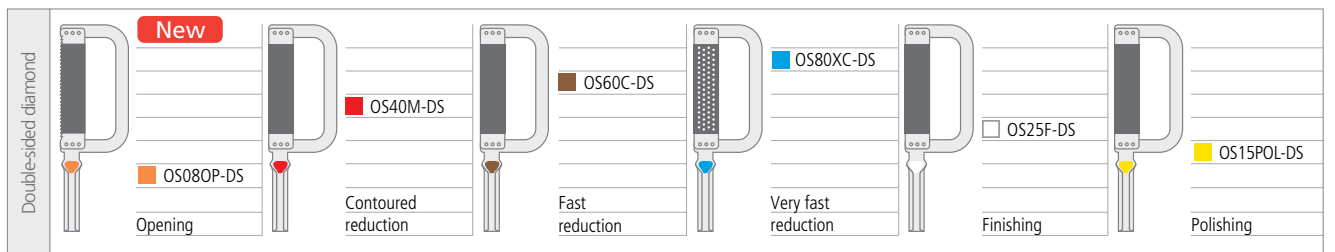
## Clinical pictures



- 01 Opening of the interdental space with OS08OP-DS, Opener, 8 µm
- 02 Contoured reduction with OS40M-DS, Medium, 40 µm
- 03 Fast reduction with OS60C-DS, Coarse, 60 µm
- 04 Very fast reduction of enamel with OS80XC-DS, Extracoarse, 80 µm
- 05 Controlled finishing with OS25F-DS, Fine, 25 µm
- 06 Polishing with OS15POL-DS, Polishing, 15 µm

Colour code	Micron	Description
<span style="color: blue;">■</span> 524	80 µm	Extracoarse
<span style="color: brown;">■</span> 524	60 µm	Coarse
<span style="color: red;">■</span> 514	40 µm	Medium
<span style="color: white;">■</span> 514	25 µm	Fine
<span style="color: yellow;">■</span> 504	15 µm	Polishing
<span style="color: orange;">■</span> 494	8 µm	Opener

Diamond-coated:  
DS = Double-Sided  
L = Left  
R = Right



Intensiv Ortho-Strips Double-Sided and One-Sided are available in packages of 3, 6 or 12 pcs.

# Intensiv Ortho-Strips® System, Central Pat. EP15201863.6

Innovative oscillating strips,  
with central diamond-coated operative area

Thanks to the diamond coating in the central operating area. Intensiv Ortho-Strips System, Central allows for high precision in the approximal reduction, finishing and polishing of enamel, respecting the original morphology and dental tissue. During the process of enamel reduction, trimming and polishing in orthodontics (stripping), parts of enamel or dentine below the tooth equator may be removed unintentionally, which may cause subsequent hypersensitivity of the tooth in the patient.



## Product Description

- Oscillating strips, with diamond-coated operative central area
- 4 different grits:
  - 60 µm, brown, reduction
  - 40 µm, red, contouring
  - 25 µm, white, finishing
  - 15 µm, yellow, polishing
- Strip thickness of the not diamond-coated area: 0.05 mm
- Total height of strip: 3.7 mm
- Diamond area height: 2.7 mm
- Diamond area length: 13 mm
- Sterilizable

Intensiv Ortho-Strips System, Central, Double-Sided,  
are available in packages of 3 pcs:

OS60C-CEN-DS/3  
OS40M-CEN-DS/3  
OS25F-CEN-DS/3  
OS15POL-CEN-DS/3

Or as Set of 6pcs each one article:  
REF OSSetCEN02/6, Intensiv Ortho-Strips System OP, XC  
& 4 Central Double-Sided

Intensiv Ortho-Strips System, Central, One-Sided,  
are available in packages of 3 pcs:

OS60C-CEN-L/3  
OS40M-CEN-L/3  
OS25F-CEN-L/3  
OS15POL-CEN-L/3  
OS60C-CEN-R/3  
OS40M-CEN-R/3  
OS25F-CEN-R/3  
OS15POL-CEN-R/3

Or as Set of 6pcs each one article, Left-Side or Right-Side:  
OSSetCEN02L/6, Intensiv Ortho-Strips System OP, XC  
& Central Left-Sided  
OSSetCEN02R/6, Intensiv Ortho-Strips System OP, XC  
& Central Right-Sided

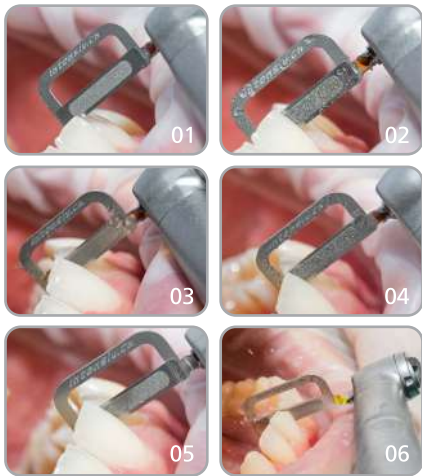
## Indications

- Reduction, finishing and polishing of approximal enamel in orthodontics

## Benefits

- Easy introduction into the interdental contact points
- Prevention of cervical steps
- Dentine hypersensitivity would not be supported
- Conservation of the original morphology of the tooth equator
- Reusable

Dr. Francesco Garino, Turin, Italy



## Clinical pictures

- 01 Easy introduction of the strip thanks to the diamond coating-free lower edge
- 02 Prevention of cervical steps thanks to the non-diamond coated lower edge of the strip
- 03 Enamel contoured reduction with Intensiv Ortho-Strips System, Central, Medium, 40 µm
- 04 Enamel fast reduction with Intensiv Ortho-Strips System, Central, Coarse, 60 µm
- 05 Controlled finishing of the treated enamel with Intensiv Ortho-Strips System, Central, Fine, 25 µm
- 06 Polishing of the treated enamel with Intensiv Ortho-Strips System, Central, Polishing, 15 µm

Colour code	Micron	Description
524	60 µm	Coarse
514	40 µm	Medium
514	25 µm	Fine
504	15 µm	Polishing

Diamond-coated:  
DS = Double-Sided  
L = Left  
R = Right

# Intensiv Ortho-Strips® Sets

New

## Set for Interproximal Reduction

Intensiv Ortho-Strips Tray 400 Set is for the aligner treatment. It also contains the new, patented Intensiv Ortho-Strips System, Central. Thanks to the diamond coating in the central operating area, the Intensiv Ortho-Strips System, Central allows for high precision in the approximal reduction, finishing and polishing of enamel, respecting the original morphology and dental tissue.



REF OST400Set01/6



REF OST400Set02/6



REF OST400Set03/6

## Product Description

### REF OST400Set01/6

- 1 Intensiv Ortho-Strips Tray REF OST400
- 1 Intensiv Ortho-Strips System, Opener, REF OS08OP-DS
- 2 Intensiv Ortho-Strips System, Central, Medium, REF OS40M-CEN-DS
- 1 Intensiv Ortho-Strips System, Central, Coarse, REF OS60C-CEN-DS
- 1 Intensiv Ortho-Strips System, Central, Fine, REF OS25F-CEN-DS
- 1 Intensiv Ortho-Strips System, Central, Polishing, REF OS15POL-CEN-DS

### EXTENDED

Opening (orange), contoured reduction (red) and fast reduction (brown), finishing (white), polishing (yellow)

### REF OST400Set02/6

- 1 Intensiv Ortho-Strips Tray REF OST400
- 1 Intensiv Ortho-Strips System, Opener, REF OS08OP-DS
- 1 Intensiv Ortho-Strips System, ExtraCoarse, REF OS80XC-DS
- 1 Intensiv Ortho-Strips System, Central, Coarse, REF OS60C-CEN-DS
- 1 Intensiv Ortho-Strips System, Central, Medium, REF OS40M-CEN-DS
- 1 Intensiv Ortho-Strips System, Central, Fine, REF OS25F-CEN-DS
- 1 Intensiv Ortho-Strips System, Central, Polishing, REF OS15POL-CEN-DS

### COMPLETE

Opening (orange), contoured reduction (red) and fast reduction (brown), very fast reduction (blue), finishing (white), polishing (yellow)

### REF OST400Set03/6

- 1 Intensiv Ortho-Strips Tray REF OST400
- 2 Intensiv Ortho-Strips System, Opener, REF OS08OP-DS
- 3 Intensiv Ortho-Strips System, Central, Medium, REF OS40M-CEN-DS
- 1 Intensiv Ortho-Strips System, Central, Polishing, REF OS15POL-CEN-DS

### STANDARD

Opening (orange), contoured reduction (red), polishing (yellow)

## Indications

- Set03: Ortho-Strips standard protocol; opening, reducing/measuring and polishing
- Set02: Ortho-Strips Complete selection
- Set01: Ortho-Strips standard protocol incl. 60µm (brown) for faster abrasion and 25µm (white) for subsequent finishing

## Benefits

- Arrangement of Intensiv Ortho-Strips during Orthodontic stripping procedures
- Easy introduction into the interdental contact points
- Prevention of cervical step formation
- Dentine hypersensitivity would not be supported

# Intensiv IPR-DistanceControl

Manual stainless steel instrument to support the control of tooth distances created during IPR protocols

## Indications

- Support for the control of the teeth distance in the various stages of the IPR technique in orthodontics.

## Benefits

- Secure application due to the handle
- Support thanks to the different thicknesses
- Large number of controls of distances, thanks to the combination of 8 instruments

Dr. Francesco Garino, Turin, Italy



## Product Description

- Intensiv IPR-DistanceControl is a manual metal instrument
- It consists of an eight-part instrument set made of stainless steel with grip (fingergrip)
- The thickness indication is marked on each instrument
- Removable plastic rivet to secure the 8 instruments
- Height / Length of metallic element (excl. grip): 4 / 40 mm



REF IPR-DC Set

# Intensiv ApproxOpener

Serrated diamond coated metal strip for manual opening of tight contact points in Orthodontics

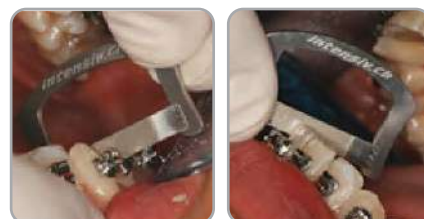
## Indications

- Manual approximal opening of tight contact points in orthodontic treatments (stripping)

## Benefits

- Frictionless application between contact points thanks to ultra-fine grain size and serrated edge
- Calibrated opening for application of the stripping method
- Safe application due to arch tension

Dr. Francesco Garino, Turin, Italy



## Product Description

Diamond coated metal strip clamped into a small metal bow; in 2 versions:

- Serrated and one-sided diamond coating (8µm), thickness approx. 0.09 mm
- Serrated and double-sided diamond coating (8µm), thickness approx. 0.10 mm
- Height of strip: 4 mm
- Length of strip: 20 mm



REF AO2018DS/3 Double Sided  
REF AO2018OS/3 One Sided





