



**MODULAR  
FRAMES**

VERSATILE, SUSTAINABLE, EFFICIENT



# INTRODUCTION

Severfield plc is the largest specialist structural steelwork Group in the UK. Our dedicated division, Severfield Modular Solutions, specialises in large-scale manufacturing of both simple and complex modular frames.

Modern Methods of Construction (MMC) provides a faster and more efficient alternative to traditional building methods. By leveraging steel frames, we ensure enhanced structural stability, making our modular solutions a reliable choice for various projects.



## WHAT ARE MODULAR FRAMES?

Modular frames are the skeleton that supports modular buildings. These frames are designed to be adaptable and are often used in a variety of construction projects, enhancing both project acceleration and efficiency.

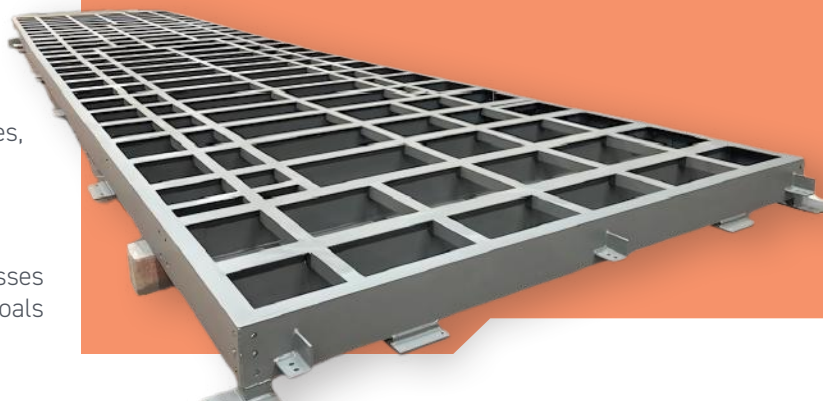


## KEY FEATURES OF SEVERFIELD MODULAR FRAMES

- **Versatility:** Our modular frames are adaptable to a wide range of projects and sectors.
- **Sustainability:** We utilise environmentally friendly practices, ensuring our solutions contribute to sustainable building efforts.
- **Efficiency:** Our streamlined fabrication construction processes can reduce project timelines, helping clients achieve their goals faster.

## BUILD THE FUTURE WITH SEVERFIELD MODULAR SOLUTIONS

- **Cost-Effectiveness:** Our modular solutions can offer potential savings in both labour and materials.
- **Speed and Scale:** With the capability to produce up to 12 frames per day, we can meet large-scale demands quickly.
- **In-House Production:** Utilising our both hot rolled and cold formed steel, we maintain high quality and efficiency in every project.
- **Storage:** Our extensive facilities include 170,000 sq ft of factory space and a 250,000 sq ft storage yard, allowing us the ability to build frames in advance and store them for immediate call-off when needed.
- **Flexible Delivery Options:** We provide delivery in various formats—stick, cassette, or 3D cube—tailored to client preferences.
- **Group Capacity:** As a large company, Severfield has the resources and expertise to handle projects of any size.







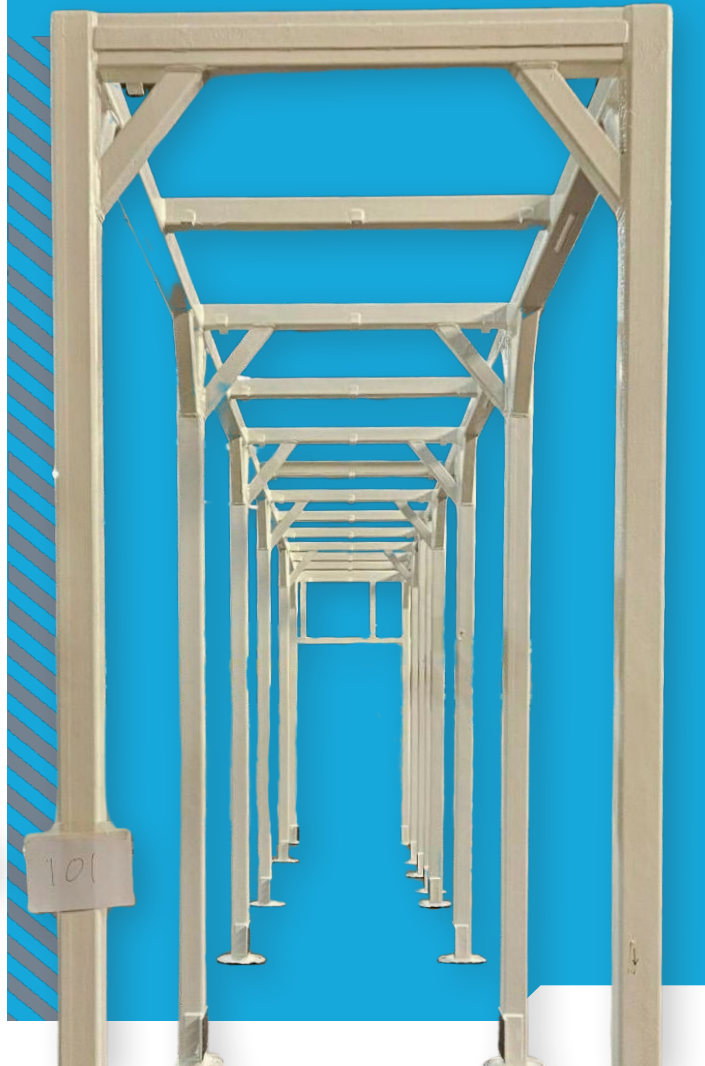
SCAN THE  
QR CODE TO  
FIND OUT MORE




## APPLICATIONS

Our modular frames are utilised across a variety of industries, including:

- Commercial
- Industrial
- Residential
- Healthcare
- Education
- Defence
- Public
- Offshore
- And more...





Severfield  
**MODULAR  
FRAMES**

Explore more about our solutions on our website:

[www.severfield.com/products/modular-frames](http://www.severfield.com/products/modular-frames)

Follow us on social media for updates and insights.

Elevate your construction projects with Severfield Modular Solutions—where quality, efficiency, and ingenuity come together to build the future.

### **CONTACT INFORMATION**

For enquiries and further information about our modular frames, please contact:

#### **BRAD SIMMONS**



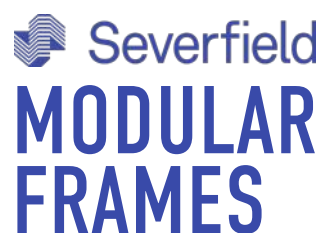
Email: [brad.simmons@severfield.com](mailto:brad.simmons@severfield.com)



Phone: (+44) 07800627635



[www.severfield.com](http://www.severfield.com)



SCAN THE  
QR CODE TO  
FIND OUT MORE