

2025  
UX





MADE FOR THE  
MODERN EXPLORER

Engineered to fit in. Designed to stand out. The versatile UX Hybrid line conquers city streets with nimble handling and two daring F SPORT models. And with its all-new powertrain, this is our most powerful UX yet.



## STYLES

UX shown in Nori Green Pearl (left), UX Premium shown in Iridium<sup>4</sup> (middle), UX F SPORT Handling shown in Ultra White<sup>4</sup> (right)

### UX 300h FWD / AWD

- 43 MPG (FWD) combined EPA estimate<sup>1</sup>
- EV drive mode<sup>2</sup>

### UX 300h PREMIUM

- Heated and ventilated front seats
- Power Rear Door with Kick Sensor<sup>3</sup>

### UX 300h F SPORT DESIGN

- Exterior upgrades, including color-keyed overfenders and 18-inch wheels
- F SPORT grille and Dark Chrome-finished surround

### UX 300h F SPORT HANDLING

- Exclusive F SPORT-tuned suspension
- F SPORT heated steering wheel and shift knob



## DESIGN

UX Premium shown with Palomino NuLuxe® interior trim

MANY VEHICLES FIT FIVE.  
BUT HOW MANY FIT YOU?

With versatile cargo storage options and ample cabin space to fit everything and everyone, the UX Hybrid is always ready for the unexpected.



## DESIGN

UX F SPORT Handling shown in Ultra White<sup>4</sup>



- Color-keyed overfenders (Premium and F SPORT models)
- Available black contrast roof (F SPORT models)
- F SPORT front seats with enhanced bolsters (F SPORT Handling)

- Available heated and ventilated front seats
- Available *washi* interior trim. This unique trim is crafted to mimic the soft grain of Japanese paper.

Learn more at [lexus.com/UXDesign](https://lexus.com/UXDesign)



PERFORMANCE

UX F SPORT Design shown in Ultra White\*

PLANS CAN TURN ON A DIME.  
NOW, SO CAN YOU.

From their all-new powertrain tuned for added power to their razor-sharp handling, the UX and UX F SPORT models are prepared for any curve life throws at you.



## PERFORMANCE

UX F SPORT Handling shown in Ultrasonic Blue Mica 2.0<sup>4</sup>



- 196-hp<sup>5</sup> hybrid powertrain
- 17.1-ft turning radius
- Available all-wheel drive<sup>6</sup>

- Paddle shifters (F SPORT Handling)
- Performance-inspired instrumentation (F SPORT Handling)
- F SPORT-tuned suspension (F SPORT Handling)

Learn more at [lexus.com/UXPerformance](https://lexus.com/UXPerformance)



## TECHNOLOGY

UX F SPORT Handling shown with Circuit Red NuLuxe interior trim

# MORE CONNECTIVITY TO HELP YOU DO MORE

Every UX features Lexus Interface.<sup>7</sup> With an active Drive Connect<sup>8</sup> trial or subscription (4G network dependent), this system can enable you to control most functions using just your voice, offer more accurate directions, and so much more. Designed to elevate every drive, this is technology inspired by you.



# TECHNOLOGY

UX F SPORT Design shown in Ultra White<sup>4</sup>




- Available Power Rear Door with Kick Sensor<sup>3</sup>
- Available Intuitive Parking Assist<sup>9</sup>

- Available 12.3-in touchscreen display
- Available Drive Connect<sup>8</sup> with Cloud Navigation, Intelligent Assistant and Destination Assist (4G network dependent)

- Wireless Apple CarPlay<sup>®10</sup> integration
- Wireless Android Auto<sup>™11</sup> compatibility

Learn more at [lexus.com/UXTechnology](https://lexus.com/UXTechnology)



## LEXUS SAFETY SYSTEM + 3.0

- Road Sign Assist<sup>12</sup>
- Automatic High Beams<sup>13</sup>
- Full-Speed Dynamic Radar Cruise Control with Curve Speed Management<sup>14</sup>
- Pre-Collision System with Pedestrian Detection<sup>15</sup> and Intersection Support<sup>16</sup>
- Lane Tracing Assist<sup>17</sup>
- Lane Departure Alert with Steering Assist<sup>18</sup>
- Proactive Driving Assist<sup>19</sup>

## TECHNOLOGY

UX Premium shown in Iridium<sup>†</sup>

PEACE OF MIND,  
STANDARD.

Our integrated suite of standard active safety equipment, Lexus Safety System+ 3.0,<sup>20</sup> helps add peace of mind and convenience to every drive.

Learn more at [lexus.com/UXSafety](https://lexus.com/UXSafety)



## SPECIFICATIONS

### UX 300h

196

NET COMBINED HORSEPOWER<sup>5</sup>

IN-LINE 4

2.0-LITER ENGINE +  
LEXUS HYBRID DRIVE

FWD

STANDARD

ECVT

ELECTRONICALLY CONTROLLED  
CONTINUOUSLY VARIABLE  
TRANSMISSION

8.0

0-60 MPH (SEC)<sup>21</sup>

45/41/43

CITY / HWY / CMB  
EPA-ESTIMATED MPG<sup>22</sup>

### UX 300h AWD

196

NET COMBINED HORSEPOWER<sup>5</sup>

IN-LINE 4

2.0-LITER ENGINE +  
LEXUS HYBRID DRIVE

AWD<sup>6</sup>

STANDARD

ECVT

ELECTRONICALLY CONTROLLED  
CONTINUOUSLY VARIABLE  
TRANSMISSION

7.9

0-60 MPH (SEC)<sup>21</sup>

44/40/42

CITY / HWY / CMB  
EPA-ESTIMATED MPG<sup>22</sup>

# UX FEATURES



## UX

Standard features include:

- SmartAccess<sup>23</sup> with push-button Start/Stop
- Drive Mode Select with Sport, Normal and ECO drive modes
- EV drive mode<sup>2</sup>
- Wireless Apple CarPlay<sup>®10</sup> integration
- Wireless Android Auto<sup>™11</sup> compatibility
- Lexus Interface<sup>7</sup> with 8-in touchscreen display
- Safety Connect<sup>7</sup> with up to 10-year trial\*
- Service Connect<sup>7</sup> with up to 10-year trial\*
- Remote Connect<sup>7</sup> 3-year trial\*
- Wi-Fi Connect<sup>7</sup> (AT&T hotspot) with up to 30-day 3GB trial\*
- Drive Connect<sup>7</sup> with Cloud Navigation, Intelligent Assistant and Destination Assist available by subscription\*
- Lexus App (Remote Connect<sup>7</sup> trial with vehicle start, service scheduling, Vehicle Health Reports/Alerts<sup>7</sup> and more\*)
- SiriusXM<sup>®24</sup> 3-month trial subscription
- Bluetooth<sup>®25</sup> connectivity and four USB-C<sup>26</sup> ports
- Dual-zone automatic climate control with interior air filter
- Eight-way power-adjustable front seats
- 60/40-split folding rear seats
- Adjustable rear cargo deckboard
- Blind Spot Monitor<sup>27</sup> with Rear Cross-Traffic Alert<sup>28</sup>
- Backup camera<sup>29</sup>
- Lexus Safety System+ 3.0<sup>20</sup>

\*4G network dependent

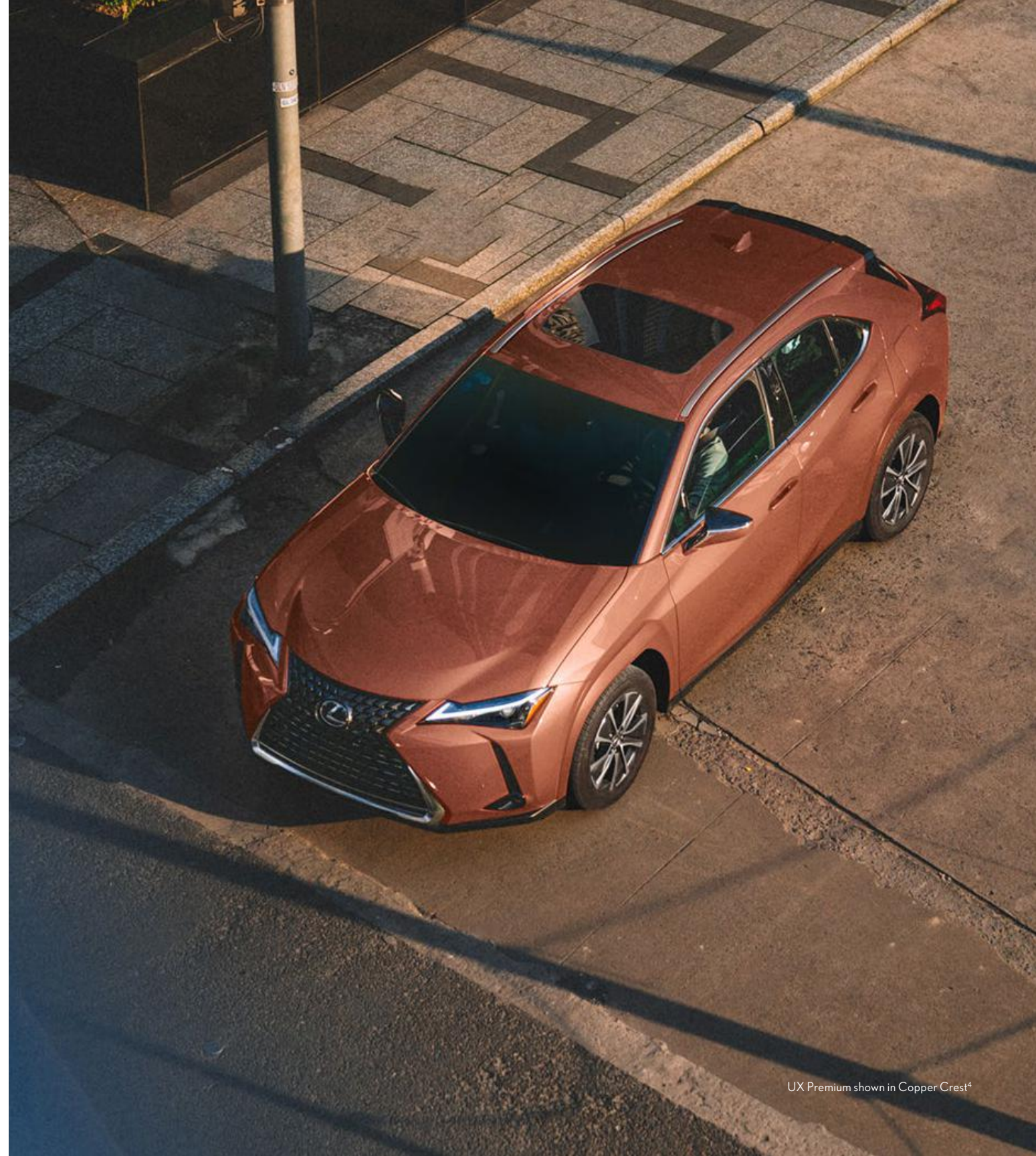


## PREMIUM

Includes UX features, and adds or replaces:

- Heated and ventilated front seats
- Power tilt-and-slide moonroof
- Rain-sensing windshield wipers
- Power Rear Door with Kick Sensor<sup>3</sup>
- Color-keyed overfenders
- Auto-dimming rearview mirror with HomeLink<sup>®30</sup> garage door opener
- 12.3-in multi-information display
- Intuitive Parking Assist<sup>9</sup>

View all standard features and configure yours at [lexus.com/build/UXh](https://lexus.com/build/UXh)



UX Premium shown in Copper Crest<sup>4</sup>



UX F SPORT Handling shown in Ultrasonic Blue Mica 2.0<sup>4</sup>

## UX F SPORT FEATURES



### F SPORT DESIGN

*Includes UX features, and adds or replaces:*

- F SPORT 18-in split-five-spoke alloy wheels with run-flat tires<sup>31</sup>
- Color-keyed overfenders
- LED foglamps and cornering lamps
- F SPORT exterior styling includes unique grille, front and rear bumpers, black roof and roof rails
- Rain-sensing windshield wipers
- Power tilt-and-slide moonroof
- 12.3-in multi-information display
- Heated and ventilated front seats
- Digital Key<sup>32</sup> (requires active Remote Connect trial or subscription)\* and SmartAccess<sup>23</sup> card key
- Illuminated entry system
- Intuitive Parking Assist<sup>9</sup>



### F SPORT HANDLING

*Includes F SPORT Design features, and adds or replaces:*

- F SPORT-tuned suspension
- Race-inspired 12.3-in multi-information display
- F SPORT interior styling, including bolstered front seats, perforated leather-trimmed heated steering wheel and more
- Lexus Interface<sup>7</sup> with 12.3-in touchscreen display
- Drive Connect<sup>7</sup> with Cloud Navigation, Intelligent Assistant and Destination Assist 3-year trial\*
- Auto-dimming rearview mirror with HomeLink<sup>®30</sup> garage door opener
- Power Rear Door with Kick Sensor<sup>3</sup>

\*4G network dependent

View all standard features and configure yours at [lexus.com/build/UXh](https://lexus.com/build/UXh)

# OPTIONS

- Intuitive Parking Assist<sup>9</sup> (UX)
- Head-Up Display (Premium, F SPORT Design, F SPORT Handling)
- Auto-dimming rearview mirror (UX, F SPORT Design)
- Digital Key<sup>32</sup> (requires active Remote Connect trial or subscription)\* and SmartAccess<sup>23</sup> card key (Premium)

- Power Rear Door with Kick Sensor<sup>3</sup> (UX, F SPORT Design)
- Power tilt-and-slide moonroof (UX)
- Wireless charger<sup>33</sup>

- Lexus Interface<sup>7</sup> with 12.3-in touchscreen display; Drive Connect<sup>7</sup> with Cloud Navigation, Intelligent Assistant and Destination Assist 3-year trial.\* (Premium)

\*4G network dependent



UX F SPORT Handling shown in Ultra White<sup>4</sup>

# WHEELS



18-in

Five-spoke alloy wheels with Dark Gray and machined finish and run-flat tires<sup>31</sup>

STANDARD  
UX, Premium



18-in

Split-five-spoke alloy wheels and run-flat tires<sup>31</sup>

STANDARD  
F SPORT Design,  
F SPORT Handling



18-in

Accessory alloy wheels<sup>34</sup> with Gloss Black and machined finish

AVAILABLE  
All models



# ACCESSORIES

- Alloy wheel locks
- Alloy wheels with Gloss Black and machined finish
- Alloy wheels with Matte Black and machined finish
- All-weather cargo mat<sup>35</sup>
- All-weather floor liners<sup>36</sup>
- Carpet cargo mat<sup>35</sup>
- Carpet floor mats<sup>36</sup>
- Dashcam<sup>37</sup>
- Door edge film by 3M™
- Door edge guards
- Emergency assistance kit
- First aid kit
- Glass breakage sensor
- Illuminated door sills
- Key gloves with Lexus logo

- Lexus Universal Tablet Holder
- Mudguards
- Paint protection film by 3M™<sup>38</sup>
- Quick-charge cables (USB)<sup>26</sup>
- Rear bumper appliqué
- Roof rack cross bars

## F SPORT ACCESSORIES

- Carpet cargo mat<sup>35</sup>
- Carpet floor mats<sup>36</sup>
- Key gloves with F logo
- Rear bumper appliqué

Learn more<sup>34</sup> at [lexus.com/accessories](https://lexus.com/accessories)



**GRECIAN WATER  
EXTERIOR**

**BIRCH NULUXE  
INTERIOR**

UX 300h  
UX 300h PREMIUM

**PALOMINO NULUXE  
INTERIOR**

UX 300h PREMIUM

**BLACK NULUXE  
INTERIOR**

UX 300h  
UX 300h PREMIUM

**BLACK WASHI  
INTERIOR TRIM**

UX 300h  
UX 300h PREMIUM

**OBSIDIAN\*  
ROOF**

**ULTRASONIC BLUE MICA 2.0\*  
EXTERIOR**

**BIRCH NULUXE  
INTERIOR**

**CIRCUIT RED NULUXE  
INTERIOR**

**BLACK NULUXE  
INTERIOR**

**BLACK WASHI  
INTERIOR TRIM**

**BLACK  
INTERIOR TRIM**

UX 300h F SPORT DESIGN

UX 300h F SPORT HANDLING

UX 300h F SPORT DESIGN  
UX 300h F SPORT HANDLING

UX 300h F SPORT DESIGN

UX 300h F SPORT HANDLING

\*Additional charge

This page is meant to represent color combinations for exterior, interior seat surfaces and trims available on the UX line. For specific combination details, which can vary by style, visit [lexus.com/build/UXh](https://lexus.com/build/UXh).

**REDLINE  
EXTERIOR**

**BIRCH NULUXE  
INTERIOR**

**PALOMINO NULUXE  
INTERIOR**

**BLACK NULUXE  
INTERIOR**

**BLACK WASH/  
INTERIOR TRIM**

UX 300h  
UX 300h PREMIUM

UX 300h PREMIUM

UX 300h  
UX 300h PREMIUM

UX 300h  
UX 300h PREMIUM

This page is meant to represent color combinations for exterior, interior seat surfaces and trims available on the UX line. For specific combination details, which can vary by style, visit [lexus.com/build/UXh](https://lexus.com/build/UXh).

**OBSIDIAN\*  
ROOF**

**REDLINE  
EXTERIOR**

**BIRCH NULUXE  
INTERIOR**

**BLACK NULUXE  
INTERIOR**

**BLACK WASHI  
INTERIOR TRIM**

**BLACK  
INTERIOR TRIM**

UX 300h F SPORT DESIGN

UX 300h F SPORT DESIGN  
UX 300h F SPORT HANDLING

UX 300h F SPORT DESIGN

UX 300h F SPORT HANDLING

\*Additional charge

This page is meant to represent color combinations for exterior, interior seat surfaces and trims available on the UX line. For specific combination details, which can vary by style, visit [lexus.com/build/UXh](https://lexus.com/build/UXh).

**COPPER CREST\***  
**EXTERIOR**

**PALOMINO NULUXE**  
**INTERIOR**

UX 300h PREMIUM

**BLACK NULUXE**  
**INTERIOR**

UX 300h  
UX 300h PREMIUM

**BLACK WASHI**  
**INTERIOR TRIM**

UX 300h  
UX 300h PREMIUM

\*Additional charge

This page is meant to represent color combinations for exterior, interior seat surfaces and trims available on the UX line. For specific combination details, which can vary by style, visit [lexus.com/build/UXh](https://lexus.com/build/UXh).

**OBSIDIAN\*  
ROOF**

**COPPER CREST\*  
EXTERIOR**

**BIRCH NULUXE  
INTERIOR**

**BLACK NULUXE  
INTERIOR**

**BLACK WASHI  
INTERIOR TRIM**

**BLACK  
INTERIOR TRIM**

UX 300h F SPORT DESIGN

UX 300h F SPORT DESIGN  
UX 300h F SPORT HANDLING

UX 300h F SPORT DESIGN

UX 300h F SPORT HANDLING

\*Additional charge

This page is meant to represent color combinations for exterior, interior seat surfaces and trims available on the UX line. For specific combination details, which can vary by style, visit [lexus.com/build/UXh](https://lexus.com/build/UXh).

**NORI GREEN PEARL  
EXTERIOR**

**BIRCH NULUXE  
INTERIOR**

UX 300h  
UX 300h PREMIUM

**PALOMINO NULUXE  
INTERIOR**

UX 300h PREMIUM

**BLACK NULUXE  
INTERIOR**

UX 300h  
UX 300h PREMIUM

**BLACK WASHI  
INTERIOR TRIM**

UX 300h  
UX 300h PREMIUM

This page is meant to represent color combinations for exterior, interior seat surfaces and trims available on the UX line. For specific combination details, which can vary by style, visit [lexus.com/build/UXh](https://lexus.com/build/UXh).

**OBSIDIAN  
EXTERIOR**

**BIRCH NULUXE  
INTERIOR**

**BIRCH/LAPIS NULUXE  
INTERIOR**

**PALOMINO NULUXE  
INTERIOR**

**CIRCUIT RED NULUXE  
INTERIOR**

**BLACK NULUXE  
INTERIOR**

**BLACK WASH/  
INTERIOR TRIM**

**BLACK  
INTERIOR TRIM**

UX 300h  
UX 300h PREMIUM  
UX 300h F SPORT  
DESIGN

UX 300h

UX 300h PREMIUM

UX 300h F SPORT  
HANDLING

UX 300h  
UX 300h PREMIUM  
UX 300h F SPORT  
DESIGN  
UX 300h F SPORT  
HANDLING

UX 300h  
UX 300h PREMIUM  
UX 300h F SPORT  
DESIGN

UX 300h F SPORT  
HANDLING

This page is meant to represent color combinations for exterior, interior seat surfaces and trims available on the UX line. For specific combination details, which can vary by style, visit [lexus.com/build/UXh](https://lexus.com/build/UXh).

**CAVIAR  
EXTERIOR**

**BIRCH NULUXE  
INTERIOR**

**BIRCH/LAPIS NULUXE  
INTERIOR**

**PALOMINO NULUXE  
INTERIOR**

**BLACK NULUXE  
INTERIOR**

**BLACK WASHI  
INTERIOR TRIM**

UX 300h  
UX 300h PREMIUM

UX 300h

UX 300h PREMIUM

UX 300h  
UX 300h PREMIUM

UX 300h  
UX 300h PREMIUM

This page is meant to represent color combinations for exterior, interior seat surfaces and trims available on the UX line. For specific combination details, which can vary by style, visit [lexus.com/build/UXh](https://lexus.com/build/UXh).

**CLOUDBURST GRAY\***  
**EXTERIOR**

**BIRCH NULUXE**  
**INTERIOR**

**BIRCH/LAPIS NULUXE**  
**INTERIOR**

**PALOMINO NULUXE**  
**INTERIOR**

**BLACK NULUXE**  
**INTERIOR**

**BLACK WASHI**  
**INTERIOR TRIM**

UX 300h  
UX 300h PREMIUM

UX 300h

UX 300h PREMIUM

UX 300h  
UX 300h PREMIUM

UX 300h  
UX 300h PREMIUM

\*Additional charge

This page is meant to represent color combinations for exterior, interior seat surfaces and trims available on the UX line. For specific combination details, which can vary by style, visit [lexus.com/build/UXh](https://lexus.com/build/UXh).

**OBSIDIAN\*  
ROOF**

**CLOUDBURST GRAY\*  
EXTERIOR**

**BIRCH NULUXE  
INTERIOR**

**CIRCUIT RED NULUXE  
INTERIOR**

**BLACK NULUXE  
INTERIOR**

**BLACK WASHI  
INTERIOR TRIM**

**BLACK  
INTERIOR TRIM**

UX 300h F SPORT DESIGN

UX 300h F SPORT HANDLING

UX 300h F SPORT DESIGN  
UX 300h F SPORT HANDLING

UX 300h F SPORT DESIGN

UX 300h F SPORT HANDLING

\*Additional charge

This page is meant to represent color combinations for exterior, interior seat surfaces and trims available on the UX line. For specific combination details, which can vary by style, visit [lexus.com/build/UXh](https://lexus.com/build/UXh).

IRIDIUM\*  
EXTERIOR

BIRCH NULUXE  
INTERIOR

BIRCH/LAPIS NULUXE  
INTERIOR

PALOMINO NULUXE  
INTERIOR

BLACK NULUXE  
INTERIOR

BLACK WASHI  
INTERIOR TRIM

UX 300h  
UX 300h PREMIUM

UX 300h

UX 300h PREMIUM

UX 300h  
UX 300h PREMIUM

UX 300h  
UX 300h PREMIUM

\*Additional charge

This page is meant to represent color combinations for exterior, interior seat surfaces and trims available on the UX line. For specific combination details, which can vary by style, visit [lexus.com/build/UXh](https://lexus.com/build/UXh).

**OBSIDIAN\*  
ROOF**

**IRIDIUM\*  
EXTERIOR**

**BIRCH NULUXE  
INTERIOR**

**CIRCUIT RED NULUXE  
INTERIOR**

**BLACK NULUXE  
INTERIOR**

**BLACK WASHI  
INTERIOR TRIM**

**BLACK  
INTERIOR TRIM**

UX 300h F SPORT DESIGN

UX 300h F SPORT HANDLING

UX 300h F SPORT DESIGN  
UX 300h F SPORT HANDLING

UX 300h F SPORT DESIGN

UX 300h F SPORT HANDLING

\*Additional charge

This page is meant to represent color combinations for exterior, interior seat surfaces and trims available on the UX line. For specific combination details, which can vary by style, visit [lexus.com/build/UXh](https://lexus.com/build/UXh).

**EMINENT WHITE PEARL\***  
**EXTERIOR**

**BIRCH NULUXE**  
**INTERIOR**

**BIRCH/LAPIS NULUXE**  
**INTERIOR**

**PALOMINO NULUXE**  
**INTERIOR**

**BLACK NULUXE**  
**INTERIOR**

**BLACK WASHI**  
**INTERIOR TRIM**

UX 300h  
UX 300h PREMIUM

UX 300h

UX 300h PREMIUM

UX 300h  
UX 300h PREMIUM

UX 300h  
UX 300h PREMIUM

\*Additional charge

This page is meant to represent color combinations for exterior, interior seat surfaces and trims available on the UX line. For specific combination details, which can vary by style, visit [lexus.com/build/UXh](https://lexus.com/build/UXh).

**OBSIDIAN\*  
ROOF**

**ULTRA WHITE\*  
EXTERIOR**

**BIRCH NULUXE  
INTERIOR**

**CIRCUIT RED NULUXE  
INTERIOR**

**BLACK NULUXE  
INTERIOR**

**BLACK WASHI  
INTERIOR TRIM**

**BLACK  
INTERIOR TRIM**

UX 300h F SPORT DESIGN

UX 300h F SPORT HANDLING

UX 300h F SPORT DESIGN  
UX 300h F SPORT HANDLING

UX 300h F SPORT DESIGN

UX 300h F SPORT HANDLING

\*Additional charge

This page is meant to represent color combinations for exterior, interior seat surfaces and trims available on the UX line. For specific combination details, which can vary by style, visit [lexus.com/build/UXh](https://lexus.com/build/UXh).



## A COMPLETE SUITE OF STANDARD SERVICES AND BENEFITS

When you buy a Lexus, you're getting more than an exceptionally crafted vehicle, you're stepping into a world-class luxury experience like no other. Every new Lexus UX includes LexusCare, a complete suite of standard services and benefits that goes beyond your Lexus dealership to include exclusive event access, comprehensive Roadside Assistance<sup>39</sup> and more.



## OWNERSHIP SERVICES

- Two complimentary maintenance services<sup>40</sup>
- 4-year/50,000-mile Basic Warranty<sup>41</sup>
- 10-year/150,000-mile Hybrid Battery Warranty<sup>42</sup>
- Up to 10-year trial of Service Connect<sup>43\*</sup>
- Complimentary loaner vehicles<sup>44</sup>
- Complimentary vehicle wash

\*4G network dependent



## SAFETY

- In addition to standard Lexus Safety System+ 3.0,<sup>20</sup> every new UX includes up to a 10-year trial of Safety Connect.<sup>45\*</sup>

## CONNECTIVITY

- With LexusCare, every new UX comes standard with connectivity services, including a 3-year trial of Remote Connect<sup>32\*</sup> and a SiriusXM<sup>®24</sup> 3-month trial subscription.

\*4G network dependent



## EXCLUSIVE EXPERIENCES

- Entertainment exclusives
- Exclusive retailer offers
- Elite culinary experiences
- VIP sporting event access
- DESTINATIONS by Lexus resort credits and more

Learn more at  
[lexus.com/LexusCare](https://lexus.com/LexusCare)



**BUILD YOUR UX**

**FIND A DEALER**

**VIEW LEXUS OFFERS**

WARRANTY Four-year/50,000-mile Lexus Limited Warranty. Six-year/70,000-mile Powertrain Warranty. Six-year/unlimited-mileage Corrosion Perforation Warranty. Eight-year/100,000-mile Hybrid System Warranty. Ten-year/150,000-mile Hybrid Battery Warranty. All warranties with zero deductible. See the *UX Warranty and Services Guide* at your Lexus dealer for details.

**1.** EPA-estimated 45city/41hwy/43comb MPG rating for 2025 Lexus UX 300h FWD. Use for comparison purposes only. Your mileage will vary for many reasons, including your vehicle's condition and how/where you drive. See [www.fueleconomy.gov](http://www.fueleconomy.gov). **2.** EV Mode lets you operate solely on battery power at low speeds for short distances and in limited circumstances, such as in a parking garage. Different conditions may prevent or limit usage. See your *Owner's Manual* for instructions and limitations. **3.** Water, weather, dirt, and other conditions may cause the hands-free power liftgate sensor to not operate properly. See *Owner's Manual* for limitations. **4.** Cloudburst Gray, Copper Crest, Eminent White Pearl, Iridium, Ultrasonic Blue Mica 2.0 and Ultra White available for an additional charge. **5.** 196 net combined horsepower. **6.** AWD operates at speeds up to 43 mph. **7.** Lexus Interface Services vary by vehicle and are subject to change at any time without notice. Services depend on 4G network availability, a cellular connection and GPS signal. Without any one or more of these things, operability may be limited or precluded, including access to response center and emergency support. Further, if and when 4G network changes or is discontinued, or the underlying technology required to support service becomes obsolete, then the Connected Services will not work, and Lexus will need to discontinue impacted services. Services require account registration through the Lexus app and acceptance of the Connected Services Terms of Use at Lexus - Connected Services Terms of Use and Master Data Consent. Data charges may apply. For Lexus Interface Services' vehicle-generated data collection, use, sharing and retention practices and agreements, see <https://www.lexus.com/privacy>. All trials begin on original purchase or lease date of new vehicle, with the exception of Wi-Fi for which trial begins at time of activation. Paid subscription required after trial (if applicable). For Safety Connect, stolen vehicle police report required to use Stolen Vehicle Locator. Automatic Collision Notification activates only in limited circumstances. Remote start/stop and/or lock/unlock and other features of Remote Connect are only available on select models. Use only if aware of circumstances surrounding vehicle and it is legal and safe to do so (e.g., do not remotely start a gas-engine vehicle in an enclosed space or if vehicle is occupied by a child). Drive Connect service not available in every city or roadway. For Service Connect, information provided is based on the last time data was collected from vehicle and is not real-time data. Wi-Fi Connect service not available everywhere or in every vehicle. Valid in contiguous U.S. and Alaska. Up to 5 devices supported. Integrated Streaming requires subscription for third-party provider services. Wi-Fi Connect trial (if applicable) begins at time of enrollment and expires the earlier of: 3GB of data is used or 30 days after enrollment. **8.** Cloud Navigation, Intelligent Assistant, and Destination Assist (on select models) require a trial or subscription to Drive Connect. Drive Connect services may vary and are subject to change at any time without notice. Availability and accuracy depend on 4G network availability, a cellular connection and GPS signal. Without any one or more of these things, operability may be limited or precluded. Further, if and when 4G network changes or is discontinued, or the underlying technology required to support service becomes obsolete, then services will not work, and will need to be discontinued. Services require account registration through Lexus App and acceptance of Connected Services Terms of Use at Lexus - Connected Services Terms of Use and Master Data Consent. Data charges may apply. For Lexus Interface Services' vehicle-generated data collection, use, sharing and retention practices and agreements, see <https://www.lexus.com/privacy>. Trial period begins on original purchase or lease date of new vehicle. Services may vary and are subject to change without notice. Requires app download/registration, acceptance of Terms of Use and subscription after trial (if applicable). Data charges may apply. **9.** Intuitive Parking Assist (IPA) may warn drivers of front and rear collisions with certain objects when traveling at low speeds. Drivers should visually confirm clearance during use. See *Owner's Manual* for limitations. **10.** Apple CarPlay requires a compatible iPhone with an active data plan. Check compatibility at <https://www.apple.com/ios/carplay/>. Operability depends on network availability, a cellular connection and GPS signal. Services vary by vehicle and are subject to change at any time without notice. Data charges may apply. To learn more, go to <https://lexusconnectedtechnologysupport.com/lexus/home>. To learn more about Lexus' connected services data collection, use, sharing and retention practices, please visit <https://www.lexus.com/privacy>. Apple CarPlay and iPhone are registered trademarks of Apple Inc. **11.** Wireless use of Android Auto requires a compatible Android 11.0+ phone and compatible active data plan. Check [g.co/androidauto/requirements](http://g.co/androidauto/requirements) for compatibility. Operability depends on network availability, a cellular connection and GPS signal. Services vary by vehicle and are subject to change at any time without notice. Data charges may apply. To learn more, go to <https://lexusconnectedtechnologysupport.com/lexus/home>. To learn more about Lexus' connected services data collection, use, sharing and retention practices, please visit <https://www.lexus.com/privacy>. Android and Android Auto are trademarks of Google LLC. **12.** Road Sign Assist only recognizes certain road signs. See *Owner's Manual* for limitations. **13.** Automatic High Beams operate at speeds above approximately 21 mph. See *Owner's Manual* for instructions and limitations. **14.** Dynamic Radar Cruise Control is not a substitute for safe and attentive driving. See *Owner's Manual* for instructions and limitations. **15.** The Pre-Collision System (PCS) with Pedestrian Detection (PD) is designed to help reduce the crash speed and damage in certain frontal collisions involving a vehicle, a pedestrian, bicyclist or motorcyclist. PCS w/PD is not a substitute for safe and attentive driving. System effectiveness depends on many factors, such as speed, size and position of vehicle, pedestrian, bicyclist or motorcyclist, and weather, light and road conditions. See *Owner's Manual* for limitations. **16.** Intersection Support is designed to detect a pedestrian or approaching vehicle at intersections under certain conditions, determine if impact is imminent and help reduce impact speed. It is not a substitute for safe and attentive driving. See *Owner's Manual* for limitations. **17.** The Lane Tracing Assist (LTA) lane centering function is designed to read visible lane markers and detect other vehicles under certain conditions. It is only operational when DRCC is engaged. See *Owner's Manual* for limitations. **18.** Lane Departure Alert with Steering Assist is designed to read visible lane markers under certain conditions. It provides a visual/audible alert and slight steering force when lane departure is detected. It is not a collision-avoidance system or substitute for safe and attentive driving. Effectiveness depends on many factors including road, weather and vehicle conditions. See *Owner's Manual* for limitations. **19.** Proactive Driving Assist (PDA) is designed to detect certain objects or curves in the road and provide gentle braking and/or steering support. PDA is not a substitute for safe and attentive driving. System effectiveness depends on many factors, such as speed, size and position of detected objects and weather, light and road conditions. See *Owner's Manual* for additional limitations and details. **20.** Lexus Safety System effectiveness depends on many factors including road, weather and vehicle conditions. Drivers are responsible for paying attention to their surroundings and driving safely. See *Owner's Manual* for limitations. **21.** Performance figures are for comparison only and were obtained with prototype vehicles by professional drivers. **22.** EPA-estimated MPG ratings. Use for comparison purposes only. Your mileage will vary for many reasons, including your vehicle's condition and how/where you drive. See [www.fueleconomy.gov](http://www.fueleconomy.gov). **23.** The engine immobilizer is a state-of-the-art anti-theft system initiated when key is inserted into ignition switch or a SmartAccess fob is in/near vehicle. Engine will only start if the code in the transponder chip inside the key/fob matches code in vehicle's immobilizer. The transponder chip is embedded in the key/fob and can be costly to replace. For lost key or fob, see a Lexus dealer or go to [www.aa.org](http://www.aa.org) to find a qualified locksmith for high-security key service. **24.** Service will automatically stop at the end of your trial subscription period unless you decide to continue service. Trial is non-transferable. If you do not wish to enjoy your trial, you can cancel by calling the number below. All SiriusXM services require a subscription, each sold separately by SiriusXM after the trial period. Services subject to the SiriusXM Customer Agreement and Privacy Policy, visit [siriusxm.com](http://siriusxm.com) for complete terms and how to cancel which includes online methods or calling 1-866-635-2349. Some services and features are subject to device capabilities and location availability. Satellite service not available in AK & HI. Content varies by SiriusXM subscription plan. All fees, content and features are subject to change. SiriusXM and related logos are trademarks of Sirius XM Radio Inc. and its respective subsidiaries. **25.** A compatible Bluetooth-enabled phone must be paired. Phone performance depends on software, coverage and carrier. The Bluetooth word mark and logos are registered trademarks of Bluetooth SIG, Inc. Use of such marks by Lexus is under license. **26.** Charging may not be compatible with all mobile phones, smart devices, tablets, e-readers, MP3/WMA players and like models. **27.** Do not rely exclusively on Blind Spot Monitor. Look over shoulder and use turn signal. See *Owner's Manual* for limitations. **28.** Do not rely exclusively on the Rear Cross-Traffic Alert. Visually confirm clearance during use. See *Owner's Manual* for limitations. **29.** The backup camera does not provide a comprehensive view. Always look over shoulder and use outside mirrors. See *Owner's Manual* for limitations. **30.** HomeLink and HomeLink® house icon are registered trademarks of Gentex Corporation. **31.** Run-flat tire technology is designed for limited emergency use only below 55 mph and the tire should be replaced within 100 miles. See *Owner's Manual* for additional limitations. **32.** Digital Key requires a trial or subscription to Remote Connect. Use only if aware of circumstances surrounding vehicle and it is legal and safe to do so (e.g., do not remotely start a gas-engine vehicle in an enclosed space or if vehicle is occupied by a child). Remote Connect services vary by vehicle and are subject to change at any time without notice. Services depend on 4G network availability, a cellular connection and GPS signal. Without any one or more of these things, operability may be limited or precluded. Further, if and when 4G network changes or is discontinued, or the underlying technology required to support service becomes obsolete, then the services will not work, and will need to be discontinued. Digital Key also requires Bluetooth connectivity. Services require account registration through Lexus App and acceptance of the Connected Services Terms of Use at Lexus - Connected Services Terms of Use and Master Data Consent. Data charges may apply. For Lexus Interface Services' vehicle-generated data collection, use, sharing and retention practices and agreements, see <https://www.lexus.com/privacy>. Trial period begins on original purchase or lease date of new vehicle. Paid subscription required after trial (if applicable). Terms of Use apply. **33.** Wireless charging may not be compatible with all mobile phones, smart devices, tablets, e-readers, MP3/WMA players and like products. **34.** Accessories may vary by model year, not be available in all regions of the country, or require a special order. Please see your dealer for availability. **35.** Cargo and load capacity limited by weight and distribution. Always properly secure cargo and cargo area. **36.** This floor liner or floor mat was designed specifically for use in your model and model year vehicle and SHOULD NOT be used in any other vehicle. To avoid potential interference with pedal operation, each liner or mat must be secured with its fasteners. Do not install a floor liner or mat on top of an existing floor liner or mat. **37.** Dashcam may not record under certain conditions. Use in accordance with applicable laws. See dashcam *Owner's Manual* for details. **38.** Genuine Lexus Paint Protection Film by 3M™ is designed for specific sections of the vehicle most prone to chipping which may vary depending on vehicle model. Select applications may require an additional charge. Lexus Genuine Accessory Warranty only applies when installation is performed by a trained Lexus-approved installer. See Lexus dealer for details. **39.** 24/7 Roadside Assistance coverage is 4 years/unlimited mileage. Does not include parts and fluids, except limited emergency gas delivery. Towing distance up to 25 miles. Restrictions apply. Available in the continental U.S. and Canada. See Lexus dealer for details and exclusions. **40.** Lexus provides complimentary maintenance for your first two scheduled visits at the earlier of 6 months/5,000 miles and 12 months/10,000 miles. See Warranty and Services Guide for details. For Lexus vehicles registered and normally operated in the continental United States, U.S. territories and Canada. **41.** See Lexus dealer for details. **42.** For Lexus hybrid, plug-in hybrid, fuel cell and battery electric vehicles beginning model year 2020, hybrid (HV) battery covered for 10 years from date of first use or 150,000 miles, whichever comes first. Coverage subject to the terms and conditions of New Vehicle Limited Warranty. See Warranty and Services Guide for details. **43.** Service Connect depends on operative telematics device, 4G network availability, and other factors beyond Lexus' control in order to operate, including 4G cellular network availability, a cellular connection and GPS signal. Without any one or more of these things, operability may be limited or precluded. Information provided is based on the last time data was collected from vehicle and is not real-time data. Services may vary and are subject to change without notice. Services require account registration through the Lexus app and acceptance of the Connected Services Terms of Use at Lexus - Connected Services Terms of Use and Master Data Consent. Data charges may apply. For Lexus Interface Services vehicle-generated data collection, use, sharing, and retention practices and agreements, see <https://www.lexus.com/privacy>. The Service Connect trial is included for up to 10 years. 4G network dependent. **44.** Subject to loaner vehicle availability. See your Lexus dealer. **45.** Safety Connect services vary by vehicle and are subject to change at any time without notice. Services depend on 4G cellular network availability, a cellular connection and GPS signal. Without any one or more of these things, operability may be limited or precluded, including access to response center and emergency support. Further, if and when 4G network changes or is discontinued, or the underlying technology required to support service becomes obsolete, then the services will not work, and will need to be discontinued. Stolen vehicle police report required to use Stolen Vehicle Locator. Automatic Collision Notification activates only in limited circumstances. Services may vary and are subject to change without notice. Services require account registration through Lexus App and acceptance of the Connected Services Terms of Use at Lexus - Connected Services Terms of Use and Master Data Consent. Data charges may apply. For Lexus Interface Services' vehicle-generated data collection, use, sharing, and retention practices and agreements, see <https://www.lexus.com/privacy>. A Safety Connect trial is included for up to 10 years on select vehicles with paid Connected Services packages. See your Lexus dealer for details. 4G network dependent.

Lexus strives to build vehicles to match customer interest, and thus they typically are built with popular options and option packages. Not all options/packages are available separately, and some may not be available in all regions of the country. Lexus Interface display shown may not reflect most recent over-the-air enhancements. See [lexus.com](http://lexus.com) for information about options/packages commonly available in your area. If you would prefer a vehicle without any or with different options, contact your dealer to check for current availability or the possibility of placing a special order. Specifications, features, equipment, technical data, performance figures, options, and color and trim are based upon information available at time of publishing, are subject to change without notice, and are for mainland U.S.A. vehicles only. Vehicles shown may be prototypes, shown using visual effects and/or shown with options. Actual models may vary. Colors depicted may vary based on multiple factors, including ambient lighting and the format in which they are being viewed (e.g., computer, mobile device, or print). See your Lexus dealer for details. Lexus reminds you to wear seatbelts, secure children in rear seat, obey all traffic laws and drive responsibly. For more information, call 800-USA-LEXUS (872-5398) or visit [lexus.com](http://lexus.com). To learn more about your financing options, contact your Lexus dealer or call Lexus Financial Services at 800-874-7050.