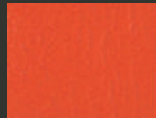


BOLTAFLEX COLOURWAYS

INDOOR



TOMATO
454 285



PERSIMMON
454 303



NASTURTIUM
454 293



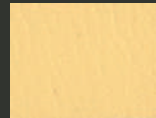
MARIGOLD
454 301



SAFFRON SILK
454 294



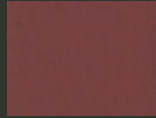
LEMON PEEL
454 308



WHEAT
454 327



NEW BURGUNDY
454 287



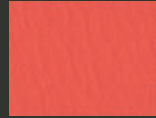
WINE
454 307



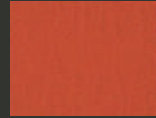
CANDY APPLE
454 298



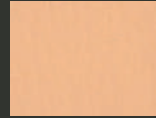
FIRE RED
454 311



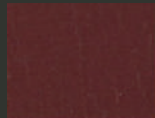
LOX
454 348



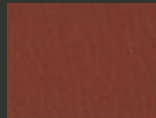
INDIAN RED
454 289



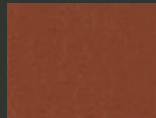
MELBA
454 365



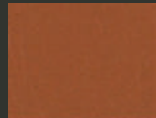
PORT
454 351



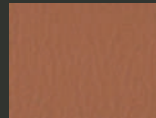
DEEP CLAY
454 288



RUSSET
454 297



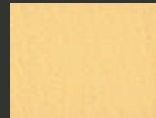
BURNT ORANGE
454 299



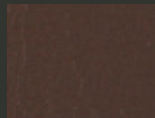
BRANDY
454 336



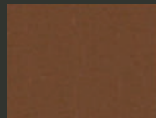
APRICOT
454 345



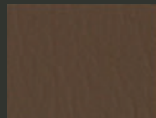
MELON
454 361



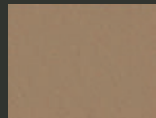
CHOCOLATE
454 318



ALLSPICE
454 304



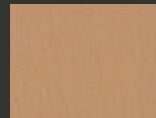
OAK BROWN
454 363



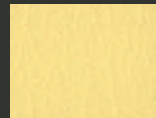
SADDLE TAN
454 309



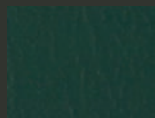
CAMEL
454 305



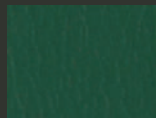
RUM SHERBET
454 354



CEYLON IVORY
454 334



HUNTER GREEN
454 296



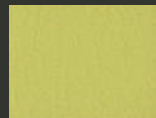
EMERALD
454 352



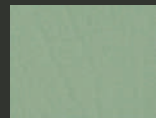
EMPIRE GREEN
454 314



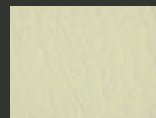
LIME
454 326



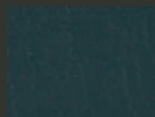
CITRUS
454 122



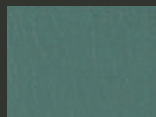
OCEAN GREY
454 332



MOONGLOW
454 310



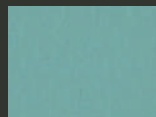
SPRUCE
454 325



JADE
454 317



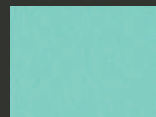
TURK
454 295



LIGHT TEAL
454 300



CHINA GREEN
454 319



QUARTZ
454 330



MINT JULEP
454 313



BLUEJAY
454 284



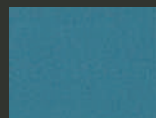
MARINA
454 283



BRIGHT BLUE
454 121



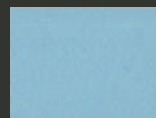
PHOENICIAN
454 350



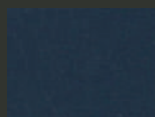
SKY
454 347



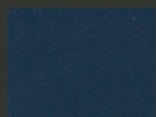
LIGHT BLUE
454 123



CERULEAN
454 349



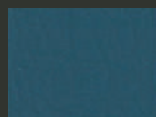
NAVY
454 312



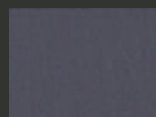
ROYAL BLUE
454 292



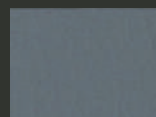
BLUEBERRY
454 286



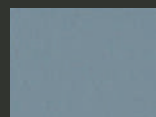
COLONIAL BLUE
454 346



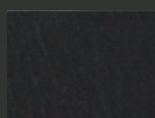
COAL
454 328



CADET
454 353



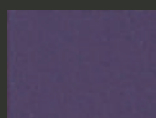
FJORD
454 344



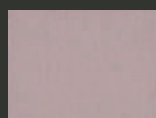
ESPRESSO
454 333



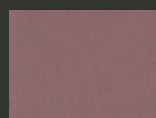
GRAPE
454 302



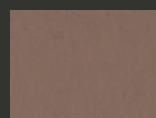
PURPLE IRIS
454 291



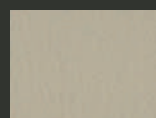
LILAC
454 368



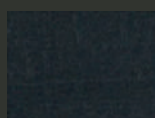
MAUVE
454 367



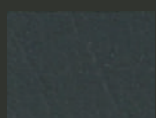
ROSEWOOD
454 908



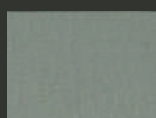
NATURAL
454 329



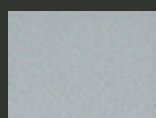
BLACK
454 290



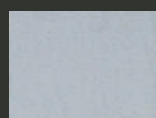
SLATE
454 316



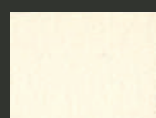
GREY
454 358



LIGHT GREY
454 331



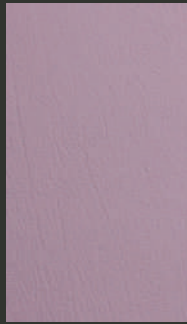
GLACIER
454 366



WHITE
454 306



SNOW WHITE
454 315



CHARACTERISTICS

INDOOR

Composition:	Topcoat: 86% PVC
Backing:	14% Rayon
Weight:	756 gr/m ²
Roll Width:	min. 137 cm
Roll Length:	+/- 27 m
Abrasion:	>300.000 cycles (MARTINDALE)
UV-Resistance:	>7 ISO EN 105-B02 (Blue Wool Scale)
Flame retardancy*:	EU EN 1021 Part 1 & 2 EU IMO 2010 FTP Code part 8 UK BS5852 (CRIB 5) FR NFP 92-503 (M1) DE DIN 4102 (B2) DE DIN 53438 Part 2 Class K1 US N18247-14 (Aircraft reg)

*This term and any corresponding data refer to the typical performance in the specific tests indicated and should not be construed to imply the behaviour of this or any other material under actual fire conditions.

FINISHES AND TREATMENTS

PreFixx protection finish:

Excellent stain resistance, Resistant to desinfectans (bleach), Prevents dehydration and premature aging of the material, Prevents deterioration and discoloration caused by UV rays, Sulfide stain resistant, Sea water resistant, Urine resistant, Blood resistant, Oil resistant, Ink resistant, Grease resistant, Mold- and Mildew resistant, Resistant against the following bacterias; Bacillus Cereus, Proteus Vulgaris, Bacillus Mycooides, Pseudomonas Aeruginosa, Bacillus Subtilis, Salmonella Choleraesuis, Enterococcus Faecalis, Salmonella Typhimurium, Escherichia Coli, Staphylococcus Aereus, Klebsiella Pneumoniae.

Mildew Resistance: ASTM G-21

SUSTAINABILITY

REACH | RoHS | Phthalate Free

CARE AND CLEANING



For optimum care and cleaning please read the following instructions and recommendations.

Upholstery that has been coated with PreFixx protective finish, is designed to be cleaned easily, over and over, without showing signs of wear. Most common stains like dirt and smudges simply wipe off. Many difficult stains like ballpoint ink can be cleaned with active solvents such as nail polish remover without damaging the PreFixx finish, when following the recommended cleaning instructions.

Disinfectant Use

The following information refers to the performance of PreFixx products in specifics tests, conducted under laboratory conditions. Results may vary under actual conditions:

• 3M™ Neutral Quat Disinfectant Cleaner Concentrate 23A • Agar™ Powerquat • Asepticare™ and Asepticare™ TB-II • AVISTAT-D™ Ready To Use Spray Disinfectant Cleaner • Biotrol BirexSE® and Opti-Cide 3® Wipes • Bleach 1:5 (20% bleach) • Bleach 1:9 (10% bleach) • Bleach-Rite® Disinfecting Spray • Brighton Professional Hepastat 256™ • CaviCide™, CaviCide1™ and CaviCide™ AF (Metrex) • CaviWipes™ XL (Metrex) • Clorox® Broad Spectrum Quaternary Disinfectant Cleaner • Clorox® Disinfecting Wipes • Clorox Healthcare® Bleach Germicidal Cleaner and Wipes • Clorox Healthcare® EZ-KILL® Wipes • Clorox Healthcare® VersaSure® Cleaner Disinfecting Wipes • Clorox® Hydrogen Peroxide Cleaner Disinfectant Spray & Wipes • Diversey™ Accel® INTERvention® Wipes • Diversey™ Avert® Sporidical Disinfectant Cleaner • Diversey™ J-512 Sanitizer • Ecolab® Peroxide Multi-Surface Cleaner and Disinfectant • ERC Performance Wipes • Ethanol 75% / Water 25% Disinfectant • EvaClean PURTABS • HaloMist™ • Isopropyl Alcohol 70% • KennelSol® (Alpha Tech Pet) • King Research Barbicide® Disinfecting Wipes • LYSOL® Disinfecting Wipes and Power & Free Multipurpose Cleaner with Hydrogen Peroxide • McKesson Disposable Germicidal Surface Wipes and Pro-Tech RTU Disinfectant Cleaner • Micro-Scientific® Opti-Cide® Max Wipes Disinfectant Cleaner • Mix Mate #13 (Simplex) • NLV-2 Disinfectant Cleaner & Virucide (Handi-Clean) • Nu-Kleen All Agro™ • OPTIM® 1 Wipes • OPTIM® 33TB • Oxivir® 1 RTU, Oxivir® Five 16 and Oxivir® TB • OxyCide™ Daily Disinfectant Cleaner • Palermo Healthcare DisCide® Ultra Disinfecting Spray • PortionPak® Germicidal Cleaner • Precise QTB Spray • PROCHEM® Oxy Plus • Purell® Healthcare Surface Disinfectant • Purell® Multi-Surface Disinfectant • Quat-Stat 5™ Disinfectant (Betco) • Sani-24® Germicidal Spray (PDI) • Sani-Cloth® AF3 Germicidal Disposable Wipes (PDI) • Super Sani-Cloth® and Super Sani-Cloth® Bleach Germicidal Disposable Wipes (PDI) • Sani-HyPerCide™ Germicidal Spray (PDI) • Sani-Prime® Germicidal Spray (PDI) • Sani Professional® Cleaning + Degreasing Multi-Surface Wipes • Sani Professional® Multi-Surface Cleaning Wipes • Sani Professional® No-Rinse Sanitizing Multi-Surface Wipes • SaniZide® Plus • Shockwave RTU Disinfectant & Cleaner • Spartan Clean On The Go 10 Super HDQ®L Disinfectant Cleaner • Spic and Span® Disinfecting All-Purpose Spray & Glass Cleaner (P&G) • STERI-7 XTRA CONCENTRATE (recommended dilution ratio 1:10) and STERI-7 XTRA WIPES • Tennant Carpet Spotting Kit All Purpose Spotter • TB-Cide® Quat • Vert-2-Go ED • Virex® II 256 and Virex® Plus One-Step Disinfectant Cleaner & Deodorant • Virox AHP 5, PREempt™ RTU and Rescue® RTU and Concentrate • Vital Oxide • Wayne® Concept 256N • Wex-Cide 128 • WipesPlus® Food Contact Sanitizing Wipes

Cleaning after Disinfection:

The following cleaners should be used with a soft cloth or damp sponge to remove chemical residue.

- Vyva Cleaner or Formula 409® All-Purpose spray cleaner
- Hand dishwashing soap and water

After cleaning, rinse area with clean water, then dry with a clean, lint-free cloth. Failure to remove chemical residue will cause discoloration of the coated fabric surface to manifest earlier in the life cycle of the product.

Cleaning methods to remove tougher stains

Step 1: Coffee, juice, red wine, sauces, chocolate, grease, crayon and suntan lotion. Remove excess spill with a damp cloth. Clean with a 1:1 mix of neutral liquid soap and water. Next, rinse with clean water and dry.

Step 2: Make-up. Use a straight application of neutral PH soap. Wipe with a clean white cloth or soft brush, rinse with clean water, and dry.

Step 3: Blood, urine, faeces and all other tough stains. Use a 1:10 mix of Isopropyl alcohol and water. Rinse thoroughly with clean water and dry.

For cleaning; use a soft white cotton cloth saturated with the recommended cleaning agent and rub the stain in random circles, ten times or more. Pat dry with another soft white cotton cloth and check the results. Do not use steel bristle brushes, abrasive scouring pads or metal, these cause permanent damage to the fabric. Methods 2 & 3 are not recommended for everyday cleaning! After cleaning, rinse the area with clean water, then dry with a clean, lint-free cloth. Failure to remove chemical residue will cause discoloration of the coated fabric surface to manifest itself earlier in the life cycle of the product.

SAMPLES AND ENQUIRES

samples: samples@vyvafabrics.nl | orders: info@vyvafabrics.nl



ANTIMICROBIAL



BLEACH CLEANABLE



FLAME RETARDANT



STAIN RESISTANT



PHTHALATE FREE



CHEMICAL RESISTANT



REACH COMPLIANT



INDOOR