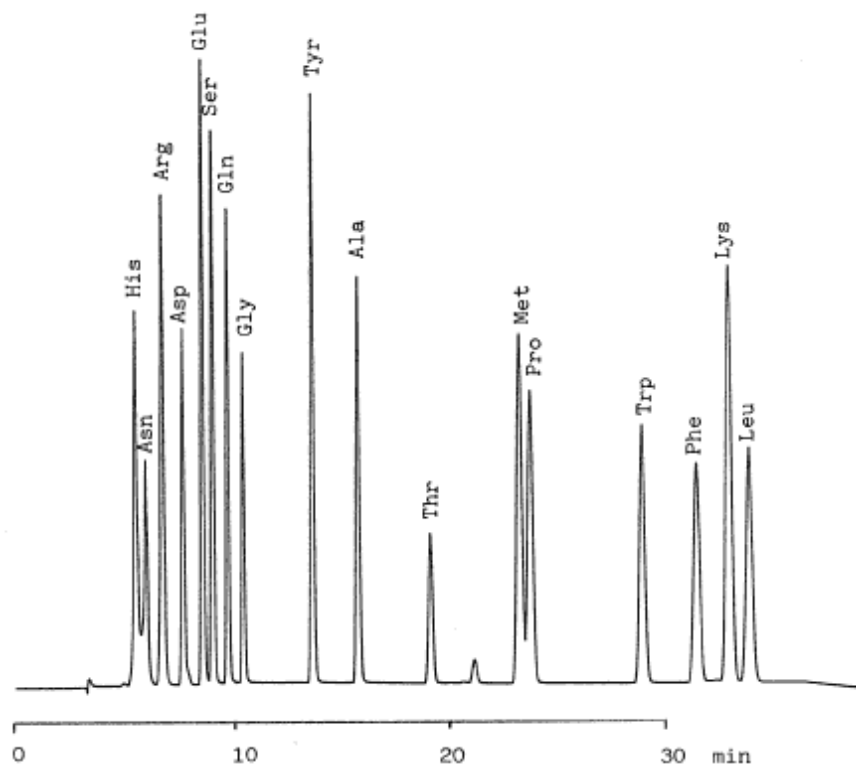


PTH-Amino acids

Data No. LA002-0000



Column : Inertsil ODS-2
5µm
250 × 4.6mm I.D.

Column Cat. No. : 5020-01102

Eluent : A: CH₃CN
B: H₂O

A/B = 20/80 - 5 min - 30/70 - 25 min - 40/60

Flow rate : 1.0 mL/min.

Col. Temp. : 40°C

Detection : UV 254nm

Sample : PTH-amino acids

Solutes

- : 1. Histidine (His)
2. Asparagine (Asn)
3. Arginine (Arg)
4. Aspartic acid (Asp)
5. Glutamic acid (Glu)
6. Serine (Ser)
7. Glutamine (Gln)
8. Glycine (Gly)
9. Tyrosine (Tyr)
10. Alanine (Ala)
11. Threonine (Thr)
12. Methionine (Met)
13. Proline (Pro)
14. Tryptophan (Trp)
15. Phenylalanine (Phe)
16. Lysine (Lys)
17. Leucine (Leu)