



thediscoverysource.com

PROFESSIONAL DEVELOPMENT 2026 CATALOG

February 2026

Empowering early childhood professionals with engaging, research-based training. Our professional development offerings are designed to support educators, caregivers, and specialists in building strong social-emotional foundations and creating inclusive, nurturing learning environments.



**Challenging
Behavior**

**Family
Engagement**

Neurodiversity

**Trauma
Informed
Support**

**CLASS®
Support
Tools**

MENU :

**Product-Aligned Professional
Development**

3-12

Supporting Families

13-15

Workshops & Conferences

16-20

Keynotes

21

Train The Trainer

22

Prices

23

FAQ

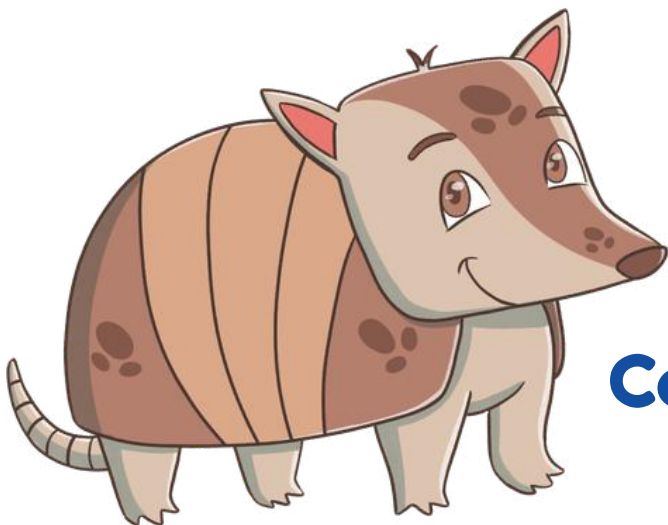
24-25

Cancellations

26

Contact

27



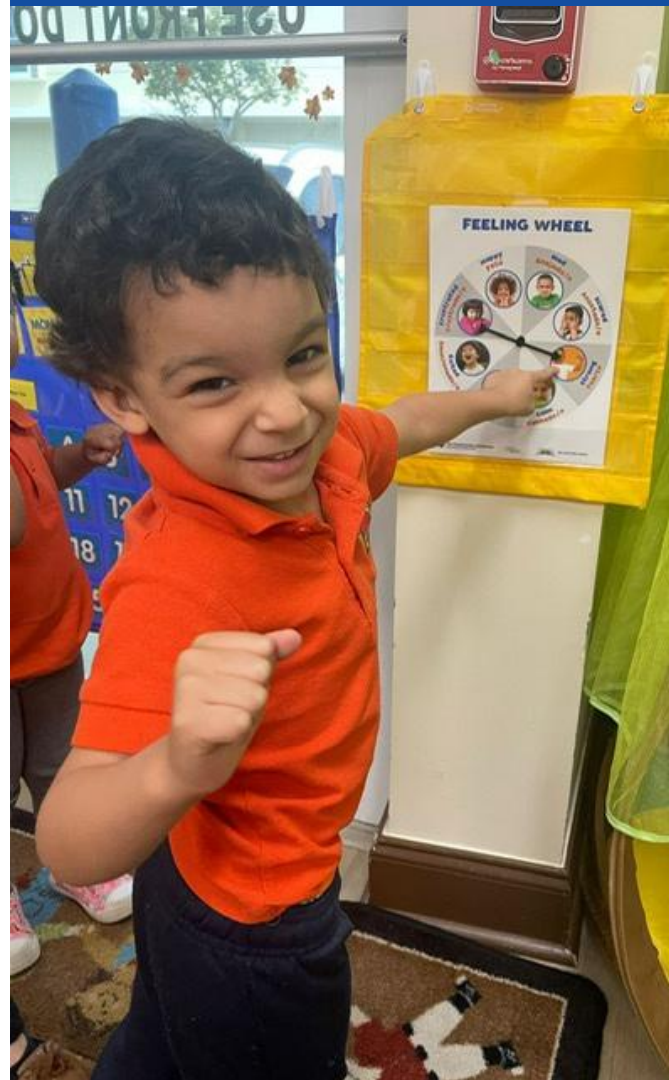
EARLY LEARNERS CALMING KIT

DISCOVERING THE EARLY LEARNERS CALMING KIT

Explore a powerful tool that helps teachers and families build nurturing relationships while supporting young children in identifying and managing emotions. Promote emotional regulation, reduce anxiety, and foster engagement and readiness to learn. (2 Hours)

FOLLOW-UP & IMPLEMENTATION SESSION

With a shared focus on social-emotional learning and behavior management, this interactive session guides educators in implementing the Early Learners Calming Kit. Through real classroom examples, participants will explore practical strategies, exchange ideas and photos, and learn how to strengthen routines, provide consistent behavior support, and embed social-emotional practices into daily interactions. (2 Hours)



EARLY LEARNERS CALMING KIT

This kit gives young children the tools they need to recognize, understand, and manage their emotions. Through engaging activities and games, teachers can help little ones build emotional awareness and develop healthy self-regulation skills that last a lifetime.

TCK-EL | English/Spanish Components | Ages 2-5 | Sole Source |



PYRAMID MODEL CLASSROOM KIT

- **DISCOVERING THE EFFECTIVENESS OF THE PYRAMID MODEL CLASSROOM KIT**
- This series connects key social-emotional skills with each classroom kit, offering practical strategies and ideas for daily classroom use.

PYRAMID MODEL PRESCHOOL CLASSROOM KIT



A ready-to-use resource designed to make implementing the Pyramid Model both simple and effective. This all-in-one kit provides the tools you need to teach critical skills like emotional literacy, self-regulation, problem-solving, friendship skills, and more.

Kit Includes:

- Tucker Turtle Kit
- Problem Solver Solution Kit
- Super Friend Kit
- Classroom Visual Display Kit
- Emotional Literacy Kit

PMC | English/Spanish | Ages 2-5 | Sole Source |

SESSION 1: CLASSROOM VISUAL DISPLAY KIT

Focus on using visuals to support schedules, transitions, and routines. Engaging children in predictable activities helps reduce challenging behaviors and promote positive participation. (2 Hours)

SESSION 2: EMOTIONAL LITERACY KIT & TUCKER TURTLE KIT

This session introduces recommended strategies to help children develop self-regulation skills. Learn how to build emotional literacy using visuals, games, songs, and stories. We'll also review and apply the Tucker Turtle Technique as an effective strategy to help children recognize and manage their emotions with age-appropriate tools. (2 Hours)

SESSION 3: PROBLEM SOLVER SOLUTION KIT & SUPER FRIEND KIT

Discover how to intentionally model and support problem-solving in the classroom. This session helps children understand that conflicts can be resolved with guidance. The "I Can Be a Super Friend" component promotes prosocial behaviors such as sharing, taking turns, playing cooperatively, and practicing patience in daily routines. (2 Hours)

SESSION 4: FOLLOW-UP & IMPLEMENTATION SESSION

Gathering a few weeks after implementing new strategies from The Pyramid Model Classroom Kit fosters networking and collaboration among early childhood educators. In this session, participants will share information, pictures, and ideas to help this community of educators enhance their practices and routines. (2 Hours)

PYRAMID MODEL INFANT TODDLER KIT

SESSION 1: DISCOVERING THE INFANT TODDLER CLASSROOM DAY: TINY STEPS, BIG MOMENTS

This session explores how to embed social-emotional learning into daily routines such as diapering, feeding, transitions, and nap time. Educators will learn to use visual cues, self-care strategies, and responsive interactions to build strong relationships, support emotional development, and guide developmentally appropriate behaviors throughout the day. (2 Hours)

SESSION 2: NURTURING SOCIAL-EMOTIONAL GROWTH: CRADLE OF COMPASSION

Explore how to embed self-regulation, empathy, and communication into everyday routines. Educators will practice using tools like push cubes, feeling faces, and photo books to guide behavior and strengthen social-emotional skills through positive, developmentally appropriate strategies. (2 Hours)

SESSION 3: DECODING THE DAILY DANCE: INFANT-TODDLER CHRONICLES

This session focuses on the proactive teaching of social-emotional skills and communication through daily routines. Participants will identify the root causes of behaviors and emotions in young children and apply responsive interventions. Strategies include using cues, visuals, Meddy Teddy, and photo books to enhance interactions and provide individualized support. (2 Hours)

SESSION 4: REFLECTIONS AND GROWTH IN SOCIAL- EMOTIONAL PRACTICES

This session fosters community through sharing successes, challenges, and insights. Participants will reflect on progress in implementing social-emotional strategies and discuss challenges faced during daily routines and interactions with infants and toddlers. (2 Hours)

PYRAMID MODEL INFANT TODDLER KIT



Designed for early childhood professionals, this research-backed toolkit provides essential resources to foster social-emotional development in infants and toddlers. It equips caregivers with proven strategies to create warm, responsive environments that build secure attachments and support each child's individual growth, establishing critical foundations for lifelong emotional health.

PMC-IT | English/Spanish | Ages 0-3 | Sole Source |

PYRAMID MODEL FAMILY CHILD CARE TOOL KIT



SESSION 1: BUILDING SOCIAL SKILLS IN HOME-BASED SETTINGS

Explore strategies for nurturing social skills in family child care settings using the Pyramid Model Tool Kit. This session helps providers structure activities that promote cooperative play, sharing, and empathy. The goal is to equip caregivers with the tools to create engaging, socially enriching experiences that support positive and harmonious interactions. (2 Hours)

SESSION 2: FOUNDATIONS OF EMOTIONAL MANAGEMENT

Discover the core components of the Pyramid Model Family Child Care Tool Kit with a focus on managing emotions. This session offers practical, evidence-based strategies to help children recognize and regulate their emotions, building resilience and emotional intelligence in a nurturing environment. (2 Hours)

SESSION 3: FOSTERING TRUST AND SAFETY IN FAMILY CHILDCARE

This session explores opportunities to create trauma-sensitive environments that promote healing and emotional safety. Using the Family Child Care Tool Kit, participants will learn to support children through mindful movement, emotional wellness activities, and friendship skill-building to foster stability, trust, and connection in home-based care. (2 Hours)

SESSION 4: FOLLOW-UP COACHING SESSION; INTEGRATING AND ENHANCING CHILDCARE PRACTICES

This final session offers a space to reflect on implementation, share successes, and address challenges. Through coaching and discussion, participants will fine-tune their use of the Family Child Care Tool Kit and receive feedback to strengthen daily routines and practices. (2 Hours)

PYRAMID MODEL FAMILY CHILD CARE TOOLKIT



Created specifically for family child care providers, this research-backed toolkit equips caregivers with resources to nurture social-emotional growth in mixed-age settings (birth to age 5).

PMC-FCC | English/Spanish | Ages 0-5 | Sole Source |

FRAME THEIR LEARNING (FTL) CLASS™ SUPPORT TOOL

SESSION 1: DISCOVERING FRAME THEIR LEARNING KIT

Explore how the FTL pocket chart system enhances daily classroom interactions through effective questioning and rich vocabulary. Learn strategies to promote math, science, and higher-order thinking skills like prediction, problem-solving, and scaffolding. (2 Hours)

SESSION 2: SPARK SCIENCE AND NURTURING EARLY MATH

Learn to use intentional questions, discovery vocabulary, and playful activities to spark curiosity and build early math and science skills. Explore strategies for teaching counting, patterns, shapes, and spatial thinking through engaging, language-rich interactions. (2 Hours)

SESSION 3: BRAIDING CHILDREN'S LITERATURE & SOCIAL-EMOTIONAL SKILLS

Discover how to extend stories into play-based activities that build emotional vocabulary and self-regulation skills. This session features engaging prompts, games, and scenarios aligned with FTL materials to support social-emotional learning. Teachers will learn to use questions before, during, and after storytime to enhance language and cognitive development. (2 Hours)

SESSION 4: COACHING AND FOLLOW-UP

Following the instructional training, this collaborative session offers a space for educators to come together, reflect on their experiences, and discuss how they've applied the Frame Their Learning strategies. Participants will share successes, explore challenges, and exchange feedback using prompts, questions, and vocabulary to deepen intentional teaching practices. (2 Hours)

FRAME THEIR LEARNING



Designed to strengthen CLASS® & CLASS 2® Instructional Support Scores, this practical tool helps teachers enhance classroom interactions with ease. Educators can quickly improve question quality, deepen student exchanges, and boost engagement while fostering higher-order thinking and better learning retention.

FTL | English/Spanish | Ages 3-5 | Sole Source |



BABY STEM BOOK

These sessions focus use the Baby STEM framework to build early STEM, language and thinking skills in infants and toddlers through everyday, curiosity-driven activities.

SESSION 1: SPARK SCIENCE AND DISCOVERY WITH BABY STEM

Learn to incorporate engaging activities, games, and routines that promote analysis, reasoning, and problem-solving in young children. Discover ways to model and expand language use to strengthen cognitive and communication development. (2 Hours)

SESSION 2: ENJOYING THE OUTDOORS WITH BABY STEM: PROMOTING FUN, EXPLORATION AND EARLY MATH THINKING

Discover ways to enhance outdoor play by using intentional prompts and math vocabulary to foster curiosity and early thinking. This session equips teachers to guide observations, spark wonder, and support math and science learning through nature-based exploration. (2 Hours)

SESSION 3: BABY STEM BRAIDING THE ARTS & STORYTIME

Art plays a vital role in early development. This session supports educators in managing art experiences within daily routines and storytime. By integrating Baby STEM prompts and questions, teachers can foster self-expression, language growth, and cognitive development through creative thinking and comprehension. (2 Hours)



Turn everyday moments into early STEM adventures! With 24 age-appropriate lessons, this guide offers simple, research-backed activities to spark curiosity and build foundational skills in babies and toddlers.

POSITIVE BEHAVIOR

PROMPT KIT

CLASS™ support tool

BUILDING POSITIVE CLASSROOMS: TOOLS AND TECHNIQUES FROM THE POSITIVE BEHAVIOR PROMPT KIT

Discover how the Positive Behavior Prompt Kit supports self-regulation, problem-solving, and smooth transitions. This training emphasizes intentional use of positive language, prompts, and questions to encourage emotional expression, build cooperative routines, and reinforce positive behaviors. Educators will leave with practical strategies to create nurturing, well-managed environments through daily interactions. (2 Hours)

MEDDY TEDDY KIT

MOVE, STRETCH, AND GROW. ENERGIZING EARLY CHILDHOOD DAYS WITH MEDDY TEDDY

This engaging session introduces educators to the benefits of mindful movement using Meddy Teddy as a playful teaching tool. Participants will explore simple stretching exercises and activities that boost physical development, enhance focus and promote emotional regulation. Educators will gain practical strategies to foster an inclusive and energized classroom environment, supporting their students' overall well being. (2 Hours)



POSITIVE BEHAVIOR PROMPT KIT



This resource provides easy-to-use prompts, questions, and vocabulary to help students build social-emotional skills.

PBP | English/Spanish | Ages 3-5 | Sole Source |



MEDDY TEDDY KIT

Meddy Teddy is a soft, bendable plush bear that helps children practice mindful movement. It comes with a book that guides kids through poses and techniques. With an internal frame for posing, Meddy Teddy serves as an interactive tool for teaching mindfulness and promoting healthy living.

MDK | English/Spanish | Ages 2-8 | Sole Source |

FLUSH WITH SUCCESS POTTY LEARNING KIT



This workshop delivers a concise guide to potty learning training in early childhood settings, focusing on essential aspects such as planning, implementation, routines, parent communication, and empathetic problem solving. Participants will gain evidence-based strategies and practical tools to facilitate a successful potty-training experience for children, families, and educators alike. (2 Hours)

FLUSH WITH SUCCESS POTTY LEARNING KIT



An evidence based system that offers educators a reliable and stress-free approach to the potty training process.

FLSK | English/Spanish | Ages 3-5 | Sole Source |



NEURODIVERSITY IN BLOOM



NEURODIVERSITY BUNDLE

This bundle of engaging book and puppet sets highlights characters with diverse experiences and ways of being. By seeing themselves and others reflected in these stories, children learn that everyone contributes something meaningful to friendships, community, and self-understanding.

Kit Includes:

- Atlas' Secret Superpower Kit
- The Energy of a Hummingbird Kit
- Finding Words Together: Maria & Sol Friendship Kit

B-AHM | English/Spanish |
Ages 3-7 | Sole Source |



NURTURING EVERY CHILD'S UNIQUE POTENTIAL SERIES

SESSION 1: ATLAS AND FRIENDS: SUPERPOWERS OF FRIENDSHIP

In this session, educators will learn how to support social-emotional growth, build confidence, and foster inclusive friendships using the Atlas and Friends Kit. Through engaging stories and hand puppets, participants will explore strategies to celebrate individuality, embrace diversity, and create a classroom where every child feels seen and valued. (2 Hours)

SESSION 2: HAVEN'S ENERGY: EMPOWERING FRIENDSHIPS THROUGH DIFFERENCE

This session focuses on guiding energetic children in forming friendships and embracing their unique strengths through the story of Haven the Hummingbird. Educators will discover practical tools to help children channel their energy positively, while promoting acceptance, confidence, and social-emotional development in inclusive learning environments. (2 Hours)

SESSION 3: MARIA AND SOL: FINDING WORDS, BUILDING BONDS

Discover how to support children with language delays by fostering connection, confidence, and communication. Using Maria and Sol's story, this session offers practical strategies to build language skills, nurture friendships, and create an inclusive classroom where every child feels heard and valued. (2 Hours)

NEURODIVERSITY OVERVIEW SESSION CELEBRATING DIVERSITY, EMPOWERING STRENGTHS WITH ATLAS AND FRIENDS

Learn how to use the Atlas and Friends characters to foster self-expression, inclusivity, and social-emotional growth. Through scripted stories and hand puppets, educators will explore strategies to help children celebrate their unique traits and build supportive, diverse friendships. (2 Hours)

CARING FOR COMMUNITIES

BUILDING CARING COMMUNITIES: EMPATHY IN ACTION

Building Caring Communities: Empathy in Action is an engaging and interactive session that supports educators and families in strengthening empathy, resilience, and meaningful connections during challenging moments. Participants explore practical social-emotional strategies for both classroom and home while experiencing the Discovery Source Caring Communities Collection, a set of supportive tools designed to foster kindness, cooperation, and emotional wellness.

(2 Hours)



CARING COMMUNITIES BUNDLE

This bundle of charming book and puppet sets provides representation for diverse family structures, encouraging acceptance and understanding. In "Sofia the Super Helper," Sofia discovers how kindness and routine can help her cope with mixed emotions and change. In "Hendrix the Brave," Hendrix's family loses their home to a natural disaster. With the help of his teacher and parents, Hendrix learns calming strategies and finds support to handle his emotions. In "Angel's Family Tree," Angel lives with his abuelo (grandpa) and struggles to appreciate the uniqueness of his family. With the support of his teacher and friends, he discovers that families come in all shapes and sizes.

B-CARE | English/Spanish | Ages 3-7 | Sole Source |

SUPPORTING FAMILIES

THE CALMING KIT FOR FAMILIES

The Early Learners Family Calming Kit is a simple, easy-to-use resource packed with powerful tools to support emotional wellness at home. Designed to help parents build strong, nurturing connections with their children, the kit offers practical strategies for recognizing, understanding, and managing emotions together. Our training session will guide parents in understanding and utilizing the kit's contents, as well as discussing practical ways to integrate it into their day-to-day moments and routines. (1 Hour)



EARLY LEARNER'S FAMILY CALMING KIT

This kit helps little ones and their caregivers navigate big emotions together. Through playful, age-appropriate strategies, preschoolers learn to identify and manage their feelings, building emotional skills that reduce stress and create calmer, happier moments at home.

FCK-EL | English/Spanish | Ages 3-5 | Sole Source |

FLUSH WITH SUCCESS FOR FAMILIES

This workshop offers a complete guide to successful potty training tailored specifically for families. We will explore practical and evidence-based strategies to make the potty-training journey smooth for both parents and children. Topics include creating a supportive home environment, establishing consistent routines, effectively communicating with your child, and handling challenges with empathy and understanding. Families will leave this session equipped with the tools and insights needed for a positive and successful potty-training experience. (1 Hour)

FLUSH WITH SUCCESS POTTY LEARNING KIT



Designed for preschoolers developing toileting independence, Flush With Success is an evidence based system that offers educators a reliable and stress-free approach to the potty training process. Packed with engaging visual aids, practical tools, and teacher guidance, this comprehensive kit supports classrooms and schools in creating a positive potty learning experience for every child.

FLSK | English/Spanish | Ages 3-5 | Sole Source |

SUPPORTING FAMILIES



MOVE, STRETCH, AND GROW WITH MEDDY TEDDY FOR FAMILIES!

Join this interactive session where families explore simple stretches and movement with Meddy Teddy to support children's physical health, focus, and emotional well-being. With hands-on demonstrations and practical tips, you'll learn easy activities to create a calm, active, and connected home environment.

(1 Hour)



PROBLEM SOLVER SOLUTION AT HOME KIT

The Problem Solver Solution At Home Kit helps children navigate peer conflicts with adult support and modeling. This session highlights the importance of families working alongside educators to build problem-solving skills through intentional practices, like narrating problems, reflecting on feelings, and prompting children to find or accept solutions. (1 Hour)



PROBLEM SOLVER SOLUTION AT HOME KIT

Empower young children to manage emotions and resolve conflicts with this engaging at-home toolkit. Featuring visual guides, a scripted story, and interactive cards, this engaging kit teaches kids to communicate needs and solve problems while helping families build these essential skills together.

PSHK | English/Spanish | Ages 2-5 | Sole Source |

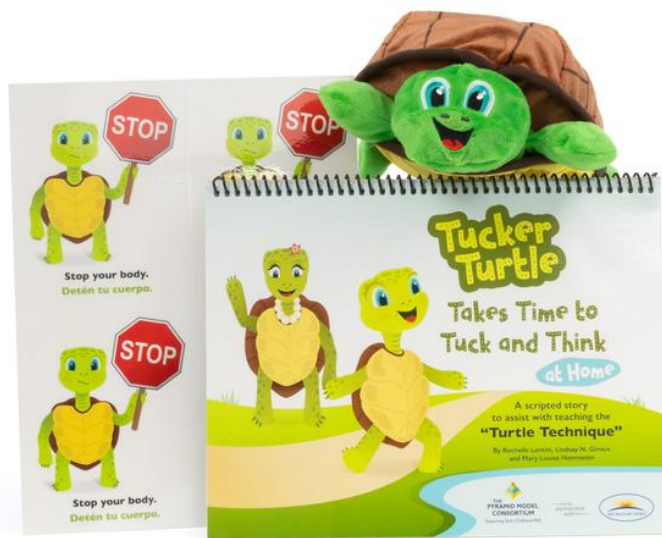


SUPPORTING FAMILIES

TUCKER TURTLE AT HOME KIT

Tucker the Turtle is a trusted resource that helps children, and their families, learn to manage big emotions like anger in calm, supportive ways. In this interactive session, families will discover how to use Tucker's scripted story, explore hands-on activities, and practice simple strategies that make calming down meaningful and playful. Together, we'll highlight how families can turn tough moments into opportunities for teaching emotional regulation and building stronger connections. (1 Hour)

TUCKER TURTLE AT HOME KIT



This at-home kit helps children apply the Turtle Technique to everyday challenges. Kids learn to pause, calm their bodies with breathing exercises, and choose thoughtful responses, turning impulsive reactions into problem-solving moments. This interactive kit makes emotional regulation an engaging daily practice.

THK | English/Spanish | Ages 2-5 | Sole Source |

EMPOWERING EARLY CHILDHOOD SPECIALISTS: DISCOVERING THE HOME VISITOR/FAMILY ENGAGEMENT KIT

Explore Pyramid Model practices for home-based care and learn how the Home Visitor/Family Engagement Kit strengthens specialist–family partnerships. Gain practical strategies to support children's social, emotional, and problem-solving skills while using tools that enhance family engagement in daily routines. (1 Hour)

HOME VISITOR/FAMILY ENGAGEMENT KIT



Designed to empower early childhood specialists working directly with families, this kit equips home visitors with carefully curated tools to strengthen children's development and educate families. Every resource is designed to spark meaningful family interactions while supporting emotional growth, social skills, and cognitive development in everyday moments.

HVK | English/Spanish | Ages 2-5 | Sole Source |



WORKSHOPS & CONFERENCES



ARE YOU ASKING THE RIGHT QUESTIONS? SUPPORTING HIGHER ORDER THINKING SKILLS IN YOUNG CHILDREN

Constructivist theories explain how young children learn and develop the presence of effective interactions. This training session is designed to support the use of questions and vocabulary, embedding those in daily routines to effectively support play. These strategies are intrinsically connected with effective strategies, CLASS™ and DAP, improving playful strategies that foster problem-solving, making predictions, and prompting thought processes, among many others. (2 Hours)

BRAIDING MENTAL HEALTH WELLNESS AND SOCIAL-EMOTIONAL SKILLS WITH CHILDREN'S LITERATURE

This session shows how to make storytime a powerful, accessible tool for mental health and social-emotional learning. Using age-appropriate books, characters, images, and symbols, we'll create play-based activities that build emotional awareness, problem-solving, and connection. Participants leave with practical games, hands-on strategies, and intentional vocabulary to weave into classroom routines and home life. (2 Hours)

WORKSHOPS & CONFERENCES

EVERYDAY MAGIC: THE EFFECTIVE MOVES ANY TEACHER COULD USE TO REDUCE INCIDENTS IN THE CLASSROOM

Boosting social-emotional skills in early childhood is essential and achievable for all age groups, and the magic is in everyday interactions. This session equips educators with practical Positive Behavior Support strategies to cut incidents: build strong relationships, tune the environment, and teach with intention. Walk away with ready-to-use materials, routines, and experiences that meet each child's needs and create a caring, inclusive community. (2 Hours)

FLUSH WITH SUCCESS

This workshop delivers a concise guide to potty learning training in early childhood settings, covering planning, implementation, routines, parent communication, and empathetic problem-solving. Participants will acquire evidence-based strategies and practical tools for a successful potty-training experience for children, families, and educators. (2 Hours)

PUTTING IT ALL TOGETHER: SKILLFULLY MANAGING CHALLENGING BEHAVIORS IN THE MOMENT

Many hours of training and workshops on handling challenging behaviors often seem to "disappear" when issues arise in the moment. Don't be disheartened; this training session will bring it all together by validating educators' concerns and integrating effective social-emotional skills into schedules and routines. This approach makes the most of available resources and prior knowledge to skillfully de-escalate behavior and effectively maintain the flow of teaching and learning. (2 Hours)



WORKSHOPS & CONFERENCES

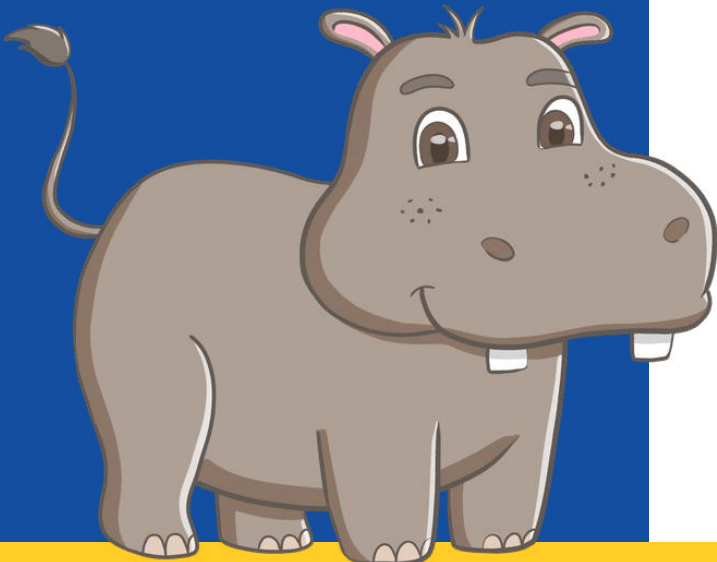
SUPPORTING SOCIAL-EMOTIONAL PRACTICES & EFFECTIVE INTERACTIONS: EARLY LEARNERS CALMING KIT

When we recognize that the children who need love most often ask for it in the most unloving ways, we can better help them manage their emotions and impulses from an early age. This workshop is thoughtfully designed to link essential social-emotional skills with effective strategies. Explore the Early Learners Calming Kit, ideas and strategies, to incorporate these techniques into daily practices. This approach supports teachers and families in helping children manage their feelings and learn calming strategies. (2 Hours)



TEACHERS AS ARCHITECTS: BUILDING THE SOCIAL BRAIN

This session links research on how early relationships shape brain architecture with practical classroom strategies. Learn how daily interactions and flexible routines build secure relationships and support children to experience, regulate, and express emotions in culturally responsive ways, while sensitive guidance fuels exploration and learning. Educators leave with intentional practices that strengthen children's mental health and core social-emotional skills. (2 Hours)



WORKSHOPS & CONFERENCES

TEACHER, TEACHER, WHAT DO I SEE?

Through practical demonstrations and infant-toddler examples, this session shows how to use cues and visuals to enhance interactions, communication, and thinking, boosting CLASS™ scores, too. We'll practice the watch-listen-engage cycle in everyday routines, bridging knowledge to application so educators leave equipped with strategies that benefit both children and the classroom environment.

(2 Hours)



VISUALS HAVE NO ATTITUDE: UPSKILL YOUR TEACHING PRACTICES, ACHIEVING AND EXCEEDING CLASS™ SCORES; SHARPEN YOUR TOOLBOX!

Cues and visuals amplify learning for adults and children, beyond words, through multi-sensory engagement. This session shows how to maximize the use of cues/visuals to drive best practices and CLASS™-aligned interactions, with practical activities and concrete tools you can plug into daily routines to sharpen your toolbox. (2 Hours)



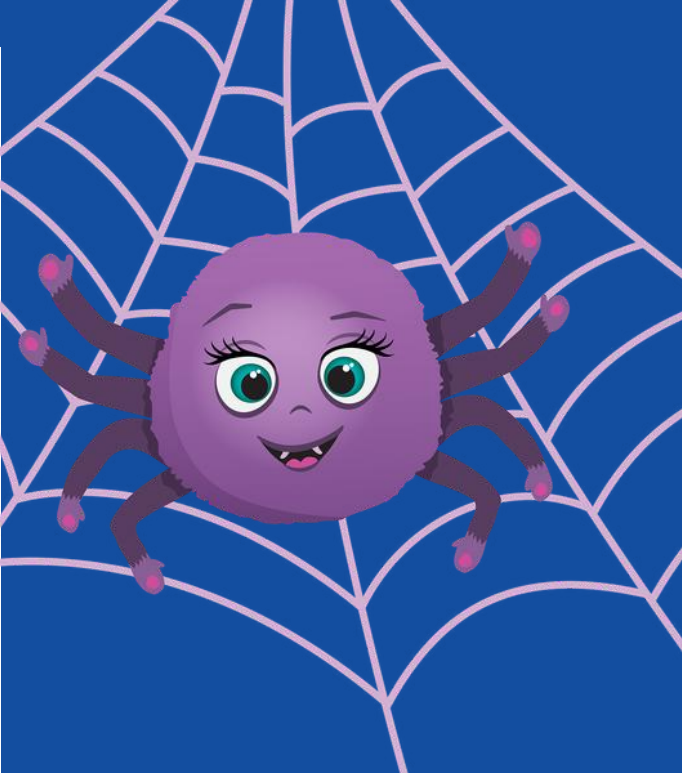
WORKSHOPS & CONFERENCES

BEYOND THE STORY: ADVANCING LANGUAGE AND LITERACY THROUGH INTENTIONAL BOOK EXPERIENCES

"Story time is more than a routine, it's a chance to spark language, thinking, and connection. This session explores how to use books intentionally to build vocabulary, comprehension, and higher-order thinking, and to extend stories into hands-on explorations that link themes to richer language and children's interests. Participants leave with practical tools to make story time a rich, purposeful learning experience. (2 Hours)

LITTLE READERS, BIG THINKERS: LAYING THE LITERACY FOUNDATION IN INFANT-TODDLER CLASSROOMS

In the earliest years, children build the foundations of language, communication, and thinking. This interactive session models engaging book experiences that spark curiosity, expand vocabulary, and strengthen emotional connection. Learn easy adaptations—voice variation, puppets, and sensory props, to turn diapering, mealtime, and circle into rich literacy moments. Make books a daily springboard for lifelong learning. (2 Hours)



KEYNOTE SESSIONS

Each event is unique; keynote length and pricing vary based on factors such as audience, format, travel, and customization. We are happy to provide a tailored quote to meet your specific requirements or needs.

WHOLE HEARTS, WHOLE MINDS: EMBRACING EVERY CHILD IN EARLY EDUCATION

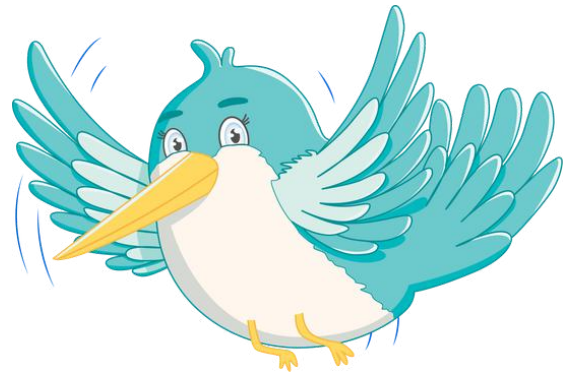
Every child is a masterpiece in the making, full of potential, uniqueness, and wonder. This keynote invites educators to see the whole child, using the playful metaphor of a birthday cake. Each layer; cognitive, physical, language, and social-emotional matters, with social-emotional growth as the "frosting" that holds it all together. Through stories, reflection, and practical insights, we'll celebrate the magic of everyday interactions and the joy of supporting children, one thoughtful slice at a time. (2 Hours)

IN STEP WITH EVERY CHILD: THE DANCE BEHIND EARLY CHILDHOOD BEHAVIOR

Caring for young children is like learning a dance, each child with their own rhythm, pace, and personality. As educators, we are their partners: sometimes leading, sometimes following, always listening for cues. This keynote explores how children communicate through behavior and how our responses can build connection. Grounded in evidence-based practices, it highlights the use of environment, visuals, movement, and sensory awareness to co-regulate, build trust, and nurture emotional growth. Through stories, reflection, and practical tools, participants will leave inspired to embrace the "daily dance" of early care as an opportunity for connection and growth. (2 Hours)



TRAIN THE TRAINER



A "Train the Trainer" session equips participants with the knowledge and strategies to effectively deliver The Discovery Source sessions. It covers session content, adaptation for audiences, practical use of materials, and techniques to engage adult learners. Participants receive a complete set of training materials, including slide decks and handouts, ensuring they are prepared to teach the content in their organizations. (4 - 6 Hours)

Why Choose “Train the Trainer” Professional Development?

- **Build Internal Expertise**
Empower your own staff to become confident facilitators and subject-matter leaders.
- **Scalable Across Locations and Teams**
Easily train large or geographically dispersed teams by deploying your certified internal trainers.
- **Boost Staff Morale and Retention**
Recognizing staff as trainers is a leadership opportunity that fosters professional growth and loyalty.
- **Peer-to-Peer Influence**
People often learn better from trusted colleagues—they can ask questions in a safe, familiar setting.
- **Stronger Implementation of Practices**
Trainers embedded in your organization can provide real-time support, modeling, and coaching after training sessions.

PRICING

Products sold separately

Virtual

2 Hour

\$1,500

1 Hour

\$1,000

(Supporting Families Sessions)

In Person

2 Hour

\$2,250*

Train The Trainer

Price per 2 hours. Dependent on topic. 40 participants maximum.

Virtual

\$2,500

In Person

\$2,850*

***Plus travel costs**



FAQ



General Questions

What topics do your trainings cover?

Our sessions cover social-emotional learning, Pyramid Model practices, classroom strategies, trauma-informed care, and more.

Who leads the trainings?

Our professional development is led by experienced educators and certified trainers who know their stuff and know how to keep it engaging!

Can we customize a training to fit our needs?

Absolutely! We tailor trainings to your goals, staff experience, and specific challenges.

Are trainings available in Spanish?

Yes! We offer all of our trainings in English or Spanish—just let us know your preference.

Format & Logistics

Are trainings offered Virtually or In Person?

Both! We offer sessions via Zoom or on-site—whichever works best for your team.

What do we need for an In Person session?

Just a space that comfortably fits your group, and a quick chat about AV setup and logistics. We'll take care of everything else!

How many participants can attend?

Up to 100 participants per regular session, whether Virtual or In Person, to keep the experience interactive and engaging. Train the Trainer limited to 40 max.

FAQ



Kits & Materials

Are materials or kits included?

Kits are sold separately—but don't worry, we can ship them directly to your attendees.

Do trainings come with handouts or digital resources?

Yes! We provide helpful takeaways, digital downloads, and sometimes exclusive extras tied to your session. (Presentation slide deck excluded.)

Scheduling & Booking

How do we schedule a training?

Just reach out to your TDS contact or email us—we'll help set everything up.

Do you offer ongoing or series-based trainings?

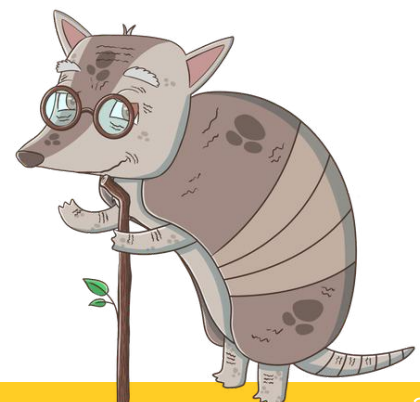
We do! Many programs benefit from multi-session learning over time. Let's build a plan that works for you.

How far in advance should we book?

As early as possible—especially for In Person sessions, as calendars fill quickly!

How can we pay for training?

We accept Purchase Orders, Checks, and Credit Cards—whatever works best for your system.



Professional Development Cancellation Policy Due to Inclement Weather or Emergency

In the event of inclement weather, a national or local emergency, or any other unforeseen circumstance that affects scheduled services, The Discovery Source's Professional Development Cancellation Policy is as follows:

Client-Initiated Cancellations

If the client (company, organization, or entity receiving services) cancels a scheduled training session due to inclement weather, emergency, or other reasons, The Discovery Source will make reasonable efforts to reschedule at a mutually agreed-upon time. If an event is canceled, any payment made will be credited towards rescheduling the same session or booking another session with The Discovery Source. Additional travel costs may apply if a client cancels for reasons unrelated to weather or emergency. These costs will be assessed and discussed on a case-by-case basis.

The Discovery Source-Initiated Cancellations

If The Discovery Source must cancel a scheduled training session due to inclement weather, emergency, or unforeseen circumstances, we will notify the client as soon as possible.

We will make every effort to reschedule the service at a mutually agreed-upon time. If rescheduling is not feasible within the next 90 days, any prepayment made will be credited towards another session with The Discovery Source, valid for up to 180 days from the originally scheduled date

Extended Closures or Emergency Declarations

In the event of prolonged closures or emergency declarations that impact the delivery of training services, both parties will work together to identify a suitable response, which may include rescheduling, exploring alternative service options, or crediting the payment towards future services.

Force Majeure

In the event of Force Majeure, including acts of God, epidemics, natural disasters, war, terrorism, or government actions, if these prevent fulfilling contractual obligations, The Discovery Source and the client will attempt to reschedule services. If rescheduling proves unfeasible, the payment will be credited towards future training services.

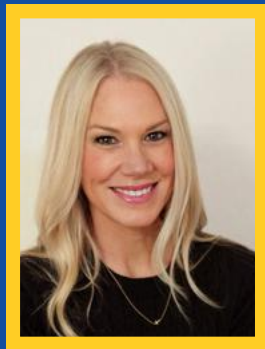
CONTACT US



SANDY AMPUDIA

Director of Professional Development

✉ Sandy@thediscoverysource.com



TRACEY WOODS

Professional Development Coordinator

✉ Tracey@thediscoverysource.com



THEDISCOVERYSOURCE.COM



Learn More

