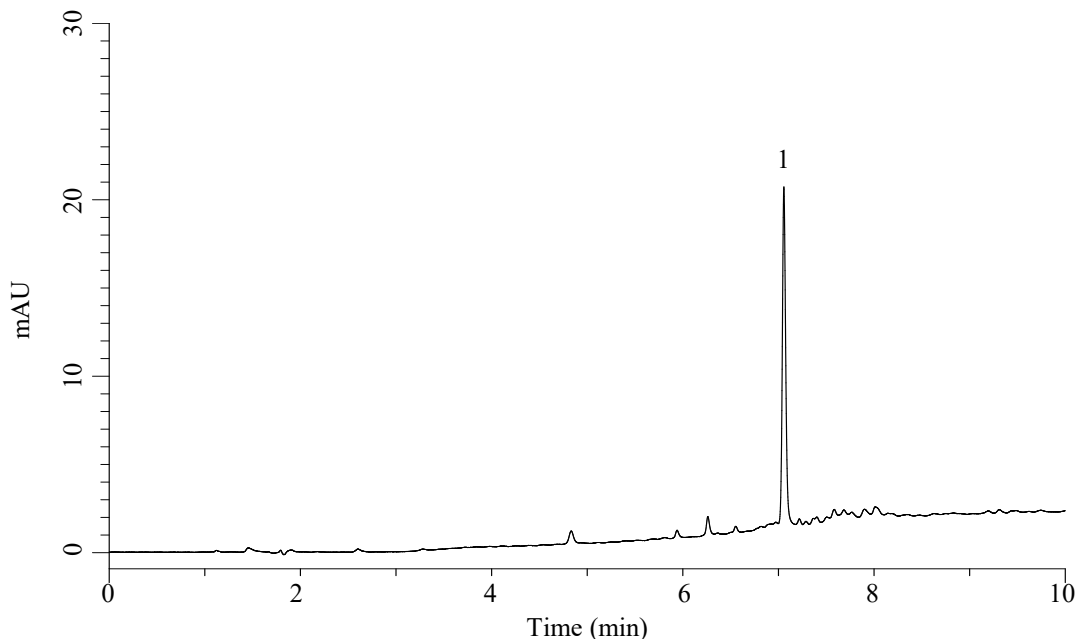


# InertSearch for LC

Inertsil Applications

## Analysis of Insulin Chain B Oxidized

Data No. LB723-0806



### Conditions

**System** : Chromaster HPLC system (HITACHI)  
**Column** : InertSustain AX-C18 (GL Sciences Inc.)  
(3  $\mu$  m, 150 x 2.1 mm I.D.)  
**Column Cat. No.** : 5020-91039  
**Eluent** : A) (10 mM HCOONH<sub>4</sub> + 0.1% HCOOH)  
in (CH<sub>3</sub>CN/H<sub>2</sub>O = 90/10, v/v)  
B) (10 mM HCOONH<sub>4</sub> + 0.1% HCOOH) in H<sub>2</sub>O

### Analyte:

1. Insulin Chain B Oxidized from bovine pancreas  
(1,000 mg/L, Mw  $\approx$  3,500)

Time (min)	A (Vol%)	B (Vol%)
0.0	2	98
10.0	80	20

**Flow Rate** : 0.3 mL/min  
**Col. Temp.** : 40 °C  
**Detection** : UV 280 nm  
**Injection Vol.** : 2  $\mu$  L