

## 2750 Sliding Door System





# 2750 Sliding Door System

## Features and Benefits

### ■ Frame

- 5  $\frac{15}{16}$ " welded main frame with integral pre-punched nailing flange with either a 1" or 1 $\frac{1}{2}$ " set back.
- Sloped aluminum anodized threshold cover.
- Integrated screen channel in the frame with aluminum screen track for ease of operation and long term durability.
- Anodized aluminum track.

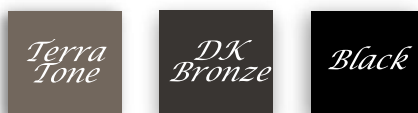
### ■ Sash

- Fully welded 2 $\frac{3}{4}$ " x 1 $\frac{3}{4}$ " vinyl sash with internal aluminum reinforcement.
- Standard  $\frac{7}{8}$ " IG, or a 1 $\frac{1}{4}$ " triple insulated glass system.
- Many high energy-efficient glass options for the most extreme temperature sensitive regions.
- Standard glazing, Cardinal™ LoE 366® dual glazed tempered glass with warm-edge spacer system.
- All stiles are metal reinforced for extreme wind load resistance.
- Unique internal drainage system to minimize risk of seal failures.
- Interior glazed for better performance.
- Stainless steel roller housing and composite wheels with side adjustment, AAMA rated to carry a 500 lb panel for 10,000 cycles without change to adjustment.
- Truth's Anti-Slam and double point lock. Meets the most stringent forced entry resistance testing.

### ■ Extruded Vinyl Colors



### ■ Optional Exterior Coated Stocked Colors



### ■ Hardware

Hardware colors: white, beige, black powder coat, and brushed chrome



Standard

Signature optional upgrade



**WIN/DOR**®

[www.windorsystems.com](http://www.windorsystems.com)