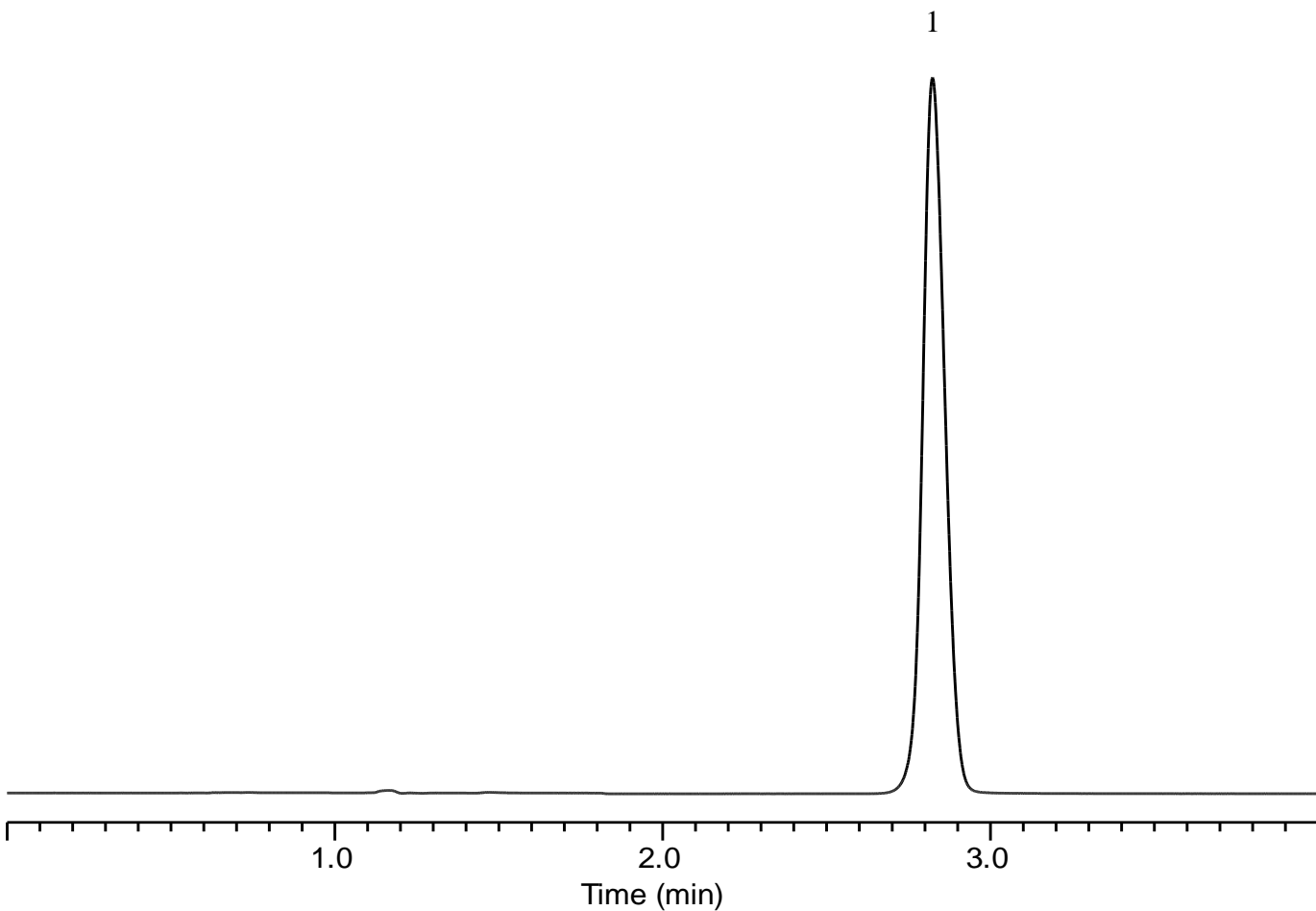


InertSearch™ for LC

Inertsil™ Applications

Analysis of Nortriptyline

Data No. LB610-0806



Conditions

Column : InertSustain Cyano (5 μ m, 250 x 4.6 mm I.D.)

Column Cat. No. : 5020-89277

Eluent : A) CH₃CN
B) CH₃OH
C) Buffer*
A/B/C = 40/43/17, v/v/v

Flow rate : 2.5 mL/min

Col. Temp. : 40 °C

Detection : UV 239 nm

Injection Vol. : 10 μ L

Sample : Standard

Analyte:

1. Nortriptyline 380 mg/L

Theoretical plates (1) : 7,988

Symmetry factor (1) : 1.10

* Dissolve 1.63 g of monobasic potassium phosphate in 1 L of water, and adjust with 1 N potassium hydroxide to a pH of 6.7.