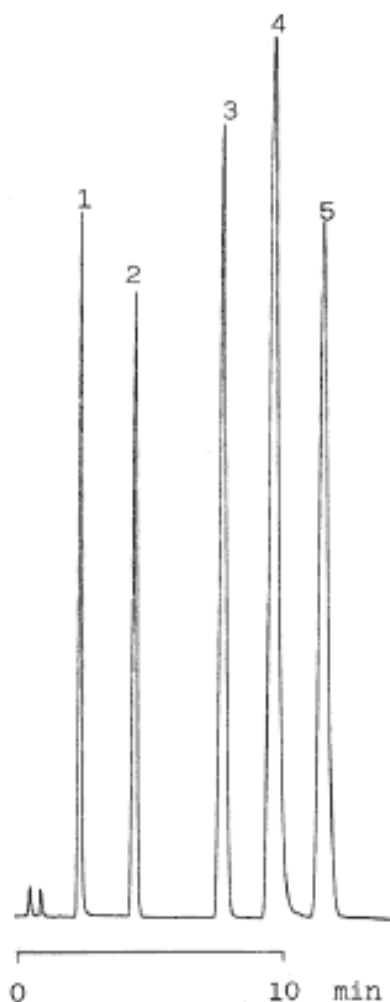


Metal complexes of Acetylacetone

Data No. LA412-0000



Column : Inertsil ODS-2
5µm PEEK
150 × 4.6 mm I.D.

Column Cat. No. : 5020-11200

Eluent : CH₃N/H₂O/0.3 % Acetylacetone
= 30/70/0.3

Flow rate : 1.0 mL/min.

Col. Temp. : 40°C

Detection : UV 330 nm

Injection Vol. :

Sample : Metal complex of acetylacetone

Solutes : 1. Cu (acac)₂
2. Acetophenone
3. Cr (acac)₃
4. Fe (acac)₃
5. Pd (acac)₃