

# *Bento Dinner Plates*

*by MyGlassStudio*



Bento Dinner Plates  
Needed Now - Used Forever



## Bento Dinner Plates

A dinner set  
in the form of a bento box

### Four Basics

Covered Dinner Plates  
Super-Hygienic Material  
Versatility in Hotel Operations  
Needed Now - Used Forever

### One Idea

Reopen with Safety  
Reopen in Style  
Re-build Trust

# *Delight First Guests*

## Meal Guarded... Meal Enjoyed...

Just like the West taught the East how to serve food on a round open plate, the East can teach the West how to serve food in a box.

As opposed to the open dinner plate, the Bento Dinner Plate is a container that **guards food** and provides the **sense of safety** and **peace of mind** that guests value without compromising the sense of luxury.

Delight your “first guests” through the sense of Safety and Creativity. They, in turn, will encourage those that are more Covid - anxious to return back to restaurants faster.

### Product Specifications

Nonporous Surface - Glass is the Most Hygienic Tableware Material  
Totally Stackable (Covers & Plates)

Dishwasher Safe

Heat-proof to 120°C

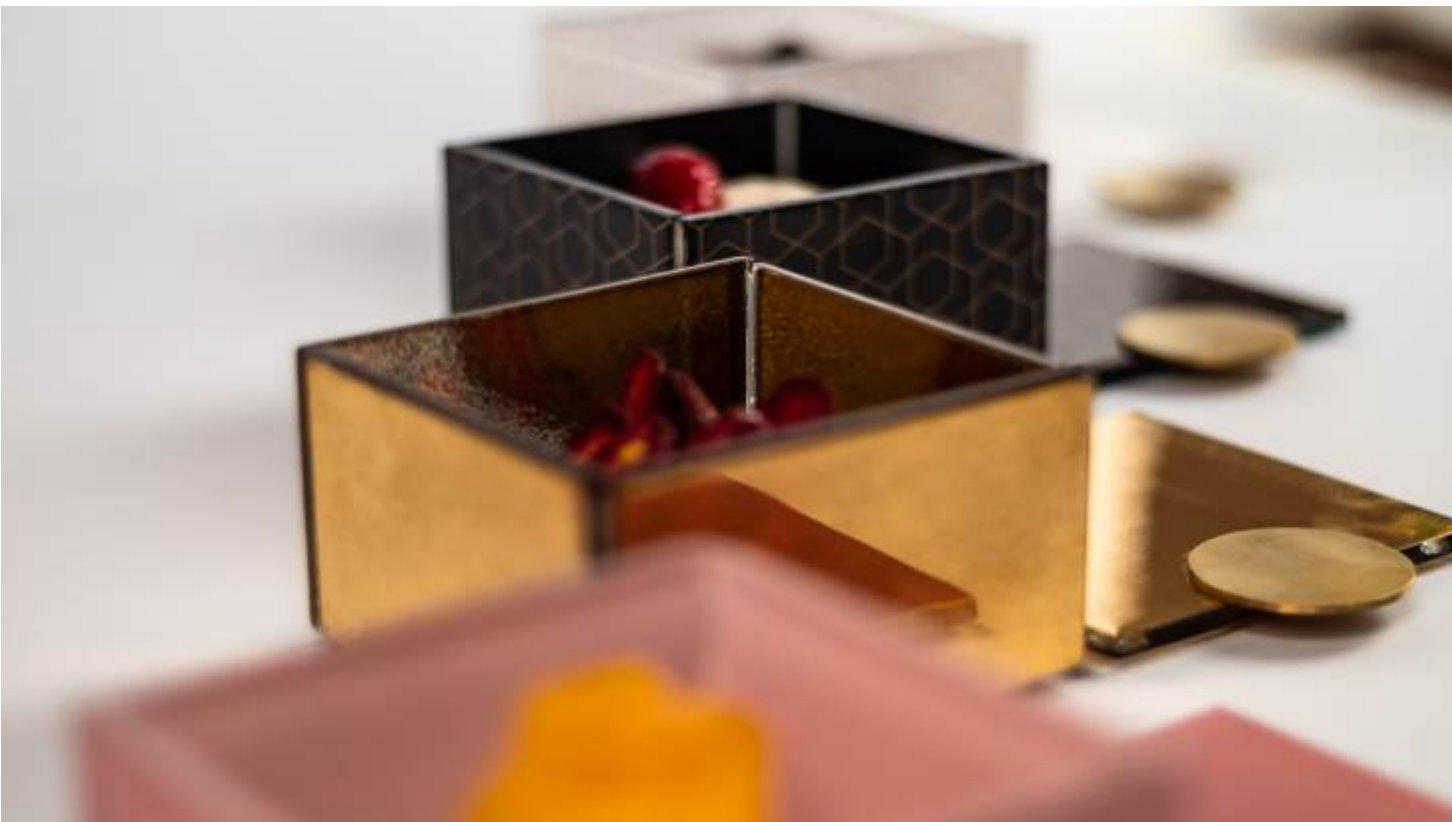
Ultra-Durable - Anti-Chipping Guarantee



# *Is Your Food Service*



Code: S5-S6-04-SR21, Small Rectangular Bento Dinner Plate, Gold Plated



Code: S5-S6-03-SR21, Small Square Bento Dinner Plate in 4 colors

# *Foodstagrammable?*

## In-Room **Fine Dining**

In contrast to disposable delivery packaging made of plastic or cardboard, the Bento Dinner Plate **infuses “Fine Dining” into “In-Room Dining”**. It will not disappoint guests who expect both Luxury and Safety.

Compared to traditional room service metal covers which are associated with “old style” hospitality service, the Bento Dinner Plate is etiquette in 5-star quality infused with modern sensitivity. A truly modern “service under the bell” experience.

A Foodstagrammable “lunch box” presentation of In-Room Dining will surprise post-Covid age “Explorers”. They will “See and Feel Safety”. They will post it on Social. They will encourage others and will help boost travel.

The Bento Dinner Plate: A new canvas for new plating trends. A new vision of the covered dinner plate.

## *Bento Dinner Plates Main Features*



Code: S5-S6-04-SS4220370, Small Rectangular Bento Dinner Plate, Pink with White Inner Side





# Hygienic-Chic Glass Bento Dinner Plates

## In Food Service, the Perception of

**Glass is absolutely non-porous.** It is not only easily sanitized, but it is also perceived by guests as “clean”. In general, it is the most hygienic material that can be used in food service. Materials with porous surfaces (such as wood, slate or unglazed ceramics), are hard or next to impossible to disinfect. MyGlassStudio bento dinner plates are also Chlorine Bleach resistant (EPA approved disinfectant) and it won't decolorize our glazes as it happens in low fired glazes.

**Rough Ceramics** such as earthenware or stoneware, have uneven and porous surfaces which are hard to deep clean and sanitize, especially unglazed or matte glazed ceramics.

**Melamine**, is not resistant to Chlorine Bleach disinfectants.

**Lacquerware** and wood are impossible to dishwasher and are not resistant to Chlorine Bleach. Wood is also extremely porous.

**Plastic** or acrylic lunch boxes (such as Tupperware) are hygienic but plastic can hardly give a sense of luxury and elegance.

**Porcelain**, when chipped, it reveals the rough, unglazed clay body. Although inappropriate, it was common practice to use chipped dishes in food service. In the post-Covid world however, serving with chipped porcelain will be considered “Unsafe” by guests.

**Shrink Wrap** is good to protect food in room service... but not our Oceans.

	Glass	Rough Ceramics *	Porcelain
Nonporous Surface (Porous surfaces are hard or impossible to disinfect)	yes	no	yes
Chlorine Bleach Resistant (EPA Approved Disinfectants)	yes	no	no (decolorizes)
Dishwasher Safe	yes	yes	yes
Eco Friendly	yes	yes	yes

\* Earthenware/Stoneware (unglazed & matte glaze ceramics)

\*\* Rustic Style Melamine

# of Safety, begins with the Material



Code: S5-S6-03-X40, Small Square Bento Dinner Plate

Porcelain	Melamine **	Lacquerware	Plastics	Wood
yes	no	yes	yes	no
no (recolorizes glazes)	no	no	yes	no
yes	yes	no	yes	no
yes	no	yes	no	yes

# Back of the House B

Specificat

## Kitchen storage of bento plates

You can stack bento plates without their covers, one on top of the other up to a height of 10-15 pieces and save space in storage.



## Kitchen storage of bento covers

You can stack bento covers, one on top of the other up to a height of 10-15 pieces. You can also stack them sideways. bento covers are stored efficiently.



## Bumpers

Bumpers enable bentos to "lock" one on top of another when without cover. When with cover, bumpers lift the boxes above the handles enabling to stack closed boxes. Bumpers will prevent bento plates from sliding.



## Food safe adhesive ass

We use Food Grade adhesive in the ass material used in pacifiers for babies. It is non-toxic and environmentally friendly.



# Bento Dinner Plates

...ions to Last Forever. Specifications for Standard Hotel Operation.

## Bento covers

...of the other up to a height of 30  
...ys. Compared to glass domes or metal  
...ly and in volume.



## Food storage inside the bento plates

Bento plates optimize food storage. For instance, storing reception canapes in trays vs bento plates: you can store more canapes in the refrigerator, warmer or shelf in stacked bento plates than in trays. And they also perform as a pre-set meal!



## Assembly

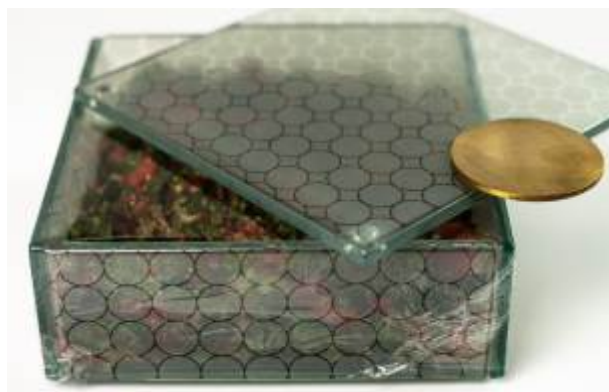
...sembly of our bento. It's the same

...ndly.



## Cling film meals under cover & stack them

Keep food fresh in the refrigerator. Use the Bento Dinner Plate as meal prep without having to think about disarranging proper plating. Optimize you meal prep storage.



# Back of the House B

Specificat

## Ultra-Durable with Anti-Chipping Guarantee

All our products come with an anti-chipping guarantee and are extremely durable. If you are convinced that glass is a fragile material, please see our videos on our YouTube channel:

The hammer test: <https://youtu.be/WaJ8Pgdmxvg>

Anti chipping Guarantee: <https://youtu.be/OxPKzDfaFDc>

Stress Test: <https://youtu.be/70nJXamyKQ4>

It's not the material, it's the quality of manufacturing that makes it durable. At MyGlassStudio, we do not cut corners in production to reduce costs and offer better prices. **As with all things in life, with glass you get what you pay for.**

Compared to porcelain, glass does not have a "body" and a "glaze". Glass and decor (color) are fused into **one single body** in our production facility.



## Weight is Equal or Less to that of Ceramics

All our products are "light weight". Weight will not exceed the weight of a porcelain or ceramic plate of a similar shape or size.

See the video here: <https://youtu.be/z5Ztd6fHtRE>

## Packaging is Tested with the 1m Drop Test

All products are packaged in 5 layer 25ECW1 quality paper masterpack. Inside the carton, products are separated by a double bubble wrap of 100gr.

<https://youtu.be/i52I52UOWZM>



## Oven-Safe & Heat Retentive

Bento plates can be heated to up to 120°C. Furthermore, glass retains heat just like ceramic. It takes 10-15 minutes for the temperature to drop from 120°C to 100°C. See video here: <https://youtu.be/OTzjyiA>

All products fit in the hot box.

All bento dinner plates are also freezer safe.



## Dishwasher Safe & Chipping Resistant

Bento plates are dishwasher safe to up to 120°C. Furthermore, colors will not decolorize with dishwasher use. This happens with lacquerware, melamine or plastic.



## Resistant to Cutlery - Tarnish Resistant

Colors are fused with the glass body and do not chip off. This is not the case with lacquerware (including stainless steel) with carbon steel or aluminum scale.

# Bento Dinner Plates

ions to Last Forever. Specifications for Standard Hotel Operation.

## ention

0°C / 250°F for more than 8 hours.  
ceramics. It takes approximately 20  
m 100°C to 40°C.  
Z8ME

safe up to -20oC.



## orine Bleach Resistant

to 90°C / 190°F.  
with chlorine bleach baths as it  
or low fired glazes in ceramics.



## Toughened Glass Surface

and cannot be inscribed from cutlery  
up to 52% on the Rockwell Hardness

## Leak Proof

Bento plates are leak proof and you can serve soup.



## Colors Will Never Peel Off

We fire colors in high temperatures. Therefore, colors will fuse INTO the glass body and will not be a separate layer "on top" of the glass body. Colors are microwave safe with the exception of Gold and Silver which are pure gold and silver. Colors are dishwasher resistant.

## Non Toxic - Lead & Cadmium Free Colors

Colors do not contain toxic ingredients such as Lead or Cadmium (we pass California and Japan regulations for tableware that come in contact with food).



## Citric Acid Resistant Colors

Bento plates are citric acid resistant to food ingredients that contain up to 4% citric acid such as vinegar, passion fruit, lemon etc.

# *The Bento Dinner Plate Collection*



**Chefs** Cook as Usual & Plate with Creativity





Guests Perceive Safety & Dine in Style

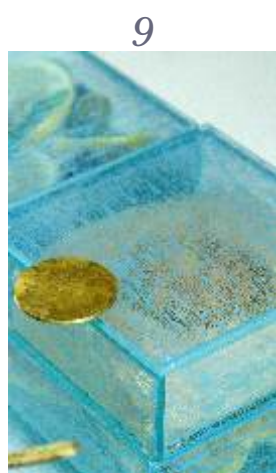
# The Color Collection

## 11 Colors to Mix & Match

1. Precious Liquid Gold, (Code: SR21)
2. Liquorice Black (with Chinese Red inner side), (Code: SS3843)
3. Metallic Dark Salmon Pink (with white inner side), (Code: SS4220370)
4. Metallic Artichoke Gray (with dusty gold inner side), (Code: SS02910450)
5. Metallic Tobacco Brown with gold Art Deco Pattern, (Code: DMZ026021)
6. White with gold Art Deco Pattern, (Code: RHZ422021)
7. Black with gold Art Deco Pattern, (Code: RHZ43021)



8. White Crackling Pattern, (Code: CR422)
9. Niagara Blue Crackling Pattern, (Code: CR123)
10. Clear Transparent, (Code: X40)
11. Pure Milk White, (Code: SR422)



# Covers, with solid brass handle



5



4



6

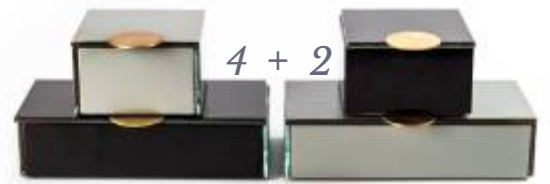
2



3



1



# *Colors of the Year 2021*

Trends 2021 by MyGlassStudio



Ultim

This addition to our bento dinner plate collection is one of the first dinnerware product launches with the Pantone colors 2021. The Bento Dinner Plate was redesigned for an aspirational and rock-solid New Year. Email us at [info@myglasstudio.com](mailto:info@myglasstudio.com)

Illuminating Yellow

hate Gray

A MANPULO



# *Is the Bento Dinner Plate Customizable?*

## Case Study: Amanpulo

MyGlassStudio is the leader in the bespoke tableware category. We design “Only and Exactly what You Need”.

It is no different with the Bento Dinner Plate Collection. You can select from among 200 colors, as well as from a variety of patterns and we can deliver a customized product based on **only and exactly what you need**.

This is the case of Amanpulo. The collection we designed in collaboration with the customer, reflects the essence of the property.

At the same time the property can be proud that these products are made only and exclusively for them.



# *The 5 Bento Dinner Plates*

## Tiered or Stacked in 2 Pairs

### Small Pair



Small Square Plate with Cover

Dimensions: 11x11cm/4.3x4.3in  
Height: 6.5cm/2.6in  
Capacity: 550ml/18.6oz  
Weight: 610gr/1.3lbs  
Code: S5-S6-03



Small Rectangular Plate with Cover

Dimensions: 22x11cm/8.7x4.3in  
Height: 5.5cm/2.2in  
Capacity: 945ml/32oz  
Weight: 980gr/2.2lbs  
Code: S5-S6-04

### Large Pair



Large Square Plate with Cover

Dimensions: 14x14cm/5.5x5.5in  
Height: 5.5cm/2.2in  
Capacity: 770ml/26oz  
Weight: 810gr/1.8lbs  
Code: S5-S6-01



Large Rectangular Plate with Cover

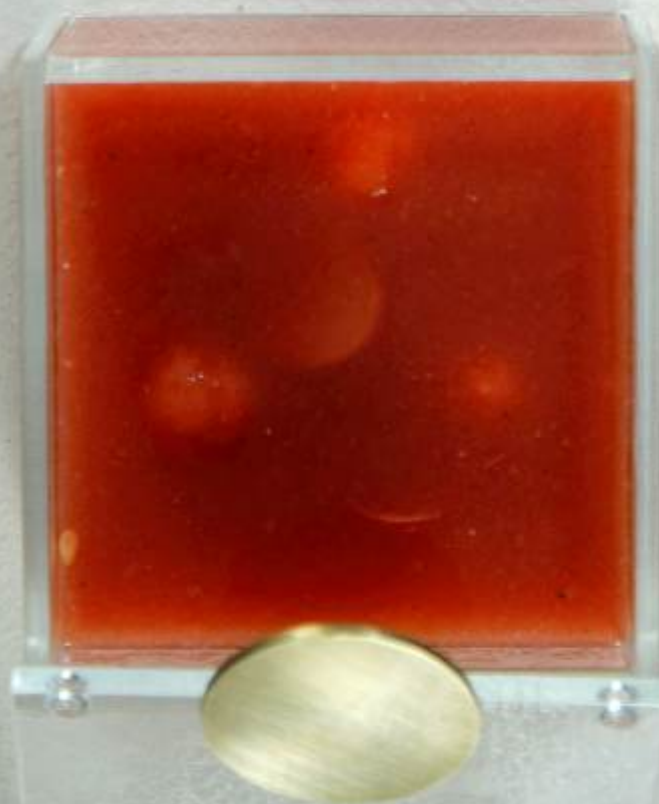
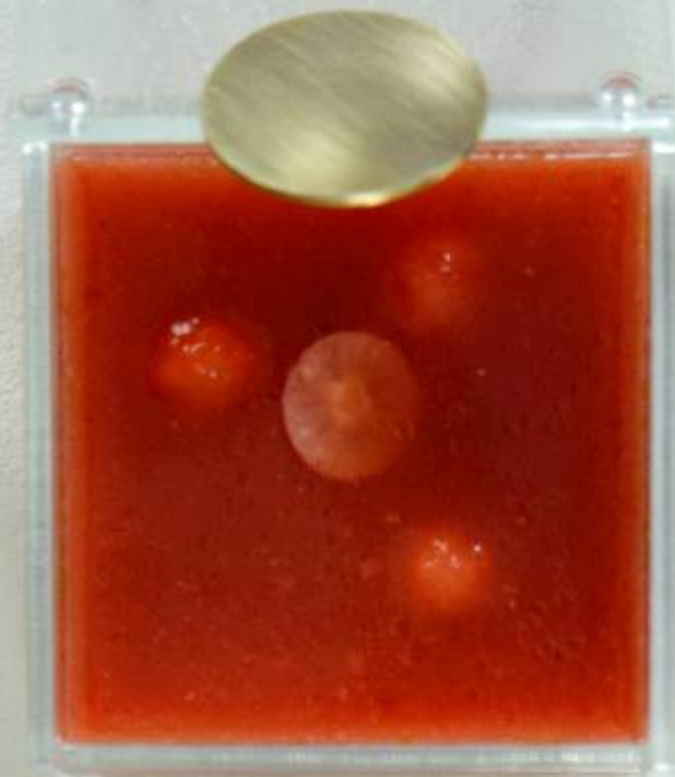
Dimensions: 28x14cm/11x5.5in  
Height: 6cm/2.4in  
Capacity: 1.750ml/59.2oz  
Weight: 1480gr/3.3lbs  
Code: S5-S6-02



Long Rectangle Plate with Cover

Dimensions: 28x7cm/11x2.8in  
Height: 4cm/1.6in  
Capacity: 480ml/16.2oz  
Weight: 760gr/1.7lbs  
Code: SC-17-16





# The *Bento* Dinner

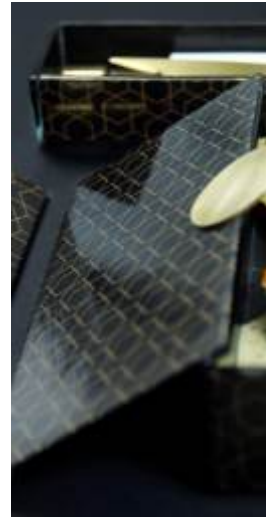
## A New



Small square plate 11x11cm  
Miso Soup



Square basket  
High tea presentation



Small rectangular plate  
Salmon trout fillet with



Small square plate 11x11cm  
Miso Soup and a portion of rice



Large square plate 14x14cm  
Ravioli with frog legs and Einkorn risotto



Large rectangular plate  
Caviar presentation



Long rectangle appetizer plate 28x7cm  
Octopus with baby vegetables



Small rectangular plate 22x11cm  
Yogurt cake with almond marzipan



Small rectangular plate  
Spaghetti allo scoglio

# Plate Collection

## Canvas for New Plating Trends



Plate 22x11cm  
with strawberries



Square basket  
Nigiri set in 3 tiers



Large rectangular plate 28x14cm  
Indian Biryani



Plate 28x14cm



Small rectangular plate 22x11cm  
Sea bass fillet with rice



Large square plate 14x14cm  
Appetizer shrimp with corn sauce



Plate 22x11cm



Large rectangular plate 28x14cm  
Mediterranean mussels

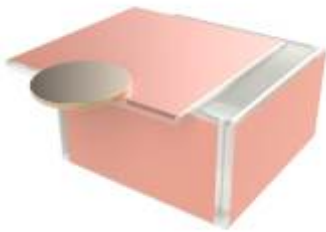


Small square plate 11x11cm  
Asparagus soup

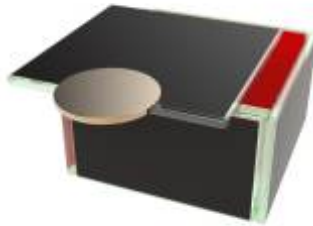
### Small Square Plate / Soup Bowl

11x11cm / 4.3x4.3in, Height: 6,5cm / 2.5in, Capacity: 550ml / 18.6oz

The small square plate is perfect to serve soups, side dishes such as market vegetables, side green salad, mashed potatoes and classic french fries. Due to its depth, you can present a bread bun to accompany a salad or a soup. The small square plate is also ideal for serving desserts such as brownies, cookies, selection of ice cream or seasonal fruits. You can stack two square bentos next to each other on top of the rectangular one. In this way, you can present stir fried vegetables in the large one and have the rice and salad in the small square ones. For the bar lounge, it is great for snacks.



S5-S6-03-SS4220370



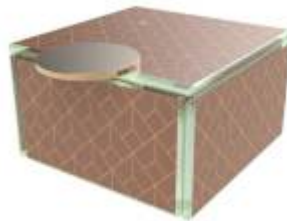
S5-S6-03-SS3843



S5-S6-03-SS02910450



S5-S6-03-RHZ422021



S5-S6-03-DMZ026021



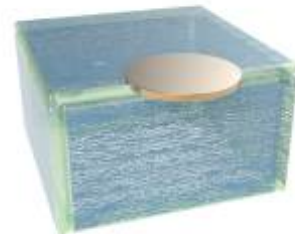
S5-S6-03-RHZ43021



S5-S6-03-CR422



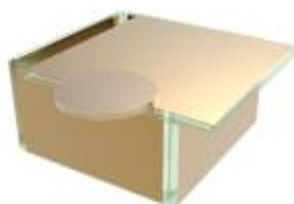
S5-S6-03-X40



S5-S6-03-CR123



S5-S6-03-SR422



S5-S6-03-SR21

# Plate Collection

## 1 Pair

### Small Rectangular Plate

22x11cm / 8.7x4.3in, Height: 5,5cm / 2.7in, Capacity: 945ml / 32oz

The perfect size for a pasta portion, small club sandwich, veggie wraps or Pad Thai. Serve cavatelli or spaghetti and enclose the meal in a protected box that will be delivered to your guest "touchless". Your guests will for sure appreciate the innovation! The small rectangular bento dinner plate is ideal for breakfast served in the room: tier two boxes (one with pancakes and one with eggs with bacon). You have it: a bento box that is a joy to use and encourages an order of consumption. In bars and lounges this is the perfect large appetizer plate to serve tempura and finger food in general. With its cover it also very useful as a lunch box for meeting rooms and board rooms for a light lunch.



S5-S6-04-SS4220370



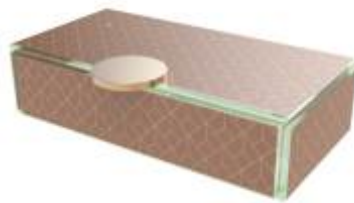
S5-S6-04-SS3843



S5-S6-04-SS02910450



S5-S6-04-RHZ422021



S5-S6-04-DMZ026021



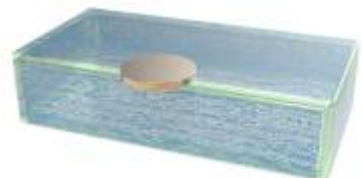
S5-S6-04-RHZ43021



S5-S6-04-CR422



S5-S6-04-X40



S5-S6-04-CR123



S5-S6-04-SR422



S5-S6-04-SR21

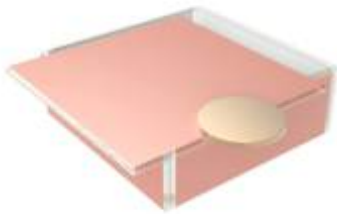
# The *Bento* Dinner

Large

## Large Square Plate

14x14cm / 5.5x5.5in, Height: 5,5cm / 2.2in, Capacity: 770ml / 26oz

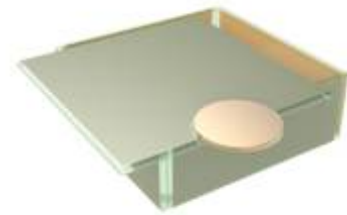
The Bento Appetizer or Dessert Plate can be used to serve small salads, risotto, starters, desserts, soups (seasonal vegetable minestrone), sides (a portion of french fries) and other appetizers such as arancini or spring rolls in a plate that will protect the meal, without compromising on the eating experience! Actually it enhances it! As a welcome amenity, surprise your guests with a delicious food amenity, guarded inside the cover (can also use shrink wrap under the cover). It is also the perfect size for kids' meals such as pasta or fish fingers.



S5-S6-01-SS4220370



S5-S6-01-SS3843



S5-S6-01-SS02910450



S5-S6-01-RHZ422021



S5-S6-01-DMZ026021



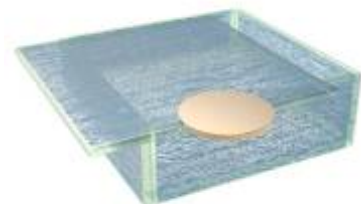
S5-S6-01-RHZ43021



S5-S6-01-CR422



S5-S6-01-X40



S5-S6-01-CR123



S5-S6-01-SR422



S5-S6-01-SR21

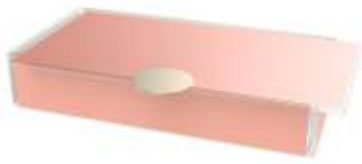
# er Plate Collection

## e Pair

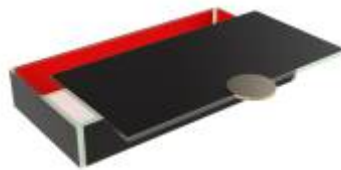
### Large Rectangular Plate

28x14cm / 11x5.5in, Height: 6cm / 2.4in, Capacity: 1.750ml / 59.2oz

The size and depth of the plate is perfect to serve main dishes such as prime steak, fish fillet, Ceasars salad, chicken roast, club sandwich, kebab, fish 'n' chips or an open faced burger. The large rectangular dinner plate is large enough to fit side greens, chips or potatoes as well. Easy to cut steak, it will protect the meal and keep it warm from kitchen to table.



S5-S6-02-SS4220370



S5-S6-02-SS3843



S5-S6-02-SS02910450



S5-S6-02-RHZ422021



S5-S6-02-DMZ026021



S5-S6-02-RHZ43021



S5-S6-02-CR422



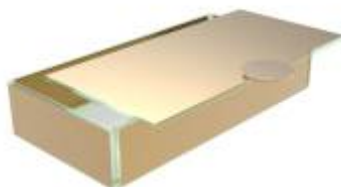
S5-S6-02-X40



S5-S6-02-CR123



S5-S6-02-SR422



S5-S6-02-SR21

# The *Bento* Dinner Plate Collection

## Large Pair

Long Rectangle Appetizer Plate / Cutlery Case / Dip Bowl Set / Canape Tray  
28x7cm / 11x2.8in, Height: 4cm / 1.6in, Capacity: 480ml / 16.2oz

This versatile appetizer plate is great for small food bites and long appetizers such as an octopus dish, spring rolls or side greens and can be stacked on top of the large rectangular bento main course plate. This plate is also useful as a cutlery case and a dipping bowl tray.

As a cutlery case, it is a unique decorative object for the table setting, but at the same time it provides the perception of "cleanliness and sanitation" as well as the sense of a "personal" rather than a communal cutlery set. Operationally, restaurants reduce costs since cutlery case presets can be ready in the service station and tables can be turned faster. Finally, it is great as a passing or canape tray for canapes in Cocktail parties and Receptions.

Code: SC-17-16



SC-17-16-SS4220370



SC-17-16-SS3843



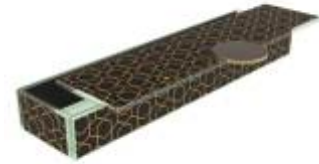
SC-17-16-SS02910450



SC-17-16-RHZ422021



SC-17-16-DMZ026021



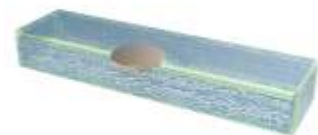
SC-17-16-RHZ43021



SC-17-16-CR422



SC-17-16-X40



SC-17-16-CR123



SC-17-16-SR422



SC-17-16-SR21



# Ice Tray

ase

ints can  
at



Code: SC-17-16-SR21



MyGlassStudio  
Defeat Covid-19

# *The Super Hero of*

The Long Rect

## Appetizer Plate



Code: SC-17-16-SS3843

## Dip Bowl Set



Code: SC-17-16-RHZ43021, Assorted with square dipping bowls and individual condiment spoons

# *of the Collection*

tangle with its Multiple Uses & Various Accessories

## Cutlery Case



Code: SC-17-16-SS3843, Assorted with Napkin ring and cutlery rests

## Canape Tray



Code: SC-17-16-DMZ026021, Assorted with wine glass holder

# Tabletop

Napkin R



# Accessories

ing | Cutlery / Chopstick Rests | Dip Bowl Set | Salt & Pepper Holder

Cutlery case is the long rectangle bento dinner plate in which a variety of accessories can be added. You can transform it into a condiment tray/dip bowl set or a cutlery case.

To create the dip bowl set, place 4 mini square dipping bowls with their individual condiment spoons.

To create a cutlery case, place the salt & pepper holder at one end together with the cutlery rests. Use the napkin ring to envelope the silverware set, the napkin and the salt spoon. The guest can then place a fork and the knife on the table resting on the cutlery rests.



Color: SR21



Color: RHZ43021



# Tabletop Accessories

## Napkin Ring and Cutlery / Chopstick Rests

### Napkin Ring

6x2,5cm / 2,4x1in, Height: 3.1cm / 1.2in

A napkin ring with 2 round handmade glass beads and metal ring. Envelope napkin, cutlery set or chopsticks as well as the salt tasting spoon and offer them together inside the cutlery case.  
Code: SC-00-10



SC-00-10-X40-BK  
Black



SC-00-10-X40-W  
White



SC-00-10-X40-G  
Gold

### Cutlery / Chopstick Rests

6x2,6cm / 2,4x1in, Height: 1 cm/0.4in

A chopstick or cutlery rest for fine dining table setting. It can be placed inside the cutlery case along with the napkin ring, cutlery set and napkin. Guests can place them on the table on their own together with flatware.

Code: SC-17-13



SC-17-13-SR43  
Black



SC-17-13-SR026  
Brown



SC-17-13-SR0450  
Gray



SC-17-13-SR422  
Pure White



SC-17-13-X40  
Transparent



SC-17-13-SR21  
Precious Gold

Color: DMZ026021

# Tabletop Accessories

## Condiment Bowls with Condiment Spoons

### Condiment / Dipping Bowls

6x6cm / 2,4x2,4in, Height: 2cm/0.8in, Capacity: 30ml/1 oz

You can place 4 mini square (or round) condiment bowls along with their individual condiment spoons inside the long rectangle bento dinner plate; transforming it into a dipping bowl set.

Code: B5-S4-04



B5-S4-04-SR43



B5-S4-04-SR026



B5-S4-04-SR0450



B5-S4-04-SR422



B5-S4-04-X40



B5-S4-04-SR21



SC-01-13-BL  
Black



SC-01-13-BG  
Old Bronze



SC-01-13-GS  
Gold



SC-01-13-CP  
Copper



SC-01-13-SS  
Silver

### Salt & Pepper Holder with Salt Spoon

6x3cm / 2,3x1.2in, Height: 1.8cm / 0.7in, Capacity: 10ml / 0.3oz

The salt & pepper holder comes with a salt spoon and can be placed inside the long rectangle bento dinner plate. You might also want to add a napkin ring and a pair of cutlery rests, thus creating a proper personal cutlery case.

Code: SC-04-07



SC-04-07-SR422-SS



SC-04-07-SR43-BL



SC-04-07-SR026-BG



SC-04-07-SR21-GS



SC-04-07-X40-SS







# Tabletop Accessories

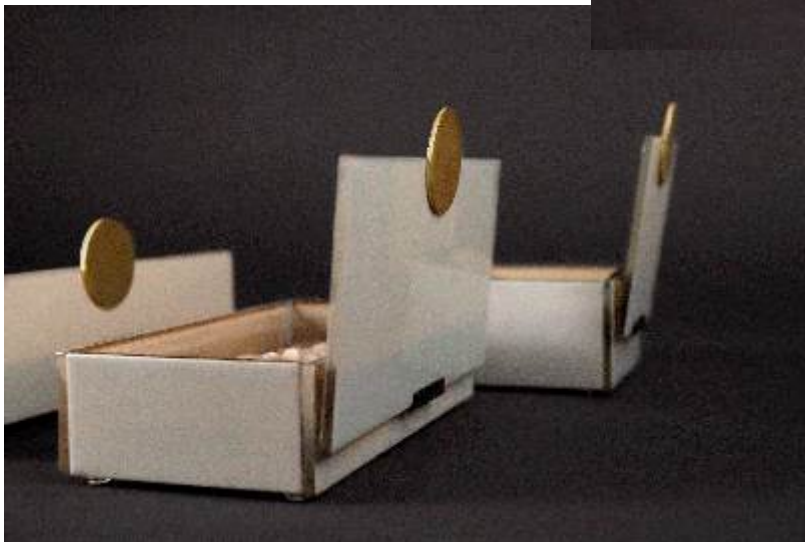
## Bento Dinner Plates Cover Holders

Dimensions: 4.5x1.6cm/1.8x0.6inch, Weight: 21gr/0.05lbs

Use the cover holder to safely place and hold the lid of the bento dinner plates for a lux and safe presentation. It comes in a set of 6pcs. Code: SC-18-13



SC-18-13-BK





# Tabletop Accessories

## Bento Plate Dividers

### Large Divider

Dimensions: 27x13x4cm/11x5x1.6inch, Weight: 340gr/0.7lbs

Bento box divider for the large rectangular bento dinner plate (S5-S6-02) to divide the plate in 6 parts. Turn the large rectangular bento dinner plate into a Japanese bento box using the inox metal divider. It can also be used for spa or room amenities for chocolates or petit fours and at the bar for canapes and finger food. Code: RP-90-46



RP-90-46-BK



RP-90-46-W



RP-90-46-G

### Small Divider

Dimensions: 12.5x6.5x4cm/5x2.3x1.6inch, Weight: 120gr/0.3lbs

Bento box small divider for the large rectangular bento dinner plate (S5-S6-02), to divide the plate in 3 parts, a larger area and two small areas. Can also be used with the large square bento plate (S5-S6-01), to either divide the plate in 3 parts or in 4 parts by using 2 dividers back-to-back. Code: RP-90-48



RP-90-48-BK



RP-90-48-W



RP-90-48-G



Code: RP-90-48-BK



*Tabletop Accessories*

Tabletop Caddy - Bread Basket & Cutlery Case



# Large Tabletop Caddy, Cutlery Case for 2 or 4 sets / Bread Basket

Dimensions: 28x14cm/11x5.5, height: 20cm/8inch, Capacity: 1750ml/59oz

Use the Large Rectangular with the cover (S5-S6-02) and the metal handle of the Large Basket (RP-90-44) to present a unique tabletop caddy. Caddy can accommodate a bread basket, 2 or 4 cutlery cases, sanitizing materials if needed. Can be in 1, 2 or 3 levels.



SC-18-12-SS4220370-W



SC-18-12-SS3843-BK



SC-18-12-SS02910450-PE



SC-18-12-RHZ422021-G



SC-18-12-DMZ026021-G



SC-18-12-RHZ43021-BK



SC-18-12-CR422-W



SC-18-12-X40-PE



SC-18-12-CR123-PE



SC-18-12-SR422-W



SC-18-12-SR21-G

[www.myglasstudio.com](http://www.myglasstudio.com)

Code: S5-S6-02-DMZ43021  
Large Rectangular Bento Dinner Plate used as a cutlery case for multiple cutlery sets., without the handle



*Bento Dinner Plates A Solution for Every Outlet*

A Gift Box. From C

Code: SC-17-16-X40, Long Rectangle Bento Dinner Plate  
Code: SC-07-11-W Wine Glass Holder, White

www.myglass





Chef... to Guest.

# 5 Dinner Plates - So

Reduce c

**The Bento Dinner Plate**  
Bento dinner plates used individually with their cover

**Tiered Display**  
Multiple bento dinner plates used in tiers

**Bento Basket**  
3 sizes of bento dinner plates together with their covers



## Hotel Outlets

Restaurants	yes		
Sit-Down Banquets	yes		
Coffee Breaks-Small Events			Y
Receptions	yes		
Boardroom Lunch Breaks	yes		
In Room Dining		yes	Y
Lobby / Tea Lounge		yes	Y
Bar Food	yes	yes	Y
Executive Club Lounge			

# Solution for Every Outlet

Costs by using same item for multiple outlets

Items used with bento

**The Service Tray**  
A tray to accommodate any combination of bento plates

**Luxury Lunchbox**  
Bento plates stacked one on top of another with preset meals

**Bento Server**  
A small display for bento dinner plates



	yes		
	yes		
yes		yes	yes
	yes (used as serving tray)		
	yes	yes	
yes	yes		
yes			
yes			
		yes	yes

*Tier Display*



# Tier Display - Stacking Options

- Bento dinner plates “lock” one on top of the other. Top tier will not slide off with normal service handling.
- Covering the tiered display is possible with both the individual covers or with the large cover of the pair.
- Bento dinner plates can be tiered between pairs.

## Small Pair



### 2 Tiers

2 Rectangular  
1 Rectangular cover



### 3 Tiers

3 Rectangular  
1 Rectangular cover



### 2 Tiers

1 Rectangular  
2 Square  
2 Square covers

### 2 Tiers

1 Rectangular  
2 Square  
1 Rectangular cover

### 3 Tiers

2 Rectangular  
2 Square  
2 Square covers

### 3 Tiers

2 Rectangular  
2 Square  
1 Rectangular cover

## Large Pair



### 2 Tiers

2 Rectangular  
1 Rectangular cover



### 2 Tiers

1 Rectangular  
2 Square  
1 Rectangular cover



### 2 Tiers

1 Rectangular  
2 Square  
2 Square covers

# Tier Display for a *Covered Breakfast Service*

Tiered display is great for serving breakfast. Hot food will be tiered in top levels and cold food in a basket or on the serving tray. Served with a cutlery case and/or a condiment service as for bar finger food.

Gray - Healthy



Pure White - Continental



and cold in the bottom levels. You can display a breakfast menu with a bento  
tray and all dishes will be covered. Best use would be for In-Room Dining as well

Light Blue - Middle Eastern



Transparent - Nordic



## *Bento Baskets. A Joy To Use!*

A memorable experience for the guest! A reason to come back.  
An environmentally sustainable solution and an asset for long.  
A solution for in-room dining, coffee breaks, bar food and more.





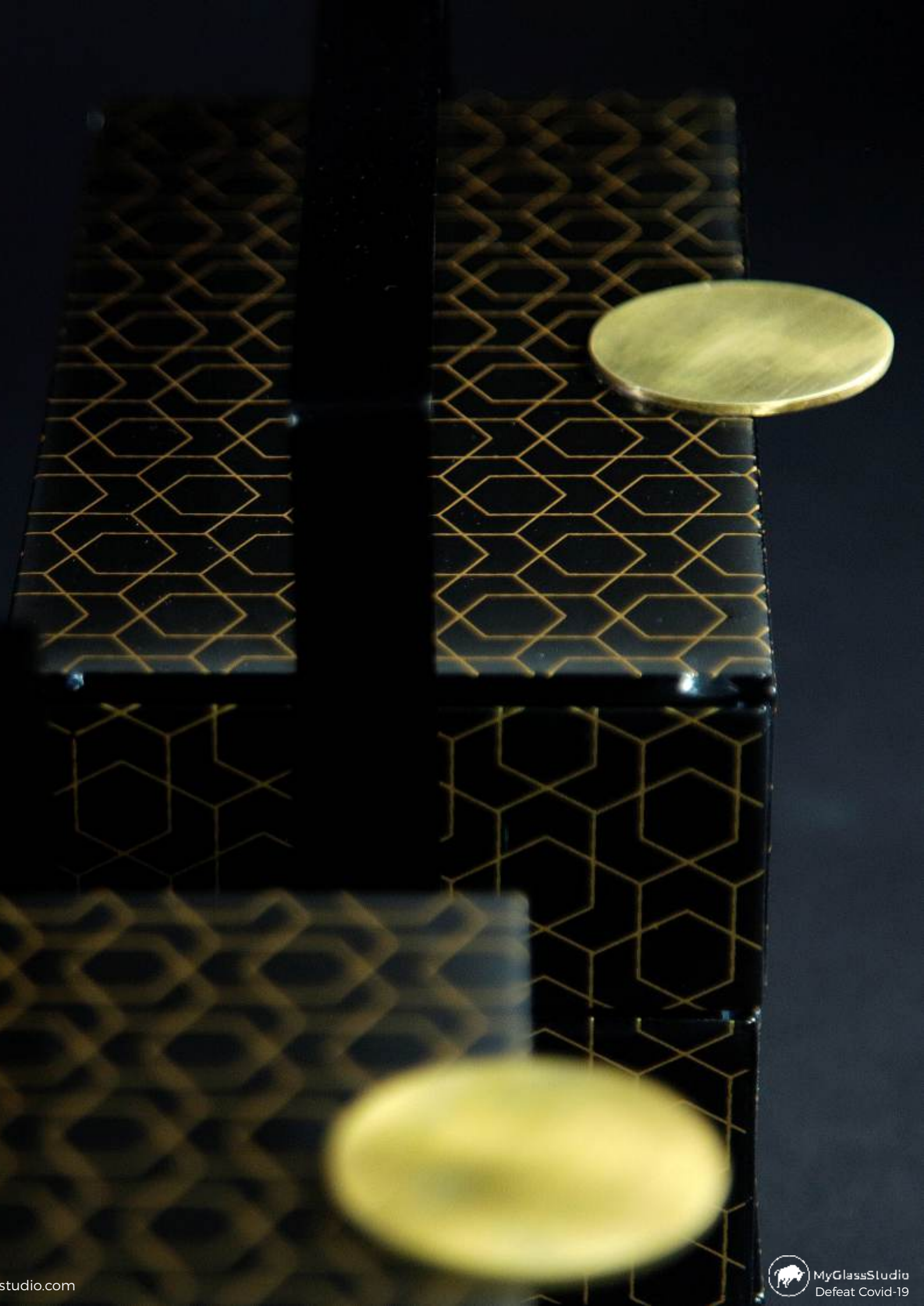
k.  
term.  
e...



## *Bento Baskets. Efficient Meal Delivery*

“Picnic” type of Bento dinner plate baskets have exceptional advantages in **Safe and Efficient meal delivery**, whether you need to deliver a meal to a guest room, a villa, in small events and coffee breaks, buffet, lobby lounge or function room.

- They all **fit in a hot box** to keep food warm, transported safely with a buggy, a room service trolley, a serving tray or by holding it from the handle.
- There are possibilities to prepare a variety of menus by using the basket in **different dinner plate configurations**. Can be used in 1, 2 or 3 tiers.
- It is a complete solution since it can incorporate cutlery case, condiment tray and table setting elements.
- They are **light-weight** and easy to be carried by guests, who do not wish room service trolleys to enter their room.
- It allows for cold food (salads, desserts etc) to stay at the bottom tiers of the basket, while hot meals to be placed at the top tiers of the basket.
- Use the basket to serve a complete course in tiers. Mix and match different bento plate colors.
- Metal coating is specified for use outdoors, under harsh weather conditions and withstands salt atmospheric corrosion. Metal baskets come in a variety of colors matching the color of the bento plates.



# *Bento Dinner Plate Baskets*

Large Bento Basket



# Large Bento Basket, 28x14cm / 11x5,5in, Height: 20cm / 8in, Capacity: 4.250ml / 144oz, Weight: 4.4kg / 9.7lbs

The large bento basket is comprised of one large rectangular bento dinner plate, 2 large square plates, 2 long rectangle plates and 2 long rectangular covers. This "picnic" basket is great for food delivery in In-room dining as well as for delivery with buggies in resort villas and fits in hot boxes. Basket holds the large dinner plate where you can have the main course such as steak. In the large square plates you can have the appetizer, salad or dessert or the side dishes of the main course, such as chips and or you can use it as a bread basket. The long rectangle plates can be used: the first as a condiment tray (by adding the square condiment bowls) and the second as the cutlery case (optionally, along with napkin holder, salt and pepper holder and cutlery rest). In this way you have a complete meal delivered to the room. The basket can be placed outside the room on a folding butler tray and work as a "knock and drop" delivery.

Code: SC-18-08



SC-18-08-SS4220370-W



SC-18-08-SS3843-BK



SC-18-08-SS02910450-PE



SC-18-08-RHZ422021-G



SC-18-08-DMZ026021-G



SC-18-08-RHZ43021-BK



SC-18-08-CR422-W



SC-18-08-X40-PE



SC-18-08-CR123-PE



SC-18-08-SR422-W



SC-18-08-SR21-G

# *Bento Dinner Plate Baskets*

Medium Bento Basket



# Medium Bento Basket, 22x11cm / 8,6x4,3in, Height: 20,5cm / 8in, Capacity: 2.835ml / 96oz, Weight: 2,8kg / 6.2lbs

The medium bento basket is made up of 3 tiered small rectangular bento dinner plates and 1 small rectangular cover. A excellent solution for bar food and function rooms, in-room dining, small events and coffee breaks. You can serve main courses (for example pasta), desserts, finger food, appetizers and desserts. Along with the small rectangular dinner plate, you can also tier 2 small square dinner plates if you want to serve small side dishes or a soup.

Code: SC-18-10



SC-18-10-SS4220370-W



SC-18-10-SS3843-BK



SC-18-10-SS02910450-PE



SC-18-10-RHZ422021-C



SC-18-10-DMZ026021-G



SC-18-10-RHZ43021-BK



SC-18-10-CR422-W



SC-18-10-X40-PE



SC-18-10-CR123-PE



SC-18-10-SR422-W



SC-18-10-SR21-G

Color: DMZ026021

*Bento Dinner Plate Baskets*  
Small Square Basket





## Small Square Basket, 14x14cm / 5,5x5,5in, Height: 20cm / 8in Capacity: 2.310ml / 78oz, Weight: 2,3kg / 5.1lbs

The small square bento basket consists of 3 large square bento dinner plates and 1 large square cover. It is the perfect way to serve light, in-room dining lunches or appetizers, as a room amenity "bowl" for cheese, sliced fruit and pastry amenities. It can also be used as a covered high tea stand for the tea lounge, for bar food and finger food in the bar, for appetizers in the restaurant, as well as for small events and meetings as a lunch bag. Code: SC-18-07



SC-18-07-SS4220370-W



SC-18-07-SS3843-BK



SC-18-07-SS02910450-PE



SC-18-07-RHZ422021-C



SC-18-07-DMZ026021-G



SC-18-07-RHZ43021-BK



SC-18-07-CR422-W



SC-18-07-X40-PE



SC-18-07-CR123-PE



SC-18-07-SR422-W



SC-18-07-SR21-G

*Bento Plate* **Baskets**  
Tiny Square Basket



# Tiny Square Basket, 11x11cm / 4,3x4,3in, Height: 16cm / 6,3in Capacity: 1.230ml / 41,6oz, Weight: 1,4kg / 3lbs

The tiny square bento basket consists of 3 small square bento dinner plates each one having height 4cm/1.6inch (interior 3,5cm/1.4inch) and 1 small square cover. It is the perfect petit four stand or a unique turndown service basket. Can also be used for bar food and appetizers in the restaurant.  
Code: SC-18-14



SC-18-14-SS4220370-W



SC-18-14-SS3843-BK



SC-18-14-SS02910450-PE



SC-18-14-RHZ422021-G



SC-18-14-DMZ026021-G



SC-18-14-RHZ43021-BK



SC-18-14-CR422-W



SC-18-14-X40-PE



SC-18-14-CR123-PE



SC-18-14-SR422-W



SC-18-14-SR21-G

Code: SC-18-14-RHZ43021-BK

## *A Service Tray with Absolut*

It Will Accommodate any Combination of Bento Dinner



# olute Versatility

er Plates

- A Charger Plate or Place Mat for Banquets
- A Room Service Amenity Tray for IRD
- A Canape Serving Tray for Receptions

Small rectangular together with a cutlery case, napkin ring and cutlery rests. Color: RHZ43021.



# Bento Dinner Plate

The Service Tray

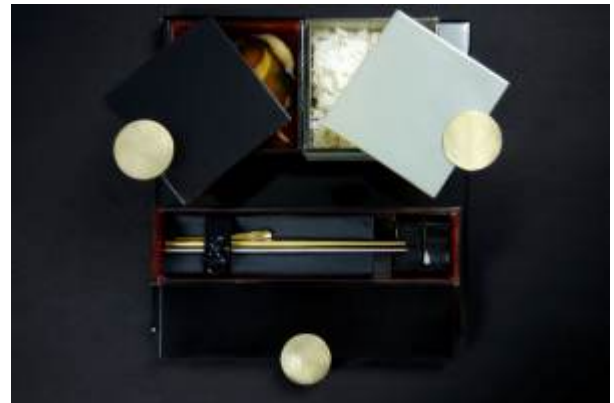
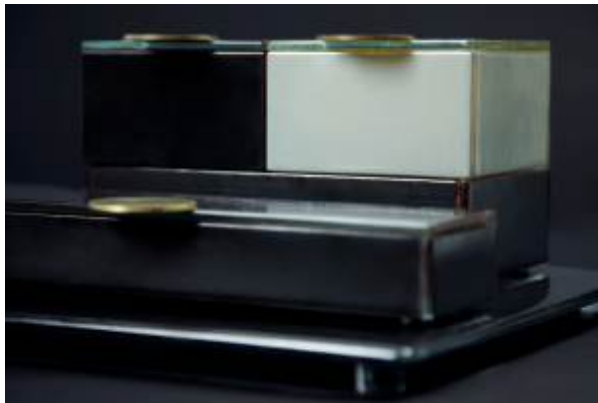
## Service Tray / Placemat / Charger Plate

30x30cm / 12x12in, Height: 2cm / 0.8in, Weight: 1.8kg / 4lbs

Code: S1-F3-41

A tray for use in restaurants or banquets on which the dishes can be served one by one on a single tray or charger, thus replacing the placemat. It will be presented with a cutlery case as well as with a dipping bowl set.

The tray grants versatility in the bento dinner plate layout, allowing the use of dinner plates from both the small and the large pair to be combined.



Small rectangular dinner plate together with 2 small square plates and a cutlery case with napkin ring and cutlery rests. Small black square plate serving miso soup and in the gray a portion of rice

Colors: SS3843 (black with inner red) and SS02910450 (gray with inner old gold).



S1-F3-41-RHZ422021



S1-F3-41-RHZ43021



S1-F3-41-DMZ026021



S1-F3-41-SR43



S1-F3-41-CR422



S1-F3-41-CR123



S1-F3-41-SR21



S1-F3-41-X40

# Service Tray

will Accommodate any Combination of Bento Dinner Plates



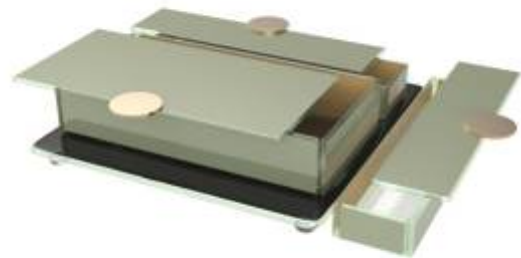
One small rectangular together with 2 small square plates and 2 long rectangular plates  
Color: RHZ43021 - Art deco black



One small square together with 2 long rectangular plates  
Color: DMZ026021 - Art deco tobacco brown



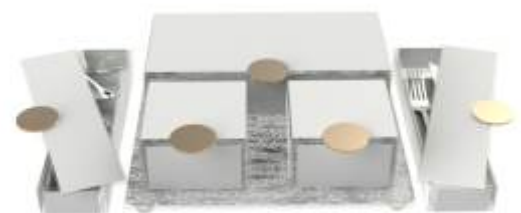
One large rectangular together with 2 large square plates and 1 long rectangular plate  
Color: RHZ422021 - Art deco white



One large rectangular together with 2 long rectangular plates  
Color: SS02910450 - Gray



One large rectangular together with 2 large square plates.  
Color: RHZ422021 - Art deco white



Two small square plates together with 2 long rectangular and one large rectangular plate.  
Color: SR422 - Pure white

# *A Service Tray for In-Room Dining &*

## Room Service Amenity Tray

Room service tray to place the multiple bento dinner plates with or without beverages as an amenity tray in the room. It grants more versatility in the bento dinner plate layout, allowing the use of dinner plates from both the small and the large pair to be combined.



Small rectangular together with 2 large square dinner plates and a long rectangle bento dinner plate. Color: RHZ42201.



Black tray together with a large basket. Color: SS02910450



# Receptions

## Anti-Slippery Canape Serving Tray

The serving tray can also be used as a canape serving tray when paired together with pre-set canape plates. Guests can remove covers and place them on the tray. Canape plates have anti-slippery food grade silicone bumpers that will not allow the canape pre-sets to slide off. Same is true for the covers.



# *Bar, Drinks & Bar Snacks*



Espresso Martini with black and gold long rectangular covered snack tray (SC-17-16-RHZ43021) and black and gold serving tray (S1-F3-41-RHZ43021).

# Covered Dinner Plate *Bar Snacks*

## Long Rectangular Bento Dinner Plate

28x7cm / 11x2.8in, Height: 4cm / 1.6in, Capacity: 480ml / 16oz

The long rectangular bento dinner plate as well as the small square can be used for both snacks, dips and chips at the bar to accompany drinks and cocktails.

Popcorn and chips can be served in the small square. Condiments, marinated olives, pistachios and peanuts can be served in the condiment bowls inside the long rectangular plate.

Can also be presented together with the serving tray as due to the anti-slippery surface the bento plates will not slide off the tray.



Negroni with gold long rectangular covered snack tray (SC-17-16-SR21), gold condiment square bowls (B5-S4-04-SR21) and black serving tray (S1-F3-41-SR43).



Whiskey with brown long rectangular covered snack tray (SC-17-16-DMZ026021), brown condiment square bowls (B5-S4-04-SR026) and brown serving tray (S1-F3-41-DMZ026021).



Mohito with grey long rectangular covered condiment server (SC-17-16-Ss02910450), black condiment square bowls (B5-S4-04-SR43), square nacho bowl (S5-S6-03-SS02910450) and black serving tray (S1-F3-41-SR43).



Cosmopolitan with pink long rectangular covered snack tray (SC-17-16-SS4220370), white condiment square bowls (B5-S4-04-SR422) and white and gold serving tray (S1-F3-41-RHZ422021).



Mimosa with white and gold long rectangular covered snack tray (SC-17-16-RHZ422021), a gold condiment square bowl (B5-S4-04-SR21) and white and gold serving tray (S1-F3-41-RHZ422021).



Aperol Spritz with white and gold long rectangular covered snack tray (SC-17-16-RHZ422021), black condiment square bowls (B5-S4-04-SR43) and white and gold serving tray (S1-F3-41-RHZ422021).

*Covered Cocktail Plates for Receptions & Cocktails*



# l Parties

## 3 Items to Make Receptions Feel Safe Again

- \* Covered cocktail plates with canape presets
- \* Adjustable wine glass holder
- \* Serving tray for canape plates

## 2 Unique Advantages

- \* Safe way to start with receptions
- \* Optimized canape storage in the back of the house (fridge and warmer)

Code: SC-17-16-DMZ026021, Long Rectangle Bento Dinner Plate  
Code: SC-07-11-BK Wine Glass Holder, Black

# The Safe Way to Re-Start Parties

## Long Rectangular Bento Dinner Plates with Canape Serving Tray

Plate: 28x7cm / 11x2.8in, Height: 4cm / 1.6in, Capacity: 480ml / 16oz

Tray: 30x30cm / 12x12in, Height: 2cm / 0.8in

Receptions and cocktail parties are hard to envision during the pandemic. Nevertheless, with the covered bento cocktail plate, safety comes first. Presets of canapes are served covered.

Canape presets however, have one more operational advantage: **Handling**. Canapes placed in covered plates can be stored in higher volumes (10 times more) in both the refrigerator, the warmer as well as on a tray.

The weight of the tray together with 4 preset canape plates is 4,8kg / 10,6lbs.



Long Rectangular Plate, SC-17-16-X40



Long Rectangular Plate, SC-17-16-DMZ026021



Long Rectangular Plate, SC-17-16-SS02910450



Long Rectangular Plate, SC-17-16-DMZ026021

## Wine Glass Holder



SC-07-11-BK  
Black



SC-07-11-G  
Gold



SC-07-11-W  
White



4 Long Rectangular Plates, SC-17-16-DMZ026021  
Serving Tray, S1-F3-41-DMZ026021



*Stackable & Covered Luxury Lunchboxes*





## Preset Meals Presented as a Memorable Experience

### When Space in Boardroom Buffet Counter is not Enough... Compact Presentation with Stackable Lunchboxes

#### Front Of The House

Stack covered bento dinner plates for guests to serve themselves with a lunchbox. Great for boardroom lunches, lunch breaks, small catering events and coffee breaks.

Compared to the open plates, the lunchbox concept **saves space on the counter** because there is no need to align them on a counter but you can actually stack them one on top of the other.

Due to the food grade silicone bumpers lunchboxes do not slide when they are stacked.

#### Back Of The House

In the back of the house, you can prepare the meals plated to the last detail and stack them with their covers (with or without cling film) in the refrigerator or the warmer, ready to be served at a later time.



Code SC-17-16-DMZ026021, Long Rectangular Bento Dinner Plate



# *Buffet Bento Dinner Plate Server*

9, 6 & 3 Part Bento Dinner Plate Server

A Covered Solution for Executive Club Lounges & Coffee Breaks

- Tier servers one on top of another
- Place them back to back
- Refill from the back - Retrieve from the front
- Metal frame withstands salt atmospheric corrosion



Code F2-16-08-CR43-BK, 3-Part Bento Server, Black

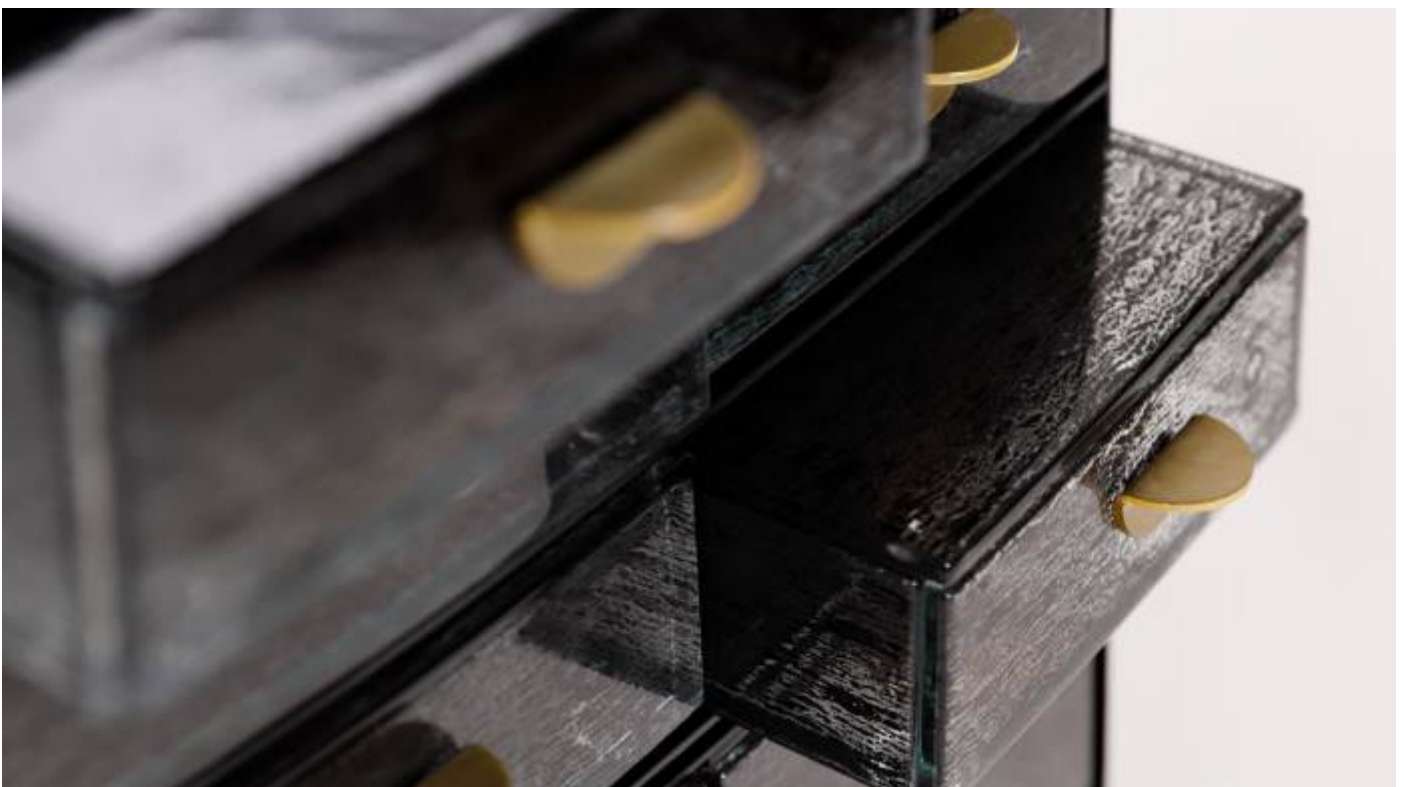
# Buffet Bento Dinne

9-P

## 9-Part Bento Server for Executive Lounges

Dimensions: 43.5x14cm / 17.1x5.5inch, Height: 19.5cm / 7.7inch, Weight: 11.6kg / 25.5lbs, Code: F2-

Buffet bento server with 9 bento lunch box drawers with handles and covers for individual portions for the post-covid world. Two or more bento servers can be stacked one on top of the other. Bento server can be refilled from the back (both sides are open) and guests can retrieve from the front. Bento servers can be placed back to back and guests can retrieve from both sides. A solution for executive lounges, coffee breaks and small events.



Code F2-16-09-CR422-W, 9-Part Bento Server, White  
Code F2-16-09-CR43-BK, 9-Part Bento Server, Black

# Smart Bento Dinner Plate Server

Smart Bento Dinner Plate Server

F2-16-09



F2-16-09-CR43-BK



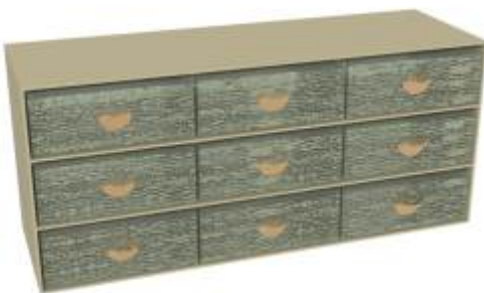
F2-16-09-CR026-BK



F2-16-09-X40-PE



F2-16-09-CR422-W



F2-16-09-CR0450-PE



F2-16-09-CR021-W

# Buffet Bento Dinne

6-P

## 6-Part Bento Server for Executive Lounges

Dimensions: 28.6x14cm / 11.3x5.5inch, Height: 19.5cm / 7.7inch, Weight: 7.9kg / 17.4lbs, Code: F2

Buffet bento server with 6 bento lunch box drawers with handles and covers for individual portions. Two or more bento servers can be stacked one on top of the other. Bento server can be refilled from the back (both sides are open) and guests can retrieve from the front. Bento servers can be placed back to back and guests can retrieve from both sides. A solution for room amenities, executive lounges, coffee breaks and small events.



Code F2-16-10-CR422-W, 9-Part Bento Server, White

Code F2-16-10-CR43-BK, 9-Part Bento Server, Black

# Smart Bento Dinner Plate Server

Smart Bento Dinner Plate Server

F2-16-10



F2-16-10-CR43-BK



F2-16-10-CR026-BK



F2-16-10-X40-PE



F2-16-10-CR422-W



F2-16-10-CR0450-PE



F2-16-10-CR021-W

# Buffet Bento Dinner

3-P

3-Part Bento Server for Executive Lounges or Afternoon Tea

Dimensions: 14.3x14cm / 5.6x5.5inch, Height: 19.5cm / 7.7inch, Weight: 4.5kg / 10lbs, Code: F2-16-

The 3-part bento server can be used as an afternoon tea bento box for lounges or even for VIP amenities in hotel to place petit fours, chocolates and fruits. The 3 part high tea box comes with a handle to carry and 3 bento lunch box drawers with handles and covers for individual portions.



Code F2-16-08-CR422-W, 3-Part Bento Server, white



# r Plate Server

## art Bento Dinner Plate Server

-08



F2-16-08-CR43-BK



F2-16-08-CR026-BK



F2-16-08-X40-PE



F2-16-08-CR422-W



F2-16-08-CR0450-PE



F2-16-08-CR021-W

# Buffet *Bento Dinner Plate Server*

## Food Labels

Buffet Food Labels for Bento Server  
Dimensions: 4,5x2,5cm/1.8x0.8inch  
Weight: 58gr each/0.1lbs,  
Code: F2-01-00-G

Coffee break buffet food labels for the 3-, 6- and 9-part bento server. Keep milk, coffee, decaf, tea and sugar in individual portions inside the bento server drawers. They come in a set of 6 (total of 30pcs).

In case special inscriptions are needed, it can also be used with personalized self-adhesive printed food labels (size 4,5x2,5cm) with printed gold background (hex: #AF8941).



Code F2-16-10-CR422-W, 9-Part Bento Server, White



# The Testimonials

## What do our clients think



*“Glass Studio's ideas are amongst the most original that I have ever commissioned. They **blend inspiration with craftsmanship** in the most unique way...”*

Kristoffer Luczak,  
Past: VP F&B, COD, Macau  
Executive VP F&B, Wynn Macau, Wynn Palace



*«Every time I've done custom work with Glass Studio, the guests have been blown away. I love the **quality of their work** and their design flexibility!”*

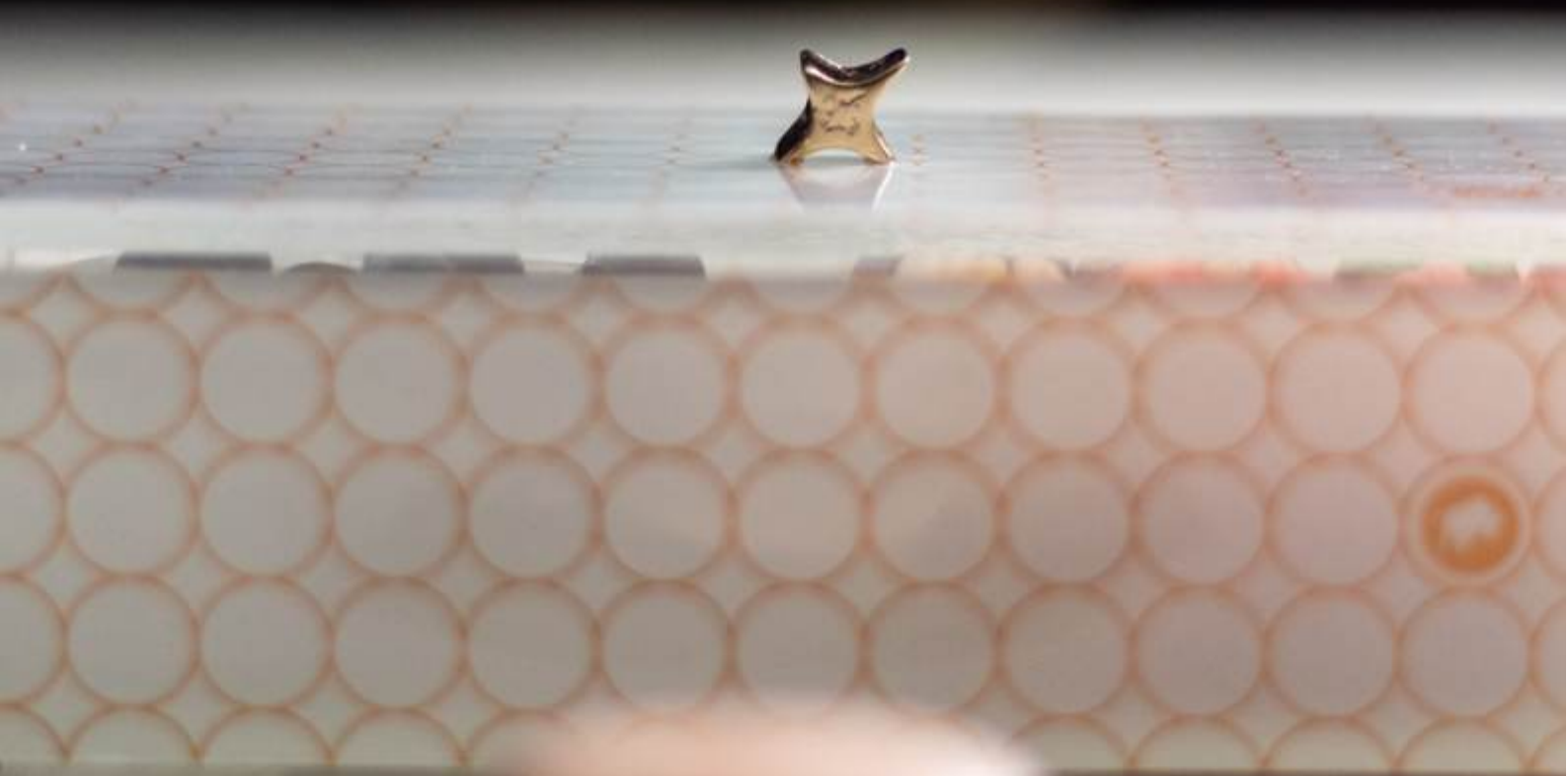
Sebastien Silvestri  
Past: SVP of F&B, SBE Las Vegas  
CEO The Dinex Group - Daniel Boulud



*“MyGlassStudio offers creativity and a real flair for design. We have worked with them for many years and they **never fail to deliver a fantastic product.**”*

Mark Askew,  
Past: Gordon Ramsay's Group Executive Chef  
Director at The Ivy Collection

*Defeat Covid-19*



**AMERICAS** **New York** The Plaza, Mandarin Oriental, Ritz Carlton Battery Park, Ritz Carlton Central Park, St. Regis, Aureole, Room at Rockefeller Plaza, Pier a Harbor House. **Las Vegas** The Venetian, Wynn Resort, Bellagio Resort, Mandalay Bay, MGM Palazzo, Mandarin Oriental, Vdara Las Vegas, Aria Resort & Casino, The Cosmopolitan of Las Vegas, Westgate Las Vegas Resort Bay **Los Angeles** Regent Beverly Wilshire, Spago Beverly Hills, CUT, Montage Resort & Spa, Hyatt Huntington Beach, Four Seasons Newport Beach, Hyatt Newport Beach, Intercontinental Los Angeles Downtown, Jw Marriott, Loews Hollywood Hotel **Miami** Ritz Carlton South Beach, Ritz Carlton Palm Beach, Breakers Hotel, Setai South Beach, Hard Rock Hotel & Casino Hollywood, Hard Rock **Orlando** Grande Lakes, Hyatt Regency Grand Cypress, Four Seasons Orlando at Walt Disney World Resort **Scottsdale** Four Seasons **Chicago** Radisson Blu Aqua, Swissotel, Park Hyatt, Trump International Hotel & Tower Chicago, **Dallas** Charlie Palmer restaurant, Joule **Houston** The Post Oak Hotel At Uptown Houston **Washington** Four Seasons, The Ritz Carlton (Maestro), St Regis, The Ritz-Carlton **Rim Hotel Shangri-La Toronto** **Vancouver** The Westin Bayshore

**MIDDLE EAST & AFRICA** **Riyadh** Al Faisaliah, Four Seasons, Intercontinental, Marriott, Moevenpick, Kempinski Burj Raffles **Makkah** Raffles Clock Tower, Swiss Clock Tower, Conrad, Marriott, Hyatt Regency, Fairmont, Hilton Convention Center **Jeddah** Ritz Carlton, Rocco Forte Assila, Park Hyatt, Centro Rotana **Kuwait** Jumeirah Messilah, Symphony style hotel, Regency Park Diplomatic Club, Shangri La Doha, Rotana City Center, The Torch, Hilton, Intercontinental The City, St. Regis Doha, Crown Plaza restaurant, Anantara, Marsa Malaz Hotel Kempinski, Debs W Remman, Sheraton Grand Resort & Convention Hotel, Mandarin Oriental, Moevenpick, Sofitel Zallaq. **Dubai** Burj Al Arab, Emirates Towers, Park Hyatt, Ritz Carlton DIFC, Madinat Jumeirah, Hyatt Regency, Atlantis the Palm, The H-Hotel, Sofitel Dubai, The Address Dubai Mall and Address Down Town Hotel, JW Marriott Marquis, Sofitel The Palm Resort & Spa, Sofitel Burj Khalifa, Dubai Marriott Hotel Al Jaddaf, Waldorf Astoria Palm Jumeirah, Four Seasons Palace, Shangri-la, Aloft Abu Dhabi, Fairmont Bab Al Bahr, Anantara Qars Al Arab, Crown Plaza Yas Island, St. Regis Saadiah, Capital Gate, Courtyard World Trade Center, Southern Sun, St. Regis Nation Towers, **Muscat** The Chedi, Grand Hyatt, Intercontinental

**ASIA-AUSTRALIA** **Singapore** Six Senses Duxton, Sofitel City Centre, Beauford Hotel, Fullerton Hotel, Grand Copthorne, Mandarin Oriental, Fairmont Singapore, The Ritz-Carlton, Capella Sentosa, Park Royal on Pickering, Marriott Singapore, Marina Bay Sands, Disneyland Hotel, Conrad, Intercontinental, Island Shangri-La, Mandarin Oriental, Marco Polo, Kowloon Shangri-la, Langham Place, Lisboa Hotel, St. Regis Cotai Strip, Studio City Morpheus, Wynn, Lisboa Hotel, The Venetian, Galaxy Starwood, MGM Grand, Ritz Carlton, JW Marriott Genting Resorts World Genting **Beijing** Four Seasons Beijing, Aman at Summer Palace Beijing, St. Regis, Capella Shanghai Jian Ye Li, Wanda Reign on the Bund, Grand Hyatt, Pudong Shangri-La, Hilton, Peninsula Shanghai, Baohua, The Langham Xintiandi **Tokyo** Grand Hyatt, Mandarin Oriental, Conrad, Four Seasons, The Prince Park Tower Hotel, Renaissance, Regency Tokyo, Ritz Carlton Tokyo, Shangri-la, The Peninsula Tokyo, Hilton Tokyo, Hilton Tokyo Odaiba, Hilton Tokyo Bay, The Ritz Carlton, Takarazuka Hotel, Myako, Ritz Carlton, Take restaurant, Hyatt Regency Kyoto, Suiran Luxury Collection Hotel Kyoto, Hotel Gracery, JW Marriott Seoul, Hilton Seoul, W Seoul, Conrad Seoul, Jeju Shinhwa World, Lotte Hotel Busan **Vietnam** Heritage Le Meridien, Tree Lang Co Hue, Angsana Lang Ho Hotel, MGM Grand Ho Tram, Lotte Hotel **Manila** New World Makati City, Hilton Resort, Philippine Plaza Hotel **Indonesia** W Retreat and Spa Bali Seminyak, Banyan Tree Ungasan Bali, St. Regis Bali, Four Seasons, Pullman Mandalay Mingalar **Thailand** Anantara Lawana Resorts And Spa, Bangkok The Oriental, The Landmark, St. Regis, Shangri-La's Rasa Ria Resort, Mandarin Oriental Kuala Lumpur **Cambodia** Nagaworld **Taipei** Mandarin Oriental **Mauritius** Raffles Resort & Spa **Seychelles** Four Seasons, Raffles **Maldives** Kandima Resort, The St. Regis, Maldives Vommuli, Conrad Rangali, Maldives, Kuredu Island Resort & Spa, Four Seasons Resort Maldives At Landaa Giraavaru **India** The Taj Mahal Palace and Towers, Westin Pune Koregaon Park, ITC Royal Gardenia Bangalore, Jaypee Vasant, Continental, Sheraton Bangalore, The Leela, MGM Grand Casino, Hilton, Sheraton On The Park **Melbourne** Crown, Sheraton, Melbourne Racing Club Brisbane W Hotel **New Zealand**

**EUROPE** **Paris** Plaza Athenee, The Ritz, Four Seasons George V, Park Hyatt Place Vendome, Hyatt Regency Paris-Madeleine, Dorchester, Carlton Tower, Claridge's, Le Gavroche, Pied a Terre, Gordon Ramsay, Four Seasons Canary Wharf & Four Seasons, Brown's Hotel, The Connaught at Maybourne, Quilon Restaurant & Bar, The Fairmont Savoy, Landmark London, Dukes hotel, Ai Services London, Ivy Collection Restaurants, Chotto Matte **Rome** Waldorf Astoria Cavalieri, Rocco Forte Hotel De Russie, Intercontinental Amstel, Waldorf Astoria, Hilton, W Hotel, MSC Cruises **Berlin** Kempinski Adlon, Grand Hyatt **Munich** Marriott Hotel Amigo **Barcelona** Hotel Arts Barcelona W Barcelona **Geneva** Beau-Rivage Palace, Four Seasons Des Bergues, Le Ritz **Marriott Prague** Hilton **Monaco** Societe des Bains de Mer **Cannes** The Grand Hotel Cannes **Dublin** Four Seasons, The Shelbourne, Ararat, Lotte Hotel, Four Seasons, The Ritz-Carlton, Baltschug Kempinski Hotel St. Petersburg, Hilton St. Petersburg, Concord Catering

**EUROPE - MIDDLE EAST**  
anna@myglasstudio.com  
Mob: +359878694588  
**EUROPE - MIDDLE EAST**  
nana@myglasstudio.com  
Mob: +306944653526

**AMERICAS**  
emanuela@myglasstudio.com  
Mob: +359897971676  
**JAPAN**  
kami-chan@myglasplate.jp  
Office: +81 9030380450

**AUSTRALASIA**  
riccardo@myglasstudio.com  
Mob: +35987751111  
**MIDDLE EAST**  
jenny@myglasstudio.com  
Mob: +3069461111

# Client List 2020

Nobu 57, The Modern, Gordon Ramsay, Grand Hyatt NY, Loews Regency Hotel, The New York Palace, The Quin NY, Rainbow Grand Hotel & Casino, Charlie Palmer Steak, Wolf Gang Puck, Caesars Palace, Cut, Trump International Hotel & Tower, II & Casino **San Francisco** Four Seasons, Ritz Carlton, St. Regis, Gary Danko, Park Hyatt, Grand Hyatt, Ritz Carlton Half Moon Seasons at Beverly Hills, The Beverly Hills Hotel & Bungalows, The US Grant California Four Seasons Westlake Village, The Island Mandarin Oriental, Intercontinental, The Ritz Carlton Key Biscayne, Hyatt Regency, Barton G., Conrad, Four Seasons, Ritz Grand Rock Hotel & Casino Tampa, Four Seasons Hotel At The Surf Club, Faena Hotel, Chotto Matte Orlando The Ritz Carlton Four Seasons Troon North, JW Marriott Desert Ridge, Sanctuary on Camelback **Chicago** Four Seasons, The Ritz Carlton, Everest, Tru, **Fort Lauderdale** Ritz Carlton, Atlanta Four Seasons, W **Atlanta**, Ritz Carlton, Mandarin Oriental **Boston** Four Seasons Ritz Carlton Westchester, Shangri-La Hotel Vancouver **Toronto** Four Seasons Toronto, The Ritz Carlton Toronto, Fairmont Pacific

al, Rosewood Durrat, Nobu Hotel, Fairmont, Courtyard, Ritz Carlton, Palace Riyadh, Hilton Granada, Leylaty Jeddah **Jeddah** Corniche a Rosewood Hotel, Hilton, Crowne Plaza, Lumiere Restaurant Jeddah, Intercontinental, Bay La Sun, Sofitel, Palace, Four Seasons **Doha** Ritz Carlton, Four Seasons, Al Sharq Village and Spa, W Doha, Marriott Marquis, Rotana Oryx, The Plaza The Business Park, Guy Savoy, Souq Waqif Boutique Hotels, AKH-Aspire Hospitality, Westin, Eatopia, Tamarind Mandarin Oriental, Alwadi M Gallery, Intercontinental Doha Hotel And Residences, **Bahrain** Ritz Carlton, Gulf Hotel, Regency, Desert Palm Resort, Jebel Ali Golf Resort & Spa, Intercontinental Dubai Festival City, The Fairmont, Grand Hyatt, is, Sofitel Palm Jumeirah, Fairmont the Palm, Oberoi-Bussiness Bay, Al Manzil, Vida Hotel, Intercontinental Dubai Marina, Four Seasons Jumeirah, Jumeirah Lake Towers, Pullman Lake Towers, Habtoor Grand Resort & Spa, GQ Bar, **Abu Dhabi** Emirates Riyat, Westin, Hilton Capital Grand, Park Hyatt, Ritz Carlton, Dusit Thani, Rosewood Abu Dhabi, Intercontinental, Hyatt at Intercontinental, Duqm, Mysk By Shaza Al Mouj, Grand Millennium **Amman** Four Seasons, Grand Hyatt, Marriott Aqaba

, Raffles Hotel, Grand Hyatt, Four Seasons, Sheraton Towers, St. Regis, Aman Resorts, Gallery Hotel, Shangri-la, Mandarin Sands, The Fullerton Bay Hotel, One Farrer Hotel & Spa **Hong Kong** Cordis Hong Kong At Langham Place, Four Seasons, Nam Place, Watermark, The Ritz Carlton, Peninsula, Pacific Club **Macau** Legend Palace Hotel, Crown Casinos, Grand d, Sofitel, Sands, Four Seasons, Altira, Banyan Tree Resort, Sheraton, Conrad, Starworld Hotel Galaxy, Galaxy, Okura, Ritz-Regis Beijing, The Peninsula Palace, Shangri-La, W Beijing Changan Lijiang Pullman Lijiang Resort & Spa **Shanghai** Banyan Tree North Bund Shanghai, Twelve at Hengshan Shanghai - The Luxury Collection, Shangri La JingAn Shanghai, Renaissance Tokyo Hotel, L'Osier, Patina restaurant, Aioke restaurant, Hyuri Kamogawa Terrace, Park Hyatt Tokyo, Hyatt The Prince Gallery Tokyo Kioicho, Intercontinental Tokyo, Palace Hotel, Tokyo Baycourt Club **Kyoto:** Miyama-so, Granvia Kyoto, Brighton Hotel, XIV Kyoto Yase Rikyu **Osaka** Ritz Carlton, Westin, Osaka Marriott Miyako Hotel **Korea** Meridien Saigon, Intercontinental Hanoi Landmark 72, Sofitel Metropole Hanoi, Sheraton Nha Trang Hotel and Spa Banyan Ports World, Marriott Hotel, Shangri-La At The Fort, Okada, Shangri-La Mactan, Solaire, City of Dreams, Nobu, Sofitel ons Hotel Business District, Sheraton Gandaria, Hotel Mulia Senyan, Fairmont Jakarta **Myanmar** Hotel Kempinski Yangon, s Bangkok, Shangri La Bangkok **Malaysia** The Danna Lankgwawi, W Hotel, Banyan Tree Signature Pavilion Kuala Lumpur, **Mauritius** Royal Palm, The Beachcomber Paradise Hotel and Golf Club, The St. Regis Resort Mauritius, The Grand Mauritian gali Island, Sheraton Full Moon, Kurumba Resort Maldives, One & Only, Komandoo Island Resorts and Spa, Taj Exotica d Towers Mumbai, The Taj Palace Hotel New Delhi, The Westin Gurgaon New Delhi, The Westin Mumbai Garden City, The New Delhi, The Leela Bangalore, The Ritz-Carlton Bangalore, Fairmont Hotel Jaipur, Grand Hyatt Goa, **Sydney** Crown **and** OKO Dessert Kitchen Auckland Restaurant, Sofitel Wellington

ine, Le Royal Monceau-A Raffles Hotel, L'Envue, Hotel de la Tremoille, Pullman Tour Eiffel, The Peninsula Paris **London** ons Park Lane, Ritz London, 45 Park Lane, Intercontinental Park Lane, Grosvenor House, Berkeley Hotel, Rocco Forte tel, Bulgari Hotel London, Four Seasons Trinity, Shangri la Shard, Dakota Deluxe Leeds, Marriott Hotel Park lane, Stallion ie **Milan** Park Hyatt, Bulgari, Excelsior Gallia **Capri** Capri Palace Hotel Hapimag Resort Cefalu **Amsterdam** Hotel Okura, ndarin Oriental **Frankfurt** Jumeirah **Dusseldorf** Hyatt Regency **Algarve** Conrad **Brussels** Steigenberger, Rocco Forte ichmont **Lausanne** Royal Savoy **Zurich** Park Hyatt, Marriott Zurich, Hotel Atlantis By Giardino **Budapest** Four Seasons, melbourne, Conrad **Warsaw** Raffles Europejski Hotel **Vienna** Hilton **Moscow** Park Hyatt g, Four Seasons Lion Palace

myglasstudio.com  
40548

- AFRICA

myglasstudio.com  
20893

INDIAN OCEAN - AFRICA

myglasstudio.com  
Mob: +359878754548

SOUTH - EAST ASIA

myglasstudio.com  
Mob: +38970273701



MyGlassStudio

www.the-glass-co.com