

STEELSTRONG

Technology showcase 2024



CONTENT

About us	03
Sheet metal fabrication	04
- Laser cutting	05
- Laser beam pipe cutting	06
- Metal bending	07
- Panel sawing	08
Metalworking	09
- Welding	10
- Tapping	11
- Tube bending	12
- Profile rolling	13
- Spot welding	14
Machining	15
- CNC turning	16
- Turning	17
- Milling	18
- CNC milling	19
Surface treatment	20
- Abrasive blasting	21
- Powder coating	22
- Solvent based painting	23
Additional products	24-25
Construction	26
Our partners	27
Contact	28

ABOUT US

Since its foundation more than 20 years ago, “KATKER 2005” Ltd has become a prominent player in the Hungarian sports scene. Our company is a market leader in the design, manufacture, installation, and sale of indoor and outdoor sports parks in Hungary. Our brand name BESTRONG is internationally protected.



Following our recent technological, infrastructural, and workshop developments, our manufacturing capacity has significantly expanded. **As a result, we have launched our metalworking subcontracting services under the STEELSTRONG brand.**

Our primary partners are domestic and foreign companies in the construction, automotive, as well as agricultural and other machinery manufacturing sectors.

In addition to the structural components of smaller metal structures, our well-prepared team also undertakes the design, production, and installation of various metal building accessories (railings, gates, fences, canopies, brackets).

Our key partners include:

HUNÉP Zrt., METRI Automotive Kft., FlexiForce Hungary Kft., Schaeffler Debrecen Kft., Vámosgép Gép és Acélszerkezet Gyártó Kft., MANZ Hungary Gépgyártó Kft.



A close-up photograph of a sheet metal fabrication process. A large, flat metal sheet is being fed into a machine. A sharp, pointed tool is cutting through the metal, creating a clean edge. The background shows various industrial components and machinery, including a blue structure on the left and a complex metal assembly on the right. The lighting is bright, highlighting the metallic surfaces and the precision of the manufacturing process.

SHEET METAL FABRICATION

LASER CUTTING

TruLaser 3030 fiber (L81) flatbed laser cutting machine can cut structural steel, mild steel, aluminum, copper, and brass with high quality, efficiency, and accuracy. The TruLaser ensures the highest quality edges even for thicker plates.

Max. laser power: 3kW

Maximum sheet size: 3000 x 1500 mm

Maximum sheet thickness:

- Structural steel: 25 mm

- Aluminum and stainless: 20 mm

Accuracy: ± 0.05 mm



LASER BEAM PIPE CUTTING

TruLaser Tube 5000 fiber laser tube cutting equipment can quickly, accurately and efficiently cut aluminium, structural and stainless steel to size. Using with bevel cutting technology, the equipment allows bevel cutting of workpieces up to 45°. The equipment is fitted with a tube feeder capable of feeding bundled fibre material.

Workpiece sizes:

Max. laser power: 3kW

Max. workpiece length: 4500 mm

Maximum wall thickness:

- **Structural steel: 8mm**

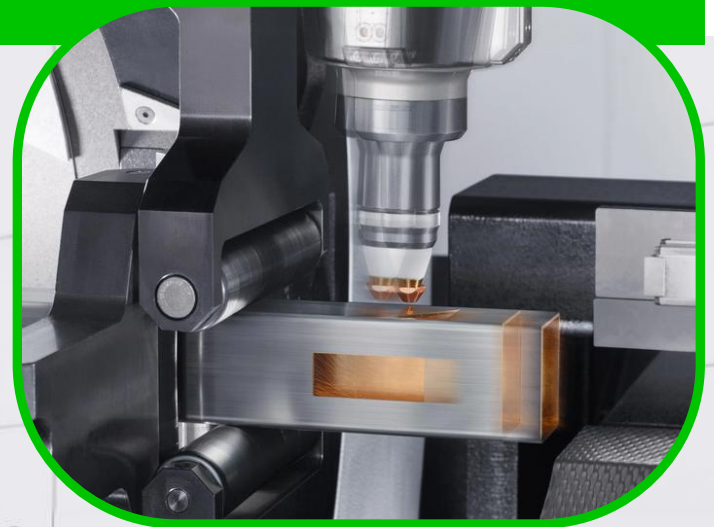
- **Aluminium and stainless steel: 6 mm**

Max. enclosing diameter of circular cross-section tubes: 152 mm

Min. enclosing diameter of circular cross-section tubes: 20 mm
(optional 15 mm)

Raw material and finished piece 20 kg/m, max. 130 kg

Accuracy: $\pm 0,06$ mm

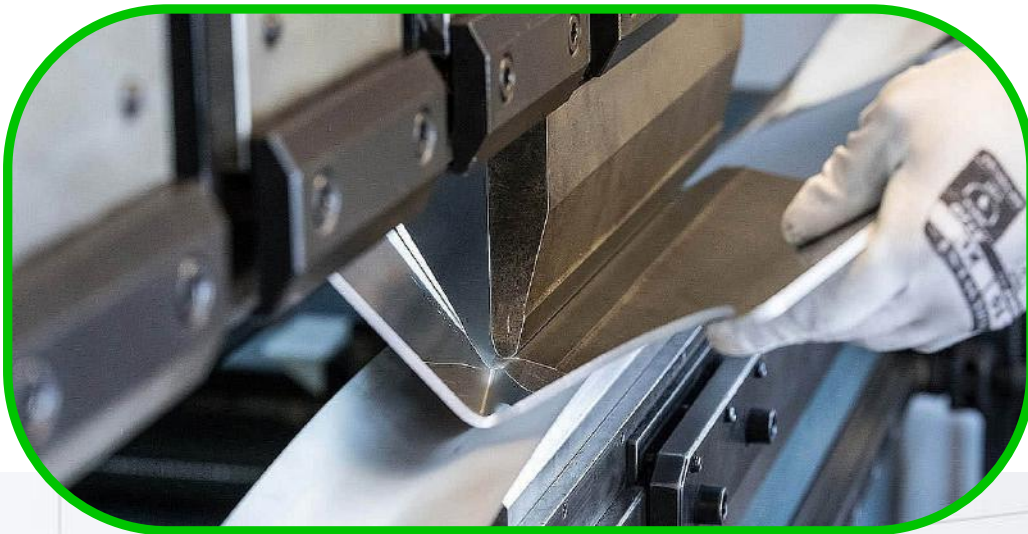


METAL BENDING

TruBend 5130 (B23) edge bending tool will bend any structural steel, stainless steel, aluminium, copper, and brass workpiece to the desired shape.

Max. bending length: 3230 mm

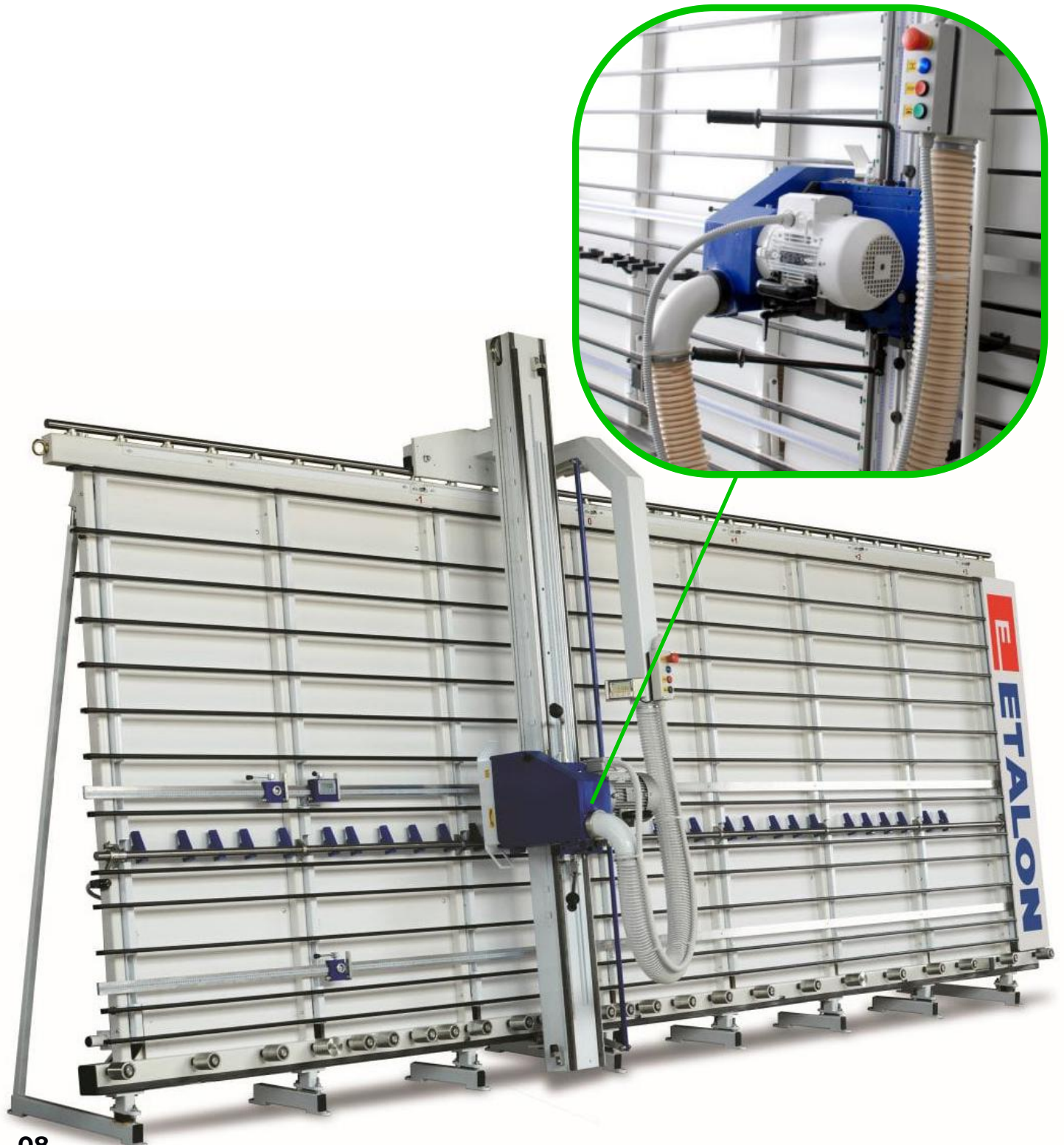
Max. pressure force: 1300 kN



PANEL SAWING

Our **Etalon Basic** vertical panel saw machine can cut wood particleboard, OSB, MDF, plastic panels, aluminium composite, some building materials, decorative products, and other panelized materials to size with high quality and precision.

Maximum panel size: 3500 x 2100 x 60 mm





METALWORKING

WELDING

With our high performance **MIG/MAG, TIG** equipment, our skilled technicians can accurately weld any structural steel, stainless steel, and aluminium workpieces.

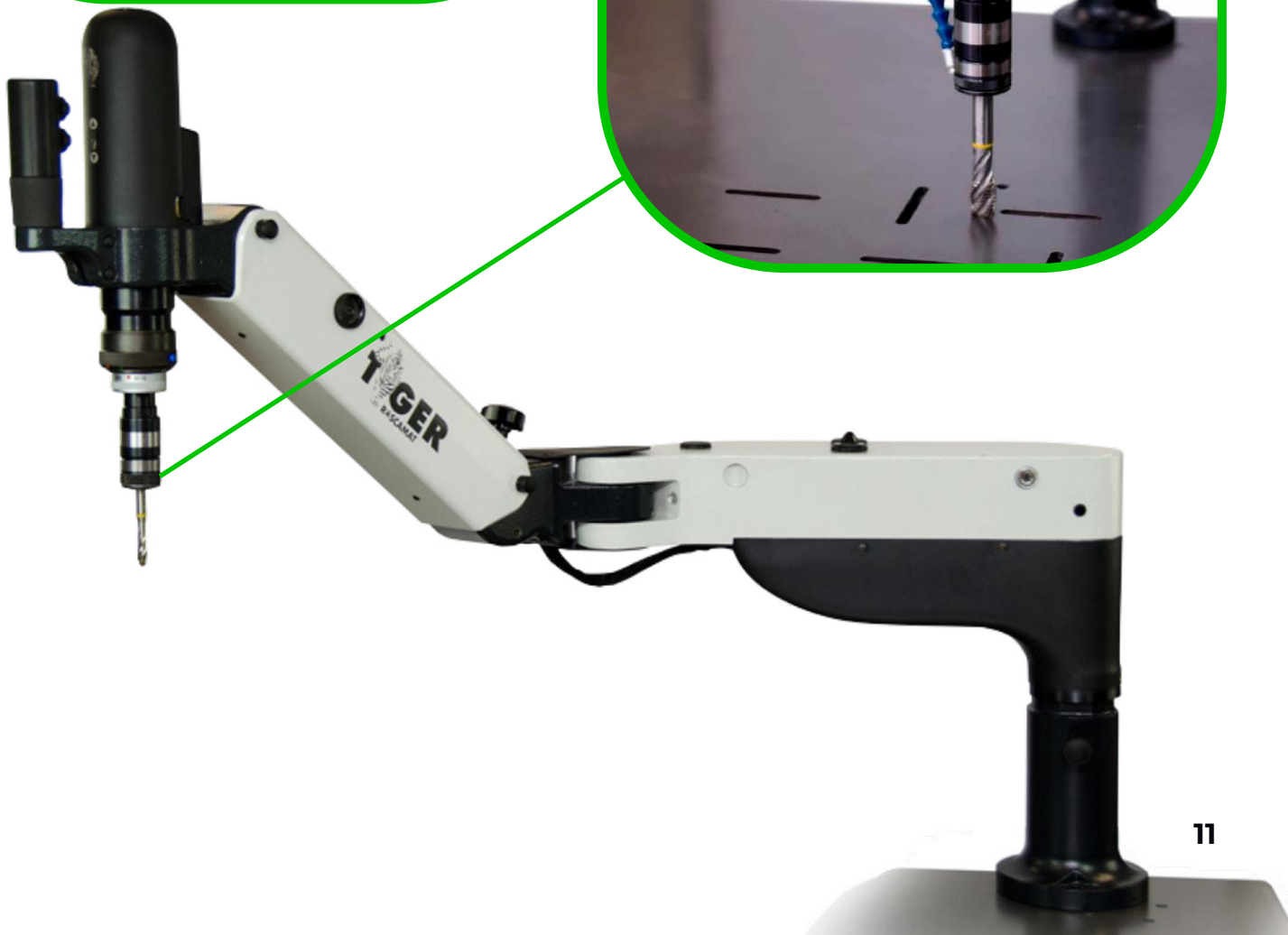
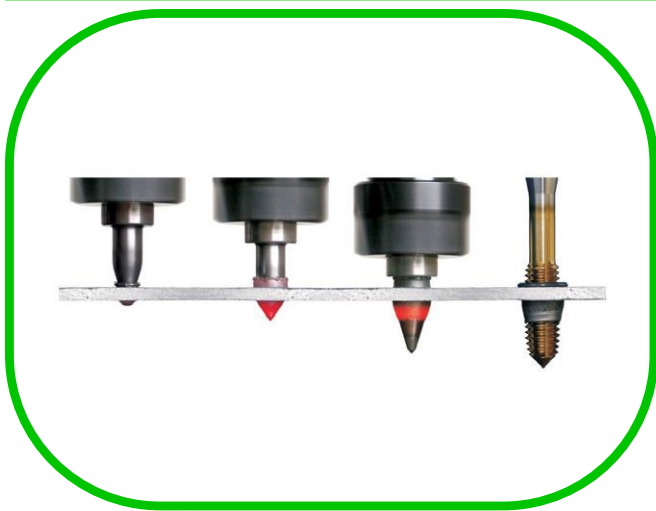


TAPPING

The **Roscamat Tiger 002** threading machine allows for quick, accurate, and efficient threading of holes using either **drilling** or **forming** technologies. Both technologies can be applied to the machining of structural steel, stainless steel, aluminum, and other non-ferrous metals.

Our technology also enables **flow drilling**, which allows for the creation of load-bearing threaded connections even in materials with thin wall thicknesses.

Thread size: M3-M24



TUBE BENDING

Our **Ercolina TOP 030V2T** tube bending machine can bend structural steel, stainless steel, and aluminium tubes from 21.3 mm up to 60.3 mm in diameter with high speed and precision to achieve the curve desired by the customer.

Maximum workpiece dimensions:

21,3 mm diameter tube with R67 radius

26,9 mm diameter tube with R82 radius

33,7 mm diameter tube with R67 and R112 radius

42,4 mm diameter tube with R90 and R130 radius

48,3 mm diameter tube with radius R150

60,3 mm diameter tube with R190 radius



PROFILE BENDING

With our profile rolling machine **Metallkraft PRM 35 F** we can also bend sections, tubes, rods and bars of aluminium, steel, and stainless steel plates.

Maximum workpiece size:

30x30 Locking section

40x40 Closed section

50x50 Closed section

26,9 mm diameter tube

33,7 mm diameter tube

42,4 mm diameter tube

60,3 mm diameter pipe



SPOT WELDING

Telwin PCP 18 our rack spot welding machine is currently equipped with 700mm water-cooled arms and allows the permanent joining of elements with a plate thickness of 3+3 mm.

Main voltage: 400 V

Max. spot welding current: 9700 A

Power: 15 kVA

Max. welding material thickness: 3+3 mm

Max. electrode force: 190 daN

Arm length: 350 mm and 700 mm





MACHINING

CNC TURNING

With the **SL-TURN-52 CNC** lathe, we can turn with a precision of ± 0.005 and high efficiency, mostly carbon, stainless steel, as well as the most commonly used light and non-ferrous metal materials in the industry.

WORK AREA:

Largest turning diameter over bed: 700 mm.

Largest turning diameter over cross slide:
450 mm

Distance between centers: 1250 mm

Current chuck diameter: 8"

SPINDLE:

Max. speed: 4500 RPM

Spindle bore: 51 mm

Drive: Belt

Number of ranges: 1 (optionally 2)

TOOLING:

Number of tool positions: 12 pcs

Tooling: VDI40 clamping

Number of driven tool positions: 12 pcs

Maximum speed: 5000 RPM

TAILSTOCK:

Operation of tailstock quill/body

Internal taper size: MT5

CNC CONTROL:

Touchscreen NCT 304/19"



TURNING

Turning tasks are carried out with our **Optimum OptiTurn TH 4615V** universal lathe.

Maximum workpiece size: 460 mm diameter over 1500 mm length

Accuracy: $\pm 0,05$ mm



MILLING

Milling tasks are carried out using our **Optimum Optimill MT50** universal milling machine.

Maximum workpiece size: 800 x 240 x 340 mm

Accuracy: $\pm 0,05$ mm

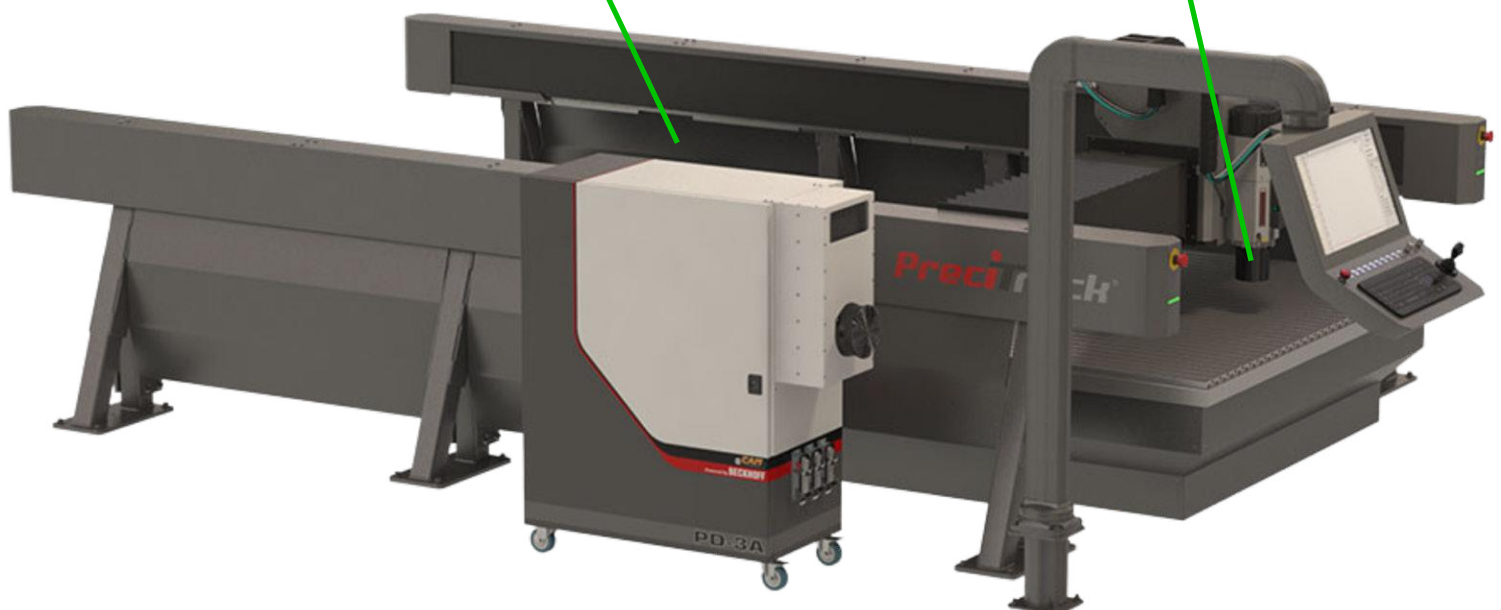
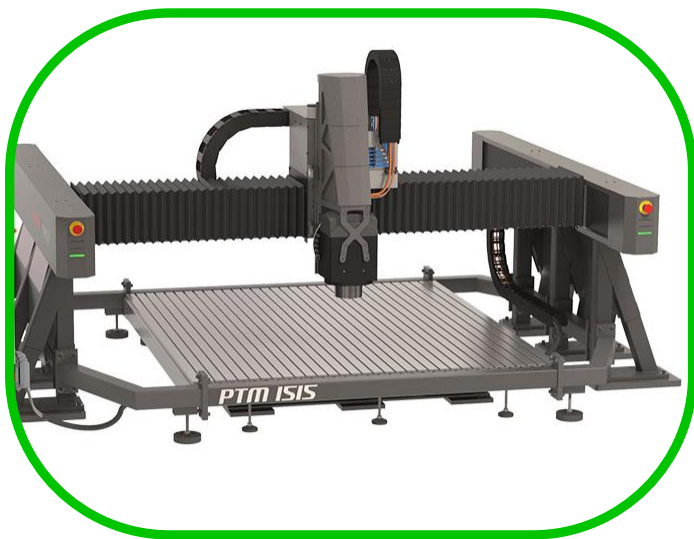


CNC MILLING

Our CNC milling machine **PTM 1530 M PRO** is used for the precise and high quality machining of wood particleboard, OSB, MDF, plastic boards, and aluminium composite materials.

Maximum workpiece size: 3000 x 1500 x 200 mm

Accuracy: $\pm 0,1$ mm





SURFACE TREATMENT

ABRASIVE BLASTING

With our modern steel and granite grit cleaning equipment, we undertake the cleaning and rust removal of any metal surface.

Maximum capacity: 6000 x 3500 x 3000 mm



POWDER COATING

Our specialists powder coat and bake parts of various sizes in our high-capacity, conveyer-track, **cyclone powder coating machine**, which can be mounted on a frame.

Maximum workpiece size: 6200 x 1200 x 2000 mm

Maximum workpiece weight: 500 kg



SOLVENT BASED PAINTING

In our **Metron Athena** paint booth, we can guarantee a consistent paint quality that meets your needs, whether for small, medium, or large series.

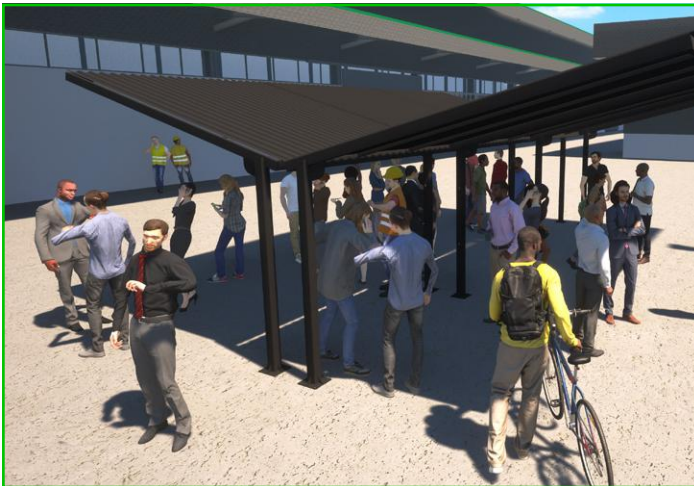
Maximum workpiece size: 6000 x 4000 x 2850 mm



ADDITIONAL PRODUCTS



The **“Modern Outdoor Waiting Area”** features durable metal columns and a solid roof, providing an elegant appearance in both industrial and residential settings. It ensures comfortable waiting conditions and can be equipped with benches and waste bins as needed, thereby enhancing functional comfort.



The **“Smoking Shelter”** is an elegant and functional outdoor structure that provides protection even in extreme weather conditions. Our product is ideal for public spaces, office exteriors, or shopping center outdoor areas. The thoughtful design allows the structure to blend into any environment and provides a comfortable covered area for smokers.



Our **„Security TV Stand”** is made with a strong metal frame and comes in a lockable design, ensuring the safety of the technical equipment and its cabling housed within. The system provides adequate ventilation and protection against dust and moisture for TVs up to 50”-55” in size, as well as for mini PCs and keyboards. The stand can be ordered in both wall-mountable and rubberized, lockable wheeled versions. The stable internal mounting of the technical devices is guaranteed by the VESA 200 standard hole pattern for TVs and VESA 100 for mini PCs. The elegant design perfectly complements any interior space. The system is ideal for displaying multimedia content as a tool for exhibitions, presentations, in industrial environments, and any community space requiring protection.





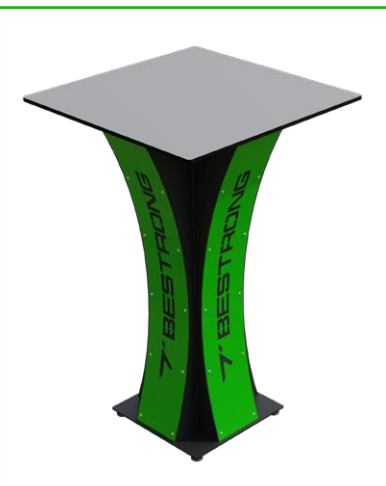
The “**Outdoor Bench with Table**” features an elegant design with a durable, powder-coated metal frame. The seating and table surfaces are available in WPC or wood versions. The assembly is easily mobilized and provides a practical alternative for outdoor leisure activities in any environment.



The “**Outdoor Bench**” is made with a robust, powder-coated metal frame for durable use, and its seating surface can be ordered in either WPC or wood versions. The product’s aesthetic design perfectly fits any outdoor environment. The metal structure can be personalized upon request with a laser-cut logo or inscription.



The “**Bench with Integrated Table**” combines functionality and style with its bent metal structure. The bench and tabletop boards are optionally available in wood and WPC materials. The product’s compact design creates a comfortable and inviting outdoor community space in any setting. The powder-coated metal structure can be customized with a laser-cut logo or inscription as desired.



The “**Outdoor Bar Table**” is designed to enhance outdoor entertainment venues with its attractive shape and style. Built for durability and outdoor use, its robust construction and stylish design make it an excellent centerpiece for any outdoor gathering location.

CONSTRUCTION



Manual and mechanical groundworks:

- Trenching
- Excavation
- Ground extraction

Concrete works

Construction installations (except alpine):

- Installation of railings
- Building fences
- Installation of eaves and brackets
- Assembling shelving systems
- Assembly of stands and event technology metal structures



Paving:

- Cobblestoning
- Rubber brick paving
- Rekortan laying
- Artificial turf installation

OUR KEY PARTNERS



UNIVERSITY of
DEBRECEN



MASTIFF
CARGO BIKE



The products and components manufactured in our facility undergo strict quality control based on our **ISO 9001:2015** Quality Management System. Our production is organized according to the **ISO 14001:2015** Environmental Management System standard.

Mailing Address: "KATKER 2005" Ltd.
4002 Debrecen Pallag 044/1 hrsz. Ipari park

REQUEST FOR QUOTATION:

Telephone Number:

+36 70 320 5606

Email Address:

sales@steelstrong.eu

Website:

www.steelstrong.eu

www.steelstrong.hu

