

TO HULL, EAST YORKSHIRE
AND NORTHERN LINCOLNSHIRE

YourMove

LIVE : WORK : EXPLORE

LIVE in a place that
instantly feels like home

WORK in a dynamic region
of opportunity and innovation

EXPLORE a rich culture of
coast, country and city life



Future Humber

**Promoting the region's
distinctive strengths to
the widest audience and
accelerating opportunities
to unlock the potential
in the Humber**

futurehumber.com



**Connecting powerful
ambassadors for
change, working
together to build a
prosperous future for
all in our region.**

 **Bond
holders**



CONTENTS

Interactive version
click on underlined text
to access more information



Welcome	4-5
Relocating to the Humber region	6-7

Hull

Living	8-9
Education.....	12-14
Food and Drink	16-19
Culture, Attractions and Retail	20-22
Health, Wellbeing, Sports and Activities	23-25

East Yorkshire

Living	28-29
Education.....	30-32
Food and Drink.....	36-37
Culture, Attractions and Retail	38-39
Health and Wellbeing	40-41
Sports and Activities	42-43

North East Lincolnshire

Living	44-45
Education.....	48-49
Food and Drink	50-51
Culture, Attractions and Retail	52-53
Health, Wellbeing, Sports and Activities	54-55

North Lincolnshire

Living	58-59
Education.....	62-63
Food and Drink	64-65
Culture, Attractions and Retail	66-67
Health, Wellbeing, Sports and Activities	68-69
Day trips on your doorstep	70-71
Volunteering	72
Business in the Humber region	74-81

A warm welcome...





Photo credit: Tom Arran

MAKE YOUR FUTURE IN THE HUMBER

Relocating – it's a bold move. When choosing a new place to live, there is so much to consider. Whether the decision is driven by career, lifestyle or getting that work-life balance right, we have a hidden gem of an area that could, quite literally, be right up your street.

Enter the Humber region. This unique and beautiful part of the world stretches from breathtaking coast to tranquil countryside, with a vibrant city at its centre and an array of charming market towns and quaint villages.

Spanning the two counties of Yorkshire and Lincolnshire, it's an attractive place to live, work and explore. Affordable properties, comparatively low cost of living and excellent connectivity to the rest of the UK and beyond make it a desirable spot – whatever pace of life you crave.

Our diverse and ever-growing local economy provides an abundance of exciting, progressive career opportunities, ideal for anyone looking for a change.

Away from work, you'll never be bored. The region has a vast and varied range of things to do – day or night. Festivals, museums, nightlife, events, art, theatres, concerts, shopping, sports and leisure activities – the list is endless.

Family comes first when it comes to relocating with children. Fortunately, the Humber is home to many first-class education providers – from nursery through to college – along with weekend activities to keep them entertained and family-friendly places to explore.

Like what you're hearing? Read on. Your Move brings together everything we love about our region – everything we know you'll love too – all to help shape your decision about relocating here.

Make your move – make our region your home.



DID YOU KNOW?

HULL NOW A BETTER PLACE TO LIVE THAN YORK AND MANCHESTER
ILIVEHERE



LOOKING FOR A NEW BUILD?

Beal Homes create exceptional homes in Hull, East Yorkshire and Lincolnshire
<https://beal-homes.co.uk/>

YOUR MOVE: To Hull, East Yorkshire and Northern Lincolnshire

From charming seaside locations and quaint villages, to leafy suburban towns and cosmopolitan cities, wherever you feel most at home, you'll find it in the Humber region.

Feel at home in the Humber





The relatively low cost of day-to-day living in the Humber region makes it an ideal place to relocate. House prices are good value across the region and there are lots of different kinds of accommodation available.

While there are employment opportunities across the region in all kinds of sectors, the Humber is also a great place to work remotely. There is good broadband connectivity across the region, especially in Hull, which has a full-fibre network, one of the fastest in the country. The area also has fantastic transport links.

The Humber region is a great place to get outdoors, with lots of green space. If you're more of a city dweller, there are endless restaurants, cafés and bars to try. Whatever pace of life takes your fancy, there's an opportunity to explore it here in the Humber.



Yorkshire and Humber Relocation
is the leading relocation and property
finder company in the region
<https://yorkshireandhumberrelocation.co.uk/>

FIVE REASONS TO RELOCATE:

- A FANTASTIC QUALITY OF LIFE
- GOOD VALUE COST OF LIVING
- LOTS OF GREEN SPACE
- WELL CONNECTED
- LOTS OF THINGS TO SEE AND DO



COMPARE THE COSTS

• PINT OF LAGER

Hull **£3.45**

London **£5.00**

Source: University of Hull

• MONTHLY GYM MEMBERSHIP

Hull **£26.19**

London **£42.50**

Source: University of Hull

• AVERAGE HOUSE PRICE PER AREA

Hull **£147,515**

East Yorkshire **£201,946**

North Lincolnshire **£190,146**

North East Lincolnshire **£146,262**

Source: Zoopla

• ONE BEDROOM FLAT RENT MONTHLY

Hull **£452.50**

London **£1,926.72**

Source: University of Hull

• CINEMA TICKET

Hull **£5.50**

London **£13.00**

Source: University of Hull

YOUR MOVE: To Hull, East Yorkshire
and Northern Lincolnshire



Warning
Unsafe building
Keep out

Cosmopolitan and colourful Hull



As the old adage goes, it's never dull in Hull! And it's true – there really is always something going on in the city.

IN THE HEART OF IT



You can choose to live in any number of neighbourhoods with a character of their own - from the historical splendour of **The Avenues**, with its Victorian townhouses and the fun vibe of HU5, to the thriving **Fruit Market** area. There are also the waterside **Marina** and **Victoria Dock** areas which are home to new build apartments and modern townhouses. You can even live in the heart of it all in Hull's **Old Town**, in a historic terrace or new apartment.

HOT PROPERTY:

Properties in Hull had an overall average price of **£166,652** in **2022**.

- Terraced average price of £129,053
- Semi-detached average of £188,888
- Detached properties fetching £307,869

*National average for a detached house is £365,357

EXAMPLE HULL PROPERTY:

This stunning Grade II-listed townhouse has five bedrooms, two bathrooms and permission to convert it back to a residential property.

Photo credit:
Wigwam Homes

Life in Hull city centre is varied and ever-evolving. After benefitting from a multi-million pound regeneration scheme, it is bustling and home to shops, eateries, bars and entertainment aplenty.

There are many parks to spend your leisure time, and lots of entertainment at the city's theatres and **Bonus Arena**, and museums to spend a rainy day - exploring everything from dinosaurs to maritime, to the submarium at **The Deep**.

The city centre is also host to a number of events across the year - so there's always something to do on your doorstep - from food and music festivals to arts events, and the chance to explore Hull's rich heritage through tours.

Photo credit: The Deep



FIVE PLACES TO EXPLORE ON A WEEKEND:

- Old Town
- Trinity Market
- Fish Trail
- Pearson Park
- Humber Street and Marina

FIVE ANNUAL EVENTS TO SEE:

- Christmas Lights Switch On
- Freedom Festival
- Hull Jazz Festival
- Hull Pride
- Summer Street Food Nights

Whilst searching for your new property in Hull, check out **Humber Lofts**, which offers serviced apartments - a luxury hotel alternative
<https://www.humberlofts.com/>

YOUR MOVE: To Hull, East Yorkshire and Northern Lincolnshire



CASE STUDY

NAME: Samantha Garrod

AGE: 32

ROLE: UK Partnerships Manager for ASM Global, based at Hull's Bonus Arena

MOVED FROM: Brighton, having worked in London after graduating from the University of Hull

NOW LIVES: The Avenues, West Hull



WHAT DO YOU LOVE ABOUT WHERE YOU LIVE?

I live in the HU5 area of Hull – I love that it's an independent food, drink and music hub with the leafy avenues running alongside. As a city, Hull has developed but has kept its strong sense of community. The local businesses reflect that and work together on creative projects with pop-up food nights, art installations and live music. There's also always something to do – I take part in art classes, a book club, pottery – you just have to look for it!

DID YOU KNOW?

BONUS ARENA HAS BEEN NAMED ONE OF THE BUSIEST ARENAS IN EUROPE IN THE 2023 POLLSTAR CONCERT MARKET RANKINGS

WHAT ATTRACTED YOU BACK TO THE REGION?

Being closer to family and friends played a large part, but in addition I love that there is the perfect combination of city, coast and countryside right on our doorstep to enjoy. Hull is a very affordable place to live – you get so much more for your money.

WHAT CHANGES HAVE YOU SEEN SINCE MOVING BACK TO THE REGION?

I think that Hull has always been a great place to live with its history, however since it was the City of Culture in 2017 it's improved even more. Bonus Arena being built has really put the city on the map, plus Hull is frequently used as film locations for large productions such as *The Crown*. There's been a lot of regeneration, especially in places like Humber Street – the converted warehouses are now thriving with some of the best places to eat, drink and shop.

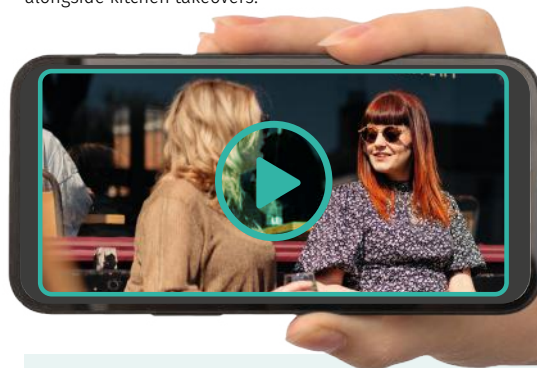


“
For the price of renting
one bedroom in London
you can afford a whole
house here!”



WHAT'S THE NIGHTLIFE AND LEISURE LIKE IN THE CITY?

I love it – there is always something going on. The local music scene is thriving and has gone from strength to strength. Mark Page and his team have worked hard to bring more attention to local bands by growing **Humber Street Sesh** year on year. In addition, the food is great. Mr Moody's Tavern on Newland Avenue has the BEST roast dinners, Oishii Ne serves amazing sushi, and venues like Brew and **Marla's** have art installations alongside kitchen takeovers.



SAM'S TOP TIPS FOR LIVING IN HULL...

- Hull's independent bakeries are a real highlight – Paragon Arcade with Milchig, plus Trinity Square with Hearth and Humber Street's Flour & Feast
- Make sure to head to The New Adelphi Club for a gig – one of my all-time favourite venues steeped in music history
- Plant & Paint is one of the best shops for all things green!

YOUR MOVE: To Hull, East Yorkshire and Northern Lincolnshire

Relocating with family? If so, finding the right nursery, school or college will be high on your agenda. The good news is that Hull has many to choose from, offering inspiring teaching in inclusive, nurturing settings that will motivate them to grow and flourish.

Get educated



Photo credit: Hull College



Early years

Hull is home to a number of outstanding pre-schools and nurseries, meaning you can rest assured your little one is getting the best start in life.

BEST RATED DAY NURSERIES IN HULL*

- Tiptoes Day Nursery
- Westcott Tots
- Playmates Pre-School
- St John's Pre-School Nursery
- Bright Horizons Hull Kingswood Day Nursery and Pre-School

Source: <https://snobe.co.uk/ofsted-outstanding-nurseries/kingston-upon-hull> *Correct as of May 2023.



Photo credit: Malet Lambert

Schools

86% of Hull's schools have been assessed as Good or Outstanding by Ofsted – which is 4% above the latest regional average (correct Jan 2022).

One of these is **Malet Lambert**, which has a long and proud history dating back to 1932 – and was the first in the region to become an Inclusion Quality Mark Flagship School.

91%
OF HULL PRIMARY
SCHOOLS ASSESSED AS
**GOOD OR
OUTSTANDING**
BY OFSTED
NATIONALLY, THE AVERAGE
FOR PRIMARY SCHOOLS IS 88%

CLICK FOR
FULL LIST
OF HULL
SCHOOLS



71 primary schools **6 special schools**
13 secondary schools **7 alternative providers**



Photo credit: Wilberforce College

College life

From academic qualifications to apprenticeships and career-focused courses, Hull's sixth form colleges and further education providers have something for everyone. Choose from **Hull College**, **Wyke Sixth Form College** or **Wilberforce Sixth Form College**.

**HULL COLLEGE IS ONE
OF ONLY A HANDFUL OF
COLLEGES TO OFFER
PROGRESSION FROM AGE 14
TO MASTERS LEVEL**



Photo credit: Hull College

Hull College

Hull College delivers career-focused education and training for young people and adults, and continues to be a local leader in providing highly-skilled employees to meet the needs of employers and industries in the region.

Supporting more than 5,000 students each year, the college offers a comprehensive range of further and higher education courses, apprenticeships and training opportunities for businesses.

YOUR MOVE: To Hull, East Yorkshire
and Northern Lincolnshire

UNIVERSITY OF HULL



There's no need to look beyond Hull for a fantastic university. The **University of Hull** is one of the top universities in Yorkshire and the Humber, according to The Times and Sunday Times Good University Guide 2023. www.hull.ac.uk

“ Taking our place in the top four in the guide's ranking for Yorkshire and the Humber for the second year is a positive result. ”

Professor David Petley, Vice-Chancellor
at the University of Hull

Employer-led learning

Specialising in Engineering, Creative, and Technical Digital, **Ron Dearing UTC** provides 14-18-year-old students with unique, employer-led education – giving them a fast track into exciting and lucrative careers. <https://www.rondearingutc.com/>



Photo credit: Ron Dearing UTC

Photo credit: HETA



HETA is a leading training provider in the Yorkshire and Humber region, delivering specialist training for young people looking to join the engineering industry. <https://www.heta.co.uk/>

Independent education

Set in beautiful grounds with first-class facilities, **Hymers College** prides itself on its outstanding results, excellent pastoral care and an extensive co-curriculum programme. In fact, it was named in The Sunday Times' Parent Power Guide 2022 – which identifies more than 1,600 of the highest-achieving state and private schools in the UK.

For 4-11 provision, **Froebel House** is a small, friendly preparatory school in the Avenues area of Hull, providing a broad, balanced curriculum and a motivating, caring learning environment.

DID YOU KNOW?

EXCLUDING INDEPENDENT SCHOOLS,
RON DEARING UTC WAS RANKED AS THE
**6th BEST FOR STUDENT
PROGRESS IN 2020,**
AND WAS NAMED AS THE
**COUNTRY'S TOP
PERFORMING SCHOOL
OR COLLEGE IN 2022**
FOR THE PERCENTAGE OF STUDENTS
MOVING ON TO APPRENTICESHIPS
FOLLOWING SIXTH FORM



Join us, an organisation that puts people first.

Where everyone has opportunities to grow, and everyone can make a difference to the lives of people in Hull. Here at Hull City Council, we aim to make a positive difference to everyone who lives and works in Hull as well as visitors.

Every day we deliver vital services for people who live here; we take care of adults and children who need extra support, we make our neighbourhoods safer and more enjoyable places to live, we run our parks and museums, we support business and invest to create jobs and opportunity.

We're always on the lookout for people who share our passion for Hull, who are committed and work hard to make a difference to the lives of people who live and work here. In return, you can expect fantastic rewards and benefits including a good salary and pension, generous holiday entitlement, learning and development opportunities, the chance to progress your career, and

various schemes such as flexible hours and working arrangements to achieve a healthy balance between your work and personal life.

Take a look at our current vacancies at

www.workingforhullcitycouncil.org.uk

Email: recruitmentteam@hullcc.gov.uk

Call us: 01482 333 300

Hull Training and Adult Education

As well as a wide choice of career options, we also pride ourselves on our apprenticeship provision, matching the right apprentice to the right employer.

Hull Training and Adult Education has a long history of working with local employers. If you want to become an apprentice, or are looking to take on an apprentice, let our dedicated placement team support you by visiting:

www.hcctraining.ac.uk



Hull is brimming with an eclectic mix of independent eateries and bars, serving fantastic food and drinks from around the world – with something for everyone to enjoy.

From fine dining to food festivals, from bakeries to breweries, and from cocktails to coffee, explore Hull's diverse culinary scene.

MARLA'S Drink and dine SHOP AND EATERY



STREET EATS



Experience the enticing sights and smells of freshly-cooked street food at **Trinity Market** or at one of the regular food festivals, such as **Hull Street Food Nights** in Zebedee's Yard.

PINT WITH YOUR POOCH?

If you fancy a few drinks with your four-legged friends, here's our round-up of Hull's best dog-friendly pubs.

- **Newland Tap**, Newland Avenue
- **The Sailmakers Arms**, High Street
- **Dairycoates Inn**, Hessle Road
- **Hop & Vine**, Albion Street
- **Ponto Lounge**, King Edward Street



PATTIE BUTTY

Deep-fried, battered mashed potato seasoned with sage and sandwiched in a buttered breadcake – it's a Hull delicacy! Don't knock it until you've tried it – like YouTube star RateMyTakeaway, who declared pattie butties with mushy peas were "the future". Pop into any of the city's fish and chip shops to give it a go – or head to **Atom Hull** on Princes Avenue, where they serve giant pattie butties alongside their beers.

THE BEST BREAKFAST SPOTS

Whether you start your day with a coffee and croissant, or plump for a full English fry up, check out the breakfast and brunch menus at these places...

- **Nibble @TheDock**, Queen Street
- **Thieving Harry's**, Humber Street
- **The Barista**, Newland Avenue
- **McCoy's**, Princes Dock Street
- **Marla's**, Princes Avenue



ALL HAIL THE ALE

Real ales, craft beers and quaint pubs your thing? **Hull's Ale Trail** will be right up your street – taking you on a tour of the city's oldest pubs, including the **George Hotel**, with the smallest window in England, **Ye Olde Black Boy**, Hull's oldest pub dating from 1337, and **Ye Olde White Harte**, where, it is alleged, the English Civil War started in 1642.

Other pubs to check out include:

- **The Bonny Boat** – tiny pub with lots of character in Trinity House Lane
- **Lion & Key** – local real ales and ciders and renowned for its fish and chips, in High Street
- **Head of Steam** – craft beer, real ale, cocktails, spirits and wine, in Trinity Square
- **Arthouse** – art, music and alcohol, in Princes Avenue
- **Taphouse** – on-site brewery located in Humber Street

.....

ECLECTIC EATS



Photo credit: Allenby Commercial

FANCY A DATE NIGHT OR HAVE AN UPCOMING CELEBRATION? HERE ARE SOME ECLECTIC RESTAURANTS TO TRY

For modern and imaginative cooking which displays the very best of British and Spanish ingredients, try **The Hispanist**, Paragon Arcade – which scooped Tripadvisor's Travellers' Choice Award 2022.

Located in a reclaimed fruit merchants, **Butler Whites**, Humber Street, promises casual, bistro-style dining with its experimental menu. Its popularity has seen it named as one of Hull's best restaurants by the Yorkshire Food Guide.

Run by a Greek family, **The Greek**, in Princes Avenue, serves up authentic, homemade cuisine. It was crowned Hull's favourite restaurant in the Hull Loves Awards in 2019.

A newbie on Hull's thriving restaurant scene is **Hearth**, in Trinity Square. Fresh bread and delicious desserts from Hearth's sister bakery are served alongside dishes cooked using local, seasonal ingredients.



Providing an extraordinary fusion of British and authentic Indian cuisine, **Tapasya** in Humber Dock Street, is a multi award-winning fine dining restaurant – with stunning views of Hull Marina to boot.

Hull's first Vietnamese restaurant, **Viet Memories**, in Brook Street, serves healthy, hearty authentic cuisine using the freshest ingredients. Pay a visit to its sister restaurant, **Long An**, too, which is just around the corner on Paragon Square – and ranked in the top five restaurants in Hull on Tripadvisor.

COCKTAIL-O-CLOCK

Sit back and sip on a cocktail with stunning panoramic views of the city and beyond at **Skyfall**, a bar located at the top of K2 – Hull's tallest building. Or pay a visit to **The Lexington**, a rooftop bar above the DoubleTree by Hilton hotel on Ferensway. If you love a cocktail, other must-visit bars include **Bar82**, Princes Dock Street, which offers a brilliant bottomless brunch, and **The Bar at 55 Whitefriargate**, a private members' bar hidden within the vaults of an old bank.



A STROKE OF GIN-IUS

Hotham's is an award-winning gin school and distillery at the heart of Hull's city centre on Whitefriargate. Learn everything you need to know about this sensational spirit – and have a go at the ancient art of distilling to create your very own gin.



YOUR MOVE: To Hull, East Yorkshire and Northern Lincolnshire

Hull's culture and creativity

Hull is rich with art, heritage and talent. The art galleries, museums, independent shops and annual festivals make Hull a vibrant and exciting place to be.



Photo credit: Visit Hull



DID YOU KNOW?

**HULL WAS
UK CITY OF CULTURE 2017**
DELIVERING MORE THAN
2,800 EVENTS, EXHIBITIONS,
INSTALLATIONS AND ACTIVITIES

FIVE ART AND HERITAGE DESTINATIONS TO VISIT:

- [Ferens Art Gallery](#)
- [Humber Street Gallery](#)
- [Hands on History Museum](#)
- [Streetlife Museum of Transport](#)
- [Maritime Museum](#)

SHOW TIME

Hull's theatre scene is thriving, with many performances throughout the year. Enjoy a show at [Hull New Theatre](#), listen to live music at [Hull City Hall](#), or have a family day out to watch a children's performance at [Hull Truck Theatre](#). You can even experience open-air performances during the summer at venues such as [Stage @TheDock](#) down at the Fruit Market. From comedy to opera, there's something for everyone.



Photo credit: Hull Truck Theatre

LIVE ON STAGE

If live music is your jam, get yourself to a gig in Hull. The city attracts artists from all over the world – from intimate independent venues, to big stages such as [Bonus Arena](#), [MKM Stadium](#) and [Sewell Group Craven Park](#).

GET THAT FESTIVAL FEELING

Hull is a city that loves to celebrate, with festivals and events taking place throughout the year.



Photo credit:
Freedom Festival
- Tom Arran

- Celebrate Hull's history of freedom at the annual arts and culture [Freedom Festival](#), and world-class installations such as [The Awakening](#).



Photo credit: The Big Malarkey festival – Tom Arran

- If you enjoy live music, join the people of Hull at [Humber Street Sesh](#), an annual event that showcases local singers and bands.
- The [Big Malarkey](#) is Hull's children's literature festival held each summer, bringing together writers, illustrators, poets, performers, musicians and cartoonists, to inspire your little ones.

YOUR MOVE: To Hull, East Yorkshire
and Northern Lincolnshire



SHOP 'TIL YOU DROP

HEPWORTH ARCADE MR MARKS AND MR SPENCER OPENED ONE OF THEIR FIRST PENNY BAZAARS IN HULL'S GRADE II-LISTED HEPWORTH ARCADE

If you're in need of some retail therapy, Hull is home to an abundance of shops ranging from quirky independent retailers to mainstream shopping centres. It is the perfect place for a shopping spree.

Go independent

Hepworth Arcade, Paragon Arcade and Humber Street all have unique independent retailers. These places are home to Beasley's Clothing, Dinsdale's Joke Shop, Artisan Flowers, Mya Rose and Poorboy Boutique, to name but a few.



Photo credit: Allenby Commercial

MARKETS

Treat yourself to some market shopping and find unique gifts, essentials and amazing food.

- Trinity Market, Trinity House Lane
- Good Things (every quarter), Queen Street

GET YOUR RECORDS ON AND VISIT ONE OF HULL'S UNBELIEVABLE RECORD STORES

- FUNKYWORMHOLE
- SPIN-IT RECORD
- GO RECORDS

Be entertained

If you like a day out at a shopping centre, then you're in luck. St Stephen's and Princes Quay have a variety of stores, restaurants, and other entertainment facilities all in one place. Both centres have a large variety of retail outlets alongside a cinema, a bowling alley, soft play, a trampoline park and a fun station.

Hull is also home to retail parks, including Kingswood, Kingston, St Andrew's and The Mount.



Photo credit: Tom Arran



Balancing act

Escape the stresses of everyday life with unwinding activities to address the work-life balance – which is vital for physical and mental wellbeing. Find your happy place in Hull ...

Photo credit: Yoga @ Humber Street Gallery, Creative Hull, 2021. Courtesy of Absolutely Cultured © James Mulkeen

YOUR MOVE: To Hull, East Yorkshire and Northern Lincolnshire

PARK LIFE

Enjoy fresh air and green spaces in one of the city's parks. Here are our top picks...

- East Park
- Pearson Park
- Pickering Park
- West Park
- Peter Pan Park (at Costello Playing Fields)



DID YOU KNOW?

FOR THE **THIRD YEAR** RUNNING, HULL HAS BEEN RECOGNISED AS **A TREE CITY OF THE WORLD** – ONE OF **ONLY 19 CITIES IN THE UK AND 168 GLOBALLY**

.....

Take a sound bath

Want to master meditation? Or need a digital detox? 'Bathe' your mind and body in the symphony and soothing vibrations of crystal singing bowls and other instruments at a sound bath. Held at [Humber Street Gallery](#) on the last Saturday of every month.

Plant power

Surrounding yourself with plants can lift mood and create a calming environment. So why not get involved in a workshop at Hull's [Plant & Paint](#)? From crocheting hanging baskets, to creating a terrarium, get creative amongst the greenery.

A work of art

Focus your mind and let your creative juices flow at [The Feral Art School](#). Courses include drawing, painting, print, textiles and fashion.

Discover your sport

Getting involved in sport is a great way to become part of the community, and Hull has a fantastic sports scene. If you have a passion for watching or playing sport, or you'd like to try something new, you'll be spoilt for choice.



Photo credit: Hull City

PICK A TEAM

Hull boasts many sports teams that you can enjoy watching with friends or family.

- **Hull City AFC** – this Championship football team were involved in the first-ever penalty shootout in England in 1970
- **Hull City Ladies** – this growing women's football club was formed in 2001
- **Hull FC and Hull KR** – choose between these two Super League rugby teams and get ready for Derby day
- **Hull Seahawks** – experience the electric ice hockey atmosphere at Hull Arena



Photo credit: Hull KR

Spectator sports

Fancy watching some first-class sport on your doorstep? Hull regularly hosts touring championships, such as the **Snooker Tour Championship**, **World Seniors Darts Matchplay** and **Netball Super League fixtures**, which have taken place at the University of Hull's Allam Sports Centre.

Scaling new heights

If you're looking for something to get to grips with, why not try indoor rock climbing at **RockCity** or **Rock Up Hull**? It's fun for all the family too.



Fitness and fun

Grab your racquet and head to your local leisure centre for a game of badminton, tennis or squash. Fancy relaxing? Enjoy a swim followed by a sauna or steam. Hull leisure centres have something for everyone.

Tee time

Whether you're a seasoned golfer or a complete beginner, Hull has a range of golf facilities to choose from.

If you fancy 18 holes, head to **Springhead Park Golf Club** or **Sutton Park Golf Course**, or warm up and practice your swing at **One Stop** and **Country Golf** driving ranges.

Putt Club and **Lost City Adventure Golf** are crazy golf venues – perfect for a fun day out. Or, if you're looking for golf with a twist, combine your football and golf skills at **Footgolf Yorkshire**.

Whatever your age or experience, **Active Humber** can help you on your journey to be more active <https://activehumber.co.uk/>

Rollits ^{LLP}

YOUR KIND OF LAW FIRM

A **brighter** future from
the best of Yorkshire.

As a growing firm, we are always looking
for bright candidates to join our business.

Offices in Hull & York
Citadel House, 58 High Street, Hull HU1 1QE | 01482 323239 | rollits.com



CASE STUDY

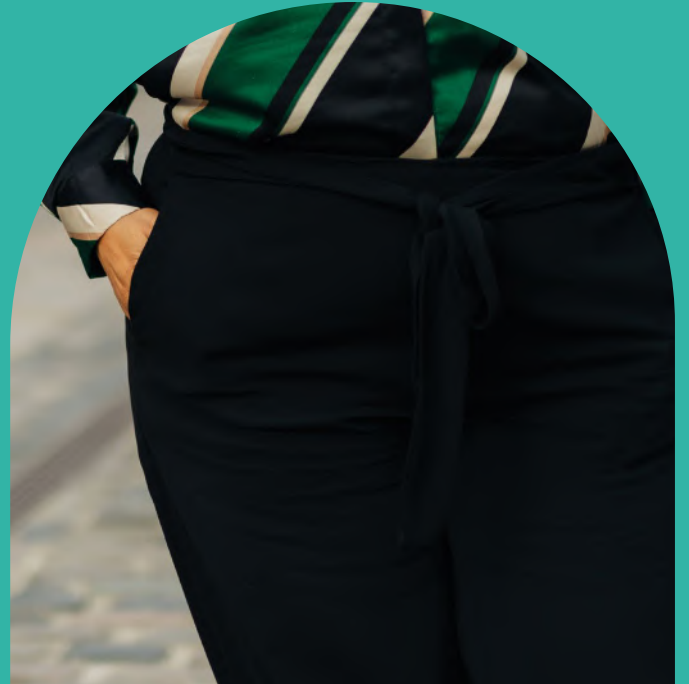
NAME: Lynette Leith

AGE: 40

ROLE: Vice Principal at Hull College, since 2021

MOVED FROM: Nottingham, having worked in London most of her career

NOW LIVES: East Yorkshire



WHAT ATTRACTED YOU TO THE AREA?

Though I knew Hull had been the City of Culture in 2017, I didn't realise it was so rich in arts and culture. I also found out about other things – like Hull's vibrant digital scene – and was attracted by the way the College could support the region's digital and green energy innovation. That felt like something I really wanted to be part of.



HOW HAVE YOU FOUND RELOCATING HERE?

At first I commuted from Nottingham, then began living here on weekdays, before realising how eager I was to get back to Hull on the weekend! Now, I find it wonderful living here permanently – it really feels like home.

WHAT DO YOU LIKE ABOUT THE HUMBER REGION?

Honestly, my favourite thing about the region is the people! They are absolutely lovely. I really can tell the difference when I visit somewhere like London – I come home and feel like Hull is safe and welcoming.



“
 Honestly, my favourite thing about the region is the people! They are absolutely lovely.”



WHAT ADVICE WOULD YOU GIVE TO OTHERS THINKING ABOUT RELOCATING HERE?

Come here and explore the region. Even in Hull, the different areas of the city have different qualities – like the city centre and the apartments around the Marina, to the west of the city with places like Anlaby and Hessle, to over on the east of the city with places such as Hedon. You should experience it in person, as there's something for everyone.

WHAT DO YOU THINK ATTRACTS PEOPLE TO THE REGION?

You can have a great city centre experience in Hull, but it's also close to other cities like Leeds and York – you can get to them easily on the train. It's also great for getting to the coast – and there's lots of opportunity for escaping from it all, right on your doorstep.

WHAT'S IT LIKE WORKING IN THE HUMBER REGION?

Working here is such an open and collaborative environment. Everyone's doors are open and people really want to support each other and work together. It's very unique.

LYNETTE ENJOYS...

- Dining at **Ambiente Tapas** on Hull's Humber Street
- Being able to head to the coast on lighter evenings
- Spending her free time travelling the world

East Yorkshire is an absolute gem – with green pastures and rolling hills, stunning coastal scenery and charming towns. Whether you like exploring the independent shops off market squares, taking windswept walks on the coast or enjoying the slow pace of village life, there's a home waiting for everyone.

Photo credit: Visit East Yorkshire

Find country and coast in East Yorkshire





TOWN:

“You might need a big city when you are young, but there comes a point when you need somewhere else. I’ve found it here.”

David Hockney, artist, on East Yorkshire

East Yorkshire is home to many towns, each with their own character. Cosmopolitan market towns Beverley and Pocklington have everything you need in a beautiful setting, while Goole has the charms of industrial heritage. Bridlington is a coastal town with sandy beaches and attractions aplenty, while Driffield and Market Weighton are surrounded by agricultural community.

Closer to the city of Hull and the A63, Brough and Hessle are bustling. Hessle has bags of charm and houses of all kinds – from traditional terraces to spacious new builds. Whilst riverside Brough is on the doorstep of stunning countryside with Elloughton, Welton and Brantingham Dales within walking distance, and has excellent rail links. Cottingham is widely touted as England’s biggest village, and has plenty to see and do – with shops, a weekly market and countryside a short walk away.

FANCY A NEW BUILD?

RISBY HOMES HAVE BEEN BUILDING AWARD-WINNING HOMES IN EAST YORKSHIRE SINCE 1993
<https://risbyhomes.co.uk/>

COUNTRY

Whether you’re looking for a spacious detached home, or a cosy cottage, there’s lots of choice across the East Yorkshire countryside. Swanland, Kirk Ella, North Cave and South Cave are pretty villages with beautiful homes and all the amenities you need. To the east of Hull you’ll find the unspoilt Holderness region. The Yorkshire Wolds is home to picturesque villages like Warter, Wetwang and Sledmere.

COAST

Bridlington and Hornsea were brought to life in the Victorian era as bathing resorts, and contain broad streets with townhouses and apartments with sea views, as well as more new build options in leafy suburbs. There are also many more delightful towns and villages up and down the coast, from Sewerby and Flamborough in the north, to Withernsea and Easington close to the natural haven of Spurn Point.

HOT PROPERTY:

The average house price in the East Riding of Yorkshire was **£210,868** in **2022**.

- Terraced average price of **£152,497**
- Semi-detached average of **£197,026**
- Detached properties fetching **£336,811**

*National average for a detached house is £365,357

BEST VIEWS TO ENJOY IN EAST YORKSHIRE

- The Humber Bridge
- The Wolds at Fordon
- Secret lake at Watton
- Flamborough’s impressive ‘Drinking Dinosaur’ rock formation (with seals swimming, if you’re lucky)

EXAMPLE EAST YORKSHIRE PROPERTY:

Nestled between Beverley’s bustling market town centre and the open pastures of the Westwood is this beautiful Victorian terraced property.



Photo credit:
Quick & Clarke

YOUR MOVE: To Hull, East Yorkshire and Northern Lincolnshire

A circular inset photograph shows two students in a science lab. On the left, a boy with brown hair and safety goggles is holding a lit Bunsen burner. On the right, a girl with dark hair and safety goggles is smiling. Both are wearing white lab coats over school uniforms. The background is a solid teal color.

Quality and choice for every family

We know that when relocating with your family finding the right nursery, school or college will be high on your list of priorities. East Yorkshire has many establishments to choose from, offering an excellent standard of education in inspiring environments.

Photo credit: Tranby



Photo credit: Hunsley Primary

EARLY YEARS

Help your little one get the best start in life by choosing one of East Yorkshire's nurturing and supportive pre-schools and nurseries.

BEST RATED DAY NURSERIES IN EAST YORKSHIRE*

- **Howden Pre-School**, Howden
- **Tickton Pre-School and Play Pals**, Tickton
- **Sunflowers Day Nursery**, Cottingham
- **Willerby & Kirk Ella Pre-School**, Kirk Ella
- **Brambley Cottage Day Nursery**, Hessle

Source: <https://snobe.co.uk/ofsted-outstanding-nurseries/east-riding-of-yorkshire> *Correct as of May 2023.



Photo credit: The Croft

SCHOOLS

An impressive 92% of East Yorkshire's schools have been assessed as Good or Outstanding by Ofsted – which is 8% above the latest regional average. In terms of performance, 17 primary schools and five secondary schools have Ofsted's 'Outstanding' rating in the region.



**CLICK FOR
FULL LIST OF
EAST YORKSHIRE'S
BEST SCHOOLS**

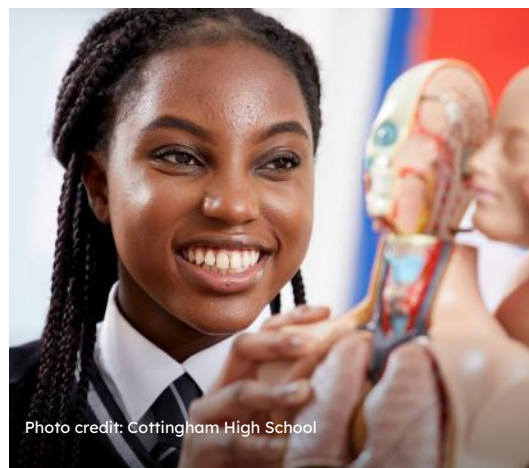


Photo credit: Cottingham High School

26.91% OF PUPILS IN THE EAST RIDING OF YORKSHIRE ACHIEVED **5 OR MORE GRADES** IN GCSES IN 2019 COMPARED WITH THE ENGLAND AVERAGE OF **25.69%**

143 primary schools



28 secondary schools

118 nurseries



5 alternative providers

YOUR MOVE: To Hull, East Yorkshire and Northern Lincolnshire

SPECIALIST-LED LEARNING

East Yorkshire is home to many colleges, with some providing technical and apprenticeship, A-Level and degree level training. This includes specialist agricultural college **Bishop Burton** and **East Riding College**, with campuses in Beverley and Bridlington. Meanwhile, many schools in the region offer sixth form provision, with quality learning in small classes.



Photo credit: Bishop Burton College

BISHOP BURTON COLLEGE
CELEBRATED A
100% T LEVEL PASS RATE
IN 2022 FOR EDUCATION
AND CHILDCARE

INDEPENDENT EDUCATION

Tranby is a co-educational day school for those aged 3-18. Situated just outside Anlaby amid the surroundings of the historically significant Tranby Croft, the school is committed to bringing out the best in everyone and has a 'no ceilings' approach.



Photo credit: Tranby

**SOME OF POCKLINGTON
SCHOOL'S NOTABLE ALUMNI
INCLUDES ANTI-SLAVERY
CAMPAIGNER WILLIAM
WILBERFORCE, ACTOR
ADRIAN EDMONDSON AND
PLAYWRIGHT TOM STOPPARD**



Photo credit: Pocklington School

Pocklington School, which is over 500 years old, provides co-ed boarding and day education from 2 to 18 years old, in an environment that values the process of learning through creativity and inspiration.

For earlier provision, **Hymers Hessle Mount** caters to pupils from pre-school to year two. Based in Hessle, the school provides a safe and nurturing environment for young children to embark on the first steps of their learning journey.

YOUR MOVE: To Hull, East Yorkshire
and Northern Lincolnshire



BE PART OF A CO-OWNED BUSINESS

**IF YOU WANT A CAREER THAT GIVES
YOU THE OPPORTUNITY TO GROW,
YOU'RE IN THE RIGHT PLACE.**

As an employee owned business we have a huge focus on our people, making sure they're cared for, talented and unleashed - after all, without our team we'd be pretty lost.



With opportunities across a group of businesses, from **construction** to **consultancy**, **facilities management** and **tech**, you're bound to find something that catches your eye.

Interested? We're always on the look out for new talent, visit:
sewell-group.co.uk/careers



SHAREDAGENDA



parallel





CASE STUDY

NAME: Rodrigo Figueroa

AGE: 35

ROLE: Head of Supply Chain Logistics
at Siemens Gamesa

MOVED FROM: Mexico City
- seven months ago

NOW LIVES: Beverley



WHAT DO YOU LIKE ABOUT BEVERLEY?

Beverley is a beautiful place with very welcoming people. The streets and buildings, especially Beverley Minster, remind me of an old European City, and there are great places to eat like Central 42 which serves fresh authentic tapas, and traditional pubs, like The Green Dragon. There are lots of green areas and lovely walks – I particularly like Beverley Westwood. The town is also close to other cities and the coast, meaning I get the chance to explore England.



WHAT DAY TRIPS HAVE YOU ENJOYED?

One of the things I love about living in Beverley is that two hours in any direction takes me to another lovely city or town. I've visited Newcastle, Liverpool and Edinburgh, and since my wife moved over, we've had trips to York, Lincoln, Whitby and Robin Hood's Bay, which we've loved.

IN HIS SPARE TIME, RODRIGO LIKES TO...

- Walk his dog on Beverley Westwood
- Workout at his local gym
- Explore cities and towns in England

“

Siemens Gamesa supported me through the process which was a huge help, and I was impressed with how welcoming everyone was.

”



WHAT IS IT LIKE WORKING IN RENEWABLE ENERGY IN THIS REGION?

I really enjoy working at Siemens Gamesa, and it's a job that I'm very proud of, as helping the environment is something I'm passionate about. It's a great place to work. They helped me with my relocation and sent my wife flowers and chocolates when she arrived six months later, which was very kind.

HOW DID YOU FIND RELOCATING?

There were a few challenges along the way due to immigration rules in place, but Siemens Gamesa supported me through the process which was a huge help, and I was impressed with how welcoming everyone was. My wife and I, and our dog and cat, are now settled and happy. We have a lovely house and look forward to exploring even more of the region.

RODRIGO'S TIPS FOR RELOCATING FROM ABROAD ARE...

- Be mindful, it takes time
- Pack the right clothes!
- Get the right support
- Bring your pets



Experience fresh flavours in stunning locations when dining in East Yorkshire.

A feast for foodies

Photo credit: Roku Asia

DINE IN STYLE



The region caters to fine dining. Michelin star restaurant the **Pipe and Glass** is situated a short drive from Beverley in South Dalton. In Beverley itself you'll find two fantastic Michelin guide restaurants – **The Westwood** and **Whites Restaurant**. Visit **Roku Asia** in Beverley for Pan Asian-inspired fine dining – sample small plates, sushi and spectacular cocktails.

MEET THE COWS

WHO MAKE THE MILK FOR THE AWARD-WINNING ICE-CREAM AT MR MOO'S CAFÉ (AND FARM!) IN SKIPSEA, NEAR HORNSEA



AFTERNOON TEA AND MORE



The East Yorkshire countryside is the perfect setting for farm shops and tearooms. If you're walking in the beautiful Wolds, **The Rambler's Rest** in Millington is a great choice. **Kitchen** in Howden and Snaith serves up delicious baked goods and homemade meals. In South Cave, **Drewtons** has a farm shop complete with deli, and a menu packed with locally-sourced ingredients.

YOUR MOVE: To Hull, East Yorkshire and Northern Lincolnshire

DID YOU KNOW?

BEVERLEY'S
THE WHITE HORSE INN
ALSO KNOWN AS 'NELLIES' WAS NAMED
AS **ONE OF THE NINE COSIEST PUBS**
IN THE UK IN 2021 BY FOOD CRITIC TOM
PARKER BOWLES AND ONE OF BRITAIN'S
GREATEST, FEATURING IN THE 'GREAT
PUBS OF ENGLAND' IN 2022

WE DO LIKE TO BE BESIDE THE SEASIDE

The East Yorkshire coast is famed for its stunning scenery and well known for its fishing heritage. In Bridlington, **Southside Restaurant** is a great spot for fresh seafood. If you're after fish and chips, visit **Whiteheads** in Hornsea, which was named UK Fish and Chip Shop of The Year at the National Fish And Chip Awards 2023. In Flamborough, **Lighthouse Fisheries** won UK Best Newcomer at the same awards.

Photo credit: Visit East Yorkshire



BEST DOG FRIENDLY PUBS:

- The Woolpack, Beverley
- Wellington Hotel, Howden
- The Marine Hotel, Hornsea
- The Plough Inn, Hollym
- The Wheatsheaf, Kirk Ella
- The Ship Inn, Sewerby



Delivering powerful outcomes, through knowledge driven recruitment partnerships.

- ✦ Partnering with leading Humber wide organisations for over a decade.
- ✦ Trusted to deliver talent acquisition projects.
- ✦ Sector specialist with an in depth understanding of the regional talent.
- ✦ Invested in you, helping build teams and careers.

Specialising in Executive Search, Engineering & Operations, Sales & Marketing and Finance & Business Support.

With over 66% of business coming via recommendations, isn't it time you decided to partner with Emmerson Kitney?



www.emmersonkitney.co.uk



01482 628808



From pristine beaches
to rolling pastures and
bustling market towns,
there's a lot to explore
across the county.

Explore everything East Yorkshire has to offer



CULTURE FIX



Photo credit: East Riding Theatre

Check out the latest music, comedy and theatre at the renovated **Bridlington Spa**, or take in some indie theatre at **Junction Goole** or **East Riding Theatre** in Beverley. Beverley's **Treasure House** has a calendar of exhibitions, while the town also plays host to an annual puppet festival.



SHOP
DESIGNER

Market towns Beverley, Pocklington and Driffield are full of independent shops, and there are also outdoor markets taking place weekly like the **Beverley Saturday Market** and **Cottingham Thursday Market**.

Beverley is home to an array of brands, such as **The White Company**, **Sweaty Betty**, **Barbour**, **Space NK**, **Jo Malone** and **Browns** department store.

If it's antiques that you're after, Bridlington and Beverley are great destinations.

FAMILY FUN

Outdoor adventure play area **William's Den**, in North Cave, is perfect for energetic small ones and has the biggest inflatable assault course in the North. **Honeysuckle Farm** near Hornsea is open for animal adventures on weekends from March to September. If water play is more your idea of fun, **Bridlington Splash Zone** offers fun for all the family indoors.

EXPERIENCE EAST YORKSHIRE

Photo credit:
Burton Constable Hall



THREE PERFECT DAYS OUT:

- **Driffield Show**
- **Pocklington Food and Drink Festival**
- **Beverley Races** - including Ladies Day held every August

The region is home to some beautiful scenery – from the natural haven of **Spurn Point**, to a lively day out in **Bridlington**. Why not visit one of the region's many stately homes? Check out the impressive **Sledmere House** or **Sewerby Hall**, complete with a zoo, or head to **Burton Constable Hall** – which also hosts the Great British Food Festival.

DID YOU KNOW?

- EAST YORKSHIRE IS HOME TO ENGLAND'S OLDEST HORSE RACE - THE KIPLINGCOTES DERBY
- BARMSTON BEACH NEAR BRIDLINGTON HAS BEEN NAMED ONE OF THE MOST SCENIC DOG-WALKING SPOTS IN THE COUNTRY BY EXPERTS AT YEARS.COM

CHECK THESE OFF YOUR EAST YORKSHIRE BUCKET LIST!

- Walk the Wolds Way
- Spot a Puffin at RSPB Bempton Cliffs
- Discover a David Hockney site
- Take the Beverley Minster rooftop tour
- Learn to cook like a chef at the Yorkshire Wolds Cookery School

YOUR MOVE: To Hull, East Yorkshire and Northern Lincolnshire

With beautiful coast and countryside, tranquil retreats and a whole host of activities that are great for the mind, body and soul, East Yorkshire is the perfect place for wellbeing. Add to that short commute times and affordable living, and achieving a stress-free work-life balance is easy.

Rest, refocus and relax



YOUR MOVE: To Hull, East Yorkshire
and Northern Lincolnshire

Photo credit: Visit East Yorkshire



ANIMAL THERAPY

Take in stunning scenery on a walk with a furry friend. Alpaca trekking at **Ings Park Alpacas** in North Cave provides the ideal escape from the hustle and bustle, and makes a fantastic day out for families too.



Photo credit: Bloom & Gray

GET CRAFTY

Refocus and reset your mind by letting your creative juices flow.

- **Tea & Bisque-It**, Willerby
- **Crafternoon Tea & Bisque-It**, Beverley
- **Pot-A-Doodle Doo**, Bridlington
- **Coffee Cake Create**, Market Weighton
- **Bloom & Gray flower workshops**, Burstwick



OPEN YOUR MIND

Open water swimming is great for improved sleep, physical health and mood. Dive in and refresh your mind

THE SPECTACULAR
21-MILE STRETCH OF

KING CHARLES III ENGLAND COAST PATH

OPENED BETWEEN BRIDLINGTON AND
FILEY BRIGG IN 2023 AND TAKES IN
STUNNING SCENERY, SMUGGLERS' COVES
AND SEABIRD COLONY

TIME TO UNWIND

Step away from day-to-day stresses and strains, and take some time out for you. Here are some of our favourite sanctuaries to escape to.

Madhyamaka Kadampa Meditation Centre, Pocklington

Offering a mix of meditation and modern Buddhism, this is the perfect place to create a calm and peaceful mind.

Sessions Spa, Beverley

Indulge in luxurious and rejuvenating spa treatments in this stunning, historic Grade II-listed former courthouse.

The Yoga Barn, South Cave

This tranquil yoga studio is home to aerial and mat-based yoga classes, as well as day retreats and sound baths.

Akasha Wellbeing Spa, Welton

Restore wellbeing through massage, ayurvedic and beauty therapies, as well as yoga, meditation and mindfulness classes.

Salt Revive, Beverley

Reduce stress and boost your immune system with salt therapy – a natural treatment to help you slow down, relax and revive.



East Yorkshire is a haven for sports enthusiasts, offering many ways to get active. From state-of-the-art gyms, to coastal walks and watersports, there are plenty of sports and activities to explore.

Getting active in East Yorkshire



SWEAT IT OUT

Whether you're a gym enthusiast or just starting out, East Yorkshire offers a range of modern gyms you can join. **TC60** in Hessle is a quirky, New York-style gym that will get you motivated to work out with regular fitness classes. There's also **Total Fitness** in Willerby, offering a range of equipment alongside a pool, sauna and steam room.

WET AND WILD

For a fun day out with friends or family, visit **Allerthorpe Lakeland Park**, near Pocklington. Here you can enjoy pedalos, kayaks, canoes or the inflatable Aqua Park, with a café serving food for lunch.

VISIT THE BEACH

- HORNSEA
- BRIDLINGTON
- FRAISTHORPE



DID YOU KNOW?

THERE ARE 18 STUNNING GOLF COURSES TO CHOOSE FROM ACROSS EAST YORKSHIRE

ON YOUR BIKE



Here are three cycle routes to explore ...

- Yorkshire Wolds Cycle Route
- Way of the Roses
- The Trans Pennine Trail (TPT)

JOIN A CLUB

East Yorkshire boasts a welcoming community of players and sporting clubs for all ability levels. From football, rugby and cricket, to sailing, bowls and tennis, there's a club for everyone.

PLACE YOUR BETS

If spectator sport is more your thing, get yourself down to **Beverley Racecourse**, set in the stunning Beverley Westwood. With races held between April and September every year, you can make it a boozy day out with friends, or take a picnic and enjoy with family.

A SPOT OF POLO

The region is also home to some prestigious polo clubs, with the **Beverley Polo Club** just outside the town in the village of Tickton, and the **White Rose Polo Club** at North Cliffe, perfect for equestrian lessons or watching a match.

YOUR MOVE: To Hull, East Yorkshire and Northern Lincolnshire



Home to beautiful countryside and coastline, market towns, beachside resorts and quaint villages, living in this part of the world is a real escape.

Not only this, but homes in this part of the world are a fraction of the UK average home price – leaving you with lots more income to do the things you love.

North East Lincolnshire: The great escape

BEACHCOMBING



The charming resort of Cleethorpes offers all the attractions of a seaside town with the tranquillity of the countryside nearby, including the Humberston Fitties, great for nature lovers. All kinds of homes are here – from Victorian townhouses to suburban new builds.

Photo credit:
Yopa Estate Agents



EXAMPLE NORTH EAST LINCOLNSHIRE PROPERTY:

Situated in the popular village of Tetney, this fantastic four-bedroom bungalow boasts a high spec and a large plot, making it a perfect family home.

A SLOWER PACE OF LIFE

The region is also home to the villages of New Waltham, Waltham and Laceby – with beautiful homes in peaceful locations on the edge of the Lincolnshire Wolds – an Area Of Outstanding Natural Beauty (AONB).



HOT PROPERTY:

Properties in North East Lincolnshire had an overall average price of **£170,291** in **2023**.

- Terraced average price of **£107,445**
- Semi-detached average of **£175,230**
- Detached properties fetching **£284,583**

*National average for a detached house is £365,357

CHARACTER AND HERITAGE

If you prefer somewhere more bustling, Grimsby is a famous seafaring town, with bags of history and heritage, and lots to see and do. A short drive from North East Lincolnshire is Caistor, with its quaint marketplace. Fringed by quirky independent shops and cafés, it is one of three Lincolnshire Wolds 'Walkers are Welcome' towns, as it lies on the Viking Way.



FIVE PLACES TO EXPLORE ON A WEEKEND:

- Humberston Fitties Beach
- Weelsby Woods
- Pilgrims Heritage Trail
- Donna Nook
- Waltham Windmill

YOUR MOVE: To Hull, East Yorkshire and Northern Lincolnshire



CASE STUDY

NAME: Nick Browning

AGE: 36

ROLE: Head of Culture, Heritage, Leisure & Tourism at North East Lincolnshire Council

MOVED FROM: Leicester, having worked in London and the Midlands since graduating from the University of Exeter

NOW LIVES: Cleethorpes



WHAT DO YOU LOVE ABOUT WHERE YOU LIVE?

We love being close to the coast and being outdoors. The south beach of Cleethorpes is a lovely, natural place – it's unspoilt, and is great for cycling and taking the kids out. We love being close to the beach and enjoy the lovely sunrises you get while out running first thing.

WHAT DO YOU THINK ATTRACTS PEOPLE TO THE REGION?

It's true that the coast and countryside are very attractive – with the Wolds on your doorstep. It's a really great place to live. But also with the cost of living – the property prices here compared to elsewhere in the country are very generous. We now live close to the beach and our quality of living has certainly improved, with less time commuting and more time with family.

WHAT DOES NORTH EAST LINCOLNSHIRE HAVE TO OFFER IN TERMS OF LEISURE?

The big pull of North East Lincolnshire is the natural environment, but there's lots more. There's the Victorian heritage of Cleethorpes, with the pier (home to [Papas Fish & Chips](#)) and great beach days out, as well as wildlife, such as the seals at Donna Nook, and Sites of Special Scientific Interest (SSSI). Then there's Grimsby with its fantastic fishing heritage – as well as the renewables development that's going on there.



It's also a great base from which to explore both East Yorkshire to the north and Lincolnshire to the south – it's easy to get out and see beautiful countryside and beaches.

WHAT ADVICE WOULD YOU GIVE TO PEOPLE RELOCATING WITH THEIR FAMILIES?

We found one way to help our children make friends was through sports clubs. They have school, but they also have made friends through sport, and we've met other parents and have formed connections that way. It's great for keeping healthy too!



NICK'S TOP LEISURE TIPS:

- Go and see the seals at Donna Nook
- Humberston Fitties beach is a great area to explore
- Stand up paddleboarding at Cleethorpes Beach



“Relocating is a big decision – but be brave and go for it!”

North East Lincolnshire provides a multitude of options when it comes to education providers. It is home to a wide range of educational institutions that foster an inclusive and nurturing environment, while also delivering inspirational teaching.

A circular inset photograph shows a young girl with blonde hair, wearing a white short-sleeved shirt and dark grey overalls, pointing her right index finger towards a tree branch with green leaves. The background is a wooden fence and more foliage. The text 'Educating tomorrow's brightest minds' is overlaid on the right side of the circle in white.

Educating tomorrow's brightest minds

YOUR MOVE: To Hull, East Yorkshire
and Northern Lincolnshire

Photo credit: Grant Thorold Forest School

EARLY YEARS

Early years education is such an important step for your little one. Help them grow by choosing one of North East Lincolnshire's excellent nurseries or pre-schools.



Photo credit: Humberston Pre-School

BEST RATED DAY NURSERIES IN NORTH EAST LINCOLNSHIRE*

- **Immingham Day Nursery**, Immingham
- **Little Blossoms Day Nursery**, Grimsby
- **Cleethorpes Children's Centre – Reynolds**, Cleethorpes
- **The Children's House**, Stallingborough
- **Grant Thorold Forest School**, Grimsby

Source: <https://snobe.co.uk/nurseries-preschools/north-east-lincolnshire> *Correct as of May 2023.

SCHOOLS

An impressive 90% of North East Lincolnshire's schools have been assessed as Good or Outstanding by Ofsted – which is 8% above the latest national average. Further afield are two exceptional schools to consider – **Caistor Grammar** in Caistor and **King Edward School** in Louth.

96%
OF NORTH EAST LINCOLNSHIRE
PRIMARY SCHOOLS ASSESSED AS
**GOOD OR
OUTSTANDING**
BY OFSTED
WHICH IS 8% ABOVE THE LATEST
NATIONAL AVERAGE

CLICK FOR
FULL LIST
OF NORTH EAST
LINCOLNSHIRE
SCHOOL RATINGS
HERE:



Independent education

There are two independent schools in Grimsby, **St James' School** for 11-18-year-olds, which is co-ed and has both day and boarding pupils. St James' is a small school, home to just 65 pupils, with small classes and a community feel. There is also **St Martin's Preparatory School**, a co-ed day preparatory and nursery school.

In Stallingborough, there is the co-ed day preparatory school **The Children's House**, for those aged 4-11.



St Martin's Preparatory School was named as the Sunday Times' third Best Primary School in the UK in 2021

COLLEGES

Grimsby Institute has a huge choice of further and higher education courses. Its Nuns Corner campus is home to a state-of-the-art Engineering and Renewable Energy Centre, Sports Centre and School of Art – as well as the £20m University Centre Grimsby.

For industry training, **CATCH** in Stallingborough has a £12m world-class facility serving the region's process, energy, engineering and renewable sectors. There's also **Modal Training Centre** in Immingham, a centre of excellence for maritime, logistics and safety training.

49 primary schools

7 special schools

18 secondary schools

3 alternative providers

YOUR MOVE: To Hull, East Yorkshire and Northern Lincolnshire



Delicious fayre from land and sea

North East Lincolnshire is famous for its fishing heritage, with Grimsby still at the centre of seafood production in Northern Europe, but you can find far more than just fish and chip shops here. Whether you fancy an afternoon tea, a restaurant for a special occasion or a delightful café for a light bite, there are options aplenty in North East Lincolnshire!

..... SPOILT FOR CHOICE



For tea and cake, **Lily's Tea Rooms** in Keelby is worth a visit, as is the **Landmark Café** in the Wolds. If a great food menu is more your cup of tea, **The Pig & Whistle Pub** at Healing Manor Hotel in Stallingborough, is a great option. In Grimsby you'll find many delightful restaurants – including **Sage** – a rustic bistro serving European inspired dishes. For a cosy country pub, head to **The Blacksmith's Arms** in Rothwell, which serves locally-sourced, fresh homemade food and real ales.



Photo credit: Healing Manor Hotel

If pizza is more your thing, why not try **Tredici Wood Fired Pizzeria & Bakery** in Grimsby? In Cleethorpes, you'll find lots of great spots to try, with **The Globe**, **The Tale of Two** and **The Counting House** highly recommended by locals. Fresh sushi and premium cocktails take your fancy? Check out **Annie's Lounge**, a new arrival on Cleethorpes' dining scene.

Louth, known as the 'Capital of the Wolds', is hailed by TV chefs The Hairy Bikers as a "foodie mecca"



Photo credit: Docks Beers

Grimsby's **Docks Beers** is a cool craft beer destination in a historic location, as is **Message in a Bottle** – a quaint bar in Cleethorpes.

..... FIVE PLACES TO TRY A FISH AND CHIP SUPPER:

- **Papa's**, Cleethorpes Pier
- **Fairfield Fish Bar**, Scartho
- **Wybers Chippy**, Grimsby
- **Ocean Fish Bar**, Cleethorpes
- **Steels Cornerhouse Restaurant**, Cleethorpes

Steels is "a national treasure"
Chris Haslam, The Times (July 2022)

YOUR MOVE: To Hull, East Yorkshire and Northern Lincolnshire

The great outdoors and more

North East Lincolnshire is home to rolling hills and sandy beaches, beautiful sunrises and sunsets, and plenty of nature and wildlife. It's a hidden gem, and is filled with lots to see and do.



GO OUTSIDE



Photo credit: Having fun at a Culture House event in Grimsby.
Photo Paul J Cunningham

In this part of the world you'll find sun, sea and sand, as well as lush forests to walk your dog or take your family. Getting away from it all is easy too, with the heart of the picturesque Lincolnshire Wolds just a short drive away. North East Lincolnshire is a haven for wildlife, from marine life like seals, to rare birds and mammals.



Photo credit: Having fun at a Culture House event in Grimsby.
Photo Paul J Cunningham

GET CULTURED

Grimsby's The Culture House produces events, festivals and creative projects that enhance the town's cultural offer. Projects have included **Our Future Starts Here**, **Museum of the Moon** and **Festival of the Sea**.

STEP BACK IN TIME

The area has a rich past, with the Grimsby Fishing Heritage Centre showcasing the history of industry in the town, while the Immingham Museum explores emigration and those who travelled on the Mayflower ship.

RETAIL THERAPY

In Grimsby you'll find High Street brands in **Freshney Place Shopping Centre** and bargains at the **Freeman Street Market**. Independent retailers can be found in the heart of the town in **Abbeygate**, including boutique fashion for men and women. Over in Cleethorpes there are traditional shops and independent boutiques aplenty, especially in **Sea View Quarter**, including artisan food store **Thomas Greens** and award-winning headwear boutique **Hats & Tiaras**.



THE FUN DOESN'T STOP

If culture is your thing, Grimsby is home to two theatres, the **Grimsby Auditorium** and **The Caxton Theatre**, while there is family fun to be had at **Meridian Point** in Cleethorpes. Cleethorpes is also great for a night out – with many pubs and bars open until the early hours.

DID YOU KNOW?

THE GRIMSBY DOCK TOWER WAS MADE USING **ONE MILLION BRICKS**



YOUR MOVE: To Hull, East Yorkshire and Northern Lincolnshire

North East Lincolnshire is home to lots of green space, big skies and fresh air. It's the perfect location for taking some 'you' time or enjoying some family activities.

Take time to breathe in the sea air





DID YOU KNOW?

THERE ARE OVER
50 PARKS
AND OPEN SPACES TO ENJOY
IN NORTH EAST LINCOLNSHIRE

LUXURY PAMPERING

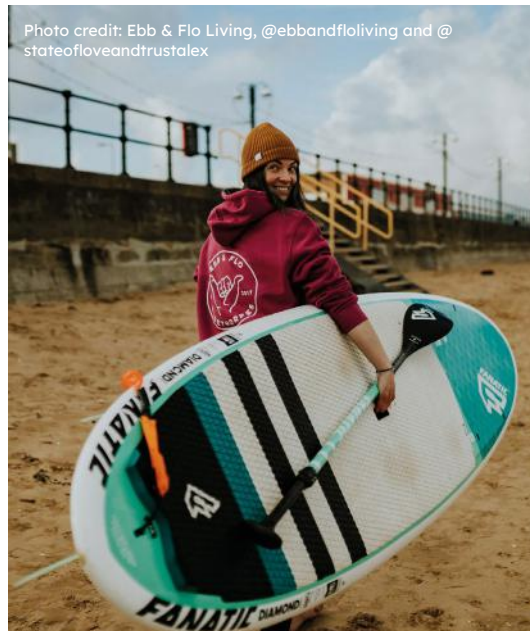
North East Lincolnshire is home to the award-winning spa at **Laceby Manor**, and there are lots more to try nearby, including the **Bannatyne Health Club** and the **Delush Spa** in Cleethorpes, so there's no reason not to feel relaxed.



RAISE YOUR HEART RATE

If getting energetic is more your cup of tea, there are lots of sports facilities across the region to get your heart rate up. The **Lincolnshire Wolds** are great for walking and cycling, with bikes available to hire from the **Cycle Hub** in Grimsby and Cleethorpes. There are also many parks to take a walk or jog in, and playgrounds are aplenty across the region.

Photo credit: Ebb & Flo Living, @ebbandfloiving and @stateofloveandtrustalex



There's a plethora of watersports available across the region – from outdoor swimming, to kayaking and stand-up paddleboarding. **Ebb and Flo** in Cleethorpes offers paddleboarding and equipment hire, with experiences available at Grimsby's Alexandra Dock and Cleethorpes Beach.

FIVE TO TRY:

- The Grimsby Revolution Cycle Route
- Walk the Wanderlust Way
- Stand-up paddleboarding at Cleethorpes Beach
- Have a jog at the People's Park
- Head to the Stretch Zone Mind Gym

YOUR MOVE: To Hull, East Yorkshire and Northern Lincolnshire



CASE STUDY

NAME: Mark Wade

AGE: 38

ROLE: Human Resources Manager at Phillips 66

MOVED FROM: Though Mark grew up in Immingham, he has had many roles in HR at different locations across the world, from Wales to Montana in the United States. He moved back to the region in 2019

NOW LIVES: Humberston

WHAT BROUGHT YOU BACK TO THE HUMBER REGION?

Though I moved back for work, it was also for our family and how much the region has to offer us. It's only 10 minutes to a beautiful beach, only 10 minutes to the country, and you have four or five different cities on your doorstep – like Lincoln and Leeds.

WHAT ATTRACTED YOU TO NORTH EAST LINCOLNSHIRE?

After living in the US, where there is a lot of outdoor space and the houses are very spacious, we knew we wanted to live somewhere with enough room for our family and a garden. What you can get in the region is very generous for the money.

There's also a lot of opportunity to progress your career in the region, with so many different industries based here. I've always been grateful for the opportunities I've had. The work-life balance you have here is also really good.

WHAT ADVICE DO YOU HAVE FOR PEOPLE RELOCATING TO THE AREA?

North East Lincolnshire is a fantastic place for people who love the great outdoors. If being active and outside is something you value, you have that here! There are so many places to explore – from woods and fields to walk your dog, to beaches and cities. For us, there's nowhere like it in the country for the blend of city, coast and country – if you don't mind a short drive, there's a lot to explore.

“ I love how friendly the people are – if you said hello to someone in London they'd think you were strange – here they'd probably strike up a conversation and want to stop and chat! ”

MARK'S TIPS FOR ENJOYING THE REGION:

- Steels Cornerhouse in Cleethorpes has the best fish and chips, but you should also try out The Funny Onion restaurant
- Humberston Fitties is our favourite beach
- The Deep in Hull is a family favourite day out, but we also enjoy the Pink Pig Farm, Scunthorpe, and William's Den in North Cave, East Yorkshire

MAKE THE BEST MOVE OF YOUR LIFE... ...WITH **BEAL**

Check out just how much more is included in a Beal Home throughout East Yorkshire and North Lincolnshire

Find out about our bespoke design service.

Let us build the home of your dreams - designed and personalised by you!

Why not visit our state-of-the-art Design Lounge which is open daily or...



Scan to watch a video of our new customer Design Lounge!

Or call us on **01482 977 776**

Choose from a wide range of 1, 2, 3, 4 & 5 bedroom homes in stunning locations

East Yorkshire

1. The Greenways, Goole
2. St. Mary's View, Beverley
3. Turpins Chase, Welton
4. Pilgrim's Walk, Hessle
5. West Hill II, Kirk Ella
6. Fruit Market, Hull
7. Holderness Chase, Preston
8. Kings Fold, Kingswood, Hull

North Lincolnshire

9. Bishops Green, Welton
10. Thonock Vale, Gainsborough



STOP PRESS: COMING SOON TO NORTH FERRIBY AND IMMINGHAM



A typical Beal street scene – West Hill II

BEAL HOMES

Designed by you



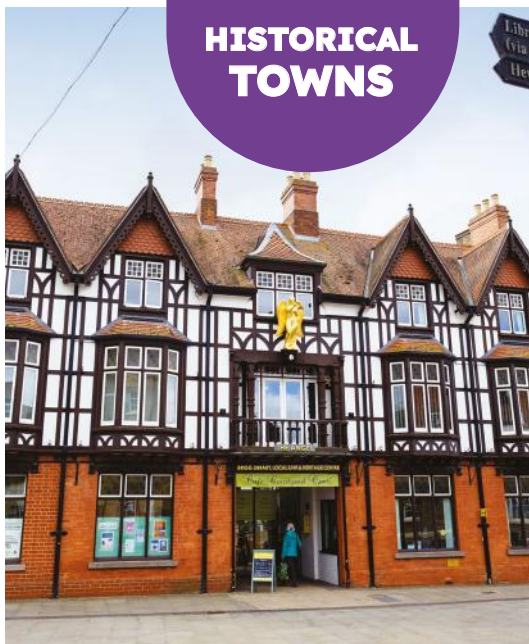


Discover the charm of North Lincolnshire living

North Lincolnshire is known for its beautiful countryside, charming market towns and rich history. In this region, you can enjoy strolls along the riverside, woodland or gardens, right on your doorstep.

This beautiful environment offers lower than average house prices, ranging from cosy cottages to modern new builds, making it a place that offers a high quality of life at a lower cost of living.

HISTORICAL TOWNS



North Lincolnshire is home to many small towns with a rich history. The market town of Brigg dates back to the 12th century, with Epworth, known as 'the Home of Methodism', being home to an 18th century church. Buildings and houses here are full of character.

HUSTLE AND BUSTLE

If you prefer living somewhere livelier, Scunthorpe is the place for you. This busy urban centre is home to people with many different cultural backgrounds – and lots of beautiful homes.

RIVERSIDE LIVING

For stunning views across the River Humber, head to Barton-upon-Humber, Winteringham or South Ferriby. On sunny days, or at dawn and sunset, you are guaranteed beautiful scenery. Stroll along the riverbanks or enjoy walks around the local nature reserves.



VILLAGES WITH CHARACTER

Situated on the River Ancholme, the village of Appleby boasts some of the prettiest homes in North Lincolnshire. This quintessential English village includes traditional red-brick estate houses and beautiful thatched cottages.

HOT PROPERTY:

Properties in North Lincolnshire had an overall average price of **£197,106** in **2023**.

- **Terraced average price of £126,666**
- **Semi-detached average of £155,002**
- **Detached properties fetching £296,881**

*National average for a detached house is £365,357

EXAMPLE NORTH LINCOLNSHIRE PROPERTY:

This modern barn-style four-bedroom property is located in the quiet village of Belton, not far from Scunthorpe and all it has to offer.



Photo credit:
E A Ben Cade



CASE STUDY

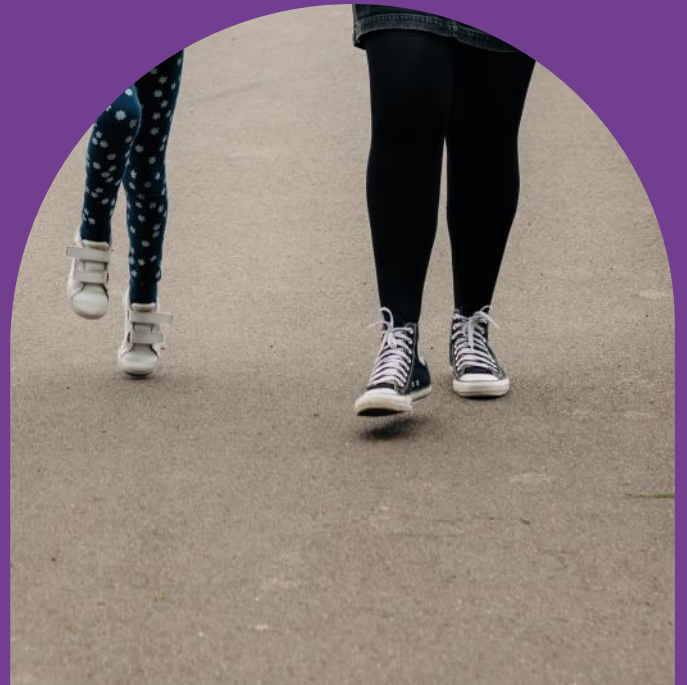
NAME: Andy Nalliah

AGE: 38

ROLE: Partner at RSM, a provider of audit, tax and consulting services. Andy heads up the national court work team specialising in compulsory liquidations and bankruptcies

MOVED FROM: Peterborough

NOW LIVES: Barton-upon-Humber



WHAT DO YOU LIKE ABOUT BARTON-UPON-HUMBER?

It's a beautiful place with countryside and riverside walks on your doorstep alongside great pubs and cafés. The community feel is fantastic and exactly what we'd hoped for; this makes us feel at home.



WHAT IS FAMILY LIFE LIKE IN BARTON-UPON-HUMBER?

It's great living here with my young family. We love the craft classes at Waters' Edge Visitor Centre, and Barton Inclusive Football Club's junior football sessions on Saturday mornings. My daughter and young son attend as it has groups for girls and 2-6-year-olds; this is held outdoors at Baysgarth School. It's also great being able to teach my children how to ride their bikes in the countryside, where we have long scenic rides planned for the future. We love to explore and visit new places and regularly find ourselves travelling an hour or so, in any direction, which takes us to new and exciting places, be it coastal or country. There is so much to see and do close by.

WHAT IS IT LIKE WORKING IN THIS AREA?

My office is based at Hull Marina and the view is amazing! This means I don't get lost in the corporate world of skyscrapers, which can happen in big cities, because I'm surrounded by water and with views across the Humber Estuary.



“ Locally there is a strong community feel, everyday contributions matter and there is a real sense of camaraderie and connectedness. This has made us feel so at home. **”**



WHAT IS THE COMMUNITY LIKE IN BARTON-UPON-HUMBER?

The community feel is one of my favourite things about living here. The people are so friendly and there is always something going on. There was an organised walk in the park for the Queen's Jubilee, and recently a bingo evening at school. There are annual events such as Bike Night and the Beer Fest and it's great to attend these. My family and I volunteered to help the Barton Baggers, a litter picking group, and given my daughter's enthusiasm, they brought her round a present which we thought was lovely! All these little things really make you feel part of the community.

WHAT ADVICE WOULD YOU GIVE TO OTHERS THINKING ABOUT RELOCATING TO THE HUMBER REGION?

Go for it! There is never the perfect time to do something and it's better to regret the things you did rather than the things you didn't. Moving here has been so enjoyable and, most importantly, my family and I are happy and settled here.

ANDY AND HIS FAMILY ENJOY...

- Watching Hull City Ladies at The Easy Buy Stadium, in Barton-upon-Humber
- Volunteering with the Barton Baggers, helping to keep the town clean and tidy
- Visiting the nearby Humber Bridge Country Park for peaceful walks along the Viking Way

Choosing the right school for your children is a significant decision. North Lincolnshire offers a range of institutions with high reputations, ranging from charming nurseries to a University Campus, all ready to help your children achieve their full potential.



Talented minds in North Lincolnshire

Photo credit: North Lindsey College

NURSERY

North Lincolnshire has an abundance of daycare centres for children that prioritise excellent care. Top nurseries include **Apple Tree Day Nursery** in Hibaldstow, **Little Owls** in Scunthorpe and **Little Acorns Pre-School** in Broughton.

Source: <https://snobe.co.uk/nurseries-preschools/north-lincolnshire> *Correct as of May 2023.

SCHOOLS

There are 53 primary schools and 13 secondary schools in North Lincolnshire. 32% of pupils that attend a North Lincolnshire school achieve a grade 5 or above in English and Maths GCSE, which is higher than England's average of 25%. (Data from 2019).



THERE ARE **88 SCHOOLS**
AND **COLLEGES** IN
NORTH LINCOLNSHIRE

TOP RANKED PRIMARY AND SECONDARY SCHOOLS

Top ranked primary schools

- **Scunthorpe CofE Primary School**
- **Crosby Primary School**, Scunthorpe
- **St Bernadette's Catholic Primary**, Scunthorpe

Top ranked secondary

- **Frederick Gough School**, Scunthorpe
- **St Hugh's School**, Scunthorpe
- **The Vale Academy**, Brigg



**CLICK TO FIND
THE BEST SCHOOLS
IN NORTH
LINCOLNSHIRE**



Photo credit: North Lindsey College

FURTHER EDUCATION

John Leggott College and **North Lindsey College** in Scunthorpe both offer post-16 education as well as adult courses.

.....

**THE PASS RATE FOR
A LEVEL STUDENTS AT
JOHN LEGGOTT COLLEGE
WAS 99% IN 2022**

.....

University Campus North Lincolnshire (UCNL) offers post-18 education for HNC, HND, degrees and Master's Degrees. It is a custom-designed higher education learning facility located alongside Central Park on the outskirts of Scunthorpe town centre. The campus offers an innovative Institute of Technology, modern business and community networking areas, and high-quality teaching space. It partners with employers, leading universities, and national training experts to offer courses that meet local and regional needs.

For unique, STEM-focused learning, **Engineering UTC Northern Lincolnshire in Scunthorpe** provides an innovative concept of education for 13-19-year-olds that combines technical, practical and academic learning to prepare them for future career opportunities.



Photo credit: Engineering UTC Northern Lincolnshire

YOUR MOVE: To Hull, East Yorkshire
and Northern Lincolnshire

Whether you like fine dining, or enjoy a beer after a long walk, North Lincolnshire is scattered with traditional countryside pubs, cosy cafés and delicious restaurants that can be enjoyed with friends or family.

A circular inset photograph of a woman with blonde hair tied back, wearing black-rimmed glasses and a black t-shirt with a blue and white striped apron. She is smiling and looking down at a small white plate she is holding in her left hand. Her right hand is holding a knife, and she appears to be cutting or spreading something on the plate. The background is a blurred kitchen setting with shelves and various items.

Discover the food delights of North Lincolnshire

FANCY FOOD



WINTERINGHAM FIELDS WAS AWARDED ITS MICHELIN STAR IN 2019

If you're looking for somewhere for a celebratory meal, or just fancy some luxurious food, Michelin Star restaurant **Winteringham Fields** is the perfect spot. Enjoy a unique dining experience with fresh seasonal local ingredients. For a taste of India, head to **Megna** or **Jaaz Pavilion** in Scunthorpe, or for European fayre, there's **Colosseo** or **San Pietro**.

DID YOU KNOW?

THE MARROWBONE & CLEAVER, KIRMINGTON, WAS OPENED BY A BUTCHER IN 1871

NORMANBY HALL HOSTS A SUMMER FOOD AND FLOWERS FAIR EVERY YEAR – A PERFECT DAY OUT FOR ALL THE FAMILY!

PUB GRUB

You're spoilt for choice for traditional country pubs in North Lincolnshire, with pubs like **Thornton Hunt Inn** in Thornton, **Yarborough Arms** in Ulceby and **Lord Nelson** in Brigg. **The Hope and Anchor** in South Ferriby offers traditional seasonal cuisine and historic dishes, alongside excellent ales, making it the perfect place for a pint after a walk. Treat the family and head to **The Nags Head** in Wootton, which has delicious food and an outdoor play area.



COFFEES AND CAKES

Relax at the weekend by going for breakfast, brunch, coffee or cake at one of North Lincolnshire's quaint coffee shops.

- **All Things Nice**, Scunthorpe
- **The Secret Garden Tearooms**, Elsham
- **Café Courtyard**, Brigg
- **The Singing Kettle Café**, Barton-upon-Humber



YOUR MOVE: To Hull, East Yorkshire and Northern Lincolnshire

North Lincolnshire is an exciting and vibrant place. Whether you're interested in outdoor adventure or local history and experiences, there's something for everyone to enjoy.

Get out and about



ART AND HISTORY



Visit Scunthorpe's **Visual Arts Centre** for lively contemporary art that regularly changes, or if you'd like to go yourself, join one of the many different workshops at **Huginnmuninn Gallery** in Barton-upon-Humber. To buy unique artworks and gifts, take a look at **The Steel Rooms** in Brigg. For an educational family day out, discover the area's aviation heritage across eight former RAF sites, or step back in time through fascinating hands-on displays at the **North Lincolnshire Museum** in Scunthorpe.

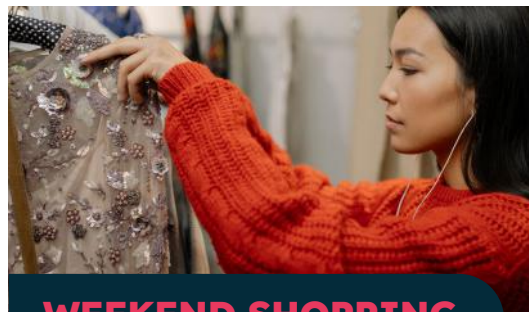


FOOD SHOP LIKE A LOCAL

Embrace North Lincolnshire culture by visiting your local markets and meeting local traders. Get your fresh fruit, veg and fish from **Ashby Market**, or visit award-winning **Brigg Farmers' Market** to sample the best of what North Lincolnshire has to offer.

DID YOU KNOW?

**NORTH LINCOLNSHIRE
MARKETS HAVE BEEN AROUND
FOR OVER 800 YEARS**



WEEKEND SHOPPING

If you enjoy shopping at independent retailers, then spend your weekend in the historic towns of Epworth or Brigg, home to unique shops. For more mainstream shopping, Scunthorpe has a range of retail parks with a variety of outlets.

CATCH A SHOW

**FOR LIVE
ENTERTAINMENT, VISIT:**

- **THE BATHS HALL,**
SCUNTHORPE
- **ROPERY HALL,**
BARTON-UPON-HUMBER
- **THE PLOWRIGHT
THEATRE,** SCUNTHORPE



GET OUTDOORS

For some fun for all the family, take to the trees at **Go Ape** at Normanby Hall, which has two high rope courses. Whether you're looking for an idyllic forest walk, or thrill-seeking, it's a great day out.



Photo credit :Go Ape

YOUR MOVE: to Hull, East Yorkshire
and Northern Lincolnshire

A young girl with brown hair, wearing a dark blue puffer jacket, is smiling and climbing a rope net on a playground. She is holding onto the ropes with both hands. The background is a blurred green field and some trees.

North Lincolnshire relaxation, adventure and play

North Lincolnshire offers a range of options to help you unwind and have some fun. From indulging in a relaxing spa day to getting your heart racing with adrenaline-fuelled activities, there's something for everyone.

REST, RELAX AND RE-ENERGISE

Unwind with a spa day at one of North Lincolnshire's stunning spas. Treat yourself to a facial, massage or dip in the pool by visiting **Sawcliffe Manor Country House**, Scunthorpe, **The Grange Spa**, Messingham, or **Forest Pines** in Broughton. Alternatively, take in some fresh air at one of the area's beautiful parks and gardens.

WALKING ESCAPES

- Far Ings Nature Reserve
- Normanby Hall
- Waters' Edge Country Park
- Humber Bridge
- Ashby Ville Nature Reserve
- Thornton Abbey



DID YOU KNOW?

WATERS' EDGE COUNTRY PARK AND VISITOR CENTRE, NEXT TO THE HUMBER BRIDGE, IN BARTON UPON HUMBER, IS HOME TO RICH AND VARIED WILDLIFE – INCLUDING MANY RARE AND MIGRATORY BIRDS



ADRENALINE ACTIVITIES

North Lincolnshire offers a range of exciting and unique activities that are fun for all ages.

Elsham Activity Centre, Elsham – outdoor activities including laser tag, battlezone archery and human table football.

Air Kings, Scunthorpe – home to wall-to-wall trampolines and more.

Skydive Hibaldstow – skydive from up to 15,000ft which is one of the highest in Europe.

ON YOUR BIKE

Try these scenic biking routes in North Lincolnshire.

- Going Dutch Loop
- Thornton Abbey Loop
- Laughton Forest



SPORTS FANS

Whether it's football, rugby or cricket, North Lincolnshire locals are passionate about their team. The region has football teams such as **Scunthorpe United** and **Winterton Rangers FC**, rugby team **Scunthorpe RUFC** and **Scunthorpe Town Cricket Club**, so you will be spoilt for choice.

- England stars Kevin Keegan and Ray Clemence both played for Scunthorpe United in the early 1970s
- Scunthorpe has a speedway team known as the Scunthorpe Scorpions who compete in the British Premier League



Days on your doorstep

**YORK IS NAMED
IN THE TOP 10
MOST WELCOMING
DESTINATIONS ON
EARTH FOR 2023**

Source: Booking.com, 2023 report

DAY TRIPPER

Be sure to make time for some day trips from the Humber region. Within easy reach, you can tour the historic cities of York and Lincoln, rock climb Malham Cove, hang out in the cosmopolitan cities of Leeds and Manchester, and relax along some amazing heritage coastline.



YORK

Visit York for a mix of history, ghost walk tours, shopping and fine dining on the Shambles. Stop by the stunning **York Minster** and discover **JORVIK Viking Centre**. **1hr by train – 50 mins by car**



MANCHESTER

Manchester is home to first-class football, and a thriving fashion, culture and music scene. Fun in the city doesn't stop when the sun goes down – explore all that Manchester's nightlife has to offer, from clubs and bars, to comedy shows. Visit the reopening of **Manchester Museum**, **Factory International** and Manchester's world-famous **Christmas Markets**. **2hrs by train – 1hr 50 by car**

LONELY PLANET HERALDS THE 'RENAISSANCE CITY OF MANCHESTER' IN BEST IN TRAVEL 2023 LIST

LINCOLN

Discover a city steeped in history, with cobbled streets and great places to eat in wooden-beamed pubs. Steep Hill is just as its name suggests, but well worth the walk! Visit the cathedral and castle, which is home to the Magna Carta.

2hr 30 by train – 1hr by car

LEEDS

A vibrant city that offers designer and independent boutique shopping, the arts and amazing nightlife. Visit national museum **Royal Armouries** and **Harewood House**.

1 hr by train – 50 mins by car



LONDON

London is one of the world's most visited cities and has something for everyone, from dazzling West End shows to iconic attractions. Visit **Big Ben**, the **Tower of London**, watch the **Changing of the Guard** at **Buckingham Palace** or enjoy a **Thames River** sightseeing cruise. **2hr 30 by train – 4hrs by car**



AND THERE'S MORE

Paddle in the sea at Scarborough, discover the delights of rock pooling in Staithes, explore **Doddington Hall** or take a trip on a steam railway. Visit the **Bronte Parsonage Museum**, **Belvoir Castle** and the world-famous gothic setting for Dracula, **Whitby Abbey**.

YOUR MOVE: To Hull, East Yorkshire and Northern Lincolnshire

FANCY VOLUNTEERING?

Volunteering is a great way to make new connections and get to know your new area once you've settled into your new home.

It's a fantastic way to spend spare time and give something back. It's also good for those looking to gain more experience in a particular area, or for young people who have relocated to a new area with parents and want something to add to university or job applications.

From serving teas at a knit and natter group or marshalling a sporting or cultural event, to becoming a driver, befriender or an emergency services volunteer, there's an opportunity just right for you.

Time2Volunteer is a platform for Hull and East Riding, bringing all the possibilities of volunteering into one place. It provides access to a wide range of opportunities as well as information and support in accessing volunteering.

Find out more here: <https://time2volunteer.org/>

Photo credit: HEY Smile Foundation



A place to thrive

Alan Wood & Partners is a Civil, Structural and Building Consultancy firm, established in Hull over 55 years ago. We provide highly skilled professional services, supporting multi-million pound projects all over the UK.

We believe in community and create an environment that ensures people are supported to reach their true potential.

Whether you are a trainee, graduate or expert in your field, you will find Alan Wood & Partners' culture is one of care, inclusion and provides a space to thrive in. With us you can go as far as your ambition takes you.



Find out more about becoming part of a business that helps shape the way we live.

Locations: Hull | Leeds | Lincoln | Scarborough | Sheffield | York



Alan Wood & Partners

www.alanwood.co.uk



Smith+Nephew

Join us!

We continue to actively build an environment where every individual can fulfil their potential and be proud ambassadors for Smith+Nephew, our customers and their patients.

We value the diversity of our people and welcome applications from everyone.

It's more than business at Smith+Nephew - it's personal. What we do every day, changes lives every day.

Healthcare is in Smith+Nephew's DNA. From a single pharmacy in Hull, UK to a presence in over 100 countries, we've spent more than a century and a half working at the leading edge of medical technology.

At Smith+Nephew, you will find a company of people who care about each other, about our customers and their patients, and about the communities where we live and work.

Join us as we continue to make our work personal, to innovate and to develop devices that help to restore patients' bodies, and enable them to regain their futures.

Join our Talent Community to stay in touch with us and find out more about us.



Scan and discover





There's plenty of opportunity in the UK's energy estuary

There has never been a better time to both live and work in the Humber region. Investments at scale, combined with an ideal location with excellent connectivity and transport links, mean the Humber has become a hub for business growth and development. This has attracted further inward investment from around the UK and the world.

Photo credit: SSE Thermal

Photo credit: ABP



A BUSINESS POWERHOUSE

The Humber manufactures and transports goods and services worldwide, including renewables and biomass energy, engineering, chemicals, food processing and digital industries, all supported by a diverse and skilled workforce. Other parts of the energy sector include biofuels, energy from waste and energy storage, making the Humber the most prepared region in the UK for the green energy transition to a net zero future.

**THE HUMBER
IS BECOMING A
GLOBAL EXEMPLAR
OF A DECARBONISED,
RESOURCE-OPTIMISED
CLUSTER, SUPPORTED
BY CLEAN ENERGY
GENERATION**

“ The Humber offers one of the best examples of successful UK clusters. ”

Chris Sood-Nicholls, Managing Director
of Regional Development at Lloyds Bank

Source: Bloomberg US Edition, June 2022 article



Photo credit: Siemens Gamesa

YOUR MOVE: To Hull, East Yorkshire
and Northern Lincolnshire

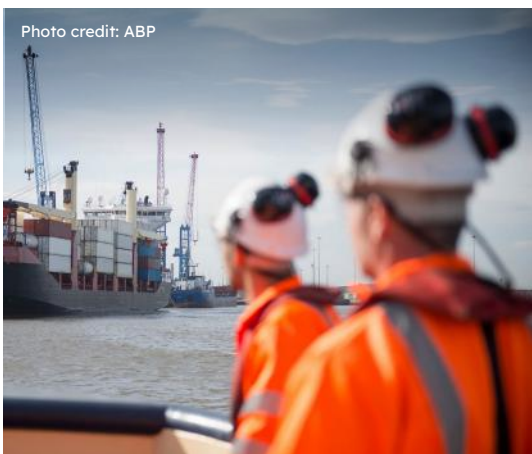


Photo credit: ABP

THE HUMBER'S KEY SECTORS

Though the Humber is home to a wide variety of businesses offering all kinds of goods and services, there are several key sectors that dominate our economy and drive growth.

Renewables: The Humber region leads the UK in the renewables sector - with offshore wind and biofuels at the forefront of the energy estuary's green output.

Ports and Logistics: The Humber ports, which have recently been granted Freeport status, are the UK's busiest trading complex, handling over 75m tonnes per year of dry bulk, liquid bulk and many other commodities.

Healthcare: Investments in state-of-the-art healthcare centres and cutting-edge facilities for research and industry are led by global giants such as Reckitt and Smith+Nephew.



Photo credit: Reckitt



Food: From the land to the sea, the Humber is a huge producer of food and drink. The Department for International Trade reports that food and drink exported by Yorkshire and the Humber is currently worth £1.14bn.

Chemicals: The Humber has the UK's second largest chemical cluster, with strategically important national assets including two refineries.

Digital: Home to large agencies and enterprising solo entrepreneurs alike, there is a creative buzz around the Humber - including the £15m purpose-built Centre for Digital Innovation (C4DI) in Hull.

Manufacturing and Engineering: A large proportion of our workforce, double the national average, are employed in manufacturing - everything from food, to healthcare products, to caravans.

DID YOU KNOW?

THERE ARE
APPROXIMATELY
7,000
DIGITAL JOBS
BASED IN HULL ALONE

YOUR MOVE: To Hull, East Yorkshire and Northern Lincolnshire

DID YOU KNOW?

80% OF THE UK'S HOLIDAY HOMES ARE PRODUCED IN THE HUMBER REGION



ENTERPRISING SMEs

The Humber is proud to be home to thousands of creative and entrepreneurial businesses, underpinning the supply chains for all our key sectors. From world-class professional services to dynamic creative agencies – everyone works together to build a thriving business environment.

THE COMPANY WE KEEP



YOUR MOVE: To Hull, East Yorkshire and Northern Lincolnshire

Future-proof your career

There's never been a better time to think about a clean, green career in the Humber renewables sector.



Currently, one in 20 people in the Humber region are employed in a job in the renewables sector, and this is only set to grow.

Home to some of the biggest offshore wind farms in the world, the Humber is the base for several employers, including **Siemens Gamesa** and **Ørsted**, which have careers ranging from assembly and production, to repair and maintenance.

These global businesses are underpinned by a strong supply chain, providing further and varied roles, from engineering to logistics.

We're also home to green innovation – and there's an appetite in the Humber to support entrepreneurs invested in a green future for the region.

Luckily, the Humber is already equipped to train people for future careers – with regional colleges, specialist training providers and courses at the University of Hull, from degree to PhD level all available.

GREEN CAREERS

- WIND TURBINE TECHNICIAN
- PAINT FINISHER
- WEATHER FORECASTER
- BIOFUEL ENGINEER
- HEAT PUMP INSTALLER



DID YOU KNOW?

HORNSEA ONE, TWO AND THREE WILL BE THE WORLD'S BIGGEST OFFSHORE WIND FARMS. HORNSEA PROJECT TWO ALONE WILL PRODUCE ENOUGH GREEN ENERGY TO POWER 1.3M UK HOMES

THANKS TO KCOM HULL, EAST YORKSHIRE AND LINCOLNSHIRE WILL BE THE FASTEST, FUTURE-PROOFED AND MOST ACCESSIBLE FULL FIBRE BROADBAND NETWORK IN THE UK

Location & Connectivity

Day tripper

Fancy some time away?
The Humber region is well-connected...

By Car

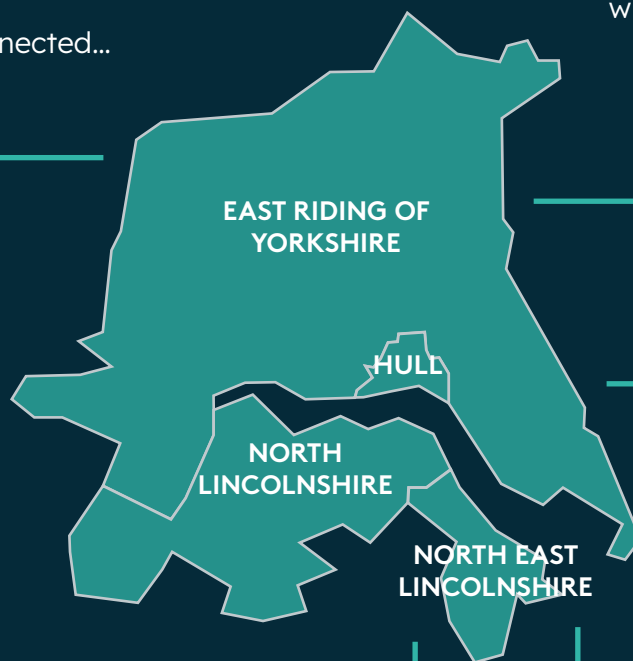
You can be in Leeds, York, Lincoln and Sheffield within an hour, and Manchester within two. The A1 (M) is also less than an hour – providing a direct route to Edinburgh in the north and London in the south.

By Plane

Humberside Airport is our region's very own airport, with more than 90,000 passengers flying in and out last year. Destinations include Aberdeen, Amsterdam, Bulgaria, Denmark, Iceland, Jersey, Majorca and more.

Many of these flights are chartered by Eastern Airways, one of the UK's leading domestic airlines.

www.humbersideairport.com



By Rail

Jump on a direct train to a multitude of cities - including York, Leeds, Manchester and Liverpool. You can even get to London with Hull Trains in just over two hours. Perfect for a weekend getaway.

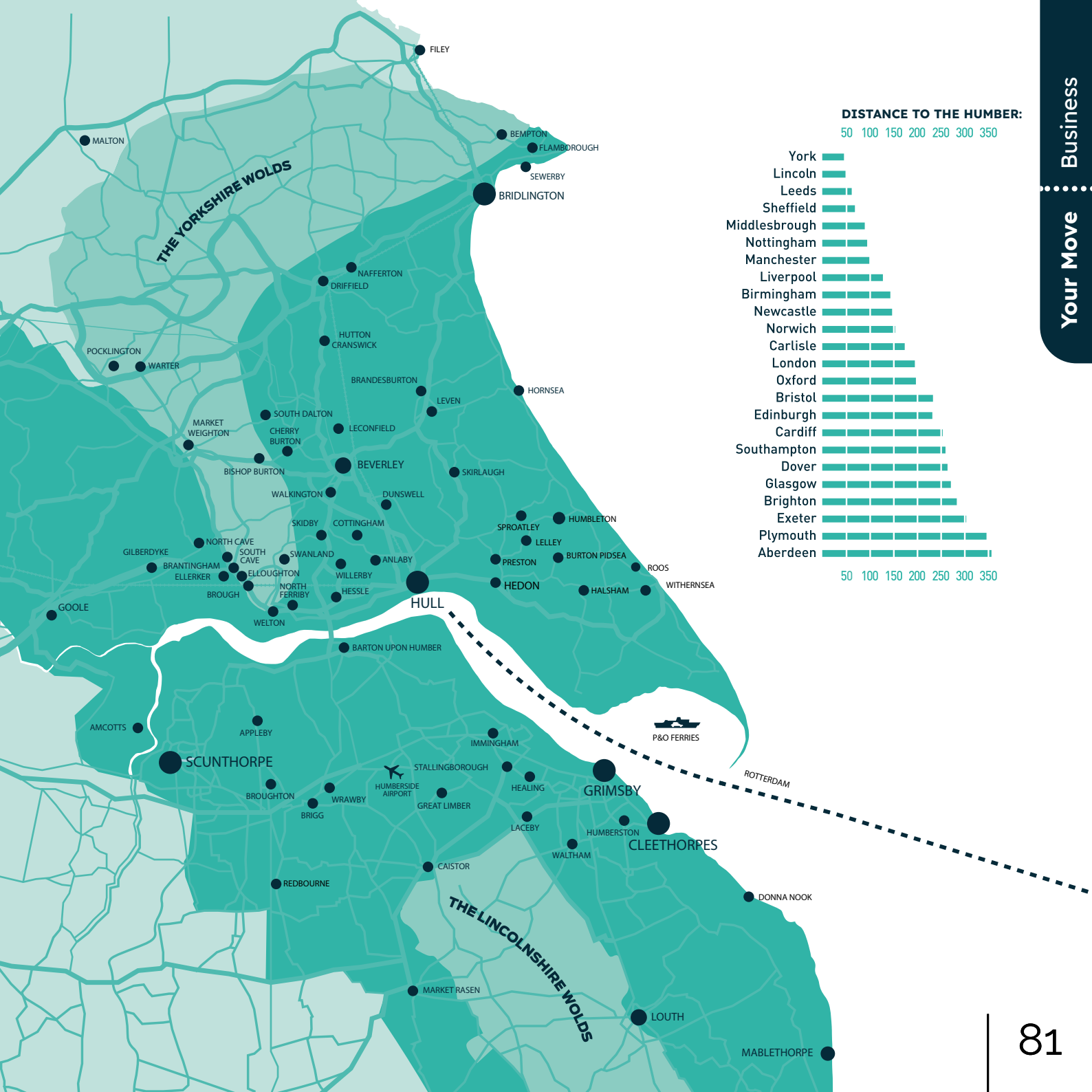
www.hulltrains.co.uk

By Boat

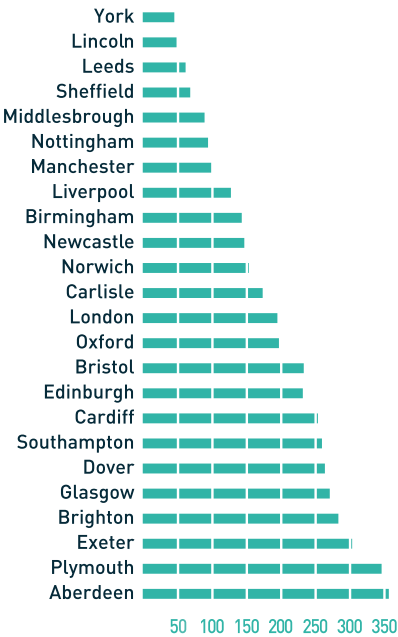
Sail across to Rotterdam for a 'Dutch Dash' from the Hull Ferry Terminal, which offers daily crossings.

By Bus

Hull Card Week is a single on both Stagecoach and East Yorkshire Motor Services buses for just £17.20 for the week and a Grimsby 7 Day MegaRider is only £16.00.



DISTANCE TO THE HUMBER:
50 100 150 200 250 300 350



CONSIDERING A CAREER IN ACCOUNTANCY?

At Smailes Goldie you'll be part of an independent firm with a family-friendly feel but with all the benefits of working for one of the 'big four'.

Our benefits include;

- A competitive salary
- Office and remote working flexibility
- Regular wellbeing and social events
- Apprentice scheme
- Trainee programme
- Paid study leave
- Referral incentives
- City centre office
- Free onsite parking
- A great working environment

*Join our growing team in the vibrant city
of Hull and see your career flourish.*

Interested? Contact us today at
recruitment@smailesgoldie.co.uk

A new, green industrial revolution

Bioenergy with carbon capture and storage (BECCS) at Drax will see the world's largest, single-site, carbon capture project created right here in the Humber. Not only will this boost green skills and support 10,000 jobs in the community, it will also generate dispatchable, renewable power, delivering energy security for thousands of British homes and businesses.



Discover more
drax.com/BackBECCS

Carbon
Capture | by drax



Future
Humber

Future Humber
C4DI @TheDock
31-38 Queen Street
Hull, HU1 1UU
Tel: +44 (0)1482 485242
E: bondholders@futurehumber.com
W: www.futurehumber.com

