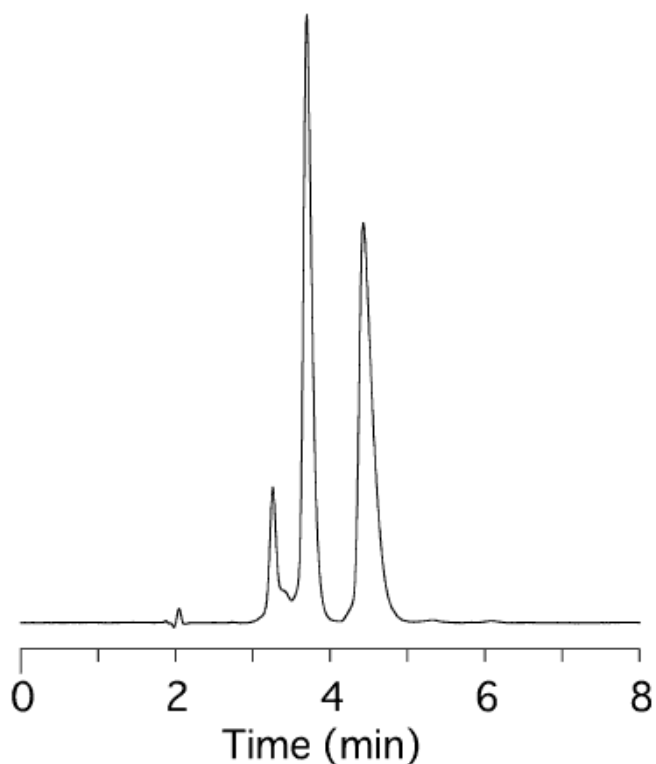


Analysis of 2-(p-chlorophenoxy) propionic acid

Data No. LA402-0000



Column : Bioptic AV-1
5 μ m
150 \times 4.6 mm I.D.

Solutes : D,L- 2-(p-chlorophenoxy)propionic acid

Column Cat. No. : 5020-02511

Eluent : MeCN / 50mM phosphate buffer (pH6.7) = 1 / 99 (w / w)

Flow rate : 1.0 mL/min.

Col. Temp. : 40°C

Detection : UV 254 nm

Injection Vol. :

Sample : D,L- 2-(p-chlorophenoxy)propionic acid