

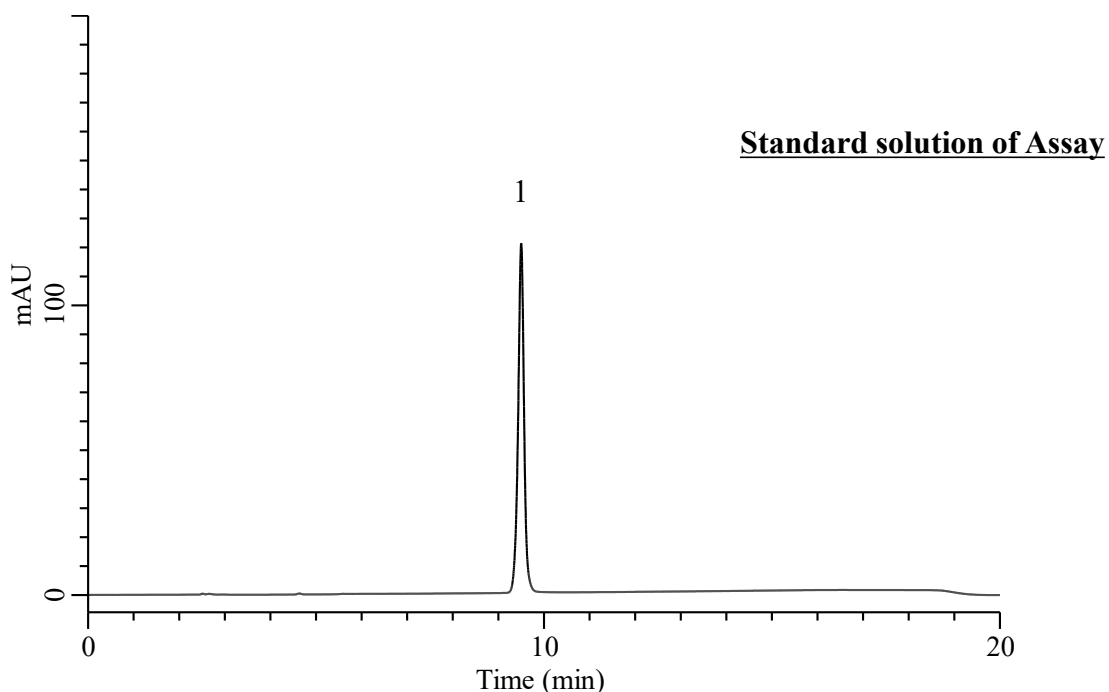
InertSearch for LC

Inertsil Applications

Analysis of Febuxostat

(Under the Condition of Draft for USP, Febuxostat)

Data No. LB871-7111



Conditions

System : Chromaster HPLC system (HITACHI)
Column : InertSustain Phenyl HP (GL Sciences Inc.)
(3 μ m, 300 x 4.6 mm I.D.)
Column Cat. No. : 5020-
Eluent : A) CH₃CN/ Buffer* = 25/75, v/v
B) CH₃CN/ Buffer* = 75/25, v/v

Analyte:

1. Febuxostat 0.025 mg/mL
Tailing factor : 0.98 (0.8 - 1.8)
RSD of the peak area (%) (n=6) : 0.08 (\leq 0.73)

Time (min)	A (vol %)	B (vol %)
0.0	55	45
12.0	35	65
15.0	35	65
15.1	55	45
20.0	55	45

Flow Rate : 1.2 mL/min
Col. Temp. : 50 °C
Detection : UV 218 nm
Injection Vol. : 10 μ L
Sample : Standard

*Dissolve 1.36 g of potassium phosphate monobasic in 1 L of water. Adjust with 67 mL/L of phosphoric acid in water to a pH of 3.0.