

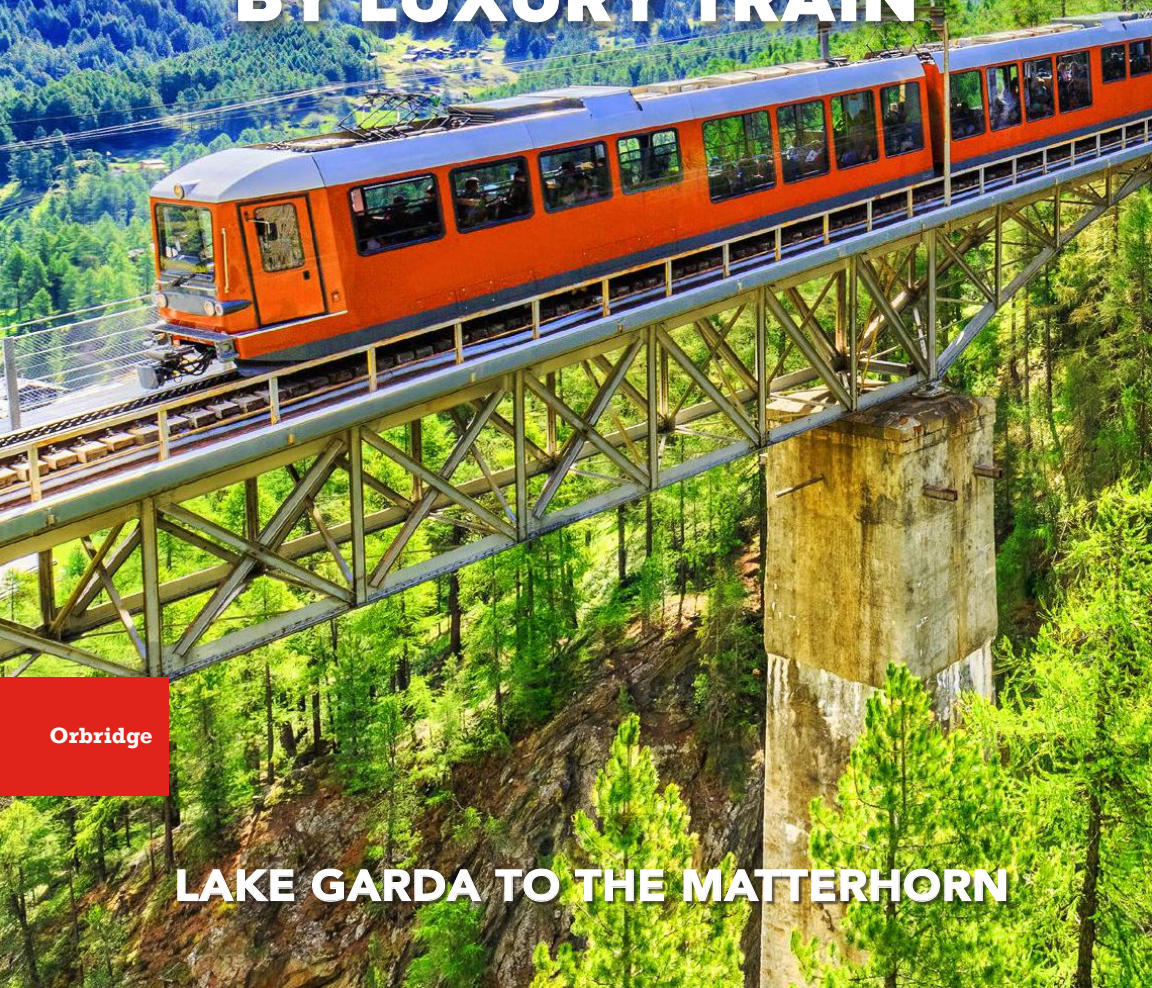


**PennState
Alumni Association**

JUNE 9-18, 2026

.....
with optional
Prosecco Pre-Tour and
Mont Blanc Post-Tour

ITALIAN LAKES AND SWISS ALPS BY LUXURY TRAIN



Orbridge

LAKE GARDA TO THE MATTERHORN



Dear Penn State Travelers,

Imagine gliding through the heart of Europe aboard iconic trains as the boundless beauty of Italy and Switzerland unfolds before your eyes. Each day offers an exceptional blend of cultural richness and natural splendor, combining the allure of historic villages with the breathtaking grandeur of the Alps. From the tranquil shores of Lake Garda to the dramatic peaks of the Matterhorn, you'll experience a seamless fusion of adventure and relaxation.

In the evenings retreat to enchanting accommodations in stunning locations—each a haven of tranquility featuring breathtaking views, impeccable amenities and warm hospitality.

Begin along the shores of Lake Garda, where picturesque villages and serene waters provide a peaceful start to your journey. Ascend into the picturesque Dolomites aboard a rotating funicular to the summit of Monte Baldo. In Trento, history and flavor converge as you explore its Renaissance charm and visit a local winery for a tasting of the region's acclaimed sparkling wine.

Excitement continues as you traverse from Tirano to Pontresina on board the *Bernina Express* then from Pontresina to Zermatt on board the *Glacier Express*. Through panoramic windows you'll witness the dramatic beauty of glaciers, alpine lakes and verdant valleys as you make your way through the Engadin Valley to the heights of the Alps.

With significant savings of more than \$1,000 per couple, and with limited space available, we anticipate this tour will fill quickly.

To reserve, visit alumni.psu.edu/travel or call (866) 639-0079.

Let Penn State Alumni Association be your passport to more than 30 destinations around the globe. Our educational travel program allows you to explore historic sites, other cultures, and local cuisine, all in the company of fellow alumni. Be a part of our traveling pride of Nittany Navigators on a carefree adventure! For information on all our tours please visit www.alumni.psu.edu/travel.

For the glory,

Penn State Alumni Association

Italian Lakes and Swiss Alps by Luxury Train | Itinerary Highlights

Day 1 EN ROUTE FROM U.S.

1

Day 2 ARRIVE IN VERONA, ITALY | LAKE

2

GARDA Upon arriving to Verona Airport an Orbridge representative will be waiting to assist with your transfer to Lake Garda. Take time to unpack and freshen up before joining the group at the hotel restaurant for a lovely welcome dinner.
Overnight: Du Lac et Du Parc Grand Resort (D)

Day 3 MALCESINE Embark on an extraordinary

3

journey to the summit of Mount Baldo aboard a funicular. As you ascend the rugged mountainside, your cable car slowly rotates providing 360° panoramic views of shimmering Lake Garda below and the imposing peaks of the Dolomites at the horizon. At the top join a guide for a leisurely walk followed by a picnic lunch. Then return to Malcesine either by cable car or by hiking down the mountain path. Enjoy time to explore Malcesine independently before returning to the hotel for a private panoramic cruise on Lake Garda.
Overnight: Du Lac et Du Parc Grand Resort (B,L)

Day 4 TRENTO Meet with a local guide for a

4

panoramic walking tour of Trento's historic center, passing by notable landmarks including Piazza del Duomo, the Fountain of Neptune, Palazzo Pretorio and the Cathedral of San Vigilio. Next visit a local winery for a tour and tasting with lunch. The evening is at leisure.
Overnight: Du Lac et Du Parc Grand Resort (B,L)

Day 5 TIRANO | BERNINA PASS | ENGADIN

5

VALLEY Take a private transfer to the colorful village of Tirano for independent exploration and lunch on your own. Early afternoon, board the legendary *Bernina Express* which travels along a portion of a route recognized as a UNESCO World Heritage Site. The train's expansive windows provide uninterrupted views of the passing Alpine landscapes. Wind through lush vineyards before ascending to the dramatic heights of the Bernina Pass at 7,578 feet above sea level.
Overnight: Hotel Steffani (B,D)

Day 6 MUOTTAS MURAGL Board a historic

6

wooden funicular for the ascent to Muottas Muragl peak. Next journey to a local dairy farm to experience the generations-old Alpine traditions of cheese-making. Tour the property before sitting for a delicious tasting and lunch.
Overnight: Hotel Steffani (B,L)

Day 7 ZERMATT Continue your rail adventure

7

aboard the *Glacier Express*. Known as the "slowest express train," the *Glacier Express* offers a well-paced ride allowing you to fully appreciate the remarkable scenery amidst the comforts of its sleek, modern carriages. Throughout the journey, be treated to impeccable onboard service including a gourmet lunch served at your seat.
Overnight: Chalet Hotel Schöneegg (B,L,D)

Day 8 ZMUTT VALLEY Meet a local guide for a

8

walking tour through Zermatt. Next join a local mountaineering Swiss guide aboard a gondola to ascend to Klein Matterhorn's summit—known as Matterhorn Glacier Paradise—more than 12,000 feet above sea level. Ride the gondola down to Furi for lunch with spectacular views over the Zmutt Glacier Valley. In the afternoon return to Zermatt by gondola or choose to take a tranquil hike down to the village.
Overnight: Chalet Hotel Schöneegg (B,L)

Day 9 GORNER GLACIER Meet with a

9

mountaineering guide before boarding the Gornergrat Bahn cogwheel railway, the highest train in Europe. Ascend far above Zermatt to experience one of the best viewpoints in the Alps. Then set off on a hiking excursion offering jaw-dropping views of the Matterhorn. Concluding the hike, stop for lunch on your own at a mountain hut, then return to Zermatt by train. The remainder of the afternoon is at leisure for independent exploration. This evening gather for a special farewell dinner.
Overnight: Chalet Hotel Schöneegg (B,D)

Day 10 ZERMATT | ZURICH | DEPART FOR U.S.

10

After breakfast guests departing during the suggested times will take a short train ride to Täsch and then connect with a private transfer to Zurich Airport for flights home. (B)

(B = Breakfast, L = Lunch, D = Dinner)

What's Included

- 8 nights luxurious hotel accommodations in Lake Garda, Pontresina and Zermatt
- Comfortable seating and amenities while on board *Bernina Express* and *Glacier Express*
- 8 breakfasts, 5 lunches and 4 dinners including a special welcome dinner
- Private tours, admission, rail fares and special small-group excursions as noted in the 10-day itinerary
- Full guiding services of an Orbridge Travel Director and expert local guides
- Private motor coach transportation
- Luggage portage
- Gratuities to Orbridge Travel Director, local guides, drivers, porters, rail staff and wait staff for included meals
- Airport transfers for guests arriving and departing during the suggested times

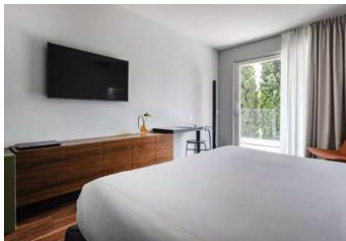


Activity Level: Guests should be comfortable boarding and disembarking trains without assistance, walking and moving between coaches while the train is in motion and navigating stairs to upper level of the coach. Guests should also be able to enjoy outdoor walking with sure-footing on uneven terrain, get in and out of a motor coach without assistance, and be able to manage stairs.

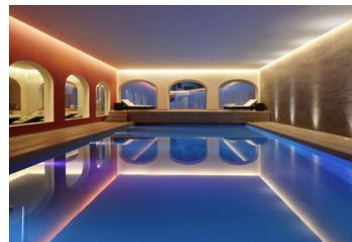
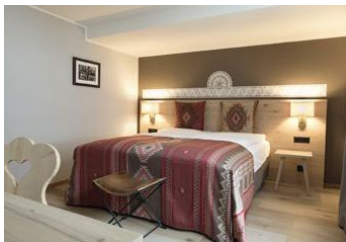


Accommodations *(subject to change)*

DU LAC ET DU PARC GRAND RESORT



HOTEL STEFFANI



CHALET HOTEL SCHÖNEGG





Optional Pre-Tour Prosecco

Nestled in the northeastern part of Italy, Prosecco is a picturesque region renowned for its rolling hills, charming villages and, of course, its world-famous sparkling wine. Located in the Veneto region, just north of Venice, Prosecco offers a delightful blend of natural beauty, cultural richness and gastronomic excellence.

Day +1 EN ROUTE FROM U.S.

Day +2 **ARRIVE IN VERONA, ITALY | PROSECCO** Begin your Italian escapade with a visit to Villa Valmarana ai Nani in Vicenza. This splendid property is renowned for its exquisite frescoes by the famous 18th-century painter Giambattista Tiepolo and his son, Giandomenico Tiepolo. The villa is surrounded by lush gardens offering stunning views of the surrounding countryside. The highlight of the garden is a series of 17 stone dwarf statues ("nani" in Italian) that give the villa its name. According to local legend, these statues represent the dwarf servants of a noble family and add a whimsical touch to the garden's elegance. Next gather with a trained chef for a lively, hands-on cooking class. Later check into your hotel and enjoy some time at leisure before gathering for dinner.

Overnight: Palazzo Scamozzi (D)

Day +3 **PROSECCO** Prosecco is synonymous with its sparkling wine, and a visit to the region wouldn't be complete without touring its stellar vineyards. Set out for tours and tastings at two unique wineries. Learn about the cultivation of Glera grapes, the traditional and modern methods of winemaking and the unique characteristics that make Prosecco so special. Guided tasting sessions provide the opportunity to savor different Prosecco varietals. There will be time to explore independently before dinner this evening.

Overnight: Palazzo Scamozzi (B,L,D)

Day +4 **PROSECCO | LAKE GARDA | MAIN PROGRAM BEGINS** After breakfast depart for Lake Garda to join guests arriving for the main program. (B)

What's Included

- 2 nights hotel accommodations
- 2 breakfasts, 1 lunch and 2 dinners
- 2 vineyard tours and tastings
- Transportation for included tours
- Luggage portorage
- Gratuities to local guide, drivers, porters and wait staff for included meals
- Airport transfers for guests arriving during the suggested times



Optional Post-Tour Mont Blanc

Journey through Italy's Aosta Valley—a region steeped in history and culture—for an authentic alpine experience. Discover well-preserved historical sites and Roman ruins before ascending to Pointe Helbronner by cable car for spectacular views of the Mont Blanc massif.



Day 10 AOSTA Depart for Aosta, capital of the small region called Valle d'Aosta (Aosta Valley). Founded by the Romans in 25 B.C., the town of Aosta features well-preserved historical sites including the Arch of Augustus, the Porta Praetoria and the Roman Theatre. Enjoy a decadent fondue-based lunch before joining a local guide for a comprehensive walking tour. Descend into the cryptoporticus—a semi-subterranean gallery consisting of two parallel tunnels connected by a series of cross-vaulted passages. Its overall layout forms a rectangular shape that mirrors the outline of the Roman forum it once supported. Continue to your hotel to check in and enjoy the remainder of the evening at leisure. Overnight: Duca D'Aosta (L)

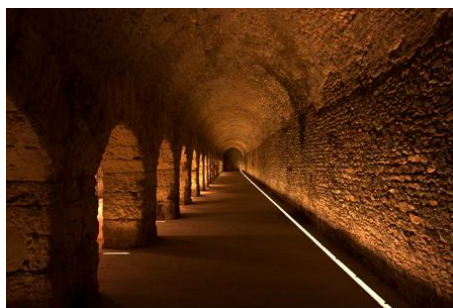
What's Included

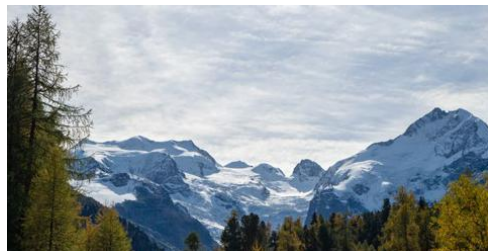
- 2 nights hotel accommodations
- 2 breakfasts and 2 lunches
- Guided panoramic walking tour of Aosta
- Cable car ride including admission
- Transportation for included tours
- Luggage portage
- Gratuities to local guide, drivers, porters and wait staff for included meals
- Airport transfer for guests departing during the suggested times

Day 11 AOSTA | MONT BLANC | AOSTA Set off on a scenic drive to Courmayeur situated at the base of Mont Blanc. Board the Skyway Cable Car for a breathtaking, nearly 11,000-foot ascent to Pointe Helbronner. Throughout the ride, the cable car rotates providing 360° panoramic views over the diverse terrain. At the top a spacious terrace and multiple viewing platforms offer spectacular, unobstructed views of the Mont Blanc massif including iconic peaks Dent du Géant and the Grandes Jorasses. After lunch at Kartell Bistrot Panoramic board the cable car for the returning descent to Courmayeur. The remainder of the day is open for independent exploration. Overnight: Duca D'Aosta (B,L)



Day 12 AOSTA | MILAN | DEPART FOR U.S. After breakfast take the complimentary transfer to the airport for flights home. (B)





JUNE 9-18, 2026

Prosecco Pre-Tour: June 7-10, 2026

Mont Blanc Post-Tour: June 18-20, 2026

RESERVE YOUR SPACE TODAY

Online: psu.orbridge.com

Phone: (866) 639-0079

Category	Standard Rate	Special Rate*
Double	\$10,499	\$9,995
Single	\$13,499	\$12,995
Prosecco Pre-Tour	Standard Rate	Special Rate*
Double	\$1,999	\$1,795
Single	\$2,699	\$2,495
Mont Blanc Post-Tour	Standard Rate	Special Rate*
Double	\$2,199	\$1,995
Single	\$2,899	\$2,695

DEPOSIT AMOUNT PER PERSON

\$500 pre-tour • \$850 main tour • \$500 post-tour

*Special group rates; limited offer. All rates are per person in U.S. dollars based on double occupancy except where noted as Single. Single availability limited. Unless noted otherwise, airfare is not included.

**An exclusive Early Booking Bonus, Expedition Libraries are curated collections of useful resources and background reading tailored to this program. Place your deposit on or before the specified date, and one Expedition Library per room will be sent after receipt of final payment. Libraries may be purchased; call for details. Full Terms & Conditions at terms.orbridge.com. Any payment to Orbridge, LLC constitutes your acceptance of the terms and conditions set out therein, including but not limited to the cancellation and refund terms.

CST#2098750-40 WST#602828994

Orbridge takes seriously the responsibility to minimize our global environmental impact. Each year we plant 100,000 trees in U.S. State Forests with afforestation needs as an ongoing initiative among our evolving sustainability efforts. Learn more at orbridge.com/going-green.





**PennState
Alumni Association**

Penn State Alumni Association
Hintz Family Alumni Center
University Park, PA 16802

ITALIAN LAKES AND SWISS ALPS BY LUXURY TRAIN

JUNE 9-18, 2026

Special Alumni Rate:

Save more than **\$1,000** per couple

30-day refund guarantee

Trip cancellation insurance is available through the Penn State Alumni Association for comprehensive coverage of expenses in conjunction with cancellations due to illness or accident as well as damaged or lost luggage. You will receive insurance information, via email, from Penn State after you make your reservation. Complete details are available on the Alumni Association website at alumni.psu.edu/travel.

If you choose to make your own flight arrangements for an alumni tour and not use those provided by the tour company, we recommend that you not do so until making your final payment to the tour company confirming details of your trip's scheduled departure. However, if you choose to make your own flight arrangements, the Penn State Alumni Association is not liable for any loss resulting from tour cancellations or changes to tour dates.

Participants attending this or other tour programs offered by the Penn State Alumni Association may be photographed for the educational and promotional use of the Alumni Association and Penn State.

Please note that all package rates and itineraries listed are subject to change. The most current information is available on the Alumni Association website at alumni.psu.edu/travel.

All alumni tours include optional physical activities for those inclined to be more active.

Unless promoted as a Penn State exclusive tour, your group may include travelers from other universities.

Penn State encourages qualified persons with disabilities to participate in its programs and activities. If you anticipate needing any type of accommodation or have questions about the physical access provided, please contact the tour operator in advance of your participation or visit.

This publication is available in alternative media on request. Penn State is an equal opportunity, affirmative action employer, and is committed to providing employment opportunities to all qualified applicants without regard to race, color, religion, age, sex, sexual orientation, gender identity, national origin, disability or protected veteran status. UBR ALU 25-24

FREE EXPEDITION LIBRARY
AN EXCLUSIVE EARLY
RESERVATION BONUS

Reserve by
September 26, 2025**

PRSRT STD
U.S. POSTAGE
PAID
PERMIT NO. 825
SAN DIEGO, CA