

PREMIERE EDITION

THE WHITE HOUSE

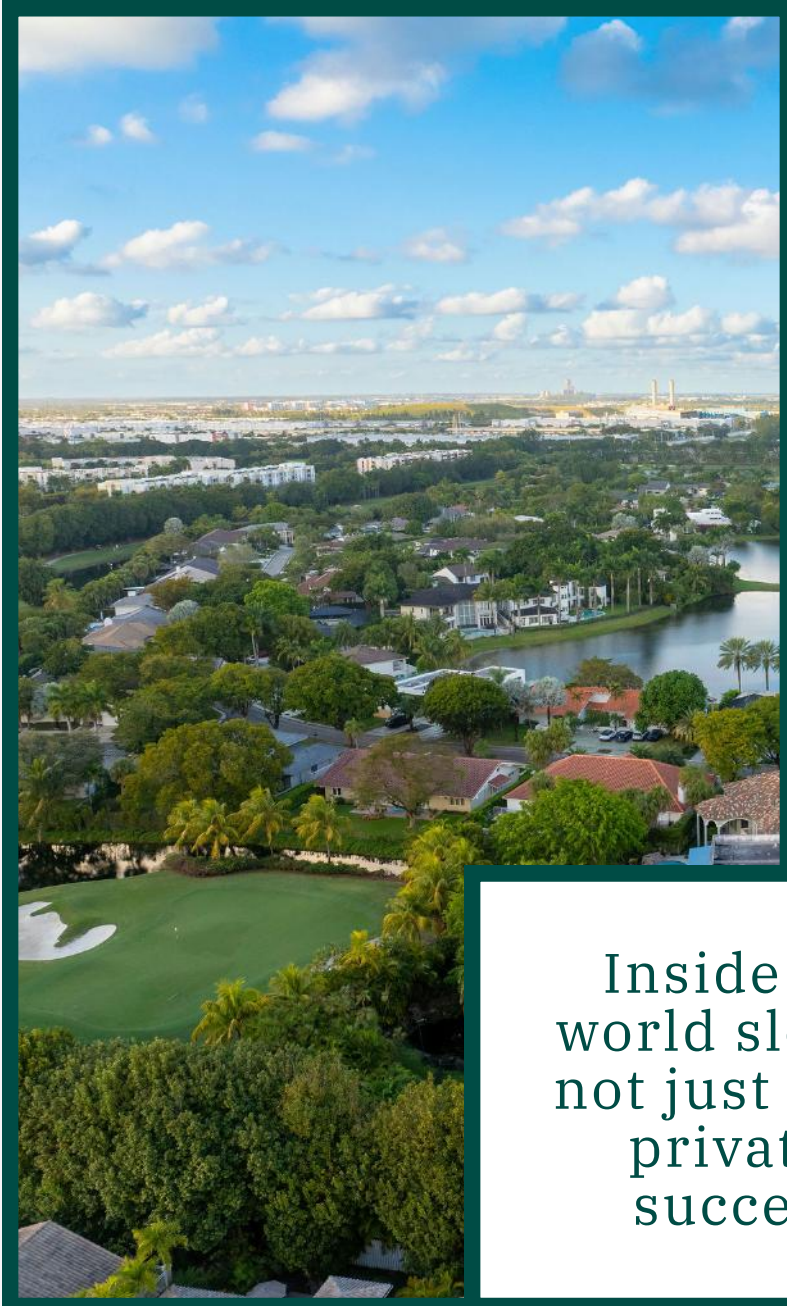
Feb 2026

Of Doral Estates

UNVEILED.
UNRIVALED.
UNPRECEDENTED.

DORAL ESTATES

A Private Ecosystem of Success and Silence.



Living at Doral Estates offers a rare balance: the quiet of a secluded retreat with the convenience of city living. With strictly controlled access and limited residences, this is a neighborhood where safety is a given and the streets are peaceful.

Ideally located near top-tier schools and fine dining, you are minutes away from everything you need, yet completely protected from the city's noise.

It is a deliberate sanctuary for those who command the day but require absolute peace at night. A life designed without compromise.

Inside these gates, the world slows down. This is not just an address; it is a private ecosystem of success and silence.

This is not just where you live.
It is where you recharge.

TRUMP NATIONAL DORAL GOLF CLUB

Legendary Status. Immediate Access



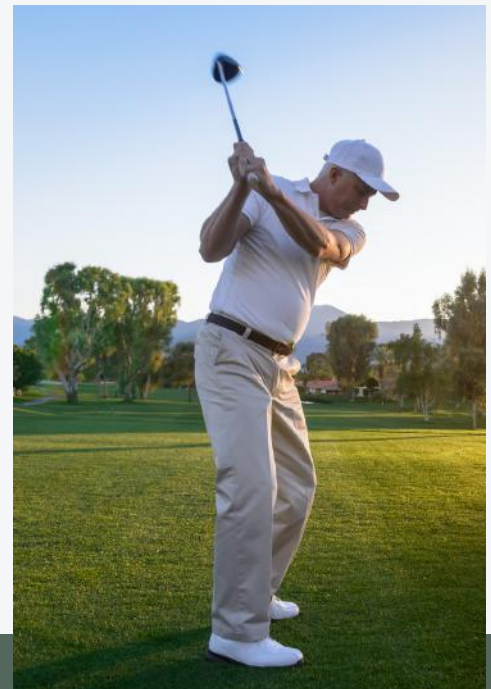
YOUR PRIVATE GATEWAY TO A WORLD-CLASS LIFESTYLE.

SEAMLESSLY CONNECTED VIA GOLF CART.

Living in Doral Estates means the resort is part of your daily routine. Enjoy immediate, privileged access to a global wellness and social hub, right outside your door:

- Signature Dining & Social Lounges
- Full-Service Luxury Spa
- Elite Performance & Fitness Center
- Royal Palm Pool & Cabana Service
- Curated Retail & Pro-Shop Access
- Private Event Venues

This residence offers the rare privilege of living within a resort ecosystem. It is not just about playing golf; it is about having world-class infrastructure as part of your daily routine.



**UNRIVALED ACCESS.
UNMATCHED PRESTIGE.**



Volume and Warmth:

The 18-foot ceilings create an immediate sense of open space, while custom wood detailing brings warmth and connection throughout the home.



A masterpiece of light and volume, defining the art of seamless indoor-outdoor living.



CUSTOM ARCHITECTURE. SEAMLESS FLOW.



**AN OPEN-PLAN
LAYOUT
DESIGNED FOR
BOTH DAILY
RETREAT AND
HIGH-LEVEL
ENTERTAINING.**



ELITE PERFORMANCE.
**RADIANT
DESIGN.**



An expansive social
island featuring a
curated suite of
Thermador, Miele,
and Sub-Zero
technology, all
bathed in abundant
natural light





**THE ARCHITECTURE
OF REST**



Integrated with a private terrace and golf course vistas, this suite features a spa-grade bath for the absolute recharge you deserve.

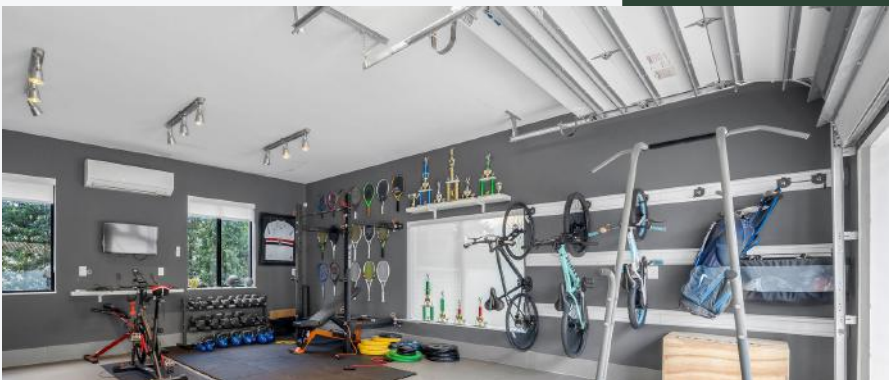
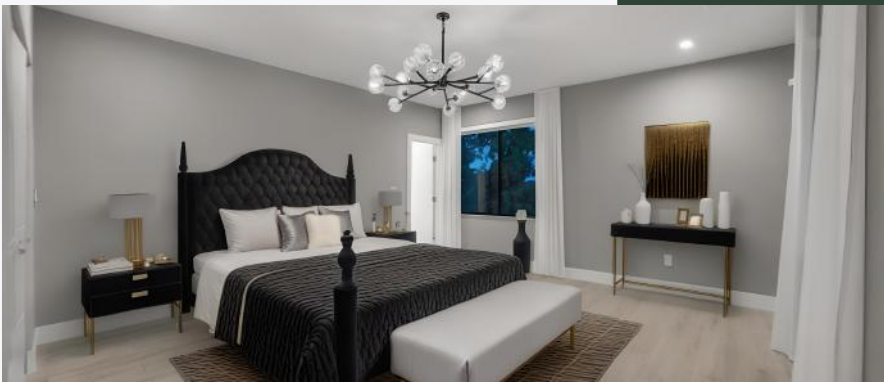
EXPANDED LIVING



FLOW AND FUNCTION

A versatile floor plan designed for modern demands, featuring five ensuite bedrooms with one ground-level suite and four upstairs.

The climate-controlled garage serves as a private gym while maintaining full infrastructure for two vehicles.



OUTDOOR AREA

**A REFINED
OUTDOOR
RETREAT
DESIGNED FOR
ELEVATED
LIVING:**

a heated
saltwater pool
ideal for
entertaining,
a spacious and
comfortable
outdoor social
area,
and a serene
lake separating
the home



*Beyond the refined aesthetics,
this estate is engineered for the
individual who demands technical
mastery and absolute peace.*



5



5.5

6,614 SqFt

01.

ARCHITECTURAL & DESIGN FEATURES

- Secure gated arrival
- Soaring 18-foot ceilings
- Custom architectural wood paneling
- Comprehensive interior updates

02.

OUTDOOR & LIFESTYLE

- Natural lake buffer
- Heated saltwater pool
- Outdoor fire pit lounge
- Climate-controlled private gym
- Direct golf-cart access to Trump National Doral Golf

03.

KITCHEN, APPLIANCES & INTERIOR CONVENIENCES

- Sub-Zero Wine Storage
- Thermador appliances
- Miele Coffee System & Microwave
- Integrated social area audio

04.

INFRASTRUCTURE & SYSTEMS

- Impact-rated windows and doors
- Independent gas reservoir
- Emergency gas generator
- Aquafeel whole-house water purification
- Quad-zone Carrier HVAC system

**Technical mastery designed for a life
without interruption.**

***A RARE ASSET.
A STRATEGIC PARTNERSHIP.***



Geisy Valente

REALTOR | Elite International Realty
Office: 305.940.6611
Cell: +1 (786) 536.8751
✉ geisy@eliteinternational.com



Daniel Ickowicz

CEO | Elite International Realty
Office: 305.940.6611
Cell: +1 (786) 443.4424
✉ daniel@eliteinternational.com

Further details are available upon direct inquiry.



Precision. Trust. 30 Years of Excellence

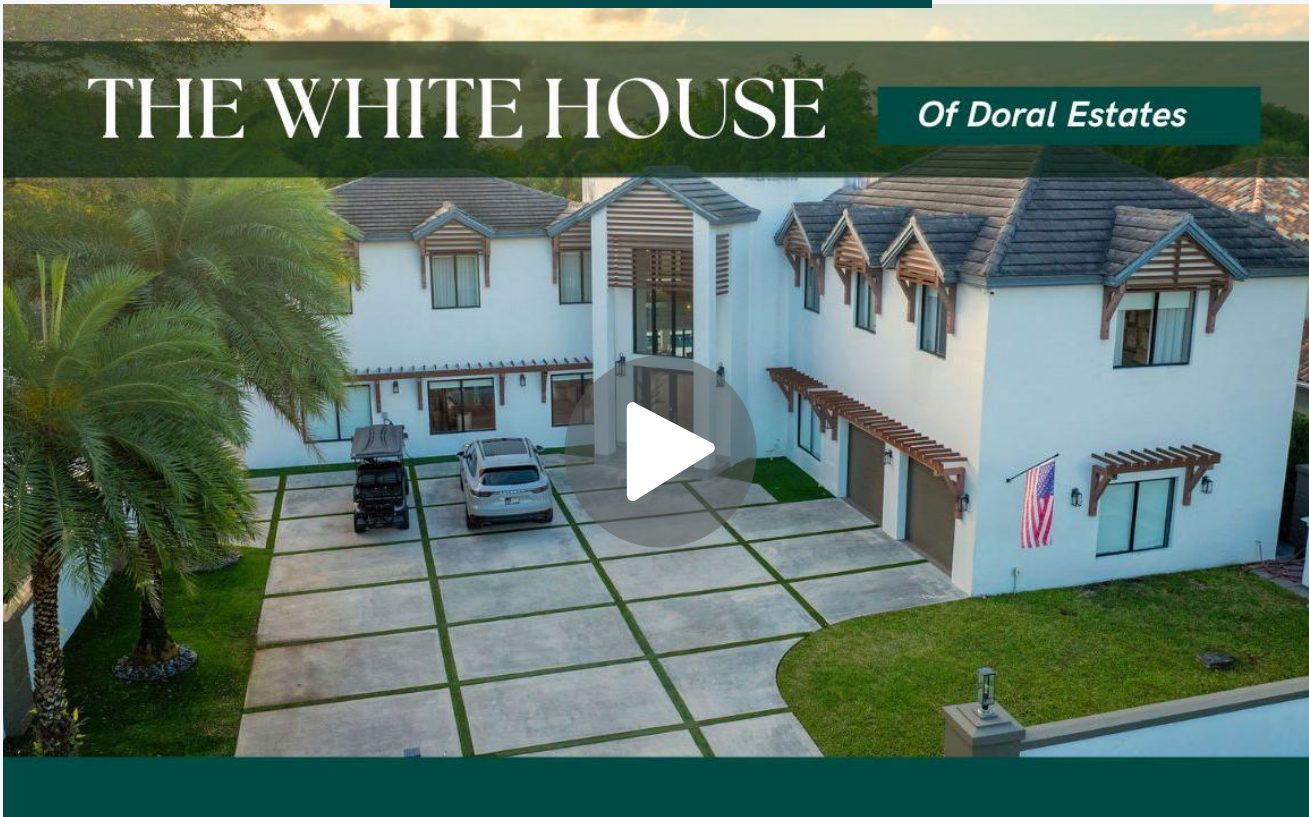
Specializing in high-value residential assets for over three decades, Elite International Realty provides sophisticated market intelligence and a global network. We ensure absolute confidentiality and technical mastery in every transaction, securing the long-term value of your real estate portfolio

THE FILM SETS THE SCENE.
THE VISIT CAPTURES THE SOUL.

WATCH THE FILM

THE WHITE HOUSE

Of Doral Estates



You've witnessed the lifestyle in motion. Now, experience the scale and silence firsthand.

Request your private appointment.

Private introductions only.
Full details, materials, and showings are released
exclusively after buyer qualification.



Geisy Valente

Unbranded edition provided as a professional courtesy for private client presentation only. Public dissemination or media publication is strictly prohibited.