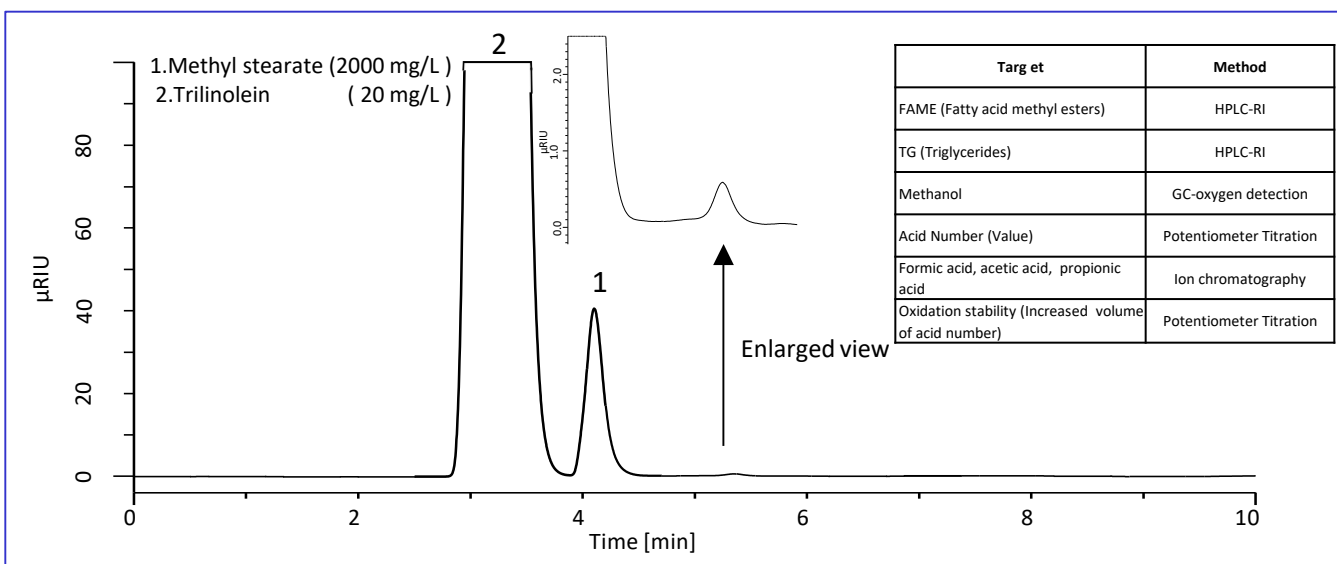


In Japan, Agency for Natural Resources and Energy is considering to amend the law “Enforcement Regulation of controlling the quality of volatile oils”, which is to strictly control the quality of biodiesel fuels (BDF).

As a result, a regulation of the compounds shown in the right table has been added. FAME (Fatty acid methyl esters) and TG (Triglycerides) in BDF are required to be analyzed using the HPLC method. Concentrations of FAME and TG are obtained from their calibration curves that have been already prepared using methyl stearate and trilinolein as their standard, respectively.

(K.Suzuki)

## A Chromatogram Obtained from Standard Solution



### Conditions

**Column** : Inertsil SIL-100A  
(5 $\mu$ m, 250 x 4.6 mm I.D.)

**Column Cat. No.** : 5020-01712

**Eluents** : A) *n*-Hexane  
B) 2-Propanol A/B = 996 / 4 v/v

**Flow rate** : 1.0 mL/min

**Column Temp.** : 40 °C

**Detector** : RI

**Injection volume** : 10  $\mu$ L

### Column performance test

In the HPLC method, following requirements should be fulfilled.

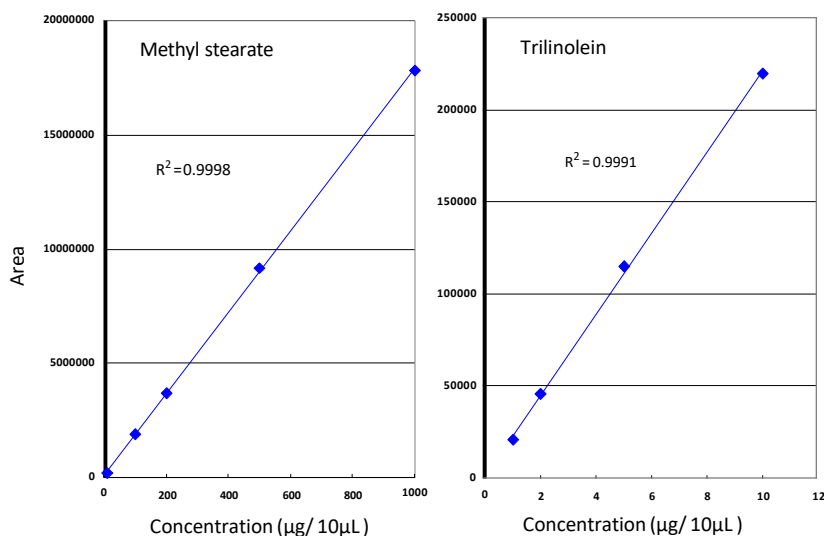
(Both values should be examined with 5  $\mu$ L injection.)

- The retention time of methyl stearate is more than 3.5 minutes.
- Resolution factor ( $R_s$ ) between the methyl stearate peak and trilinolein peak is more than 3.

### Results

Retention time of methyl stearate: **4.05 min**

Resolution factor: **4.7**

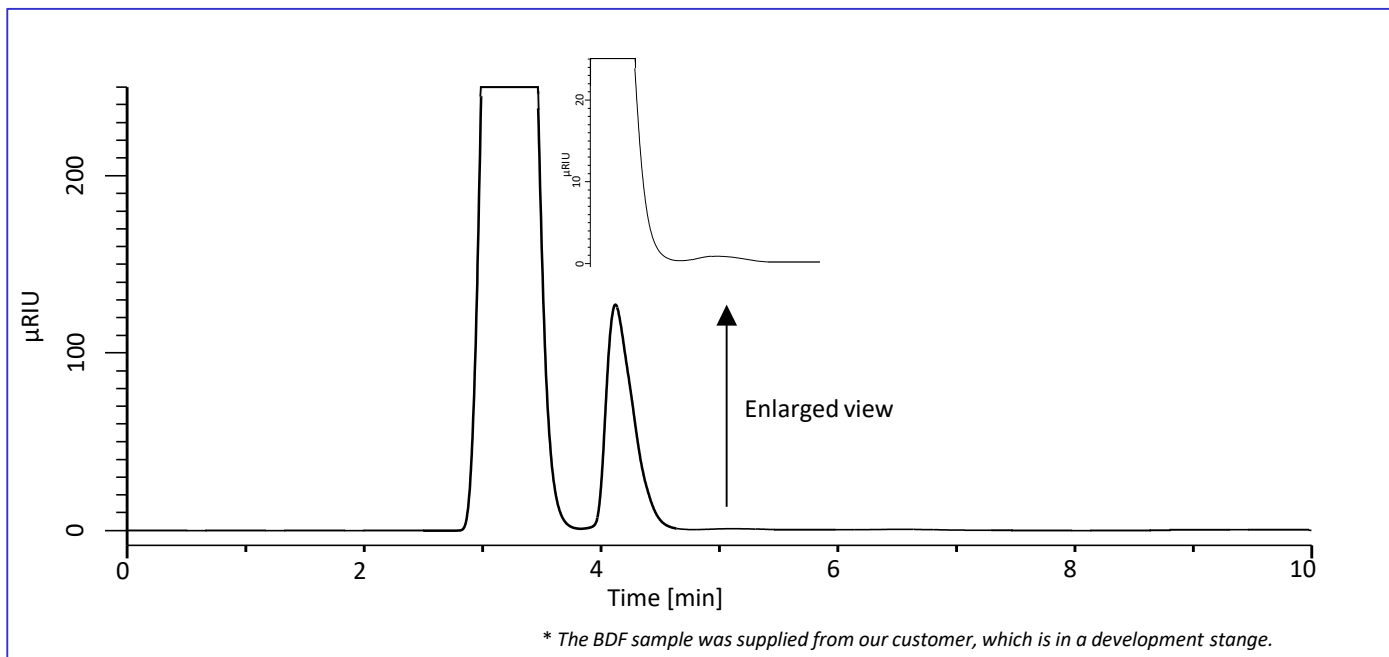


Sample No.	Concentration ( $\mu$ g/10 $\mu$ L)	
	Methyl stearate	Trilinolein
1	10	-
2	100	1
3	200	2
4	500	5
5	1000	10

Calibration curves and concentrations of standard solutions

## A chromatogram obtained from BDF

The sample solution was injected after filtration using a 0.45  $\mu\text{m}$  membrane filter and dilution with light oil.



GL Sciences disclaims any and all responsibility for any injury or damage which may be caused by this data directly or indirectly. We reserve the right to amend this information or data at any time and without any prior announcement.

### **GL Sciences, Inc. Japan**

22-1 Nishishinjuku 6-Chome  
Shinjuku-ku, Tokyo,  
163-1130, Japan  
Phone: +81-3-5323-6620  
Fax: +81-3-5323-6621  
Email: [world@glsc.co.jp](mailto:world@glsc.co.jp)  
Web: [www.glsciences.com](http://www.glsciences.com)

### **GL Sciences B.V.**

De Sleutel 9  
5652 AS Eindhoven  
The Netherlands  
Phone: +31 (0)40 254 95 31  
Email: [info@glsciences.eu](mailto:info@glsciences.eu)  
Web: [www.glsciences.eu](http://www.glsciences.eu)

### **GL Sciences (ShangHai) Ltd.**

Tower B, Room 2003,  
Far East International Plaza,  
NO,317 Xianxia Road,  
Changning District.  
Shanghai, China P.C. 200032  
Phone: +86 (0)21-6278-2272  
Email: [contact@glsciences.com.cn](mailto:contact@glsciences.com.cn)  
Web: [www.glsciences.com.cn](http://www.glsciences.com.cn)

### **GL Sciences, Inc. USA**

4733 Torrance Blvd. Suite 255  
Torrance, CA 90503  
Phone: 310-265-4424  
Fax: 310-265-4425  
Email: [info@glsciencesinc.com](mailto:info@glsciencesinc.com)  
Web: [www.glsciencesinc.com](http://www.glsciencesinc.com)

### **International Distributors**

Visit our Website at:

<https://www.glsciences.com/company/distributor.html>