

# **NILES BOLTON ASSOCIATES**

**Architecture  
Planning  
Design**



Camden Buckhead | Atlanta, GA



# FIRM OVERVIEW

Niles Bolton Associates



**1975**  
FOUNDED

**130+**  
STAFF

**OFFICES**  
ATLANTA, GA  
WASHINGTON, DC

**24**  
ACTIVE STATES

**#8**  
MULTIFAMILY  
RANKED BY BD+C

**#1**  
STUDENT HOUSING  
RANKED BY BD+C

# FIRM OVERVIEW

Niles Bolton Associates (NBA) is a 130-person firm providing architecture, interior design, landscape architecture, and urban planning services. Founded in 1975, NBA has completed projects in 49 states and 16 countries. With offices in Atlanta, Georgia and Alexandria, Virginia, NBA was named a Top 50 design firm in the U.S. by Building Design & Construction in 2024. Our major markets include multifamily residential, higher education, retail, corporate, and hospitality.

Our skill to understand our clients' needs and design to those requirements garners trust that keeps clients coming back. For Niles Bolton Associates, success is measured not only with design awards, but by our ability to design an appropriate response to program and budget requirements, by acceptance in the market served, and by the ongoing financial reward for our clients. Throughout our nearly 50 year history we have developed a strong sense of regionalism in our design methodology.

## SELECT DEVELOPER CLIENTS

Ambling Property

American Campus Communities

Atlantica Properties

AvalonBay Communities

Balfour Beatty Communities

Bozzuto

Brand Properties

BRP Development Corp.

CA Ventures

Camden Development

Capital City Real Estate

Capstone Communities

Clark Realty Capital

Core Spaces

Crescent Communities

Cortland Partners

Dinerstein Companies

Fairfield Residential

Finger Companies

Forestar Group

Gables Residential

Grayco Partners

Highpoint Residential

Hines

Jefferson Apartment Group

JLB Partners

Kaplan Residential

Kassinger Development Group

Landmark Properties

LIV Development

LV Collective

Middleburg Communities

Noble Investment Group

Novare Goup

Oldham Goodwin Group

O'Neill Properties

RISE Development

Roseland Property

The Benoit Group

The Feldman Companies

The Goldenberg Group

Third & Urban

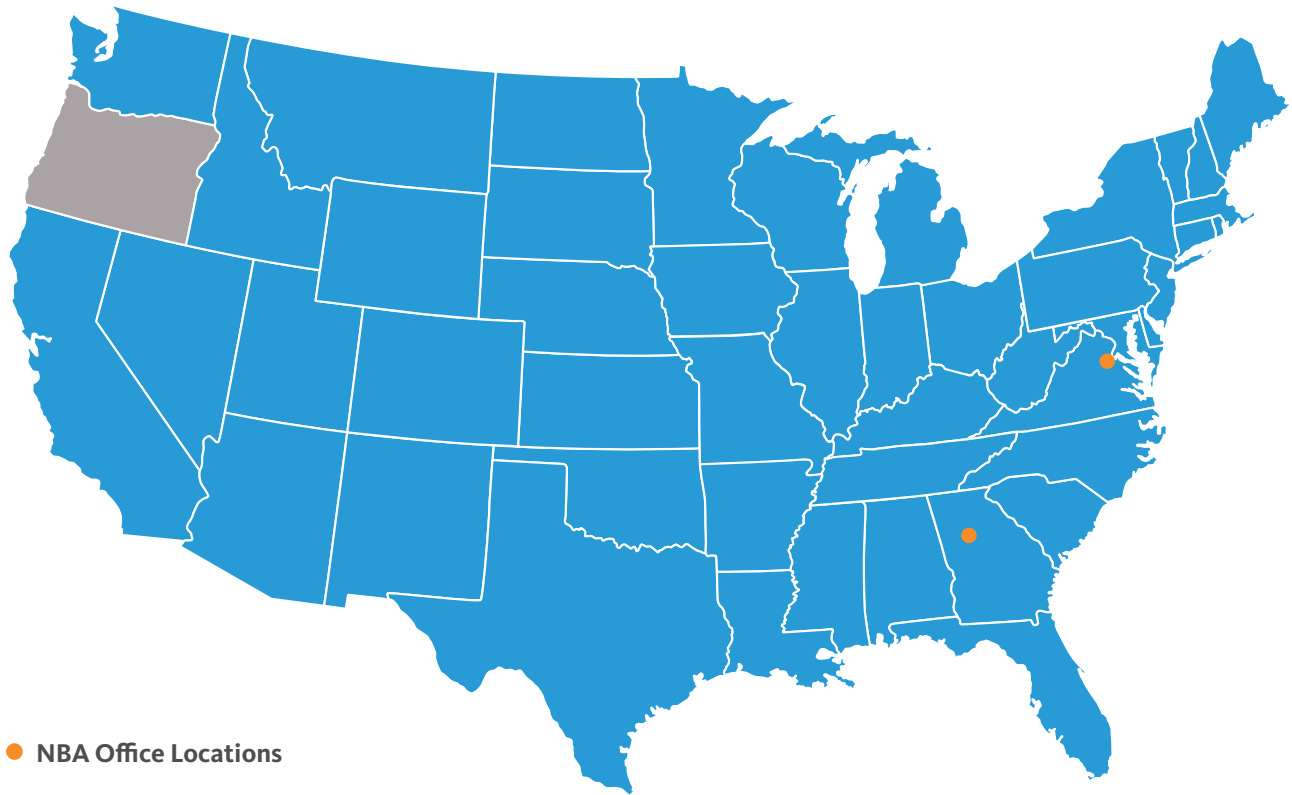
Trammell Crow Residential

Vista Residential Partners

Willow Bridge Property Co.



# NATIONWIDE EXPERIENCE



## NOTABLE FACTS

- Ranked in the Top 50 architectural firms by Building Design + Construction magazine in 2024
- Based on multifamily design fees, the firm ranks 8th among U.S. firms according to Building Design + Construction magazine in 2024
- Designed more than 750,000 dwelling units during our 49 year history
- NBA has designed 11 million sustainable square feet of multifamily space (LEED, Earthcraft, SPiRiT, EnergyStar)
- Designed the nation's first LEED multi-family apartment community, Blair Towns, in 2003
- 16 Neiman Marcus specialty stores across the country including, San Francisco, Las Vegas, Honolulu, Miami, Palm Beach, Tampa, Orlando, Plano, Scottsdale and Oakland, California
- Designed approximately 120 golf clubhouses across the world, including 15 PGA Tour venues and renovations at Augusta National
- Designed approximately 78,500+ university student beds on 75 college and university campuses
- Designed transit and aviation facilities in cities across the U.S., including Los Angeles, Atlanta, Albany, Honolulu, Houston, Nashville, Raleigh/Durham and Miami



Trellis House | Washington, DC





# MEET THE TEAM

Atlanta + Washington, DC



**JEFF SMITH, AIA, LEED AP**  
PRESIDENT

- 39 years of experience, joined NBA in 1986
- Registered architect in 17 states
- American Institute of Architects (AIA)
- Society of College and University Planning (SCUP)
- Design-Build Institute of America (DBIA)
- B.Arch: University of Notre Dame



**CANNON REYNOLDS, AIA, LEED AP**  
MANAGING DIRECTOR

- 28 years of experience, joined NBA in 2000
- Registered architect in 18 states
- American Institute of Architects (AIA)
- Urban Land Institute (ULI)
- Young Presidents Organization (YPO)
- Georgia Tech College of Design Advisory Board
- M.Arch & BS Architecture: Georgia Institute of Tech.



**STEPHANIE KIRKPATRICK, IIDA, LEED AP**  
PRINCIPAL, DIRECTOR OF INTERIOR DESIGN

- 39 years of experience, NBA 1992-1997; 2006 - present
- International Interior Design Association (IIDA)
- American Society of Interior Designers (ASID)
- National Council for Interior Design Qualification (NCIDQ)
- Commercial Real Estate Women (CREW)
- United States Green Building Council
- BS Interior Design: Virginia Tech



**CHRIS FORTNER, PLA**  
PRINCIPAL, DIRECTOR OF LANDSCAPE ARCH.

- 28 years of experience, joined NBA in 2000
  - Registered landscape architect in 21 states
  - American Society of Landscape Architects (ASLA)
  - Green Roofs for Healthy Cities
  - Council of Landscape Architecture Registration Boards
  - BA Landscape Architecture, University of Georgia
-

# 130+ TEAM MEMBERS:



# WE'RE ALWAYS ON THE LOOKOUT FOR EXCEPTIONALLY TALENTED PEOPLE.

Qualified and interested candidates should submit your resume and portfolio with a cover letter to [careers@nilesbolton.com](mailto:careers@nilesbolton.com). Learn more at [www.nilesbolton.com/careers](http://www.nilesbolton.com/careers).

## **BENEFITS INCLUDE:**

- Student loan contributions from NBA
- 401K matching
- 3 weeks paid time off (PTO)
- Hybrid schedules
- Financial wellness program
- Generous benefits package - medical, dental, vision, disability, life insurance

## **YOUNG PROFESSIONALS' FORUM**

- Opportunity for group learning, site visits & social events
- Dedicated Architectural Experience Program (AXP) coordinator
- Architectural Registration Exam (ARE), Landscape Architect Registration Examination (LARE), and NCIDQ study materials provided
- Reimburse 100% of passed ARE, LARE and NCIDQ exams + paid time off
- Design competitions
- Volunteer opportunities

## **NILES BOLTON UNIVERSITY**

- In-house continuing education program
- Revit training
- 100+ AIA accredited classes offered annually
- Roundtable discussions
- Risk management seminars





**WE WELCOME THE CURIOUS,  
THE IMAGINATIVE AND  
THE TALENTED.**



WHISTLER

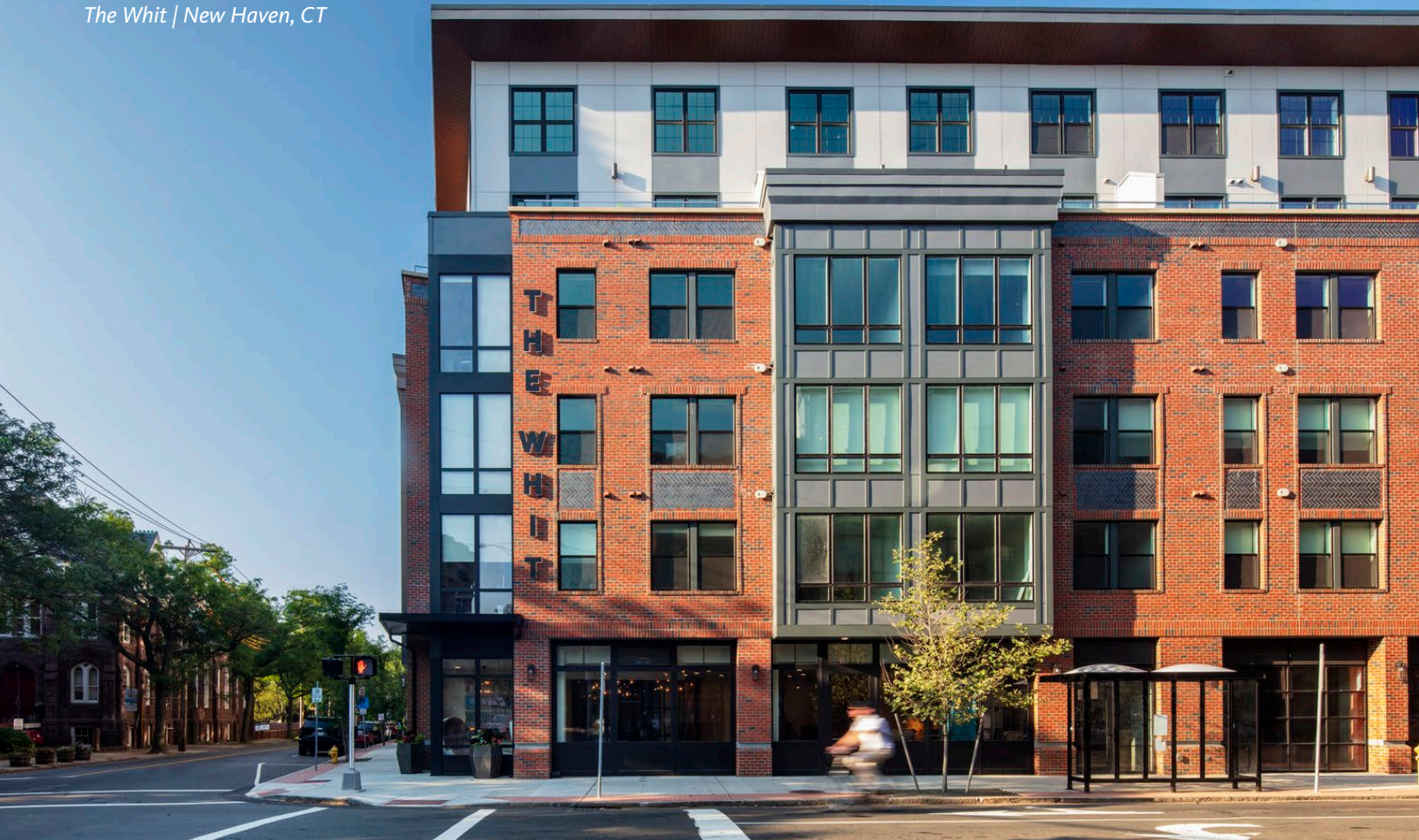
859

Whistler | Atlanta, GA



# PROJECT EXPERIENCE

Niles Bolton Associates



# MULTIFAMILY + MIXED-USE

With extensive experience encompassing everything from single family homes to luxury high rise developments, Niles Bolton Associates brings to our clients a remarkable understanding of the planning, design, market and construction issues specific to residential design. As one of the nation's leading multifamily housing design firms, we have designed more than 750,000 dwelling units in a variety of housing types. Our multifamily housing projects throughout the United States and abroad give us an international design perspective and enable us to respond in the appropriate regional architectural vernacular. NBA enjoys national, regional, and local recognition with design awards in areas such as best attached home, best apartment community, distinguished design, outstanding development, and best landscape design. Our multidisciplinary practice provides us with the ability to develop design solutions that address the total project from initial concept to final finishes.

---

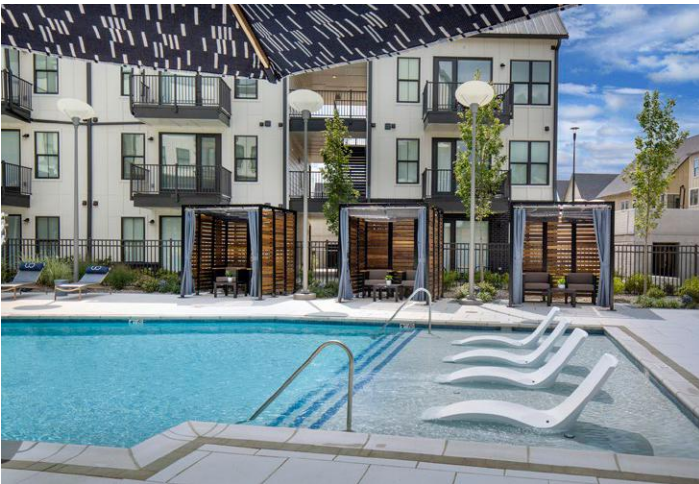




**ASPIRE GULCH**  
NASHVILLE, TENNESSEE



**THE MAVEN**  
SUWANEE, GEORGIA



**UPTON OXMOOR**  
LOUISVILLE, KENTUCKY



**RESIDENCES AT THE PASS**  
CHARLOTTE, NORTH CAROLINA



**THE WHIT**  
NEW HAVEN, CONNECTICUT



**LORIA ANSLEY**  
ATLANTA, GEORGIA



**OLMSTED**  
CHAMBLEE, GEORGIA



**THE GOAT FARM APARTMENTS**  
ATLANTA, GEORGIA



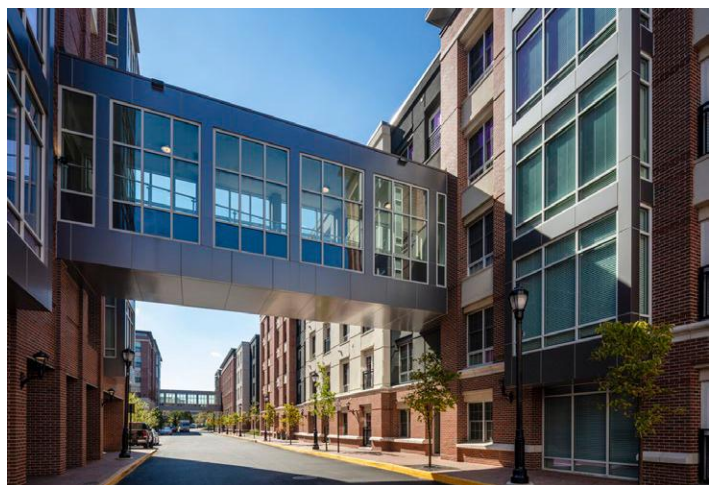
**THE SOUND AT PENNINGTON BEND**  
NASHVILLE, TENNESSEE



**THE DEMPSEY**  
MADISON, ALABAMA



**NOVEL BLANDTOWN**  
ATLANTA, GEORGIA



**THE HARPER AT HARMON MEADOW**  
SECAUCUS, NEW JERSEY



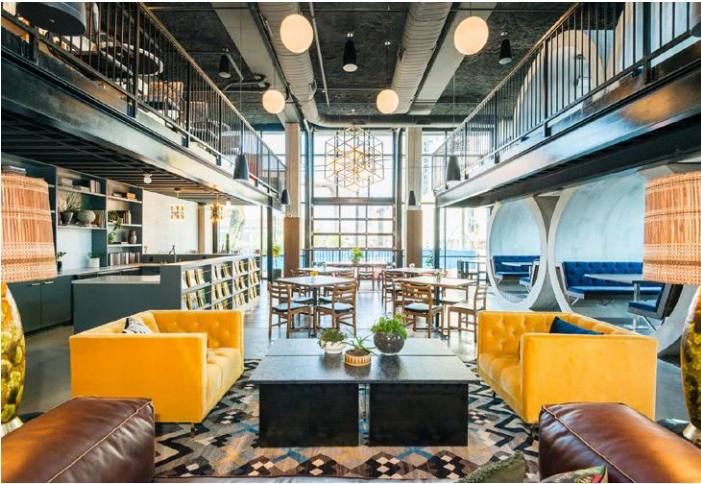
**THE BIRCH AT 51 WASHINGTON**  
CONSHOHOCKEN, PENNSYLVANIA



**TRACE MIDTOWN**  
ATLANTA, GEORGIA



**THE CORE STATION YARDS**  
RONKONKOMA, NEW YORK



**OLMSTED**  
NASHVILLE, TENNESSEE



**340 EAST PACES FERRY**  
ATLANTA, GEORGIA



**THE ASHLEY GABLES BUCKHEAD**  
ATLANTA, GEORGIA



# THE LEAF

NEW ROCHELLE, NEW YORK



## SERVICES

Architecture, Interior Design,  
Landscape Architecture

## CLIENT

BRP Development Corp.

## SCOPE / COMPONENTS

477 residential units | 26-story tower

619,000 sf gross building area

20,000 sf religious space

2,000 sf of retail and civic office space

429 structured parking spaces served by valet system

Amenities include expansive fitness center, clubroom with terraced courtyards, coworking space, level 26 skylounge with harbor views, rooftop swimming pool and dog run, and full height exterior mural

*Under construction, expected completion Q2 2025*



# TRELLIS HOUSE

WASHINGTON, DC



---

## SERVICES

Architecture, Interior Design,  
Landscape Architecture

---

## CLIENT

RISE Real Estate Company

---

## SCOPE / COMPONENTS

Mixed-use community adjacent to Howard  
University

1.1 acre

319 units; 371 beds

Two level podium parking with 143 parking spaces

7,600 sf retail space; 1,000 sf office space

Sky terrace on 6th Level

---

## SUSTAINABILITY

LEED Platinum





TRELLIS HOUSE

2323

Sherman #  
2300

15  
DC





# CAMDEN BUCKHEAD

ATLANTA, GEORGIA



## SERVICES

Architecture, Masterplanning

## CLIENT

Camden Development, Inc.

## SCOPE / COMPONENTS

366 units; 769,923 gsf

Bldg 400 - 9 residential levels over 2 levels of parking

Bldg 500 - 8 residential levels over 3 levels of parking

Townhome and loft style units w/ double height living spaces and private roof terraces

Amenities include: dog spa, 2 clubrooms, 2 fitness centers, conference room, 2 swimming pools

National Green Building Standard, Certified Bronze

## AWARDS

2024 ASID Georgia Design Excellence Awards,  
Contract - Multifamily, Silver



# NOVEL MIDTOWN

ATLANTA, GEORGIA



---

## SERVICES

Architecture

---

## CLIENT

Crescent Communities

---

## SCOPE / COMPONENTS

Mixed-Use development with adjacent office tower (by others) over shared parking podium with 814 spaces

340 units; 412,000 building gsf

14 stories (12 over 2 + 5 level parking podium below grade)

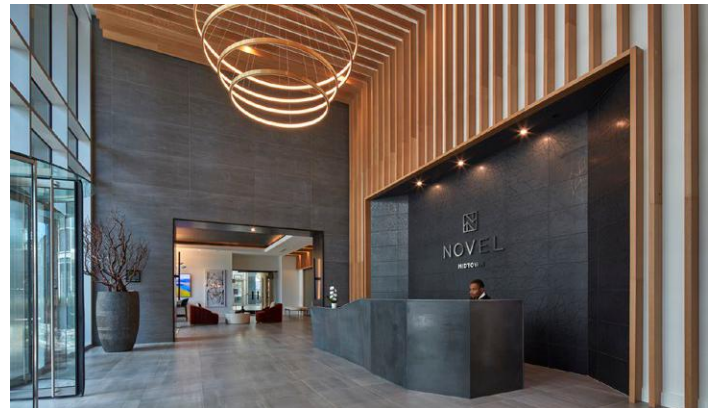
Amenities: co-working, fitness center with yoga room, resort spa, infinity-edge pool, and indoor/outdoor skylounge

5,000 sf retail: Land of a Thousand Hills coffee shop and restaurant space

---

## SUSTAINABILITY / WELLNESS

Fitwel Certified





NOVELTY

MIDTOWN

14<sup>TH</sup> SPRING





# OLIVE & WOOSTER

NEW HAVEN, CONNECTICUT



## SERVICES

Architecture, Interior Design, Landscape Architecture

## CLIENT

Epimoni + Adam America Real Estate

## SCOPE / COMPONENTS

299 units; 557 beds; 408,000 gsf; 6 stories; 2.59 acres

One-level structured parking at grade (201 spaces)

Mix of studio, 1, 2, 3 and 4 bedrooms

4, 3-bedroom townhome units with street access along Fair Street and Union Street

Amenities include: 7,655 sf of retail, three lobbies, clubroom with bar and lounge area, two courtyards, swimming pool and coworking space with a bar

## AWARDS

2024 ASID Georgia Design Excellence Awards, Contract - Multifamily, Silver





# SENIOR HOUSING

With knowledge of various types of senior housing design, NBA offers innovative solutions across a broad spectrum of care environments to our clients. The firms' expertise spans active adult communities, independent living, assisted living, skilled nursing, and memory care facilities across the Southeast and Mid-Atlantic regions. With a deep understanding of the unique needs of aging populations, NBA has successfully designed spaces that promote comfort, safety, and well-being, while integrating functional, aesthetic, and sustainable design elements. Our commitment to enhancing the quality of life for seniors is evident in our completed projects which promote thoughtful, resident-centered designs that prioritize both accessibility and a sense of community.

---



**LONGLEAF AT LIBERTY PARK**  
VESTAVIA HILLS, ALABAMA



**RENAISSANCE AT GARDEN WALK**  
RIVERDALE, GEORGIA



**CAROLINA PRESERVE AT AMBERLY**  
CARY, NORTH CAROLINA



**BRANDYWINE SENIOR LIVING**  
POTOMAC, MARYLAND



**THE RESERVE AT FAIRHOPE**  
FAIRHOPE, ALABAMA



**DISCOVERY PLACE DAYTONA BEACH**  
DAYTONA BEACH, FLORIDA



BRANDYWINE LIVING  
at The Mansions





# BRANDYWINE SENIOR LIVING

ALEXANDRIA, VIRGINIA



---

## SERVICES

Architecture, Landscape Architecture  
Interior Architecture

---

## CLIENT

Brandywine Senior Living

---

## SCOPE / COMPONENTS

116 unit Assisted Living Facility

118,879 sf; 44,667 sf of podium parking

12,000 sf retail space

Amenities include therapy pool, fitness & rehab center, beauty salon, music room & parlor, pub, main dining room with full service kitchen, library, wellness center, bistro, theater, escapades, & dining rooms

Type IA construction

---

## SUSTAINABILITY

LEED Silver

---



*The Suites at Third | Champaign, IL*



# STUDENT HOUSING

For more than 45 years, NBA has been crafting the environment for college students to live and learn across the country and is currently **ranked #1 in student housing by Building Design + Construction**. We have designed approximately 57,000 student housing beds near college and university campuses - all with different goals, visions and budgets. Through our experience in student housing design, we know that housing facilities must be inviting and livable as well as architecturally appropriate. Our experience in commercial, housing and hospitality design gives us insight into many of the same issues that impact student housing development including unit/room configuration, food service, parking, access and security, curb appeal, and building maintenance.

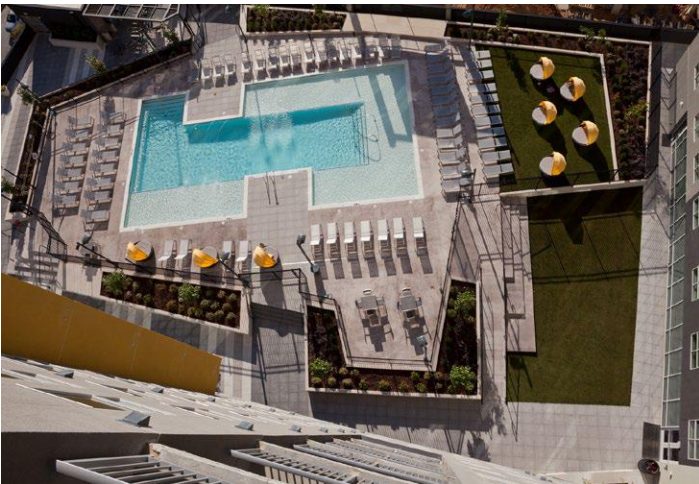
---



**RAMBLER ATLANTA**  
ATLANTA, GEORGIA



**IDENTITY**  
BERKELEY, CALIFORNIA



**UH MIDTOWN**  
ATLANTA, GEORGIA



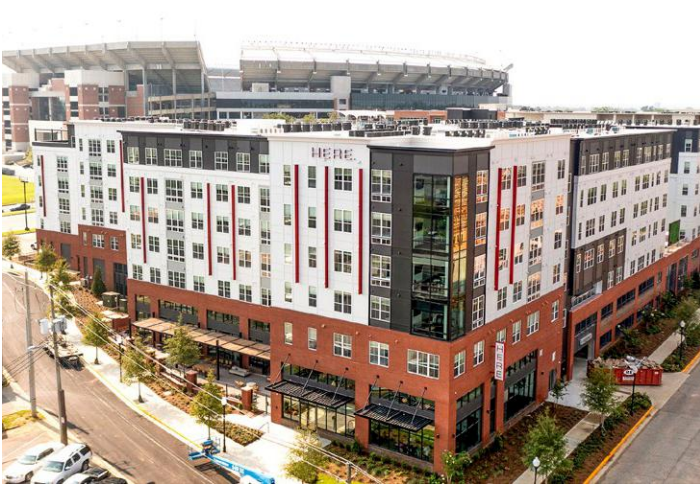
**THE STANDARD AT ATLANTA**  
ATLANTA, GEORGIA



**THE HENRY**  
TAMPA, FLORIDA



**THE FLATS ON UNIVERSITY**  
FAIRFAX, VIRGINIA



**HERE TUSCALOOSA**  
TUSCALOOSA, ALABAMA



**191 COLLEGE**  
AUBURN, ALABAMA



**HERE RENO**  
RENO, NEVADA



**THE MARK AT ATHENS**  
ATHENS, GEORGIA



**RISE AT WEST CAMPUS**  
AUSTIN, TEXAS



**WILDWOOD BATON ROUGE**  
BATON ROUGE, LOUISIANA



**320 WEST MAG**  
AUBURN, ALABAMA



**THE MAIN ON UNIVERSITY**  
FAIRFAX, VIRGINIA



**SKYVUE**  
PITTSBURGH, PENNSYLVANIA



**THE PLAZA ON UNIVERSITY**  
ORLANDO, FLORIDA



**NOVU FIU**  
SWEETWATER, FLORIDA



**RAMBLER ATHENS**  
ATHENS, GEORGIA



MIDCITY LOFTS

848

# WHISTLER

ATLANTA, GEORGIA



## SERVICES

Architecture

## CLIENT

LV Collective

## SCOPE / COMPONENTS

25-story off-campus student housing in Midtown

284,839 gsf; 1,720 sf retail

168 units, 565 beds in studio, 1-, 2-, 3-, 4-, and 5-bedroom configurations

25 parking spaces

Expansive amenities including a roof top pool with panoramic views

## AWARDS

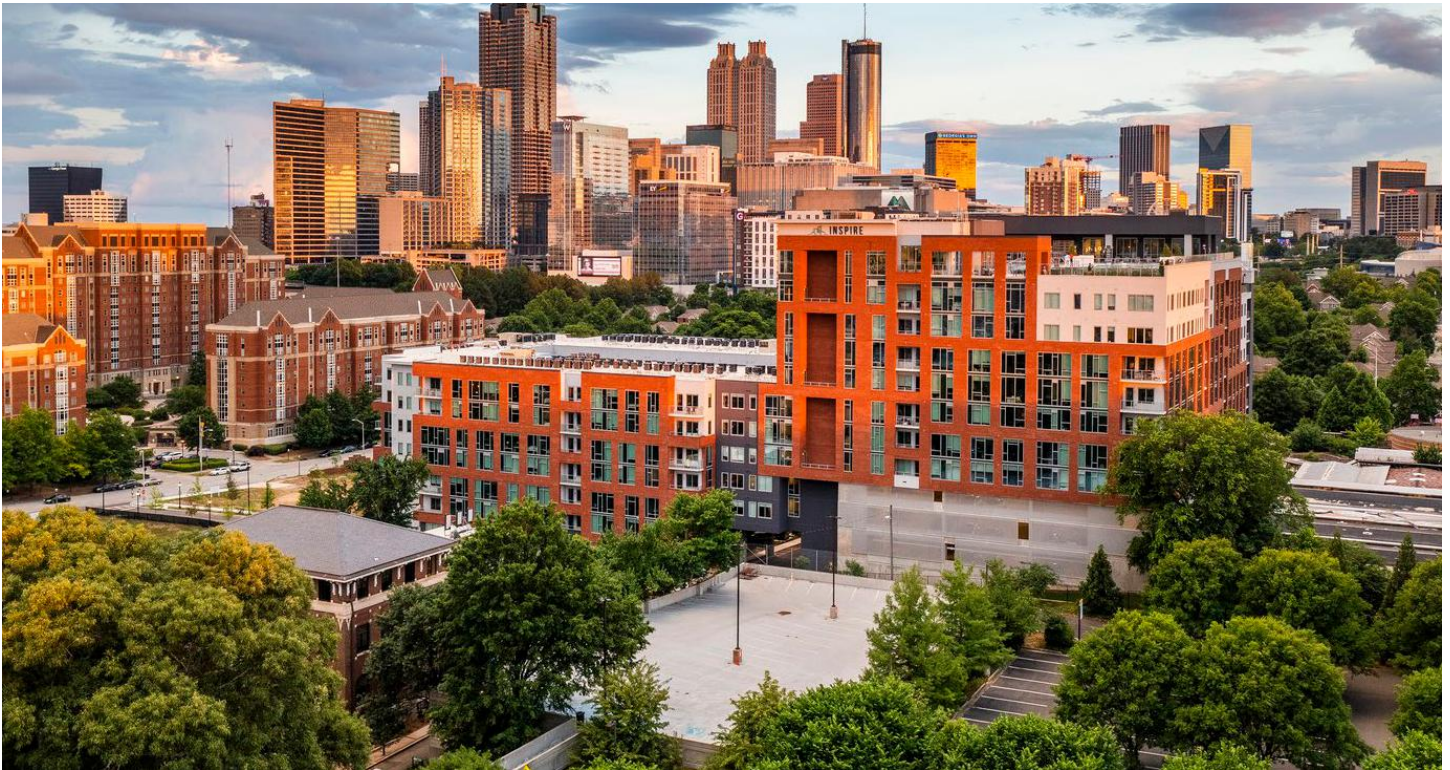
SHB '24 Innovator Awards, Best Architecture + Best New Development > 400 Beds

NAHB '23 Best in American Living Awards, Platinum & Best in South Atlantic Region



# INSPIRE

ATLANTA, GEORGIA



---

## SERVICES

Architecture, Interior Design

---

## CLIENT

Capstone Collegiate Communities

---

## SCOPE / COMPONENTS

530,000 gsf

239 units, 750 beds

3.5 acre site

Amenities include: Resident amenity lounge, study pods, clubhouse, fitness room, sky lounge and rooftop pool

280 podium parking spaces

---

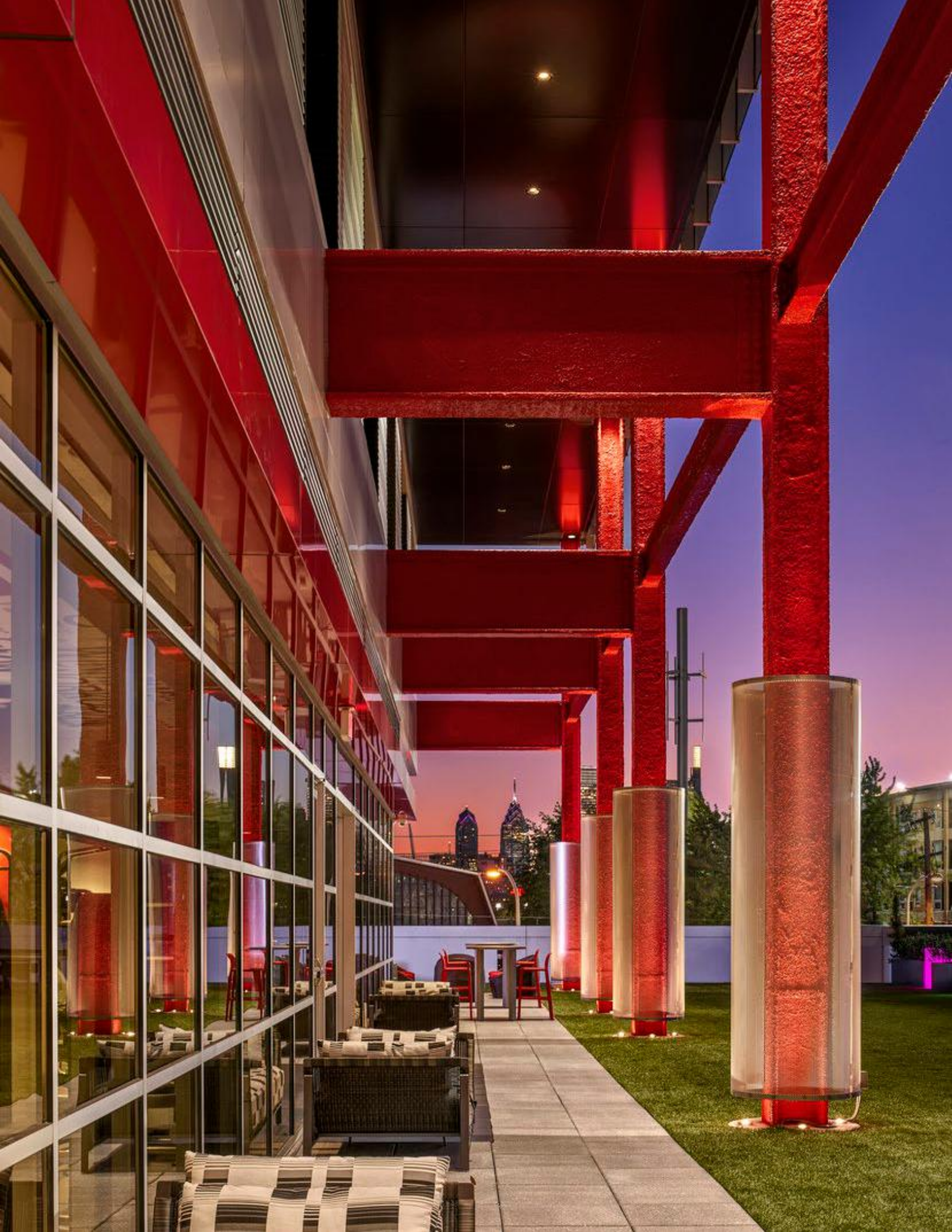
## AWARDS

MFE Grand Winner Award, Student Category  
NAHB Best in American Living Gold Award, Student









# VANTAGE

PHILADELPHIA, PENNSYLVANIA



## SERVICES

Architecture, Landscape Architecture,  
Space Planning, Masterplanning

## CLIENT

The Goldenberg Group

## SCOPE / COMPONENTS

368 units; 984 beds

Studio, 1, 2, 3, 4-bedroom configurations

471,000 building gsf

32,331 sf retail; 5,000 sf study lounge

12,622 sf wellness center and outdoor fitness area

## AWARDS

NAHB Best in American Living Gold Award,  
Multifamily, Large Scale Student Housing  
GBCA Construction Excellence Award, Best  
Residential, Mixed-Use, or Office Space Project, 2020



# TERRAZUL MIAMI

SWEETWATER, FLORIDA



## SERVICES

Architecture, Interior Design, Landscape Architecture

## CLIENT

Adam America Real Estate

## SCOPE / COMPONENTS

Mixed-use student housing adjacent to Florida International University

Project will be built in 2 phases:

22-story residential tower with 836,755 gsf

652 spaces in 6 levels of structured parking

932 units, 1,201 beds

15,500 sf retail

21,555 sf amenities which include: leasing office, dog wash, fitness center, clubroom, pool deck, 40K courtyard, outdoor kitchen area, roof top dog run, study spaces, and rooftop terrace







# HIGHER EDUCATION

As the nation's leader in student housing design, NBA has a proven track record in planning and design for a wide range of educational and institutional clients. We have designed approximately 78,000+ student housing beds on more than 75 colleges and school campuses. Solving issues of specialized use, maintenance, security, and building efficiency for student housing communities is part of our daily practice. We understand project schedules, budget constraints, and the important function that housing plays on a campus environment. We also have the sensitivity to design educational environments that are specifically tuned to the unique needs of the institution.

---



**NEW JERSEY INSTITUTE OF TECH, MAPLE HALL**  
NEWARK, NEW JERSEY



**AUBURN UNIVERSITY, NEW RESIDENCE HALL**  
AUBURN, ALABAMA



**NEW JERSEY INSTITUTE OF TECH, OAK HALL**  
NEWARK, NEW JERSEY



**RUTGERS UNIVERSITY, B.E.S.T. HALL**  
PISCATAWAY, NEW JERSEY



**CALIFORNIA POLYTECHNIC STATE UNIV.**  
SAN LUIS OBISPO, CALIFORNIA



**LOUISIANA STATE UNIVERSITY**  
BATON ROUGE, LOUISIANA

# APPALACHIAN STATE UNIVERSITY

BOONE, NORTH CAROLINA



## SERVICES

Architecture, Interior Design, Landscape Architecture

## CLIENT

RISE Real Estate Company

## SCOPE / COMPONENTS

On-campus 14-acre student housing community

Four residential buildings, 597,003 gsf

662 units / 2,299 beds

Parking Deck (478 spaces) - opened August 2019

Phase I: 912 beds, opened August 2020

Phase 2: 640 beds, opened August 2021

Phase 3: 747 beds, opened August 2022

## AWARDS

SHB 2023 Innovator Award, Best Public/Private Partnership









# UNIVERSITY OF TENNESSEE

KNOXVILLE, TENNESSEE



---

## SERVICES

Planning, Architecture, Landscape Architecture,  
Interior Design

---

## CLIENT

RISE Real Estate Company

---

## SCOPE / COMPONENTS

Four, 7-story residence halls; 675,854 total gsf  
2,982 total beds, 848 total units

### **Andy Holt Community (2025)**

788 beds, 229 units, 167,898 gsf

### **Caledonia Community (2025)**

1,166 beds, 324 units, 265,476 gsf

### **Lake Loudoun Community (2026)**

1,028 beds, 295 units, 242,480 gsf

Type IB Construction



---

*Currently under construction*

**NILES BOLTON ASSOCIATES**

# DISNEY FLAMINGO CROSSINGS VILLAGE

ORLANDO, FLORIDA



## SERVICES

Architecture, Interior Design, Landscape Architecture

## CLIENT

American Campus Communities

## SCOPE / COMPONENTS

Largest workforce housing in the country for students and trainees in Walt Disney World Resorts' internships programs

2,614 units / 10,440 beds

Surface parking for approx. 5,322 cars

Resort-style amenities include: multiple pools, basketball courts, sand volleyball, activity lawn, stage, indoor/outdoor gaming, study/media lounges and fitness centers.

East Campus - 51,596 sf community/education center

West Campus - 25,810 sf community center







# HOSPITALITY

Niles Bolton Associates has a proven track record in the hospitality market with capital budgeting, planning and design, development consulting, flag and branding compliance, and standards development. We understand the operational requirements of food and beverage service, banquets, housekeeping, facilities management, concierge activities, registration, and retail. Our talented staff has developed extensive resources of suppliers and consultants who share detailed knowledge of two-star to five-star projects. For any hospitality project to be designed successfully, the project must blend aesthetics and ambiance with functionality and resilience to daily use. NBA's careful planning minimizes long-term maintenance needs to maximize long-term viability while within budget and on schedule.

---



**TEMPO HOTEL BY HILTON**  
SAVANNAH, GEORGIA



**SPRINGHILL SUITES STOCKYARDS HOTEL**  
FORT WORTH, TEXAS



**SPRINGHILL SUITES RIVER VILLAGE**  
NEW BRAUNFELS, TEXAS



**RESIDENCE INN, CENTENNIAL OLYMPIC PARK**  
ATLANTA, GEORGIA



**RITZ CARLTON BEACH CLUB**  
SARASOTA, FLORIDA



**PROOF OF THE PUDDING**  
ATLANTA, GEORGIA

# ELEMENT VANDERBILT WEST END

NASHVILLE, TENNESSEE



---

## SERVICES

Architecture, Interior Design, Landscape Architecture

---

## CLIENT

Noble Investment Group

---

## SCOPE / COMPONENTS

175 keys

135,190 total sf; 10,111 sf ground floor retail

Amenities include pool deck, fitness room, 24 hr convenience store in lobby and rentable bikes

Parking is provided off-site; valet services provided for hotel operation

LEED Certified

---

## AWARDS

2021 ASID GA Design Excellence Award, Hospitality - Hotels & Resorts, Bronze







element  
BY NESTLÉ





# RETAIL

With a distinguished track record in retail design, NBA's experience extends from restaurants and free-standing buildings to large mixed-use developments where retail is seamlessly integrated into the ground level. The firm has designed 16 Neiman Marcus specialty stores across the country with locations in San Francisco, Las Vegas, Honolulu, Miami, Palm Beach, Tampa, Orlando, Plano, Scottsdale, and Oakland. Pulling from experience in mixed-use, multifamily, campus planning, and hospitality design, NBA excels in creating integrated, pedestrian-oriented developments that foster vibrant, walkable communities. By prioritizing accessibility, flow, and engaging storefronts, the firm ensures that the retail spaces we are designing not only attract customers but also enhance the overall urban experience, offering both functional and visually appealing environments.

---



**GLOVER PARK BREWERY**  
MARIETTA, GEORGIA



**TERRACE GREEN TOWN CENTER**  
RAPIDAN, VIRGINIA



**NEIMAN MARCUS ALA MOANA CENTER**  
HONOLULU, HAWAII



**THE GOODWYNN AT TOWN BROOKHAVEN**  
ATLANTA, GEORGIA



**STATION YARDS RETAIL**  
RONKONKOMA, NEW YORK



**OVME RETAIL PROTOTYPE**  
MULTIPLE LOCATIONS NATIONALLY

# NEIMAN MARCUS - BROADWAY PLAZA

WALNUT CREEK, CALIFORNIA



## SERVICES

Architecture, Landscape Architecture

## CLIENT

Neiman Marcus Group

## SCOPE / COMPONENTS

Two-story retail shell building with partial basement  
87,605 total sf

Height: 35 feet with glass light towers up to 49 feet

Three-story insulated window wall with layers of tinted and textured glass back-lit with LED lights

Two-story, Ned Kahn Custom Art installation:  
perforated aluminum fins moved by air currents

Exterior façade: stone veneer, insulated glass light towers, aluminum storefronts, show windows







# AVIATION

For over 49 years, the DYE | NBA aviation team has been designing award-winning facilities across the Continental United States, Hawaii, and into the Caribbean, Middle East and Asia. We have become a valued resource for transit authorities, municipalities, airports and general aviation operators who are addressing critical infrastructure needs through a range of transportation project types.

Our extensive experience in planning, permitting, operations, mixed-use development, and hospitality gives us a true understanding of how general aviation facilities can be critical drivers for the business community, economic development, and even in disaster response.

---



**ATLANTIC AVIATION PDK HANGARS L, K & Q**  
CHAMBLEE, GEORGIA



**FRANKLIN MOUNTAIN AVIATION**  
EL PASO, TEXAS



**BIG ISLAND JET CENTER**  
NORTH KONA, HAWAII



**CORPORATE FLIGHT DEPARTMENT**  
ATLANTA, GEORGIA



**SKY HARBOUR NATIONAL PROTOTYPE**  
MULTIPLE LOCATIONS NATIONALLY



**FTY CORPORATE HANGAR**  
ATLANTA, GEORGIA

# ATLANTIC AVIATION BNA

NASHVILLE, TENNESSEE



---

## SERVICES

Architecture, Interior Design,  
Landscape Architecture

---

## CLIENT

Atlantic Aviation

---

## SCOPE / COMPONENTS

11.42 acres of new site development

13,454 sf FBO building with spacious lobby, offices,  
conference space, pilot lounge, cafe, VIP lounge,  
men's and women's locker rooms, kitchen / back of  
house service area, and training room

25,330 sf hangar

Parking lot with 210 spaces

---

## SUSTAINABILITY

LEED Certified (pending)









# TRANSPORTATION

NBA has been designing transit facilities in cities across the U.S., including Los Angeles, Atlanta, Honolulu, Houston, Raleigh/Durham and Miami. We have become a valued resource for transit authorities and municipalities who are addressing critical urban issues through transit development.

One of primary reasons we are selected for transit projects is that we approach transportation design as a community-building opportunity. Our extensive experience in urban planning and mixed-use development gives us a true understanding of how transit design meets the needs of communities and how private developments can be transit-supportive to increase ridership and support smart growth.

---



**GREYHOUND ATLANTA TERMINAL**  
ATLANTA, GEORGIA



**ALBANY TRANSPORTATION CENTER**  
ALBANY, GEORGIA



**BIRMINGHAM INTERMODAL FACILITY**  
BIRMINGHAM, ALABAMA



**ATHENS MULTIMODAL TRANSPORTATION CENTER** ATLANTA, GEORGIA



**BECKLEY INTERMODAL GATEWAY**  
BECKLEY, WEST VIRGINIA



**VERMONT / SUNSET STATION**  
LOS ANGELES, CALIFORNIA



# NEWPORT NEWS MULTIMODAL STATION

NEWPORT NEWS, VIRGINIA



---

## SERVICES

Programming, Visioning, Master Planning  
Transit Oriented Development, Architecture

---

## CLIENT

City of Newport News, Virginia

---

## SCOPE / COMPONENTS

8,000 sf Amtrak Station and platform  
Adjacent to PHF International Airport  
Bus accommodations for Amtrak Thruway buses,  
Hampton Roads Transit, intercity bus, and airport  
shuttles  
Connection to future Light Rail Station  
Service Facility including Crew Base, Mechanical,  
service platform and layover yard



