

GONDWANA Rainforest Sanctuary South Bank - Brisbane QLD Australia



Gondwana Rainforest Sanctuary was established for Australian wildlife in the South Bank Parklands, in Brisbane, Queensland, Australia.

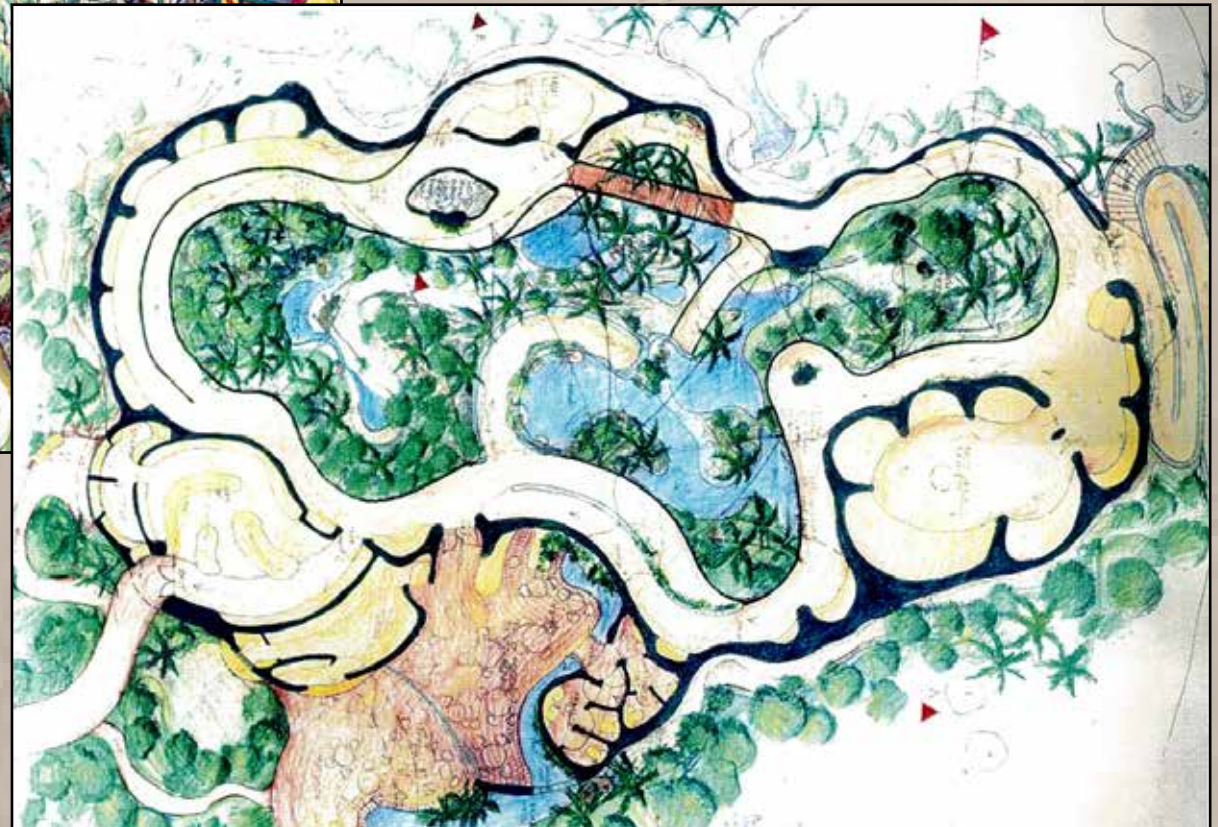
Established at the site of the huge bird aviary, the sanctuary featured many species of Australian birds, marsupials and reptiles. The marsupials included Koalas, Wallabies, Brushtail possums and Ringtail possums. Featured reptiles included Australian lizards and snakes.

At the same time as the wildlife sanctuary, there was a Butterfly House, as well as canals and bridges and launches.



By Natureworks Pty Ltd
Ph 07 3289 7555
info@natureworks.com.au
www.natureworks.com.au

GONDWANA RAINFOREST SANCTUARY



Hand Drawn Sketch of Gondwana
before construction



GONDWANA RAINFOREST SANCTUARY



Concept Art



Gondwana Land

“The land masses of the world were once aggregated into a single super continent called Pangea. Eventually Pangea separated into two parts, Laurasia to the north and Gondwana to the south. Gondwana comprised South America, South Africa, Madagascar, Antarctica, Australia and New Zealand. Gondwana started to break up into smaller continents about 180 million years ago. Fifty million years ago Australia broke away from Antarctica severing its last links with the other great lands of Gondwana.”

The Greening of Gondwana. Mary E White.

Philosophy behind Gondwana Project

Australia is the only country in the western world with its own rainforests. We should lead the world in educating the global community in the desperate need to conserve this dwindling resource.

Gondwana rainforest Sanctuary was built to highlight the need to conserve planet Earth and the importance of rainforests in our survival. It became the conservation focal point for Brisbane

GONDWANA RAINFOREST SANCTUARY



Concept Art Ideas - Showing a boat ride through the exhibit



Concept Art - Ideas for interior design

GONDWANA RAINFOREST SANCTUARY

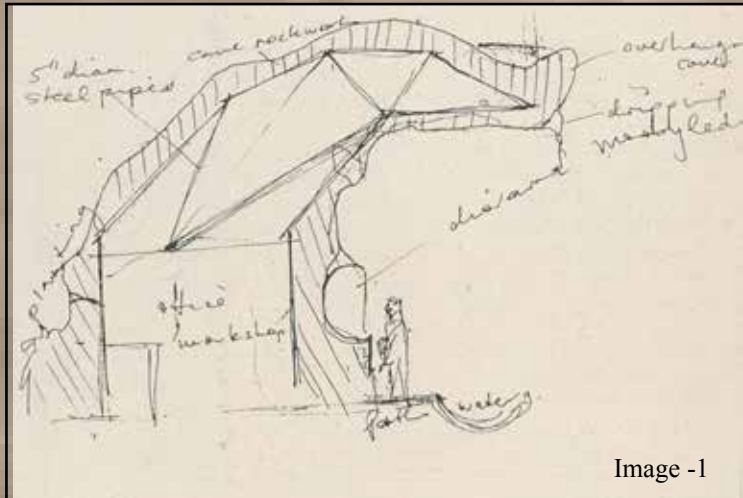


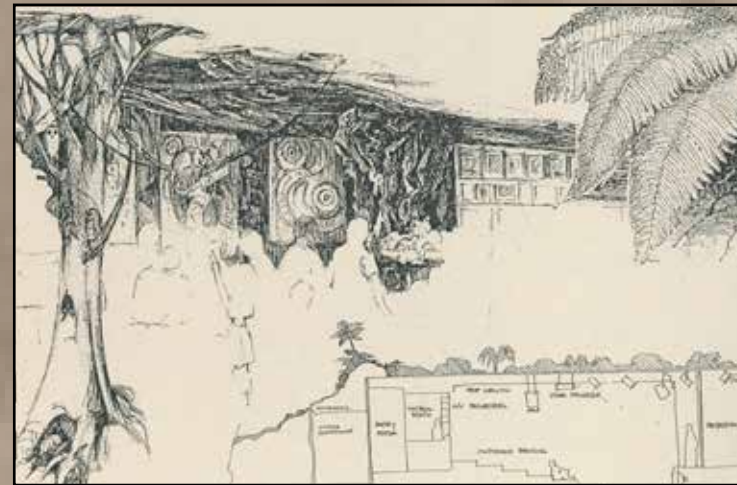
Image -1



Image -2

The Rainforest Theatrette - Concept Art

The Theatrette had the capacity to seat 100 people. It was created to be the educational focal point for the sanctuary providing an entertaining and learning experience, graphically illustrating the vast diversity and natural wonders view in the adjacent bush walk and rainforest and highlighting the global significance of rainforests.



Concept Art

The Aboriginal Sculpture Garden - Concept Art

This garden featured unique Aboriginal sculptures and artefacts depicting Aboriginal myths and legends set amid the splendour of a rich and lush tropical rainforest backdrop.

In addition to the Theatrette, the centre provided literature, posters, brochures and related print media to reinforce or expand upon concepts introduced through the main exhibit and the Theatrette presentations.

GONDWANA RAINFOREST SANCTUARY



Concept Art

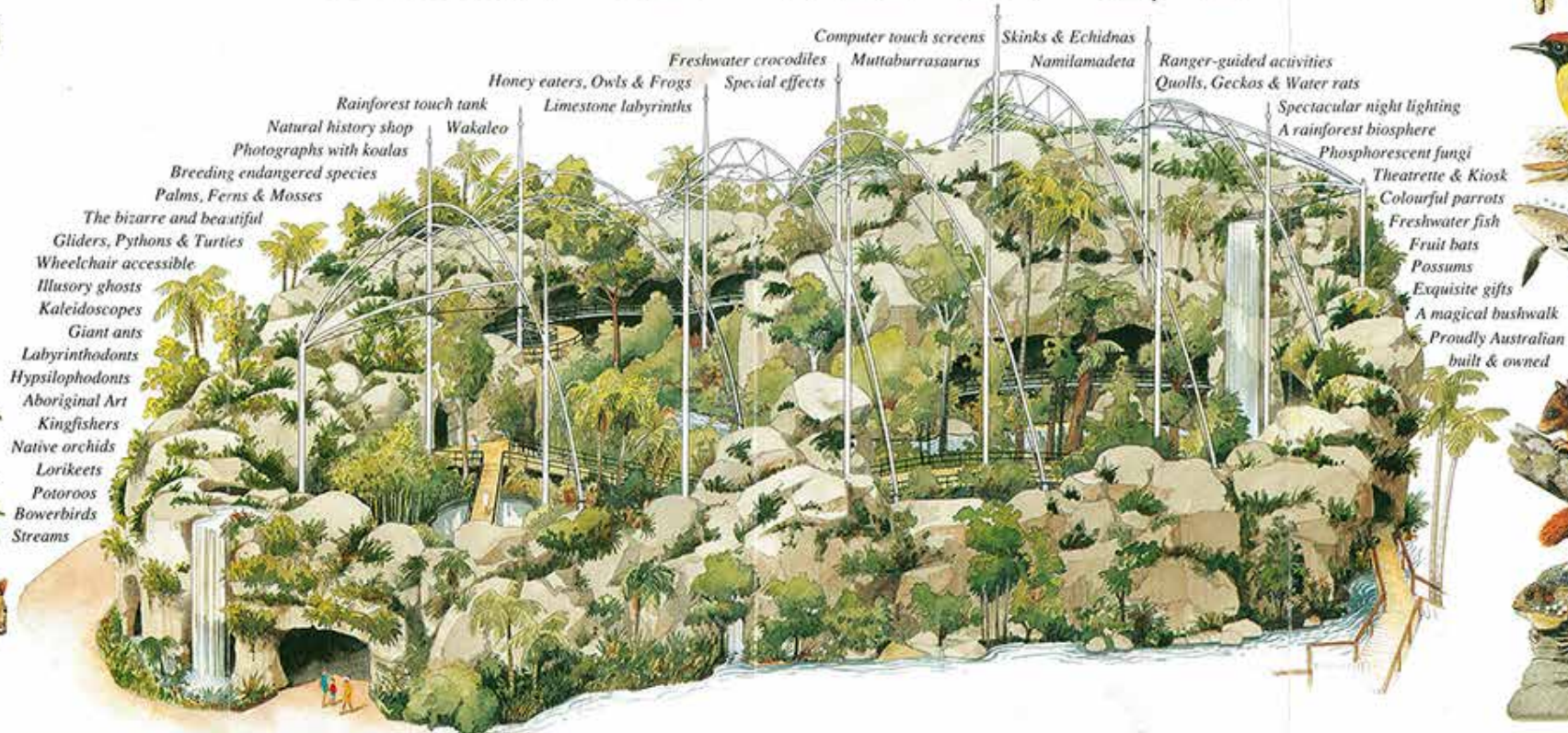
The Moss Garden Themed Restaurant - Concept Art

This complex fit-out a restaurant set in sandstone rock cave seating approximately 200 people.

The themed reception and dining areas consisted of a mixture of live and artificial native plant life and trees and biologically balanced waterfalls, streams and pond systems stocked with a variety of freshwater fish.

GONDWANA RAINFOREST SANCTUARY

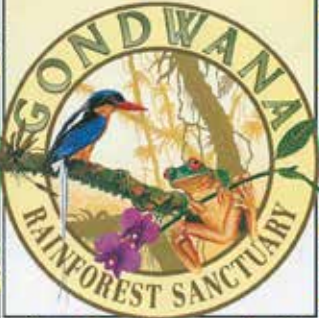
GONDWANA



Gondwana Brochure - Showing layout of site & inhabitants

GONDWANA RAINFOREST SANCTUARY

EXPERIENCE
A RAINFOREST
PARADISE
IN
BRISBANE CITY




State of the art technology
Try one of our environmental computer touch screen games and marvel at the special effects.

Gondwana after dark
For a totally unique experience, discover the nocturnal sights and sounds of Gondwana's night life. Fruit bats, gliders and many other nocturnal creatures spring to life after the sun sets.

You'll help the future of rainforests
A percentage of all gate takings will be made available to a range of conservation organisations and researchers to help rainforests and their species to survive in the twenty first century.





Discover the magic of a rainforest paradise in the heart of the city of Brisbane.

Gondwana Rainforest Sanctuary on Brisbane's South Bank unlocks the mysteries found only in the most pristine rainforests.

An abundance of native wildlife
Many free roaming birds, frogs, lizards and mammals live in this rich environment. Rangers introduce you to friendly creatures in our touch tank. Take the elevated boardwalk among luxuriant vines, ferns, orchids, and palms. Cross the bridge above the crocodile pool. Catch the spray of a 12m waterfall. And don't miss the koala and nocturnal houses.



Dinosaurs come alive
Journey back through time to Gondwana – the ancient landmass of which Australia was a part – where dinosaurs and megafauna ruled.



Open daily
10am to 10pm – gates close approx. 8.30pm
Recommended minimum visiting time 1–2 hours

Cost: \$9.50 adults, \$5.50 children 5–15 years, children under 5 years free, concessions \$7.00, families (2+2) \$25.00.

12 month Passports only \$30 adults, \$18 children, \$25 concession

Group discounts and Ranger-guided education programs available

South Brisbane railway station & bus stops close by

Gondwana Rainforest Sanctuary
South Bank Parklands, Brisbane City
Phone: (07) 846 4155 Fax: (07) 846 5225
(Effective 8.6.92 – subject to change without notice)

Printed on environmentally-friendly paper

Gondwana Advertisement Leaflet - Free on Entry to Gondwana Rainforest Sanctuary

GONDWANA RAINFOREST SANCTUARY

Construction

The sanctuary was housed within a unique synthetic basalt rock structure which created an open-aired climate controlled environment; and a sympathetic blending of the structure within the surrounding environment.

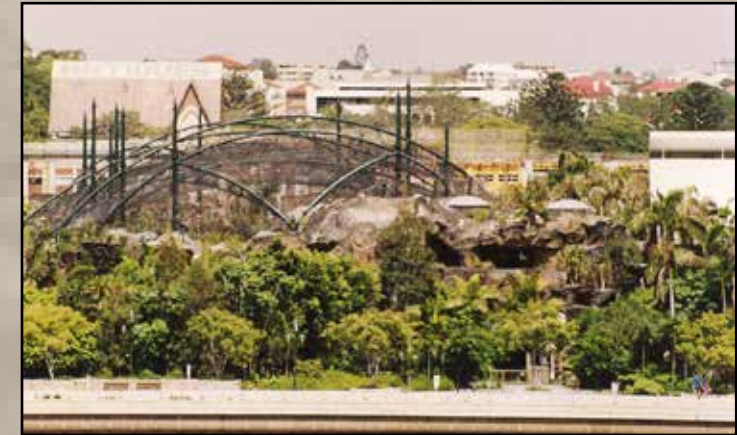
It was constructed of glass reinforced cement panels taken from moulds of real basalt over a steel frame, the structure was a hollow natural amphitheatre with the rainforest and amenities contained within.

Inside at ground level there were meandering streams, bridges walkways, tracks, waterfalls, interesting niches, crevices and display alcoves, overhanging ledges and caves.

The rock work was designed so that the sanctuary was viable day or night and the overhanging ledges meant that the all-weather display was even more spectacular if it rained.

The rock work stretched upwards to support a sprung carbon fibre rod tensioned roof frame carrying a black net and shade cloth open to the elements, a distinct departure from traditional glasshouse and cage structures.

The exterior of the rock structure was comprised of fissured valleys carrying the theme up onto the synthetic cliff faces which was complemented by rainforest flora. It was designed for guest to pause and escape the hectic modern world.



GONDWANA RAINFOREST SANCTUARY

Construction of Canopy



Construction of Gondwana



View of Gondwana from across the river

GONDWANA RAINFOREST SANCTUARY

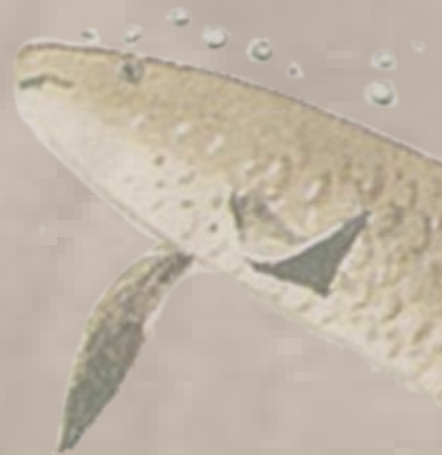


GONDWANA RAINFOREST SANCTUARY

Unlocking the secrets of the forest



The Theatrette had the capacity to seat 100 people. It was created to be the educational focal point for the sanctuary providing an entertaining and learning experience, graphically illustrating the vast diversity and natural wonders of view in the adjacent bush walk and rainforest and highlighting the global significance of rainforests.



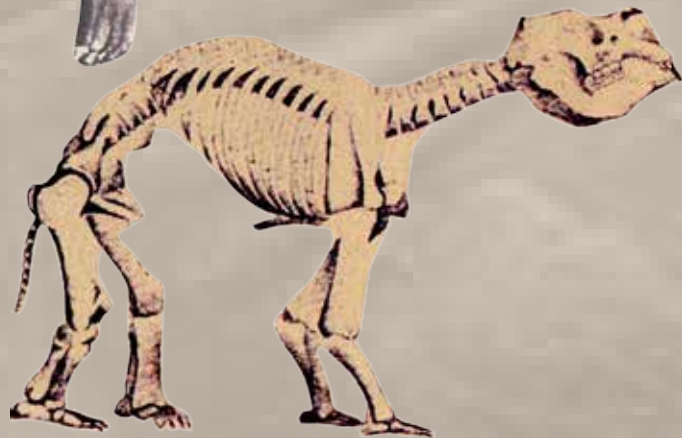
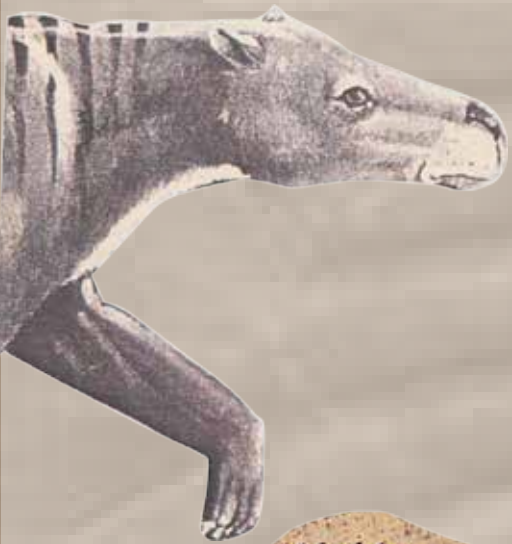
GONDWANA RAINFOREST SANCTUARY

Making the Life-size Thylacoleo in Plasticine

The Riversleigh Prehistoric Rainforest Courtyard

This separate small courtyard took visitors back 10 million years to a prehistoric Riversleigh rainforest.

A Riversleigh display highlighted the incredible wealth of significant fossils finds made in the Riversleigh area. The fascinating comparisons between our modern mammal fauna to the sculptured forms of the Riversleigh mammals would revealed the ancestry of our modern fauna.



GONDWANA RAINFOREST SANCTUARY

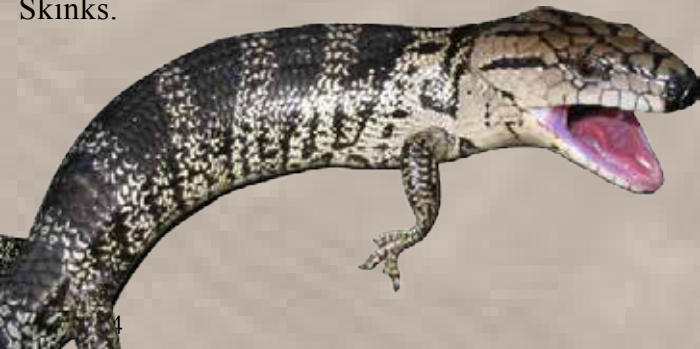
Animal Exhibits Live and Replicated

The freshwater stream was biologically balanced ecosystem featuring aspects of life in a freshwater stream typical of rainforest environments and will include live barrumundi, freshwater crocodiles, tortoises, native fish, crustacea and some platypuses



Live Mammals: Antechinus, Echidna, Water rats in a controlled grotto, Tame pademelons in a controlled area, Koalas integrated into a controlled area.

Live Reptiles: Tortoises, Water dragons, Boyd's Forest Dragons, Angle Headed Dragons, Landmulletts, Major Skinks, Pink Tongued Skinks, Numerous small Skinks.



Live Frogs: Great Barred Frogs, Green Tree Frogs, White Lipped Tree Frogs, Orange Eyed Tree Frogs, Striped Marsh Frogs, Tusked Frogs.



Nocturnal House: Brush Tailed Possums, Ring Tailed Possums, Gliders, Tawny Frogmouths, Pademelons, Bandicoots, Flying Foxes, Antechinus, Brush Tailed Phascogales.

Live Birds: Golden Whistlers, Rufous Fantails, Grey Fantails, White Browed Scrub Wrens, Yellow Throated Scrub Wrens, Eastern Spinebills, Lewin Honeyeaters, Noisy Pitta, Crimson Rosellas, King Parrots, Red-Browed Finch, Yellow Robins, Grey Thrush, Log Runners, Wompoo Pigeons, Red-Crowned Fruit Pigeons, Purple-Crowned Fruit Pigeons, Brown Pigeons, White Headed Pigeons, Torres Strait Pigeons, Green Winged Pigeons, Owlet Nightjars, Tawny Frogmouths, Regent Bower Birds, Satin Bowers, Cat Birds, Paradise Rifle Birds, Rainbow Lorikeets, Welcome Swallows Whip Birds.



GONDWANA RAINFOREST SANCTUARY

The planning stages of Gondwana also included exclusions of animals

Devastating birds of prey or devastating to flora in a confined environment

Wedge-Tailed Eagles, Grey Goshawks, Masked Owls, Powerful Owls, Boobook Owls, Sooty Owls, Sulphur Crested Cockatoos, Palm Cockatoos, Yellow Tailed Black Cockatoos, Red Tailed Black Cockatoos, Sacred Azure Kingfishers-(would strip stream of its fish), King Parrots, Golden Bower Birds, Kookaburras - (would eat small reptiles), Noisy Pitta, Wompoo Pigeons.

Possums that were excluded as they would strip bark and vegetation

Ring tailed Possums, Bobuck Possums, Greater Glider Possums, Sugar and Squirrel Gliders.

Burrowers and diggers that would disturb the ground

Potoroos, Short and Long Nosed Bandicoots.

Feed on low growth planting

Potoroos, Short and Long Nosed Bandicoots.

Strip back bark and vegetation

Climbing Tree Kangaroos, & Possums

Ruthless predators

Eastern Native Cats, Tiger Cats (Quoll), Brush Tail Phascogales

Reptile

12ft salt water Crocodiles, 6ft Freshwater Crocodiles, both apparently on the loose, Lace Monitors

Numerous reptiles and amphibians were placed so as to be highly visible to the public. In conjunction with live species, people experienced in one form or another most of the significant species of the rainforest.



Frogs

Feasibility of exhibiting and maintaining hundreds of different species. Sculptured examples, however could dot the landscape in obvious positions..

Preferred as sculptures

Scrub Turkeys - (the Joffe version is better behaved!), Cassowaries - (like a bull in a china shop; requires a large free range territory). Flying Fox, Giant Land Snails, Leaf Tailed Geckos, Boyd's Rainforest Dragons, Giant Rainforest Skinks.



GONDWANA RAINFOREST SANCTUARY

**Lifesize Animated Dinosaur -
Muttaborrasaurus**



**Robotic
Dinosaur
Internal Steel
Frame**



Robotic Dinosaur - Internal workings of neck



**Muttaborrasaurus Hatch-
lings & Eggs**



GONDWANA RAINFOREST SANCTUARY

Lifesize Dinosaurs of Gondwana



Prehistoric Platypus



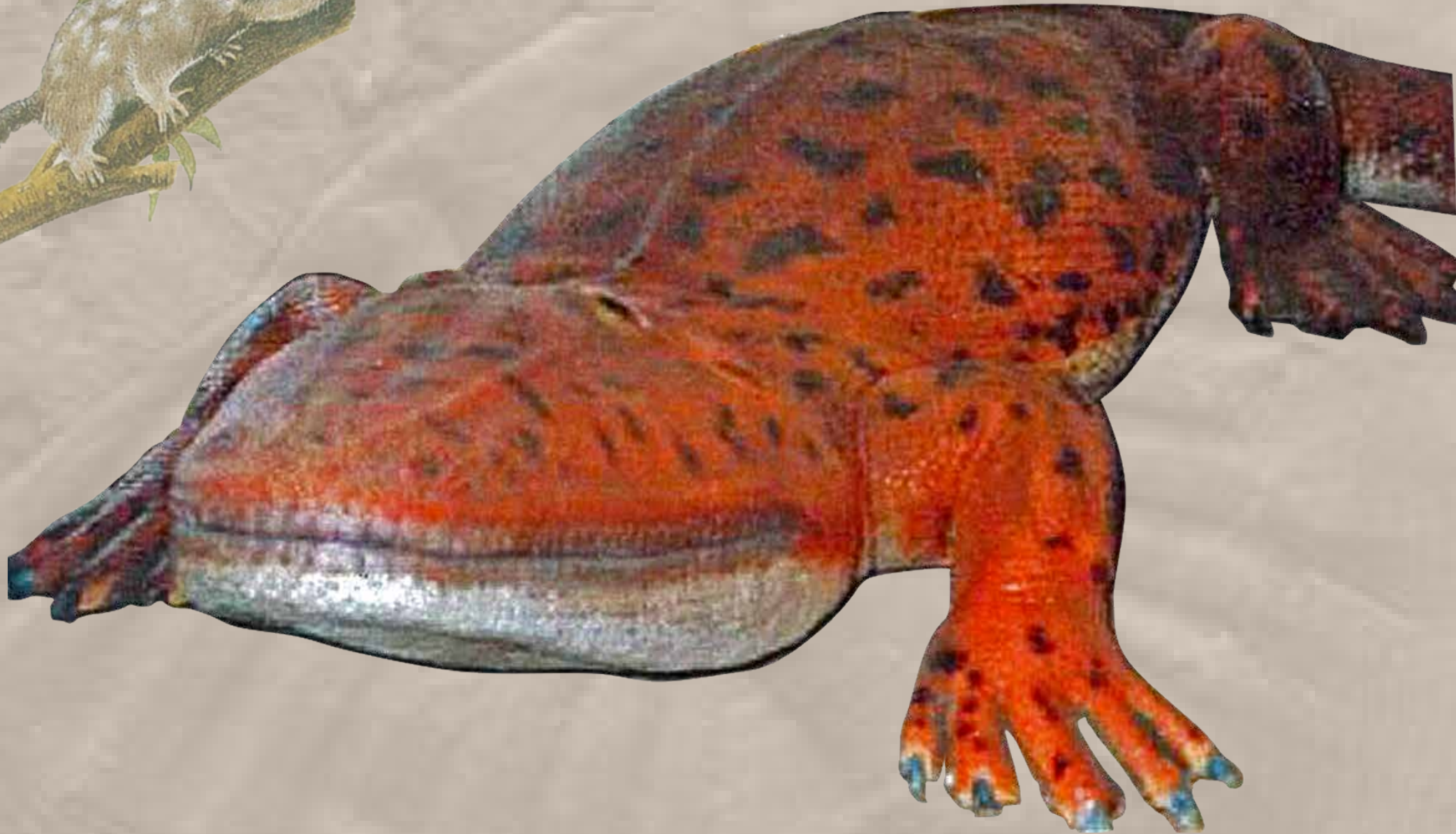
Prehistoric Crocodile



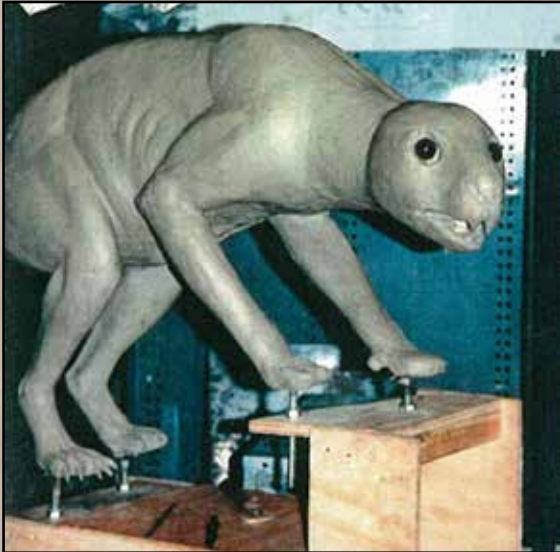
Lifesize Prehistoric Minmi

GONDWANA RAINFOREST SANCTUARY

Lifesize Dinosaurs of Gondwana



GONDWANA RAINFOREST SANCTUARY

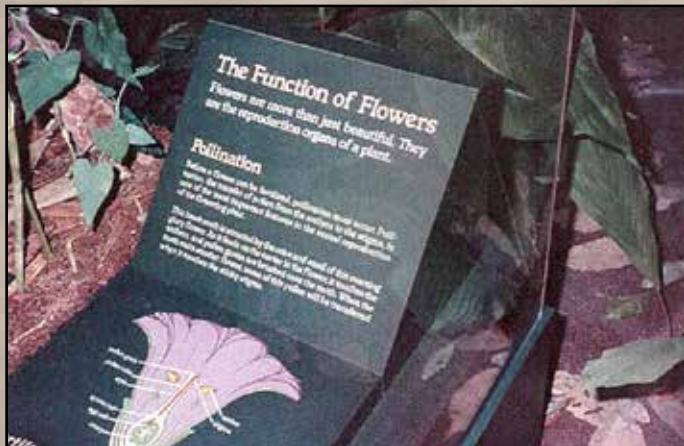


Building a
Megafauna
Diorama



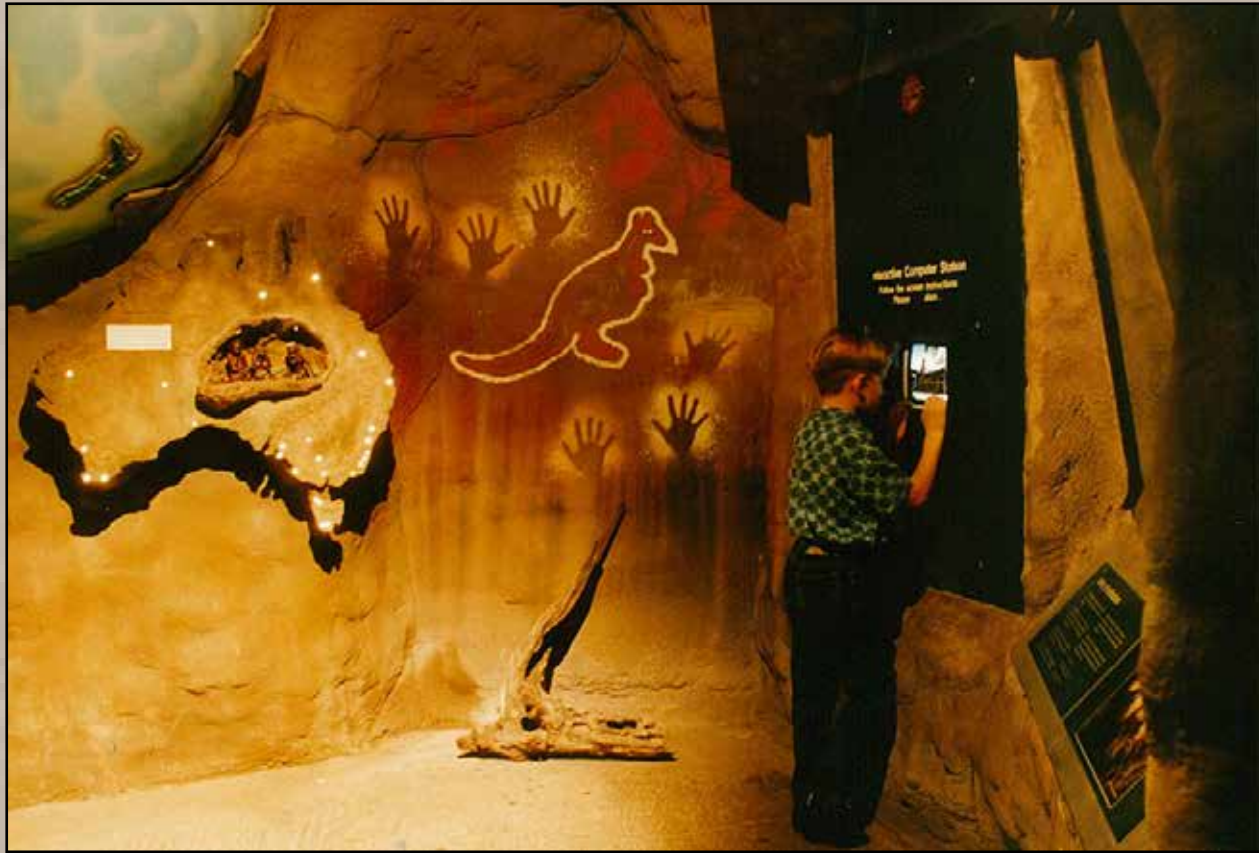
GONDWANA RAINFOREST SANCTUARY

Gondwana Signage



GONDWANA RAINFOREST SANCTUARY

The Coming of Man Exhibit



GONDWANA RAINFOREST SANCTUARY

Thylacine Pepper Ghost Illusion Exhibit



Live Koala Exhibit With Mural Art Backdrop



GONDWANA RAINFOREST SANCTUARY

Insect Exhibit



..... Exhibit



..... Exhibit



GONDWANA RAINFOREST SANCTUARY

Bat Cave Exhibit



Rainforest Tree Exhibit



..... **Exhibit**

GONDWANA RAINFOREST SANCTUARY

Rock Work at Gondwana Entry



Rock Work -Walkway



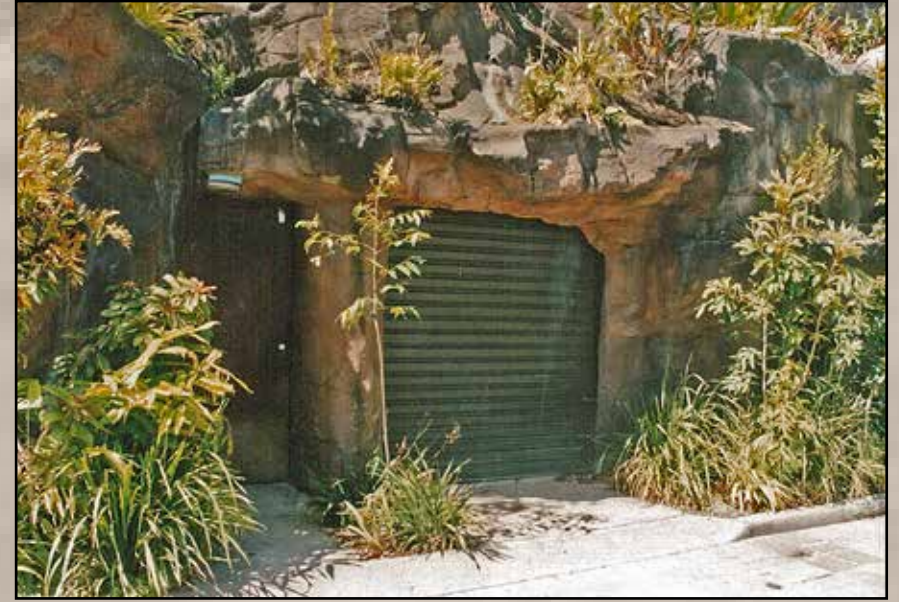
Rock Work -Walkway



GONDWANA RAINFOREST SANCTUARY



**Rockwork
Surrounding Back
Entrances**



**Rockwork & Trees
on walkway**

GONDWANA RAINFOREST SANCTUARY



**Trees of
Gondwana**



GONDWANA RAINFOREST SANCTUARY

Trees and waterway of Gondwana



Trees around walkway



GONDWANA RAINFOREST SANCTUARY

Trees of Gondwana Exhibit



Plants of Gondwana Exhibit



GONDWANA RAINFOREST SANCTUARY



Bridges Over Waterways



GONDWANA RAINFOREST SANCTUARY

Waterfall of Gondwana



GONDWANA RAINFOREST SANCTUARY

Trees of Gondwana



GONDWANA RAINFOREST SANCTUARY

Artificial tree roots surrounding rockwork & rainforest view



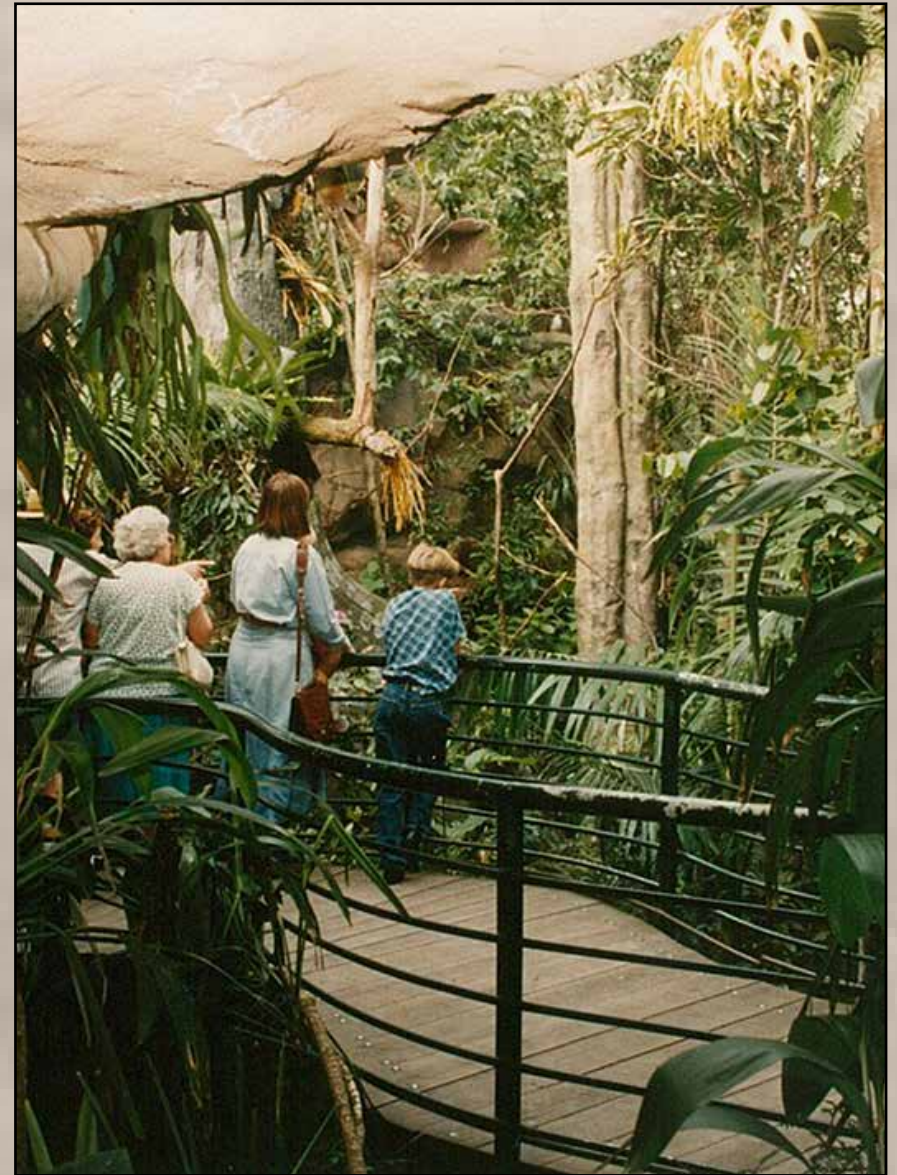
“The forest is a peculiar organism of unlimited kindness and benevolence that makes no demands for its sustenance and extends generously the products of its life activity; it affords protection to all beings, offering shade even to the axeman who destroys it.”

- Buddha

GONDWANA RAINFOREST SANCTUARY



**Trees &
walkways
of
Gondwana**



GONDWANA RAINFOREST SANCTUARY

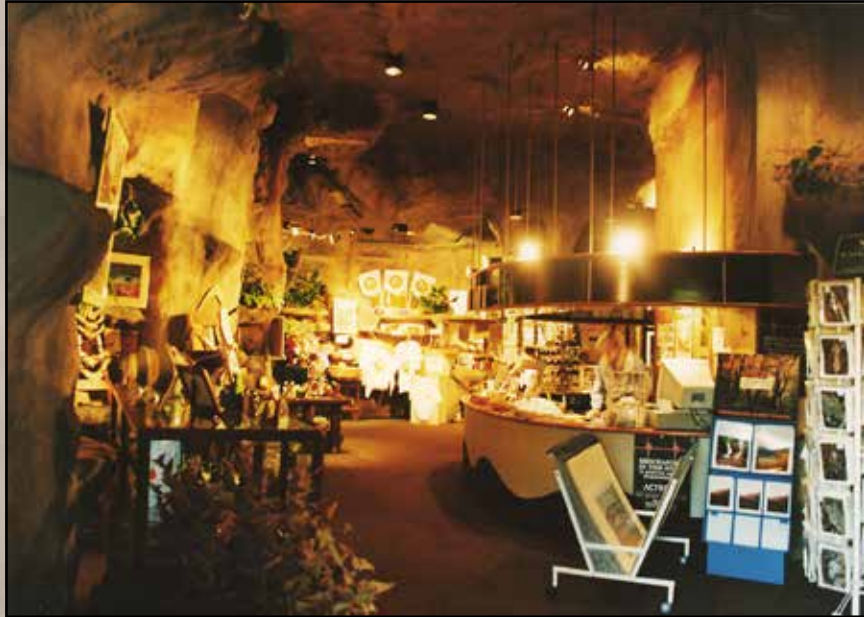


Birds of Gondwana

GONDWANA RAINFOREST SANCTUARY

The Natural History Shop

A museum type natural history and souvenir shop provided high quality original Joffe pieces and reproductions in keeping with the entire exhibition. The shop floor space was allocated for small limited exhibitions.



Gondwana Sanctuary housed various venues:-

Subtropical & Tropical Rainforest

Noctarium Habitat

Animal Care Centre

Creative Hands Natural History Shop

Information Centre

The Moss Garden Themed Restaurant/Kiosk

The Rainforest Theatrette

The Aboriginal Sculptural Elements

Riversleigh Prehistoric Rainforest Courtyard

Habitat Displays of Live and mounted

Rainforest Animals.



GONDWANA RAINFOREST SANCTUARY



Editorial

Gondwana Rainforest - Southbank Brisbane, Queensland

In the early to middle Palaeozoic Era, the continents of the earth were all joined together in a giant continent scientists call Pangaea. At the end of the Palaeozoic, Pangaea had begun to break into two great land masses Laurasia in the Northern Hemisphere and Gondwanaland in the South. Gondwanaland consisted of the present land masses of Australasia, Antarctica, South America, Africa, Madagascar and India.

Because the great southern super continent was separate from the rest of the world for so long, plants and animals here, for millions of years, had a separate evolution. For example, there is evidence that the flowering plants originated in Gondwanaland and probably in the part that was later to become Australia.

Gondwanaland, in the upper Mesozoic Era, 120 million years ago, began to break up, Australia separating from Antarctica and South America about 50 million years ago. This was after the first rainforests of Gondwanaland had evolved, and so Australia became one of the countries to carry these ancient plant communities. Because Australia was now separated from all other continents, its animal life, as well as new forms of plants, evolved separately to produce unique ecosystems. About 15 million years ago, Australia, as it drifted northwards, came close enough to South-east Asia for some of the 'old world' animals and plants to disperse to Australia. Some which had originated here, travelled via India to Asia and recolonized Australia.

About 40 Thousand years ago, man first set foot in Australia when the Aborigines migrated from the north in several waves when the sea level was at its lowest during times of glaciation. The Aborigines' hunting and use of fire profoundly

altered life in Australia, but nowhere near as much as did the activities of the Europeans after their arrival a little over 200 years ago.

What has this to do with birds? just as many of our plants and mammals are very different from those elsewhere, so are many of our birds. What is more certain, organisms have a present world distribution because they evolved on the Gondwanaland super continent. For example, the giant flightless birds are confined to the Gondwanaland continents - the ostrich of Africa; the emu and cassowary of Australia, the moa of New Zealand; and the rhea of South America. The parrots are almost entirely restricted to these continents - South America with its conures, amazons and macaws; Australasia with its grass parrots, rosellas, lorikeets and cockatoos; Africa with greys and love birds; and India with ring-necks. Other places with parrots probably received their parrots by dispersal after the Gondwanaland continents had drifted to their present positions.

For \$10 or more worth of petrol and some wear and tear on your car, you can travel from Brisbane to visit the rainforests at Mt Glorious and see some of the marvels of our Gondwanaland heritage. On or after the 20th June, for much less, you will be able to visit the South Bank Development and visit the **Gondwana Rainforest**, where you will be certain to see much more than you could expect to see during a day visit to the real thing - dripping moss gardens; strange fruiting bodies of diverse fungi; rare birds, mammals, reptiles and amphibians; ground ferns and orchids; and luxuriant climbers and epiphytes. You could visit rainforests on Brisbane's scenic rim, in the cool south east or the wet tropics, and on many occasions, and still not see all these wonders; but in the Gondwana Rainforest you will be fairly certain of seeing the lot all in one visit.

Go see the Gondwana Rainforest at South Brisbane after the 20th June. You'll see an educational display with a difference.

JOHN BOWDEN



An ark in the city

As every schoolchild knows these days, but only a handful of pioneering geologists knew when I was a youngster, Australia was once part of what the scientists named Gondwana — a huge land mass that included what are now Antarctica, New Zealand, South America, southern Africa and India. Then, 80-60 million years ago, when our dinosaurs were in the last throes of extinction and early forms of most of our present-day animals and vegetation were just evolving, our land and the others were torn away from each other by geological forces of unimaginable power.

Australia became a biological ark, so separated from the rest of the world that it largely went its own evolutionary way. This is why so many species of our wildlife, notably marsupials, and most of their botanical habitats are like no others, with the marginal exception of some in South America.

At first, Australia was covered with lakes, inland seas and rainforest. But the climate dried out over millions of years until only the east coast and its high hinterland remained wet enough to support rainforest.

Today, what's left is a mere remnant of the green glory which once covered the country. But what a remnant! And how fortunate we are that we have acted just in time, through World Heritage listings, national parks and other conservation measures, to put most of it, beyond further destruction.

However, it's one thing to see it, even from the inside, and quite another to experience, at first-hand, its secret depths and the complex, beautiful life forms they hide and nurture.

Most people simply do not have the time, patience, knowledge and skill to do this, any more than they can know much about the Great Barrier Reef by merely standing on it at low tide.

But what if rainforest — the

terrestrial equivalent of the Reef in its complexity, beauty and rarity — were to be found in the middle of Brisbane?

What if you could see every major rainforest element there: trees, ferns, palms, mosses, vines, birds, snakes, lizards, frogs, mammals, butterflies, waterways, crocodiles, fish, land-forms and even tropical rain?

And what if you could see more of these, and identify and understand them better, in a hour or two's gentle stroll than in a month of exploring the Daintree, Eungella or Conondales rainforest national parks?

Those are just some of the experiences that await visitors to the Gondwana Rainforest Sanctuary,



Not just lifelike... most of Gondwana will be alive.

which will open on June 20 as a centrepiece of Brisbane's South Bank redevelopment on the site of Expo '88.

This rainforest in the centre of the city is the \$7 million investment and brainchild of ardent naturalists, seasoned bushwalkers and wildlife-display experts David and Irene Joffe.

Starting from bare, bulldozed dirt, they and a 200-strong team of zoologists, botanists and other scientists, designers, artists, landscape architects and construction workers have built an extraordinary re-creation of everything you ever wanted to see and know about rainforest but didn't have the time and opportunity to find out.

It is not just lifelike. Most of it *is* alive, from trees to more than 100 animal species. And what is not alive — because, like the dinosaurs and megafauna, it can't be — is animated or electronically-illustrated so well that it's not hard to think they're living creatures.

There is nothing quite like it anywhere else in the world and Queenslanders should be proud of it.

Originally, the South Bank planners pencilled in a walkthrough aviary for the site, a sound enough idea but not a very new or inspiring one.

Then along came the Joffe Group with its wide experience in creating natural-history displays for many of the country's top tourist attractions: among them, the Gold Coast's Dreamworld, Seaworld and Currumbin Bird Sanctuary, Townsville's Great Barrier Reef Wonderland and Mooloolooba's Underwater World.

"What about a living, breathing, wildlife-inhabited rainforest instead?" asked the Joffes.

"Go to it," said the planners, "just as long as you don't want any financial or other favours from us except a long lease on the site."

The Joffes took a deep breath, put their assets, skills and reputations on the line, and the Gondwana Rainforest Sanctuary was born, modelled with immense skill and love on the Carnarvon Gorge National Park's beautiful natural amphitheatre.

It's anticipated that at least half a million people a year — at \$9.50 for adults, \$5.50 for children 5-15, under 5s free, \$7 for pensioners, and \$25 for a family of four — will visit the Sanctuary.

Gondwana is on a 2355 square metre site with wildlife, walkways, cliffs, caves, boardwalks, bridges, dioramas, theatre, nocturnal house, animal hospital, a creek and a towering waterfall on half a dozen levels. ■