



LIVE | WORK | PLAY

A Modern lifestyle at
affordable prices

PRICE LIST GBP

www.tafagriclobal.com

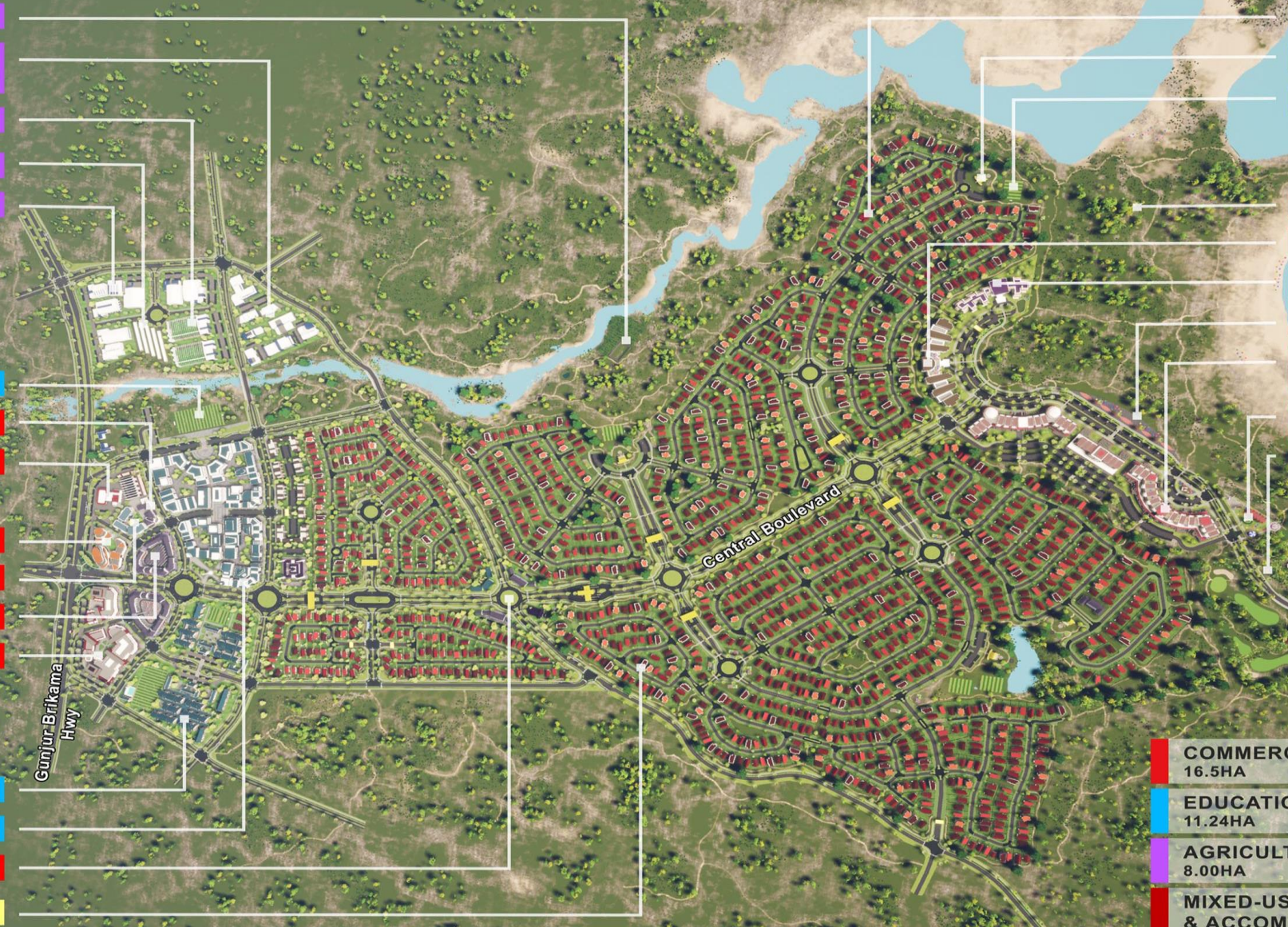
MASTER PLAN

- Aquaculture Farms
- Agricultural Research + Development
- Horticulture Gardens
- Hydroponics Greenhouses
- Showrooms + Warehouses

- Sport
- Police + Fire Services
- Petrol Filling Station

- Offices + Administration
- Health Clinic
- Multi-Transit Hub
- Shops, Market + Businesses

- Senior + Primary Schools
- University + Vocational Training
- Central Community Node
- Residential Housing



- Residential Housing
- Clubhouse
- Park | Sport

- River + Beach Activities
- Hotel
- Wellness Centre
- Riverside Promenade
- Mixed-Use Entertainment + Restaurants + Apartments
- Fun Fair
- Recreation + Golf

Allahain River

Central Boulevard

Gunjur Brikama Hwy

COMMERCIAL BUSINESS ZONE	16.5HA
EDUCATION + TRAINING ZONE	11.24HA
AGRICULTURE + WAREHOUSE ZONE	8.00HA
MIXED-USE ENTERTAINMENT, RECREATION & ACCOMMODATION ZONE	16.5HA
RESIDENTIAL ZONE	106.12HA

BENNA ESTATE SITE PLAN



Facilities

- Shopping Center
 - Petrol Station
 - Market / shops / Restaurants
 - Offices / Businesses
 - Education
 - Kindergarten
 - Lower & Middle School
 - High School
 - University
 - Vocational School
 - Sports Facility & Gym
- Transit Center
 - Institution / Government
 - Industrial / Logistics
 - Agricultural
 - Boutique hotel
 - Student Accommodation
 - Parks/Open space
 - Residential Estate
 - Affordable Housing
 - Luxury Villas
 - Retirement Village



2 BEDROOM bungalow 49 SOM

MARIATOU



- 2 BEDROOMS
- BATHS: 2
- LIVING ROOM: 1
- KITCHEN: 1 PARTLY FITTED
- DINNING AREA

PRICE LIST

Plot Number	Plot Size (sqm)	49m2 - 2 bed		
		Price (USD)	25%	Est. Monthly Repayment
BN 148	178.5	£35,601	£8,900	£338
BN 145	180.8	£35,700	£8,925	£339
BN 157	187	£35,968	£8,992	£342
BN 146 /147	187.5	£35,989	£8,997	£342
BN 143	190.5	£36,119	£9,030	£343
BN 144	192	£36,184	£9,046	£344
BN 158	202	£36,615	£9,154	£348
BN 156	265	£39,334	£9,833	£374
BN 122	279	£39,938	£9,984	£379
BN 155	292	£40,499	£10,125	£385
BN 100	312	£41,362	£10,341	£393
BN 139 - 142	312.5	£41,384	£10,346	£393
BN 101	324	£41,880	£10,470	£398
BN 124 & 125	332	£42,225	£10,556	£401
BN 130 & 131	342	£42,657	£10,664	£405
BN 121	344.8	£42,777	£10,694	£406
BN 112	346	£42,829	£10,707	£407
BN 129	352	£43,088	£10,772	£409
BN 114	363	£43,563	£10,891	£414
BN 151 & 153	369	£43,822	£10,955	£416
BN 149	370	£43,865	£10,966	£417
BN 150	372	£43,951	£10,988	£418
BN 152	374	£44,038	£11,009	£418
BN 106 - 120	375	£44,081	£11,020	£419
BN 154	376	£44,124	£11,031	£419
BN 113	380.8	£44,331	£11,083	£421
BN 137	383.5	£44,448	£11,112	£422
BN 138	383.7	£44,456	£11,114	£422
BN 136	384.9	£44,508	£11,127	£423
BN 135	385	£44,512	£11,128	£423
BN 134	386	£44,555	£11,139	£423
BN 133	387	£44,599	£11,150	£424
BN 132	387.9	£44,637	£11,159	£424
BN 128	403.8	£45,324	£11,331	£431
BN 127	413	£45,721	£11,430	£434
BN 126	415	£45,807	£11,452	£435
BN 102	430	£46,454	£11,614	£441
BN 103	435	£46,670	£11,667	£443
BN 105	440	£46,886	£11,721	£445
BN 123	500	£49,475	£12,369	£470
BN 104	514	£50,079	£12,520	£476

2 BEDROOM bungalow 68 SQM

HAJA



- 2 BEDROOMS
- BATHS:2
- LIVING ROOM: 1
- KITCHEN: 1 PARTLY FITTED
- DINNING AREA

PRICE LIST

Plot Number	Plot Size (sqm)	2 Bed Haja - 68m2		
		Price (USD)	25%	Est. Monthly Repayment
BN 148	178.5	£40,229	£10,057	£450
BN 145	180.8	£40,328	£10,082	£452
BN 157	187	£40,595	£10,149	£455
BN 146 /147	187.5	£40,617	£10,154	£455
BN 143	190.5	£40,746	£10,187	£456
BN 144	192	£40,811	£10,203	£457
BN 158	202	£41,243	£10,311	£462
BN 156	265	£43,961	£10,990	£492
BN 122	279	£44,566	£11,141	£499
BN 155	292	£45,127	£11,282	£505
BN 100	312	£45,990	£11,497	£515
BN 139 - 142	312.5	£46,011	£11,503	£515
BN 101	324	£46,507	£11,627	£521
BN 124 & 125	332	£46,853	£11,713	£525
BN 130 & 131	342	£47,284	£11,821	£530
BN 121	344.8	£47,405	£11,851	£531
BN 112	346	£47,457	£11,864	£531
BN 129	352	£47,716	£11,929	£534
BN 114	363	£48,190	£12,048	£540
BN 151 & 153	369	£48,449	£12,112	£543
BN 149	370	£48,493	£12,123	£543
BN 150	372	£48,579	£12,145	£544
BN 152	374	£48,665	£12,166	£545
BN 106 - 120	375	£48,708	£12,177	£545
BN 154	376	£48,751	£12,188	£546
BN 113	380.8	£48,959	£12,240	£548
BN 137	383.5	£49,075	£12,269	£550
BN 138	383.7	£49,084	£12,271	£550
BN 136	384.9	£49,136	£12,284	£550
BN 135	385	£49,140	£12,285	£550
BN 134	386	£49,183	£12,296	£551
BN 133	387	£49,226	£12,307	£551
BN 132	387.9	£49,265	£12,316	£552
BN 128	403.8	£49,951	£12,488	£559
BN 127	413	£50,348	£12,587	£564
BN 126	415	£50,434	£12,609	£565
BN 102	430	£51,082	£12,770	£572
BN 103	435	£51,298	£12,824	£574
BN 105	440	£51,513	£12,878	£577
BN 123	500	£54,103	£13,526	£606
BN 104	514	£54,707	£13,677	£613

3 BEDROOM bungalow 70 SQM

OULAYE



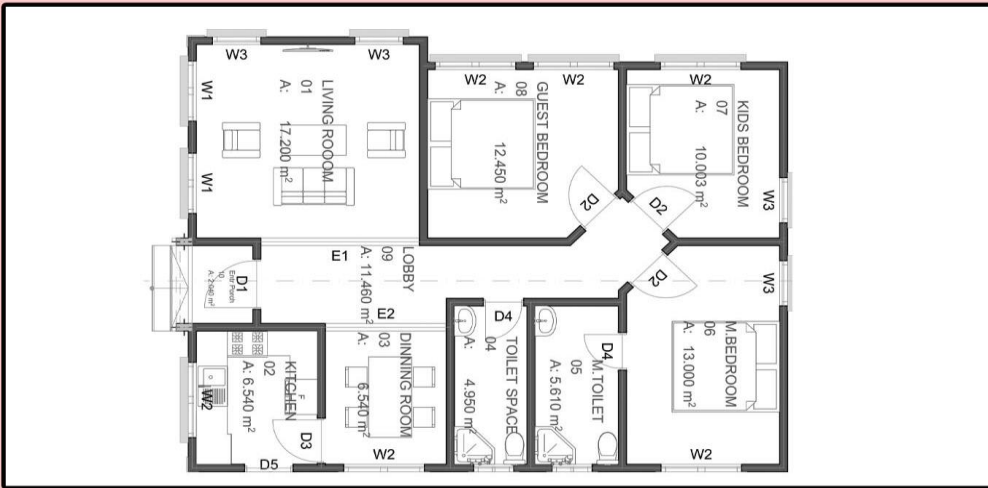
- 3 BEDROOMS
- BATHS: 2
- LIVING ROOM: 1
- KITCHEN: 1 PARTLY FITTED
- DINNING AREA

PRICE LIST

Plot Number	Plot Size (sqm)	70m2 - 3 bed		
		Price (USD)	25%	Est. Monthly Repayment
BN 148	178.5	£41,159	£10,290	£391
BN 145	180.8	£41,258	£10,315	£392
BN 157	187	£41,526	£10,381	£395
BN 146 /147	187.5	£41,547	£10,387	£395
BN 143	190.5	£41,677	£10,419	£396
BN 144	192	£41,741	£10,435	£397
BN 158	202	£42,173	£10,543	£401
BN 156	265	£44,892	£11,223	£427
BN 122	279	£45,496	£11,374	£432
BN 155	292	£46,057	£11,514	£438
BN 100	312	£46,920	£11,730	£446
BN 139 - 142	312.5	£46,942	£11,735	£446
BN 101	324	£47,438	£11,859	£451
BN 124 & 125	332	£47,783	£11,946	£454
BN 130 & 131	342	£48,215	£12,054	£458
BN 121	344.8	£48,335	£12,084	£459
BN 112	346	£48,387	£12,097	£460
BN 129	352	£48,646	£12,162	£462
BN 114	363	£49,121	£12,280	£467
BN 151 & 153	369	£49,380	£12,345	£469
BN 149	370	£49,423	£12,356	£470
BN 150	372	£49,509	£12,377	£470
BN 152	374	£49,595	£12,399	£471
BN 106 - 120	375	£49,639	£12,410	£472
BN 154	376	£49,682	£12,420	£472
BN 113	380.8	£49,889	£12,472	£474
BN 137	383.5	£50,005	£12,501	£475
BN 138	383.7	£50,014	£12,504	£475
BN 136	384.9	£50,066	£12,516	£476
BN 135	385	£50,070	£12,518	£476
BN 134	386	£50,113	£12,528	£476
BN 133	387	£50,156	£12,539	£477
BN 132	387.9	£50,195	£12,549	£477
BN 128	403.8	£50,881	£12,720	£483
BN 127	413	£51,278	£12,820	£487
BN 126	415	£51,365	£12,841	£488
BN 102	430	£52,012	£13,003	£494
BN 103	435	£52,228	£13,057	£496
BN 105	440	£52,444	£13,111	£498
BN 123	500	£55,033	£13,758	£523
BN 104	514	£55,637	£13,909	£529

3 BEDROOM bungalow 90 SOM

NAFFIE



- 3 BEDROOMS
- BATHS: 2
- LIVING ROOM: 1
- KITCHEN: 1 PARTLY FITTED
- DINNING AREA

PRICE LIST

Plot Number	Plot Size (sqm)	3 Bed Naffie - 90m2		
		Price (USD)	25%	Est. Monthly Repayment
BN 156	265	£49,501	£12,375	£554
BN 122	279	£50,105	£12,526	£561
BN 155	292	£50,666	£12,667	£567
BN 100	312	£51,530	£12,882	£577
BN 139 - 142	312.5	£51,551	£12,888	£577
BN 101	324	£52,047	£13,012	£583
BN 124 & 125	332	£52,393	£13,098	£587
BN 130 & 131	342	£52,824	£13,206	£592
BN 121	344.8	£52,945	£13,236	£593
BN 112	346	£52,997	£13,249	£593
BN 129	352	£53,256	£13,314	£596
BN 114	363	£53,730	£13,433	£602
BN 151 & 153	369	£53,989	£13,497	£605
BN 149	370	£54,032	£13,508	£605
BN 150	372	£54,119	£13,530	£606
BN 152	374	£54,205	£13,551	£607
BN 106 - 120	375	£54,248	£13,562	£607
BN 154	376	£54,291	£13,573	£608
BN 113	380.8	£54,498	£13,625	£610
BN 137	383.5	£54,615	£13,654	£612
BN 138	383.7	£54,624	£13,656	£612
BN 136	384.9	£54,675	£13,669	£612
BN 135	385	£54,680	£13,670	£612
BN 134	386	£54,723	£13,681	£613
BN 133	387	£54,766	£13,692	£613
BN 132	387.9	£54,805	£13,701	£614
BN 128	403.8	£55,491	£13,873	£621
BN 127	413	£55,888	£13,972	£626
BN 126	415	£55,974	£13,994	£627
BN 102	430	£56,622	£14,155	£634
BN 103	435	£56,837	£14,209	£636
BN 105	440	£57,053	£14,263	£639
BN 123	500	£59,642	£14,911	£668
BN 104	514	£60,247	£15,062	£675

3 BEDROOM
bungalow 90 SOM

Majula



- **BEDROOMS :3**
- **BATHROOM: 3**
- **LIVING ROOM:1**
- **DINNING AREA**
- **KITCHEN: PARTLY FITTED**

PRICE LIST

		3 Bed Majula - 90m2		
Plot Number	Plot Size (sqm)	Price (USD)	25% Down Payment	Est. Monthly Repayment
BN 156	265	£49,501	£12,375	£470
BN 122	279	£50,105	£12,526	£476
BN 155	292	£50,666	£12,667	£481
BN 100	312	£51,530	£12,882	£490
BN 139 - 142	312.5	£51,551	£12,888	£490
BN 101	324	£52,047	£13,012	£494
BN 124 & 125	332	£52,393	£13,098	£498
BN 130 & 131	342	£52,824	£13,206	£502
BN 121	344.8	£52,945	£13,236	£503
BN 112	346	£52,997	£13,249	£504
BN 129	352	£53,256	£13,314	£506
BN 114	363	£53,730	£13,433	£510
BN 151 & 153	369	£53,989	£13,497	£513
BN 149	370	£54,032	£13,508	£513
BN 150	372	£54,119	£13,530	£514
BN 152	374	£54,205	£13,551	£515
BN 106 - 120	375	£54,248	£13,562	£515
BN 154	376	£54,291	£13,573	£516
BN 113	380.8	£54,498	£13,625	£518
BN 137	383.5	£54,615	£13,654	£519
BN 138	383.7	£54,624	£13,656	£519
BN 136	384.9	£54,675	£13,669	£519
BN 135	385	£54,680	£13,670	£519
BN 134	386	£54,723	£13,681	£520
BN 133	387	£54,766	£13,692	£520
BN 132	387.9	£54,805	£13,701	£521
BN 128	403.8	£55,491	£13,873	£527
BN 127	413	£55,888	£13,972	£531
BN 126	415	£55,974	£13,994	£532
BN 102	430	£56,622	£14,155	£538
BN 103	435	£56,837	£14,209	£540
BN 105	440	£57,053	£14,263	£542
BN 123	500	£59,642	£14,911	£567
BN 104	514	£60,247	£15,062	£572

3 BEDROOM bungalow 100 SQM

SAFFIE



- BEDROOMS: 3
- BATHROOM: 3
- LIVING ROOM: 1
- DINNING: 1

PRICE LIST

		3 Bed Saffie - 100m2		
Plot Number	Plot Size (sqm)	Price (USD)	25%	Est. Monthly Repayment
BN 156	265	£54,317	£13,579	£516
BN 122	279	£54,922	£13,730	£522
BN 155	292	£55,483	£13,871	£527
BN 100	312	£56,346	£14,086	£535
BN 139 - 142	312.5	£56,367	£14,092	£536
BN 101	324	£56,863	£14,216	£540
BN 124 & 125	332	£57,209	£14,302	£544
BN 130 & 131	342	£57,640	£14,410	£548
BN 121	344.8	£57,761	£14,440	£549
BN 112	346	£57,813	£14,453	£549
BN 129	352	£58,072	£14,518	£552
BN 114	363	£58,546	£14,637	£556
BN 151 & 153	369	£58,805	£14,701	£559
BN 149	370	£58,849	£14,712	£559
BN 150	372	£58,935	£14,734	£560
BN 152	374	£59,021	£14,755	£561
BN 106 - 120	375	£59,064	£14,766	£561
BN 154	376	£59,107	£14,777	£562
BN 113	380.8	£59,315	£14,829	£564
BN 137	383.5	£59,431	£14,858	£565
BN 138	383.7	£59,440	£14,860	£565
BN 136	384.9	£59,491	£14,873	£565
BN 135	385	£59,496	£14,874	£565
BN 134	386	£59,539	£14,885	£566
BN 133	387	£59,582	£14,896	£566
BN 132	387.9	£59,621	£14,905	£566
BN 128	403.8	£60,307	£15,077	£573
BN 127	413	£60,704	£15,176	£577
BN 126	415	£60,790	£15,198	£578
BN 102	430	£61,438	£15,359	£584
BN 103	435	£61,654	£15,413	£586
BN 105	440	£61,869	£15,467	£588
BN 123	500	£64,459	£16,115	£612
BN 104	514	£65,063	£16,266	£618

3 BEDROOM
bungalow 120 SQM

ABBIS



- 3 BEDROOMS
- BATHS: 2
- LIVING ROOM: 1
- KITCHEN: 1 PARTLY FITTED
- DINNING AREA

PRICE LIST

		3 Bed Abbis - 120m2		
Plot Number	Plot Size (sqm)	Price (USD)	25%	Est. Monthly Repayment
BN 100	312	£61,362	£15,341	£583
BN 139 - 142	312.5	£61,384	£15,346	£583
BN 101	324	£61,880	£15,470	£588
BN 124 & 125	332	£62,225	£15,556	£591
BN 130 & 131	342	£62,657	£15,664	£595
BN 121	344.8	£62,778	£15,694	£596
BN 112	346	£62,829	£15,707	£597
BN 129	352	£63,088	£15,772	£599
BN 114	363	£63,563	£15,891	£604
BN 151 & 153	369	£63,822	£15,956	£606
BN 149	370	£63,865	£15,966	£607
BN 150	372	£63,951	£15,988	£608
BN 152	374	£64,038	£16,009	£608
BN 106 - 120	375	£64,081	£16,020	£609
BN 154	376	£64,124	£16,031	£609
BN 113	380.8	£64,331	£16,083	£611
BN 137	383.5	£64,448	£16,112	£612
BN 138	383.7	£64,456	£16,114	£612
BN 136	384.9	£64,508	£16,127	£613
BN 135	385	£64,512	£16,128	£613
BN 134	386	£64,556	£16,139	£613
BN 133	387	£64,599	£16,150	£614
BN 132	387.9	£64,638	£16,159	£614
BN 128	403.8	£65,324	£16,331	£621
BN 127	413	£65,721	£16,430	£624
BN 126	415	£65,807	£16,452	£625
BN 102	430	£66,454	£16,614	£631
BN 103	435	£66,670	£16,668	£633
BN 105	440	£66,886	£16,721	£635
BN 123	500	£69,475	£17,369	£660
BN 104	514	£70,079	£17,520	£666

4 BEDROOM
bungalow 133 SQM

SALLY



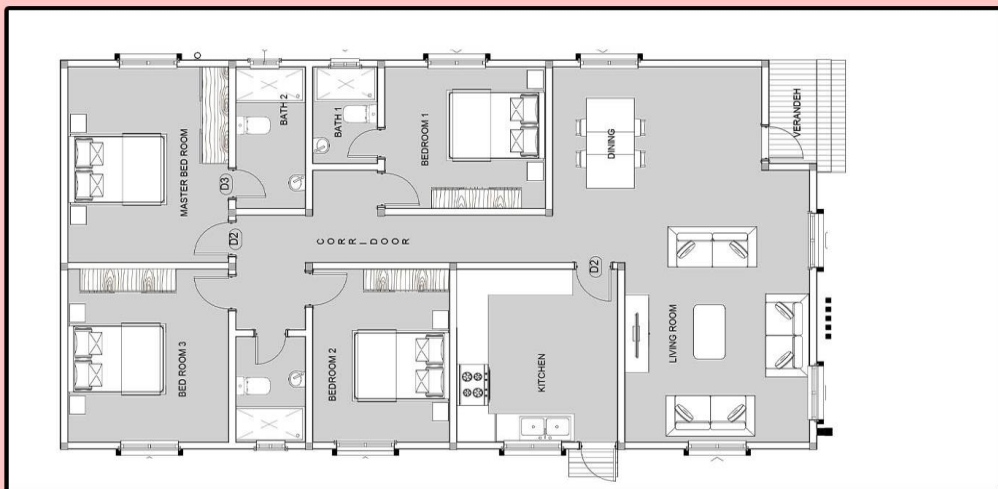
- **BEDROOMS:4**
- **2 ENSUITE BEDROOMS**
- **BATHROOMS: 2 SHARED**
- **LIVING ROOM:1 | PANTRY**
- **KITCHEN: PARTLY FITTED | DINNING AREA**

PRICE LIST

		4 Bed Sally - 133m2		
Plot Number	Plot Size (sqm)	Price (USD)	25%	Est. Monthly Repayment
BN 100	312	£64,674	£16,168	£614
BN 139 - 142	312.5	£64,695	£16,174	£615
BN 101	324	£65,192	£16,298	£619
BN 124 & 125	332	£65,537	£16,384	£623
BN 130 & 131	342	£65,968	£16,492	£627
BN 121	344.8	£66,089	£16,522	£628
BN 112	346	£66,141	£16,535	£628
BN 129	352	£66,400	£16,600	£631
BN 114	363	£66,875	£16,719	£635
BN 151 & 153	369	£67,134	£16,783	£638
BN 149	370	£67,177	£16,794	£638
BN 150	372	£67,263	£16,816	£639
BN 152	374	£67,349	£16,837	£640
BN 106 - 120	375	£67,393	£16,848	£640
BN 154	376	£67,436	£16,859	£641
BN 113	380.8	£67,643	£16,911	£643
BN 137	383.5	£67,759	£16,940	£644
BN 138	383.7	£67,768	£16,942	£644
BN 136	384.9	£67,820	£16,955	£644
BN 135	385	£67,824	£16,956	£644
BN 134	386	£67,867	£16,967	£645
BN 133	387	£67,910	£16,978	£645
BN 132	387.9	£67,949	£16,987	£646
BN 128	403.8	£68,635	£17,159	£652
BN 127	413	£69,032	£17,258	£656
BN 126	415	£69,119	£17,280	£657
BN 102	430	£69,766	£17,442	£663
BN 103	435	£69,982	£17,495	£665
BN 105	440	£70,198	£17,549	£667
BN 123	500	£72,787	£18,197	£692
BN 104	514	£73,391	£18,348	£697

4 BEDROOM bungalow 133 SQM

AISHA



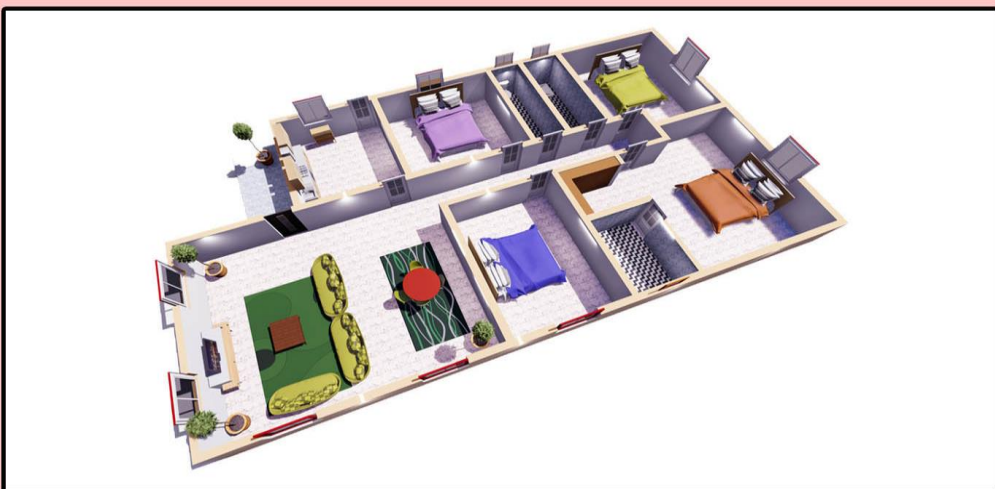
- **BEDROOMS: 4**
- **BATHROOMS 2 AND 1 GUEST WASH ROOM**
- **DINNING: 1**
- **LIVING :1**
- **KITCHEN: 1 PARTLY FITTED**

PRICE LIST

		4 Bed Aisha - 133m2		
Plot Number	Plot Size (sqm)	Price (USD)	25%	Est. Monthly Repayment
BN 100	312	£57,486	£14,371	£644
BN 139 - 142	312.5	£57,508	£14,377	£644
BN 101	324	£58,004	£14,501	£650
BN 124 & 125	332	£58,349	£14,587	£653
BN 130 & 131	342	£58,781	£14,695	£658
BN 121	344.8	£58,901	£14,725	£660
BN 112	346	£58,953	£14,738	£660
BN 129	352	£59,212	£14,803	£663
BN 114	363	£59,687	£14,922	£668
BN 151 & 153	369	£59,946	£14,986	£671
BN 149	370	£59,989	£14,997	£672
BN 150	372	£60,075	£15,019	£673
BN 152	374	£60,161	£15,040	£674
BN 106 - 111	375	£60,205	£15,051	£674
BN 115 - 120	375	£60,205	£15,051	£674
BN 154	376	£60,248	£15,062	£675
BN 113	380.8	£60,455	£15,114	£677
BN 137	383.5	£60,571	£15,143	£678
BN 138	383.7	£60,580	£15,145	£678
BN 136	384.9	£60,632	£15,158	£679
BN 135	385	£60,636	£15,159	£679
BN 134	386	£60,679	£15,170	£680
BN 133	387	£60,722	£15,181	£680
BN 132	387.9	£60,761	£15,190	£680
BN 128	403.8	£61,447	£15,362	£688
BN 127	413	£61,844	£15,461	£693
BN 126	415	£61,931	£15,483	£694
BN 102	430	£62,578	£15,645	£701
BN 103	435	£62,794	£15,698	£703
BN 105	440	£63,010	£15,752	£706
BN 123	500	£65,599	£16,400	£735
BN 104	514	£66,203	£16,551	£741

4 BEDROOM
bungalow 133 SQM

SARATA



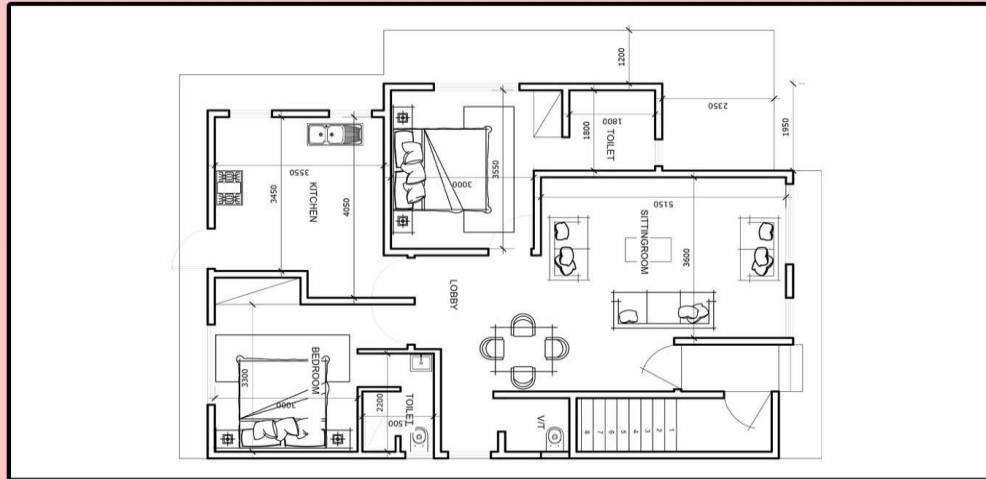
- **BEDROOMS: 4**
- **MASTER BEDROOM WITH WALK-IN CLOSET**
- **BATHROOM: 3**
- **LIVING ROOM : 1**

PRICE LIST

Plot Number	Plot Size (sqm)	4 Bed Sarata - 133m2		
		Price (USD)	25%	Est. Monthly Repayment
BN 100	312	£61,741	£15,435	£587
BN 139 - 142	312.5	£61,763	£15,441	£587
BN 101	324	£62,259	£15,565	£592
BN 124 & 125	332	£62,604	£15,651	£595
BN 130 & 131	342	£63,036	£15,759	£599
BN 121	344.8	£63,157	£15,789	£600
BN 112	346	£63,209	£15,802	£601
BN 129	352	£63,467	£15,867	£603
BN 114	363	£63,942	£15,986	£607
BN 151 & 153	369	£64,201	£16,050	£610
BN 149	370	£64,244	£16,061	£610
BN 150	372	£64,331	£16,083	£611
BN 152	374	£64,417	£16,104	£612
BN 106 - 120	375	£64,460	£16,115	£612
BN 154	376	£64,503	£16,126	£613
BN 113	380.8	£64,710	£16,178	£615
BN 137	383.5	£64,827	£16,207	£616
BN 138	383.7	£64,835	£16,209	£616
BN 136	384.9	£64,887	£16,222	£616
BN 135	385	£64,892	£16,223	£617
BN 134	386	£64,935	£16,234	£617
BN 133	387	£64,978	£16,244	£617
BN 132	387.9	£65,017	£16,254	£618
BN 128	403.8	£65,703	£16,426	£624
BN 127	413	£66,100	£16,525	£628
BN 126	415	£66,186	£16,547	£629
BN 102	430	£66,833	£16,708	£635
BN 103	435	£67,049	£16,762	£637
BN 105	440	£67,265	£16,816	£639
BN 123	500	£69,854	£17,464	£664
BN 104	514	£70,458	£17,615	£669

2 BEDROOM APARTMENT 95 SQM

BETTY



FLOOR PLAN

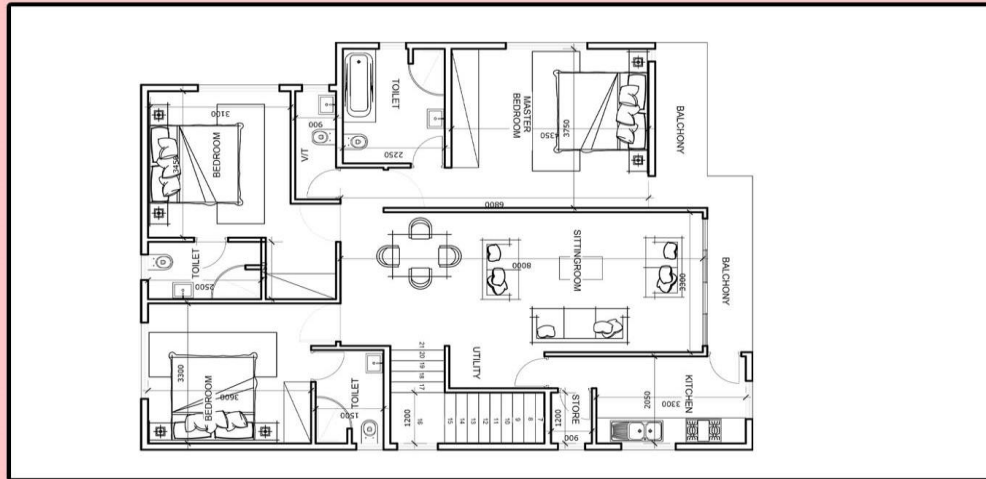
- BEDROOMS: 2
- BATHROOMS: 2 AND 1 GUESTS WASH ROOM
- LIVING ROOM : 1
- DINNING : 1
- KITCHEN: 1 PARTLY FITTED

PRICE LIST

		2 Bed Betty - 95m2 Apartment		
Plot Number	Plot Size (sqm)	Price (USD)	25%	Est. Monthly Repayment
BN 148	178.5	£41,900	£10,475	£469
BN 145	180.8	£41,941	£10,485	£470
BN 157	187	£42,050	£10,512	£471
BN 146 /147	187.5	£42,058	£10,515	£471
BN 143	190.5	£42,111	£10,528	£472
BN 144	192	£42,138	£10,534	£472
BN 158	202	£42,314	£10,578	£474
BN 156	265	£43,422	£10,856	£486
BN 122	279	£43,669	£10,917	£489
BN 155	292	£43,898	£10,974	£492
BN 100	312	£44,250	£11,062	£496
BN 139 - 142	312.5	£44,258	£11,065	£496
BN 101	324	£44,461	£11,115	£498
BN 124 & 125	332	£44,602	£11,150	£499
BN 130 & 131	342	£44,778	£11,194	£501
BN 121	344.8	£44,827	£11,207	£502
BN 112	346	£44,848	£11,212	£502
BN 129	352	£44,954	£11,238	£503
BN 114	363	£45,147	£11,287	£506
BN 151 & 153	369	£45,253	£11,313	£507
BN 149	370	£45,270	£11,318	£507
BN 150	372	£45,306	£11,326	£507
BN 152	374	£45,341	£11,335	£508
BN 106 - 120	375	£45,358	£11,340	£508
BN 154	376	£45,376	£11,344	£508
BN 113	380.8	£45,461	£11,365	£509
BN 137	383.5	£45,508	£11,377	£510
BN 138	383.7	£45,512	£11,378	£510
BN 136	384.9	£45,533	£11,383	£510
BN 135	385	£45,534	£11,384	£510
BN 134	386	£45,552	£11,388	£510
BN 133	387	£45,570	£11,392	£510
BN 132	387.9	£45,586	£11,396	£510
BN 128	403.8	£45,865	£11,466	£514
BN 127	413	£46,027	£11,507	£515
BN 126	415	£46,062	£11,516	£516
BN 102	430	£46,326	£11,582	£519
BN 103	435	£46,414	£11,604	£520
BN 105	440	£46,502	£11,626	£521
BN 123	500	£47,558	£11,890	£533
BN 104	514	£47,805	£11,951	£535

3 BEDROOM APARTMENT 131 SQM

BETTY



FLOOR PLAN

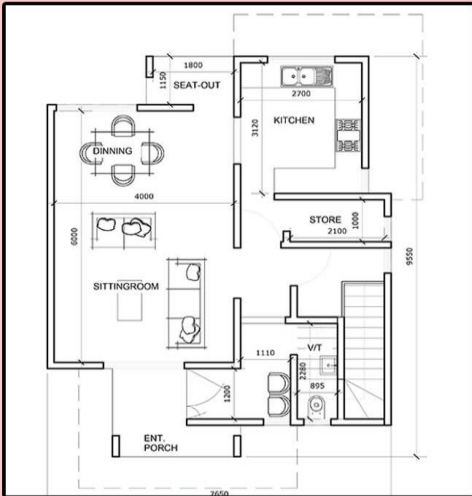
- **BEDROOMS: 3**
- **BATHROOMS: 3 AND 1 GUESTS WASH ROOM**
- **LIVING ROOM : 1**
- **DINNING : 1**
- **KITCHEN: 1 PARTLY FITTED**

PRICE LIST

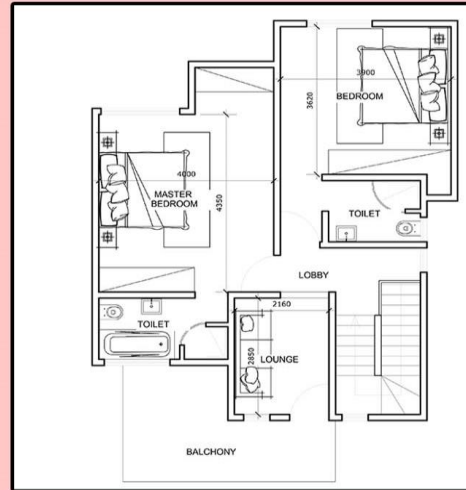
		3 Bed Betty - 131m2 Apartment		
Plot Number	Plot Size (sqm)	Price (USD)	25%	Est. Monthly Repayment
BN 148	178.5	£56,316	£14,079	£631
BN 145	180.8	£56,357	£14,089	£631
BN 157	187	£56,466	£14,117	£632
BN 146 /147	187.5	£56,475	£14,119	£632
BN 143	190.5	£56,528	£14,132	£633
BN 144	192	£56,554	£14,139	£633
BN 158	202	£56,730	£14,183	£635
BN 156	265	£57,839	£14,460	£648
BN 122	279	£58,085	£14,521	£650
BN 155	292	£58,314	£14,579	£653
BN 100	312	£58,666	£14,667	£657
BN 139 - 142	312.5	£58,675	£14,669	£657
BN 101	324	£58,877	£14,719	£659
BN 124 & 125	332	£59,018	£14,755	£661
BN 130 & 131	342	£59,194	£14,799	£663
BN 121	344.8	£59,243	£14,811	£663
BN 112	346	£59,264	£14,816	£664
BN 129	352	£59,370	£14,843	£665
BN 114	363	£59,564	£14,891	£667
BN 151 & 153	369	£59,669	£14,917	£668
BN 149	370	£59,687	£14,922	£668
BN 150	372	£59,722	£14,931	£669
BN 152	374	£59,757	£14,939	£669
BN 106 - 120	375	£59,775	£14,944	£669
BN 154	376	£59,792	£14,948	£670
BN 113	380.8	£59,877	£14,969	£671
BN 137	383.5	£59,924	£14,981	£671
BN 138	383.7	£59,928	£14,982	£671
BN 136	384.9	£59,949	£14,987	£671
BN 135	385	£59,951	£14,988	£671
BN 134	386	£59,968	£14,992	£672
BN 133	387	£59,986	£14,997	£672
BN 132	387.9	£60,002	£15,000	£672
BN 128	403.8	£60,282	£15,070	£675
BN 127	413	£60,444	£15,111	£677
BN 126	415	£60,479	£15,120	£677
BN 102	430	£60,743	£15,186	£680
BN 103	435	£60,831	£15,208	£681
BN 105	440	£60,919	£15,230	£682
BN 123	500	£61,975	£15,494	£694
BN 104	514	£62,221	£15,555	£697

2 BEDROOM STOREY 141 SQM

AMIE



GROUND FLOOR



TOP FLOOR

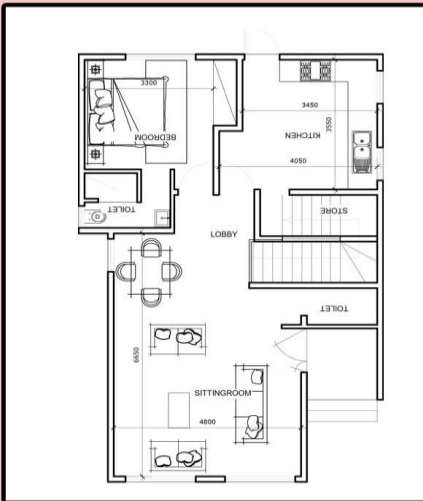
- BEDROOMS: 2
- BATHROOMS: 3
- LIVING ROOM : 1
- DINNING: 1
- KITCHEN: 1 PARTLY FITTED

PRICE LIST

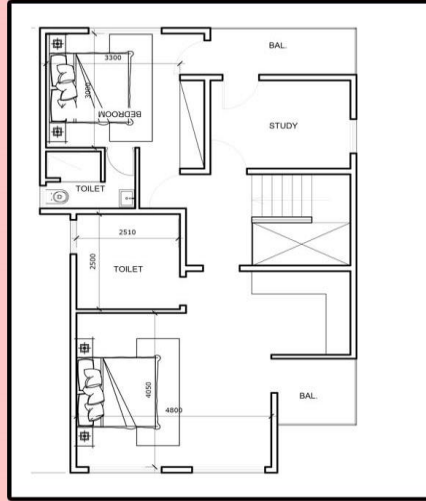
		2 Bed Amie - 141m2 Storey		
	PLOT SIZE	Price (GBP)	25%	Est. Monthly Repayment
BN 148	178.5	£77,584	£19,396	£869
BN 145	180.8	£77,684	£19,421	£870
BN 157	187	£77,951	£19,488	£873
BN 146 & 147	187.5	£77,973	£19,493	£873
BN 143	190.5	£78,102	£19,526	£875
BN 144	192	£78,167	£19,542	£875
BN 158	202	£78,598	£19,650	£880
BN 156	265	£81,317	£20,329	£911
BN 122	279	£81,921	£20,480	£917
BN 155	292	£82,482	£20,621	£924
BN 100	312	£83,345	£20,836	£933
BN 139 - 142	312.5	£83,367	£20,842	£934
BN 101	324	£83,863	£20,966	£939
BN 124 & 125	332	£84,208	£21,052	£943
BN 130 & 131	342	£84,640	£21,160	£948
BN 121	344.8	£84,761	£21,190	£949
BN 112	346	£84,813	£21,203	£950
BN 129	352	£85,072	£21,268	£953
BN 114	363	£85,546	£21,387	£958
BN 151 & 153	369	£85,805	£21,451	£961
BN 149	370	£85,848	£21,462	£961
BN 150	372	£85,935	£21,484	£962
BN 152	374	£86,021	£21,505	£963
BN 106 - 111	375	£86,064	£21,516	£964
BN 115 - 120	375	£86,064	£21,516	£964
BN 154	376	£86,107	£21,527	£964
BN 113	380.8	£86,314	£21,579	£967
BN 137	383.5	£86,431	£21,608	£968
BN 138	383.7	£86,440	£21,610	£968
BN 136	384.9	£86,491	£21,623	£969
BN 135	385	£86,496	£21,624	£969
BN 134	386	£86,539	£21,635	£969
BN 133	387	£86,582	£21,645	£970
BN 132	387.9	£86,621	£21,655	£970
BN 128	403.8	£87,307	£21,827	£978
BN 127	413	£87,704	£21,926	£982
BN 126	415	£87,790	£21,948	£983
BN 102	430	£88,438	£22,109	£990
BN 103	435	£88,653	£22,163	£993
BN 105	440	£88,869	£22,217	£995
BN 123	500	£91,458	£22,865	£1,024
BN 104	514	£92,062	£23,016	£1,031

3 BEDROOM STOREY 166 SQM

BINTA



GROUND FLOOR



TOP FLOOR

- BEDROOMS: 3
- BATHROOMS: 3 AND 1 GUESTS WASH ROOM
- LIVING ROOM : 1
- DINNING : 1
- KITCHEN: 1 PARTLY FITTED

PRICE LIST

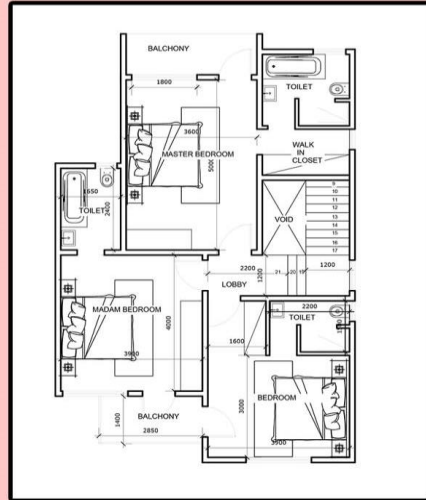
		3 Bed Binta - 166m2 Storey		
	PLOT SIZE	Price (GBP)	25%	Est. Monthly Repayment
BN 148	178.5	£89,466	£22,366	£1,002
BN 145	180.8	£89,565	£22,391	£1,003
BN 157	187	£89,832	£22,458	£1,006
BN 146 & 147	187.5	£89,854	£22,463	£1,006
BN 143	190.5	£89,983	£22,496	£1,008
BN 144	192	£90,048	£22,512	£1,008
BN 158	202	£90,480	£22,620	£1,013
BN 156	265	£93,198	£23,300	£1,044
BN 122	279	£93,803	£23,451	£1,050
BN 155	292	£94,364	£23,591	£1,057
BN 100	312	£95,227	£23,807	£1,066
BN 139 - 142	312.5	£95,248	£23,812	£1,067
BN 101	324	£95,744	£23,936	£1,072
BN 124 & 125	332	£96,090	£24,022	£1,076
BN 130 & 131	342	£96,521	£24,130	£1,081
BN 121	344.8	£96,642	£24,161	£1,082
BN 112	346	£96,694	£24,173	£1,083
BN 129	352	£96,953	£24,238	£1,086
BN 114	363	£97,427	£24,357	£1,091
BN 151 & 153	369	£97,686	£24,422	£1,094
BN 149	370	£97,730	£24,432	£1,094
BN 150	372	£97,816	£24,454	£1,095
BN 152	374	£97,902	£24,476	£1,096
BN 106 - 111	375	£97,945	£24,486	£1,097
BN 115 - 120	375	£97,945	£24,486	£1,097
BN 154	376	£97,988	£24,497	£1,097
BN 113	380.8	£98,196	£24,549	£1,100
BN 137	383.5	£98,312	£24,578	£1,101
BN 138	383.7	£98,321	£24,580	£1,101
BN 136	384.9	£98,373	£24,593	£1,102
BN 135	385	£98,377	£24,594	£1,102
BN 134	386	£98,420	£24,605	£1,102
BN 133	387	£98,463	£24,616	£1,103
BN 132	387.9	£98,502	£24,625	£1,103
BN 128	403.8	£99,188	£24,797	£1,111
BN 127	413	£99,585	£24,896	£1,115
BN 126	415	£99,671	£24,918	£1,116
BN 102	430	£100,319	£25,080	£1,123
BN 103	435	£100,535	£25,134	£1,126
BN 105	440	£100,750	£25,188	£1,128
BN 123	500	£103,340	£25,835	£1,157
BN 104	514	£103,944	£25,986	£1,164

**4 BEDROOM
STORY 176 SQM**

NYIMA



GROUND FLOOR



TOP FLOOR

- **BEDROOMS: 4**
- **MASTER BEDROOM WITH WALK-IN CLOSET**
- **BATHROOMS: 4 AND 1 GUESTS WASH ROOM**
- **LIVING ROOM : 1 AND DINNING : 1**
- **KITCHEN : 1 PARTLY FITTED**

PRICE LIST

		4 Bed Nyima - 176m2 Storey		
	PLOT SIZE	Price (GBP)	25%	Est. Monthly Repayment
BN 148	178.5	£94,800	£23,700	£1,062
BN 145	180.8	£94,899	£23,725	£1,063
BN 157	187	£95,167	£23,792	£1,066
BN 146 & 147	187.5	£95,188	£23,797	£1,066
BN 143	190.5	£95,318	£23,829	£1,067
BN 144	192	£95,383	£23,846	£1,068
BN 158	202	£95,814	£23,954	£1,073
BN 156	265	£98,533	£24,633	£1,103
BN 122	279	£99,137	£24,784	£1,110
BN 155	292	£99,698	£24,924	£1,116
BN 100	312	£100,561	£25,140	£1,126
BN 139 - 142	312.5	£100,583	£25,146	£1,126
BN 101	324	£101,079	£25,270	£1,132
BN 124 & 125	332	£105,653	£26,413	£1,183
BN 130 & 131	342	£105,006	£26,251	£1,176
BN 121	344.8	£101,976	£25,494	£1,142
BN 112	346	£102,028	£25,507	£1,143
BN 129	352	£102,287	£25,572	£1,145
BN 114	363	£102,762	£25,690	£1,151
BN 151 & 153	369	£103,021	£25,755	£1,154
BN 149	370	£103,064	£25,766	£1,154
BN 150	372	£103,150	£25,788	£1,155
BN 152	374	£103,237	£25,809	£1,156
BN 106 - 111	375	£103,280	£25,820	£1,157
BN 115 - 120	375	£103,280	£25,820	£1,157
BN 154	376	£103,323	£25,831	£1,157
BN 113	380.8	£103,530	£25,882	£1,159
BN 137	383.5	£103,647	£25,912	£1,161
BN 138	383.7	£103,655	£25,914	£1,161
BN 136	384.9	£103,707	£25,927	£1,161
BN 135	385	£103,711	£25,928	£1,161
BN 134	386	£103,754	£25,939	£1,162
BN 133	387	£103,798	£25,949	£1,162
BN 132	387.9	£103,836	£25,959	£1,163
BN 128	403.8	£104,523	£26,131	£1,170
BN 127	413	£104,920	£26,230	£1,175
BN 126	415	£105,006	£26,251	£1,176
BN 102	430	£105,653	£26,413	£1,183
BN 103	435	£105,869	£26,467	£1,186
BN 105	440	£106,085	£26,521	£1,188
BN 123	500	£108,674	£27,168	£1,217
BN 104	514	£109,278	£27,320	£1,224

CONTACT US



THE GAMBIA

Email: info@tafafricaglobal.com

Tel: +220 776 - 2333

Tel: +220 376 - 2333

Address: 17-19 Kaira Avenue, Madiba Mall,
Brufut Gardens Estate, P.O. Box 121, The
Gambia

NIGERIA

Email: info@rivtaf.com

Tel: +2348058094194

Address: RIVTAF Golf Estate, End of Peter
Odili Road, Trans Amadi, Port Harcourt,
Rivers State, Nigeria

www.tafafricaglobal.com