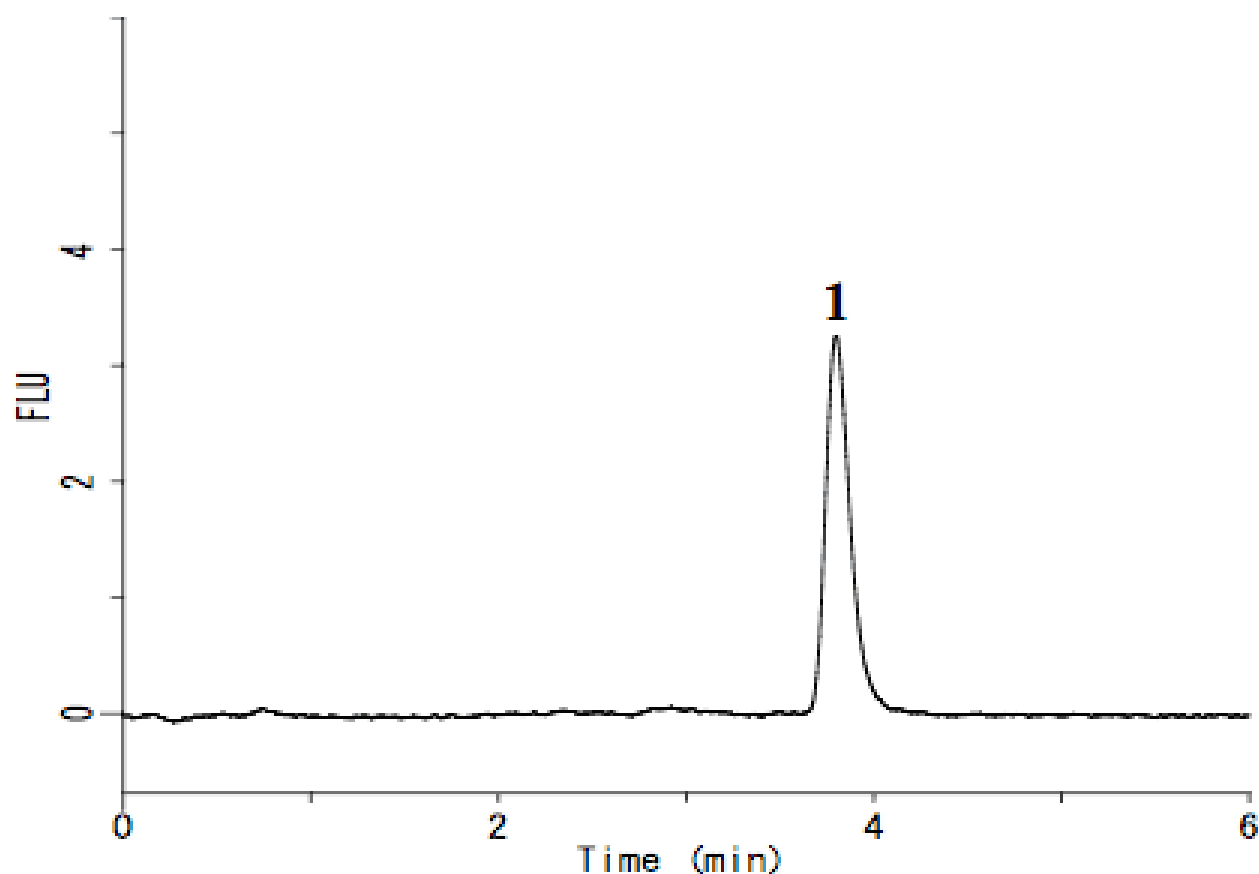


Analysis of Formaldehyde (Ditected by Post-Column Method)

Data No. LA577-0696



System :GL-7400 system

Solutes :1. Formaldehyde (0.1 mg/L)

Column :Inertsil ODS-3 (5 μ m, 250 x 4.6 mm I.D.)

Column Cat. No.:

Eluent :6 mM Na₂HPO₄ (pH 2.1; H₃PO₄)

Flow rate :1.0 mL/min

Col. Temp. :40 °C

Detection :FL Em 445 nm Ex 505 nm (GL-7453A FL Detector)

Injection Vol. :10 μ L

Sample :