



Sienna Residence

PROPOSED 4-STOREY RESIDENTIAL APARTMENT AND SUPPORTING FACILITIES ON LOT 945, BLOCK 6, MATANG LAND DISTRICT WITH STRATA TITLE AT JALAN MATANG, KUCHING.

PREPARED BY:

ARKI-SIGAT
ARCHITECTURE • INTERIOR DESIGN
LANDSCAPE • PLANNING
2nd FLOOR, LOT 3638, LORONG 2 OFF JALAN ROCK,
TAMAN TIMBERLAND, 93200 KUCHING, SARAWAK.
TEL: 082-255001 FAX: 082-256001 E-MAIL: arksigat@gmail.com



LOCALITY PLAN

SIENNA RESIDENCE - PROPOSED 4-STOREY RESIDENTIAL APARTMENT AND SUPPORTING FACILITIES ON LOT 945, BLOCK 6, MATANG LAND DISTRICT WITH STRATA TITLE AT JALAN MATANG, KUCHING.

LEGEND:

LAND SIZE : 16.54 ACRES (APPROX.)

BLOCK 1 (TYPE A) : PROPOSED 4 STOREY AFFORDABLE APARTMENT
TOTAL APARTMENT UNITS: 128 UNITS

BLOCK 2 & 3 (TYPE B) : PROPOSED 4 STOREY AFFORDABLE APARTMENT
TOTAL APARTMENT UNITS : 192 UNITS

BLOCK 4&5 (TYPE C) : PROPOSED 4 STOREY AFFORDABLE APARTMENT
TOTAL APARTMENT UNITS : 178 UNITS

K : PROPOSED KINDERGARTEN & MANAGEMENT OFFICE

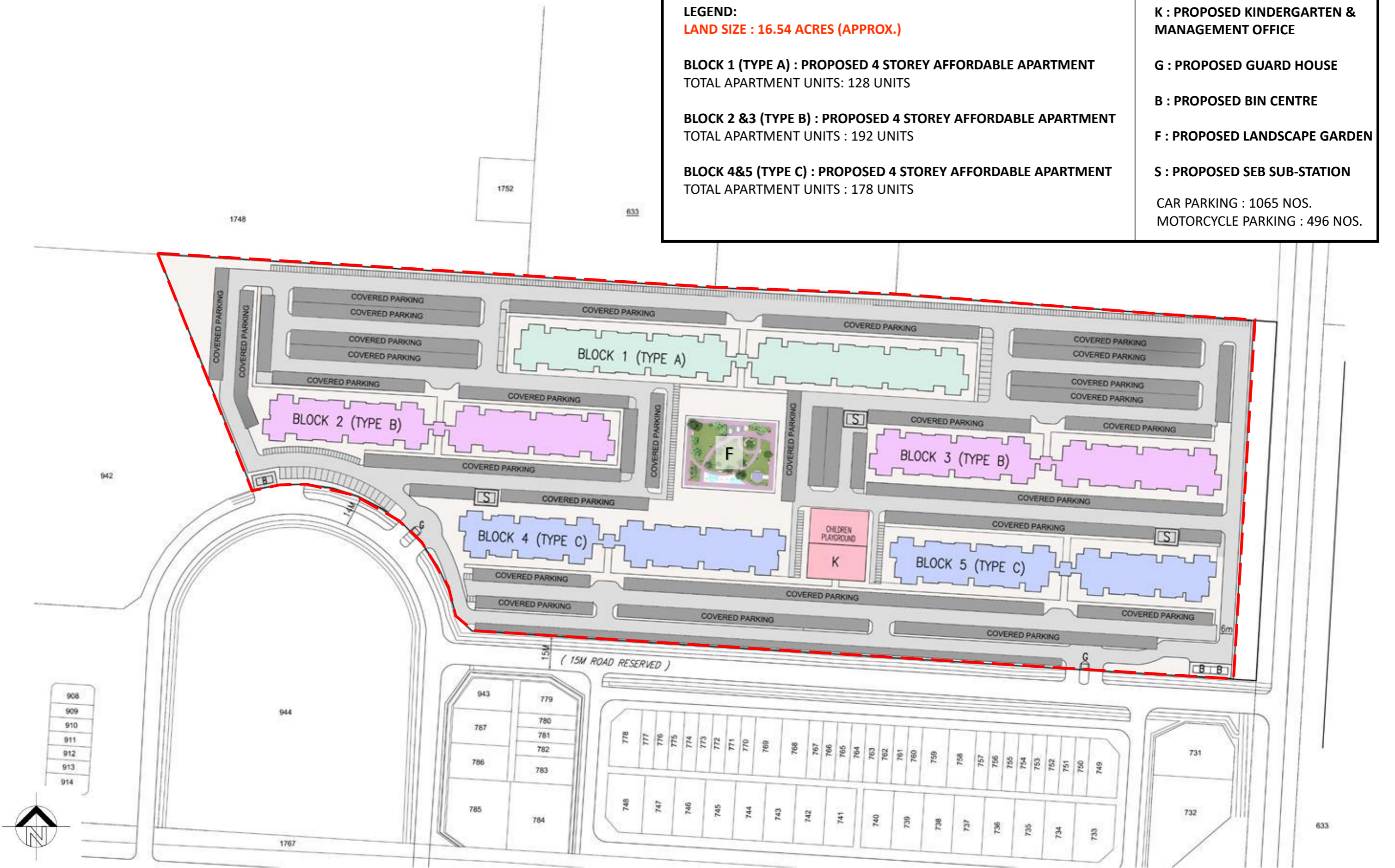
G : PROPOSED GUARD HOUSE

B : PROPOSED BIN CENTRE

F : PROPOSED LANDSCAPE GARDEN

S : PROPOSED SEB SUB-STATION

CAR PARKING : 1065 NOS.
MOTORCYCLE PARKING : 496 NOS.



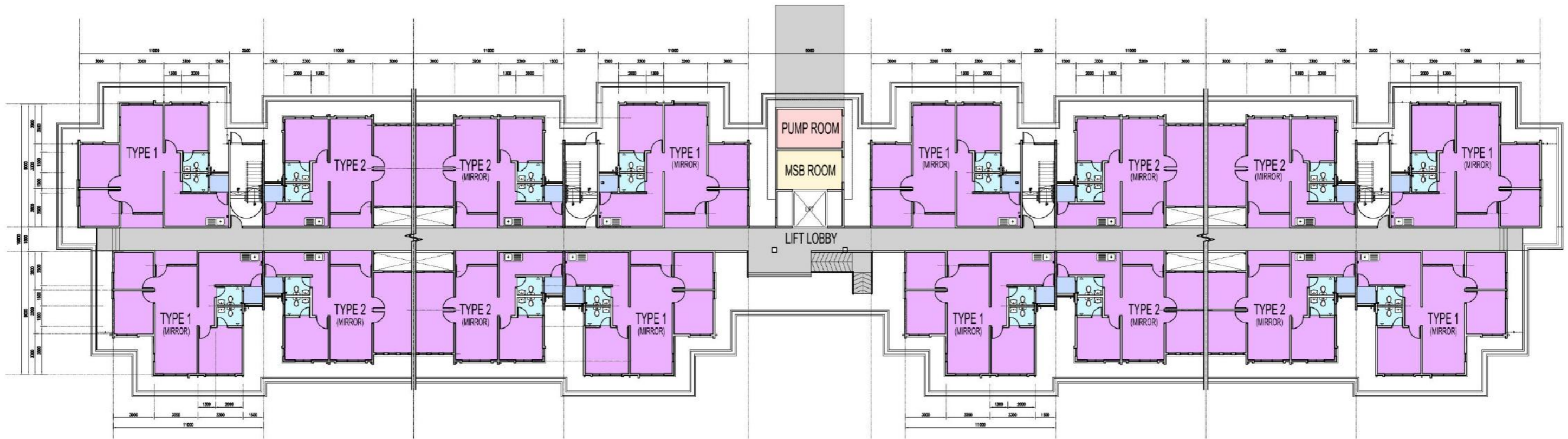
SITE PLAN

SIENNA RESIDENCE - PROPOSED 4-STOREY RESIDENTIAL APARTMENT AND SUPPORTING FACILITIES ON LOT 945, BLOCK 6, MATANG LAND DISTRICT WITH STRATA TITLE AT JALAN MATANG, KUCHING.

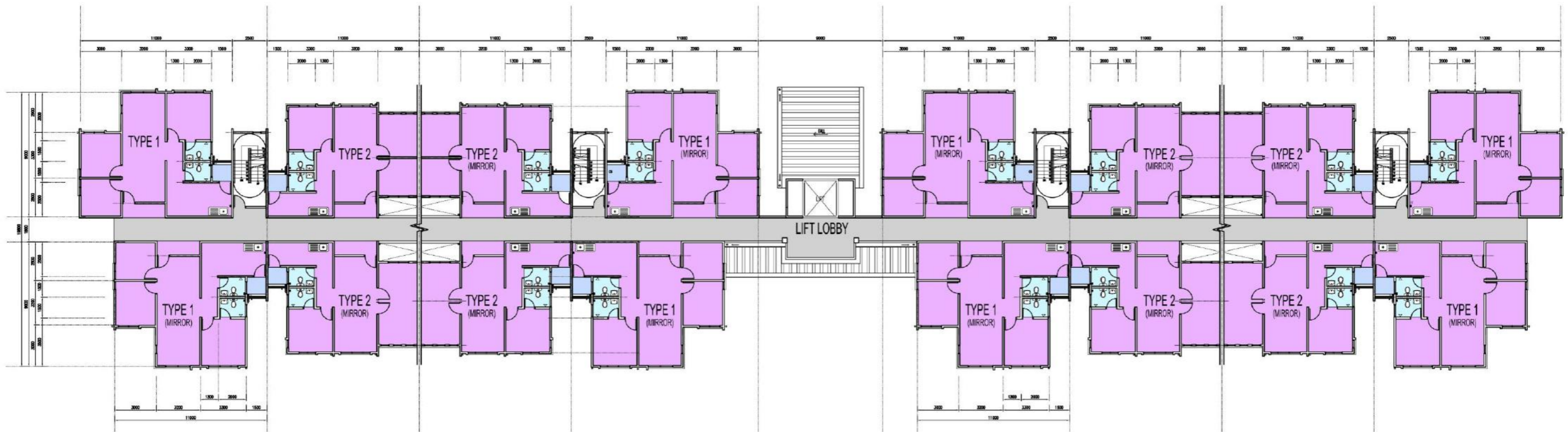


AERIAL VIEW

SIENNA RESIDENCE - PROPOSED 4-STOREY RESIDENTIAL APARTMENT AND SUPPORTING FACILITIES ON LOT 945, BLOCK 6, MATANG LAND DISTRICT WITH STRATA TITLE AT JALAN MATANG, KUCHING.



⊖ TYPICAL GROUND FLOOR PLAN
SCALE 1 : 300



⊖ TYPICAL 2ND-4TH FLOOR PLAN
SCALE 1 : 300

TYPICAL OVERALL FLOOR PLAN

SIENNA RESIDENCE - PROPOSED 4-STOREY RESIDENTIAL APARTMENT AND SUPPORTING FACILITIES ON LOT 945, BLOCK 6, MATANG LAND DISTRICT WITH STRATA TITLE AT JALAN MATANG, KUCHING.



VIEW TOWARDS BLOCK 1 – TYPE A FACADE

SIENNA RESIDENCE - PROPOSED 4-STOREY RESIDENTIAL APARTMENT AND SUPPORTING FACILITIES ON LOT 945, BLOCK 6, MATANG LAND DISTRICT WITH STRATA TITLE AT JALAN MATANG, KUCHING.



VIEW TOWARDS BLOCK 1 – TYPE A ENTRANCE

SIENNA RESIDENCE - PROPOSED 4-STOREY RESIDENTIAL APARTMENT AND SUPPORTING FACILITIES ON LOT 945, BLOCK 6, MATANG LAND DISTRICT WITH STRATA TITLE AT JALAN MATANG, KUCHING.



VIEW TOWARDS BLOCK 2, 3, 4 & 5 – TYPE B & C FACADE

SIENNA RESIDENCE - PROPOSED 4-STOREY RESIDENTIAL APARTMENT AND SUPPORTING FACILITIES ON LOT 945, BLOCK 6, MATANG LAND DISTRICT WITH STRATA TITLE AT JALAN MATANG, KUCHING.



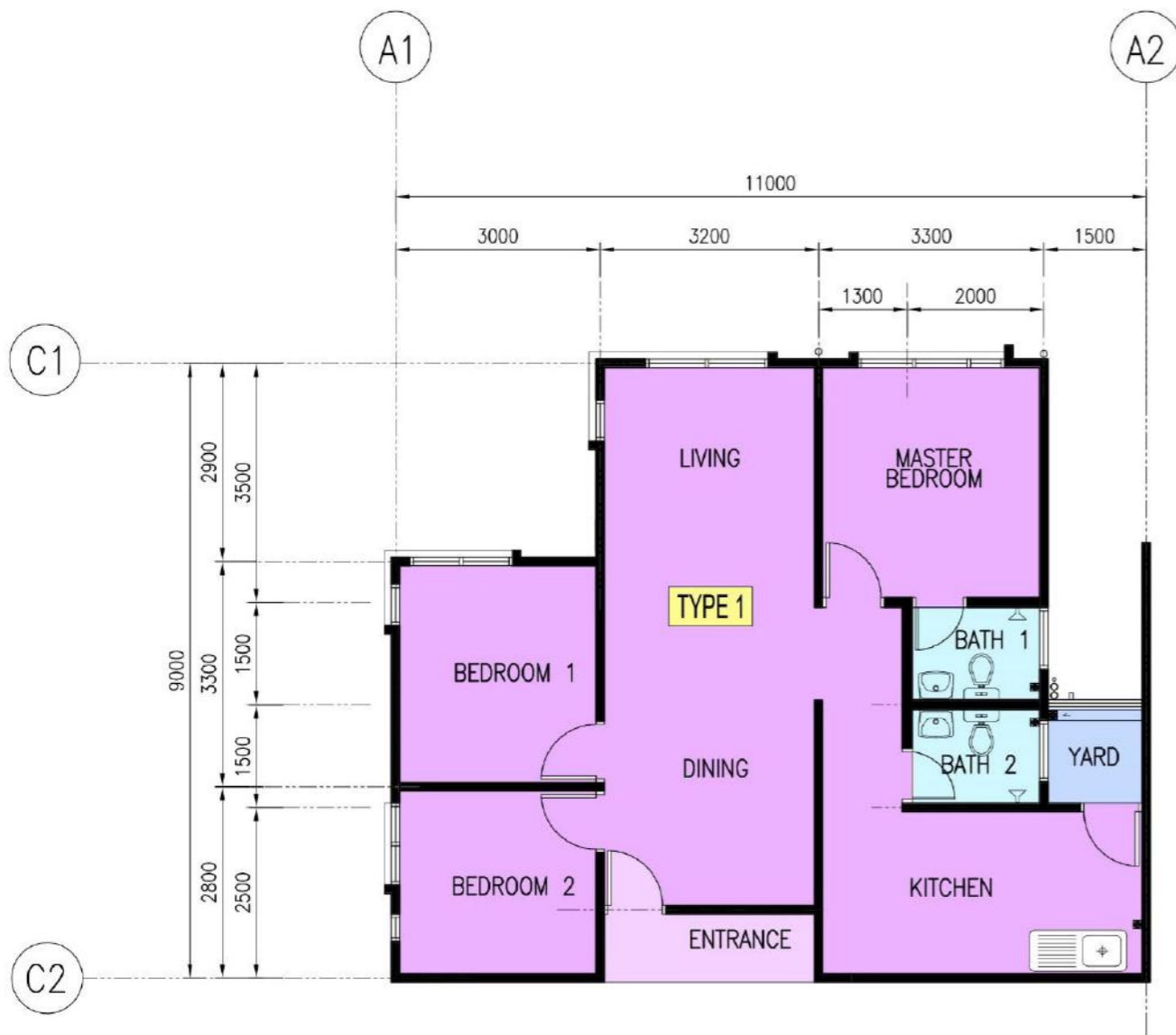
VIEW TOWARDS BLOCK 2, 3, 4 & 5 – TYPE B & C ENTRANCE

SIENNA RESIDENCE - PROPOSED 4-STOREY RESIDENTIAL APARTMENT AND SUPPORTING FACILITIES ON LOT 945, BLOCK 6, MATANG LAND DISTRICT WITH STRATA TITLE AT JALAN MATANG, KUCHING.



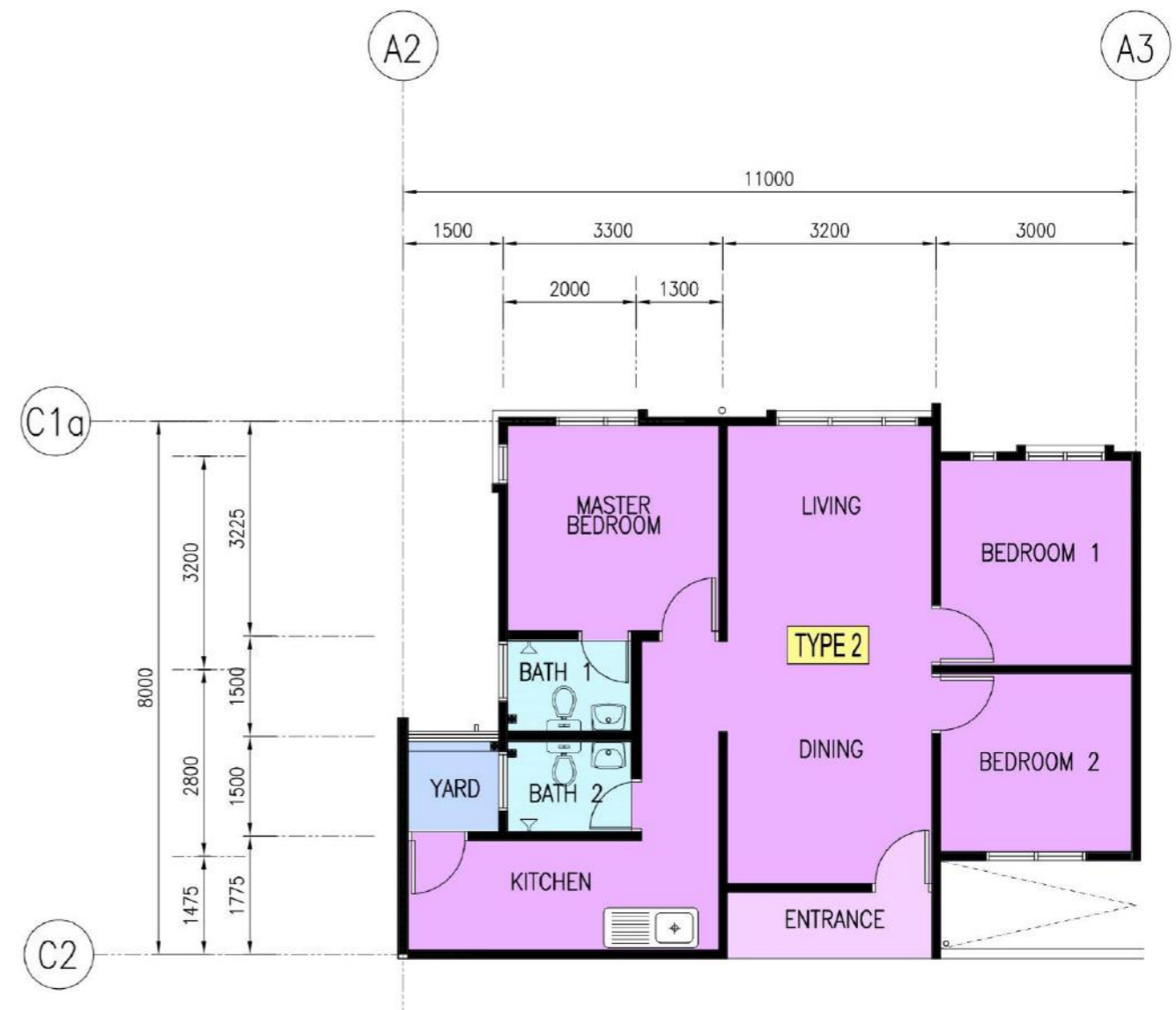
VIEW TOWARDS BLOCK 1 & 3 – TYPE A & B FACADE

SIENNA RESIDENCE - PROPOSED 4-STOREY RESIDENTIAL APARTMENT AND SUPPORTING FACILITIES ON LOT 945, BLOCK 6, MATANG LAND DISTRICT WITH STRATA TITLE AT JALAN MATANG, KUCHING.



TOTAL NO. OF TYPE 1 UNITS = 32 UNITS
 TYPE 1 TOTAL FLOOR AREA = 850 SQ. FT

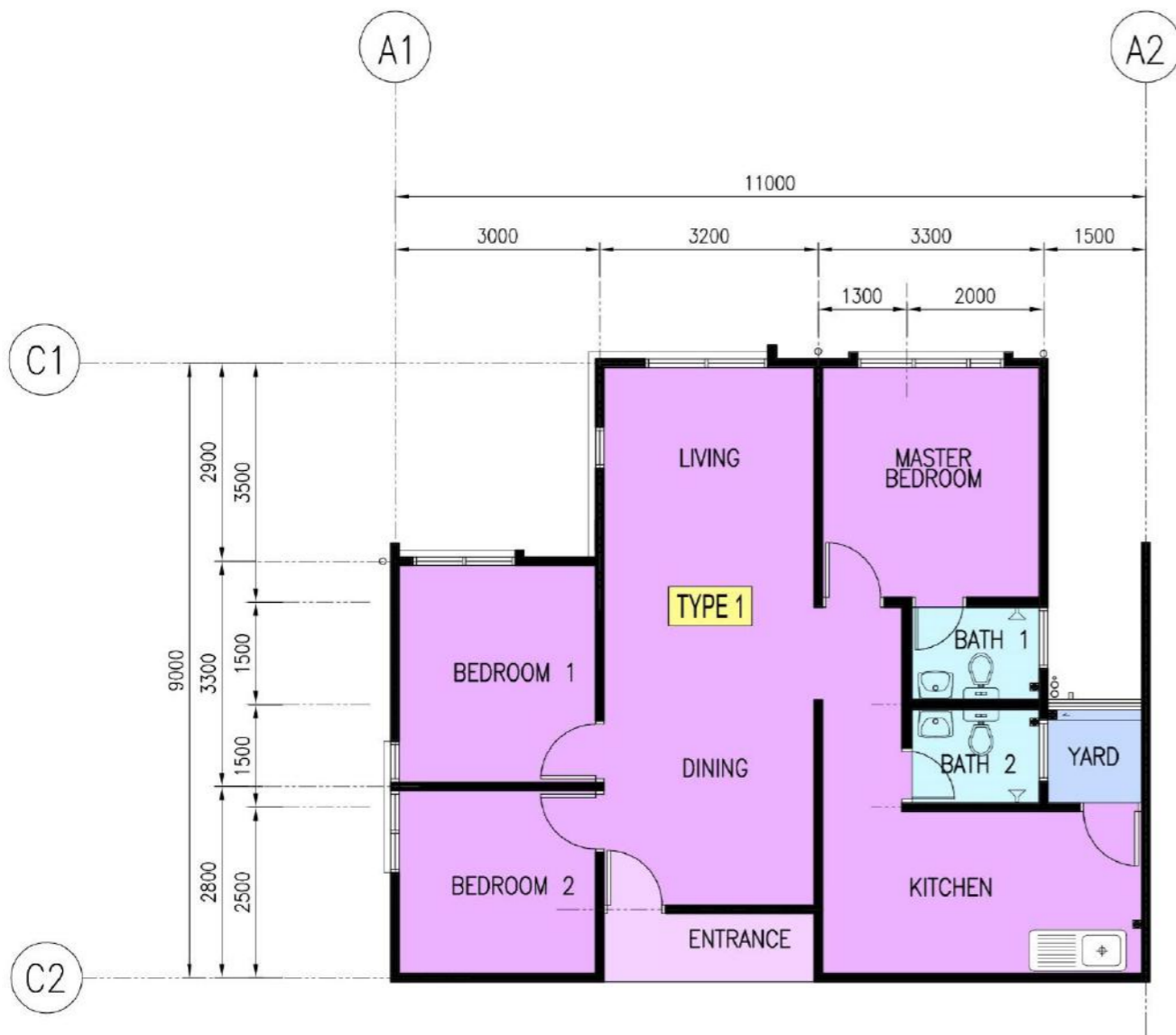
— TYPICAL FLOOR PLAN (CORNER UNIT)
 — SCALE 1 : 100



TOTAL NO. OF TYPE 2 UNITS = 96 UNITS
 TYPE 2 = 771 SQ.FT

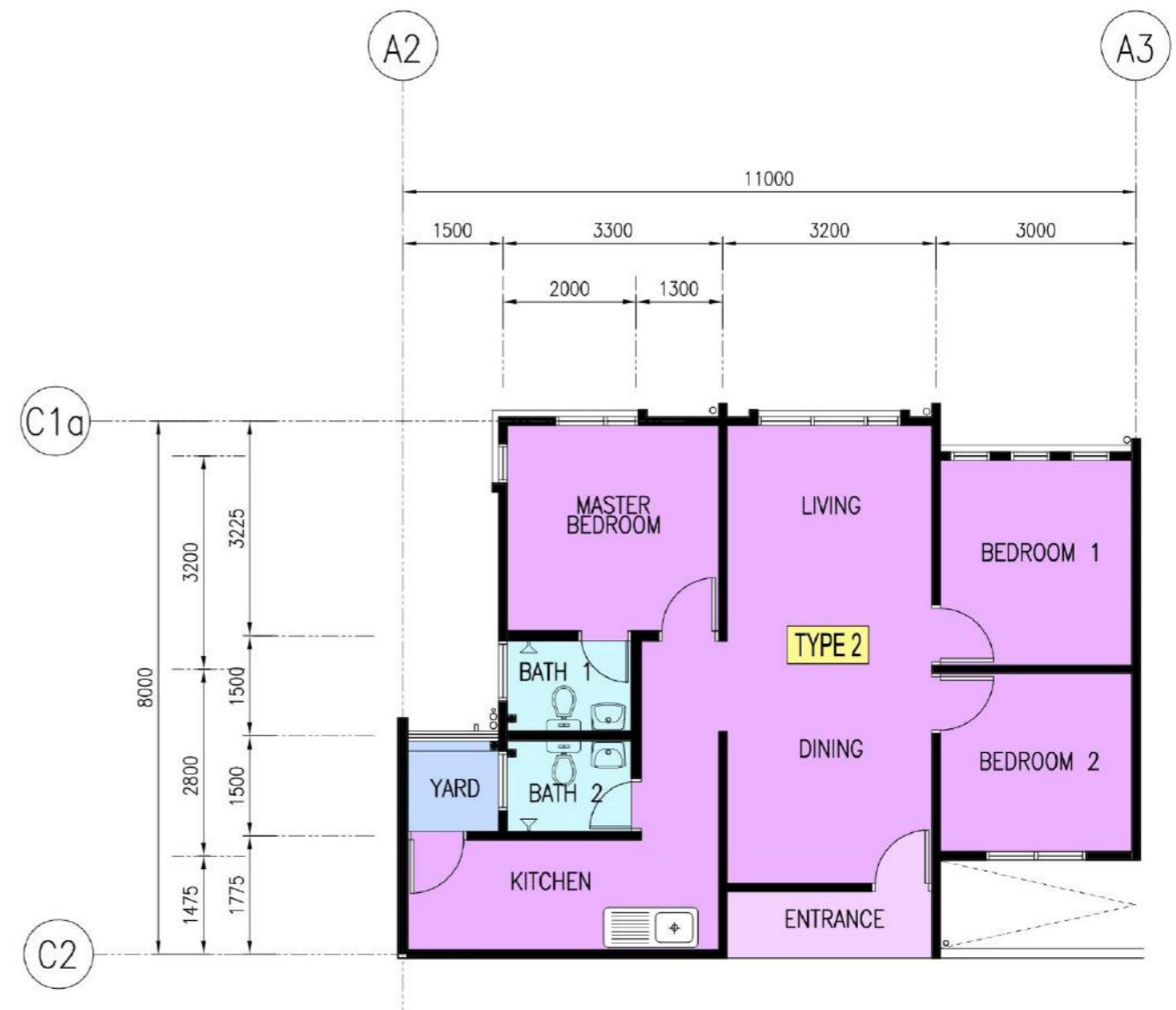
— TYPICAL FLOOR PLAN (INTERMEDIATE UNIT)
 — SCALE 1 : 100

BLOCK 1 (TYPE A) – TYPICAL FLOOR PLAN



TOTAL NO. OF TYPE 1 UNITS = 32 UNITS
 TYPE 1 TOTAL FLOOR AREA = 850 SQ. FT

— TYPICAL FLOOR PLAN (CORNER UNIT)
 — SCALE 1 : 100

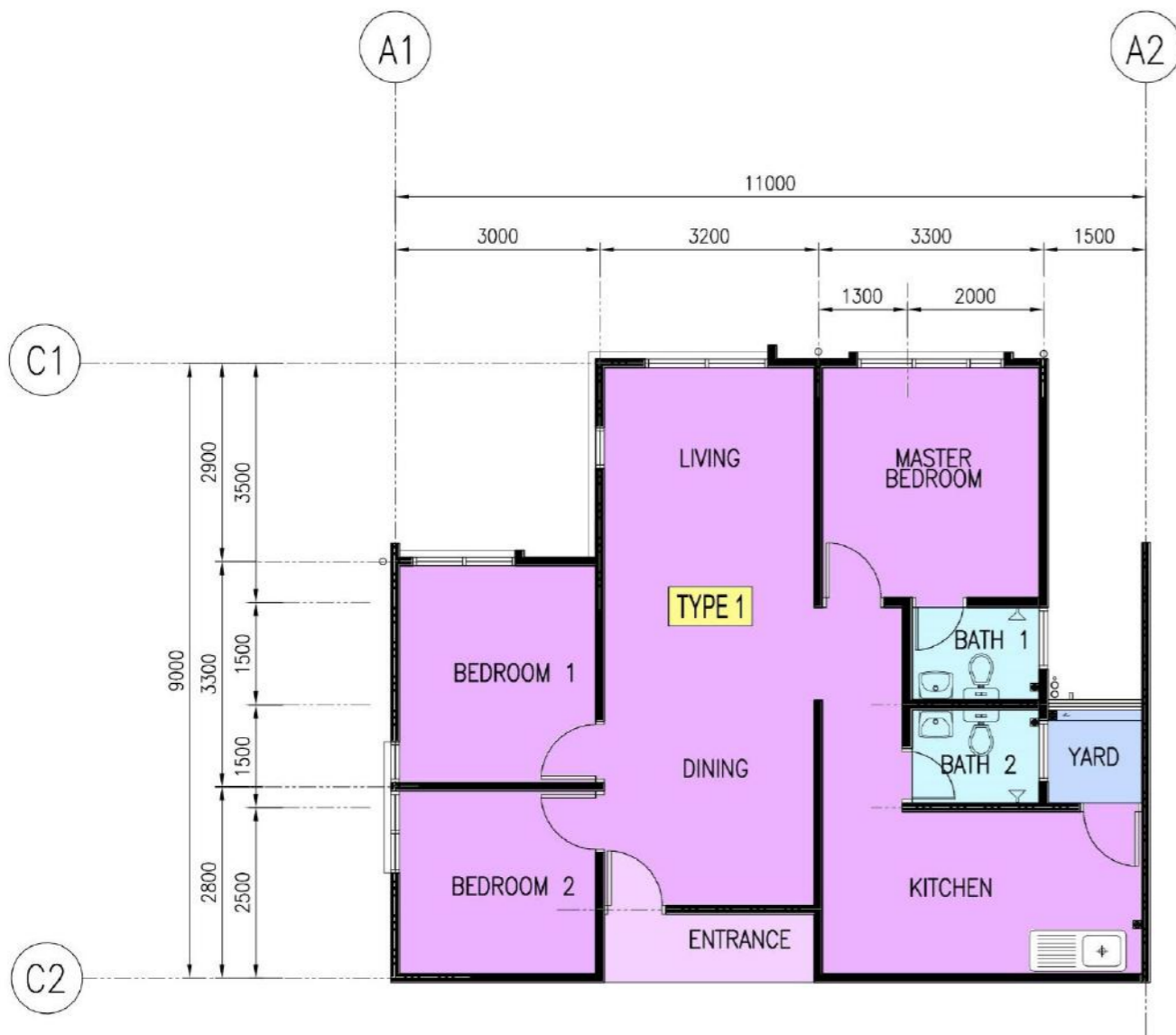


TOTAL NO. OF TYPE 2 UNITS = 64 UNITS
 TYPE 2 = 771 SQ. FT

— TYPICAL FLOOR PLAN (INTERMEDIATE UNIT)
 — SCALE 1 : 100

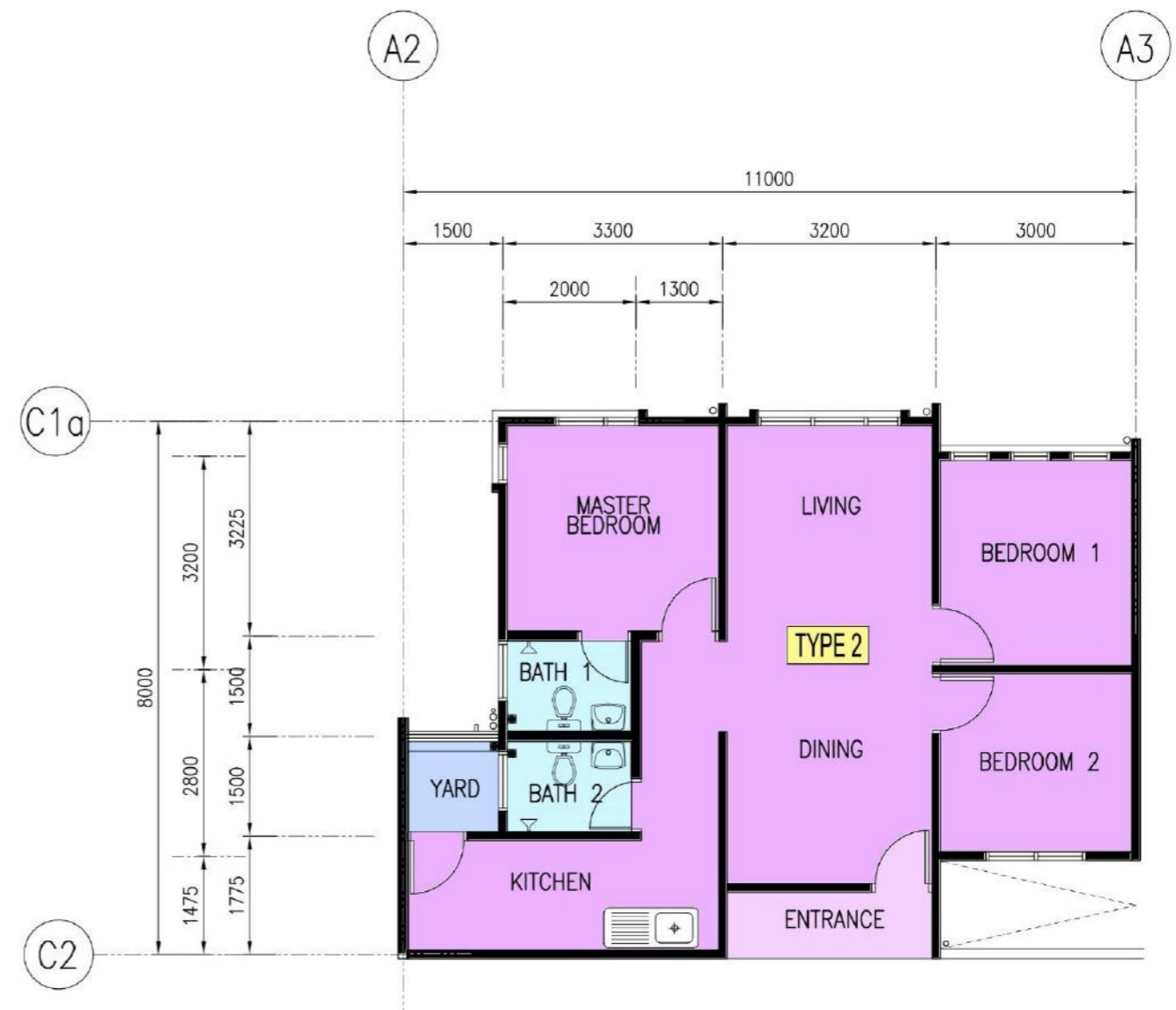
BLOCK 2 & 3 (TYPE B) – TYPICAL FLOOR PLAN

SIENNA RESIDENCE - PROPOSED 4-STOREY RESIDENTIAL APARTMENT AND SUPPORTING FACILITIES ON LOT 945, BLOCK 6, MATANG LAND DISTRICT WITH STRATA TITLE AT JALAN MATANG, KUCHING.



TOTAL NO. OF TYPE 1 UNITS = 32 UNITS
 TYPE 1 TOTAL FLOOR AREA = 850 SQ. FT

— TYPICAL FLOOR PLAN (CORNER UNIT)
 — SCALE 1 : 100



TOTAL NO. OF TYPE 2 UNITS = 56 UNITS
 TYPE 2 = 771 SQ.FT

— TYPICAL FLOOR PLAN (INTERMEDIATE UNIT)
 — SCALE 1 : 100

BLOCK 4 & 5 (TYPE C) – TYPICAL FLOOR PLAN

SIENNA RESIDENCE - PROPOSED 4-STOREY RESIDENTIAL APARTMENT AND SUPPORTING FACILITIES ON LOT 945, BLOCK 6, MATANG LAND DISTRICT WITH STRATA TITLE AT JALAN MATANG, KUCHING.



PERBADANAN PEMBANGUNAN PERUMAHAN
Housing Development Corporation



Wisma Sultan Tengah, Jalan Sukma, Peti Surat 1504,
Petra Jaya, 93050 Kuching, Sarawak.
Tel: 082-444381 Fax:448133

BORANG TEMPAHAN RMM MATANG BATU 5 SIENNA

No. Petak :

YURAN TEMPAHAN : RM1,000.00 (RINGGIT MALAYSIA SATU RIBU SAHAJA)
YURAN CAJ GUAMAN : RM2,500.00 (RINGGIT MALAYSIA DUA RIBU LIMA RATUS SAHAJA)
**Bayaran hanya boleh dibuat di Kaunter Bayaran Pejabat HDC sahaja*

KETERANGAN PEMBELI

Nama Penuh Pembeli :

No. Kad Pengenalan :

Pekerjaan :

Alamat Surat Menyurat :

.....

No. Tel :

Pendapatan Kasar Isi Rumah (pemohon/pasangan) : RM

Sumber Pinjaman : Bank Federal Loan State Loan

Nama Pembeli Bersama :

No. Kad Pengenalan :

Hubungan Dengan Pembeli :

KETERANGAN HARTANAH : JENIS PETAK

Item	Keluasan Petak	Tengah	Tepi
		<input type="checkbox"/>	<input type="checkbox"/>
		Lebih kurang 771 kaki persegi	Lebih Kurang 850 kaki persegi
1	Harga Jualan (tidak termasuk pemasangan Elektrik dan Air)	RM285,000.00	RM295,000.00
2	Bayaran Penyelenggaraan (sebulan)		
(i)	Kos Peyelenggaraan	RM100.00	RM120.00
(ii)	Kos `Sinking Fund`	RM10.00	RM12.00
	Jumlah Kos Penyelenggaraan	RM110.00	RM132.00
3	Kelayakan Tempat Letak Kereta (Berbumbung)	1 Lot	

**TERMA DAN SYARAT
(INI ADALAH SEBAHAGIAN DARIPADA SURAT TAWARAN)**

1. Tempahan adalah berdasarkan syarat-syarat berikut :-
 - i. Tuan/Puan dikehendaki untuk menjelaskan bayaran Yuran Tempahan berjumlah RM1,000.00 dan Caj Guaman berjumlah RM2,500.00 dalam tempoh tujuh (7) hari dari tarikh surat tawaran ini.
 - ii. Bayaran yuran tempahan :-
 - (a) **TIDAK AKAN DIKEMBALIKAN** sekiranya pembeli menolak tawaran setelah pinjaman diluluskan;
 - (b) **TIDAK AKAN DIKEMBALIKAN** sekiranya pemohon gagal mematuhi syarat-syarat yang ditetapkan oleh pihak HDC;
 - (c) **AKAN DIKEMBALIKAN** sekiranya pemohon gagal mendapat pinjaman dan perlu mengemukakan surat pengesahan penolakan dari institusi kewangan.
 - iii. Sila kemukakan salinan surat kelulusan pinjaman dalam tempoh satu (1) bulan daripada tarikh Borang Tempahan kepada pihak HDC untuk tindakan selanjutnya.
 - iv. Tuan/Puan juga dikehendaki untuk mendapatkan pinjaman perumahan daripada institusi kewangan bagi membiayai pembelian rumah ini dan seterusnya menandatangani **Surat Perjanjian Jual Beli** dan **Surat Akuan Berkanun [Statutory Declaration]** dengan panel peguam HDC dalam **tempoh 14 hari** daripada tarikh penerimaan surat kelulusan pinjaman pembeli.
 - v. Penyambungan bekalan elektrik dan air adalah secara berasingan dan ditanggung sendiri oleh tuan/puan. Tuan/Puan dikehendaki untuk membayar sendiri penyambungan bekalan elektrik dengan pihak SESCO dan bekalan air dengan pihak Lembaga Air Kuching.
2. Tuan/Puan adalah dinasihatkan supaya mematuhi syarat-syarat di atas dan pihak HDC akan membatalkan tawaran tuan/puan tanpa sebarang notis jika tuan/puan gagal mematuhinya. Tawaran rumah berkenaan akan ditawarkan kepada pemohon yang berdaftar dengan HDC tanpa persetujuan tuan/puan.

Tandatangan Pembeli :

Nama Pembeli :

Tarikh :

Disah Oleh (Pegawai HDC) :

Nama Pegawai :

Tarikh :

LEGEND:

LAND SIZE : 16.54 ACRES (APPROX.)

TOTAL NO. OF APARTMENT UNITS (5 BLOCKS) : 496 UNITS

BLOCK 1 (TYPE A) : PROPOSED 4 STOREY AFFORDABLE APARTMENT
TOTAL APARTMENT UNITS: 128 UNITS

BLOCK 2 & 3 (TYPE B) : PROPOSED 4 STOREY AFFORDABLE APARTMENT
TOTAL APARTMENT UNITS : 192 UNITS

BLOCK 4 & 5 (TYPE C) : PROPOSED 4 STOREY AFFORDABLE APARTMENT
TOTAL APARTMENT UNITS : 176 UNITS

K : PROPOSED KINDERGARTEN & MANAGEMENT OFFICE

S : PROPOSED SEB SUB-STATION (3 nos.)

G : PROPOSED GUARD HOUSE (2 nos.)

B : PROPOSED BIN CENTRE (3 nos.)

R : PROPOSED RETENTION POND

CAR PARKING : 1052 NOS.

VISITOR PARKING : 60 NOS.

MOTORCYCLE PARKING : 496 NOS.



SITE PLAN

SIENNA RESIDENCE - PROPOSED 4-STOREY RESIDENTIAL APARTMENT AND SUPPORTING FACILITIES ON LOT 945, BLOCK 6, MATANG LAND DISTRICT WITH STRATA TITLE AT JALAN MATANG, KUCHING.