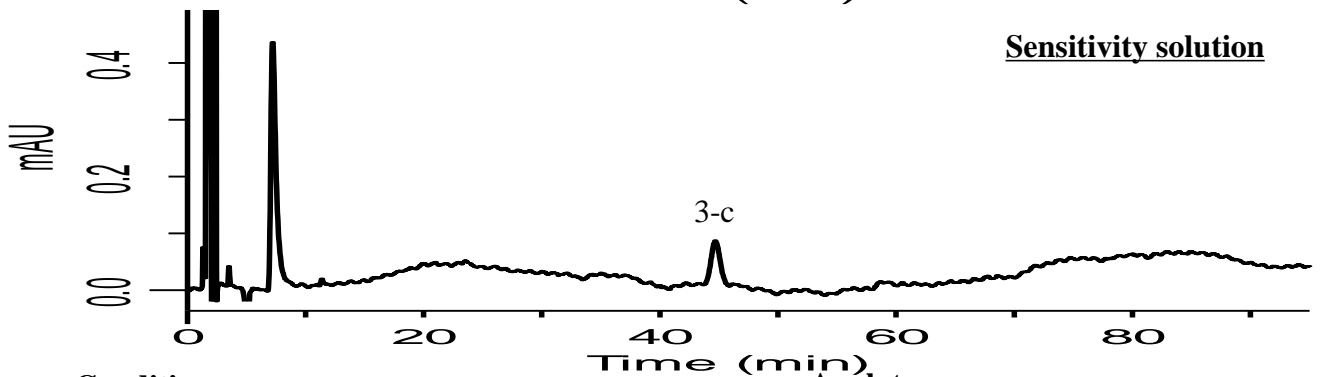
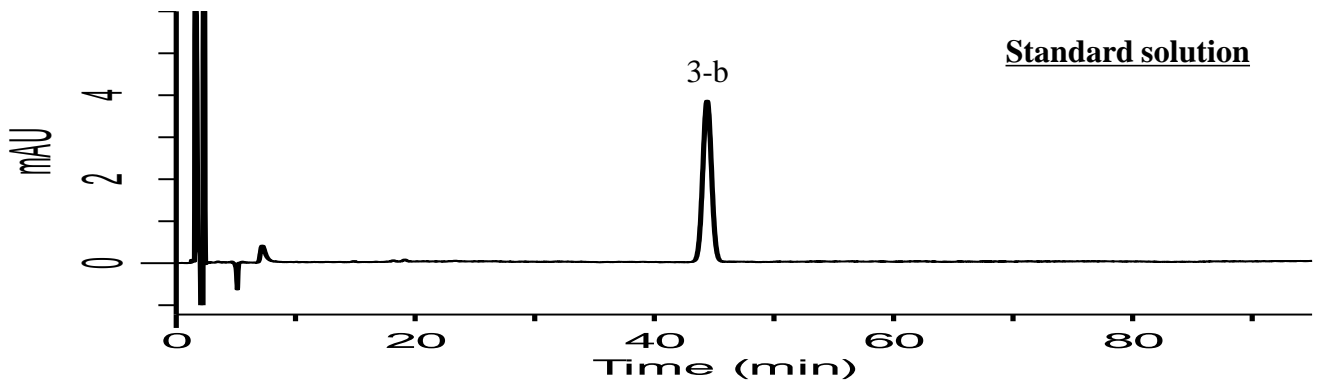
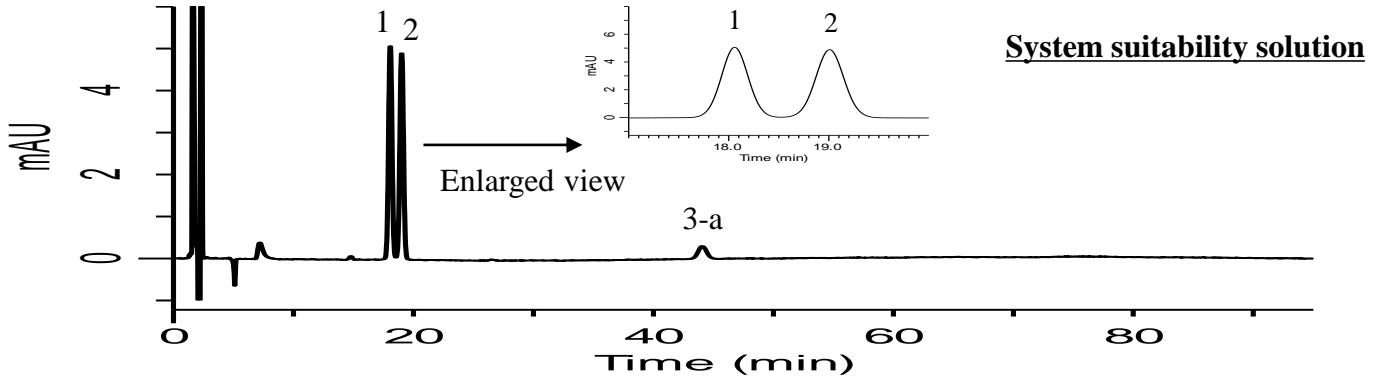


InertSearch for LC

Inertsil Applications

Analysis of Prasugrel hydrochloride

Data No. LB626-0812



Conditions

System : GL7700 HPLC system
Column : InertSustain C18
(3 μ m, 150 x 4.6 mm I.D.)
Column Cat. No. : 5020-07445
Eluent : A) CH₃CN
B) THF
C) Buffer*
A/B/C = 10/25/65, v/v/v

Flow Rate : 0.9 mL/min
Col. Temp. : 40 °C
Detection : UV 240 nm (UV7751 UV Detector)
Injection Vol. : 10 μ L
Sample : Standard

* 10 mM monobasic potassium phosphate in water.

Analyte

1. Desacetyl prasugrel diastereomer 1
2. Desacetyl prasugrel diastereomer 2
3. Prasugrel hydrochloride

Resolution (1,2) : 1.77
RSD of the peak area of 3-b (%) (n=6) : 1.05
S/N for 3-c : 21.1