

FALL 2025

THE FIELD JOURNAL



PEACEHAVEN



VIEW FROM THE LOFT

Dear Friends,

18 years ago, two families had a simple but powerful dream – to create a place where people with and without intellectual and developmental disabilities could find community. From that vision, a single home took root on a quiet stretch of North Carolina farmland. Our founders surrounded that home with rich programming, events, and lots of friends. As a result, today – after lots of sharing and asking and planning – we are thrilled to break ground on the next phase of our growth, a 20,000 square foot Community Center that will sit at the center of our 89-acre community.

This milestone represents far more than bricks and beams. It reflects the dedication, love, and perseverance of every person who has been part of Peacehaven’s journey – from our founding families and volunteers to our residents, staff, and supporters. Together, we have built something special: a place where belonging is not just a value, but a lived experience.

As construction begins, we look ahead with gratitude, purpose, and an abundance mindset. The Community Center will serve as the heart of our growing campus – a space for connection, creativity, and shared joy. It marks the beginning of an exciting new era for Peacehaven, one that will expand opportunities for learning, working, and living in community. Thank you for walking beside us on this journey. Your belief in what Peacehaven can be has made this moment possible – and the best is yet to come.



Phelps Sprinkle, CEO

“The Community Center will serve as the heart of our growing campus.”

View From The Loft	1
Different Together	2
The Promise of Peacehaven	6
Giving in Rythm	7
Expanding our Services	8
Volunteer Spotlight	9
It Takes a Village	10
Comfort Food	11
Here We Grow	12

DIFFERENT TOGETHER

From Campaign to Construction

MAIN ENTRANCE



Across North Carolina, nearly 70% of individuals with intellectual and developmental disabilities (I/DD) live at home or in institutional settings – often cut off from opportunity and community. When school-based services end at 21, families call what follows “The Cliff” – a moment marked by uncertainty and isolation.

TERRACE LAWN



Peacehaven was created to change that story. Because of your belief in a better way, we are building spaces that replace separation with connection and purpose.

Phase I of our vision is a comprehensive \$18.5 million investment laying the groundwork for an inclusive campus that will serve generations to come. It includes the 20,000-square-foot Community Center,

Event lawn, infrastructure for the full 89 acres, expanded farming operations, and a teaching greenhouse and new trail system. Together, these pieces form the physical and relational heart of Peacehaven.

Today, we have secured \$15.1 million toward that goal. Construction documents are complete, permits and infrastructure are in place, and on October 19th, we break ground. Closing the remaining \$3.4 million gap will complete all of Phase I and bring this long-envisioned community to life – fully funded and ready to serve. And as we finish this first chapter, we prepare to begin the next: Phase II, which will introduce a fully integrated housing village – the first of its kind in North Carolina.

Each feature of our Community Center was designed with purpose:

- Café & Training Kitchen – *creating jobs and skill-building in hospitality.*
- Classrooms & Co-Working Spaces – *hubs for discovery and collaboration.*
 - Recording Studio – *amplifying creativity and self-expression.*
- Adaptive Fitness & Therapy Studio – *promoting health and inclusion for all.*
 - Multi-Sensory Rooms – *calming environments that nurture confidence.*
- Large Event Hall & Terrace Lawn – *bringing neighbors together to celebrate.*

2

Q2
2023

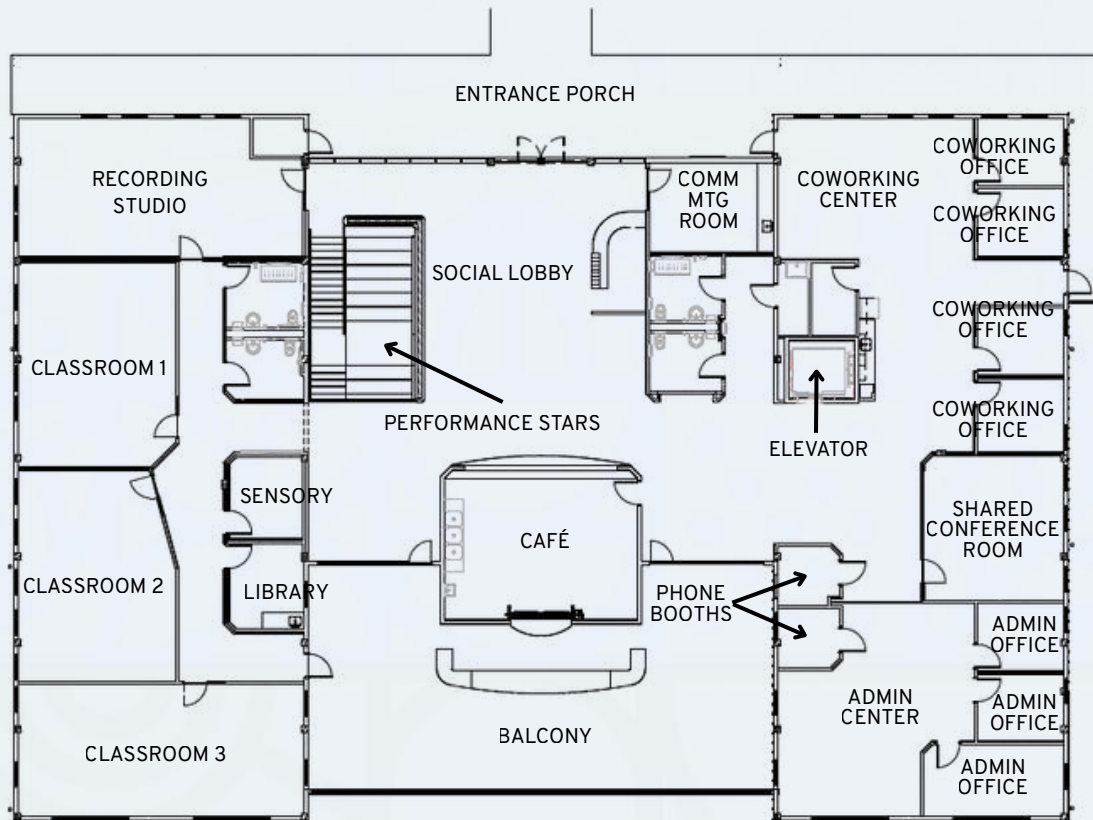
Water & Sewer
approval

Q4
2023

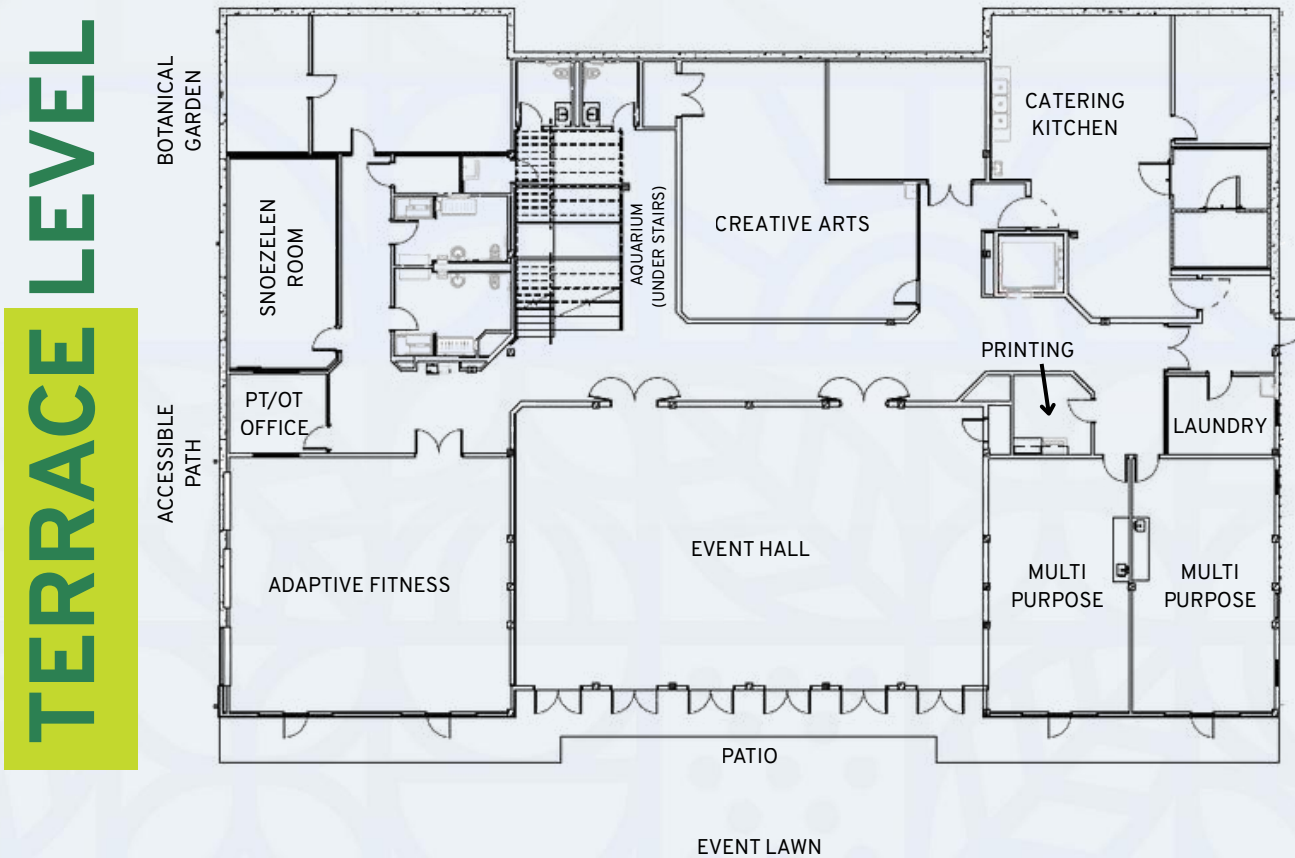
Carmina-Wood
Design selected

Q4
2023

Rezoning
approved



UPPER LEVEL



TERRACE LEVEL

Blum Construction
selected

Groundbreaking

Community Center
grand opening

Q4
2024

Q4
2025

Q1
2027

DIFFERENT TOGETHER

EVERY NAME HAS HELPED WRITE THIS STORY

Thanks to the generosity of the donors who have invested in our vision, Peacehaven has raised \$15.1 million, including 100% participation from our Board of Directors and Campaign Leadership Team. This remarkable achievement reflects the shared commitment of families, foundations, and public partners who know the strength of community.

\$1,000,000 and up

- Tim & Ellis Elliot
- The Graham Foundation
- SECU Foundation
- State of North Carolina
- Trillium Health Services

\$500,000 - \$999,999

- Estate of Sally Gillespie
- Royce & Jane Reynolds
- Pam & David Sprinkle

\$250,000 - \$499,999

- The Cannon Foundation
- David & Robin Green and Samuel P. Mandel Foundation

\$100,000 - \$249,999

- Anonymous (2)
- Blum Construction
- Ted & Teresa Chandler
- Buck & Cathy Cochran
- Dickson Foundation
- Gary & Kat McRae and McRae Industries
- Jim & Barbara North
- Bob Page
- Matt & Jamie Soule
- Kate & Phelps Sprinkle

\$50,000 - \$99,999

- Bell House
- Eric & Kathy Kraus

\$25,000 - \$49,999

- Edward M. Armfield Sr. Foundation
- Carter & Beth Davenport
- David Faust & Anne Casey
- Hooper Hardison
- John Lomax
- Jenny McCosley
- Joyce Powers
- Tim & Carolynn Rice
- Neal & Laura Sharpe
- Debra & Michael Simmons
- Tom & Linda Sloan
- Glenn & Kim Stall
- Kim & Gary Sue
- Beth Wright
- Andy Zimmerman

\$5,000 - \$9,999

- Tom Chandler
- Ashley & Kearns Davis
- Betty Jo Forrest
- Glen Raven, Inc.
- Chris & Beth Larson
- Robert & Kay Norris
- Leib & Lisa Oehmig
- Pat & Donna Piegari
- Mary & Roger Seigler
- William A. Stern Foundation
- Don Sylvester & Patti Gilmour-Sylvester

\$10,000 - \$24,999

- Dale & Nancy Allison
- Jenny Bradley
- Mike & Meredith Fisher
- Sharon & Jack Hicks
- George & Sara House

Up to \$4,999

- | | | | |
|---------------------------|-------------------------------|-----------------------------|---------------------------------------|
| • Lee Armstrong | • Bob Daly | • Celia Hooper | • Carolyn Plumb |
| • Mr & Mrs James B Barber | • Patrick Dunn | • F.D. & Mary Zeta Hornaday | • John Robinson |
| • Cary & Jim Bassett | • Jim & Karen Evans | • Ron Johnson | • Ben Saraceno |
| • Greg Beier | • Ralph Giordano | • Valerie Leschber | • Susan & Jerry Schwartz |
| • Rob & Elizabeth Belk | • Michael & Kelly Glick | • Zack Matheny | • David & Janie Sellers |
| • Marc & Janis Bush | • Greg & Tonya Goins | • Carl & Kathleen Mattacola | • Terri Shelton & Arthur Anastopoulos |
| • Linda Cogdall | • Anthony & Josephine Guarino | • Skip & Peg Moore | • Susan Stewart |
| • Randy & Louise Cox | • Bruce Hagedstedt | • Heidi Norwick | • Holt & Nick Wilson |
| | • Ross Harris | • Joe & Deirdra Piegari | • Richard & Alanna Worrell |

THE JOURNEY SO FAR

Your Impact In Motion

Opening in Spring 2027, the **Community Center** will welcome more than 30,000 visitors annually, creating daily opportunities for connection, learning, and inclusion for all. It will also provide meaningful, supportive employment for adults with intellectual and developmental disabilities, addressing an unemployment rate that exceeds 80% nationwide. The Center will be a space to belong, but also a place to work, to grow, and to thrive.



Architectural rendering of (l. to r.) co-working space, cafe, and welcome desk

The Center is the anchor for Phase I of our *Different Together* campaign, and as we raise the final \$3.4 million, we ask you to give “above and beyond” your crucial annual gift and to connect us to others who believe in the transformation that occurs when deep relationships are forged between people of all abilities. Thank you!

\$15.1 M raised

\$3.4 M to go

**\$18.5 M
GOAL**

SCAN HERE



MAKE YOUR PLEDGE IN SUPPORT OF THE **DIFFERENT TOGETHER** CAMPAIGN

PEACEHAVEN BOARD OF DIRECTORS

Heidi Norwick – Chair • Kearns Davis – Vice Chair

Tim Elliott – Treasurer • Carl Mattacola – Secretary

Greg Goins • Jenny McCosley • Mac Sims • Terri Shelton • Phelps Sprinkle • Nick Wilson • Andy Zimmerman

CAPITAL CAMPAIGN LEADERSHIP TEAM

Tim Rice – Chair

Teresa Chandler • Buck Cochran • Carter Davenport • Mike Fisher • Ross Harris

George House • John Lomax • Zack Matheny • Skip Moore • Heidi Norwick

COMMUNITY CENTER CONSTRUCTION COMMITTEE

Andy Zimmerman – Chair

Flay Blalock • Buck Cochran • Ken Elliott • John King • Shad Kroeger • Jenny McCosley • Mac Sims

THE PROMISE OF PEACEHAVEN

LET'S GROW SOMETHING BIG, TOGETHER.



As the season turns and we move from breaking ground to growing deeper roots, Peacehaven stands in a moment of transformation. The *Different Together* Capital Campaign has brought us to the threshold of something extraordinary – a Community Center that will serve as the heart of an inclusive campus for people of every ability. And while this building gives shape to our vision, it's people – and the support that sustains them – that bring the vision to life. That's where **The Promise of Peacehaven** begins.

This fall, we look ahead to the work that will endure long after construction ends – the daily cultivation of belonging, purpose, and possibility. Your gift to **The Promise of Peacehaven** ensure that our programs thrive, our Core Members (and future residents) continue to grow, and our outreach extends to more individuals and families in need of community.

This is the rhythm that keeps Peacehaven alive – “Seeds of Hope” in the spring and **The Promise of Peacehaven** in the fall – two seasons, one mission. Together, they form the lifeblood of this place: sustaining the work that happens all year long.

Your support at this time is vital. As we expand our programs, services, and community partnerships (more on that on page 10), your generosity ensures that Peacehaven remains strong, steady, and ready to serve.

Gifts can be made annually, seasonally, or as part of our Cultivators community – a group of recurring donors whose automated gifts provide the foundation for everything we do. Cultivators give at a rhythm that suits them – monthly, seasonally, annually – ensuring that our mission grows with their own philanthropic goals.

Every gift, every act of generosity, is a promise – a promise that Peacehaven will continue to be a place where people of all abilities can live, learn, work, and play.

Together, we're not just building Peacehaven.
We're keeping the promise of what it can become.

Your gift matters. Use the QR code to give now or set up a recurring gift as a Peacehaven Cultivator.



GIVING IN RHYTHM

If you wish to support Peacehaven with a recurring gift, becoming a **Cultivator** is a meaningful way to stay connected to our mission year-round. This group of donors is an ever-widening circle of friends that sustain the work of Peacehaven.

With each automated gift, you help create the dependable foundation that allows our people, plants, and programs to grow.

Benefits of being a Peacehaven Cultivator:

- Exclusive invitation to our annual Cultivator gathering
- Discounts on workshops and in our Online Store
- Free ticket to a workshop of your choosing
- Surprises and thank-yous each season
- A front-row seat to the story we write together

“

Peacehaven's mission is near and dear to our hearts because our nephew is an adult with autism. Being a Cultivator is how we can support the programs that bring purpose to all of us who believe it's okay to be different and embrace it. For us, giving to Peacehaven is another way to grow.

- Elisabeth & Wade Bramble

”



YEAR-END STRATEGIES FOR IMPACTFUL GIVING

Your giving fuels the heart of Peacehaven – creating belonging, purpose, and opportunity for people of all abilities.

Gifts of Stock or Appreciated Assets

Transfer stocks, bonds, or mutual funds directly to Peacehaven to potentially reduce capital gains taxes.

Deadline: December 15, 2025

Gifts from Retirement Accounts

If you're 70½ or older, you can make a Qualified Charitable Distribution (QCD) of up to \$105,000 from your IRA – a simple, tax-wise way to give.

Checks or Credit Card Gifts

Postmarked by December 31, 2025, and mailed to:

Peacehaven Farm
1458 NC Highway 61
Whitsett, NC 27377

Or give online anytime:

peacehavenfarm.org/donate

Recurring Gifts

Set up a monthly, quarterly, or seasonal ACH or card transaction to become a Cultivator – providing steady support that sustains our mission all year long.

For inquiries on any of these giving strategies, contact Cory Phillips, Director of Advancement:

(336) 404-3296 or

cory.phillips@peacehavenfarm.org

EXPANDING WHAT'S POSSIBLE:

Peacehaven's Growing Programs & Services

Peacehaven is entering an exciting new chapter. For the first time, we are officially a North Carolina Medicaid provider, expanding our ability to serve individuals with intellectual and developmental disabilities (I/DD) and their families across the region.

Through the Innovations Waiver and 1915(i) Waiver, we now offer services that promote independence, dignity, and belonging, including:

- Residential Supports
- Community Living and Support
- Respite Care
- Supported Employment and Job Coaching

Our human-first philosophy sees each individual as capable and deserving of opportunity. Every service is tailored for person-centered planning, aligning support to each individual's strengths, goals, and preferences.

Guided by Universal Design, permaculture principles, and a focus on quality-of-life, we design programs, spaces, and relationships that emphasize sustainability, accessibility, and shared responsibility.

Whether on the farm or in the community, our goal is the same: to help people live meaningful, connected lives.

We are proud to partner with Trillium Health Resources and Vaya Health, with plans to expand to Partners Health Management and Alliance Health. To ensure the highest quality of care, Peacehaven is also finalizing national accreditation through the Council on Quality and Leadership (CQL) – the gold standard for person-centered excellence.

These efforts align with our vision for the future Community Center, a hub for inclusive programs, workforce development, and partnerships. By integrating services on and off the farm, we're ensuring Peacehaven remains a resource for people of all abilities – and a model of inclusive community. This is more than service expansion. It's an extension of Peacehaven's mission: to create spaces where everyone belongs and where people of all abilities can live, learn, work, and grow together.

For information about Peacehaven's services, contact:

Brandon Singerman, M.Ed., Q.P.
VP of Programmatic Operations
(743) 218-6262

brandon.singerman@peacehavenfarm.org

THE MERCANTILE

When you buy something from the Peacehaven Mercantile – a t-shirt, handmade Fiber Arts, a poster, even a sticker – you're not just checking out a cart. You're saying, "I believe in this." In a place where people of all abilities live and learn side-by-side. In a community that makes time for one another.

Every purchase helps keep the lights on, the soil turned, and the laughter echoing across the fields. It may feel small – but around here, small things have a way of mattering most.



VOLUNTEER SPOTLIGHT

JESSECA THOMPSON - A HEART FOR THE MISSION

Some people give in one way. Jesseca Thompson gives in four: time, talent, treasure, and touch. A Store Leader with Carhartt, Jesseca first discovered Peacehaven through a conversation with staff member Elizabeth Strickland about a potential partnership. What began as a meeting quickly became a calling. “There is a strong sense of community, hope, and true joy in the air at Peacehaven that continues to draw me back and refills my cup when I need it most,” she says.

You’ll often find Jesseca with her sleeves rolled up at Garden Workdays and workshops. For her, the magic happens in a quiet, recurring moment: when volunteers and residents who start the morning as strangers suddenly find themselves laughing together like old friends. “My favorite thing about this moment is that it’s usually the residents who bring everyone together and get the party started,” she reflects.



Carhartt has donated work gear to Peacehaven, and Jesseca is equally generous with her leadership. She draws connections between her professional role and her Peacehaven experience: “It reinforces that every single person adds value and should be heard. In both Carhartt and Peacehaven, each person has great ideas and viewpoints that I may have never considered.”

Peacehaven has also deepened Jesseca’s understanding of belonging and inclusion. Before she arrived, she says she believed in seeing and respecting the I/DD community – but being part of Peacehaven opened her eyes to “so much potential and growth to be had in this space,” and to the wider question of which other groups need a stronger sense of belonging.

LET THE MUSIC BEGIN

A Wish From Pat (aka: Jeff’s Dad)

You can feel it in the air on the farm, that quiet hum before something wonderful starts to take shape. The fields are the same, the wind still moves through the trees the same way, but soon there’ll a new sound joining in: the rumble of trucks, the scrape of gravel, the first notes of construction.

For families like ours, that sound is music. It means the dream is becoming real.

My son, Jeff, has been counting down the days – imagining himself recording podcasts, curating music for the café, greeting friends as they walk through the new Community Center doors. And I can already see the joy on his face when he gets to do just that.



Jeff, Donna, and Patt (l. to r.)

“The future we’ve all hoped for is coming alive.”

As a parent, I can’t wait to volunteer alongside him – to see neighbors and visitors alike learning from each other, sharing their gifts, and building community in ways that only happen at Peacehaven.

The future we’ve all hoped for is coming alive. The ground is breaking, the hustle is bustling – and construction now becomes music to our ears. Let the music begin!!! - Pat Piegari

IT TAKES A VILLAGE

A Conversation with our past Board Chair

When Jenny McCosley talks about her childhood, she doesn't start with accomplishments or milestones.

She starts with her siblings. A big family, stitched together by adoption and shaped by the reality of special needs, taught her the first rule she still carries today: play well with others. Empathy and patience weren't abstract virtues in her house – they were survival skills. And over time, they became the habits of her heart.

She'll tell you, though, that even the strongest families need a village. During her teen years, neighbors and friends showed up with casseroles, with babysitting offers, with bags of hand-me-down clothes. Looking back, she realizes what a lifeline that was. "If it hadn't been for our village, I think my family would have felt very alone," she says. That memory shapes how she sees Peacehaven's purpose. We are, in many ways, a stopgap against loneliness – an antidote to the quiet isolation that too often shadows families living with disability.

Jenny's professional path grew right out of that personal story. Watching her parents navigate the confusing maze of retirement planning, estate decisions, and disability resources, she saw how scattered the help could be. So she became the kind of guide she wished they'd had – earning the Chartered Special Needs Consultant designation so she could help families plan not just for their own futures, but for the unique needs of their children and grandchildren.



Jenny McCosley at the Farm

Her years as Peacehaven's Board Chair gave her another gift: time with Core Members. Jenny lights up when she remembers their laughter, their passions, their innocence. She especially recalls how Ben's whole face would shine when he saw her boots. "I'll just about always wear them when I go to the farm," she laughs. Little moments like that remind her why this place matters – it's not an organization; it's a community stitched together by joy.

Now, as Peacehaven looks toward the future, Jenny's voice quickens with hope. The Community Center, she says, will be a beacon for families and individuals searching for connection. "Peacehaven has already touched so many lives," she reflects, "but the Community Center – and Phase Two's additional housing – will let us widen the circle. The impact will be exponential."

For our friend, Jenny McCosley, the lesson is the same now as it was around her childhood dinner table: we are better when we belong to each other. That is the music of Peacehaven – played softly in the background of every story, every handshake, every face lighting up at the sight of a pair of boots. It takes a village. And sometimes, it takes a farm.

This past summer, I had the pleasure of being a Peacehaven intern. Every day brought with it a new adventure, a new connection, and a new way to have fun and laugh with the folks at the farm. We did everything from learning about the life cycle of a butterfly, to launching water balloons and pieing each other in the face. I wouldn't have rather spent my summer at any other place or with any other people.

- Jordan Britt



SAUSAGE, PUMPKIN, & ARBORIO RICE SOUP

Your New Favorite Comfort Food

INGREDIENTS

- 2 tablespoons extra virgin olive oil, plus more for drizzling
- 1 pound bulk Italian sweet sausage with fennel
- 3 to 4 cloves garlic, chopped
- 1 onion, chopped
- 1 large bay leaf
- 1 butternut squash or small pumpkin (2 pounds), peeled and cut into 3/4-inch dice
- Kosher salt and freshly ground pepper
- Freshly grated nutmeg
- 6 cups chicken stock
- 2 cups half-and-half
- 1 small bunch kale, stemmed and chopped
- 3/4 cup Arborio rice
- A few fresh sage leaves, torn
- Shaved Parmigiano-Reggiano, for serving



INSTRUCTIONS

1. Heat the olive oil in a soup pot or large Dutch oven over medium-high heat. Add the sausage and cook, crumbling it with a wooden spoon, until browned.
2. Add the garlic and onions and cook until soft, about 5 minutes.
3. Add the bay leaf and squash and season with salt, pepper, and a little nutmeg. Stir in the stock and half-and-half and bring to a boil.
4. Reduce the heat to medium and add the kale. Simmer until the squash is tender, about 20 minutes.
5. Add the rice and simmer until just tender, 18 to 20 minutes, stirring every 2 to 3 minutes. Stir in the sage.
6. Ladle the soup into shallow bowls. Top with Parmigiano-Reggiano and a drizzle of olive oil.

NOTES

- For a delicious **vegetarian** twist, simply replace the Italian sausage with beans (like cannellini or chickpeas) and swapping the chicken stock for vegetable stock.
- The soup, without the rice, can be covered and refrigerated for a **make-ahead meal**. Simply prepare and add the rice before serving.

HERE WE GROW: New faces on the farm

We're thrilled to welcome some incredible new folks to the Peacehaven team. Each one brings fresh energy, talent, and heart to our community – and we can't wait for you to get to know them.



Alex Cantianos - *Direct Support Professional*

Alex helps participants discover their strengths, celebrate milestones, and build connections that reach well beyond the farm.



Charlie DePoortere - *Direct Support Professional*

Charlie works hand-in-hand with our residents to help them achieve their goals and thrive in the broader community.



Sandi Lovitt - *Direct Support Professional*

Sandi supports our program participants by helping them build skills, independence, and relationships that extend far beyond Peacehaven.



Brandon Singerman - *VP of Programmatic Operations*

Brandon leads and strengthens Peacehaven's programs on (and off) the farm, ensuring they reflect our values of inclusion, dignity, and belonging for people of all abilities.



Ashley Ventura - *Direct Support Professional*

Ashley walks alongside our residents, offering encouragement and support as they grow in confidence, independence, and belonging.