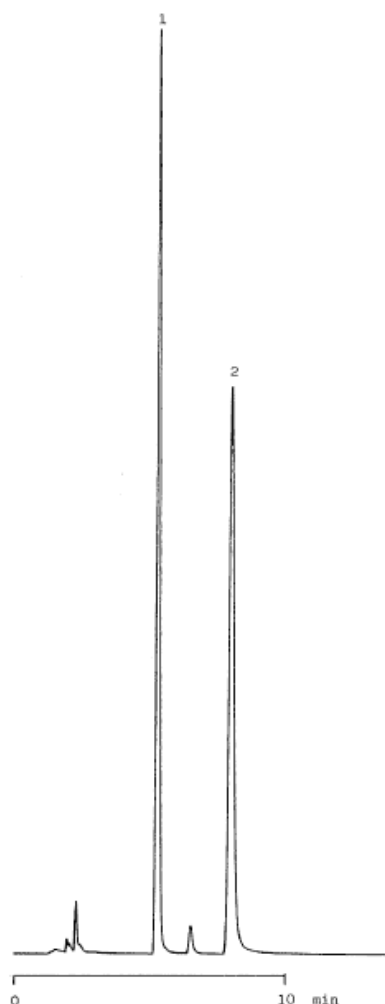


1,5-Dihydroxyanthraquinone

Data No. LA416-0000



Column : Inertsil C4
5 μ m
150 \times 4.6 mm I.D.

Column Cat. No. : 5020-01401

Eluent : CH₃CN/20 mM Na₂HPO₄ (pH 7.6; NaH₂PO₄) = 40/60

Flow rate : 1.0 mL/min.

Col. Temp. :

Detection : UV 240 nm

Injection Vol. :

Sample : 1,5-Dihydroxyanthraquinone

Solutes : 1. Toluene (30 μ L/mL)
2. 1,5-Dihydroxyanthraquinone (470 μ g/mL)