



# SHOWCASE™







The ideal phenotype can be defined in various ways and interpreted differently depending on individual preferences. Yet, one thing remains clear: we are all drawn to admire extremely stylish and attractive cattle.

Select Sires has a longstanding history of selecting sires that excel on the tanbark, but never have we matched the depth across breeds in the way that we do today. These sires are not only distinguished by their impressive presence and eye appeal, making them highly sought after, but it's their proven maternal lines that truly set them apart. We prioritize established cow families that consistently achieve success in the showing.

Our Angus lineup is anchored by the PVF Missie 0084 cow through 7AN618 MARVEL and 7AN835 CAPONE. MARVEL's continued success is unmatched, and CAPONE is positioned to follow in his brother's footsteps. We would be remiss to not share about the success customers have had in the Phenotype and Genotype Show (PGS) portion of the National Junior Angus Show. Four of the last six champions were progeny of Select Sires' genetic offering. The concept of the PGS is exactly the same philosophy we use every day when selecting sires for production use. We seek out sires that offer high genetic merit without sacrificing functional traits. Not only have we had success in the past, but we feel we have several rising stars that could sire PGS champions of the future.

For years 7SM65 UNO MAS was a mainstay in our lineup. To date, he has sold more sexed semen units than any other beef sire offered by Select Sires. While we love to reflect on the past, it's the future of the Showcase Simmental lineup that has us excited. Both 7SM149 POINT PROVEN and 7SM151 MANTACHIE are destined for success as phenotypic leaders that are anchored by some of the most popular and successful cows of the breed.

Finally, we can't forget the most talked about bull in the Charolais breed, 7CH114 HISTORIC. He is an exceptional crossover sire that improves genetic merit and offers eye-catching style.

We believe these sires are poised to leave a positive lasting impression on the livestock industry and showing. Don't just dream about it, create your own legacy with Select Sires' Showcase lineup!

*Ryan Bodenhausen*

Ryan Bodenhausen, Associate Vice President, Beef Acquisition and Marketing

"Your Success Our Passion. and the Select Sires logo are registered trademarks of Select Sires Inc., Plain City, OH. "Showcase is a trademark of Select Sires Inc. Front Cover Image: 7AN743 CRAFTSMAN daughter, Wilks Rita 4218, grand champion PGS female, PGS National Junior Angus Show (NJAS), 2025, Kaylan Kiser, Proctor, TX. Back cover (L-R): 7AN604 TOP CUT daughter, JDD Beauty M42, reserve grand champion bred and owned PGS heifer, PGS NJAS, 2025, Denton Darrel Cook, Foss, OK; 7AN757 SALUDA daughter, Long Lucy 408, grand champion bred and owned PGS female, reserve grand champion PGS female and reserve champion division three, NJAS, 2025, Gage Long, Vinita, OK, Next Level Images.



Scan to place your order today!





7AN835 PVF CAPONE 2104

# CAPONE

King Pin x McKinley // 20567999

Without a doubt, CAPONE is the most exciting Showcase sire of the year! His progeny are topping sales and capturing the attention of the industry's most elite breeders. CAPONE is a massively constructed individual that is big footed, loose structured and wide from end to end with tremendous rib shape and look. His pedigree combines two of the most influential and potent cow families at Prairie View Farms, Missy and Lucy. This must-use sire is also an outstanding choice for calving ease.

Top (L-R): CB WB Princess 502, Cealy Bedwell, Holt, MO; CB Princess 508, Cealy Bedwell, Holt, MO; PVF Proven Queen 5407, Krawford Kennedy, Breckenridge, TX; TR Sandy N4480, Seth L. Cox, Eagle Point, OR; Bottom: CAPONE, Focus Marketing Group photo.



Marvel





7AN618 PVF MARVEL 9185

# MARVEL

Blacklist x McKinley // 19566408

## *Exceptional Style & Elegance*

MARVEL is rewriting history books as a sire with unmatched success. He stamps out consistent results with progeny that are striking and elegant yet have extra power and punch. His offspring have competed and taken home champion honors at the highest levels of state and national shows. The pinnacle of this was siring the grand champion female of the 2024 National Western Stock Show junior show. He has been a long-time sire satisfaction bull and continues to create high value calves but is now transitioning to the next stage of his career as the sire of many impactful brood cows.

Left Page (Top - Bottom): MARVEL, Focus Marketing Group photo; PVF Lucy 4055, Alli Perry, Fayetteville, TN, Focus Marketing Group photo; PVF Proven Queen 3025, fourth place overall owned champion female, National Junior Angus Show, 2024, Ashton Dillow and Prairie View Farm, Villa Ridge, IL; Right Page, bottom photo: PVF Proven Queen 3025, grand champion owned female, Atlantic National Regional Preview Junior Angus Show, 2024, Ashton Dillow and Prairie View Farm, Villa Ridge, IL; Right (Top - Bottom): Fair Oaks Susan 506, Samuel Linlee Jordan, Savannah, MO; Dameron Nellie 4101, reserve intermediate division two, National Junior Angus Show, 2025, Cambria Cook, Clovis, CA; PVF Proven Queen 3025, Ashton Dillow, Villa Ridge, IL.








7AN768 STELLPFLUG HOFFMAN RISEABOVE

# RISEABOVE

STAGECOACH x Jet Black // 20516965

A rising star in the Angus lineup, RISEABOVE offers breed-leading performance, docility and eye appeal. His maternal pedigree is stacked with greatness back to the famous HA Rito Lady 3839 who has been an anchor for the Hoffman program. His offspring offer extra look, correctness, length and extension – all traits that are important for adding phenotype to any calf crop.



7AN757 YON SALUDA   
**SALUDA**


Stellar x Discovery // 20336998

SALUDA has been a customer satisfaction sire for years, and we are excited to welcome him to the Showcase lineup based on his progeny's performance. It's no surprise that his daughter, Long Lucy 408, was named reserve grand champion of the PGS this last summer in Tulsa, OK. SALUDA is a true genomic gem that offers excellent foot quality, added muscle and an elegant look with exceptional balance of maternal and terminal traits.

Top (L-R): RISE ABOVE, Kate Roberts photo; Hoffman Rise Above 4400, Hoffman Ranch and Cole Elrod, Talmo, GA. Bottom (L-R): Long Lucy 408, grand champion bred and owned and reserve grand champion PGS female, National Junior Angus Show, 2025, Gage Long, Vinita, OK; SALUDA.

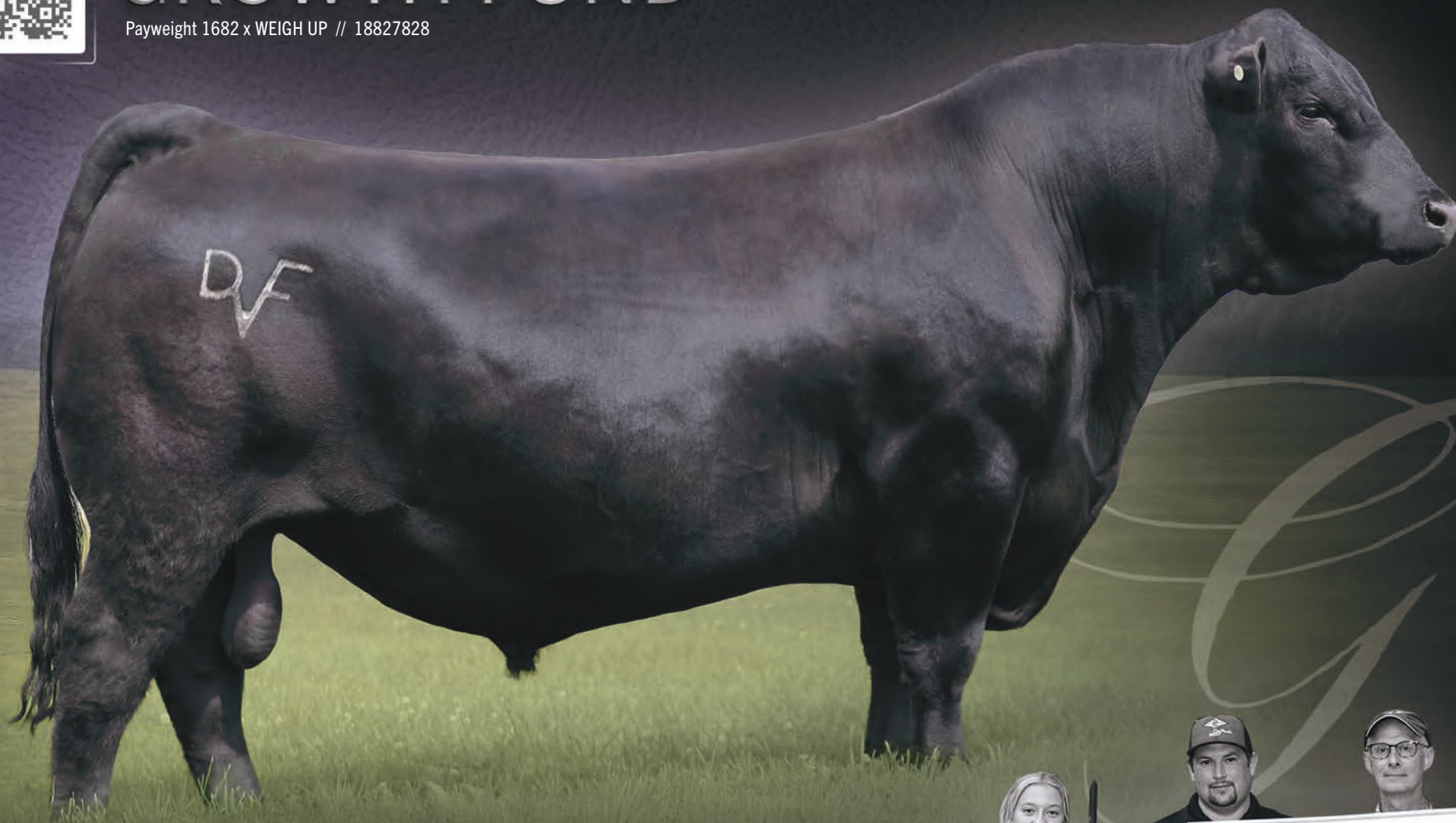




7AN528 DEER VALLEY GROWTH FUND 

# GROWTH FUND

Payweight 1682 x WEIGH UP // 18827828



The man, the myth, the legend – GROWTH FUND! Former Angus registration leader and two-time sire of the champion National Junior Angus Show PGS heifer, GROWTH FUND is a staple in the breed for phenotypic excellence. He is the go-to sire for adding muscle, hip, depth of body and overall eye appeal in one generation. Known for his elite performance and growth, GROWTH FUND will make major improvements in many categories. Tried and true, there is no safer bet than GROWTH FUND!

GROWTH FUND, Higgins photo; Bottom image: DPL Sandy 1595, division one champion, National Junior Angus Show PGA, 2022, Anne Dameron, Towanda, IL.







7AN743 CONNEALY CRAFTSMAN

# CRAFTSMAN

Resilient x Niobrara // 20132505

As the Angus breed's back-to-back registration leader, CRAFTSMAN is no stranger to the big stage. His list of accomplishments grew this year when his daughter, Wilks Rita 4218, was crowned grand champion of the National Junior Angus Show's PGS. CRAFTSMAN delivers added muscle with a stunning look to his offspring, complemented by a cool number set that makes him very competitive when balancing phenotype and data.

Top (L-R): CRAFTSMAN; Wilks Rita 4218, grand champion, PGS NJAS, 2025, Kaylan Kiser, Proctor, TX; Vintage Rita 4171, Lazy H Ranch Kansas, Hays, KS. Middle Image: CRAFTSMAN daughter and sister to BEDROCK, Boyd Beef Cattle, Mays Lick, KY, Kayla photo; Bottom image: BEDROCK.



7AN813 BOYD BEDROCK

# BEDROCK

Prolific x Accomplishment // 20640373

A trailblazer in the Select Sires lineup, BEDROCK was one of the most sought after sires in 2024. His balance of elite phenotype and genotype are perfect for creating the next PGS champion. Backed by a rising maternal star of the breed, Shauna 220H, BEDROCK has it all: pedigree, phenotype and performance.





7SM149 WHF POINT PROVEN H45

POINT PROVEN

OI 'Son x MAIN EVENT // 3780742

POINT PROVEN offers the trifecta of elite phenotype, proven pedigree and exceptional genotype. Backed by the famous and dominate donor from Wayward Hill Farms, WHF Delilah 45D, POINT PROVEN is destined for maternal greatness. To add to his elite maternal pedigree, his paternal grandam, WHF Summer 365C, was one of the most dominant show heifers of her time and is now an elite donor for the Steenhoek family. He is a breed leader for Calving Ease, but it is his added length, structural integrity and long extended neck that takes POINT PROVEN to the next level!



Top (L-R): STCC Empress 104M, Glennys McGurk, Kingsman, IN; Wayward Hill Farm, Versailles, KY, LH photo; STCC Miley 248M, Abby Wolbaugh, Orrville, OH; Bottom (L-R): POINT PROVEN; Mid-Am Profess Your Luv 11M, third overall heifer, champion bred and owned, and supreme bred and owned heifer, Kansas State Fair, 2025, Brinley Bodenhausen, Muscotah, KS.





7SM151 STCC MANTACHIE 105L

# MANTACHIE

Tecumseh x Profit // 4288876



As the old saying goes, there is power in the blood. MANTACHIE combines two of the most prolific maternal lines to ever set foot on the tanbark. His dam is a full sister to Wicked Angle 129J, triple crown winner Mari 785E, and the 2024 champion bred and owned female of the American Junior Angus Association's National Classic, Savage Angel 311L. His sire hails from a cow family that needs no introduction, Serena, who continually dominates in the showing. MANTACHIE is a cool-made, big-footed, athletic, blaze-faced sire that is destined to create show-winning progeny!

Top - Bottom: MANTACHIE, photo reversed; Mari 785E, full sister to MANTACHIE's dam, grand champion of the American Royal, 2018, North American International Livestock Exposition (NAILE), 2018 and National Western Stock Show, 2019; Wicked Angel 129J, full sister to dam of MANTACHIE reserve champion division four, NAILE, 2022.



7CH114 SVY HISTORIC 241K

# HISTORIC

Countdown x New Standard // EM965421



With the recent addition of the PGS at the Charolais Junior National, there is no better sire prospect to kickstart your winnings than HISTORIC! This impressive sire offers incredible data, but his overall appearance is what makes him a standout. He is stout from the ground up and incredibly dense bodied yet is very flexible and athletic on the move. Make history in your herd by adding HISTORIC to your matings!

Top - Bottom: HISTORIC (reversed); SVY MS Germaine 236K, full sister to HISTORIC (reversed); HISTORIC daughter, ONL Miss Hot Dam 60N, reserve champion intermediate heifer calf, Kyle O'Neill, Red Deer County, AB, Olds Fall Classic Charolais Show.



# WHERE WINNING BEGINS



**YOUR SUCCESS** *Our Passion.*

(614) 873-4683 ♦ [www.selectsiresbeef.com](http://www.selectsiresbeef.com)

Select Sires' dedication to creating a genetic lineup that excels not only in genomic merit but also for ideal type is evident through the success of customers at the National Junior Angus Phenotype and Genotype Show (PGS). Since the show's inception in 2020, Select-sired progeny have been crowned grand champion four of the six years. In 2025, it was a clean sweep of the podium with 7AN743 CRAFTSMAN siring the grand champion female, 7AN757 SALUDA siring the reserve grand champion who later went on to claim champion bred and owned, and 7AN604 TOP CUT siring the reserve grand champion bred and owned female. Winning begins with Select Sires' Showcase lineup!