



**SHOREFLEX<sup>®</sup>**  
**VEGETATED CONCRETE BLOCK MAT**



# **SHOREFLEX<sup>®</sup>**

**ELIMINATES EROSION.**

**EASY INSTALL.**

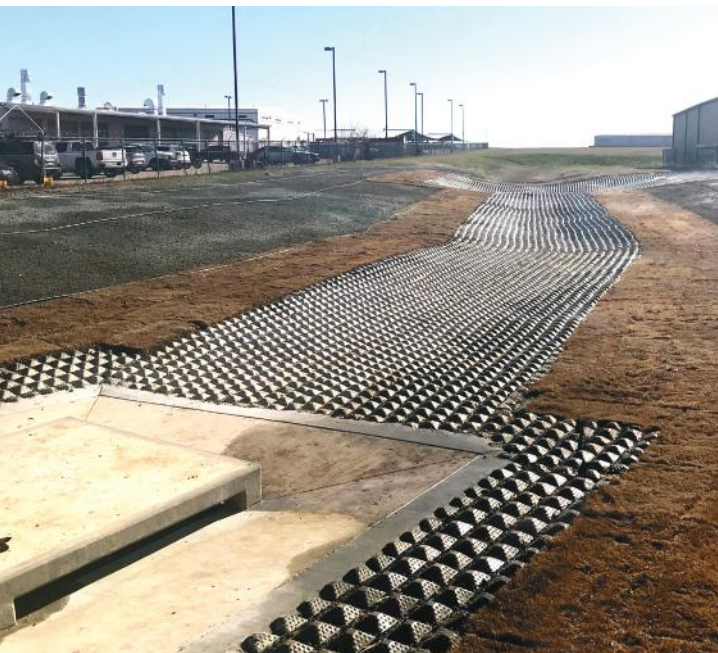
**GROWS GREEN.**

**UNIFORM AND CONSISTENT  
PERFORMANCE.**

## **APPLICATIONS**

- **Bridge Abutment**
- **Canoe-Kayak Launch**
- **Channel Lining**
- **Curb Inlet**
- **Detention Basin**
- **Existing Outlet**
- **Letdown Channel**
- **Low Volume Channel**
- **New Outlet**
- **Overflow**
- **Pipeline Protection**
- **Roadside Channel**
- **Shoreline**
- **Slope Protection**
- **Wind & Solar Farm**

# Applications



# ShoreFlex® Product Properties



ShoreFlex® is offered in a wide variety of sizes to fit your specific needs. Custom sizes are available at additional cost. Max weight shown is max roll weight for shipping estimation.

WIDTH		LENGTH		8'	16'	25'	32'	50'
4'		ROLL WEIGHT (lbs)		352	704	1,100	1,408	2,200
		MATS/TRUCKLOAD		127	63	40	31	20
8'		ROLL WEIGHT (lbs)		704	1,408	2,200	2,816	4,400
		MATS/TRUCKLOAD		63	31	20	15	10
10'		ROLL WEIGHT (lbs)		880	1,760	2,750	3,520	5,500
		MATS/TRUCKLOAD		51	25	16	12	8
16'		ROLL WEIGHT (lbs)		1,408	2,816	4,400	5,632	8,800
		MATS/TRUCKLOAD		31	15	10	7	5

CUSTOM SIZES AVAILABLE UP TO 16' WIDE  
ROLL WEIGHT IS MAX SHIPPING WEIGHT

## SHOREFLEX® TECHNICAL INFORMATION

**Blocks** 5,000 PSI, Wet-Cast Portland Cement / ASTM C39/C39M

**Block Size** 6.5"x 6.5"x 2.5" / Avg. Weight: 4.5 lbs

**Percentage Open Area (POA)** 30% min.

**Material Weight** Min. 10 lbs. / sf

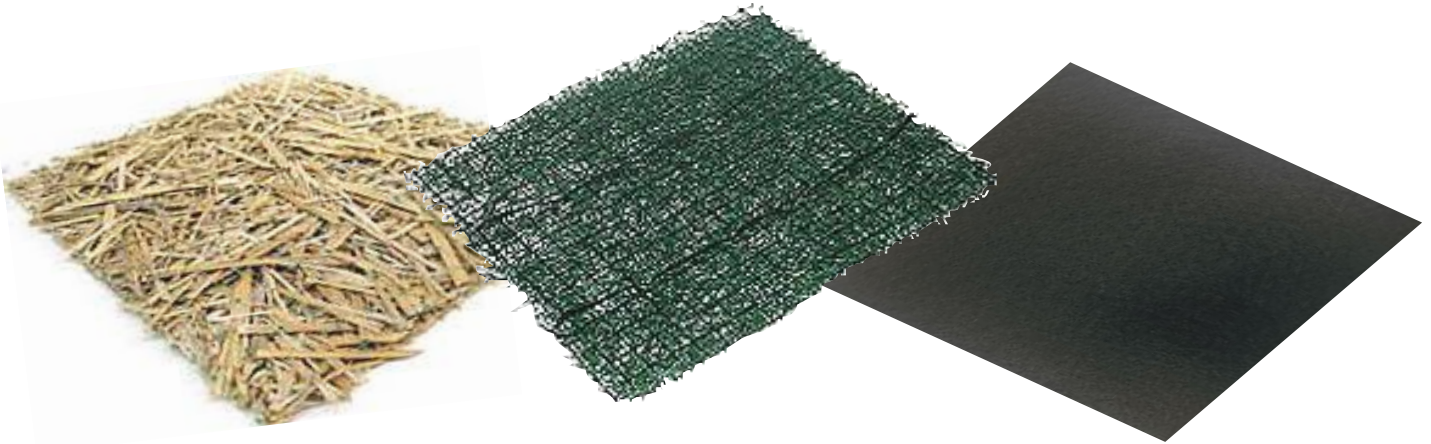
**SF Per Load** 4,000 to 4,300 lbs/TL (pending trucking ability and roll sizes)

**Interlocking** Polypropylene 30/30 w/ 2,000 lb/ft biaxial strength  
Grid Aperture 1.6"

**Backing Options** Double Net Straw (DNS2), GS 50, Non-Woven Fabrics

**Anchor Types** 18" Rebar "U" & Earth Anchors  
Stainless, Galvanized or Steel

## ShoreFlex® Backing Options



**Double Net Straw  
DNS 2**

**Turf Reinforcement Mat  
GS50**

**Non-Woven  
Geotextiles**

Shoreflex® can provide your project with various erosion control backings for your concrete mats. Customized backings allow for site specific seed and soil retention, providing different levels of longevity.

## ShoreFlex® Roll Delivery Options

- **Onsite Installation Support**
- **Multiple Anchoring Systems Available**





**Test Channel Setup**



**Test Channel Outfall**



**High Flow in Channel**



**Post Test**

**Testing:** Current federal design procedures utilize bed shear stress for primary stability analysis. This approach takes into consideration: velocity, depth of flow, and energy slope gradient to determine how much hydraulic energy (bed shear) is incident on the ShoreFlex® mats. ShoreFlex® has been flume tested to withstand shear stresses of 18lb/ft<sup>2</sup> and velocities of 30 ft/s.

## Performance

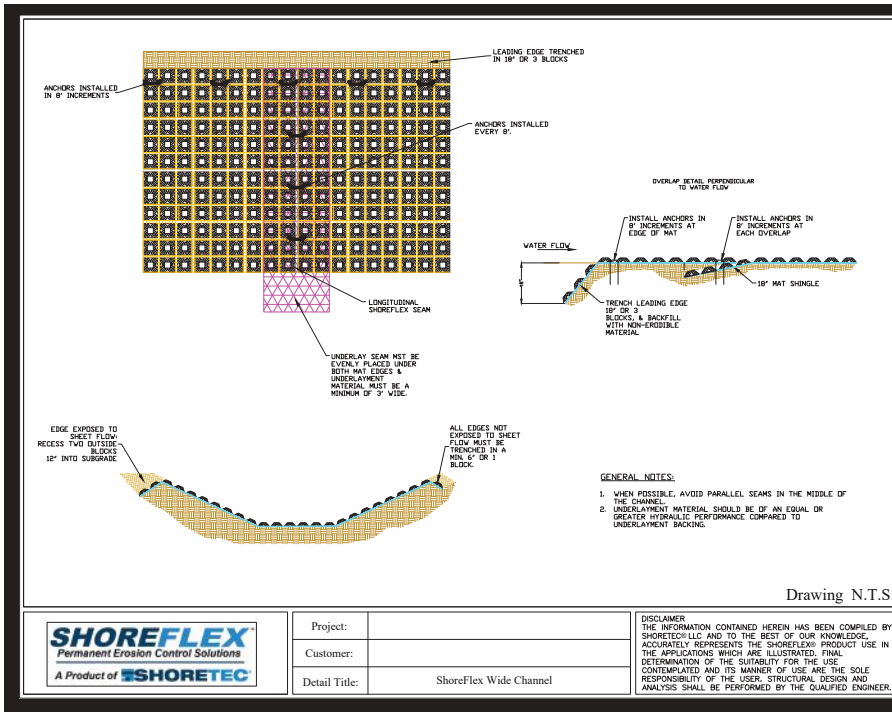
Test	Tested Value	Bed Slope	Soil Classification	Limited Value
<b>ASTM 6460-12</b>	Shear Stress	10% & 20%	Clayey Sand (USCS) Loam (USDA)	18+ psf
<b>ASTM 6460-12</b>	Velocity	10% & 20%	Clayey Sand (USCS) Loam (USDA)	30+ ft/sec

## HEC-RAS

HEC-RAS has been developed for the U.S. Army Corps of Engineers (USACE). HEC-RAS is a hydraulic modeling system used to properly analyze flow conditions in multiple situations.

<http://www.hec.usace.army.mil/software/hec-ras/downloads.aspx>

## SHOREFLEX® DETAILS



### Installation Details

Typical installation details available at [www.shoreflex.com](http://www.shoreflex.com)

Custom installation details available upon request.



Download our “**PRODUCT SPECIFICATIONS**” on line at [SHOREFLEX.COM](http://SHOREFLEX.COM)

• <b>ShoreFlex® Standard:</b>	Regular Black Polypropylene Grid GS50 Backing
• <b>ShoreFlex® Ultra UV:</b>	Tan Polypropylene UV Resistant GeoGrid with GS50 Backing
• <b>ShoreFlex® Pro:</b>	Black Polypropylene GeoGrid with GS50 & DNS-50
• <b>ShoreFlex® Ultra UV Pro:</b>	Tan Polypropylene UV Resistant GeoGrid with GS50 & DNS-50 Backings

Multiple anchoring systems available.



**www.shoreflex.com**  
**800 575 7293**



**SHOREFLEX<sup>®</sup>**

**PREMIER**  
CONCRETE PRODUCTS

Customer should verify with the product manufacturer that customer has the most current **ShoreFlex<sup>®</sup>/Premier Concrete<sup>®</sup>** specifications for the product ordered or purchased. The **ShoreFlex<sup>®</sup>/Premier Concrete<sup>®</sup>** system can be used in the application described in our literature and on our website, provided proper installation and engineering principles are followed. Professional engineering should be consulted before installation of **ShoreFlex<sup>®</sup>/Premier Concrete<sup>®</sup>** units to assure appropriate design and use. ALL EXPRESSED OR IMPLIED WARRANTIES, INCLUDING THOSE OF MERCHANTABILITY AND FITNESS FOR A PARTICULAR PURPOSE ARE DISCLAIMED. **ShoreFlex<sup>®</sup>** is a trademark of Premier Concrete Products, Inc.