

43rd Annual

Concrete Paving Workshop



January 24 - 25, 2023
Cornhusker Marriott Hotel | Lincoln, Nebraska

AGENDA

AGENDA

Tuesday, January 24, 2023		Moderator: Bruce Grupe (NCPA)	Grand Ballroom
7:00 am to 5:00 pm	REGISTRATION OPEN ALL DAY		
9:00 am to 9:10 am	Welcome	Bruce Grupe, P.E. (NCPA Executive Director)	
9:10 am to 9:30 am	3-Minute Presentations	Exhibitors	
9:30 am to 10:00 am	State of the State	NDOT Deputy Director	
10:00 am to 10:30 am	BREAK		
10:30 am to 11:00 am	Update on FHWA Activities/Programs	James (Rusty) Simerl (Nebraska Division Administrator, FHWA)	
11:00 am to 11:30 am	NDOT Airport Activities/Updates	Ann Rickart (Airport Division Manager, NDOT)	
11:30 am to 12:00 pm	NE Board of Engineers Rules Changes	John Wilbeck (NE Board of Engineers and Arch.)	
12:00 pm to 1:30 pm	PAVING AWARDS CEREMONY & LUNCH		
1:30 pm to 2:00 pm	BREAK		
2:00 pm to 3:30 pm	BREAKOUT SESSIONS		
3:30 pm to 4:00 pm	BREAK		
4:00 pm to 5:00 pm	BREAKOUT SESSIONS		
5:00 pm	RECEPTION		
Wednesday, January 25, 2023		Moderator: Mike Willman (GCP Applied Technologies)	Grand Ballroom
6:30 am to 8:00 am	BREAKFAST	Grand Ballroom ABC	
8:00 am to 9:00 am	Expressway Project Updates	Project Managers (NDOT)	
9:00 am to 9:45 am	Carbon Neutrality: Cement & Concrete: Achieving Sustainability with Concrete Pavements	Eric Ferrebee (ACPA)	
9:45 am to 10:15 am	BREAK (NCPA Annual Members Meeting - Boca Raton Room)		
10:15 am to 10:45 am	Pre-Cast Panel Pavement Design & Construction	Bruce Barrett (NDOT) Barb Gerbino-Bevins (NDOT)	
10:45 am to 11:15 am	Buy America	Brandon Varilek (NDOT)	
11:15 am to 11:45 am	Consolidating Concrete (Vibration Management)	Paul Jaworski (Minnich Manufacturing)	
11:45 am	Door Prizes		

Total Workshop Credits of 8.25 PDH Available!

Be sure to retain the PDF forms inside this booklet for your records.

BREAKOUTS

Offered First Day at the Times Listed Below:

	SESSION 1 Grand Ballroom DEF Moderator: Mike Willman (GCP Applied Technologies)	SESSION 2 Grand Ballroom ABC Moderator: Mark Deetz (Lyman Richey)	SESSION 3 Arbor I/II Moderator: Joel Sedlacek (Central Plains Cement Co.)
2:00 to 2:30 pm	Ethics for Engineers Todd W. Weideman (Woods/Aitken Law Firm)	Open Your Pavement Early (Maturity Method) Tim Krason(NDOT)	NDOT History of ASR Mitigation Wally Heyen (NDOT)
2:30 to 3:00 pm		Retaining Employees Luke Haha Mike Pospichil (Haha Financial)	NDOT Research Updates Lieska Halsey (NDOT)
3:00 to 3:30 pm	Nebraska PE Updates and CE Requirements Jon Wilbeck (NE Board of Engineering and Architecture)	Decorative Concrete Maintenance Stanley Zawadzki (Nox Crete)	ASR Control on Existing Pavements Andrew Jones (Evonik)
3:30 to 4:00 pm	BREAK		
4:00 to 4:30 pm	FHWA Concrete Program Update Michael Praul (FHWA)	Back to Basics: Placement & Finishing Michael Daedalus (Daedalus Construction)	AGC NDOT Paving Committee Update Brian Fox (Koss Construction)
4:30 to 5:00 pm	E-Ticketing Andy Dearmont (NDOT) Mike Schultz (Command Aikon)	Back to Basics: Saw Cutting, Curing & Joint Layout Peter Taylor (Concrete Paving Tech Center)	Omaha Metro Area Paving Committee Update Panel: Bruce Grupe, Todd Pfitzer & Dan Thiele

CONFERENCE MAP



BOARD of DIRECTORS

Eric Anderson

Kurt Peyton

Bill Ringsdorf

Jed Paulsen

Steve Wobken

PLANNING COMMITTEE

Andy Dearmont

Bill Wehling

Bryan Fox

Chad Price

Dr. Jiong Hu

Jeff Mulder

Jim Witt

Joel Sedlacek

Mat Nisotis

Mike Willman

Nhung Hoang

Randy Pierce

Tyler Jensen

Tyson Vogt

Wally Heyen

SPEAKERS' CONTACT INFORMATION

Name	Organization	Phone	Email
Bruce Grupe	NCPA	402.499.7105	bgrupe@nebrconc.org
Moe Jamshidi	Nebr. DOT	402.479.4671	moe.jamshidi@nebraska.gov
Rusty Simerl	Nebr. Div., FHWA	402.742.8462	James.Simerl@dot.gov
Ann Richart	Nebr. DOT-Aeronautics Division	402.471.7922	ann.richart@nebraska.gov
Jon Wilbeck	NE Board of Engr. And Arch.	402.471.2021	jon.wilbeck@nebraska.gov
Todd Weidemannont	Woods/Aitken Law Firm	402-898-7454	tweidemann@woodsaitken.com
Michael Praul	FHWA	202-366-1335	michael.praul@dot.gov
Andy Dearmont	Nebr. DOT	402.479.4451	andy.dearmont@nebraska.gov
Mike Schulz	Command Alkon	317-402-3713	mschulz@commandalkon.com
Tim Krason (NDOT)	Nebr. DOT	402-525-6569	Tim.Krason@nebraska.gov
Luke Hahn	Hahn Financial Group	605-275-6000	lukehahn@hahnfinancialgroup.com
Mike Pospischil	Hahn Financial Group	605-275-3600	mikepospischil@hahnfinancialgroup.com
Stephen Linn	Nox Crete	402-850-9523	slinn@nox-crete.com
Michael Daedalus	Daedalus Construction	402-556-1892	info@daedalisconstruction.com
Peter Taylor	National Conc. Paving Tech. Center	515.294.9333	ptaylor@iastate.edu
Wally Heyen	Nebr. DOT	402-479-4677	wally.Heyen@nebraska.gov
Lieska Halsey	Nebr. DOT	402-479-3861	lieska.Halsey@nebraska.gov
Andrew Jones	Evonik	612 968-8761	andrew.m.jones@evonik.com
Bryan Fox (Committee Chair)	Koss Construction	785.228.2928	bcf@kossconstruction.com
Todd Pfitzer	City of Omaha	402- 444-5226	tpfitzer@cityofomaha.org
Dan Thiele	Thiele Geotechnical	402.556.2171	dthiele@thielegeotech.com
Eric Ferrebee (ACPA)	American Concrete Paving Association	847-966-2272	eferrebee@acpa.org
Bruce Barrett	Nebr. DOT	402-479-4096	bruce.barrett@nebraska.gov
Brandon Varilek	Nebr. DOT	402-479-4697	brandon.varilek@nebraska.gov
Paul Jaworski	Minnich Manufacturing	419-903-0010	pjaworski@minnich-mfg.com

EXHIBITORS

Logan Contractors Supply

Murphy Tractor & Equipment Co.

Q's Lights & Sirens

RW Engineering & Surveying

Shaffer Communications, Inc.

Midstates Equipment and Supply

SPONSORS

Gold Eagle Sponsors

Ash Grove Cement • Central Plains Cement
GCC of America • GOMACO
Logan Contractors • NEBCO • Paulsen, Inc.

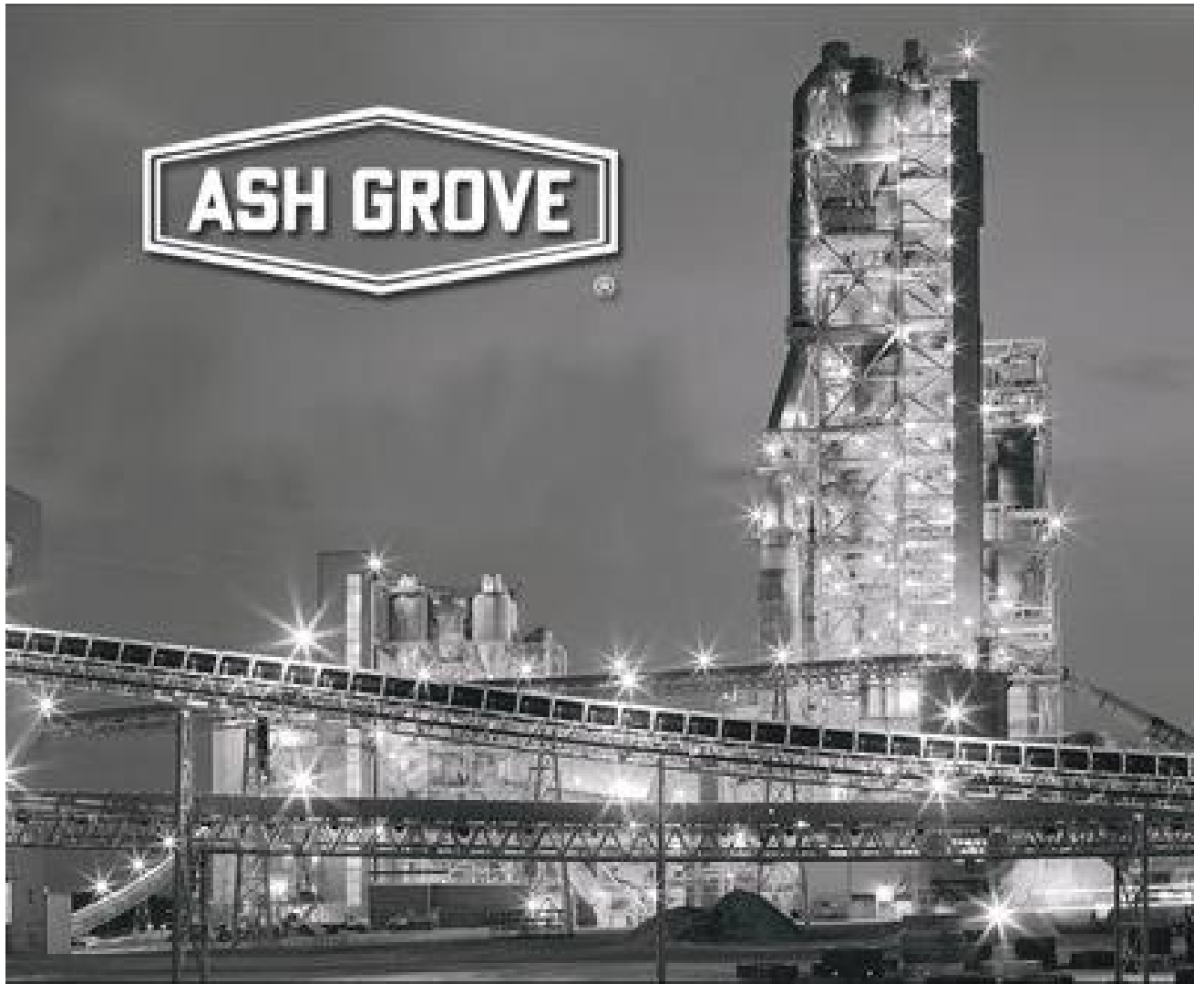
Sponsors

Astec Industries (CON-E-CO)	Lyman Richey
E & A Consulting Group, Inc.	Martin Marietta
Gehring Construction. & Ready Mix	Mid States Engineering
Grace Construction Products	Olsson Associates
JEO	RW Engineering
JINCO, LLC	TAB Construction
Kirkham Michael	The Schemmer Associates
Koss Construction	Thiele Geotech, Inc.

Special Sponsors

Nebraska Concrete & Aggregates Association
Nebraska Chapter ACI
Nebraska Department of Transportation
FHWA - Nebraska Division

Sponsor Ads



Ash Grove Cement Company
American made and American owned since 1882

Contact our Omaha sales office: 402.334.1401

www.ashgrove.com



600 S. Cherry St., Ste. 1000
Glendale CO 80246
303-739-5900 Phone
303-739-5940 Fax
www.gccusa.com



GCC Philosophy:

Mission: To be the supplier of choice in cement, concrete and innovative solutions.

2020 Vision: Our customers recognize us as a business partner that generates the most value to their construction projects. We're a sustainable growing company, a great place to work and a solid investment for our shareholders.





***PROVIDING VITAL TO
LIFE ENGINEERING
SERVICES***

Scan QR Code for
Kirkham Michael
on



Proudly Serving Nebraska Since 1946:

Transportation
Airports
Stormwater
Surveying

Construction Services
Site Development
NEPA Services



Corporate Office

12700 West Dodge Road | Omaha, Nebraska | 402-393-5630

www.kirkham.com

EaglePave[®] IS Blended Cement

EaglePave IS is a blend of Ground Granulated Blast Furnace Slag (GGBFS) and Portland cement that is suitable for use in virtually all concrete and concrete product applications.

Improved Strength EaglePave IS surpasses the strength of Portland mixes at 28 days and beyond.

Improved Workability Concrete produced with EaglePave IS improves the workability and finishability of the concrete

Reduced Permeability EaglePave IS lowers the permeability of concrete; therefore, increasing the durability of the concrete.

Reduced Alkali-Silica Reactivity (ASR) EaglePave IS improves the resistance to ASR attack by decreasing concrete's permeability and preventing the migration of alkalis to reactive aggregates. Confirmation testing should be performed on a specific project basis.

Improved Performance Through Ternary Blend EaglePave IS can be combined with other SCMs, such as fly ash or silica fume, to maximize economics while providing improved performance over straight cement mixes.

Improved Night Visibility & Increased Albedo EaglePave IS's lighter color improves night visibility. It also reflects light, resulting in cooler surrounding temperatures, helping to reduce the urban heat island effect.

Environmentally Friendly Alternative EaglePave IS contains slag cement which defined by the USGBC is a pre-consumer recycled material. The overall CO2 footprint of a mix is also reduced compared to straight Portland cement, because of the increased cement/clinker ratio.

Additional Properties of Hardened Concrete

Drying Shrinkage: The use of EaglePave IS generally has no adverse effect on drying shrinkage.

Resistance to Sulfate Attack: Concrete mixes using EaglePave IS improve the concrete's resistance to sulfate attack when compared to straight Portland mixes.

Physical Properties

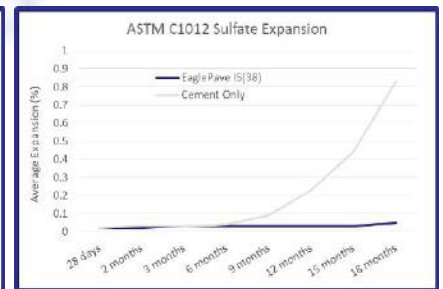
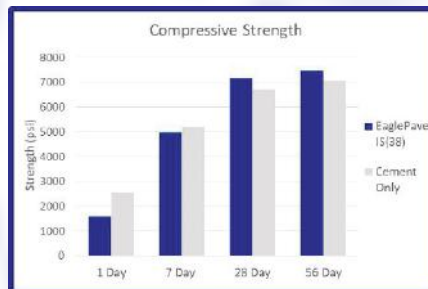
	ASTM Specs	Reported
Specific Gravity	—	3.05
Blaine Fineness	—	433
Air in Mortar (%)	12% max	9
Autoclave Expansion (%)	0.80 max	0.02
Sulfur as Sulfide (%)	2.0 max	0.31

Specifications

EaglePave IS meets all applicable ASTM C595 and AASHTO M240 specifications for Portland Blast Furnace Slag Cement IS(XX).

State Approvals

EaglePave IS can be found on the Qualified Products List for the following states: Nebraska DOT, Iowa DOT, Missouri DOT, and Kansas DOT.



Enhanced Concrete Properties

	Cement Only	IS(38)
ASTM C1567		
16 days, % expansion	—	0.03-0.04
Surface Resistivity		
28 days, kΩ-cm	8.2	24.2
ASTM 1012		
18 months, % expansion	0.83	0.05

For More Information

Joel Sedlacek, Territory Sales Manager
Phone: 402-305-3709
Email: jsedlacek@centralplainscement.com

Megan Dangel, PE., Tech Services Engineer
Phone: 918-896-0598
Email: mdangel@centralplainscement.com

Additional Properties of Fresh Concrete

Water Reduction: Concrete mixes using EaglePave IS generally require less water for a given slump

Air Entrainment: Concrete mixes using EaglePave IS contain no carbon residue that can effect air entrainment admixtures.

Set Time: Concrete mixes using EaglePave IS may have slightly extended set times, especially at higher slag cement replacement percentages

Pumping: Concrete mixes using EaglePave IS generally have improved pumpability.

Heat of Hydration: Concrete mixes using EaglePave IS generate less heat; therefore, reducing the possibility for thermal cracking.

Additional Properties of Hardened Concrete

Drying Shrinkage: The use of EaglePave IS generally has no adverse effect on drying shrinkage.

Resistance to Sulfate Attack: Concrete mixes using EaglePave IS improve the concrete's resistance to sulfate attack when compared to straight Portland mixes.



**Central Plains
Cement Company**



Paving the way

in communities since 1937.



North Road, Grand Island

jeo.com

Architecture | Engineering | Surveying | Planning



With Over 100 Years of Experience...

Koss Construction Company is a leading heavy highway contractor equipped and staffed to deliver virtually every surfacing product being designed today for streets, highways, industrial sites and airfields.



1800 NW Brickyard Road
Topeka, Kansas 66618
www.kossconstruction.com



Tel: 785-228-2928
Fax: 785-228-2927



NEBRASKA'S GOMACO DISTRIBUTORSHIP



JINCO

JINCOUSA.com

402-560-1300



Martin
Marietta

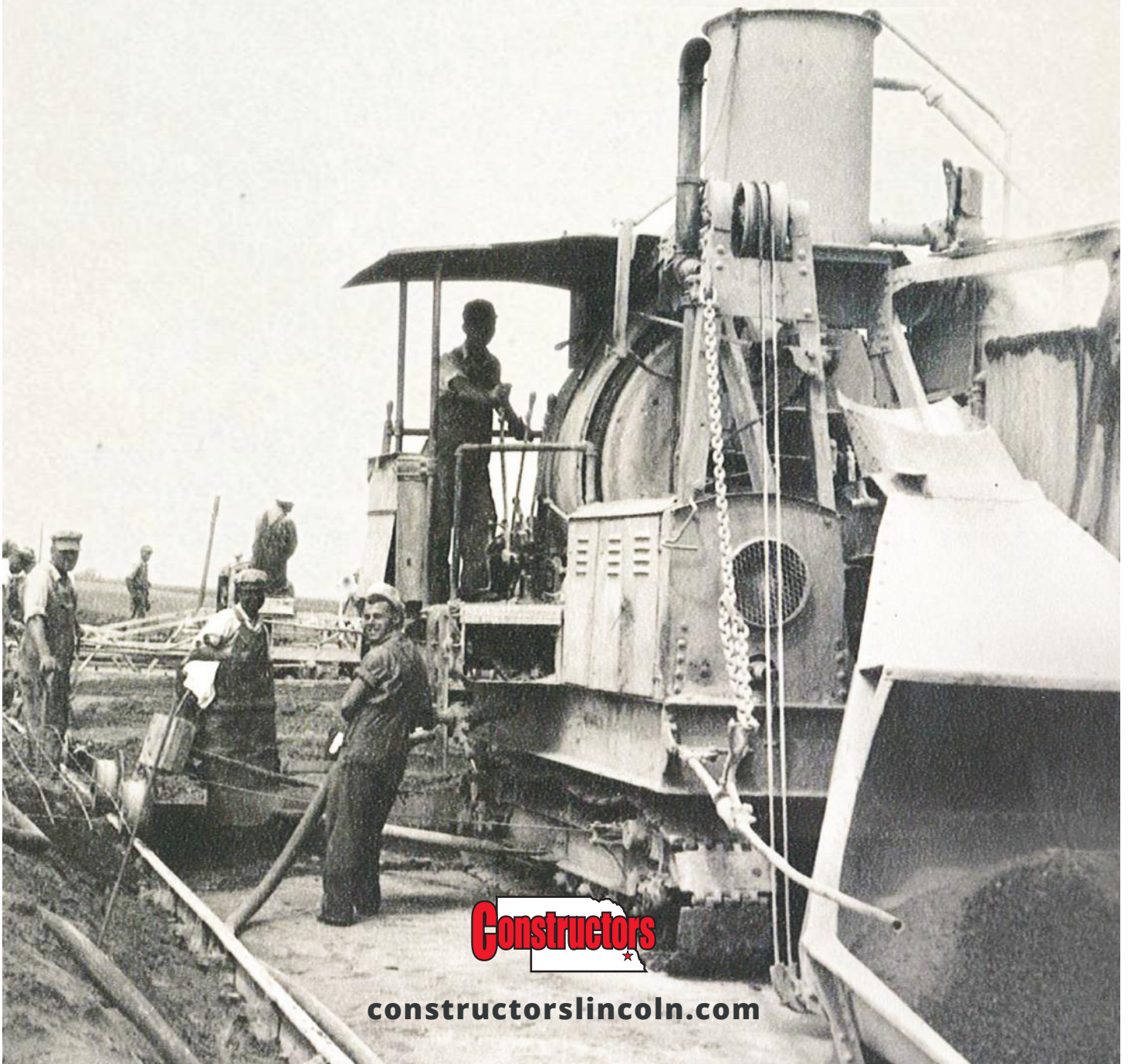
It's not just **what** we make;
it's what we make **possible.**[®]

Midwest Division
(515) 254-0030

Throughout Nebraska
and across the Midwest.
Building the world around you.

NYSE:MLM
www.martinmarietta.com

BUILDING NEBRASKA SINCE 1908

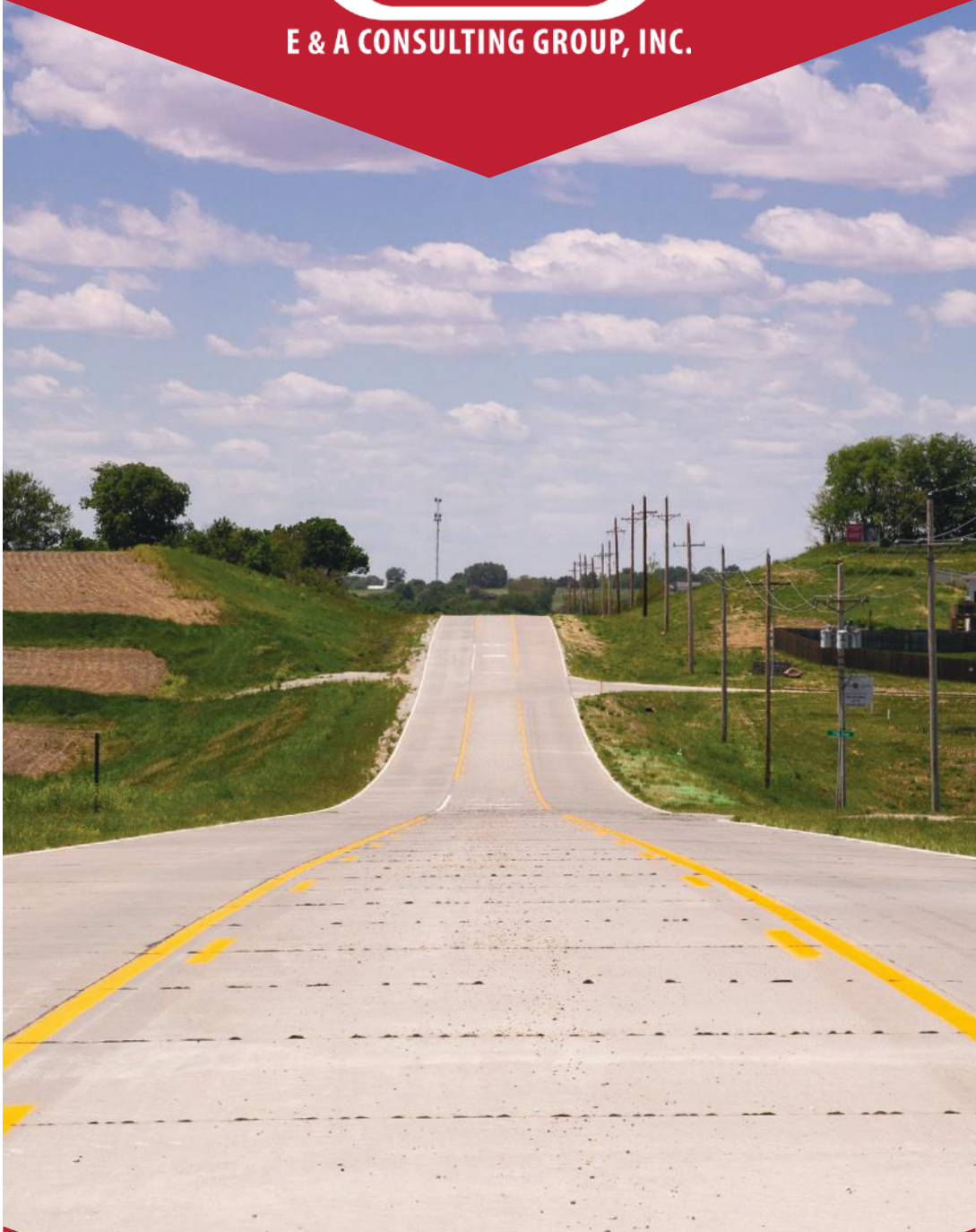


Constructors

constructorslincoln.com



E & A CONSULTING GROUP, INC.



Giles Road, 192nd-204th

eacg.com

Planning | Engineering | Environmental | Field Services

Thiele Geotech Inc

When You Need Confidence...



Providing project support throughout the Midwest.



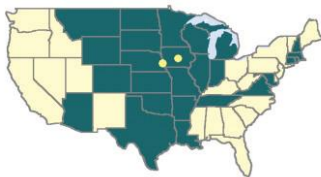
AASHTO Accredited



US Army Corps
of Engineers
Engineer Research and
Development Center

USACE Validated

- Geotechnical Engineering
- Construction Materials Testing
- Geophysical Engineering
- Environmental Services
- Earth Retaining Structure Design



Office Locations:

Omaha
402.556.2171

Des Moines
515.986.3013



www.thielegeotech.com

Improving Our World One Project at a Time.



olsson

Same great company. Just a shorter name. We're Olsson, (formerly Olsson Associates), a nationally recognized engineering and design firm that adds purpose to every project we complete.

KEEPING COMMUNITIES *In Motion*



Pine Lake Road, 61st Street to Highway 2 | Lincoln, NE



Highway, Roadway,
City Street & Country
Road Design



Bridge Design
& Inspections



Traffic Analysis
& Studies



Hydraulic & Hydrologic
Analysis



Bicycle & Trail Master
Planning



Public Involvement

SCH~~EM~~MER

Design with Purpose. Build with Confidence.

888.877.8127 | SCHEMMER.COM

MS MID-STATE ENGINEERING & TESTING

GEOTECHNICAL - CONSTRUCTION MATERIALS TESTING

Established in 1995 Mid-State Engineering & Testing, Inc. with offices in Kearney, Columbus and Norfolk, Nebraska specializes in geotechnical design and consulting, special inspections and materials testing services. Mid-State Engineering & Testing, Inc. materials laboratories are accredited by the American Association of State Highway Transportation Officials (AASHTO) Materials Reference Laboratory (AMRL) and the Concrete and Cement Reference Laboratory (CCRL) and Corp of Engineers. Mid-State Engineering & Testing, Inc. can assist in all your geotechnical needs all across Nebraska, Iowa, South Dakota and Kansas.



GEOTECHNICAL ENGINEERING AND DESIGN

Our clients trust Mid-State Engineering and Testing, Inc. for geotechnical engineering services for virtually any project. Our team of skilled geotechnical professionals conduct geotechnical studies to understand the site geology, soil mechanics, hydraulics and strength of materials of site specific soils as they apply to our client's needs. Our experience in geotechnical engineering assures the most cost-effective yet reliable and sustainable solution. Our geotechnical services include:

- ✓ Drilling and Subsurface Exploration
- ✓ Foundation Design (Shallow, Intermediate and Deep)
- ✓ Floor Slab and Pavement Design
- ✓ Bearing Capacity Analysis
- ✓ Slope Stability Analysis
- ✓ Seismic Analysis

DRILLING - GEOTECHNICAL AND ENVIRONMENTAL

Mid-State Engineering & Testing, Inc. is dedicated to providing our clients the best geotechnical borings, sampling and logging in the industry. Quality samples in a timely manner is paramount to our success. Our experienced drilling team and upgraded equipment is ready to serve you and your needs throughout the Midwest. With two (2) Mobil Auger Rigs available to utilize, we are ready to tackle all your subsurface needs.

- ✓ Geotechnical Subsurface Exploration
- ✓ Contract Drilling across the Midwest
- ✓ Monitor Well Installation and Development
- ✓ Well Rehabilitation and Abandonment
- ✓ Exploratory Borings and Continues Sampling
- ✓ Phase I Site Assessments

2106 E. Highway 30 Suite 1
Kearney, NE 68847
Office: 308-237-0187

402 31st Avenue
Columbus, NE 68601
Office: 402-562-7824

1106 Benjamin Ave; Ste 1100
Norfolk, NE 68701
Office: 402-379-2377

www.midstateengineering.com

BUILT TO CONNECT



BMH Systems, CON-E-CO and RexCon... are now Astec

We're united as OneAstec and focused on your success. Offering the most comprehensive product portfolio for the concrete industry, we're committed to growing as a partner to the concrete production industry, and to helping you succeed by connecting you to the unmatched strength of Astec.

We are now Astec, and we are Built to Connect.



Scan QR code to see
Astec's full line of Concrete Products.



ASTEC™

Conference Evaluation

EVALUATION

Nebraska Concrete Paving Conference
January 24-25, 2023 Cornhusker Marriott Hotel Lincoln, NE

ATTENDEES: On a scale of 1 to 5 with 5 being the best, please indicate / rank the following:

1. OVERALL EVENT

Rating of conference as a whole

1 _____ 2 _____ 3 _____ 4 _____ 5

Length of conference

1 _____ 2 _____ 3 _____ 4 _____ 5

Conference facilities

1 _____ 2 _____ 3 _____ 4 _____ 5

Overnight accommodations

1 _____ 2 _____ 3 _____ 4 _____ 5

Quality, Quantity and Selection of refreshments

1 _____ 2 _____ 3 _____ 4 _____ 5

Quality of meals

1 _____ 2 _____ 3 _____ 4 _____ 5

CONTENT

Relevance of topics

1 _____ 2 _____ 3 _____ 4 _____ 5

Knowledge of speakers

1 _____ 2 _____ 3 _____ 4 _____ 5

Presentation skills of speakers

1 _____ 2 _____ 3 _____ 4 _____ 5

Length of individual sessions

1 _____ 2 _____ 3 _____ 4 _____ 5

Number and frequency of breaks

1 _____ 2 _____ 3 _____ 4 _____ 5

TEAR HERE

Continued -->

EVALUATION

SESSIONS YOU ATTENDED

Exhibitor's presentations

_____ 1 _____ 2 _____ 3 _____ 4 _____ 5
Poor _____ Excellent

John Selmer's Presentation

_____ 1 _____ 2 _____ 3 _____ 4 _____ 5
Poor _____ Excellent

James (Rusty) Simerl's Presentation

_____ 1 _____ 2 _____ 3 _____ 4 _____ 5
Poor _____ Excellent

Anna Lannin's Presentation

_____ 1 _____ 2 _____ 3 _____ 4 _____ 5
Poor _____ Excellent

Jon Wilbeck's Presentation

_____ 1 _____ 2 _____ 3 _____ 4 _____ 5
Poor _____ Excellent

Todd W. Weidemann: Ethics for Engineers

_____ 1 _____ 2 _____ 3 _____ 4 _____ 5
Poor _____ Excellent

Jon Wilbeck: Nebraska PE Updates and CE Requirements

_____ 1 _____ 2 _____ 3 _____ 4 _____ 5
Poor _____ Excellent

Michael Praul: FHWA Concrete Program Update: MCTC, PEM, and TOPS

_____ 1 _____ 2 _____ 3 _____ 4 _____ 5
Poor _____ Excellent

Andy Dearmont/Mike Schultz: E-Ticketing

_____ 1 _____ 2 _____ 3 _____ 4 _____ 5
Poor _____ Excellent

Tim Krason: Open Your Pavement Early (Maturity Method)

_____ 1 _____ 2 _____ 3 _____ 4 _____ 5
Poor _____ Excellent

Luke Hoha & Mike Popischil: Retaining Employees

_____ 1 _____ 2 _____ 3 _____ 4 _____ 5
Poor _____ Excellent

Stanley Zawadzki: Decorative Concrete Maintenance

_____ 1 _____ 2 _____ 3 _____ 4 _____ 5
Poor _____ Excellent

Continued -->

EVALUATION

Michael Daedalus: Back to Basics- Placement and Finishing

1	2	3	4	5
Poor				Excellent

Peter Taylor: Back to Basics - Saw Cutting, Curing and Joint Layout

1	2	3	4	5
Poor				Excellent

Wally Heyen: NDOT History of ASR Mitigation

1	2	3	4	5
Poor				Excellent

Lieska Halsey: NDOT Research Updates

1	2	3	4	5
Poor				Excellent

Andrew Jones: ASR Control on Existing Pavements

1	2	3	4	5
Poor				Excellent

Brian Fox: AGC NDOT Paving Committee Update

1	2	3	4	5
Poor				Excellent

Bruce Grupe, Todd Pfitzer & Dan Thiele: Omaha Metro Area Paving Committee

1	2	3	4	5
Poor				Excellent

NDOT Project Managers: Updates on NDOT Expressway Project

1	2	3	4	5
Poor				

Eric Ferrebee: Carbon Neutrality - Achieving Sustainability with Concrete Pavements

1	2	3	4	5
Poor				Excellent

Bruce Barrett/Barb Garbino-Bevins: Precast Panel Pavement Design & Construction

1	2	3	4	5
Poor				Excellent

Brandon Varilek: Buy America

1	2	3	4	5
Poor				Excellent

Paul Jaworski: Consolidating Concrete (Vibration Management)

1	2	3	4	5
Poor				Excellent

TEAR HERE

Continued -->

EVALUATION

2. How many external conferences/seminars do you attend, on average, in a year?

1-5 6-10 over 10

3. How did you learn of the Concrete Paving Conference?

NCPA Newsletter NACO Website
NCPA postcard or flyer Internet/Website
NCPA Registration form Colleague/friend
League of Municipalities Newsletter Other – explain _____

4. Please specify your main reason for attending this conference

Content
Speakers
Networking
Personal growth/development
Other – explain _____

5. Did the conference fulfill your reason for attending?

Yes, absolutely Yes, but not to the full extent possible No

6. Would you like to see this conference continue in the near future?

Yes, absolutely
No – explain

7. What changes/improvements would you like to see made in future conferences?

- _____
- _____
- _____

8. Suggest any topics you would like to see covered in next year's sessions:

- _____
- _____
- _____

9. List any other suggestions/comments you have:

- _____
- _____
- _____

Thank you for your time in completing this evaluation. - **Bruce**

This page was left intentionally blank.

PDH Forms

This page was left intentionally blank.

PDH Form

Engineers

TEAR HERE

<u>NCPA Concrete Paving Workshop PDH CERTIFICATION for Engineers</u>			
Workshop dates: January 24-25, 2023 At the Cornhusker Marriott, Lincoln, Ne.	START	MINUTES	MINUTES
TOPIC/DESCRIPTION	TIME	TALK	ATTENDED
FIRST DAY'S PROGRAM			
Welcome/Introductions/housekeeping: Bruce Grupe	9:00	10	
Exhibitor Presentations	9:10	20	
John Selmer, NDOT: State of the State	9:30	30	
James Simerl, FHWA: Update on FHWA Activities and Programs	10:30	30	
Ann Rickart, Ne. Dept. of Aeronautics: Upcoming Airport Projects in 2023	11:00	30	
Jon Wilbeck, NE Board of Engineers Rule Revisions	11:30	30	
Lunch and Awards Banquet	Noon		
Afternoon Breakout sessions 1,2,& 3	see below		
SECOND DAY'S PROGRAM			
NDOT Project Managers: Updates on NDOT Expressway Project	8:00	60	
Eric Ferree: Carbon Neutrality: Achieving Sustainability with Concrete Pavements	9:00	45	
Bruce Barrett: Precast Panel Pavement Design & Construction	10:15	30	
Brandon Varilek, By America Program Changes	10:45	30	
Paul Jaworski: Consolidating Concrete	11:15	30	
End of the Workshop	Noon		
DETAILS OF AFTERNOON BREAKOUT SESSIONS			
<u>Breakout Session 1</u>			
Todd Weidemann: Ethics for Engineers	2:00	60	
Jon Wilbeck: Nebr. Board CE requirements	3:00	30	
Praul, Michael: FHWA Concrete Program Update: MCTC, PEM, and TOPS	4:00	30	
Andy Dearmont/Mike Schulz: E-Ticketing	4:30	30	
<u>Breakout Session 2</u>			
Tim Krason: Open your Pavement Early (Maturity Method)	2:00	30	
Mike Pospischi: Retaining Employees	2:30	30	
Stephen Linn: Decorative Concrete Maintenance	3:00	30	
Michael Daedalus: Back to Basics - Placement and Finishing	4:00	30	
Peter Taylor: Back to Basics - Saw cutting, curing and joint layout	4:30	30	
<u>Breakout Session 3</u>			
Wally Heyen: NDOT History of ASR Mitigation	2:00	30	
Lieska Halsey: NDOT research updates	2:30	30	
Andrew Jones: ASR Control on Existing Pavements	3:00	30	
Brian Fox: AGC NDOT Paving Committee Update	4:00	30	
Bruce Grupe, Todd Pfitzer and Dan Thiele: Omaha Metro Area Paving Committee	4:30	30	
	Minutes >	495	
	Hours >	8.25	
	Total Minutes Attended >		
	Total Hours Attended >		

Engineer's PDH Certification

This document is to certify that _____ attended the above program presented by the Nebraska Concrete Paving Association. This Workshop is estimated to provide 8.25 Professional Development Hours, or 0.825 Continuing Education Units. However, the Board of Engineers and Architects has final authority with respect to approval or credit.

Bruce Grupe, P.E.
Director of NCPA

Nebraska Concrete Paving Association
5700 Seward Ave, Ste B, Lincoln, Ne. 68507

402.499.7105

This page was left intentionally blank.

PDH Form

Superintendents

TEAR HERE

<u>NCPA Concrete Paving Workshop PDH CERTIFICATION for Superintendents</u>			
Workshop dates: January 24-25, 2023 At the Cornhusker Marriott, Lincoln, Ne.	START	MINUTES	MINUTES
TOPIC/DESCRIPTION	TIME	TALK	ATTENDED
FIRST DAY'S PROGRAM			
Welcome/Introductions/housekeeping: Bruce Grupe	9:00	10	
Exhibitor Presentations	9:10	20	
John Selmer, NDOT: State of the State	9:30	30	
James Simerl, FHWA: Update on FHWA Activities and Programs	10:30	30	
Ann Rickart, Ne. Dept. of Aeronautics: Upcoming Airport Projects in 2023	11:00	30	
Jon Wilbeck, NE Board of Engineers Rule Revisions	11:30	30	
Lunch and Awards Banquet	Noon		
Afternoon Breakout sessions 1,2,& 3	see below		
SECOND DAY'S PROGRAM			
NDOT Project Managers: Updates on NDOT Expressway Project	8:00	60	
Eric Ferree: Carbon Neutrality: Achieving Sustainability with Concrete Pavements	9:00	45	
Bruce Barrett: Precast Panel Pavement Design & Construction	10:15	30	
Brandon Varilek, By America Program Changes	10:45	30	
Paul Jaworski: Consolidating Concrete	11:15	30	
End of the Workshop	Noon		
DETAILS OF AFTERNOON BREAKOUT SESSIONS			
Breakout Session 1			
Todd Weidemann: Ethics for Engineers	2:00	60	
Jon Wilbeck: Nebr. Board CE requirements	3:00	30	
Praul, Michael: FHWA Concrete Program Update: MCTC, PEM, and TOPS	4:00	30	
Andy Dearmont/Mike Schulz: E-Ticketing	4:30	30	
Breakout Session 2			
Tim Krason: Open your Pavement Early (Maturity Method)	2:00	30	
Mike Pospischi: Retaining Employees	2:30	30	
Stephen Linn: Decorative Concrete Maintenance	3:00	30	
Michael Daedalus: Back to Basics - Placement and Finishing	4:00	30	
Peter Taylor: Back to Basics - Saw cutting, curing and joint layout	4:30	30	
Breakout Session 3			
Wally Heyen: NDOT History of ASR Mitigation	2:00	30	
Lieska Halsey: NDOT research updates	2:30	30	
Andrew Jones: ASR Control on Existing Pavements	3:00	30	
Brian Fox: AGC NDOT Paving Committee Update	4:00	30	
Bruce Grupe, Todd Pfitzer and Dan Thiele: Omaha Metro Area Paving Committee	4:30	30	
	Minutes >	495	
	Hours >	8.25	
	Total Minutes Attended >		
	Total Hours Attended >		

Superintendents PDH Certification

This document is to certify that _____ attended the above program presented by the Nebraska Concrete Paving Association. The Board of Examiners for County Highway and City Street Superintendents approved this workshop for 8.25 Professional Dev. Hours for Re-Certification as a County Highway or City Street Superintendent.

Bruce Grupe, P.E. Nebraska Concrete Paving Association
 Director of NCPA 5700 Seward Ave, Ste B, Lincoln, Ne. 68507

402.499.7105

This page was left intentionally blank.



Nebraska Concrete Paving Association
5700 Seward Ave., Ste. B.
Lincoln, NE 68507
(402) 499-7105
www.nebrconc.org