



**SCG.**

**Supporting Mainstream & SEND Schools With Their Staffing Needs.**

01772 954200

[spencerclarkegroup.co.uk](http://spencerclarkegroup.co.uk)



**Recruitment Agency  
of the Year**





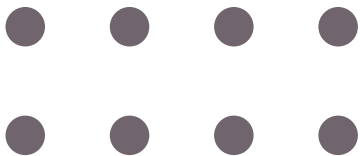
## Introducing **SCG.**

Formed in 2017, we're an energetic, ambitious and forward thinking education recruitment agency based in the heart of the North West.

Whether you are looking for a Teaching Assistant for the day, a Teacher to cover maternity leave or a Headteacher for a 12 month contract, we can help!

Our education team pride themselves on taking the time to understand your schools complex needs and delivering suitable teaching staff with all the skills and experience you require.

When it comes to expertise, you won't be disappointed with our education team. Along with countless years of experience working in education recruitment, 75% of our team have experience working within the education sector as Teachers and Teaching Assistants!



## **Mission.**

To set the benchmark in our industry, dedicated to exceptional service, and constantly evolving to exceed expectations.

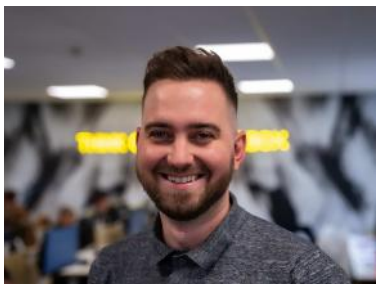
## **Vision.**

To positively impact lives by connecting candidates and clients, enabling opportunities for shared success.



# SEND Schools

## KEY CONTACTS



### **Jamie Heath**

Managing Consultant

01772 954200 / 020 3039 3555  
jh@spencerclarkegroup.co.uk  
linkedin.com/in/JH-SCG

---

**Supports schools in these areas**  
Lancashire



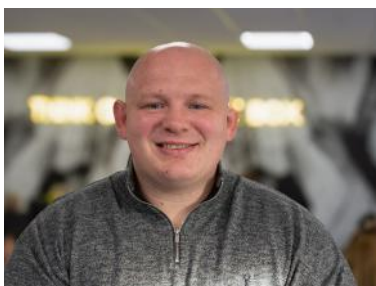
### **Paul Best**

Lead Consultant

01772 954200  
pb@spencerclarkegroup.co.uk  
linkedin.com/in/PB-SCG

---

**Supports schools in these areas**  
Lancashire



### **Niall Murphy**

Managing Consultant

01772 954200  
nm@spencerclarkegroup.co.uk  
linkedin.com/in/NM-SCG

---

**Supports schools in these areas**  
Manchester



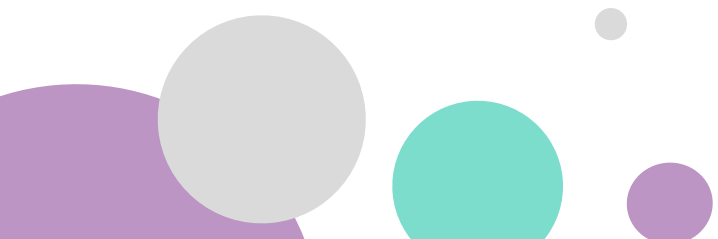
### **Destiny Buck**

Recruitment Consultant

01772 954200  
db@spencerclarkegroup.co.uk  
linkedin.com/in/DB-SCG

---

**Supports schools in these areas**  
East Lancashire



# SEND Schools

## KEY CONTACTS



### **Josh Clair**

Lead Consultant

01772 954200

[jtc@spencerclarkegroup.co.uk](mailto:jtc@spencerclarkegroup.co.uk)

[linkedin.com/in/JTC-SCG](https://www.linkedin.com/in/JTC-SCG)

---

**Supports schools in these areas**

Manchester



### **Emily Watson**

Senior Consultant

01772 954200

[ew@spencerclarkegroup.co.uk](mailto:ew@spencerclarkegroup.co.uk)

[linkedin.com/in/EW-SCG](https://www.linkedin.com/in/EW-SCG)

---

**Supports schools in these areas**

Lancashire



### **Liam Richmond**

Senior Consultant

01772 954200

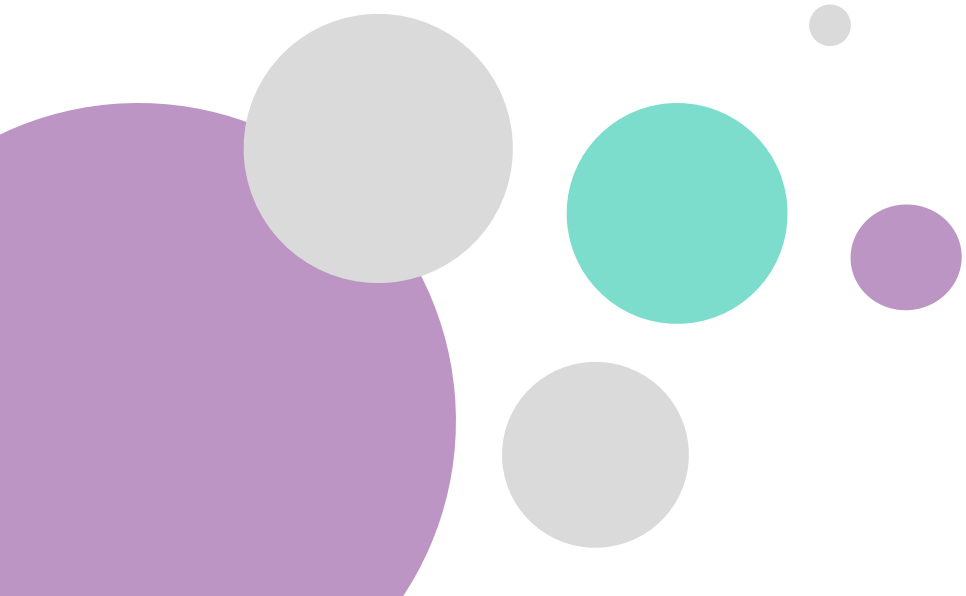
[lr@spencerclarkegroup.co.uk](mailto:lr@spencerclarkegroup.co.uk)

[linkedin.com/in/LR-SCG](https://www.linkedin.com/in/LR-SCG)

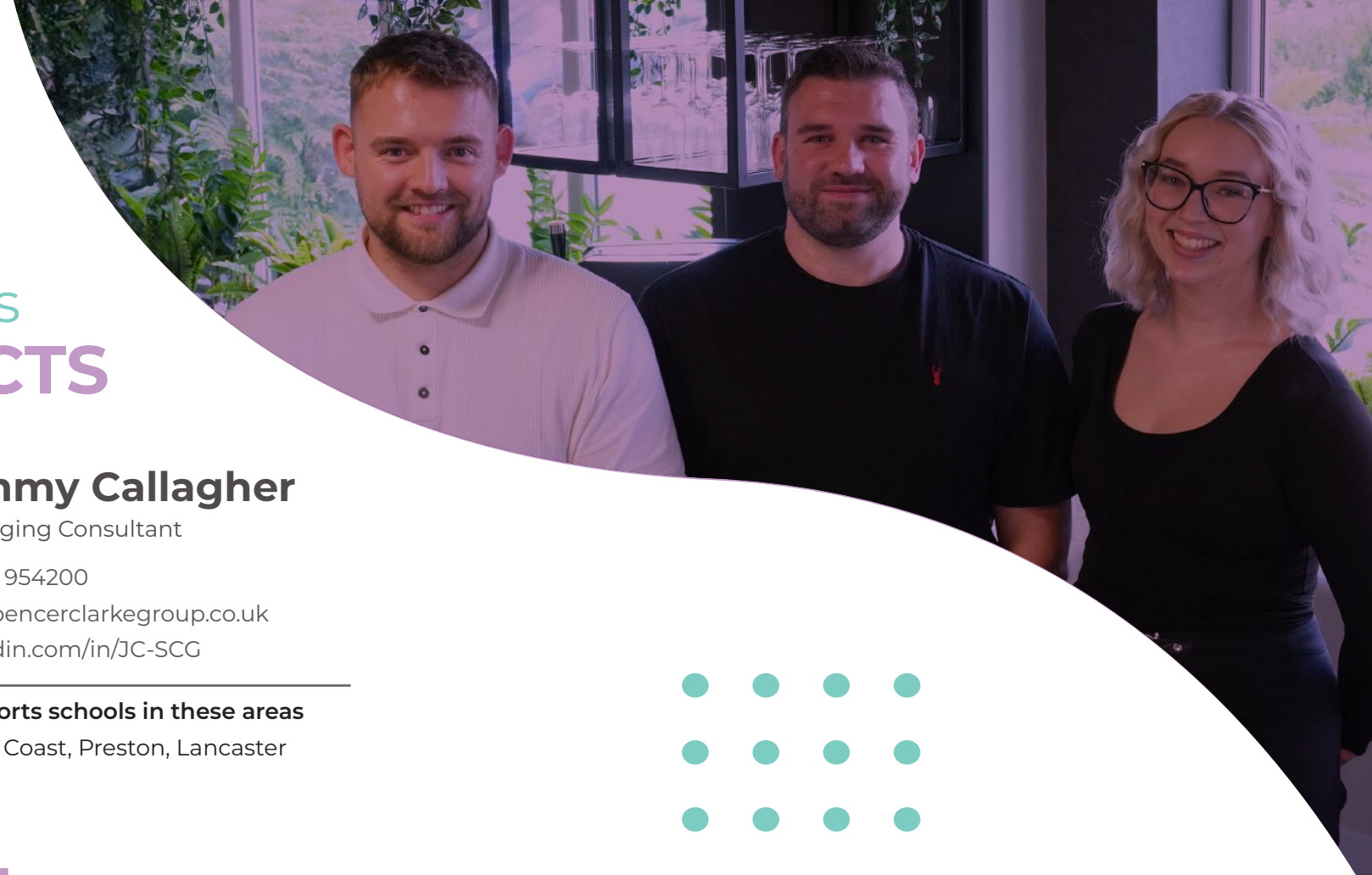
---

**Supports schools in these areas**

Greater Manchester



# Primary Schools KEY CONTACTS



## Jimmy Callagher

Managing Consultant

01772 954200

[jc@spencerclarkegroup.co.uk](mailto:jc@spencerclarkegroup.co.uk)

[linkedin.com/in/JC-SCG](https://www.linkedin.com/in/JC-SCG)

---

**Supports schools in these areas**

Fylde Coast, Preston, Lancaster



## Joseph Chanter

Senior Consultant

01772 954200

[jmc@spencerclarkegroup.co.uk](mailto:jmc@spencerclarkegroup.co.uk)

[linkedin.com/in/JMC-SCG](https://www.linkedin.com/in/JMC-SCG)

---

**Supports schools in these areas**

South Ribble, West Lancashire



## Jolie Moon

Recruitment Consultant

01772 954200

[jmo@spencerclarkegroup.co.uk](mailto:jmo@spencerclarkegroup.co.uk)

[linkedin.com/in/JMO-SCG](https://www.linkedin.com/in/JMO-SCG)

---

**Supports schools in these areas**

East Lancashire, Lancaster



# Secondary Schools **KEY CONTACTS**



## **Denni Marie-Bassett**

Senior Consultant

01772 954200  
dmb@spencerclarkegroup.co.uk  
linkedin.com/in/DMB-SCG

---

**Supports schools in these areas**  
East Lancs



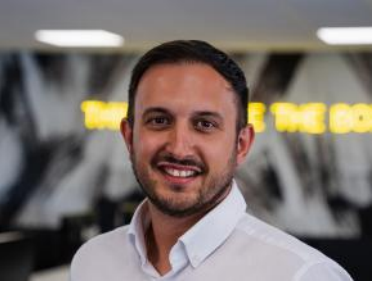
## **Liam Jones**

Senior Consultant

01772 954200  
lj@spencerclarkegroup.co.uk  
linkedin.com/in/LJ-SCG

---

**Supports schools in these areas**  
Preston, Lancaster, West Lancs



## **Matt Byrne-Fraser**

Lead Consultant

01772 954200  
mbf@spencerclarkegroup.co.uk  
linkedin.com/in/MBF-SCG

---

**Supports schools in these areas**  
North West

# School Facilities

## KEY CONTACTS



### Thomas Humphreys

Head of School Facilities

01772 954200

[th@spencerclarkegroup.co.uk](mailto:th@spencerclarkegroup.co.uk)

[linkedin.com/in/TH-SCG](https://www.linkedin.com/in/TH-SCG)

---

**Supports schools in these areas**

Nationwide



### Emma Dobson

Recruitment Consultant

01772 954200

[ed@spencerclarkegroup.co.uk](mailto:ed@spencerclarkegroup.co.uk)

[linkedin.com/in/ED-SCG](https://www.linkedin.com/in/ED-SCG)

---

**Supports schools in these areas**

North West, Nationwide



### Ashleigh-Jo Normington

Recruitment Consultant

01772 954200

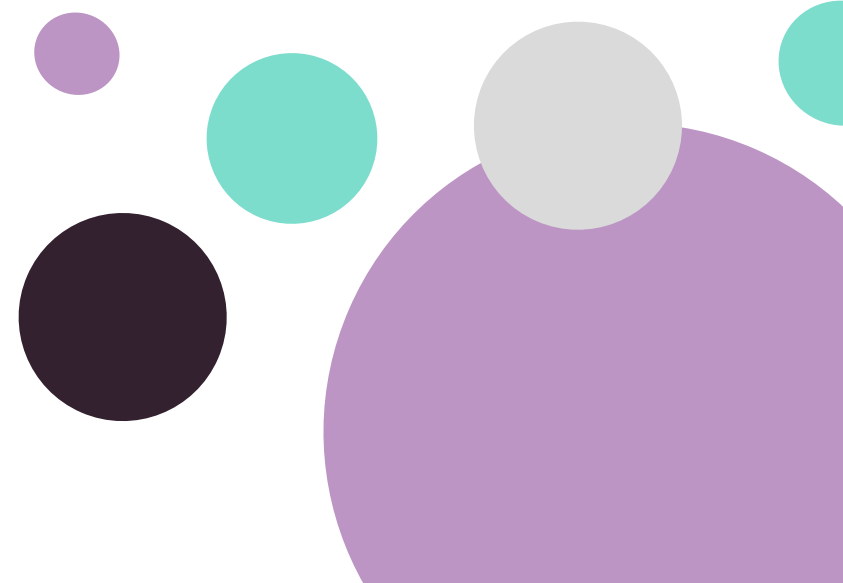
[ajn@spencerclarkegroup.co.uk](mailto:ajn@spencerclarkegroup.co.uk)

[linkedin.com/in/AJN-SCG](https://www.linkedin.com/in/AJN-SCG)

---

**Supports schools in these areas**

North West





# EXPERTISE

---



Teachers & SEND  
Teachers



Teaching Assistants  
& SEND Teaching  
Assistants



Headteachers &  
Executive Headteachers



School Business  
Managers



Cover Supervisors



SIMS Administrators



Cooking & Cleaning Staff



School Caretakers



Painters, Decorators &  
Maintenance Staff



School Administrators &  
Receptionists





## What Sets Us **APART**



Comprehensive pool of experienced Teachers and Teaching Assistants



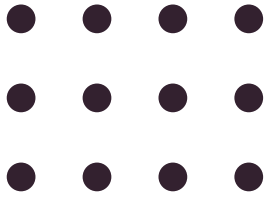
75% of our education team are fully qualified Teachers or Teaching Assistants!



Candidates available on a temporary, permanent or temp - perm basis



Unrivalled expertise within school recruitment



Contact us from 7am  
for last minute cover



Regular school visits  
to ensure your needs  
are always being met



One-stop shop for  
all your teaching and  
facilities staff needs



APSCo Compliance+  
accredited to go beyond  
statutory safeguarding  
standards (First time  
score of 99.58%)



Why Schools Love

# Working With Us

“Our consultant, Jamie Heath, found a number of highly skilled and experienced Teaching Assistants at short notice. He visited the setting so that he truly understood our needs as a school and what skills, personality and type of person we were looking for.

In doing this, it meant he could send only the people that he thought would fit and it has made the day to day running of the school much more successful.

Jamie listens to what we are looking for and he won't just send anyone as sometimes this is more of a hindrance than help! We have been nothing but impressed with Spencer Clarke Group since we started working with them.”

**Helen Smith, Deputy Headteacher**

## Why Schools Love

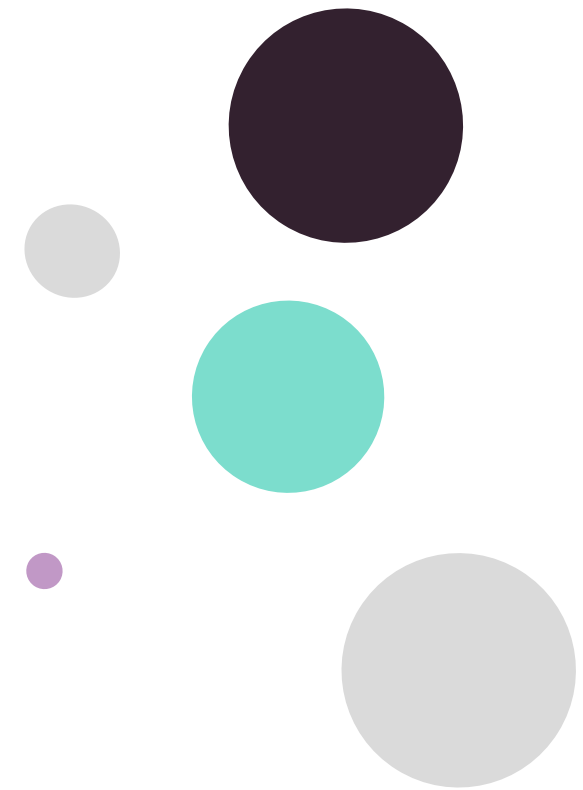
# Working With Us

“We were facing the challenge of managing a significant intake of new pupils. This sudden increase put a strain on our existing resources and required additional staff to ensure that we could maintain a high standard of education and support for all students.

Spencer Clarke Group provided an effective solution to our staffing challenge by supplying high-quality staff on a short-term basis. They took the time to understand our specific needs and promptly sent experienced professionals who seamlessly integrated into our team.

Spencer Clarke Group’s services have improved our operational efficiency. By providing qualified staff on a short-term basis, they alleviated the workload on our existing team, reducing stress and preventing burnout.”

**Deputy Head, SEMH School**



The infographic features a horizontal teal bar at the top. Below it, four vertical lines of different colors (teal, dark purple, grey, and purple) extend downwards to small circles. Each line is connected to a horizontal bar that curves to the right, creating a series of nested, rounded rectangular shapes. The colors of these bars correspond to the vertical lines. In the top right corner, there are three overlapping circles in teal, purple, and dark purple.

**93%**

Candidates who move from temporary to permanent contracts

**91%**

Candidates who start work within one week of being compliant

**35%**

Placed staff who come from a non-educational background

**100s**

Schools we work with

SCG's

# Big Community Build

Here at Spencer Clarke Group, giving back to our local community is very important to us.

That's why we recently embarked on a mission to renovate a local school playground and turn it into a world of fun and creativity for 2-5 year old's.

The aim of our big community build has been to help the school adhere to the Curiosity Approach, a practice under the Early Year Foundation Stage (EYFS) statutory framework.

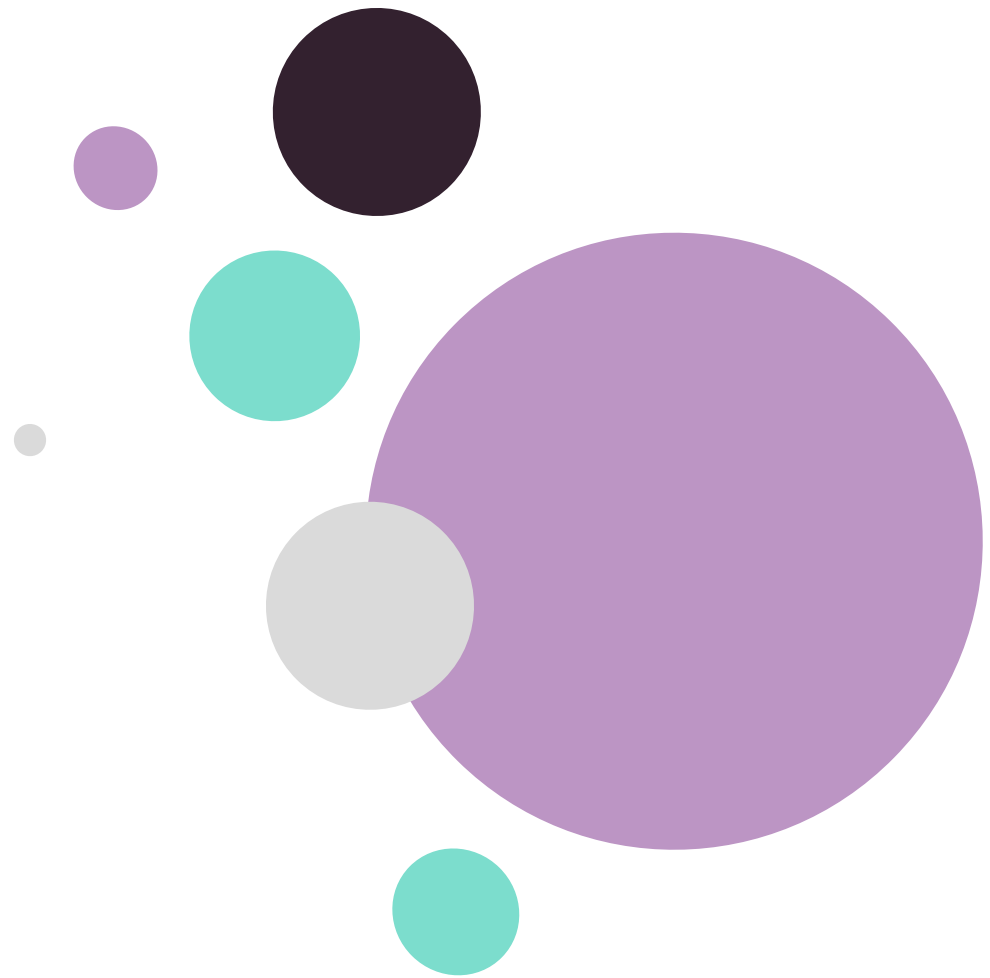




Affording children the opportunity to learn through creative play and explore new environments is essential for their development and exactly why we have been so passionate about transforming what was a concrete jungle, into five extraordinary learning zones.

The children now have access to a construction zone, an outdoor library, a music wall, an art wall and a curiosity shed to ignite their imagination.





# Recruitment Agency of the Year



[spencerclarkegroup.co.uk](https://spencerclarkegroup.co.uk)

